



Construction Engineering Division
 1801 S. McLean Blvd., Suite B
 Wichita KS, 67213
 (316) 268-4027

Sanitary Sewer Riser Table

Project Name: Sanitary Sewer Improvements to serve Buffalo Pines Addition
Project Location: (south of Pawnee Ave, east of 127th St East)
Project No: 468-2023-041286
MUNIS No: E4036 / 47271024
Contractor: Mies Construction, Inc.
Inspector: Andres Bailon

Riser No.	Line No.	Station	Distance from Main to Riser (Lt./Rt.)	Distance from		Comment
				Upstream MH	Downstream MH	
1	1	7+61	13' Rt.	165'	11'	
2	1	7+99	13' Rt.	127'	49'	
3	1	8+42	13' Rt.	84'	92'	
4	1	8+84	13' Rt.	42'	134'	
5	1	9+33	13' Rt.	217'	7'	
6	1	9+69	13' Rt.	181'	43'	
7	1	10+12	13' Rt.	138'	86'	
8	1	10+54	13' Rt.	96'	128'	
9	1	10+97	13' Rt.	53'	171'	
10	1	11+39	13' Rt.	11'	213'	
11	1	11+62	7' Rt.	133'	12'	
12	1	11+97	7' Rt.	98'	47'	
13	1	12+32	7' Rt.	63'	82'	
14	1	12+67	7' Rt.	28'	117'	
15	1	17+96	12.5' Rt.	27'	103'	
16	1	18+67	13.5' Rt.	96'	44'	
17	1	19+40	7.5' Rt.	23'	117'	
18	1	20+14	5' Rt.	140'	51'	
19	1	20+94	5.5' Rt.	60'	131'	
20	1	21+75	5.5' Rt.	191'	21'	
21	1	24+40	5.5' Rt.	213'	74'	
22	1	25+10	5' Rt.	143'	144'	
23	1	26+47	5' Rt.	6'	281'	
24	5	6+34	12' Rt.	205'	24'	
25	5	6+74	14.5' Rt.	165'	64'	
26	5	7+14	17' Rt.	125'	104'	
27	5	7+48	16.5' Rt.	91'	138'	
28	5	7+82	15.5' Rt.	57'	172'	
29	5	8+16	12.5' Rt.	23'	206'	
30	5	8+50	11.5' Rt.	262'	11'	
31	5	8+89	15' Rt.	223'	50'	
32	5	9+15	17.5' Rt.	197'	76'	
33	5	9+50	19' Rt.	162'	111'	
34	5	9+85	19' Rt.	127'	146'	
35	5	10+20	17.5' Rt.	92'	181'	
36	5	10+55	15.5' Rt.	57'	216'	
37	5	10+89	12.5' Rt.	23'	250'	



Construction Engineering Division
 1801 S. McLean Blvd., Suite B
 Wichita KS, 67213
 (316) 268-4027

Sanitary Sewer Riser Table

Project Name: Sanitary Sewer Improvements to serve Buffalo Pines Addition
Project Location: (south of Pawnee Ave, east of 127th St East)
Project No: 468-2023-041286
MUNIS No: E4036 / 47271024
Contractor: Mies Construction, Inc.
Inspector: Andres Bailon

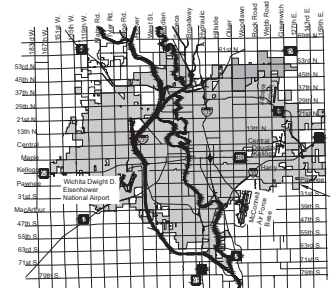
Riser No.	Line No.	Station	Distance from Main to Riser (Lt./Rt.)	Distance from		Comment
				Upstream MH	Downstream MH	
38	5	11+48	10' Rt	36'	134'	
39	5	11+94	10' Rt.	82'	88'	
40	7	0+14	10' Lt.	138'	14'	
41	7	1+14	11' Lt.	38'	114'	
42	7	2+16	10.5' Lt.	107'	64'	
43	7	2+95	11' Lt.	28'	143'	
44	7	3+72	10.5' Lt.	74'	49'	

SANITARY SEWER EXTENSION to serve BUFFALO PINES ADDITION, PHASE 1 CITY OF WICHITA, KANSAS

Paul Gunzelman, P.E. City Engineer
Project Number: 468-2023-041286
Org Code Number: 47271024
Munis Number: E4036

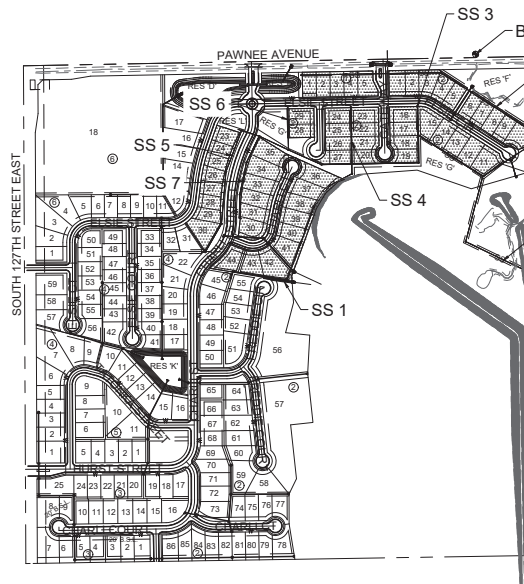
**BASIN: WALNUT-4
6344D**

RLS: 08-01-2025

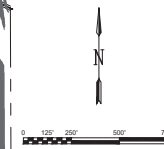


PROJECT LOCATION

Vicinity Map



Sheet Title	Sheet Index
1	TITLESHEET
2	SITE CLEARING PLAN
3	PRE-CAST MANHOLE DETAILS
4	MANHOLE FRAME & COVER DETAILS
5	VERTICAL RISER DETAILS
6	CLEANOUT RISER DETAILS
7	SANITARY SEWER 1 P&P (1 OF 3)
8	SANITARY SEWER 1 P&P (2 OF 3)
9	SANITARY SEWER 1 P&P (3 OF 3)
10	SANITARY SEWER 2 P&P (1 OF 2)
11	SANITARY SEWER 2 P&P (2 OF 2)
12	SANITARY SEWERS 3 & 4 P&P
13	SANITARY SEWER 5 P&P (1 OF 2)
14	SANITARY SEWER 5 P&P (2 OF 2)
15	SANITARY SEWERS 6 & 7 P&P
16	COORDINATE MAP
17	POINT TABLE
18	EROSION CONTROL PLAN
19	CURB INLET & CONSTRUCTION ENTRANCE DETAILS
20	SILT FENCE DETAILS
21	DITCH CHECK DETAILS
22	STREET IMPROVEMENTS PROCESS
23	SUBDIVISION DEVELOPMENT PLAN
24	FINAL PLAT (1 OF 2)
25	FINAL PLAT (2 OF 2)



Benchmarks

BENCHMARK #1:
CHISELED SQUARE WITH DIVOT ON THE TOP OF CURB ON THE SOUTH SIDE OF THE NORTH DRIVE ENTRANCE TO SOUTHEAST HIGH SCHOOL, 87 WEST OF THE CENTERLINE OF E 127TH ST S AND 1105' SOUTH OF THE CENTERLINE OF PAWNEE
ELEVATION = 1362.05 (NAVD88, G18)

BENCHMARK #2:
CHISELED SQUARE WITH DIVOT ON THE SOUTHWEST CORNER OF AN RCBC, 2365' EAST OF THE CENTERLINE OF E 107TH ST S AND 17' NORTH OF THE CENTERLINE OF PAWNEE
ELEVATION = 1324.43 (NAVD88, G18)

DEVELOPER INFORMATION

NAME	PHIL RUFFO (DOUBLE DOWN DEVELOPERS, LLC)
ADDRESS	13201 E PAWNEE RD, WICHITA, KS 67230
PHONE NUMBER	(316) 734-4152
EMAIL ADDRESS	lruffo316@gmail.com

IMPROVEMENT DISTRICT

NOTE: All coordinates listed are modified NAD83 Kansas State Plane Zone South unless otherwise noted. To convert listed coordinates to NAD83 Kansas State Plane Zone South coordinates multiply the northing and easting by the project scale factor of 0.99994705. Elevation datum is NAVD88 Geoid 18 unless otherwise noted.

JUL 2024

PLANS PREPARED BY



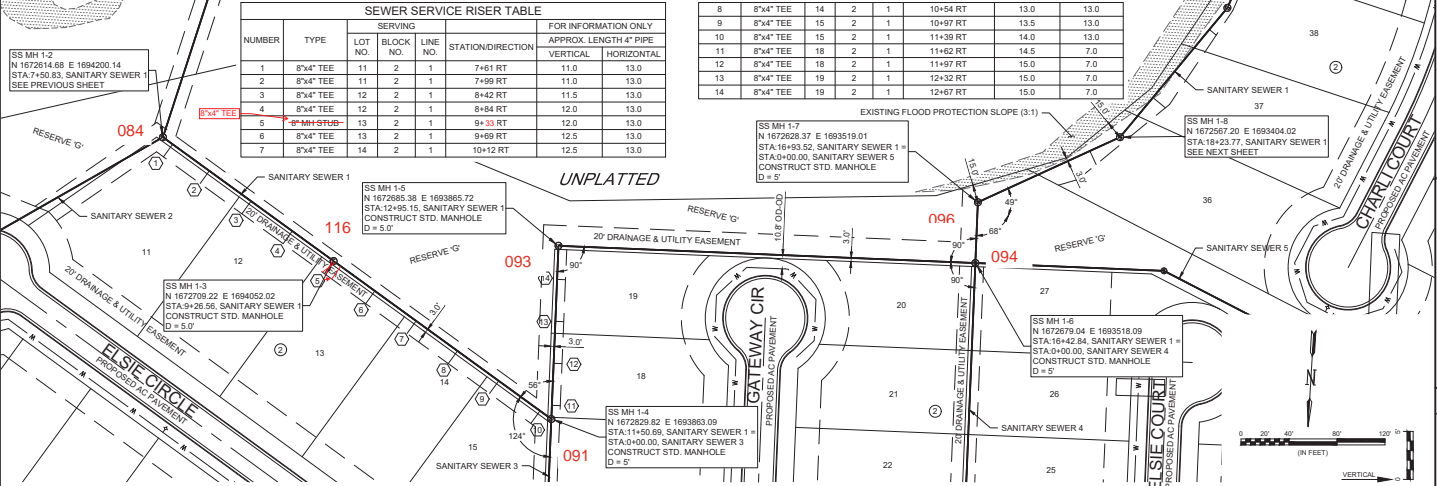
GENERAL NOTES:

- The Contractor shall comply with all applicable safety regulations. All construction shall be completed following current City Standard Specifications and Special Provisions.
- Contractor will be required to provide notice to utility companies a minimum of seventy-two (72) hours prior to any excavation, as follows:
Kansas One-Call 687-2470
The Contractor must notify the following in case of an emergency:
AT&T 1-800-246-8464
Butler Rural Electric 1-800-464-0060
City of Wichita Water & Sewer Dept. 1-316-219-8921
City of Wichita Stormwater 1-316-268-4090
City of Wichita Traffic 1-316-268-4034
Cox Communications 1-888-249-3530
Energy 1-800-544-4857
Kansas Gas Service 1-888-482-4550
Phillips 66 Pipeline 1-877-267-2290
USD 259 1-316-973-2700
- Utility service lines, poles, etc. are to be adjusted as necessary by others prior to construction unless the plans specifically call for their adjustment by the Contractor or unless the plans specifically identify a utility to be adjusted by its owner during construction. Existing utilities and their location, as shown on the plans, represent the best information obtainable for design. The Contractor will be required to work around existing utilities within the right-of-way which do not conflict with proposed construction.
- Rubble from the removal of miscellaneous structures and excess excavation which is to be wasted shall be disposed of on sites to be provided by the Contractor. These sites shall be approved by the Engineer as to suitability, appearance and site location. Locations, in the opinion of the Engineer, that will leave an unsightly appearance will not be approved. All disposal sites must be approved by the Kansas State Board of Agriculture permit. Any material dumped in waters of the United States or wetlands is subject to U.S. Corps. of Engineers permitting regulations. Any material buried or stockpiled beyond

- The Contractor shall protect from damage and support existing utilities through construction as approved by the utility owner and the Engineer at the contractors expense.
- Contractor shall limit the extent of trench openings overnight and weekends to less than 50 feet.
- All stubs and plugged pipes shall be located with green plastic tape in the same manner as risers.
- Connecting to Existing Manholes:
Prior to laying sewer lines using existing stubs in existing manholes, the Contractor shall expose and verify the elevation, grade and alignment of existing stubs and notify the Engineer of any deviation from the plans. Where connection to an existing manhole that does not have an existing stub or the stub is unusable due to elevation grade or alignment, the Contractor shall bore out into existing manhole wall to make connection using approved water stop gasket, and reshape the existing manhole invert to provide smooth flow. The cost to connecting to existing manholes is incidental to the project.
- Contractor shall provide positive drainage away from all manhole covers.
- The Contractor shall prevent any construction debris from entering the existing sanitary sewer during construction.
- The Contractor shall be responsible for maintaining continuous flow of sewage through construction. Contractor proposed method for maintaining sewage flow shall be submitted and approved by the Sewer Maintenance Division (316-268-4073) prior to starting and by-passing of sewage flows. The Engineer may be contacted at (316-268-4235).
- Any over excavation from manhole and/or pipe removal shall be backfilled and compacted in accordance with the Standard Specifications.
- No shrink or swell factors have been applied to the earthwork quantities shown on this project. All earthwork quantities are based on raw surface volume comparisons.
- Excess dirt generated from installation of underground utilities is to remain on site and be stockpiled on Lot 35, Block 4.

- If traffic will be impacted by construction, a traffic control plan must be submitted and approved by the City Traffic Engineer, at traffic@wichita.gov before construction can begin. The Contractor shall be responsible for all traffic control measures to facilitate construction. All construction zone markings and signage shall conform to the latest version of the Manual on Uniform Traffic Control Devices (MUTCD) as published by the US Dept. of Transportation, Federal Highway Administration. All costs associated with construction markings and signage shall be the Contractor's responsibility.
- All elevations shown are NAVD 88.
- All areas disturbed during construction shall be restored to match existing conditions.

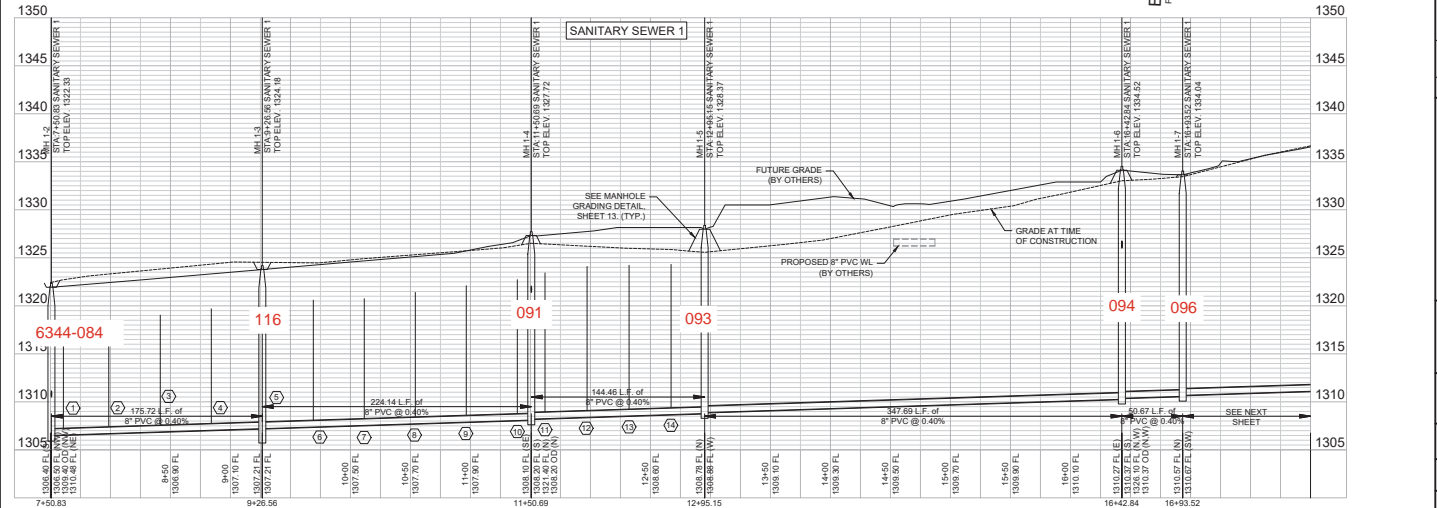
FILE: L:\02241007 - Buffalo Plains Phase 10\wp\p\sanitary sewer sheet\sanitary sewer 1 (2 of 3) DWG: LBS_SSW_103008_1157.AIA.LAW.MDDIG.DWG
 L:\02241007 - Buffalo Plains Phase 10\wp\p\sanitary sewer sheet\sanitary sewer 1 (2 of 3) DWG: LBS_SSW_103008_1157.AIA.LAW.MDDIG.DWG
 L:\02241007 - Buffalo Plains Phase 10\wp\p\sanitary sewer sheet\sanitary sewer 1 (2 of 3) DWG: LBS_SSW_103008_1157.AIA.LAW.MDDIG.DWG



SEWER SERVICE RISER TABLE

NUMBER	TYPE	SERVING			FOR INFORMATION ONLY		
		LOT NO.	BLOCK NO.	LINE NO.	STATION/DIRECTION	APPROX. LENGTH 4" PIPE	VERTICAL
1	8"x4" TEE	11	2	1	7+61 RT	11.0	13.0
2	8"x4" TEE	11	2	1	7+69 RT	11.0	13.0
3	8"x4" TEE	12	2	1	8+42 RT	11.5	13.0
4	8"x4" TEE	12	2	1	8+84 RT	12.0	13.0
5	8" MH SUB	13	2	1	9+33 RT	12.0	13.0
6	8"x4" TEE	13	2	1	9+69 RT	12.5	13.0
7	8"x4" TEE	14	2	1	10+12 RT	12.5	13.0

8	8"x4" TEE	14	2	1	10+54 RT	13.0	13.0
9	8"x4" TEE	15	2	1	10+97 RT	13.5	13.0
10	8"x4" TEE	15	2	1	11+39 RT	14.0	13.0
11	8"x4" TEE	18	2	1	11+62 RT	14.5	7.0
12	8"x4" TEE	18	2	1	11+97 RT	15.0	7.0
13	8"x4" TEE	19	2	1	12+32 RT	15.0	7.0
14	8"x4" TEE	19	2	1	12+67 RT	15.0	7.0



GARVER

1905 Midfield Rd
 Wichita, KS 67209
 (316) 264-8008

CITY OF WICHITA
 WICHITA, KANSAS

**BUFFALO PLAINS ADDITION
 SANITARY SEWER EXTENSION**

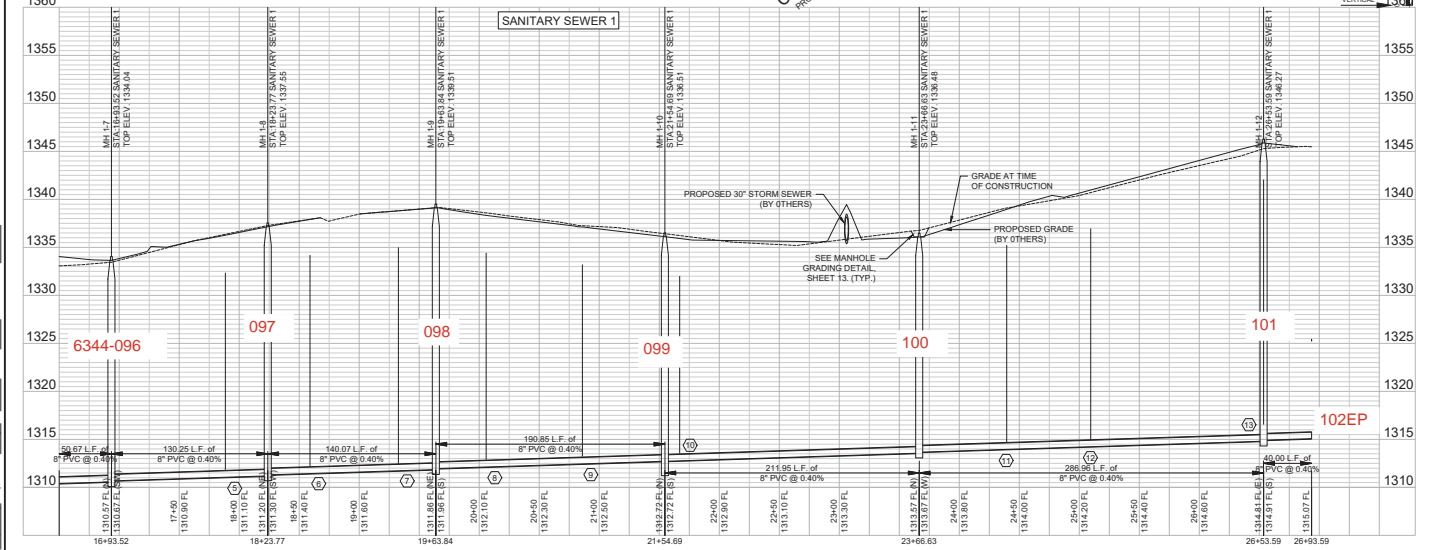
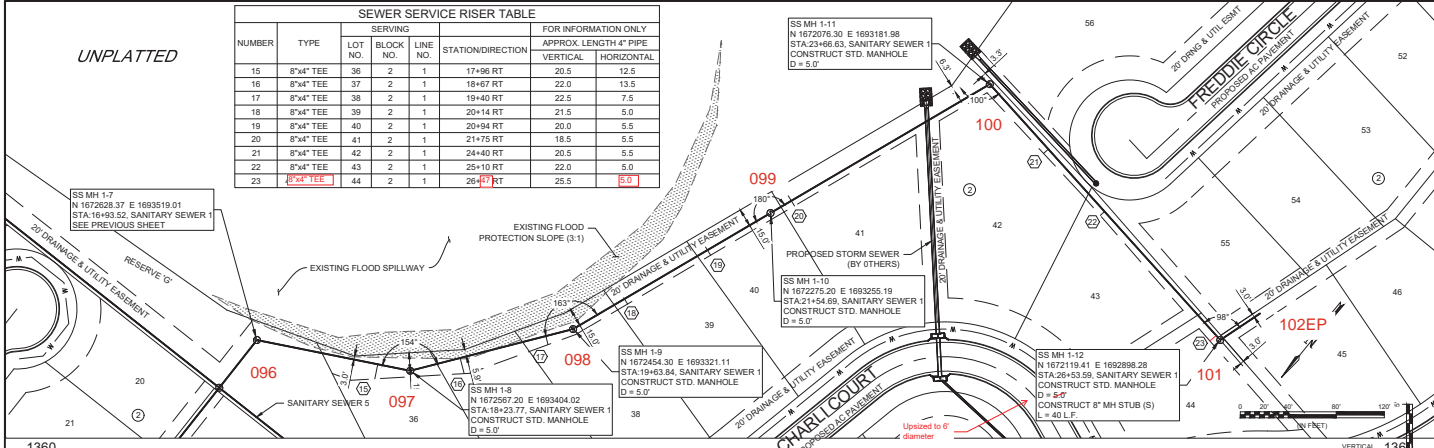
**SANITARY SEWER 1 P&P
 (2 OF 3)**

JOB NO.: 22741007
 DATE: AUG 2024
 DESIGNED BY: CDJ
 DRAWN BY: CDJ

DRAWING NUMBER: _____
 SHEET NUMBER: **8 OF 25**

UNPLATTED

NUMBER	TYPE	SERVING		STATION/DIRECTION	FOR INFORMATION ONLY	
		LOT NO.	BLOCK NO.		APPROX. LENGTH 4" PIPE	VERTICAL
15	8"x4" TEE	36	2	17+98 RT	20.5	12.5
16	8"x4" TEE	37	2	18+47 RT	22.0	13.5
17	8"x4" TEE	38	2	19+40 RT	22.5	7.5
18	8"x4" TEE	39	2	20+14 RT	21.5	5.0
19	8"x4" TEE	40	2	20+94 RT	20.0	5.5
20	8"x4" TEE	41	2	21+75 RT	18.5	5.5
21	8"x4" TEE	42	2	24+40 RT	20.5	5.5
22	8"x4" TEE	43	2	25+10 RT	22.0	5.0
23	8"x4" TEE	44	2	26+47 RT	25.5	6.0





1995 Midfield Rd
Wichita, KS 67209
(316) 264-8008



CITY OF WICHITA
WICHITA, KANSAS



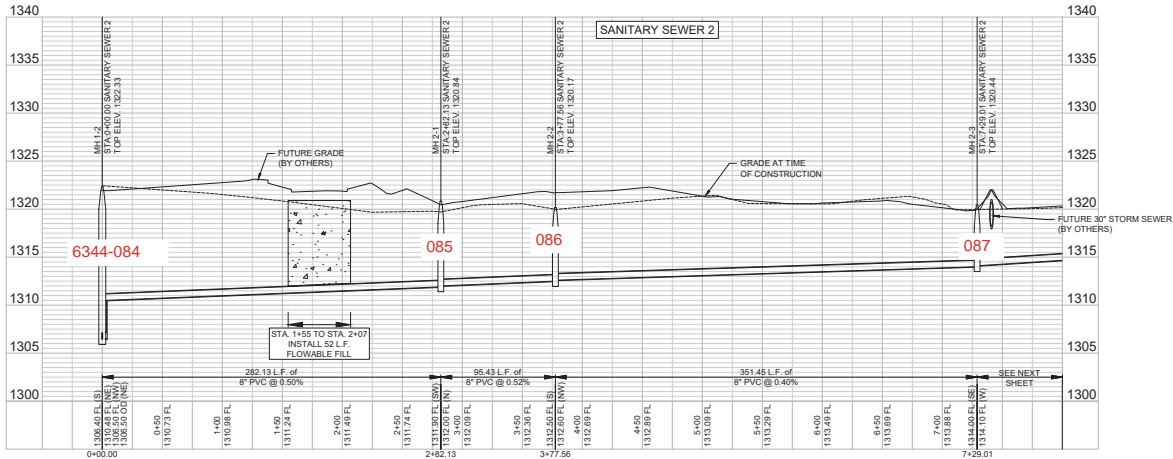
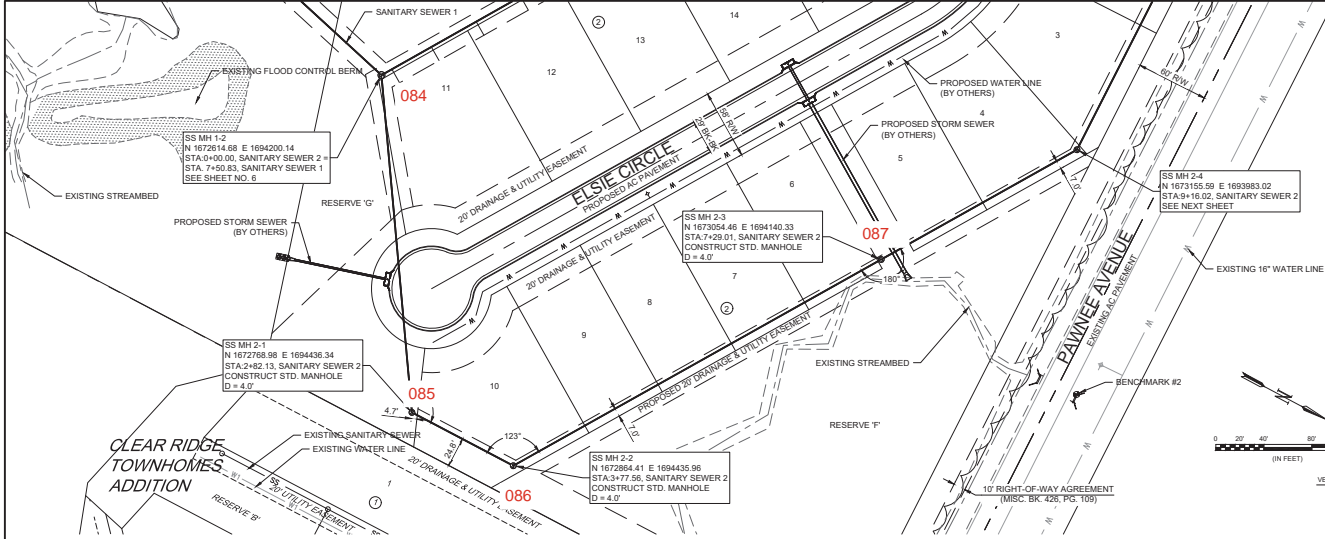
BUREAU OF PINES ADDITION N
SANITARY SEWER EXTENSION

SANITARY SEWER 1 P&P
(3 OF 3)

JOB NO.: 22141027
DATE: AUG 2024
DESIGNED BY: CDJ
DRAWN BY: CDJ

IF NOT ON THIS SHEET
ORIGINALLY DRAWN BY:
DRAWING NUMBER

SHEET NUMBER **9** OF 25





1905 Midfield Rd
Wichita, KS 67209
(316) 264-8008



CITY OF WICHITA
WICHITA, KANSAS



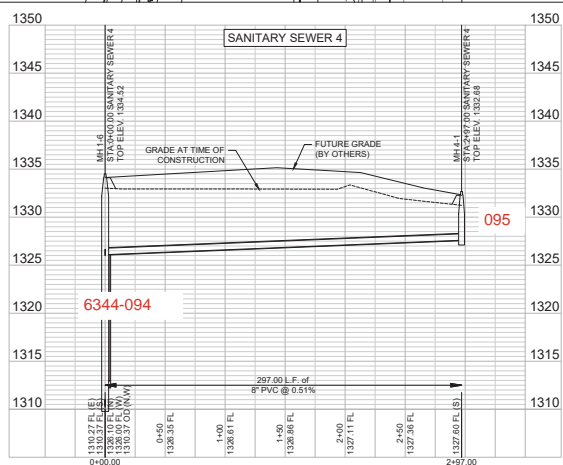
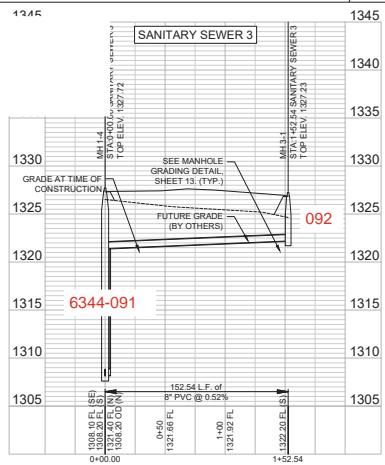
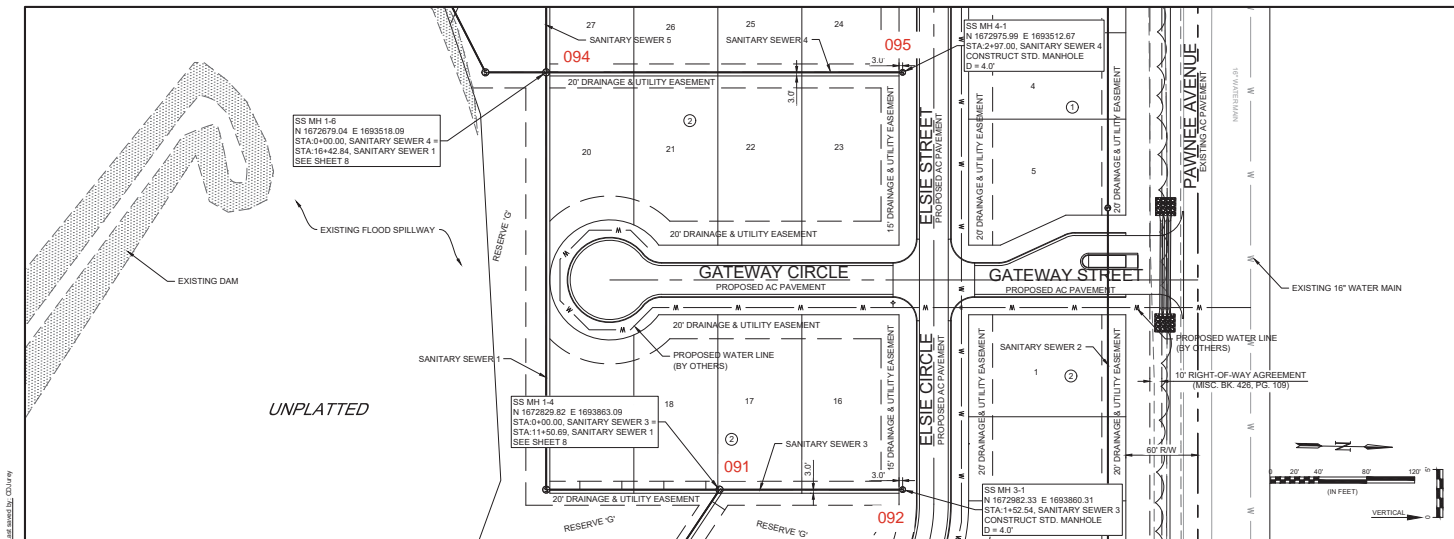
BUREAU OF PUBLIC WORKS
SANITARY SEWER EXTENSION

**SANITARY SEWER 2 P&P
(1 OF 2)**

JOB NO.: 22141027
DATE: AUG 2024
DESIGNED BY: CDJ
DRAWN BY: CDJ

SHEET NUMBER **10** OF 25

FILE: L:\0022141027 - Buffalo Plains Phase 1D - 10' W/10' SANITARY SEWER - SHEET SANITARY SEWER 2.PWP DATE: 8/13/2024 11:56 AM JBL/MS/DJG/CDJ/AVY
 L:\0022141027 - Buffalo Plains Phase 1D - 10' W/10' SANITARY SEWER - SHEET SANITARY SEWER 2.PWP DATE: 8/13/2024 11:56 AM JBL/MS/DJG/CDJ/AVY



FILE: L:\022321\022 - 8\"/>



1905 Midfield Rd
 Wichita, KS 67209
 (316) 264-8008



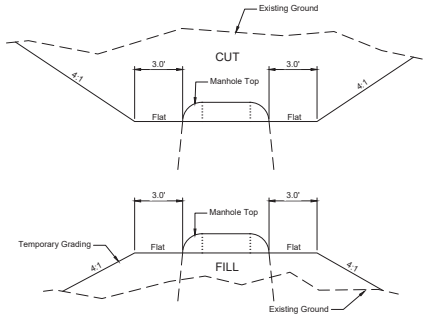
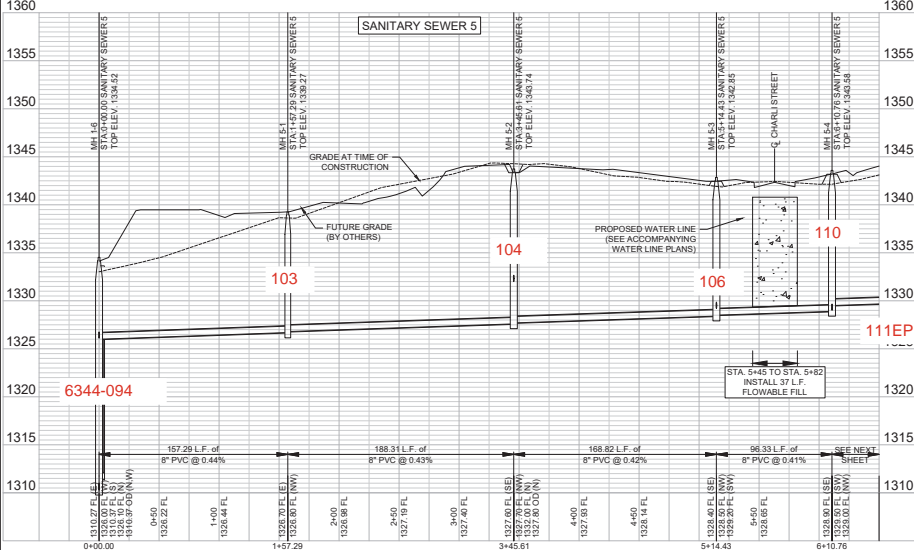
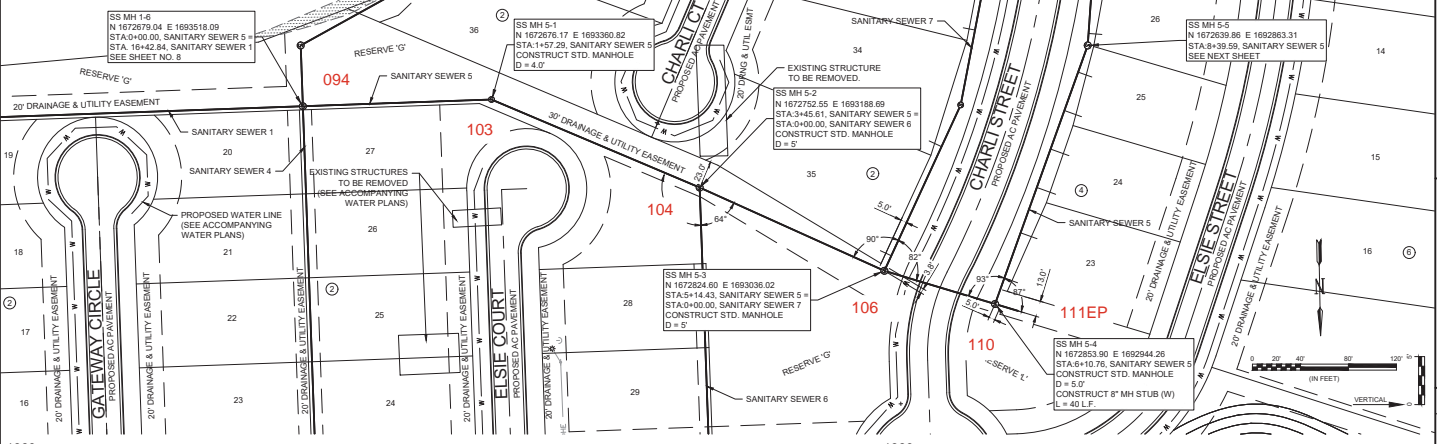
CITY OF WICHITA
 WICHITA, KANSAS

BUREAU OF PIPES, ADDITION,
 SANITARY SEWER EXTENSION

JOB NO.: 22141027
 DATE: AUG 2024
 DESIGNED BY: CDJ
 DRAWN BY: CDJ

DRAWING NUMBER
 SHEET NUMBER **12** OF 25

FILE: L:\0227241007 - Buffalo Plains Phase 10\DWG\SANITARY SEWER 5\REDESIGN SANITARY SEWER 5.dwg DATE: 03/20/24 11:56 AM BY: MCDONALD, CDJ/ary
 PLOTTED: 03/20/24 11:56 AM BY: MCDONALD, CDJ/ary
 PLOT DATE: 03/20/24 11:56 AM
 PLOT SCALE: 1"=40' LAYOUT SCALE: 1"=40'



TYPICAL SECTION FOR TEMPORARY GRADING AROUND MANHOLES
 Not to Scale
 NOTE: THE COST FOR TEMPORARY GRADING AROUND MANHOLES IS SUBSIDIARY TO THE BID ITEMS FOR MANHOLE CONSTRUCTION.

G GARVER
 THE DESIGN OF ALL LAYOUTS, ELEVATIONS, AND MATERIALS SHALL BE CONSIDERED RESPONSIBILITY OF PROFESSIONALS AND NOT THE PROPERTY OF GARVER. THE PROFESSIONAL ENGINEER OR ARCHITECT IS NOT RESPONSIBLE FOR THE ACCURACY OF THIS DOCUMENT. NO PART OF THIS DOCUMENT SHALL BE REPRODUCED OR TRANSMITTED IN ANY FORM OR BY ANY MEANS, ELECTRONIC OR MECHANICAL, INCLUDING PHOTOCOPYING, RECORDING, OR BY ANY INFORMATION STORAGE AND RETRIEVAL SYSTEM, WITHOUT THE WRITTEN PERMISSION OF GARVER. PROFESSIONAL SERVICES AGREEMENT FOR THIS PROJECT.

1905 Midfield Rd
 Wichita, KS 67209
 (316) 264-8008

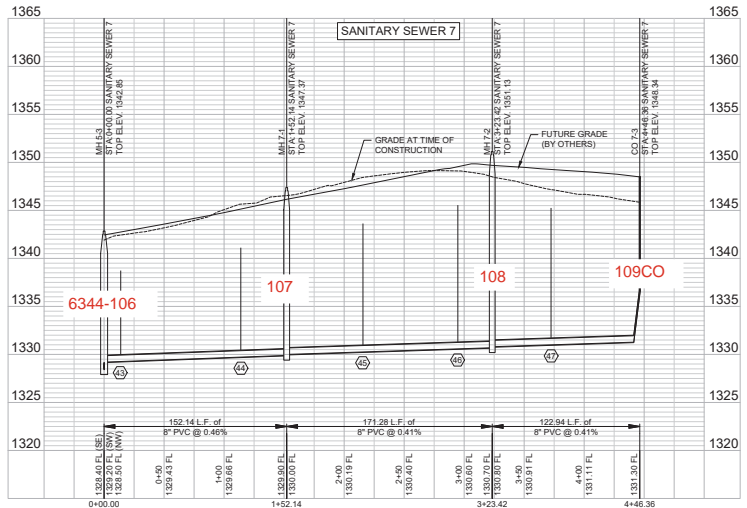
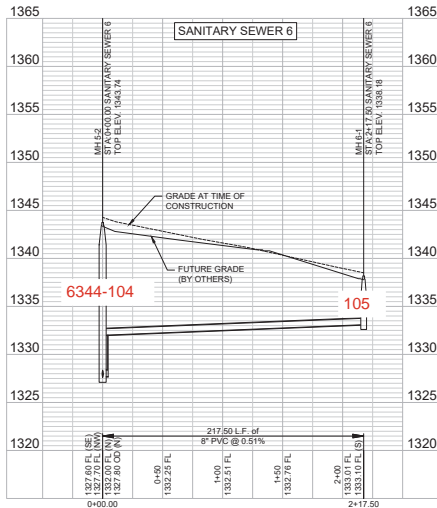
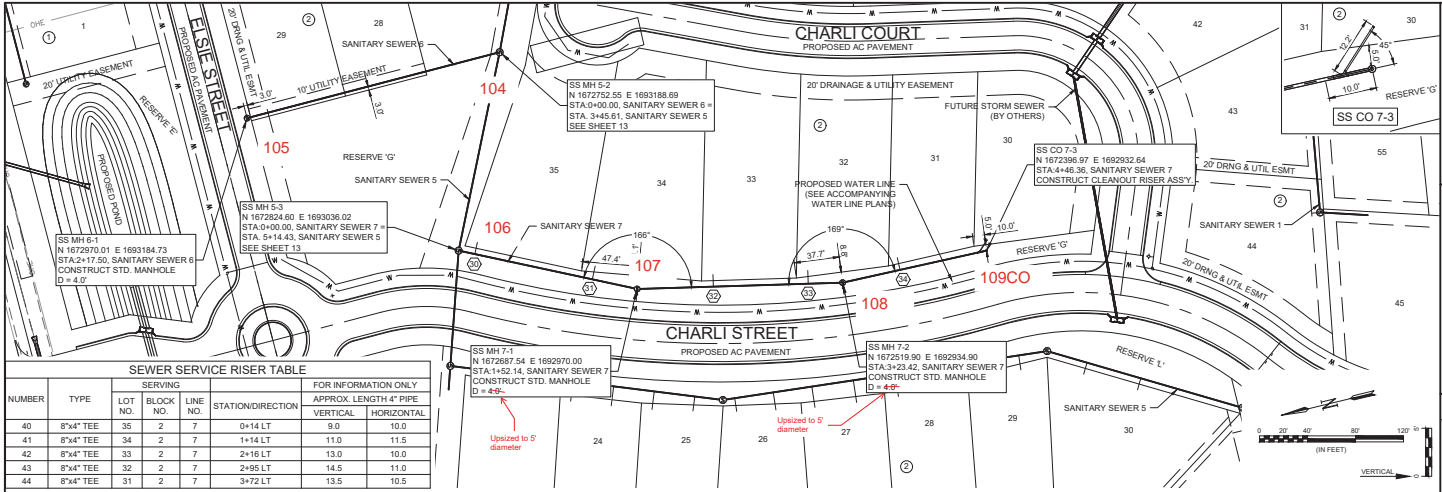
CITY OF WICHITA
 WICHITA, KANSAS

BUREAU OF PAVES, ADDITION, & SANITARY SEWER EXTENSION

SANITARY SEWER 5 P&P
 (1 OF 2)

JOB NO.: 22741007
 DATE: AUG 2024
 DESIGNED BY: CDJ
 DRAWN BY: CDJ

DRAWING NUMBER
 SHEET NUMBER **13** OF 25



GARBER ENGINEERING, INC.
 1905 Midfield Rd
 Wichita, KS 67209
 (316) 264-8008

CITY OF WICHITA
 WICHITA, KANSAS

RUEBAL D. PINES, ADDITION TO SANITARY SEWER EXTENSION

SANITARY SEWERS 6 & 7 P&P

JOB NO.: 22741027
 DATE: AUG 2024
 DESIGNED BY: CDJ
 DRAWN BY: CDJ

DRAWING NUMBER: _____
 SHEET NUMBER: **15** OF **25**

FILE: L:\02241027 - Ruebal Pines - Addition to Sanitary Sewers 6 & 7 - Aug. 2024 - 15 of 25.dwg
 DATE: 8/13/2024 8:12 AM
 USER: CDJ
 PLOT: 25x35
 PLOT SCALE: 1.0000
 PLOT ORIGIN: 0,0
 PLOT SIZE: 25.00x35.00
 PLOT UNIT: INCHES
 PLOT COLOR: 1,2,3,4,5,6,7,8,9,10,11,12,13,14,15,16,17,18,19,20,21,22,23,24,25,26,27,28,29,30,31,32,33,34,35,36,37,38,39,40,41,42,43,44,45,46,47,48,49,50,51,52,53,54,55,56,57,58,59,60,61,62,63,64,65,66,67,68,69,70,71,72,73,74,75,76,77,78,79,80,81,82,83,84,85,86,87,88,89,90,91,92,93,94,95,96,97,98,99,100,101,102,103,104,105,106,107,108,109,110,111,112,113,114,115,116,117,118,119,120,121,122,123,124,125,126,127,128,129,130,131,132,133,134,135,136,137,138,139,140,141,142,143,144,145,146,147,148,149,150,151,152,153,154,155,156,157,158,159,160,161,162,163,164,165,166,167,168,169,170,171,172,173,174,175,176,177,178,179,180,181,182,183,184,185,186,187,188,189,190,191,192,193,194,195,196,197,198,199,200,201,202,203,204,205,206,207,208,209,210,211,212,213,214,215,216,217,218,219,220,221,222,223,224,225,226,227,228,229,230,231,232,233,234,235,236,237,238,239,240,241,242,243,244,245,246,247,248,249,250,251,252,253,254,255,256,257,258,259,260,261,262,263,264,265,266,267,268,269,270,271,272,273,274,275,276,277,278,279,280,281,282,283,284,285,286,287,288,289,290,291,292,293,294,295,296,297,298,299,300,301,302,303,304,305,306,307,308,309,310,311,312,313,314,315,316,317,318,319,320,321,322,323,324,325,326,327,328,329,330,331,332,333,334,335,336,337,338,339,340,341,342,343,344,345,346,347,348,349,350,351,352,353,354,355,356,357,358,359,360,361,362,363,364,365,366,367,368,369,370,371,372,373,374,375,376,377,378,379,380,381,382,383,384,385,386,387,388,389,390,391,392,393,394,395,396,397,398,399,400,401,402,403,404,405,406,407,408,409,410,411,412,413,414,415,416,417,418,419,420,421,422,423,424,425,426,427,428,429,430,431,432,433,434,435,436,437,438,439,440,441,442,443,444,445,446,447,448,449,450,451,452,453,454,455,456,457,458,459,460,461,462,463,464,465,466,467,468,469,470,471,472,473,474,475,476,477,478,479,480,481,482,483,484,485,486,487,488,489,490,491,492,493,494,495,496,497,498,499,500,501,502,503,504,505,506,507,508,509,510,511,512,513,514,515,516,517,518,519,520,521,522,523,524,525,526,527,528,529,530,531,532,533,534,535,536,537,538,539,540,541,542,543,544,545,546,547,548,549,550,551,552,553,554,555,556,557,558,559,560,561,562,563,564,565,566,567,568,569,570,571,572,573,574,575,576,577,578,579,580,581,582,583,584,585,586,587,588,589,590,591,592,593,594,595,596,597,598,599,600,601,602,603,604,605,606,607,608,609,610,611,612,613,614,615,616,617,618,619,620,621,622,623,624,625,626,627,628,629,630,631,632,633,634,635,636,637,638,639,640,641,642,643,644,645,646,647,648,649,650,651,652,653,654,655,656,657,658,659,660,661,662,663,664,665,666,667,668,669,670,671,672,673,674,675,676,677,678,679,680,681,682,683,684,685,686,687,688,689,690,691,692,693,694,695,696,697,698,699,700,701,702,703,704,705,706,707,708,709,710,711,712,713,714,715,716,717,718,719,720,721,722,723,724,725,726,727,728,729,730,731,732,733,734,735,736,737,738,739,740,741,742,743,744,745,746,747,748,749,750,751,752,753,754,755,756,757,758,759,760,761,762,763,764,765,766,767,768,769,770,771,772,773,774,775,776,777,778,779,780,781,782,783,784,785,786,787,788,789,790,791,792,793,794,795,796,797,798,799,800,801,802,803,804,805,806,807,808,809,810,811,812,813,814,815,816,817,818,819,820,821,822,823,824,825,826,827,828,829,830,831,832,833,834,835,836,837,838,839,840,841,842,843,844,845,846,847,848,849,850,851,852,853,854,855,856,857,858,859,860,861,862,863,864,865,866,867,868,869,870,871,872,873,874,875,876,877,878,879,880,881,882,883,884,885,886,887,888,889,890,891,892,893,894,895,896,897,898,899,900,901,902,903,904,905,906,907,908,909,910,911,912,913,914,915,916,917,918,919,920,921,922,923,924,925,926,927,928,929,930,931,932,933,934,935,936,937,938,939,940,941,942,943,944,945,946,947,948,949,950,951,952,953,954,955,956,957,958,959,960,961,962,963,964,965,966,967,968,969,970,971,972,973,974,975,976,977,978,979,980,981,982,983,984,985,986,987,988,989,990,991,992,993,994,995,996,997,998,999,1000