

## 11. Servicing and maintenance



### Damage caused by inappropriate maintenance!

- Servicing and maintenance must be carried out exclusively by suitably qualified personnel having been authorised by the end user or the contractor of the plant. Therefore, we recommend contacting our service.
- Only perform servicing and maintenance tasks when the device is switched off.

### AUMA Service & Support

AUMA offer extensive service such as servicing and maintenance as well as customer product training. For the relevant contact addresses, please refer to <Addresses> in this document or to the Internet (www.auma.com).

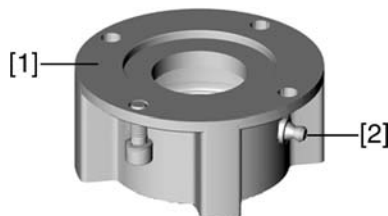
### 11.1. Preventive measures for servicing and safe operation

The following measures are required to ensure safe device operation:

#### 6 months after commissioning and then every year

- Carry out visual inspection:  
Cable entries, cable glands, blanking plugs, etc. have to be checked for correct tightness and sealing.  
Respect torques according to manufacturer's details.
- Check fastening screws between actuator and gearbox/valve for tightness. If required, fasten screws while applying the tightening torques as indicated in chapter <Assembly>.
- When rarely operated: Perform test run.
- For devices with output drive A: Press in Lithium soap EP multi-purpose grease on mineral oil base at the grease nipple with a grease gun.
- Lubrication of the valve stem must be done separately.

Figure 53: Output drive type A



- [1] Output drive type A
- [2] Grease nipple

Table 14: Grease quantities for bearing of output drive type A

Output drive	A 07.2	A 10.2	A 14.2	A 16.2
Quantity [g] <sup>1)</sup>	1.5	2	3	5

1) For grease at density  $\rho = 0.9 \text{ kg/dm}^3$

#### For enclosure protection IP68

After continuous immersion:

- Check actuator.
- In case of ingress of water, locate leaks and repair, dry device correctly and check for proper function.

### 11.2. Maintenance

- Lubrication**
- In the factory, the gear housing is filled with grease.

- Grease change is performed during maintenance
  - Generally after 4 to 6 years for modulating duty.
  - Generally after 6 to 8 years if operated frequently (open-close duty).
  - Generally after 10 to 12 years if operated rarely (open-close duty).
- We recommend exchanging the seals when changing the grease.
- No additional lubrication of the gear housing is required during operation.

### 11.3. Disposal and recycling

Our devices have a long lifetime. However, they have to be replaced at one point in time. The devices have a modular design and may, therefore, easily be separated and sorted according to materials used, i.e.:

- electronic scrap
- various metals
- plastics
- greases and oils

The following generally applies:

- Greases and oils are hazardous to water and must not be released into the environment.
- Arrange for controlled waste disposal of the disassembled material or for separate recycling according to materials.
- Observe the national regulations for waste disposal.