

GENERAL NOTES:

1. The Contractor shall comply with all applicable safety regulations. All construction shall be completed following current City Standard Specifications and Special Provisions.

2. Contractor will be required to provide notice to utility companies a minimum of seventy-two (72) hours prior to any excavation, as follows:

Kansas One-Call 687-2470

The Contractor must notify the following in case of an emergency:

- AT&T 1-800-246-8464
- Black Hills Energy 1-800-694-8989
- City of Wichita Water & Sewer Dept. 1-316-219-8921
- City of Wichita Stormwater 1-316-268-4090
- City of Wichita Traffic 1-316-268-4034
- Cox Communications 1-888-249-3530
- Energy 1-800-544-4857
- Kansas Gas Service 1-888-482-4950

3. Utility service lines, poles, etc. are to be adjusted as necessary by others prior to construction unless the plans specifically call for their adjustment by the Contractor or unless the plans specifically identify a utility to be adjusted by its owner during construction. Existing utilities and their location, as shown on the plans, represent the best information obtainable for design. The Contractor will be required to work around existing utilities within the right-of-way which do not conflict with proposed construction.

4. Rubble from the removal of miscellaneous structures and excess excavation which is to be wasted shall be disposed of on sites to be provided by the Contractor. These sites shall be approved by the Engineer as to suitability, appearance and site location. Locations, in the opinion of the Engineer, that will leave an unsightly appearance will not be approved. All disposal sites must be approved by the Kansas Department of Health and Environment. Material either stockpiled or disposed of in a flood plain will require a Kansas State Board of Agriculture permit. Any material dumped in waters of the United States or wetlands is subject to U.S. Corps. of Engineers permitting regulations. Any material buried or stockpiled beyond approved construction limits will require additional archaeological investigations unless buried in a previously approved borrow location.

5. Trees and shrubs in public right-of-way which are in direct conflict with proposed new construction shall be removed by the Contractor with the Engineer's approval. Trees and shrubs which are not in direct conflict with proposed new construction shall be saved and protected from damage.

6. The Contractor shall give all property owners and/or tenants of developed property abutting the construction of this project a minimum of ten (10) days notice prior to start of construction by the contractor.

7. The Contractor shall be responsible for preserving property irons. The Contractor will be required to re-establish any property irons which are damaged or destroyed by his construction operations. Such irons shall be re-established by a licensed land surveyor in accordance with state laws.

8. The Engineering Division shall field locate water valves one time during construction when requested by the Contractor. It shall be the Contractor's responsibility to preserve such field locations during the construction process. Water valves, valve boxes or fire hydrants damaged during construction shall be repaired by Contractor at his own expense. Valve boxes and water meters within the project limits shall be adjusted to match field grades.

9. The Contractor shall notify the consultant engineer and Dawnita Reinhardt at 316-268-4574 with the City of Wichita with the anticipated construction start date and notify them of project completion. Staking and inspection for this project will be the responsibility of the Contractor.

10. If traffic will be impacted by construction, a traffic control plan must be submitted and approved by the City Traffic Engineer, Mike Armour at traffic@wichita.gov before construction can begin. The Contractor shall be responsible for all traffic control measures to facilitate construction. All construction zone markings and signage shall conform to the latest version of the Manual on Uniform Traffic Control Devices (MUTCD) as published by the US Dept. of Transportation, Federal Highway Administration. All costs associated with construction markings and signage shall be the Contractors responsibility.

11. All elevations shown are NAVD 88.

12. All areas disturbed during construction that will not be under

proposed pavement shall be restored to match existing conditions.

13. Any sidewalk, drive approach, or street pavement removed to construct project must have a pavement cut permit and be replaced by the city contractor. Permits can be obtained by calling 316-268-4501 or 316-268-4480.

14. All applicable fees (tap, equity, in lieu of & main benefit) must be paid before any connections can be made on this project. Quotes can be obtained on fees by calling 316-268-4555.

15. City maintenance of sanitary sewer mains ends at last structure within the easement or right of way.

16. All stubs and plugged pipes shall be located with green plastic tape in the same manner as risers.

17. Connecting to Existing Manholes:

Prior to laying sewer lines using existing stubs in existing manholes, the Contractor shall expose and verify the elevation, grade and alignment of existing stubs and notify the Engineer of any deviation from the plans. Where connection to an existing manhole that does not have an existing stub or the stub is unusable due to elevation grade or alignment, the Contractor shall bore cut into existing manhole wall to make connection using approved water stop gasket, and reshape the existing manhole invert to provide smooth flow. The cost to connecting to existing manholes is incidental to the project.

18. Contractor shall limit the extent of trench openings overnight and weekends to less than 50 feet.

19. Contractor shall provide positive drainage away from all manhole covers.

20. The Contractor shall prevent any construction debris from entering the existing sanitary sewer during construction.

21. The Contractor shall be responsible for maintaining continuous flow of sewage through construction. Contractors proposed method for maintaining sewage flow shall be submitted and approved by the Sewer Maintenance Division (316-268-4073) prior to starting and by-passing of sewage flows.

22. Any over excavation from manhole and pipe removal shall be backfilled with AB-3 compacted to 90-95% ASTM D698.

23. The Contractor shall protect from damage and support existing utilities through construction as approved by the utility owner and the Engineer at the contractor's expense.

SANITARY SEWER
to serve
LOT 1, BLOCK 1
EXPLORATION PLACE ADDITION
300 N MCLEAN BOULEVARD

CITY OF WICHITA, KANSAS

PAUL GUNZELMAN, P.E. City Engineer

Project Number

2024-021284PPS (53030982)

5477D

SS1-07

Start Date: 2024-11-06

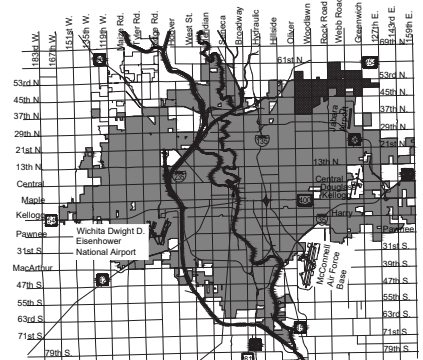
Construction Completion Date: 2024-11-20

Inspector: A. Thompson/Jesus Leos

Design/Inspecting Firm: Kaw Valley Engineering, Inc.

Contractor: Dondlinger Construction

Built in general conformance to construction plans, except where noted on plans.



PROJECT LOCATION Vicinity Map



BENCHMARKS	
BENCHMARK #1	CHISELED SQUARE WITH DIVOT ON THE TOP OF CURB ON THE WEST SIDE OF THE EASTERLY ENTRANCE TO EXPLORATION PLACE, 23' NORTH OF THE NORTH CURB OF MCLEAN BLVD, ELEVATION = 1299.88 (NAVD88, G18)
BENCHMARK #2	CHISELED SQUARE WITH DIVOT ON THE TOP OF CURB ON THE NORTH CURB RETURN AT THE NORTHEAST CORNER OF SENECA AND MCLEAN BLVD, ELEVATION = 1302.53 (NAVD88, G18)

SHEET INDEX	
1	COVER SHEET
2	SANITARY SEWER LINE 1 PLAN AND PROFILE
3-4	EROSION CONTROL PLANS
5	C.O.W. BACK OF CURB PROTECTION, CURB INLET PROTECTION AND CONSTRUCTION ENTRANCE
6	C.O.W. SILT FENCE DITCH CHECK AND BARRIER DETAILS
7	C.O.W. STRAW BAIL DITCH CHECK AND BARRIER DETAILS
8	C.O.W. STREET IMPROVEMENT PROJECTS
9	C.O.W. SUBDIVISION DEVELOPMENT PROCESS
10	C.O.W. PRECAST SANITARY SEWER MANHOLE
11	C.O.W. MANHOLE FRAME AND COVER (SANITARY SEWER)
12	C.O.W. CLEANOUT RISER ASSEMBLY DETAIL
13	PLAT

APPROVED AS NOTED BY
WICHITA PUBLIC WORKS
ENGINEERING DIVISION

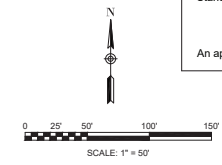
Engineering APPROVED BY SHAWN MELLIES (9-19-24)

Utilities APPROVED BY SCOTT MACEY (9-19-24)

NOTE TO CONTRACTORS

Installation, inspection and testing for this project is to be provided by a Licensed Consulting Engineering Firm under contract with the Owner/Developer. Said inspection to be in accordance with the City of Wichita standard construction engineering practices and certified by a Licensed Professional Engineer in the state of Kansas. No work shall be performed by the Contractor without such inspection nor shall any work be commenced without written authorization by the City Engineering. All Construction and Materials shall comply with the current City of Wichita Specifications and Standards and Special Provisions. (on file and available at Wichita.gov).

An approved copy of these plans signed by City staff are required on-site.

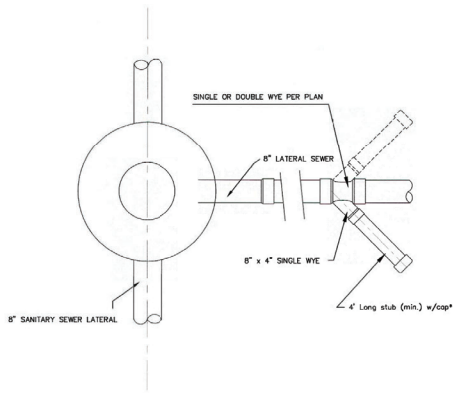
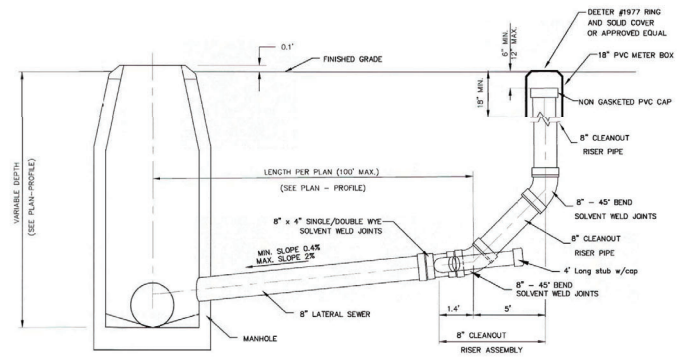


NOTE: All coordinates listed are modified NAD83 Kansas State Plane Zone South unless otherwise noted. To convert listed coordinates to NAD83 Kansas State Plane Zone South coordinates multiply the northing and easting by the project scale factor of 0.9998665. Elevation datum is NAVD88 Geoid 12B unless otherwise noted.

F02-2400101-EP2-PLAY-SCPE

PLANS PREPARED BY

GARVER
1996 Midfield Rd.
Wichita, KS 67206
(316) 264-8008
www.GarverUSA.com
Project No.



CLEANOUT RISER ASSEMBLY DETAIL
W/ MANHOLE CONNECTION

* 4" BRANCH (EACH SIDE) TO SERVE AS 4" STUB TEMPORARY CAP UNTIL SERVICE CONNECTION IS REQUIRED. SINGLE OR DOUBLE WYE TO BE USED WHERE INDICATED ON PLAN. WHEN IN GROUNDWATER 4" STUB NEEDS VERTICAL RISER.

** 8" LATERAL TO BE AIR-TESTED UP TO THE TOP OF PVC PIPE, PER STANDARD SPECIFICATIONS.

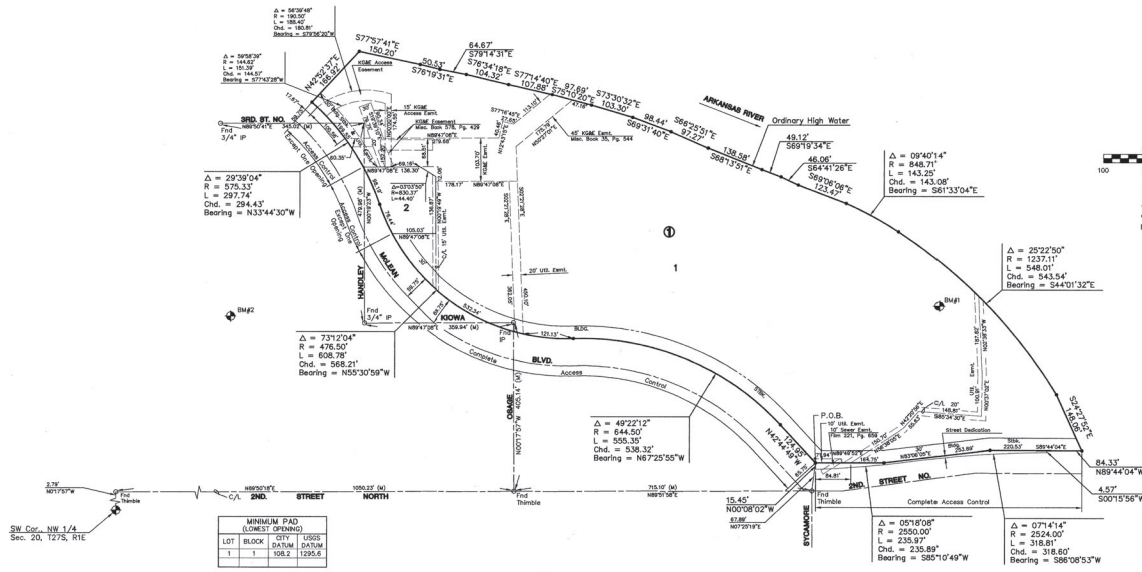
GENERAL NOTES:
 TAPS: NO TAPS ARE PERMITTED BETWEEN THE MANHOLE/TEE AND THE CLEANOUT RISER.
 BEDDING: BEDDING AROUND THE SANITARY SEWER RISER SHALL BE COMPACTED PIPE BEDDING TYPE 2. (TYPE 1 IN GROUNDWATER).
 MATERIAL: RISER AND LATERALS SHALL BE CONSTRUCTED OF SDR-35 PVC PIPE. TEES SHALL BE SDR-26 PIPE, 4" STUBS SHALL BE SCHEDULE 40.
 CONNECTIONS: ALL SERVICE CONNECTIONS MUST BE MADE TO THE WYE PROVIDED.



CLEANOUT RISER ASSEMBLY DETAIL		
<small>CITY ENGINEER</small> GARY JANZEN, P.E.		
<small>PROJECT NUMBER</small> F02-2400101	<small>OCA NUMBER</small> ####	<small>DATE</small> 12/2011
<small>CITY ENGINEER'S OFFICE</small> CITY HALL - SEVENTH FLOOR 455 NORTH MAIN STREET WICHITA, KANSAS 67202-1420 (316) 268-4501		<small>SHEET</small> CU503 12 OF 13

PC77-1A

FINAL PLAT EXPLORATION PLACE ADDITION AN ADDITION TO WICHITA, SEDGWICK COUNTY, KANSAS



PC77-1A

This digital plat record accurately reproduces in all details the original plat filed with the Sedgwick County Register of Deeds. Digitized under the supervision of Register of Deeds Bill Meek by Sedgwick County Geographic Information Systems.

Bill Meek, Register of Deeds
Normal extension of original plat



© 2024 GARVER, LLC
THIS DOCUMENT, ALONG WITH THE DEED AND RECORDS CONVEYED HEREIN, SHALL BE CONSIDERED INSTRUMENTS OF PROFESSIONAL SERVICE AND ARE PROPERTY OF GARVER, LLC AND REPRODUCTION OF THIS DOCUMENT, ALONG WITH THE DEED AND RECORDS CONVEYED HEREIN, IS PROHIBITED UNLESS AUTHORIZED IN WRITING BY GARVER, LLC OR EXPLICITLY ALLOWED BY THE GOVERNING PROFESSIONAL SERVICES AGREEMENT FOR THIS WORK.

1995 Midfield Road
Wichita, KS 67209
(316) 264-8008



REV.	DATE	DESCRIPTION	BY



EXPLORATION PLACE
WICHITA, KANSAS

SANITARY SEWER IMPROVEMENTS

COPY OF PLAT

JOB NO.: F02-2400101
DATE: SEPT. 2024
DESIGNED BY: SRS
DRAWN BY: JSB

BAR IS ONE INCH ON ORIGINAL DRAWING
IF NOT ONE INCH ON THIS SHEET, ADJUST SCALES ACCORDINGLY

PLAT

SHEET NUMBER