

SANITARY SEWER IMPROVEMENTS
to serve

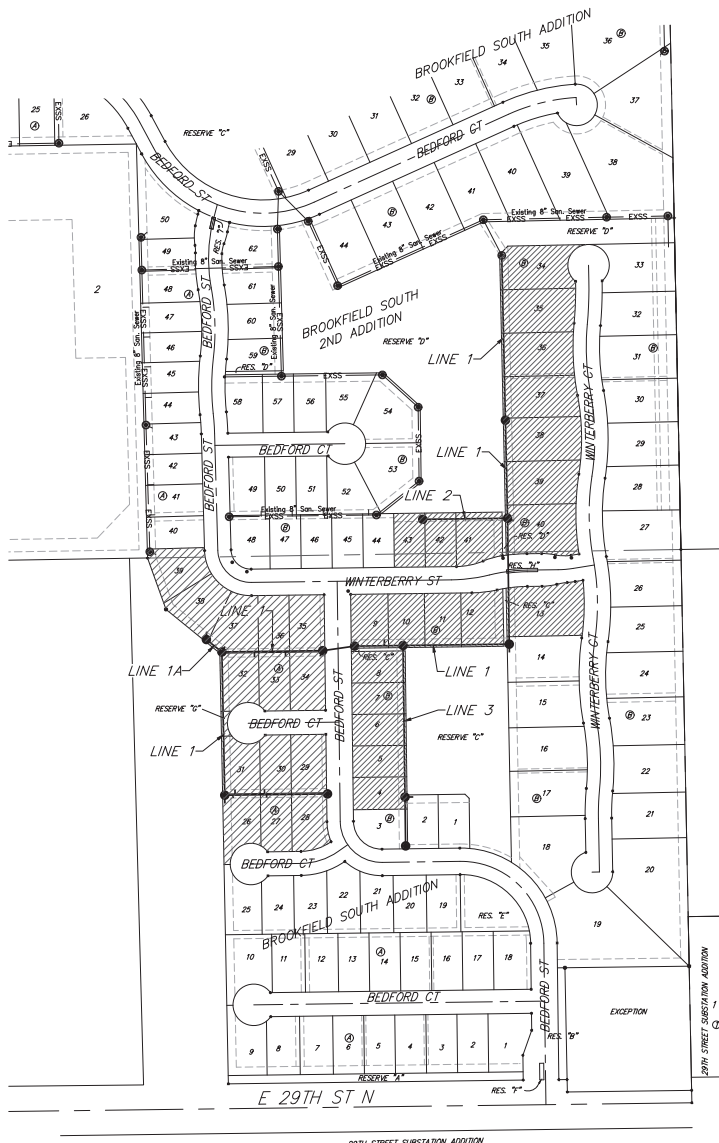
BROOKFIELD SOUTH 2ND ADDITION - PHASE II

CITY OF WICHITA, KANSAS

Paul Gunzelman, P.E., City Engineer
Project Number: 468-2022-012078
47273925 E5088

BASIN: Walnut-2
6251C

Nowak Construction
Released: 4-15-26



BENCHMARKS

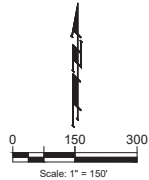
RR spike in asphalt, SW Cor.,
N1/2, SW1/4, Sec. 34, TWP. 26-S,
R-2-E
Elev. = 1400.59 NAVD

R.R. spike in E. face of power pole,
174 1/2 N. of S. line, N1/2, SW1/4,
& 49 1/2 E. of W. line, SW1/4, SEC.
34, TWP. 26-S, R-2-E
Elev. = 1398.64 NAVD88

Brass Disc in top of curb adjacent
to fire hydrant north of the NW
Cor., Lot 43, Blk B, Brookfield
South Addn.
Elevation=1386.77 (NAVD88)

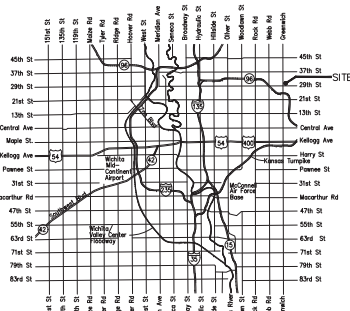
SHEET INDEX

- Title Sheet
- 1-4 Line 1 & Line 1A
- 5 Line 2 & Line 3
- 6 Erosion Control Plan
- 7-11 Erosion Control BMP Details
- 12 Precast Manhole Detail
- 13 Frame & Cover Detail
- 14 Vertical Riser Detail
- 15 Coordinate Sheet
- 16-17 Copy of Plat



GENERAL NOTES:

1. Contractor will be required to provide notice to utility companies a minimum of seventy-two (72) hours prior to any excavation, as follows:
Kansas One-Call 687-2470
The Contractor must notify the following in case of an emergency:
Cox Communications 262-4270
Kansas Gas Service 268-4563
Westar Energy 1-888-482-4950
Aquila Energy 383-8650
AT&T 1-800-303-0357
City of Wichita Water Dept. 268-2245
City of Wichita Sewer Maint. 268-4563
City of Wichita Storm Sewer Maint. 268-4024
City of Wichita Traffic Maint. 268-4034
Conoco Phillips Pipeline Co. 1-877-267-2930
Southern Star Pipeline Co. 529-6600
Kinder-Morgan Pipeline Co. 1-888-644-5658
2. Utility service lines, poles, valve boxes, meters, and etcetera are to be adjusted as necessary by others prior to construction unless the plans specifically call for their adjustment by the Contractor or unless the plans specifically identify a utility to be adjusted by its owner during construction. Existing utilities and their location, as shown on the plans, represent the best information obtainable for design. The Contractor will be required to work around existing utilities within the right-of-way which do not conflict with proposed construction.
3. Rubble from the removal of miscellaneous structures and excess excavation which is to be wasted shall be disposed of on sites to be provided by the Contractor. These sites shall be approved by the Engineer, as to suitability, appearance and site location. Locations, in the opinion of the Engineer, that will leave an unsightly appearance will not be approved. All disposal sites must be approved by the Kansas Department of Health and Environment. Material either stockpiled or disposed of in a flood plain would require a Kansas State Board of Agriculture permit. Any material dumped in waters of the United States or wetlands is subject to U.S. Corps of Engineers permitting regulations. Any material buried or stockpiled beyond approved construction limits would require additional archaeological investigations unless buried in a previously approved borrow location.
4. Trees and shrubs in public right-of-way which are in direct conflict with proposed new construction shall be removed by the Contractor with the Engineer's approval. Trees and shrubs which are not in direct conflict with proposed new construction shall be saved and protected from damage.
5. The Contractor shall give all property owners and/or tenants of developed property abutting the construction of this project a minimum of ten (10) days notice prior to start of construction.
6. The Contractor shall be responsible for preserving property irons. The Contractor will be required to re-establish any property irons which are damaged or destroyed by his construction operations. Such irons shall be re-established by a licensed land surveyor in accordance with state laws.
7. All existing and proposed erosion control measures including silt fencing, erosion control mat, straw bales, inlet barriers, and const. entrance shall be maintained throughout construction by the contractor and until project is accepted by the City of Wichita. The on-site engineer shall complete weekly reports on the status of erosion control measures. The contractor shall be required to comply with maintenance and/or replacement of erosion control measures as determined by the on-site engineer until project is accepted by City of Wichita. Maintenance and/or replacement of erosion control measures to be paid by L.S. bid item "Maintain Existing BMP's."
8. All excess excavation shall remain on-site and shall be stockpiled or spread at a location determined by the engineer.
9. The Contractor shall be responsible for maintaining continuous flow of sewage through construction. Contractor's proposed method for maintaining sewage flow shall be approved by the Engineer. Cost of maintaining flow of sewage through construction will not be paid for directly and this cost shall be considered as subsidiary to the other pay items of work.
10. Areas within Res. "C" disturbed by construction shall be seeded and mulched as follows (Permanent Seeding):
SEED: Kansas Premium Fescue Blend 5#/1000 Sq. Ft.
Rye grass (PLS); 3#/1000 Sq. Ft.
FERTILIZER: 12-24-12 Ratio at 350 Lbs./Ac.
MULCH: 2 Tons Prairie Hay / Acre - where E.C. Mat not specified.
All other disturbed areas not in street R/W are to be seeded as follows (Temporary Seeding):
SEED: Rye grass (PLS) - 5#/1000 Sq. Ft.
All costs associated with seeding including mobilization, preparation of ground, seeding, fertilizing, mulching, etc. shall be included in the L.S. bid item "Seeding".
11. Trees and shrubs in the work area which are in direct conflict with proposed new construction shall be removed by the contractor ONLY with the Developer or Baughman Company approval. Trees and shrubs which are not in direct conflict with proposed new construction shall be saved and protected from damage. If trimming is necessary, a chainsaw shall be used. Breaking limbs with equipment will not be allowed. An on-site pre-construction meeting will occur prior to any construction to discuss tree removal, tree protection, and tree trimming.
12. The Developer for this project is Jeff Mullen
8100 E. 22nd St. N. Bldg 1000, Wichita, KS 67272
PH(316) 684-7300 email: jeff@tchdevelopment.com



VICINITY MAP

BENEFIT DISTRICT



BAUGHMAN COMPANY
315 Ellis St. Wichita, KS 67211 316-262-7271
BaughmanCo.com

BENCHMARKS:
 RR spike in asphalt, SW Cor.,
 N1/2, SW1/4, Sec. 34, TWP. 26-S,
 R-2-E.
 Elev. = 1400.59 NAVD

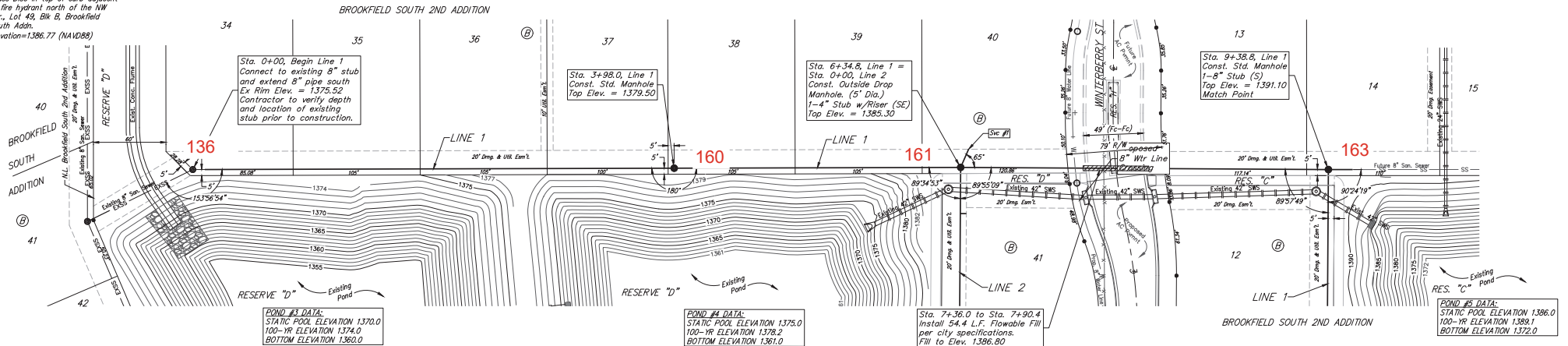
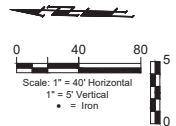
R.R. spike in E. face of power pole,
 174'± N. of S. line, N1/2, SW1/4
 & 49'± E. of N. line, SW1/4, SEC.
 34, TWP. 26-S, R-2-E.
 Elev. = 1398.64 NAVD88

Brass Disc in top of curb adjacent
 to fire hydrant north of the NW
 Cor., Lot 49, Blk B, Brookfield
 South Addn.
 Elevation=1386.77 (NAVD88)

SEWER SERVICE TABLE

NUMBER	TYPE	LOCATION				FOR INFORMATION ONLY	
		LOT NO.	BLOCK NO.	LINE NO.	STATION/ DIRECTION	APPROXIMATE LENGTH 4" PIPE	VERTICAL
1	4" Stub	40	B	1	6+34.8/RL	11.9'	16'

NOTE: The vertical portion of the riser shall be extended to 2' minimum above ground water elevation and 4' maximum below proposed ground elevation.

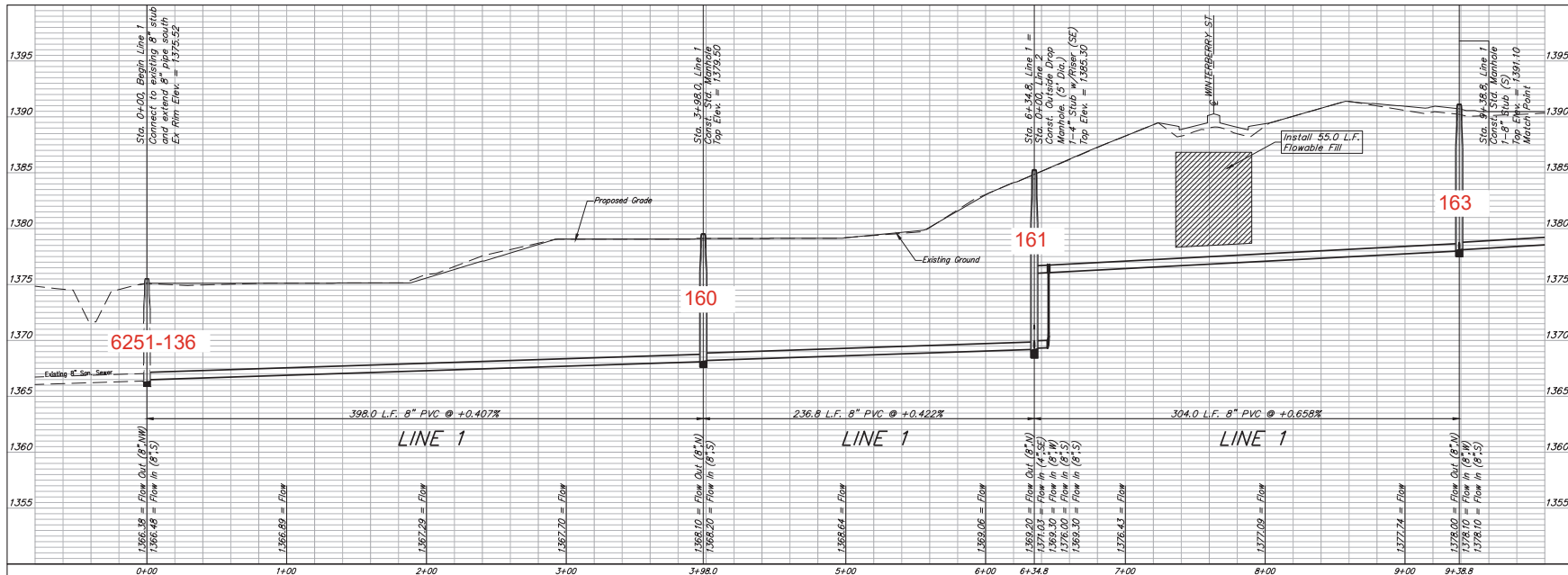


POND #3 DATA:
 STATIC POOL ELEVATION 1370.0
 100-YR ELEVATION 1374.0
 BOTTOM ELEVATION 1360.0

POND #4 DATA:
 STATIC POOL ELEVATION 1375.0
 100-YR ELEVATION 1378.2
 BOTTOM ELEVATION 1361.0

Sta. 7+36.0 to Sta. 7+90.4
 Install 54.4 L.F. Flowable Fill
 per city specifications.
 Fill to Elev. 1386.80

POND #5 DATA:
 STATIC POOL ELEVATION 1386.0
 100-YR ELEVATION 1389.1
 BOTTOM ELEVATION 1372.0



BAUGHMAN COMPANY
 315 Ellis St.
 Wichita, KS 67211
 316-262-7271
 BaughmanCo.com

LINE 1

SANITARY SEWER IMPROVEMENTS

PROJECT NUMBER:
 468-2022-012078

DESIGN: AEG DRAWN: JAK

DATE: Jul. 1, 2025

SHEET **2** OF **17**

File: C:\Project\Brookfield South 2nd Addition\Engineering\Phase 2\SS - sng

BENCHMARKS:
 RR spike in asphalt, SW Cor,
 N1/2, SW1/4, Sec. 34, TWP. 26-S,
 R-2-E.
 Elev. = 1400.59 NAVD

R.R. spike in E. face of power pole,
 174'± N. of S. line, N1/2, SW1/4
 & 49'± E. of N. line, SW1/4, SEC.
 34, TWP. 26-S, R-2-E.
 Elev. = 1398.64 NAVD88

Brass Disc in top of curb adjacent
 to fire hydrant north of the NW
 Cor., Lot 49, Blk B, Brookfield
 South Addn.
 Elevation=1386.77 (NAVD88)

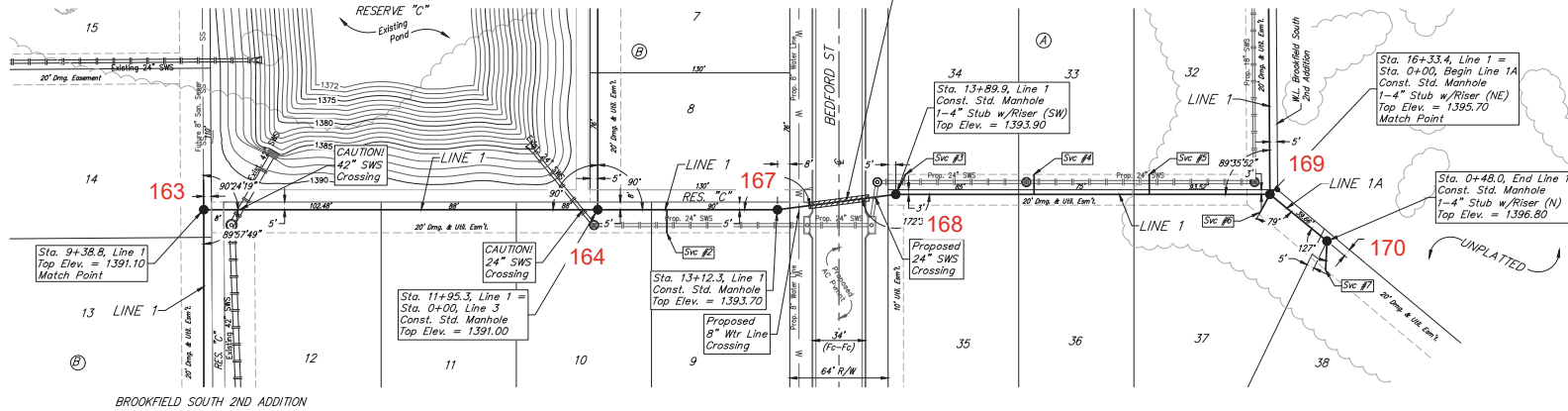
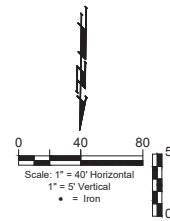
POND #5 DATA:
 STATIC POOL ELEVATION 1386.0
 100-YR ELEVATION 1389.1
 BOTTOM ELEVATION 1372.0

Sta. 13+32.9 to Sta. 13+66.3
 Install 33.4 L.F. Flowable Fill
 per city specifications.
 Fill to Elev. 1390.70

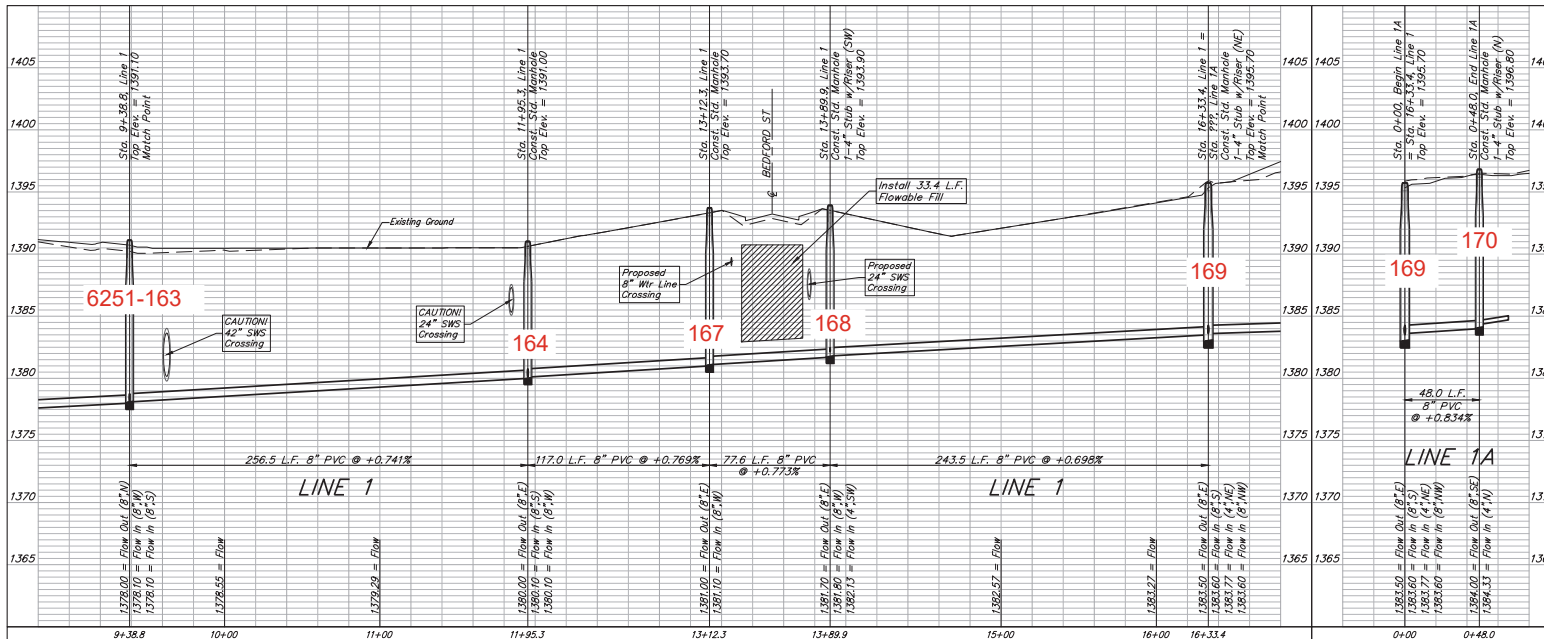
SEWER SERVICE TABLE

NUMBER	TYPE	LOCATION			FOR INFORMATION ONLY	
		LOT NO.	BLOCK NO.	LINE NO. STATION/DIRECTION	APPROXIMATE LENGTH 4" PIPE	VERTICAL HORIZONTAL
2	8" x 4" Tee	9	B	1 12+40.3/RL	6.6'	15'
3	4" Stub	34	A	1 13+89.9/LL	7.5'	13'
4	8" x 4" Tee	33	A	1 14+79.9/LL	5.1'	13'
5	8" x 4" Tee	32	A	1 15+54.9/LL	6.5'	13'
6	4" Stub	37	A	1 16+33.4/RL	7.2'	10'
7	4" Stub	38	A	1A 0+48.0/RL	7.9'	19'

NOTE: The vertical portion of the riser shall be extended to 2' minimum above ground water elevation and 4" maximum below proposed ground elevation.



BROOKFIELD SOUTH 2ND ADDITION



BAUGHMAN COMPANY
 315 Ellis St.
 Wichita, KS 67211
 316-262-7271
 BaughmanCo.com

LINE 1 & LINE 1A

SANITARY SEWER IMPROVEMENTS

PROJECT NUMBER:
468-2022-012078

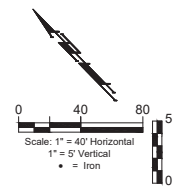
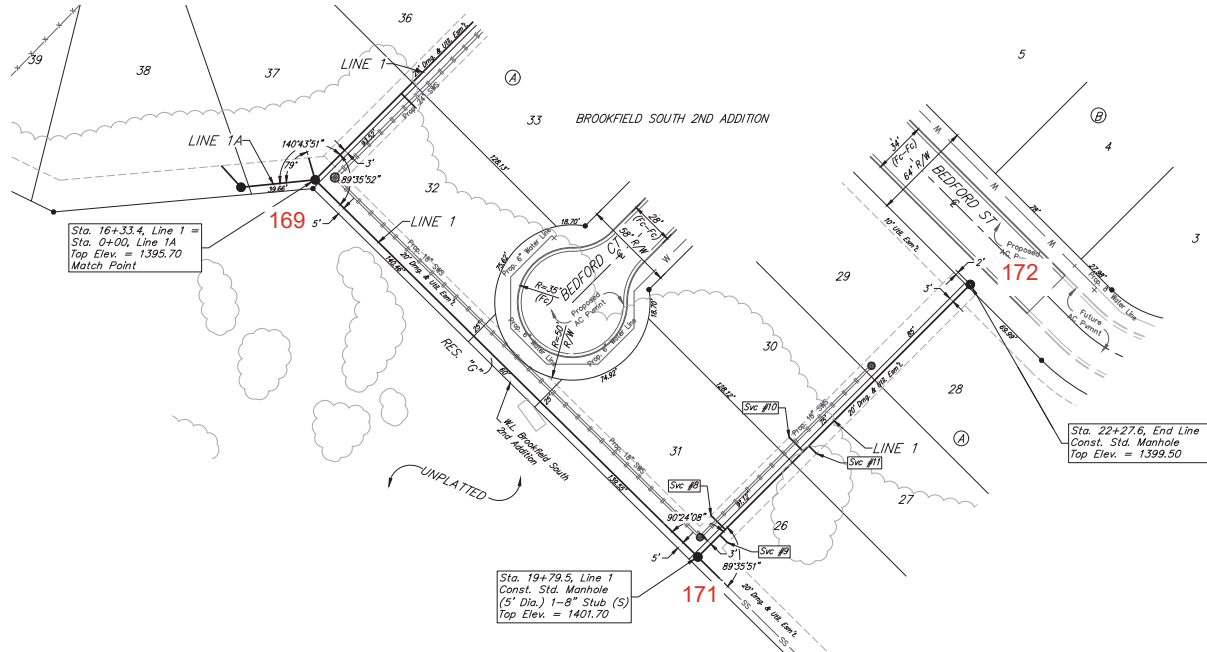
DESIGN: AEG DRAWN: JAK

DATE: Jul. 1, 2025

SHEET **3** OF **17**

File: C:\Project\Brookfield South 2nd Addition\Engineering\Phase 2\SS - 3.dwg

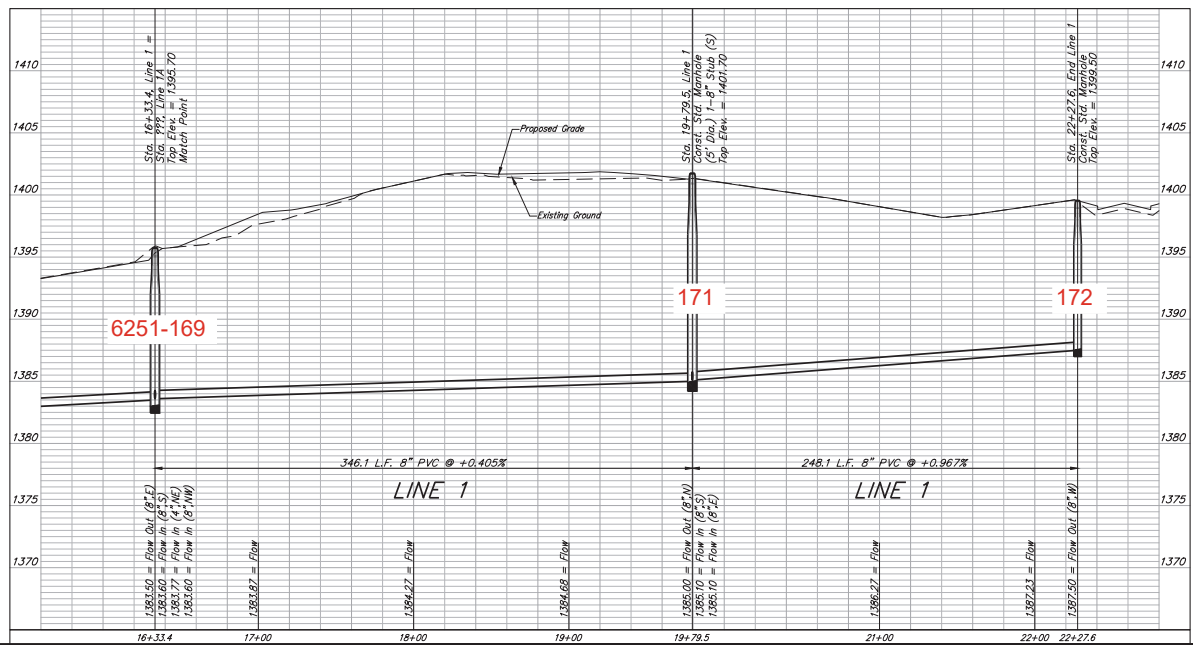
BENCHMARKS:
 RR spike in asphalt, SW Cor.,
 N1/2, SW1/4, Sec. 34, TWP. 26-S,
 R-2-E.
 Elev. = 1400.59 NAVD
 R.R. spike in E. face of power pole,
 174'± N. of S. line, N1/2, SW1/4
 & 49'± E. of W. line, SW1/4, SEC.
 34, TWP. 26-S, R-2-E.
 Elev. = 1398.64 NAVD88
 Brass Disc in top of curb adjacent
 to fire hydrant north of the NW
 Cor., Lot 49, Blk B, Brookfield
 South Addn.
 Elevation=1386.77 (NAVD88)



SEWER SERVICE TABLE

NUMBER	TYPE	LOCATION			FOR INFORMATION ONLY	
		LOT NO.	BLOCK NO.	LINE NO. STATION/DIRECTION	APPROXIMATE LENGTH 4" PIPE	VERTICAL
8	8" x 4" Tee	26	A	1 19+98.4/RL	11.6'	7'
9	8" x 4" Tee	31	A	1 20+04.4/LI	11.4'	13'
10	8" x 4" Tee	30	A	1 20+76.6/LI	8.4'	13'
11	8" x 4" Tee	27	A	1 20+80.6/RL	8.5'	7'

NOTE: The vertical portion of the riser shall be extended to 2" minimum above ground water elevation and 4" maximum below proposed ground elevation.



BAUGHMAN COMPANY
 315 Ellis St.
 Wichita, KS 67211
 316-262-7271
 BaughmanCo.com

BROOKFIELD SOUTH
 2ND ADDITION - PHASE II

LINE 1

SANITARY SEWER
 IMPROVEMENTS

PROJECT NUMBER:
 468-2022-012078

DESIGN: AEG DRAWN: JAK
 DATE: Jul. 1, 2025
 SHEET 4 OF 17

File: C:\Project\Brookfield South 2nd Addition\Engineering\Phase 2\SS - 040

BENCHMARKS:
 RR spike in asphalt, SW Cor.,
 N1/2, SW1/4, Sec. 34, TWP. 26-S,
 R-2-E.
 Elev. = 1400.59 NAVD

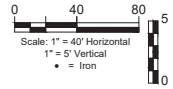
R.R. spike in E. face of power pole,
 174'± N. of S. line, N1/2, SW1/4
 & 49'± E. of W. line, SW1/4, SEC.
 34, TWP. 26-S, R-2-E.
 Elev. = 1398.64 NAVD88

Brass Disc in top of curb adjacent
 to fire hydrant north of the NW
 Cor., Lot 49, Blk B, Brookfield
 South Addn.
 Elevation=1386.77 (NAVD88)

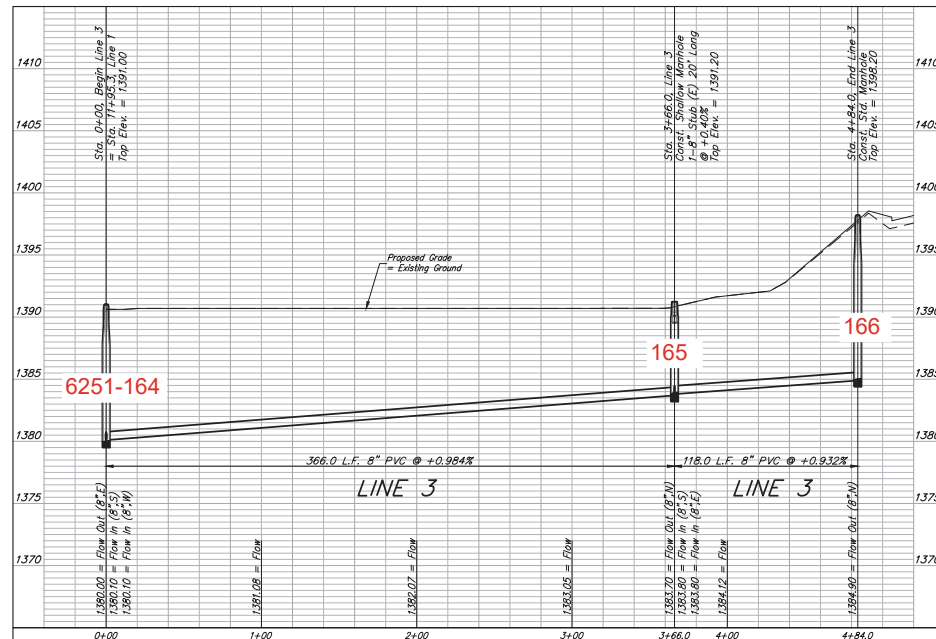
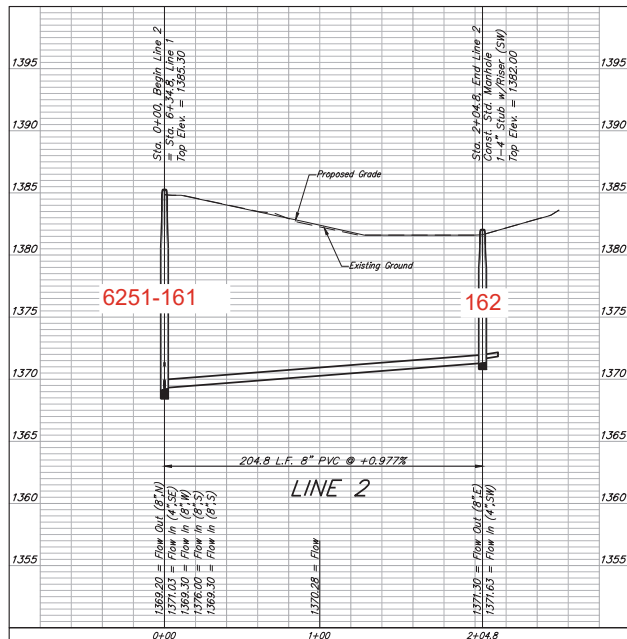
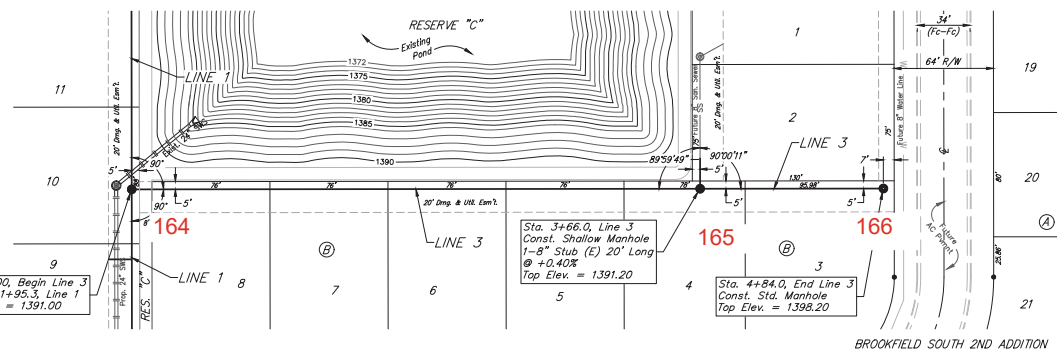
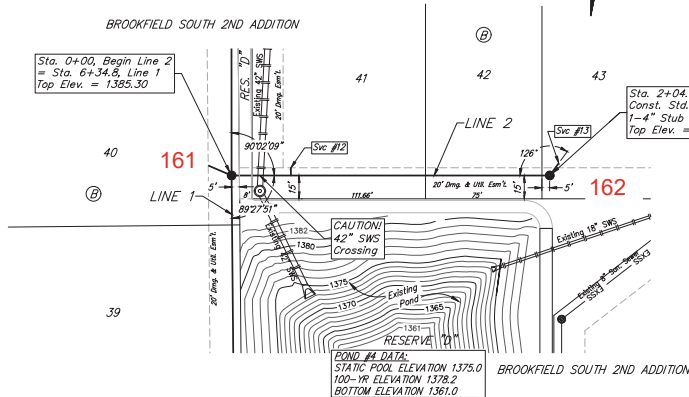
SEWER SERVICE TABLE

NUMBER	TYPE	LOCATION				FOR INFORMATION ONLY	
		LOT NO.	BLOCK NO.	LINE NO.	STATION/ DIRECTION	APPROXIMATE LENGTH 4" PIPE	VERTICAL HORIZONTAL
12	8" x 4" Tee	41	B	2	0+38.1/L1.	10.5'	5'
13	4" Stub	43	B	2	2+04.8/L1.	6.5'	10'

NOTE: The vertical portion of the riser shall be extended to 2' minimum above ground water elevation and 4' maximum below proposed ground elevation.



BROOKFIELD SOUTH 2ND ADDITION



BAUGHMAN COMPANY
 315 Ellis St.
 Wichita, KS 67211
 316-262-7271
 BaughmanCo.com

BROOKFIELD SOUTH 2ND ADDITION/Engineering/Phase 2/SS - 509

LINE 2 & LINE 3

SANITARY SEWER IMPROVEMENTS

PROJECT NUMBER: 468-2022-012078

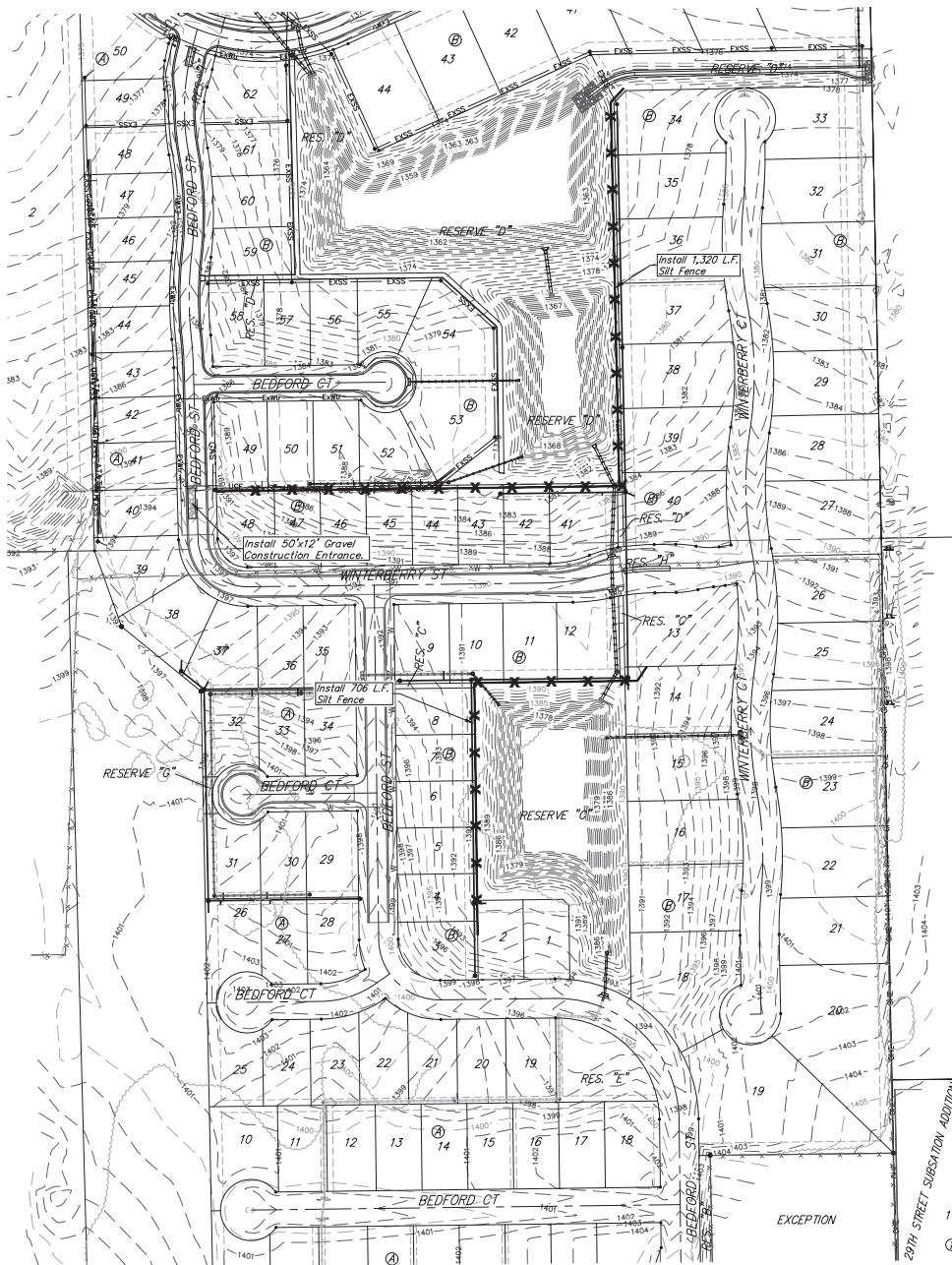
DATE: Jul. 1, 2025

SHEET **5** OF **17**

BENCHMARKS:
 RR spike in asphalt, SW Cor,
 N1/2, SW1/4, Sec. 34, TWP. 26-S,
 R-2-E.
 Elev. = 1400.59 NAVD

R.R. spike in E. face of power pole,
 174± N. of S. line, N1/2, SW1/4
 & 49± E. of N. line, SW1/4, SEC.
 34, TWP. 26-S, R-2-E.
 Elev. = 1398.64 NAVD88

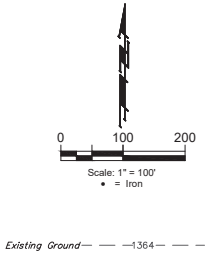
Brass Disc in top of curb adjacent
 to fire hydrant north of the NW
 Cor., Lot 49, Blk B, Brookfield
 South Addn.
 Elevation=1386.77 (NAVD88)



EROSION CONTROL MEASURE	INSTALL	MAINTAIN
CONSTRUCTION ENTRANCE (EA)	1	0
SILT FENCING (LF)	2,026	0

* ALL EXISTING BMPs INCLUDING CONSTRUCTION ENTRANCE, SEDIMENT BARRIERS, SILT FENCE, CUT-OFF TRENCH, AND EROSION CONTROL MAT SHALL BE MAINTAINED AND REPAIRED IF NECESSARY.

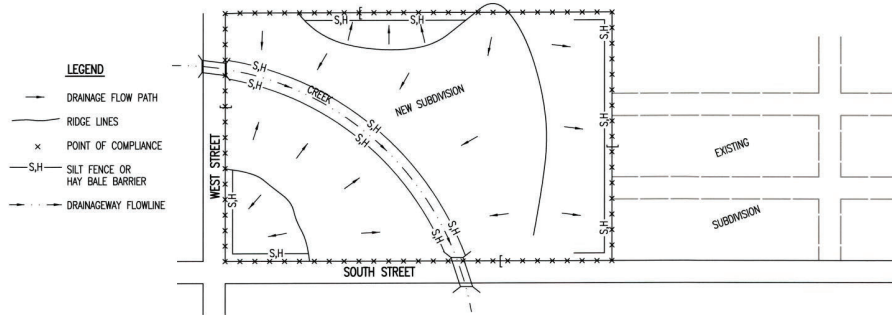
NOTES:
 1. Contractor shall make sure all erosion control is in place before project is accepted. This plan represents the minimum standard. Any additional erosion control measures shall be installed by the Contractor as needed.
 2. All areas disturbed during construction shall be seeded, mulched, and fertilized as per Cover Sheet General Notes.





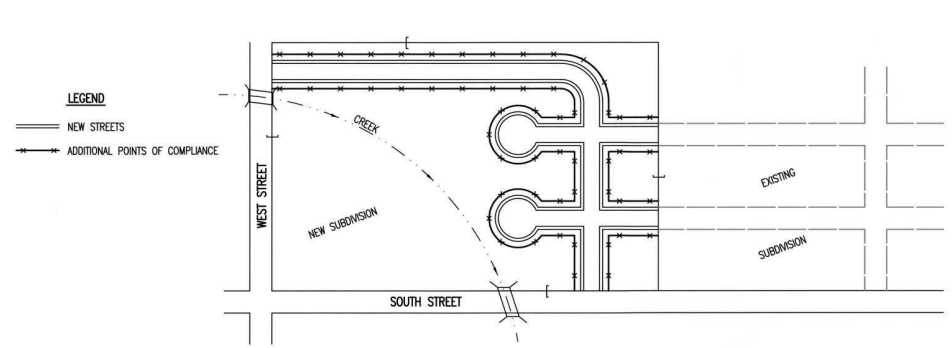
BAUGHMAN COMPANY
 315 Ellis St.
 Wichita, KS 67211
 316-262-7271
 BaughmanCo.com
 BROOKFIELD SOUTH
 2ND ADDITION - PHASE II
EROSION CONTROL
 SANITARY SEWER
 IMPROVEMENTS
 PROJECT NUMBER:
 468-2022-012078
 DESIGN: AEG DRAWN: JAK
 DATE: Jul. 1, 2025
 SHEET 5 OF 17
 File: C:\Project\Brookfield South 2nd Addition\Engineering\Phase 2\SS - 090

PHASE 1 – INITIAL EARTHWORK AND UTILITIES (EXCEPT STORM SEWER)



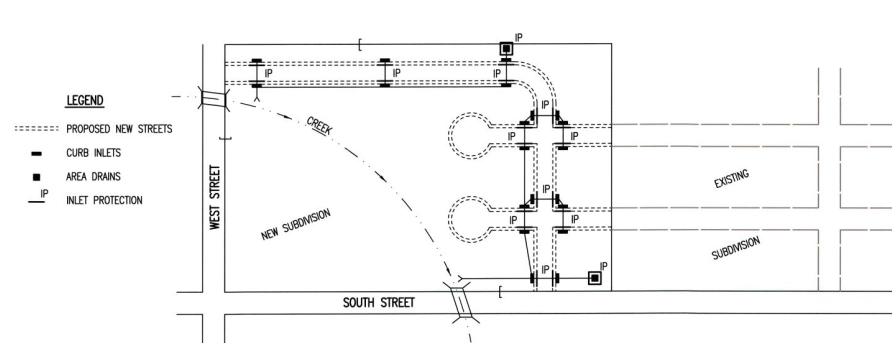
1. DURING THIS PHASE OF SUBDIVISION CONSTRUCTION, THE POINTS OF COMPLIANCE ARE THE PERIMETER BOUNDARIES AND ANY DRAINAGE WAYS OR STORM SEWERS DRAINING THROUGH OR FROM THE SITE. SHOULD LAKES BE CONSTRUCTED WITHIN THE SUBDIVISION THAT WILL DISCHARGE DURING STORMS, THEY ARE ALSO A POINT OF COMPLIANCE.
2. HAY BALES OR SILT FENCE MUST BE CONSTRUCTED ALONG THE PROPERTY LINE WHERE ON SITE WATER CAN DRAIN OFF THE PROPERTY. THESE EROSION CONTROL DEVICES WILL ALSO BE INSTALLED ALONG ANY DRAINAGE DITCH OR LAKE THAT CAN DISCHARGE.
3. SHOULD SILT OR SEDIMENT ENTER THE DITCHES OR STREETS ON THE ADJACENT BOUNDARY STREETS, APPROPRIATE EROSION CONTROL DEVICES WILL BE PLACED WITHIN THE SUBDIVISION TO PREVENT THIS.
4. ANY MUD TRACKED ONTO ADJACENT STREETS WILL BE REMOVED WITHIN 48 HOURS OR BY FRIDAY AT 6:00 PM, WHICHEVER IS EARLIER.
5. CONTRACTORS WORKING WITHIN THE SITE WILL NOT BE REQUIRED TO USE INDIVIDUAL EROSION CONTROL DEVICES AS LONG AS THOSE SPECIFIED ABOVE ARE IN PLACE AND EFFECTIVE. CONTRACTORS WORKING ON THE BOUNDARY LINE STREETS OR ON ADJACENT PROPERTIES TO EXTEND UTILITIES ARE EXPECTED TO USE EROSION CONTROL DEVICES AT THEIR WORK LOCATIONS, AS NEEDED.
6. UTILIZE STABILIZED CONSTRUCTION ENTRANCE AT ENTRANCE AND EXIT ONTO ANY EXISTING PUBLIC STREETS.
7. IF THE INITIAL EARTH WORK AND UTILITIES ARE DONE AS PART OF A PUBLIC IMPROVEMENT PROJECT, THESE EROSION CONTROL DEVICES WILL BE INSTALLED BY THE CONTRACTOR AS SPECIFIED IN THE INDIVIDUAL PROJECT CONTRACTS. THE CONTRACTOR WILL MAINTAIN THE DEVICES UNTIL COMPLETION OF THE CONTRACT, AT WHICH TIME THE DEVELOPER WILL ASSUME MAINTENANCE RESPONSIBILITIES. IF THESE CONTRACTS ARE NOT PUBLIC IMPROVEMENT PROJECTS, THE DEVELOPER WILL BE RESPONSIBLE FOR INSTALLING AND MAINTAINING THESE DEVICES.
8. WITHIN 14 DAYS OF COMPLETION OF EARTHWORK ACTIVITIES IN ANY GIVEN AREA, THAT AREA SHALL BE TEMPORARILY OR PERMANENTLY SEEDED AND MULCHED.

PHASE 3 – STREET CONSTRUCTION



1. DURING THIS PHASE OF SUBDIVISION CONSTRUCTION, NEW STREETS ARE INSTALLED. ALL EROSION CONTROL DEVICES INSTALLED DURING PHASE 1 AND 2 MUST STILL BE MAINTAINED. THE POINT OF COMPLIANCE NOW SHIFTS TO THE BACK OF CURB ALONG EACH STREET.
2. CURB OPENING - INLET PROTECTION:
 - A. SWAMP AREAS – INLET PROTECTION SHALL BE PROVIDED WHEN STREET SUBGRADE WORK IS COMPLETED.
 - B. NON-SWAMP LOCATIONS – PROVIDE INLET PROTECTION AS SOON AS BASE COURSE ASPHALT IS INSTALLED, BEFORE THE SURFACE COURSE LIFT.
3. EROSION CONTROL DEVICES WILL BE REQUIRED BACK OF CURB WHEREVER WATER CAN FLOW OVER THE CURB AND THE CURB HAS BEEN BACKFILLED TO WITHIN 3" OR LESS OF THE TOP OF CURB (SEE CURB BACKFILL DETAIL). FOR CURBS NOT YET ENTIRELY BACKFILLED (3" OR MORE BELOW TOP OF CURB), ADDITIONAL DEVICES WILL BE REQUIRED AT POINTS WHERE WATER BREAKS OVER CURB WHICH COULD RESULT IN THE PLACEMENT OF SEDIMENT IN THE GUTTER.
4. SEE DETAIL SHEET FOR BACK OF CURB PROTECTION.
5. THE BACK OF CURB PROTECTION SPECIFIED ON THIS PLAN MAY HAVE TO BE SUPPLEMENTED WITH HAY BALE OR SILT FENCE EROSION CONTROL DEVICES AT LOCATIONS WHERE CONCENTRATED FLOW RESULTS IN SEDIMENT BEING CARRIED OVER THE EXCELSIOR MATS.
6. THE STREET CONTRACTOR WILL BE RESPONSIBLE FOR INSTALLING BACK OF CURB EROSION CONTROL DEVICES.
7. THE INDIVIDUAL LOT OWNERS WILL BE RESPONSIBLE FOR MAINTAINING THE BACK OF CURB EROSION CONTROL DEVICES IN FRONT OF THEIR LOTS UNTIL SUCH TIME AS ADJACENT DISTURBED EARTH IS STABILIZED WITH GRASS OR SOD.

PHASE 2 – INSTALLATION OF STORM SEWER

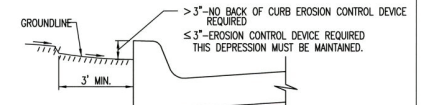


1. DURING THIS PHASE OF SUBDIVISION DEVELOPMENT, ALL EROSION CONTROL DEVICES REQUIRED IN PHASE 1 SHALL REMAIN IN PLACE AND BE MAINTAINED.
2. AS NEW STORM SEWERS, WITH INLETS, ARE INSTALLED, THE STORM SEWERS MUST NOW BE PROTECTED SO ALL NEW INLETS BECOME POINTS OF COMPLIANCE.
3. AREA DRAINS – AS SOON AS WATER CAN FLOW INTO THESE DRAINS, HAY BALE OR SILT FENCE PROTECTION WILL BE INSTALLED AROUND THEM.
4. CURB OPENING INLETS – AS SOON AS WATER CAN FLOW INTO THESE DRAINS, INLET PROTECTION DEVICES MUST BE INSTALLED. IF WATER CANNOT FLOW INTO CURB INLETS UNTIL STREET CONSTRUCTION IS COMPLETE, THEN STREET CONTRACTOR WILL INSTALL INLET PROTECTION. SEE PHASE 3 – STREET CONSTRUCTION.
5. THE STORM SEWER CONTRACTOR WILL BE RESPONSIBLE FOR INSTALLING THESE DEVICES.
6. THE SUBDIVISION DEVELOPER WILL MAINTAIN THESE EROSION CONTROL DEVICES ONCE INSTALLED.
7. ALL DISTURBED GROUND WILL BE FINAL GRADED AND TEMPORARILY OR PERMANENTLY SEEDED WITHIN 14 DAYS IF COMPLETION OF WORK IN ANY GIVEN PART OF THE SUBDIVISION.
8. ONCE ALL DISTURBED GROUND DRAINING TO AN INLET HAS BEEN RESTABILIZED WITH GRASS OR SOD, THE SUBDIVISION DEVELOPER WILL BE RESPONSIBLE FOR PERMANENTLY REMOVING THE INLET PROTECTION.

GENERAL NOTES

1. THE INTENT OF ALL EROSION CONTROL DEVICES IS TO PREVENT ERODED SOIL FROM ENTERING DITCHES, STORM SEWERS, LAKES, STREETS OR ANY OTHER DRAINAGE FEATURE.
2. THIS SHEET IS INTENDED TO PROVIDE GUIDELINES AS TO WHAT TYPE OF EROSION CONTROL DEVICES WILL BE INSTALLED DURING THE CONSTRUCTION PROCESS. CONTRACTORS ARE EXPECTED TO BID PROJECTS ACCORDINGLY.
3. EROSION CONTROL DEVICES SHALL BE MAINTAINED DURING THE CONSTRUCTION PROCESS TO REMAIN EFFECTIVE. MAINTENANCE SHALL BE AS INDICATED ON SOIL EROSION BMP'S DETAIL SHEETS.
4. PERSONS DESTROYING EROSION CONTROL DEVICES SHALL BE RESPONSIBLE FOR IMMEDIATELY REPAIRING THEM OR INSTALLING SUITABLE REPLACEMENT DEVICES.
5. THE DEVELOPMENT OF ANY SUBDIVISION THAT DISTURBS 1 ACRE OR MORE WILL REQUIRE A FEDERAL/STATE NPDES STORMWATER PERMIT. THE PREPARATION OF A STORMWATER POLLUTION PREVENTION PLAN IS REQUIRED. EROSION CONTROL DEVICES ARE REQUIRED. THE DETAILS SHOWN ON THIS SHEET ARE THE MINIMUM STANDARDS TO BE SHOWN ON POLLUTION PREVENTION PLANS.
6. FOR SUBDIVISIONS SMALLER THAN 1 ACRE, SOIL EROSION DEVICES ARE REQUIRED. ALSO, DEVELOPERS AND CONTRACTORS ARE ENCOURAGED TO DEVELOP POLLUTION PREVENTION PLANS FOR EACH PROJECT PRIOR TO CONSTRUCTION.
7. FAILURE TO USE AND MAINTAIN SOIL EROSION DEVICES IS A VIOLATION OF SECTION 16.32 OF THE CITY CODE AND WILL SUBJECT THE SUBDIVISION DEVELOPER AND CONTRACTORS TO THE PENALTIES PROVIDED THEREIN.
8. THE APPLICATION OF EROSION CONTROL DEVICES SHOWN ON THIS SHEET IS FOR SITUATIONS NORMALLY ENCOUNTERED. FROM TIME TO TIME, SITUATIONS WILL ARISE THAT MAY REQUIRE DEVICES OTHER THAN THAT SHOWN. EROSION CONTROL DEVICES, OTHER THAN THOSE SHOWN, MAY BE UTILIZED SO LONG AS THEY ARE EFFECTIVE AND MAINTAINED.
9. A STABILIZED EARTH SURFACE IS DEFINED AS ONE THAT IS HARD SURFACED WITH CONCRETE, ASPHALT, OR THE LIKE, OR ONE ON WHICH 70% OF THE GRASS HAS GERMINATED ON THE ENTIRE SURFACE.

SEE DETAIL SHEET FOR
BACK OF CURB PROTECTION DETAIL



**CURB BACKFILL DETAIL
(STREET CONSTRUCTION ONLY)**

THIS IS A TEMPORARY MEASURE ONLY, WHEN APPROVED BY THE PROJECT ENGINEER. THE DIRT GRADE BEHIND THE CURB SHALL BE BROUGHT TO THE TOP OF CURB, WITH TEMPORARY EROSION CONTROL MAT OR PERMANENT VEGETATION PLACED, PRIOR TO THE COMPLETION OF ALL PROJECTS.

REVISION DATE: MAY 2013

CITY OF WICHITA
PUBLIC WORKS & UTILITIES
ENGINEERING DIVISION

**SUBDIVISION
DEVELOPMENT
PROCESS**

CITY ENGINEER
GARY JANZEN, P.E.

PROJECT NUMBER DCA NUMBER DATE

CITY ENGINEER'S OFFICE
CITY HALL - SEVENTH FLOOR
455 NORTH MAIN STREET
WICHITA, KANSAS 67202-1620
(316) 268-4501

SHEET
11 of 17