

GENERAL NOTES:

- Contractor will be required to provide notice to utility companies a minimum of seventy-two (72) hours prior to any excavation, as follows:
 Kansas One-Call 687-2470
 The Contractor must notify the following in case of an emergency:
 Cox Communications 262-4270
 Kansas Gas Service 1-888-492-4950
 Energy 383-8650
 Block Hills 1-800-303-0357
 AT&T 268-2245
 City of Wichita Water Dept. 268-4563
 City of Wichita Sewer Maint. 268-4024
 City of Wichita Storm Sewer Maint. 268-4090
 City of Wichita Traffic Maint. 268-4034
 Conoco Phillips Pipeline Co. 1-877-267-2290
 Southern Star Pipeline Co. 529-6600
 Kinder-Morgan Pipeline Co. 1-888-844-3608
- Utility service lines, poles, valve boxes, meters, and etcetera are to be adjusted as necessary by others prior to construction unless the plans specifically call for their adjustment by the Contractor or unless the plans specifically identify a utility to be adjusted by its owner during construction. Existing utilities and their location, as shown on the plans represent the best information obtainable for design. The Contractor will be required to work around existing utilities within the right-of-way which do not conflict with proposed construction.
- Rubble from the removal of miscellaneous structures and excess excavation which is to be wasted shall be disposed of on sites to be provided by the Contractor. These sites shall be approved by the Engineer as to suitability, appearance and site location. Locations, in the opinion of the Engineer, that will leave an unsightly appearance will not be approved. All disposal sites must be approved by the Kansas Department of Health and Environment. Material either stockpiled or disposed of in a flood plain would require a Kansas State Board of Agriculture permit. Any material dumped in waters of the United States or wetlands is subject to U.S. Corps of Engineers permitting requirements. Any material buried or stockpiled beyond approved construction limits would require additional archaeological investigations unless buried in a previously approved borrow location.
- Trees and shrubs in public right-of-way which are in direct conflict with proposed new construction shall be removed by the Contractor with the Engineer's approval. Trees and shrubs which are not in direct conflict with proposed new construction shall be saved and protected from damage.
- The Contractor shall give all property owners and/or tenants of developed property adjoining the construction of this project a minimum of ten (10) days notice prior to start of construction.
- The Contractor shall be responsible for preserving property irons. The Contractor will be required to re-establish any property irons which are damaged or destroyed by his construction operations. Such irons shall be re-established by a licensed land surveyor in accordance with state laws.
- All existing and proposed erosion control measures including silt fencing, erosion control mat, straw bales, silt barriers, and silt and sand entrance shall be maintained throughout construction by the contractor and until project is accepted by the City of Wichita. The on-site engineer shall complete weekly reports on the status of erosion control measures. The contractor shall be required to comply with maintenance and/or replacement of erosion control measures as determined by the on-site engineer until project is accepted by City of Wichita. Maintenance and/or replacement of erosion control measures to be paid by L.S. bid item "Maintain Existing BMP's".
- All excess excavation shall remain on-site and shall be stockpiled or spread at a location determined by the Engineer.
- The Contractor shall be responsible for maintaining continuous flow of sewage through construction. Contractor's proposed method for maintaining sewage flow shall be approved by the Engineer. Cost of maintaining flow of sewage through construction will not be paid for directly and this cost shall be considered as subsidiary to the other pay items of work.
- All areas within Rock Rd. R/W disturbed during construction shall be seeded, mulched, and fertilized as follows:
 SEED -- Kansas Premium Fescue Blend, 8#/1000 Sq. Ft.
 Rye grass (PLS), 3#/1000 Sq. Ft. and
 FERTILIZER -- 12-04-12 Ratio at 45 Lbs./Ac.
 MULCH -- 2 Tons Prairie Hay / Acre
 All other disturbed areas are to be seeded as follows:
 SEED -- Rye grass (PLS)--5#/1000 Sq. Ft.
 All costs associated with seeding including mobilization, preparation of ground, seeding, fertilizing, mulching, etc. shall be included in the L.S. bid item "Seeding".

- Trees and shrubs in the work area which are in direct conflict with proposed new construction shall be removed by the Contractor ONLY with the Developer or Baughman Company approval. Trees and shrubs which are not in direct conflict with proposed new construction shall be saved and protected from damage. If trimming is necessary, a chainsaw shall be used. Breaking limbs with equipment will not be allowed. An on-site pre-construction meeting will occur prior to any construction to discuss tree removal, tree protection, and tree trimming.
- The Developer for this project is Jay Russell, P.E. Box 75332, Wichita, KS 67272. PH# (316) 990-2105 Email j@jussellco.com

Engineer: Ever Villalobos
Inspector: Levi Wheeler
Contractor: Duling Construction
Release Date: 04-29-2026

SANITARY SEWER IMPROVEMENTS to serve **BETZEN ADDITION - PHASE I**

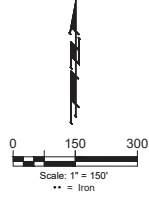
CITY OF WICHITA, KANSAS

Paul Gunzlemen, P.E. City Engineer
 Project Number: 468-2025-010844
 Org Code Number: **47274725**
 Munis Number: **E5124**

6043C
WIS-52

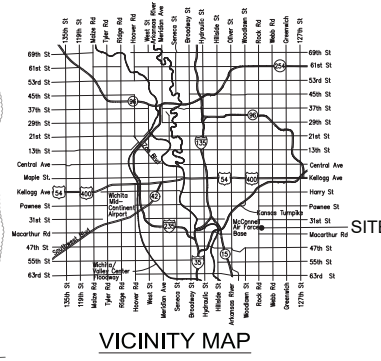
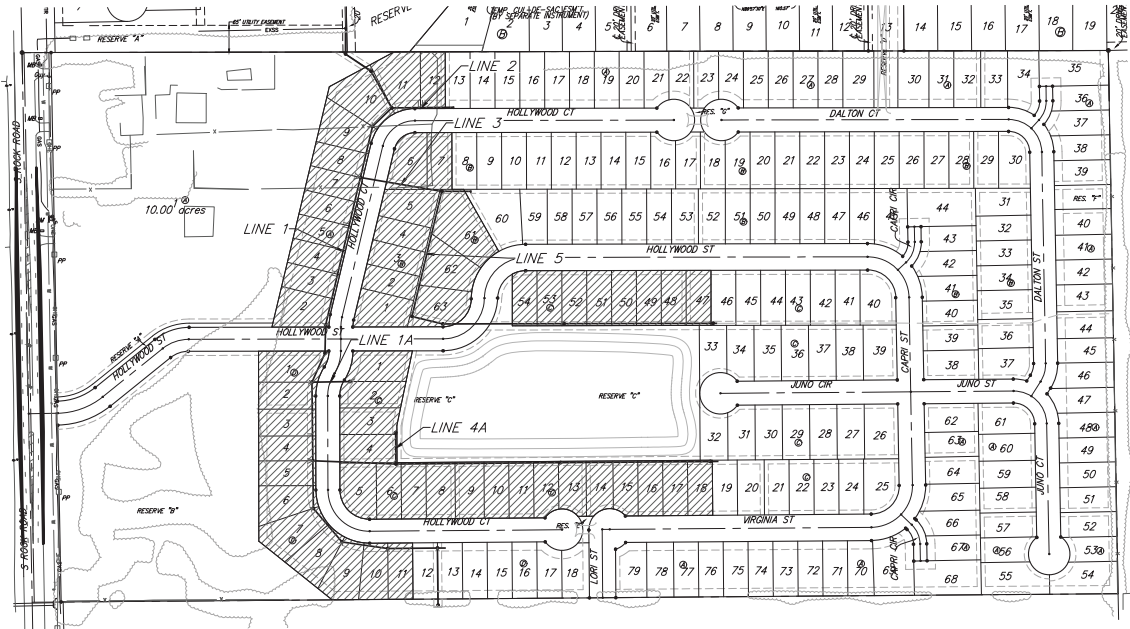
SHEET INDEX

Title Sheet	1
Line 1	2-5
Line 2	6
Line 3	7
Line 4	8-9
Line 5	10-11
Line 1A & Line 4A	12
Erosion Control Plan	13
Erosion Control BMP Details	14-18
Standard Manhole Detail	19
Frame & Cover Detail	20
Vertical Riser Detail	21
Cleanout Riser Assembly Detail	22
Coordinate Sheet	23
Copy of Plat	24-26



BENCHMARKS

- CITY OF WICHITA BENCHMARK DISK AT SOUTH END OF HUBBARD ON THE SW COR. OF R.C.S.C., WEST SIDE OF ROCK ROAD, 706' NORTH-NORTHWEST OF THE NORTHWEST CORNER OF LOT 44, BLOCK A, ROCKY FORD ADDITION. ELEV. = 1368.14 NAVD88
- SQUARE CUT ON TOP OF CURB NW CORNER OF LOT 14, BLOCK B, R.F. ADDITION. ELEV. = 1388.18 NAVD88
- SQUARE CUT ON TOP OF CURB NW CORNER OF LOT 7, BLOCK C, R.F. ADDITION. ELEV. = 1387.26 NAVD88
- SQUARE CUT ON TOP OF CURB NW CORNER OF LOT 47, BLOCK C, R.F. ADDITION. ELEV. = 1387.90 NAVD88



APPROVED AS NOTED
 BY WICHITA PUBLIC WORKS ENGINEERING

Engineering _____

An approved copy of these plans signed by City staff are required on-site.

BENEFIT DISTRICT

August 5, 2025

BAUGHMAN COMPANY
 315 Ellis St. Wichita, KS 67211 316-262-7271
 BaughmanCo.com



E:\Projects\Bachman Addition_22-05-2025\Engineering\Drawings\SS PLAN1.dwg

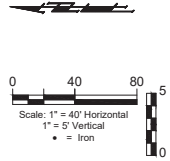
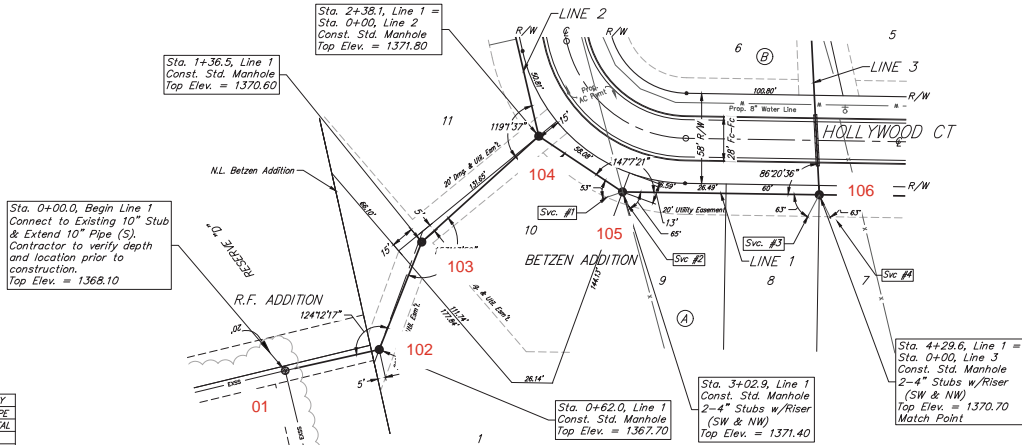
BENCHMARKS:

CITY OF WICHITA BENCHMARK DISK AT SOUTH END OF HUBBARD ON THE SW COR. OF R.C.B.C., WEST SIDE OF ROCK ROAD, 706 NORTH-NORTHWEST OF THE NORTHWEST CORNER OF LOT 44, BLOCK A, ROCKY FORD ADDITION.
ELEV. = 1368.14 NAVD88

SQUARE CUT ON TOP OF CURB NW CORNER OF LOT 14, BLOCK B, R.F. ADDITION.
ELEV. = 1368.18 NAVD88

SQUARE CUT ON TOP OF CURB NW CORNER OF LOT 7, BLOCK C, R.F. ADDITION.
ELEV. = 1367.26 NAVD88

SQUARE CUT ON TOP OF CURB NW CORNER OF LOT 42, BLOCK C, R.F. ADDITION.
ELEV. = 1367.90 NAVD88



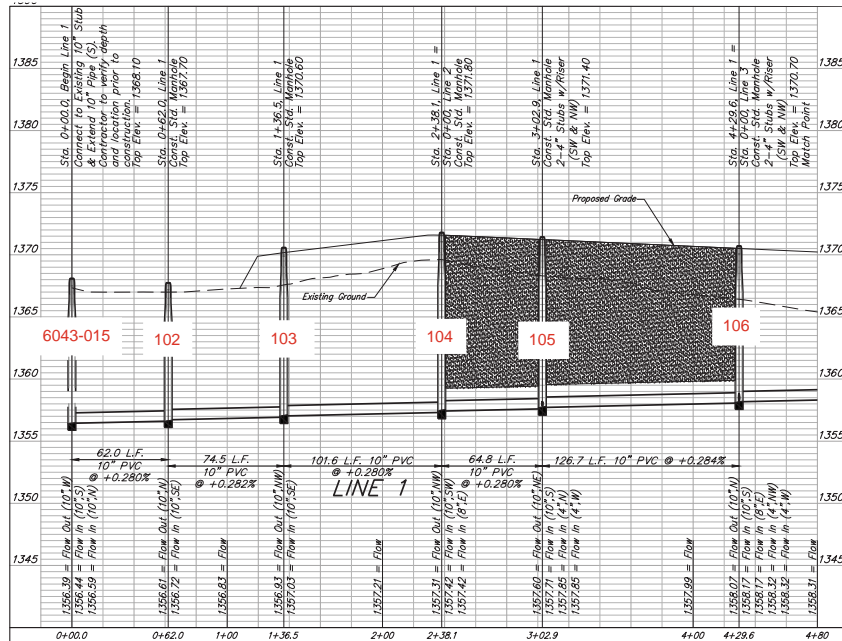
NOTE: All trench and manhole excavation areas from Sta. 2+38.1 to Sta. 15+83.3, Line 1, excluding 33.0 L.F. Flowable Fill, shall be backfilled with sand. The sand backfill shall be water-jetted and vibrated during backfilling. All costs shall be paid for as L.F. Fill, Sand (Flushed & Vibrated).

NOTE: 2-foot minimum vertical separation between water service lines and all sanitary sewer lines shall be maintained at crossings. 10-foot horizontal separation between water service lines and all sanitary sewer lines and manholes shall be maintained. Distances are to be measured from edge-to-edge, at the closest point.

SEWER SERVICE TABLE

NUMBER	TYPE	LOCATION			FOR INFORMATION ONLY	
		LOT NO.	BLOCK NO.	LINE NO.	STATION/DIRECTION	APPROX. LENGTH 4" PIPE
1	4" Stub	10	A	1	3+02.90/RL	9.2
2	4" Stub	9	A	1	3+02.90/RL	9.2
3	4" Stub	8	A	1	4+28.60/RL	8.0
4	4" Stub	7	A	1	4+28.60/RL	7.9

NOTE: Vertical Riser Pipe shall be extended to 2' minimum above ground water elevation and 4' maximum below proposed ground elevation.



BAUGHMAN COMPANY

315 Ellis St.
Wichita, KS 67211
316-262-7271
BaughmanCo.com

BETZEN ADDITION
PHASE 1

LINE 1

SANITARY SEWER
IMPROVEMENTS

PROJECT NUMBER:
XXX

DESIGN: AEG DRAWN: AJV

DATE: August 5, 2025

SHEET 02 OF 26

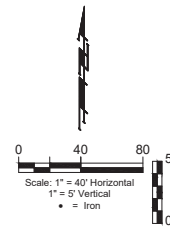
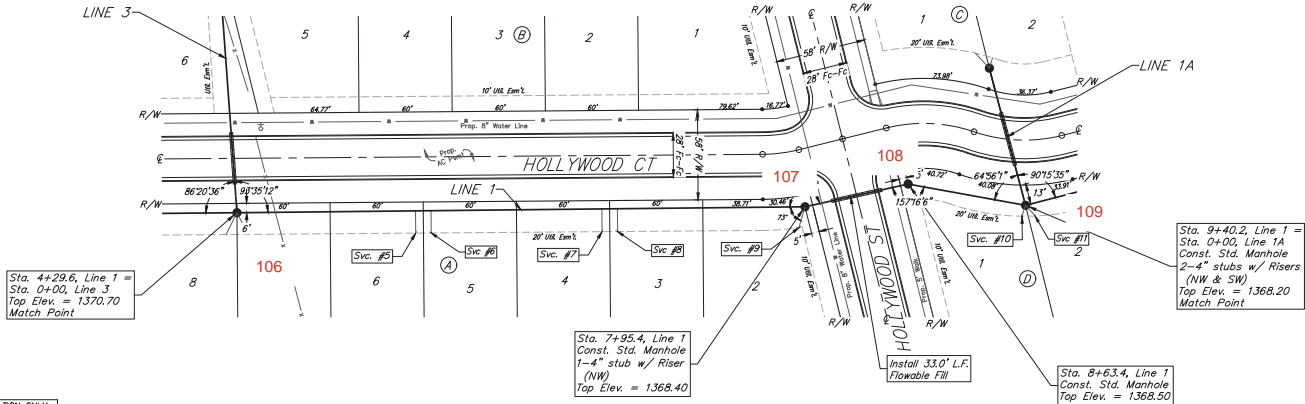
BENCHMARKS:

CITY OF WICHITA BENCHMARK DISK AT SOUTH END OF HUBGUARD ON THE SW COR. OF R.C.B.C., WEST SIDE OF ROCK ROAD, 706 NORTH-NORTHWEST OF THE NORTHWEST CORNER OF LOT 44, BLOCK A, ROCKY FORD ADDITION. ELEV. = 1368.14 NAVD88

SQUARE CUT ON TOP OF CURB NW CORNER OF LOT 14, BLOCK B, R.F. ADDITION. ELEV. = 1368.18 NAVD88

SQUARE CUT ON TOP OF CURB NW CORNER OF LOT 7, BLOCK C, R.F. ADDITION. ELEV. = 1367.26 NAVD88

SQUARE CUT ON TOP OF CURB NW CORNER OF LOT 47, BLOCK C, R.F. ADDITION. ELEV. = 1367.90 NAVD88



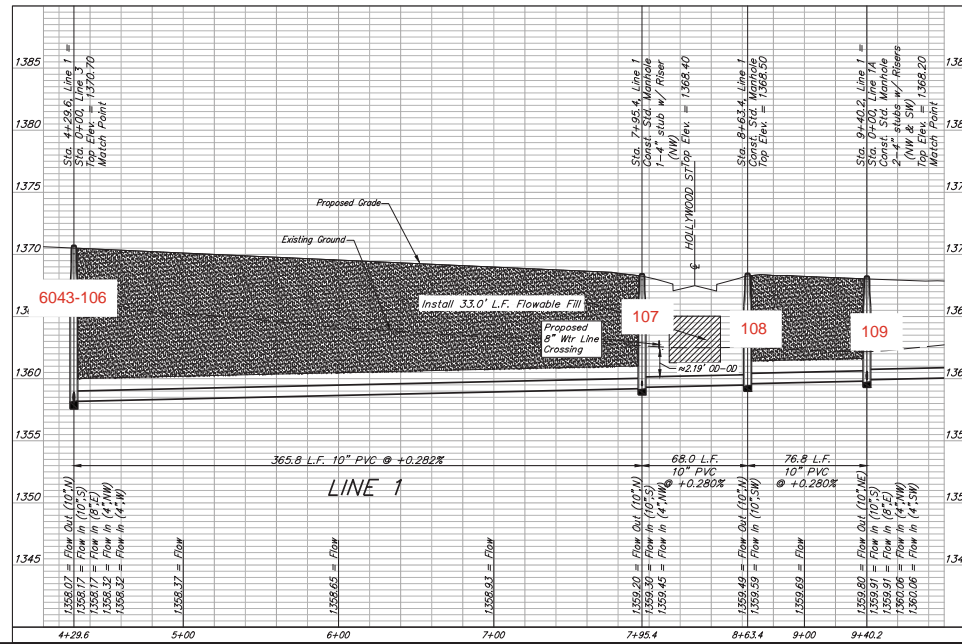
SEWER SERVICE TABLE

NUMBER	TYPE	LOCATION			FOR INFORMATION ONLY	
		LOT NO.	BLOCK NO.	LINE NO.	STATION/DIRECTION	APPROX. LENGTH 4" PIPE
5	8" x 4" Tee	6	A	1	5+44.60/R.L.	6.1 14.3
6	8" x 4" Tee	5	A	1	5+54.60/R.L.	6.0 14.3
7	8" x 4" Tee	4	A	1	6+46.60/R.L.	5.1 14.6
8	8" x 4" Tee	3	A	1	6+74.60/R.L.	4.9 14.7
9	4" Stub	2	A	1	7+95.40/R.L.	4.4 13.8
10	4" Stub	1	D	1	9+40.20/R.L.	3.9 7.4
11	4" Stub	2	D	1	9+40.20/R.L.	3.8 9.3

NOTE: Vertical Riser Pipe shall be extended to 2' minimum above ground water elevation and 4' maximum below proposed ground elevation.

NOTE: All trench and manhole excavation areas from Sta. 2+38.1 to Sta. 15+83.3, Line 1, excluding 33.0 L.F. Flowable Fill, shall be backfilled with sand. The sand backfill shall be water-jetted and vibrated during backfilling. All costs shall be paid for as L.F. "Fill, Sand (Flushed & Vibrated)".

NOTE: 2-foot minimum vertical separation between water service lines and all sanitary sewer lines shall be maintained at crossings. 10-foot horizontal separation between water service lines and all sanitary sewer lines and manholes shall be maintained. Distances are to be measured from edge-to-edge, at the closest point.



BAUGHMAN COMPANY

315 Ellis St.
Wichita, KS 67211
316-262-7271
BaughmanCo.com

BETZEN ADDITION
PHASE 1

LINE 1

SANITARY SEWER IMPROVEMENTS

PROJECT NUMBER:
XXX

DESIGN: AEG DRAWN: AJV

DATE: August 5, 2025

SHEET OF
03 26

P:\E:\Project\Betzzen Addition\22-06-8006\Engineering\Phase 1\SE PLANS.dwg

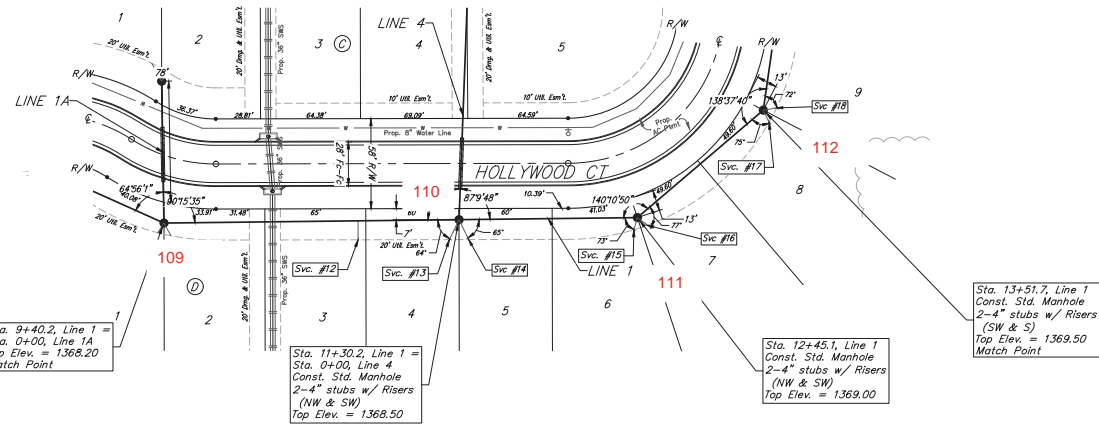
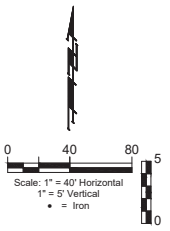
BENCHMARKS:

CITY OF WICHITA BENCHMARK
DISK AT SOUTH END OF
HUSGARD ON THE SW COR.
OF R.C.B.C., WEST SIDE OF
ROCK ROAD, 706
NORTH-NORTHWEST OF THE
NORTHWEST CORNER OF LOT
44, BLOCK A, ROCKY FORD
ADDITION.
ELEV. = 1368.14 NAVD88

SQUARE CUT ON TOP OF CURB
NW CORNER OF LOT 14,
BLOCK B, R.F. ADDITION.
ELEV. = 1368.18 NAVD88

SQUARE CUT ON TOP OF CURB
NW CORNER OF LOT 7, BLOCK
C, R.F. ADDITION.
ELEV. = 1367.26 NAVD88

SQUARE CUT ON TOP OF CURB
NW CORNER OF LOT 47,
BLOCK C, R.F. ADDITION.
ELEV. = 1367.90 NAVD88



SEWER SERVICE TABLE

NUMBER	TYPE	LOCATION		FOR INFORMATION ONLY		
		LOT NO.	LINE NO.	STATION / DIRECTION	APPROX. LENGTH 4" PIPE	
					VERTICAL	HORIZONTAL
12	8"x4" Tee	3	D	10+65.10/RL	2.6	12.2
13	4" Stub	4	D	11+30.20/RL	3.3	14.2
14	4" Stub	5	D	11+60.20/RL	3.5	14.2
15	4" Stub	6	D	12+45.10/RL	3.5	8.1
16	4" Stub	7	D	12+45.10/RL	3.5	8.2
17	4" Stub	8	D	13+51.70/RL	3.6	8.6
18	4" Stub	9	D	13+51.70/RL	3.6	8.6

NOTE: Vertical Riser Pipe shall be extended to 2' minimum above ground water elevation and 4' maximum below proposed ground elevation.

Sta. 9+40.2, Line 1 =
Sta. 0+00, Line 1A
Top Elev. = 1368.20
Match Point

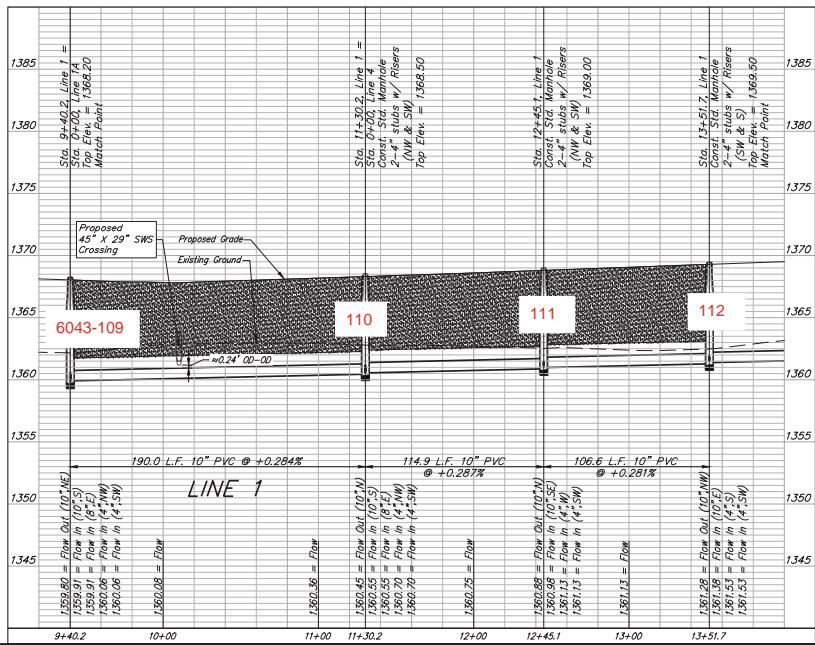
Sta. 11+50.2, Line 1 =
Sta. 0+00, Line 4
Const. Std. Manhole
2-4" stubs w/ Risers
(NW & SW)
Top Elev. = 1368.50

Sta. 12+45.1, Line 1
Const. Std. Manhole
2-4" stubs w/ Risers
(NW & SW)
Top Elev. = 1369.00

Sta. 13+51.7, Line 1
Const. Std. Manhole
2-4" stubs w/ Risers
(SW & S)
Top Elev. = 1369.50
Match Point

NOTE: All trench and manhole excavation areas from Sta. 2+38.1 to Sta. 15+83.3, Line 1, excluding 33.0 L.F. Flowable Fill, shall be backfilled with sand. The sand backfill shall be water-jetted and vibrated during backfilling. All costs shall be paid for as L.F. "Fill, Sand (Flushed & Vibrated)".

NOTE: 2-foot minimum vertical separation between water service lines and all sanitary sewer lines shall be maintained at crossings. 10-foot horizontal separation between water service lines and all sanitary sewer lines and manholes shall be maintained. Distances are to be measured from edge-to-edge, at the closest point.



BAUGHMAN COMPANY

315 Ellis St.
Wichita, KS 67211
316-262-7271
BaughmanCo.com

BETZEN ADDITION
PHASE 1

LINE 1

SANITARY SEWER IMPROVEMENTS

PROJECT NUMBER:
XXX

DESIGN: AEG DRAWN: AJV
DATE: August 5, 2025
SHEET OF
04 26

P:\E:\Projects\Betzzen Addition_22-06-8000\Engineering\Phase 1\SE PLANS.dwg

BENCHMARKS:

CITY OF WICHITA BENCHMARK DISK AT SOUTH END OF HUBBARD ON THE SW COR. OF R.C.B.C., WEST SIDE OF ROCK ROAD, 706 NORTH-NORTHWEST OF THE NORTHWEST CORNER OF LOT 44, BLOCK A, ROCKY FORD ADDITION.
ELEV. = 1368.14 NAVD88

SQUARE CUT ON TOP OF CURB NW CORNER OF LOT 14, BLOCK B, R.F. ADDITION.
ELEV. = 1368.18 NAVD88

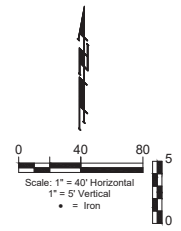
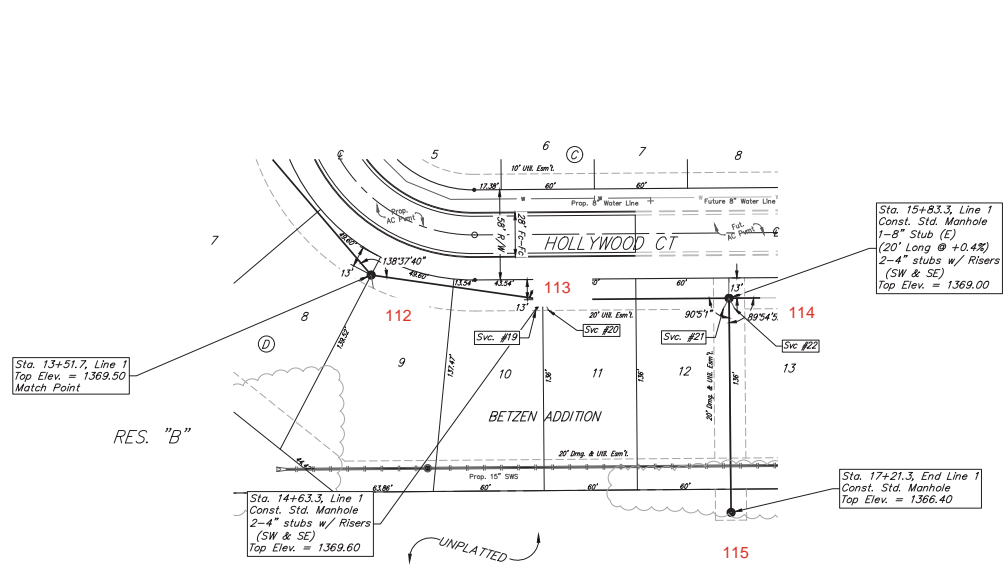
SQUARE CUT ON TOP OF CURB NW CORNER OF LOT 7, BLOCK C, R.F. ADDITION.
ELEV. = 1367.26 NAVD88

SQUARE CUT ON TOP OF CURB NW CORNER OF LOT 47, BLOCK C, R.F. ADDITION.
ELEV. = 1367.90 NAVD88

SEWER SERVICE TABLE

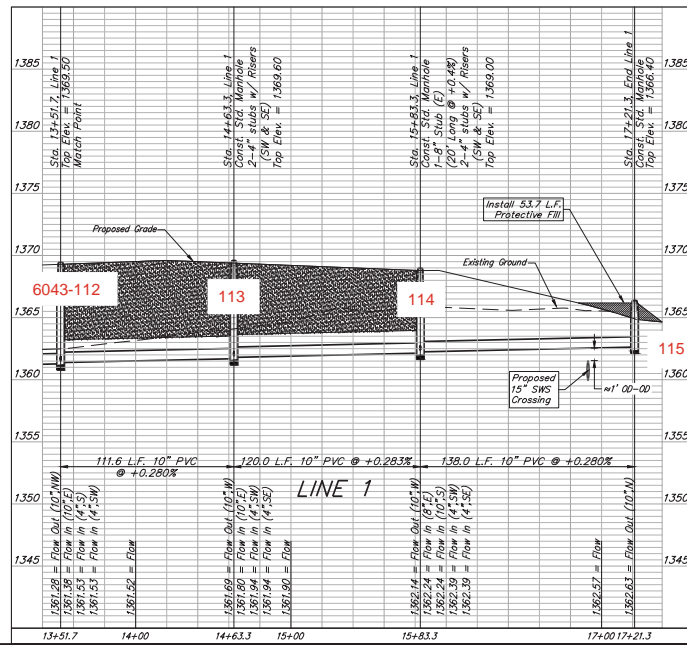
NUMBER	TYPE	LOCATION			FOR INFORMATION ONLY	
		LOT NO.	BLOCK NO.	LINE NO. / DIRECTION	STATION / UNITS	APPROX. LENGTH 4" PIPE VERTICAL HORIZONTAL
19	4" Stub	10	D	1	14+63.30/RL	3.3 8.4
20	4" Stub	11	D	1	14+63.30/RL	3.3 8.0
21	4" Stub	12	D	1	15+83.30/RL	2.2 8.0
22	4" Stub	13	D	1	15+83.30/RL	2.2 8.0

NOTE: Vertical Riser Pipe shall be extended to 2' minimum above ground water elevation and 4' maximum below proposed ground elevation.



NOTE: All trench and manhole excavation areas from Sta. 2+38.1 to Sta. 15+83.3, Line 1, excluding 33.0 L.F. flowable fill, shall be backfilled with sand. The sand backfill shall be water-jetted and vibrated during backfilling. All costs shall be paid for as L.F. Fill, Sand (Flushed & Vibrated).

NOTE: 2-foot minimum vertical separation between water service lines and all sanitary sewer lines shall be maintained at crossings. 10-foot horizontal separation between water service lines and all sanitary sewer lines and manholes shall be maintained. Distances are to be measured from edge-to-edge, at the closest point.



BAUGHMAN COMPANY
315 Ellis St.
Wichita, KS 67211
316-262-7271
BaughmanCo.com

BETZEN ADDITION
PHASE 1

LINE 1

SANITARY SEWER
IMPROVEMENTS

PROJECT NUMBER:
XXX

DESIGN: AEG DRAWN: AJV
DATE: August 5, 2025
SHEET OF
05 26

BENCHMARKS:

CITY OF WICHITA BENCHMARK
DISK AT SOUTH END OF
HUBGUARD ON THE SW COR.
OF R.C.B.C., WEST SIDE OF
ROCK ROAD, 706'
NORTH-NORTHWEST OF THE
NORTHWEST CORNER OF LOT
44, BLOCK A, ROCKY FORD
ADDITION.
ELEV. = 1368.14 NAVD88

SQUARE CUT ON TOP OF CURB
NW CORNER OF LOT 14,
BLOCK B, R.F. ADDITION.
ELEV. = 1368.18 NAVD88

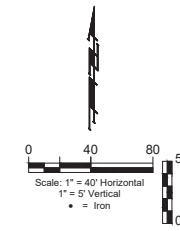
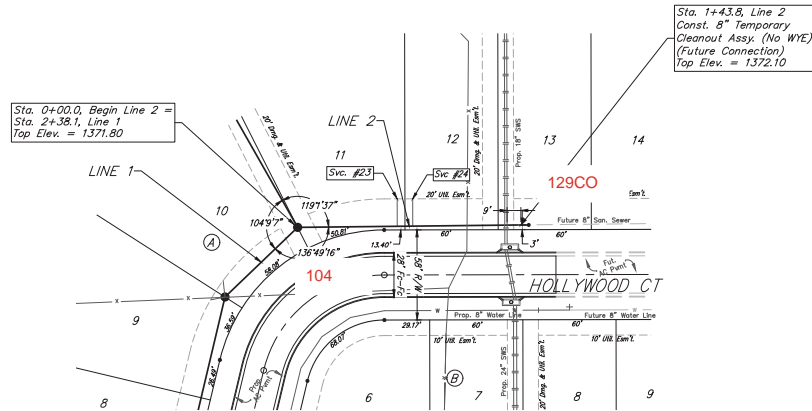
SQUARE CUT ON TOP OF CURB
NW CORNER OF LOT 7, BLOCK
C, R.F. ADDITION.
ELEV. = 1367.26 NAVD88

SQUARE CUT ON TOP OF CURB
NW CORNER OF LOT 47,
BLOCK C, R.F. ADDITION.
ELEV. = 1367.90 NAVD88

SEWER SERVICE TABLE

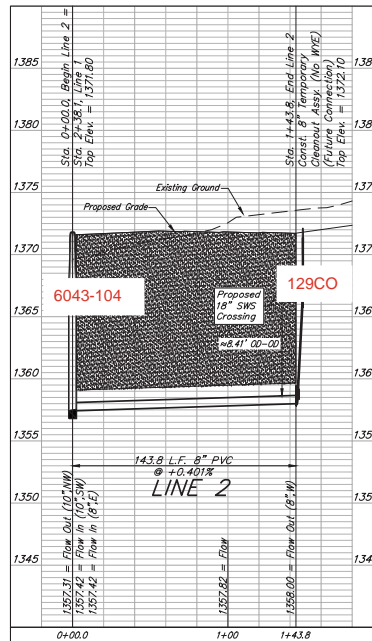
NUMBER	TYPE	LOCATION			FOR INFORMATION ONLY	
		LOT NO.	BLOCK NO.	LINE NO.	STATION/DIRECTION	APPROX. LENGTH 4" PIPE VERTICAL HORIZONTAL
23	4" Stub	11	A	2	0+64.30/LI.	9.9 17.7
24	4" Stub	12	A	2	0+74.30/LI.	10.1 17.6

NOTE: Vertical Riser Pipe shall be extended to 2' minimum above ground water elevation and 4' maximum below proposed ground elevation.



NOTE: All trench and manhole excavation areas from Sta. 0+00.0 to Sta. 1+43.8, Line 2 shall be backfilled with sand. The sand backfill shall be water-jetted and vibrated during backfilling. All costs shall be paid for as L.F. FTM, Sand (Flushed & Vibrated).

NOTE: 2-foot minimum vertical separation between water service lines and all sanitary sewer lines shall be maintained at crossings. 10-foot horizontal separation between water service lines and all sanitary sewer lines and manholes shall be maintained. Distances are to be measured from edge-to-edge, at the closest point.



BAUGHMAN COMPANY
315 Ellis St.
Wichita, KS 67211
316-262-7271
BaughmanCo.com

BETZEN ADDITION
PHASE 1

LINE 2

SANITARY SEWER
IMPROVEMENTS
PROJECT NUMBER:
XXX
DESIGN: AEG DRAWN: AJV
DATE: August 5, 2025
SHEET OF
06 26

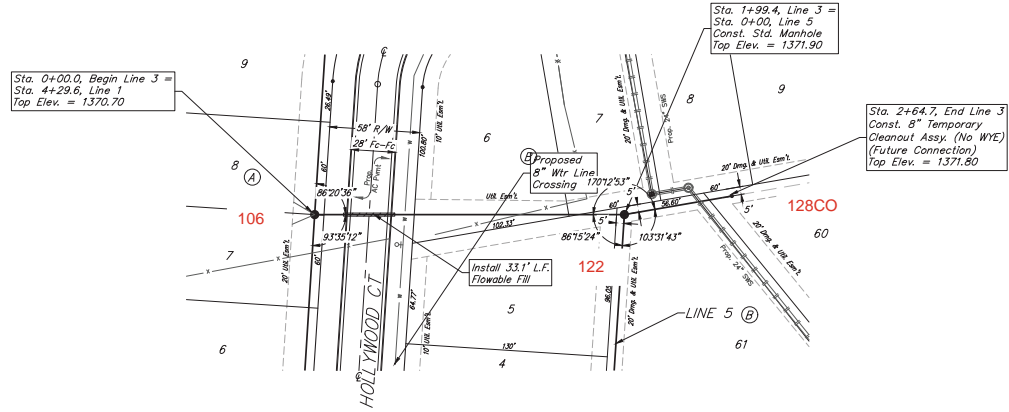
BENCHMARKS:

CITY OF WICHITA BENCHMARK DISK AT SOUTH END OF HUBGUARD ON THE SW COR. OF R.C.B.C., WEST SIDE OF ROCK ROAD, 706' NORTH-NORTHWEST OF THE NORTHWEST CORNER OF LOT 44, BLOCK A, ROCKY FORD ADDITION.
ELEV. = 1368.14 NAVD88

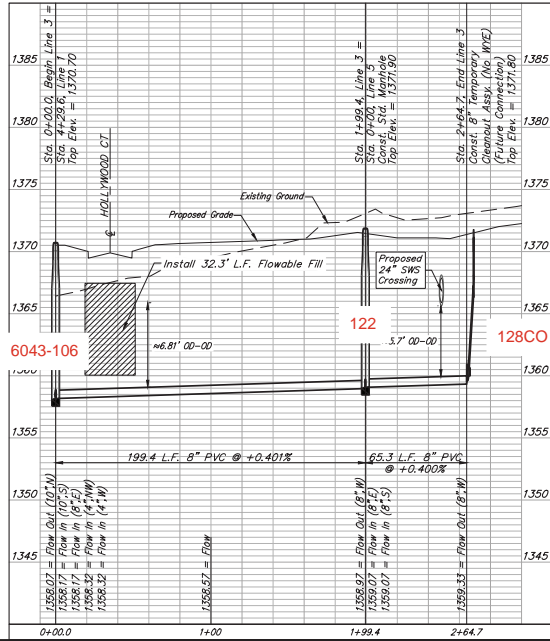
SQUARE CUT ON TOP OF CURB NW CORNER OF LOT 14, BLOCK B, R.F. ADDITION.
ELEV. = 1368.18 NAVD88

SQUARE CUT ON TOP OF CURB NW CORNER OF LOT 7, BLOCK C, R.F. ADDITION.
ELEV. = 1367.26 NAVD88

SQUARE CUT ON TOP OF CURB NW CORNER OF LOT 47, BLOCK C, R.F. ADDITION.
ELEV. = 1367.90 NAVD88



NOTE: 2-foot minimum vertical separation between water service lines and all sanitary sewer lines shall be maintained at crossings. 10-foot horizontal separation between water service lines and all sanitary sewer lines and manholes shall be maintained. Distances are to be measured from edge-to-edge, at the closest point.



BAUGHMAN COMPANY
315 Ellis St.
Wichita, KS 67211
316-262-7271
BaughmanCo.com

BETZEN ADDITION
PHASE 1

LINE 3

SANITARY SEWER
IMPROVEMENTS

PROJECT NUMBER:
XXX

DESIGN: AEG DRAWN: AJV
DATE: August 5, 2025

SHEET OF
07 26

File: E:\Projects\Betzzen Addition\22-06-18006\Engineering\Phase 1\SE PLAN3.dwg

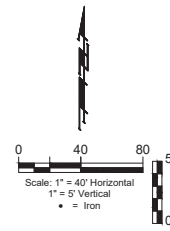
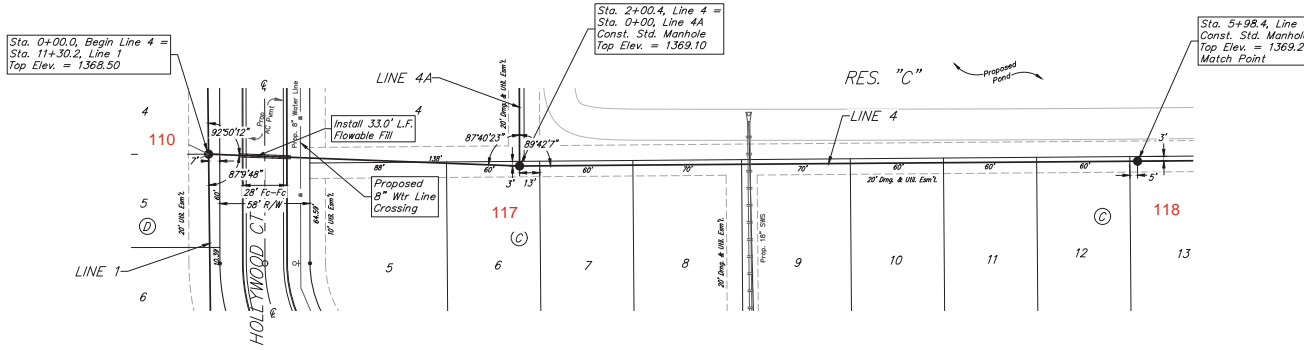
BENCHMARKS:

CITY OF WICHITA BENCHMARK DISK AT SOUTH END OF HUBBARD ON THE SW COR. OF R.C.B.C., WEST SIDE OF ROCK ROAD, 706' NORTH-NORTHWEST OF THE NORTHWEST CORNER OF LOT 44, BLOCK A, ROCKY FORD ADDITION. ELEV. = 1368.14 NAVD88

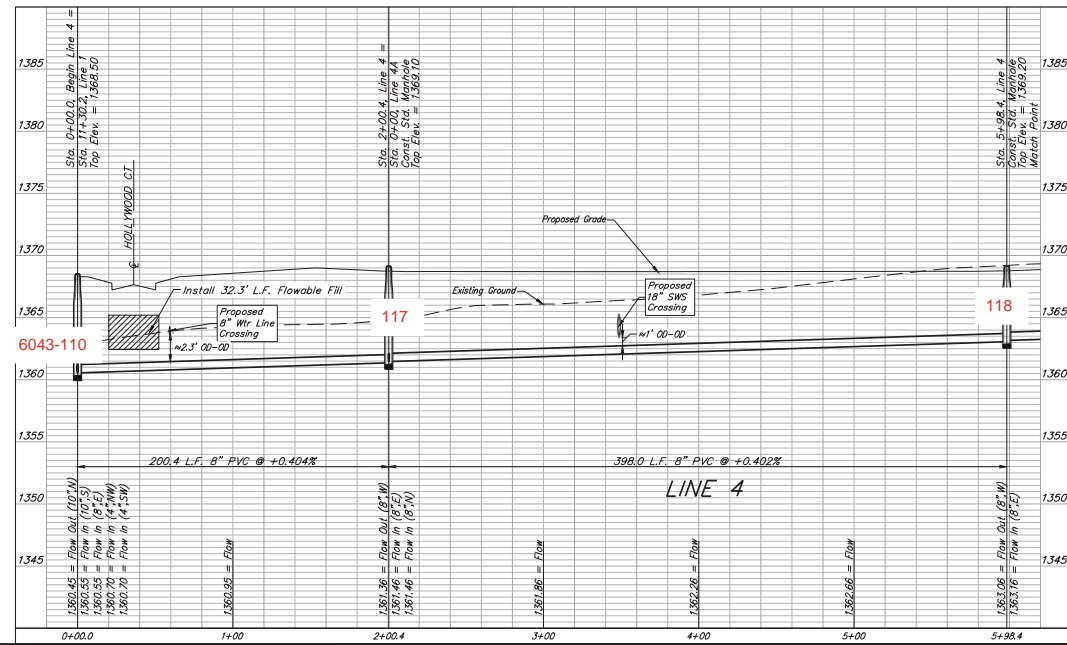
SQUARE CUT ON TOP OF CURB NW CORNER OF LOT 14, BLOCK B, R.F. ADDITION. ELEV. = 1368.18 NAVD88

SQUARE CUT ON TOP OF CURB NW CORNER OF LOT 7, BLOCK C, R.F. ADDITION. ELEV. = 1367.26 NAVD88

SQUARE CUT ON TOP OF CURB NW CORNER OF LOT 47, BLOCK C, R.F. ADDITION. ELEV. = 1367.90 NAVD88



NOTE: 2-foot minimum vertical separation between water service lines and all sanitary sewer lines shall be maintained at crossings. 10-foot horizontal separation between water service lines and all sanitary sewer lines and manholes shall be maintained. Distances are to be measured from edge-to-edge, at the closest point.



BAUGHMAN COMPANY
315 Ellis St.
Wichita, KS 67211
316-262-7271
BaughmanCo.com

BETZEN ADDITION
PHASE 1

LINE 4

SANITARY SEWER IMPROVEMENTS

PROJECT NUMBER:
XXX

DESIGN: AEG DRAWN: AJV

DATE: August 5, 2025

SHEET OF
08 26

File: E:\Projects\Betzzen Addition\22-06-18004\Engineering\Phase 1\SEI PLANS.dwg

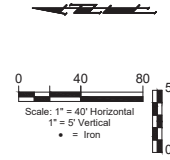
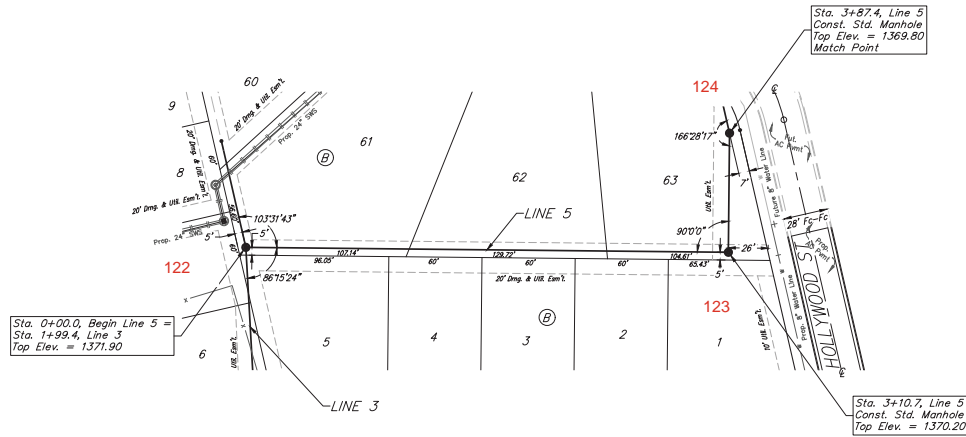
BENCHMARKS:

CITY OF WICHITA BENCHMARK
DISK AT SOUTH END OF
HUBGUARD ON THE SW COR.
OF R.C.B.C., WEST SIDE OF
ROCK ROAD, 706'
NORTH-NORTHWEST OF THE
NORTHWEST CORNER OF LOT
44, BLOCK A, ROCKY FORD
ADDITION.
ELEV. = 1368.14 NAVD88

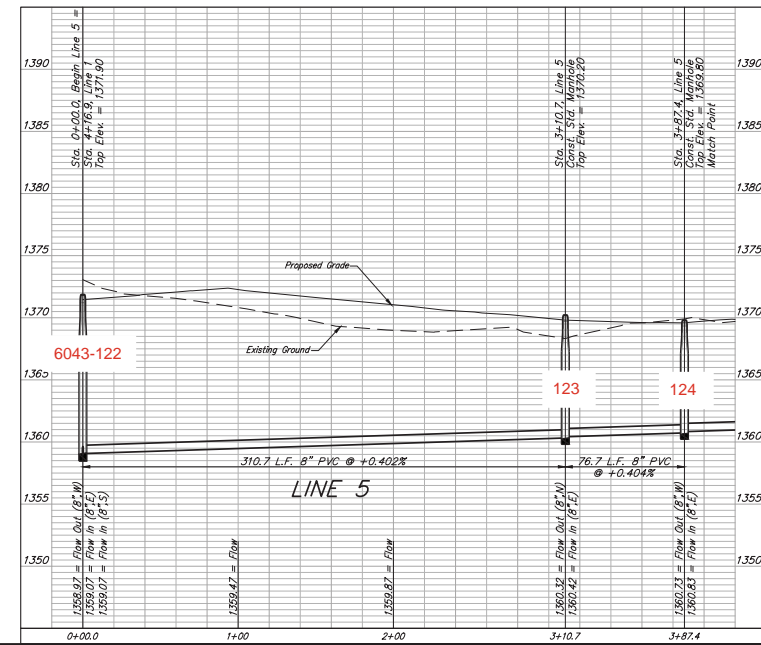
SQUARE CUT ON TOP OF CURB
NW CORNER OF LOT 14,
BLOCK B, R.F. ADDITION.
ELEV. = 1368.18 NAVD88

SQUARE CUT ON TOP OF CURB
NW CORNER OF LOT 7, BLOCK
C, R.F. ADDITION.
ELEV. = 1367.26 NAVD88

SQUARE CUT ON TOP OF CURB
NW CORNER OF LOT 42,
BLOCK C, R.F. ADDITION.
ELEV. = 1367.90 NAVD88



NOTE: 2-foot minimum vertical separation between water service lines and all sanitary sewer lines shall be maintained at crossings. 10-foot horizontal separation between water service lines and all sanitary sewer lines and manholes shall be maintained. Distances are to be measured from edge-to-edge, at the closest point.



BAUGHMAN COMPANY
 315 Ellis St.
 Wichita, KS 67211
 316-262-7271
 BaughmanCo.com

BETZEN ADDITION
 PHASE 1

LINE 5

SANITARY SEWER
 IMPROVEMENTS

PROJECT NUMBER:
 XXX

DESIGN: AEG DRAWN: AJV

DATE: August 5, 2025

SHEET 10 OF 26

File: E:\Project\Betzzen Addition_22-06-1800\Engineering\Phase 1\SE PLANS.dwg

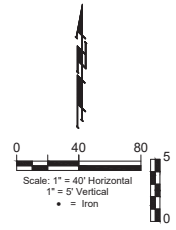
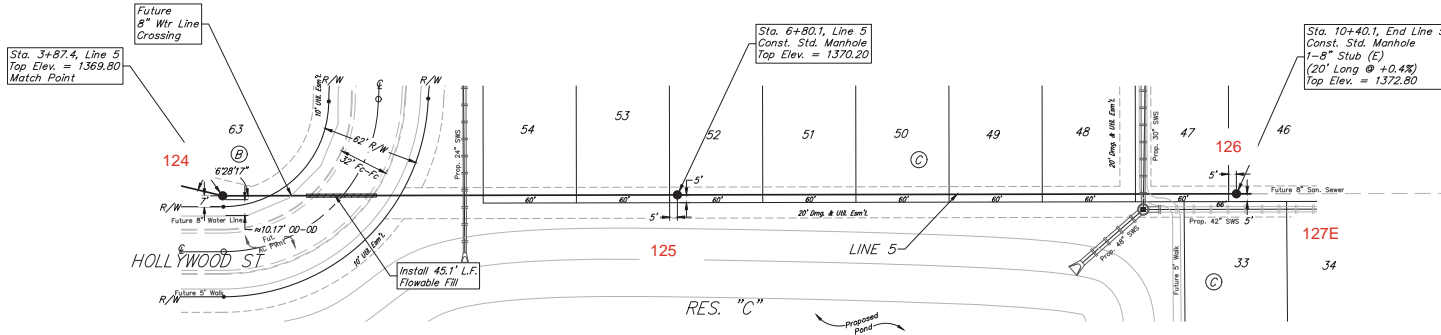
BENCHMARKS:

CITY OF WICHITA BENCHMARK DISK AT SOUTH END OF HUBBARD ON THE SW COR. OF R.C.B.C., WEST SIDE OF ROCK ROAD, 706' NORTH-NORTHWEST OF THE NORTHWEST CORNER OF LOT 44, BLOCK A, ROCKY FORD ADDITION.
ELEV. = 1368.14 NAVD88

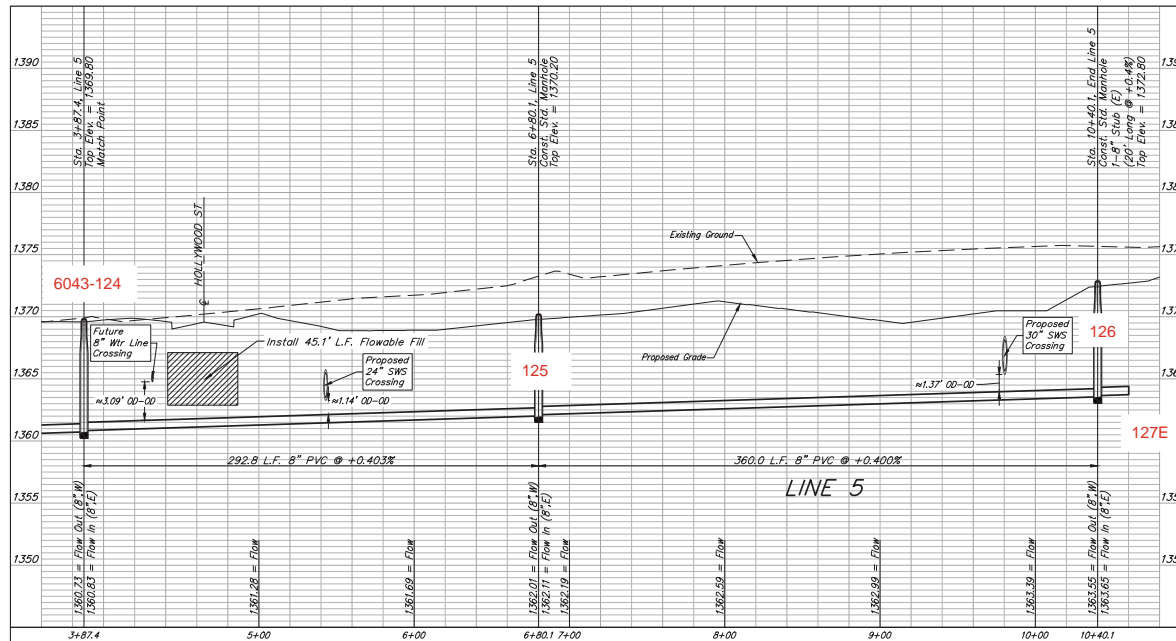
SQUARE CUT ON TOP OF CURB NW CORNER OF LOT 14, BLOCK B, R.F. ADDITION.
ELEV. = 1368.18 NAVD88

SQUARE CUT ON TOP OF CURB NW CORNER OF LOT 7, BLOCK C, R.F. ADDITION.
ELEV. = 1367.26 NAVD88

SQUARE CUT ON TOP OF CURB NW CORNER OF LOT 47, BLOCK C, R.F. ADDITION.
ELEV. = 1367.90 NAVD88



NOTE: 2-foot minimum vertical separation between water service lines and all sanitary sewer lines shall be maintained at crossings. 10-foot horizontal separation between water service lines and all sanitary sewer lines and manholes shall be maintained. Distances are to be measured from edge-to-edge, at the closest point.



BAUGHMAN COMPANY
315 Ellis St.
Wichita, KS 67211
316-262-7271
BaughmanCo.com

BETZEN ADDITION
PHASE 1

LINE 5

SANITARY SEWER
IMPROVEMENTS

PROJECT NUMBER:
XXX

DESIGN: AEG DRAWN: AJV

DATE: August 5, 2025

SHEET OF

11 26

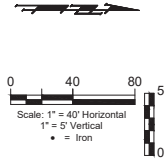
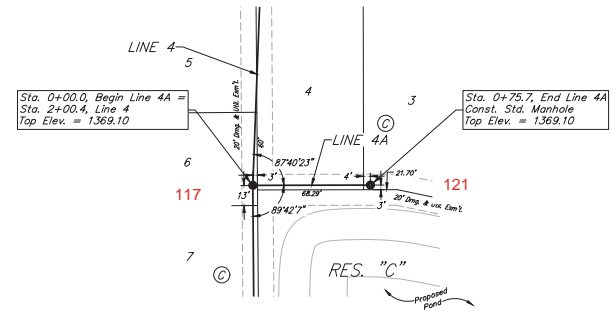
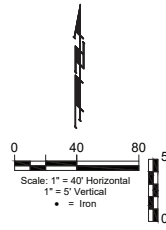
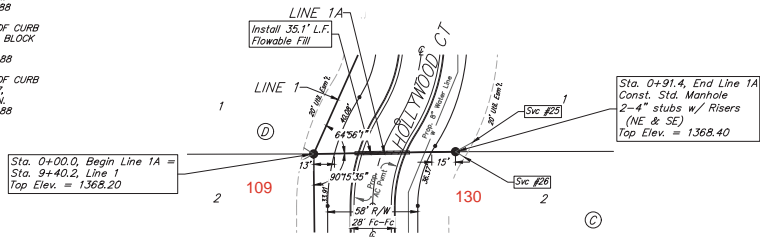
BENCHMARKS:

CITY OF WICHITA BENCHMARK
DISK AT SOUTH END OF
HUBBARD ON THE SW COR.
OF R.C.B.C., WEST SIDE OF
ROCK ROAD, 706
NORTH-NORTHWEST OF THE
NORTHWEST CORNER OF LOT
44, BLOCK A, ROCKY FORD
ADDITION.
ELEV. = 1368.14 NAVD88

SQUARE CUT ON TOP OF CURB
NW CORNER OF LOT 14,
BLOCK B, R.F. ADDITION.
ELEV. = 1368.18 NAVD88

SQUARE CUT ON TOP OF CURB
NW CORNER OF LOT 7, BLOCK
C, R.F. ADDITION.
ELEV. = 1367.26 NAVD88

SQUARE CUT ON TOP OF CURB
NW CORNER OF LOT 42,
BLOCK C, R.F. ADDITION.
ELEV. = 1367.90 NAVD88

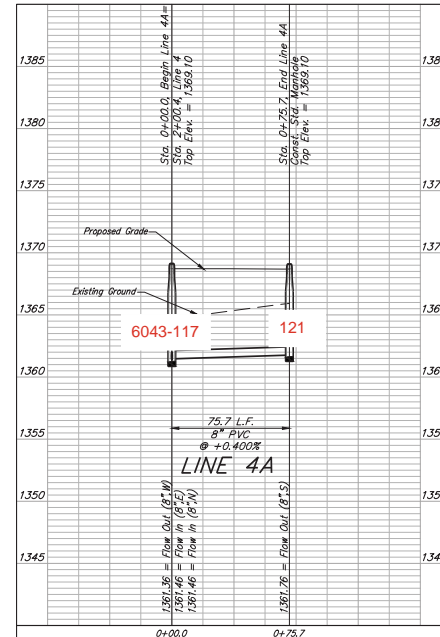
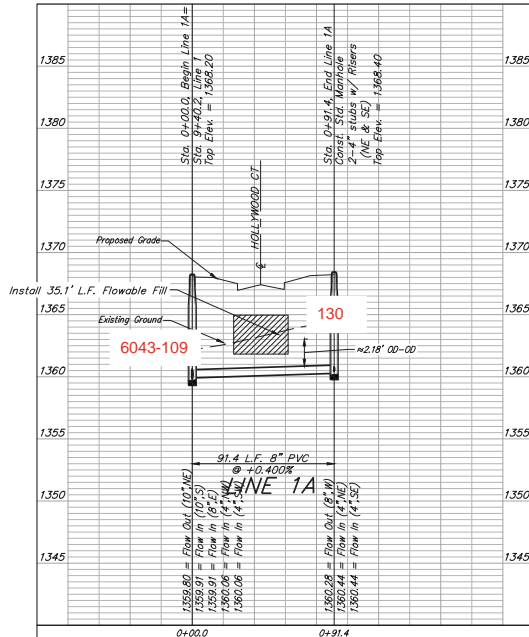


SEWER SERVICE TABLE

NUMBER	TYPE	LOCATION				FOR INFORMATION ONLY	
		LOT NO.	BLOCK NO.	LINE NO.	STATION/DIRECTION	APPROX. LENGTH	4" PIPE
25	4" Sub	1	C	1A	0+91.40/L.S.	3.6	13.2
26	4" Sub	2	C	1A	0+91.40/R.L.	3.6	7.0

NOTE: Vertical Riser Pipe shall be extended to 2' minimum above ground water elevation and 4' maximum below proposed ground elevation.

NOTE: 2-foot minimum vertical separation between water service lines and all sanitary sewer lines shall be maintained at crossings. 10-foot horizontal separation between water service lines and all sanitary sewer lines and manholes shall be maintained. Distances are to be measured from edge-to-edge, at the closest point.



BAUGHMAN COMPANY
315 Ellis St.
Wichita, KS 67211
316-262-7271
BaughmanCo.com

BETZEN ADDITION
PHASE 1

LINE 1A & LINE 4A

SANITARY SEWER IMPROVEMENTS

PROJECT NUMBER:
XXX

DESIGN: AEG DRAWN: AJV

DATE: August 5, 2025

SHEET 12 OF 26

File: E:\Project\Betzzen Addition_22-06-8006\Engineering\Phase 1\SEI PLANS.dwg

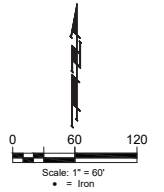
BENCHMARKS:

CITY OF WICHITA BENCHMARK
DISK AT SOUTH END OF
HUBGUARD ON THE SW COR.
OF R.C.B.C., WEST SIDE OF
ROCK ROAD, 706'
NORTH-NORTHWEST OF THE
NORTHWEST CORNER OF LOT
44, BLOCK A, ROCKY FORD
ADDITION.
ELEV. = 1368.14 NAVD88

SQUARE CUT ON TOP OF CURB
NW CORNER OF LOT 14,
BLOCK B, R.F. ADDITION.
ELEV. = 1368.18 NAVD88




SQUARE CUT ON TOP OF CURB
NW CORNER OF LOT 7, BLOCK
C, R.F. ADDITION.
ELEV. = 1367.26 NAVD88

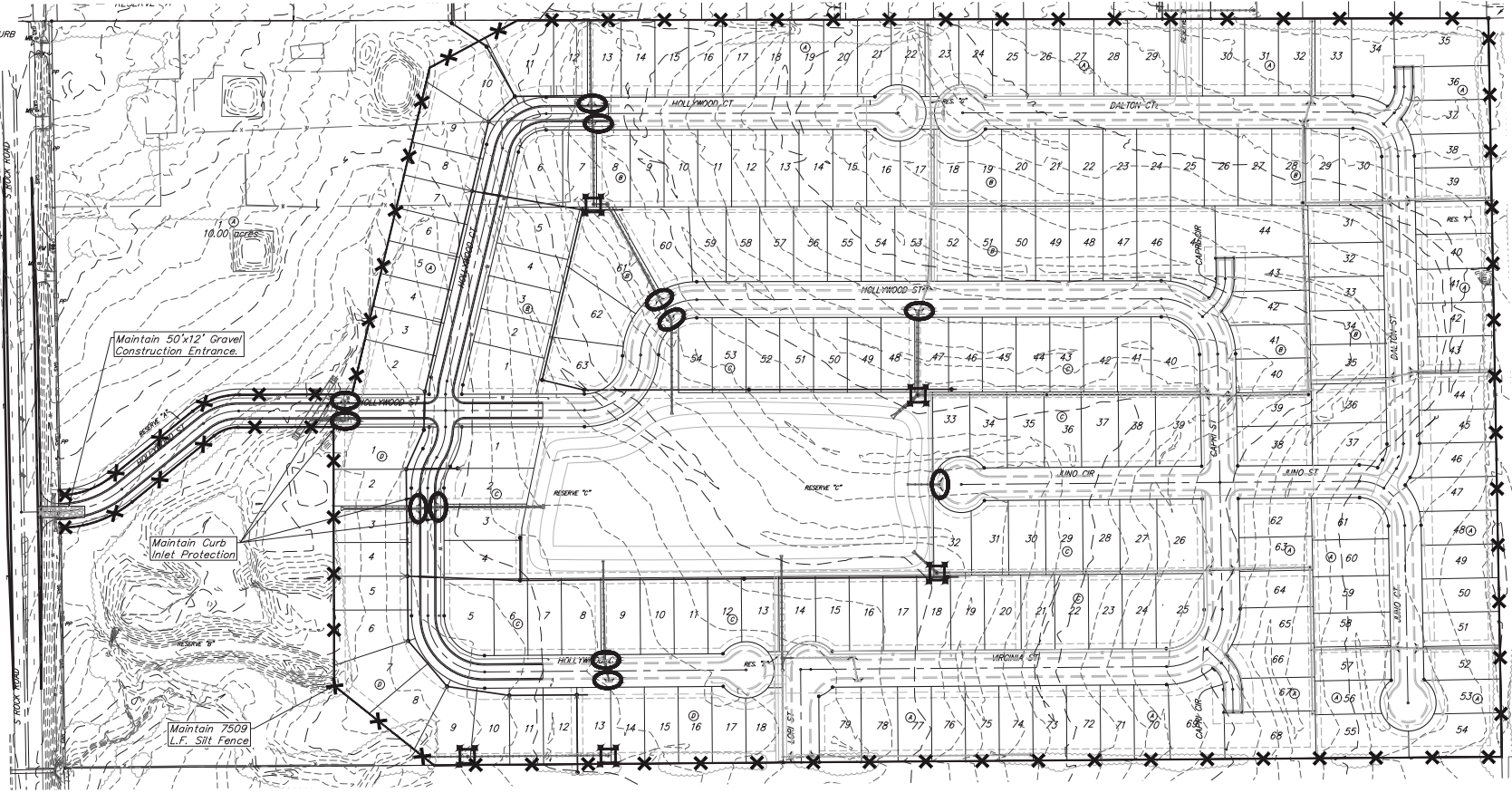
SQUARE CUT ON TOP OF CURB
NW CORNER OF LOT 47,
BLOCK C, R.F. ADDITION.
ELEV. = 1367.90 NAVD88



Existing Ground --- 1364 ---

**EROSION CONTROL PLAN
LEGEND**

-  - DROP INLET PROTECTION
-  - CURB INLET PROTECTION
-  - SILT FENCING



**BAUGHMAN
COMPANY**
315 Ellis St.
Wichita, KS 67211
316-262-7271
BaughmanCo.com

BETZEN ADDITION
PHASE 1

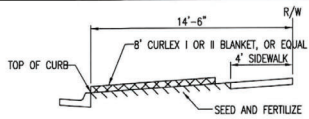
**EROSION
CONTROL**

EROSION CONTROL MEASURE	INSTALL	MAINTAIN
CONSTRUCTION ENTRANCE (EA)	0	0
SILT FENCE (LF)	0	0
CURB INLET PROTECTION (EA)	0	0
DROP INLET PROTECTION (EA)	0	0

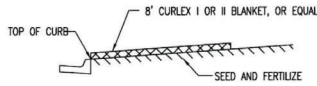
* ALL EXISTING BMPs INCLUDING CONSTRUCTION ENTRANCE, SEDIMENT BARRIERS, SILT FENCE, CUT-OFF TRENCH, AND EROSION CONTROL MAT SHALL BE MAINTAINED AND REPAIRED IF NECESSARY.

Contractor shall make sure all erosion control is in place before project is accepted. This plan represents the minimum standard. Any additional erosion control measures shall be installed by the Contractor as needed.

Sanitary Sewer Improvements
PROJECT NUMBER: XXX
DESIGN: AEG DRAWN: AJV
DATE: August 5, 2025
SHEET 13 OF 26

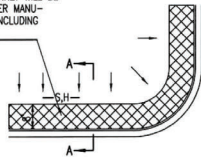


SECTION B-B

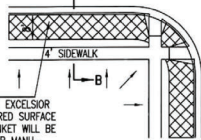


SECTION A-A

INSTALL 8' WIDE CURLEX I OR II EXCELSIOR BLANKET, OR EQUAL, ON PREPARED SURFACE BACK OF CURB. EDGE OF BLANKET WILL BE AT BACK OF CURB. INSTALL PER MANUFACTURER'S RECOMMENDATION, INCLUDING STAPLES. (SEE DETAIL)



SOUTH STREET

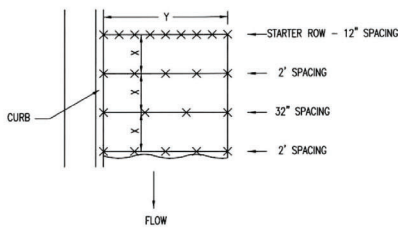


INSTALL 8' WIDE CURLEX I OR II EXCELSIOR BLANKET, OR EQUAL, ON PREPARED SURFACE BACK OF CURB. EDGE OF BLANKET WILL BE AT BACK OF CURB. INSTALL PER MANUFACTURER'S RECOMMENDATION, INCLUDING STAPLES. (SEE DETAIL)

GENERAL NOTES

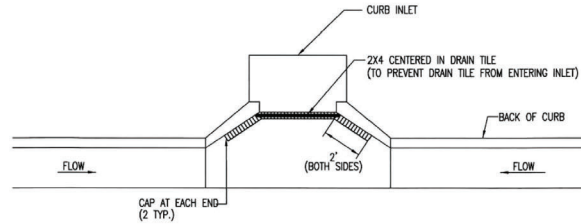
- EXCELSIOR MAT TO BE INSTALLED WHEN SOD IS NOT SPECIFIED ON PROJECT.
- EXCELSIOR BLANKET TO BE INSTALLED OVER SEED AND FERTILIZER, AS SPECIFIED IN THE PROJECT SPECIFICATIONS.
- AFTER INSTALLATION OF EXCELSIOR BLANKET, AT LOCATIONS WHERE CONCENTRATED FLOW CARRIES SEDIMENT OVER THE CURB AND INTO THE GUTTER, SUPPLEMENTAL EROSION CONTROL DEVICES WILL BE INSTALLED BY THE CONTRACTOR AS NEEDED, TO FIX THE PROBLEM.

BACK OF CURB PROTECTION DETAIL



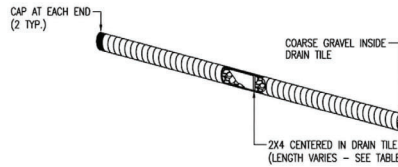
NOTES: USE 6" SEAM OVERLAP (X & Y = RECOMMENDED BY MANUFACTURE)

DETAILS FOR APPROVED EROSION CONTROL MAT

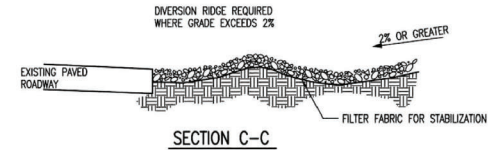


NOTE: PLACE 4" PERFORATED PVC PIPE, FILLED WITH 1/2"-1" DIA. GRAVEL, IN FRONT OF CURB INLET AS SHOWN.

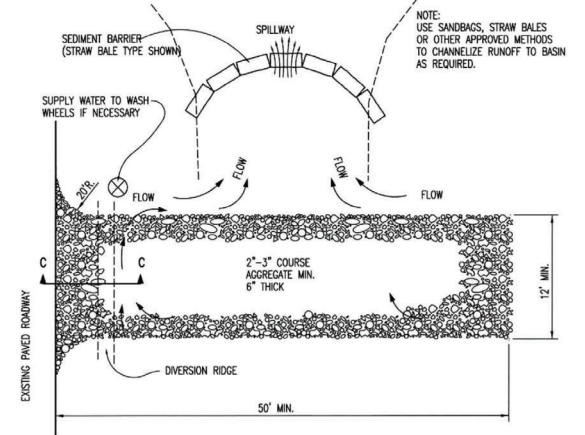
2X4 LENGTH	INLET TYPE	INLET OPENING
5'-6"	1-A	5'-0"
10'-6"	1-A	10'-0"
15'-6"	1-A	15'-0"



CURB INLET PROTECTION
4" PERFORATED PIPE W/ GRAVEL



SECTION C-C



STABILIZED CONSTRUCTION ENTRANCE

GENERAL NOTES

- THE ENTRANCE SHALL BE MAINTAINED IN A CONDITION THAT WILL PREVENT TRACKING OR FLOWING OF SEDIMENT ONTO PUBLIC RIGHTS-OF-WAY. THIS MAY REQUIRE TOP DRESSING, REPAIR AND/OR CLEANOUT OF ANY MEASURES USED TO TRAP SEDIMENT.
- WHEN NECESSARY, WHEELS SHALL BE CLEANED PRIOR TO ENTRANCE ONTO PUBLIC RIGHT-OF-WAY.
- WHEN WASHING IS REQUIRED, IT SHALL BE DONE ON AN AREA STABILIZED WITH CRUSHED STONE THAT DRAINS INTO AN APPROVED SEDIMENT TRAP OR SEDIMENT BASIN, AS SHOWN ABOVE.
- DRIVE ENTRANCES ONTO RESIDENTIAL LOTS WILL NOT BE REQUIRED TO HAVE THE SEDIMENT BARRIER SHOWN, BUT WHEEL WASHING MAY BE REQUIRED IF STABILIZED ENTRANCE IS NOT SUFFICIENT TO KEEP MUD FROM BEING TRACKED ONTO ADJACENT STREET. ENTRANCE SHALL EXTEND FROM BACK OF CURB TO DWELLING.

REVISION DATE: MAY 2013



05/13, 1x2

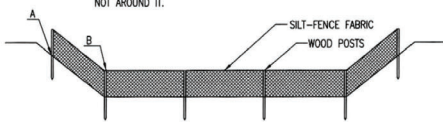
CITY OF WICHITA
PUBLIC WORKS & UTILITIES
ENGINEERING DIVISION

BACK OF CURB PROTECTION,
CURB INLET PROTECTION AND
CONSTRUCTION ENTRANCE

CITY ENGINEER
GARY JANZEN, P.E.

PROJECT NUMBER	OCA NUMBER	DATE
CITY ENGINEER'S OFFICE CITY HALL - SEVENTH FLOOR 435 NORTH MAIN STREET WICHITA, KANSAS 67202-1620 (316) 268-4501		SHEET 14 of 26

NOTE: POINT A MUST BE HIGHER THAN POINT B SO THAT WATER FLOWS OVER THE SILT FENCE FABRIC AND NOT AROUND IT.



ELEVATION
SILT FENCE DITCH CHECKS
(STREAM PROTECTION)

MATERIAL SPECIFICATION:

SILT FENCE FABRIC SHOULD CONFORM TO THE ASHTO M288 96 SILT FENCE SPECIFICATION. THE POSTS USED TO SUPPORT THE SILT FENCE FABRIC SHOULD BE A HARDWOOD MATERIAL WITH THE FOLLOWING MINIMUM DIMENSIONS: 2" SQUARE (NOMINAL) BY 4' LONG. SILT FENCE FABRIC SHOULD BE ATTACHED TO THE WOODEN POSTS WITH STAPLES, WIRE, ZIP TIES, OR NAILS.

PLACEMENT:

PLACE SILT FENCE IN DITCHES WHERE IT IS UNLIKELY THAT IT WILL BE OVERTOPPED. WATER SHOULD FLOW THROUGH A SILT FENCE DITCH CHECK, NOT OVER IT. SILT FENCE DITCH CHECKS OFTEN FAIL WHEN OVERTOPPED. SILT FENCE DITCH CHECKS SHOULD BE PLACED PERPENDICULAR TO THE FLOWLINE OF THE DITCH. THE SILT FENCE SHOULD EXTEND FAR ENOUGH SO THAT THE GROUND LEVEL AT THE ENDS OF THE FENCE IS HIGHER THAN THE TOP OF THE LOW POINT OF THE FENCE. THIS PREVENTS WATER FROM FLOWING AROUND THE CHECK. SILT FENCE DITCH CHECKS SHOULD NOT BE PLACED IN DITCHES WHERE HIGH FLOWS ARE EXPECTED. ROCK CHECKS SHOULD BE USED INSTEAD. SILT FENCE SHOULD BE PLACED IN DITCHES WITH SLOPES OF 6% OR LESS. FOR SLOPES STEEPER THAN 6%, ROCK CHECKS SHOULD BE USED.

THE FOLLOWING TABLE PROVIDES CHECK SPACING FOR A GIVEN DITCH GRADE:

DITCH CHECK DITCH GRADE (%)	CHECK SPACING (FEET)
0.5	200
1.0	200
2.0	100
3.0	65
4.0	50
4.0	40
6.0	30

PROPER INSTALLATION METHOD:

EXCAVATE A TRENCH PERPENDICULAR TO THE DITCH FLOWLINE THAT IS AT LEAST 12" DEEP BY 6" WIDE. EXTEND THE TRENCH IN A STRAIGHT LINE ALONG THE ENTIRE LENGTH OF THE PROPOSED DITCH CHECK. PLACE THE SOIL ON THE UPSTREAM SIDE OF THE TRENCH FOR LATER USE. ROLL OUT A CONTINUOUS LENGTH OF SILT FENCE FABRIC ON THE DOWNSTREAM SIDE OF THE TRENCH. PLACE THE EDGE OF THE FABRIC IN THE TRENCH STARTING AT THE TOP UPSTREAM EDGE OF THE TRENCH. LINE TWO SIDES OF THE TRENCH WITH THE FABRIC AS SHOWN ON DETAIL. BACKFILL OVER THE FABRIC IN THE TRENCH WITH THE EXCAVATED SOIL AND COMPACT. AFTER FILLING THE TRENCH, APPROXIMATELY 24" TO 36" OF SILT FENCE FABRIC SHOULD REMAIN EXPOSED. LAY THE EXPOSED SILT FENCE ON THE UPSTREAM SIDE OF THE TRENCH TO CLEAR AN AREA FOR DRIVING IN THE POSTS. JUST DOWNSTREAM OF THE TRENCH, DRIVE POSTS INTO THE GROUND TO A DEPTH OF AT LEAST 24". PLACE POSTS NO MORE THAN 4' APART. ATTACH THE SILT FENCE TO THE ANCHORED POST WITH STAPLES, WIRE, ZIP TIES, OR NAILS.

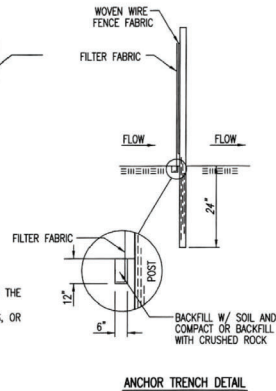
LIST OF COMMON PLACEMENT/INSTALLATION MISTAKES TO AVOID:

WATER SHOULD FLOW THROUGH A SILT FENCE DITCH CHECK—NOT OVER IT. PLACE SILT FENCE IN DITCHES WHERE IT IS UNLIKELY THAT IT WILL BE OVERTOPPED. SILT FENCE INSTALLATIONS QUICKLY DETERIORATE WHEN WATER OVERTOPS THEM. DO NOT PLACE SILT FENCE POSTS ON THE UPSTREAM SIDE OF THE SILT FENCE FABRIC. IN THIS CONFIGURATION, THE FORCE OF THE WATER IS NOT RESTRICTED BY THE POSTS, BUT ONLY BY THE STAPLES (WIRE, ZIP TIES, NAILS, ETC.). THE SILT FENCE WILL RIP AND FAIL. DO NOT PLACE A SILT FENCE DITCH CHECK DIRECTLY IN FRONT OF A CULVERT OUTLET. IT WILL NOT STAND UP TO THE CONCENTRATED FLOW. DO NOT PLACE SILT FENCE DITCH CHECKS IN DITCHES THAT WILL LIKELY EXPERIENCE HIGH FLOWS. THEY WILL NOT STAND UP TO CONCENTRATED FLOW. FOLLOW PRESCRIBED DITCH CHECK SPACING GUIDELINES. IF SPACING GUIDELINES ARE EXCEEDED, EROSION WILL OCCUR BETWEEN THE DITCH CHECKS. DO NOT ALLOW WATER TO FLOW AROUND THE DITCH CHECK. MAKE SURE THAT THE DITCH CHECK IS LONG ENOUGH SO THAT THE GROUND LEVEL AT THE ENDS OF THE FENCE IS HIGHER THAN THE LOW POINT ON THE TOP OF THE FENCE. DO NOT PLACE SILT FENCE DITCH CHECKS IN CHANNELS WITH SHALLOW SOILS UNDERLAIN BY ROCK. IF THE CHECK IS NOT ANCHORED SUFFICIENTLY, IT WILL WASH OUT.

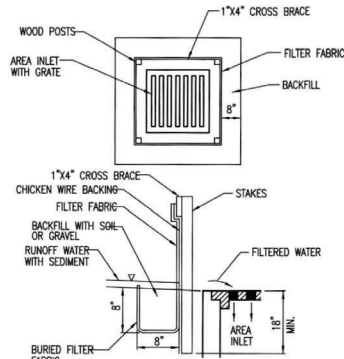
INSPECTION AND MAINTENANCE:

SILT FENCE DITCH CHECKS SHOULD BE INSPECTED EVERY 7 DAYS AND WITHIN 24 HOURS OF A RAINFALL OF 1/2" OR MORE. THE FOLLOWING IS A LIST OF QUESTIONS THAT SHOULD BE ADDRESSED DURING EACH INSPECTION:

- DOES WATER FLOW AROUND THE DITCH CHECK?
- DOES WATER FLOW UNDER THE DITCH CHECK?
- DOES THE SILT FENCE SAG EXCESSIVELY?
- HAS THE SILT FENCE TORN OR BECOME DETACHED FROM THE POSTS?
- DOES SEDIMENT NEED TO BE REMOVED FROM BEHIND THE DITCH CHECK?



ANCHOR TRENCH DETAIL



SILT FENCE BARRIERS FOR AREA INLETS
(INLET PROTECTION)

MATERIAL SPECIFICATION:

SILT FENCE FABRIC SHOULD CONFORM TO THE ASHTO M288 96 SILT FENCE SPECIFICATION. THE WIRE OR POLYMERIC MESH BACKING USED TO HELP SUPPORT THE SILT FENCE FABRIC SHOULD CONFORM TO THE ASHTO M288 96 SILT FENCE SPECIFICATION. THE POSTS USED TO SUPPORT THE SILT FENCE FABRIC SHOULD BE A HARDWOOD MATERIAL WITH THE FOLLOWING MINIMUM DIMENSIONS: 2" SQUARE (NOMINAL) BY 4' LONG. THE MATERIAL USED TO FRAME THE TOPS OF THE POSTS SHOULD BE 1" BY 4" BOARDS. SILT FENCE FABRIC AND SUPPORT BACKING SHOULD BE ATTACHED TO THE WOODEN POSTS AND FRAME WITH STAPLES, WIRE, ZIP TIES, OR NAILS.

PLACEMENT:

PLACE A SILT FENCE DROP INLET BARRIER IN A LOCATION WHERE IT IS UNLIKELY TO BE OVERTOPPED. WATER SHOULD FLOW THROUGH SILT FENCE, NOT OVER IT. SILT FENCE BARRIERS FOR AREA INLETS OFTEN FAIL WHEN REPEATEDLY OVERTOPPED. WHEN USED AS A BARRIER FOR AREA INLETS, SILT FENCE FABRIC AND POSTS MUST BE SUPPORTED AT THE POST BY A WOODEN FRAME. WHEN A SILT FENCE BARRIER FOR AREA INLETS IS LOCATED NEAR AN INLET THAT HAS STEEP APPROACH SLOPES, THE STORAGE CAPACITY BEHIND THE BARRIER IS DRAMATICALLY REDUCED. TIMELY REMOVAL OF SEDIMENT MUST OCCUR FOR A BARRIER TO OPERATE PROPERLY IN THIS LOCATION.

PROPER INSTALLATION METHOD:

EXCAVATE A TRENCH AROUND THE PERIMETER OF THE AREA INLET THAT IS AT LEAST 8" DEEP BY 8" WIDE. DRIVE POSTS TO A DEPTH OF AT LEAST 18" AROUND THE PERIMETER OF THE AREA INLET. THE DISTANCE BETWEEN POSTS SHOULD BE 4' OR LESS. IF THE DISTANCE BETWEEN TWO ADJACENT CORNER POSTS IS MORE THAN 4', ADD ANOTHER POST(S) BETWEEN THEM. CONNECT THE TOPS OF ALL THE POSTS WITH A WOODEN FRAME MADE OF 1" BY 4" BOARDS. USE NAILS OR SCREWS FOR FASTENING. ATTACH THE WIRE OR POLYMERIC-MESH BACKING TO THE OUTSIDE OF THE POST/FRAME STRUCTURE WITH STAPLES, WIRE, ZIP TIES, OR NAILS. ROLL OUT A CONTINUOUS LENGTH OF SILT FENCE FABRIC LONG ENOUGH TO WRAP AROUND THE PERIMETER OF THE AREA INLET. ADD MORE LENGTH FOR OVERLAPPING THE FABRIC JOINT. PLACE THE EDGE OF THE FABRIC IN THE TRENCH, STARTING AT THE OUTSIDE EDGE OF THE TRENCH. LINE ALL THREE SIDES OF THE TRENCH WITH THE FABRIC. BACKFILL OVER THE FABRIC IN THE TRENCH WITH THE EXCAVATED SOIL AND COMPACT. AFTER FILLING THE TRENCH, APPROXIMATELY 24" TO 36" OF SILT FENCE FABRIC SHOULD REMAIN EXPOSED. ATTACH THE SILT FENCE TO THE OUTSIDE OF THE POST/FRAME STRUCTURE WITH STAPLES, WIRE, ZIP TIES, OR NAILS. THE JOINT SHOULD BE OVERLAPPED TO THE NEXT POST.

NOTE: WHEN A SILT FENCE BARRIER FOR AREA INLET IS PLACED IN A SHALLOW MEDIAN DITCH, MAKE SURE THAT THE TOP OF THE BARRIER IS NOT HIGHER THAN THE PAVED ROAD. IN THIS CONFIGURATION, WATER MAY SPREAD ONTO THE ROADWAY CAUSING A HAZARDOUS CONDITION.

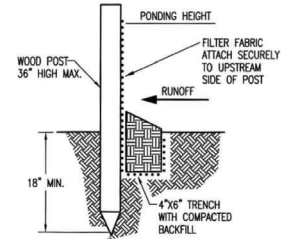
LIST OF COMMON PLACEMENT/INSTALLATION MISTAKES TO AVOID:

WATER SHOULD FLOW THROUGH A SILT FENCE BARRIER FOR AREA INLET—NOT OVER IT. PLACE A SILT FENCE BARRIER FOR AREA INLET IN A LOCATION WHERE IT IS UNLIKELY TO BE OVERTOPPED. SILT FENCE BARRIER FOR AREA INLETS OFTEN FAIL WHEN REPEATEDLY OVERTOPPED. DO NOT PLACE POSTS ON THE OUTSIDE OF THE SILT FENCE BARRIER FOR AREA INLET. IN THIS CONFIGURATION, THE FORCE OF THE WATER IS NOT RESTRICTED BY THE POSTS, BUT ONLY BY THE STAPLES (WIRE, ZIP TIES, NAILS, ETC.). THE SILT FENCE WILL RIP AND FAIL. DO NOT INSTALL SILT FENCE BARRIER FOR AREA INLETS WITHOUT FRAMING THE TOP OF THE POSTS. THE CORNER POSTS AROUND AREA INLETS ARE STRESSED IN TWO DIRECTIONS WHEREAS A NORMAL SILT FENCE IS ONLY STRESSED IN ONE DIRECTION. THIS ADDED STRESS REQUIRES MORE SUPPORT.

INSPECTION AND MAINTENANCE:

SILT FENCE BARRIER FOR AREA INLETS SHOULD BE INSPECTED EVERY 7 DAYS AND WITHIN 24 HOURS OF A RAINFALL OF 1/2" OR MORE. THE FOLLOWING IS A LIST OF QUESTIONS THAT SHOULD BE ADDRESSED DURING EACH INSPECTION:

- DOES WATER FLOW UNDER THE SILT FENCE?
- DOES THE SILT FENCE SAG EXCESSIVELY?
- HAS THE SILT FENCE TORN OR BECOME DETACHED FROM THE POSTS?
- DOES SEDIMENT NEED TO BE REMOVED FROM BEHIND THE AREA INLET BARRIER?



SILT FENCE BARRIERS

MATERIAL SPECIFICATION:

SILT FENCE FABRIC SHOULD CONFORM TO THE ASHTO M288 96 SILT FENCE SPECIFICATION. THE POSTS USED TO SUPPORT THE SILT FENCE FABRIC SHOULD BE A HARDWOOD MATERIAL WITH THE FOLLOWING MINIMUM DIMENSIONS: 2" SQUARE (NOMINAL) BY 4' LONG. SILT FENCE FABRIC SHOULD BE ATTACHED TO THE WOODEN POSTS WITH STAPLES, WIRE, ZIP TIES, OR NAILS.

PLACEMENT:

A SLOPE BARRIER SHOULD BE USED AT THE TOE OF A SLOPE WHEN A DITCH DOES NOT EXIST. THE SLOPE BARRIER SHOULD BE PLACED ON NEARLY LEVEL GROUND 5' TO 10' AWAY FROM THE TOE OF A SLOPE. THE BARRIER IS PLACED AWAY FROM THE TOE OF THE SLOPE TO PROVIDE ADEQUATE STORAGE FOR SETTLING OUT SEDIMENT. WHEN PRACTICABLE, SILT FENCE SLOPE BARRIERS SHOULD BE PLACED ALONG CONTOURS TO AVOID A CONCENTRATION OF FLOW. SILT FENCE SLOPE BARRIERS CAN ALSO BE PLACED ALONG RIGHT-OF-WAY FENCE LINES TO KEEP SEDIMENT FROM CROSSING ONTO ADJACENT PROPERTY. WHEN PLACED IN THIS MANNER, THE SLOPE BARRIER WILL NOT LIKELY FOLLOW CONTOURS.

PROPER INSTALLATION METHOD:

EXCAVATE A TRENCH THE LENGTH OF THE PLANNED SLOPE BARRIER THAT IS 6" DEEP BY 4" WIDE. MAKE SURE THAT THE TRENCH IS EXCAVATED ALONG A SINGLE CONTOUR. WHEN PRACTICABLE, SLOPE BARRIERS SHOULD BE PLACED ALONG CONTOURS TO AVOID A CONCENTRATION OF FLOW. PLACE THE SOIL ON THE UPSLOPE SIDE OF THE TRENCH FOR LATER USE. ROLL OUT A CONTINUOUS LENGTH OF SILT FENCE FABRIC ON THE DOWNSLOPE SIDE OF THE TRENCH. PLACE THE EDGE OF THE FABRIC IN THE TRENCH STARTING AT THE TOP UPSLOPE EDGE. LINE ALL THREE SIDES OF THE TRENCH WITH THE FABRIC. BACKFILL OVER THE FABRIC IN THE TRENCH WITH THE EXCAVATED SOIL AND COMPACT. AFTER FILLING THE TRENCH, APPROXIMATELY 24" TO 36" OF SILT-FENCE FABRIC SHOULD REMAIN EXPOSED. LAY THE EXPOSED SILT FENCE UPSLOPE OF THE TRENCH TO CLEAR AN AREA FOR DRIVING IN THE POSTS. JUST DOWNSLOPE OF THE TRENCH, DRIVE POSTS INTO THE GROUND TO A DEPTH OF AT LEAST 18". PLACE POSTS NO MORE THAN 4' APART. ATTACH THE SILT FENCE TO THE ANCHORED POST WITH STAPLES, WIRE, ZIP TIES, OR NAILS.

LIST OF COMMON PLACEMENT/INSTALLATION MISTAKES TO AVOID:

WHEN PRACTICABLE, DO NOT PLACE SILT FENCE SLOPE BARRIERS ACROSS CONTOURS. SLOPE BARRIERS SHOULD BE PLACED ALONG CONTOURS TO AVOID A CONCENTRATION OF FLOW. WHEN THE FLOW CONCENTRATES, IT OVERTOPS THE BARRIER AND THE SILT FENCE SLOPE BARRIER QUICKLY DETERIORATES. DO NOT PLACE SILT-FENCE POSTS ON THE UPSLOPE SIDE OF THE SILT FENCE FABRIC. IN THIS CONFIGURATION, THE FORCE OF THE WATER IS NOT RESTRICTED BY THE POSTS, BUT ONLY BY THE STAPLES (WIRE, ZIP TIES, NAILS, ETC.). THE SILT FENCE WILL RIP AND FAIL. DO NOT PLACE SILT FENCE SLOPE BARRIERS IN AREAS WITH SHALLOW SOILS UNDERLAIN BY ROCK. IF THE BARRIER IS NOT SUFFICIENTLY ANCHORED, IT WILL WASH OUT. SILT FENCE SLOPE BARRIERS MUST BE DUG INTO THE GROUND—SILT FENCE AT GROUND LEVEL DOES NOT WORK BECAUSE WATER WILL FLOW UNDERNEATH.

INSPECTION AND MAINTENANCE:

SILT FENCE SLOPE BARRIERS SHOULD BE INSPECTED EVERY 7 DAYS AND WITHIN 24 HOURS OF A RAINFALL OF 1/2" OR MORE. THE FOLLOWING IS A LIST OF QUESTIONS THAT SHOULD BE ADDRESSED DURING EACH INSPECTION:

- ARE THERE ANY POINTS ALONG THE SLOPE BARRIER WHERE WATER IS CONCENTRATING?
- DOES WATER FLOW UNDER THE SLOPE BARRIER?
- DOES THE SILT FENCE SAG EXCESSIVELY?
- HAS THE SILT FENCE TORN OR BECOME DETACHED FROM THE POSTS?
- DOES SEDIMENT NEED TO BE REMOVED FROM BEHIND THE SLOPE BARRIER?

REVISION DATE: MAY 2013



CITY OF WICHITA
PUBLIC WORKS & UTILITIES
ENGINEERING DIVISION

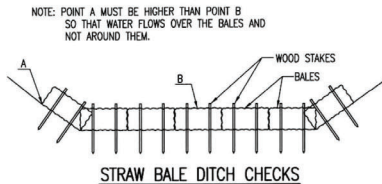
SILT FENCE DITCH CHECK AND BARRIER DETAILS

CITY ENGINEER
GARY JANZEN, P.E.

PROJECT NUMBER: _____ OCA NUMBER: _____ DATE: _____

CITY ENGINEER'S OFFICE
CITY HALL - SEVENTH FLOOR
455 NORTH MAIN STREET
WICHITA, KANSAS 67202-1620
(316) 268-4501

SHEET
15 of 26



STRAW BALE DITCH CHECKS

MATERIAL SPECIFICATION:

BALE DITCH CHECKS MAY BE CONSTRUCTED OF WHEAT STRAW, OAT STRAW, PRAIRIE HAY, OR BROMEGRASS HAY THAT IS FREE OF WEEDS DECLARED NOXIOUS BY THE KANSAS STATE BOARD OF AGRICULTURE. THE STAKES USED TO ANCHOR THE BALES SHOULD BE A HARDWOOD MATERIAL WITH THE FOLLOWING MINIMUM DIMENSIONS: 2" SQUARE (NOMINAL) BY 4' LONG. OPTIONAL: THE DOWNSTREAM SCOUR APRON SHOULD BE CONSTRUCTED OF A DOUBLE-NETTED STRAW EROSION-CONTROL BLANKET AT LEAST 6' WIDE. OPTIONAL: THE METAL LANDSCAPE STAPLES USED TO ANCHOR THE EROSION-CONTROL BLANKET SHOULD BE AT LEAST 8" LONG.

PLACEMENT:

BALE DITCH CHECKS SHOULD BE PLACED PERPENDICULAR TO THE FLOWLINE OF THE DITCH. THE DITCH CHECK SHOULD EXTEND FAR ENOUGH SO THAT THE GROUND LEVEL AT THE ENDS OF THE CHECK IS HIGHER THAN THE TOP OF THE LOWEST CENTER BALE. THIS PREVENTS WATER FROM FLOWING AROUND THE CHECK. STRAW BALE DITCH CHECKS SHOULD NOT BE PLACED IN DITCHES WHERE HIGH FLOWS ARE EXPECTED. ROCK CHECKS SHOULD BE USED INSTEAD. BALES SHOULD BE PLACED IN DITCHES WITH SLOPES OF 6% OR LESS. FOR SLOPES STEEPER THAN 6%, ROCK CHECKS SHOULD BE USED. THE FOLLOWING TABLE PROVIDES CHECK SPACING FOR A GIVEN DITCH GRADE:

DITCH GRADE (%)	CHECK SPACING (FEET)
0.5	200
1.0	200
2.0	100
3.0	65
4.0	50
5.0	40
6.0	30

PROPER INSTALLATION METHOD:

EXCAVATE A TRENCH PERPENDICULAR TO THE DITCH FLOWLINE THAT IS 4" DEEP AND A BALE'S WIDTH WIDE. EXTEND THE TRENCH IN A STRAIGHT LINE ALONG THE ENTIRE LENGTH OF THE PROPOSED DITCH CHECK. PLACE THE SOIL ON THE UPSTREAM SIDE OF THE TRENCH IT WILL BE USED LATER. OPTIONAL: ON THE DOWNSTREAM SIDE OF THE TRENCH, ROLL OUT A LENGTH OF EROSION-CONTROL BLANKET (SCOUR APRON) EQUAL TO THE LENGTH OF THE TRENCH. PLACE THE UPSTREAM EDGE OF THE EROSION-CONTROL BLANKET ALONG THE BOTTOM UPSTREAM EDGE OF THE TRENCH. THE EROSION CONTROL BLANKET SHOULD BE ANCHORED IN THE TRENCH WITH ONE ROW OF 8" LANDSCAPE STAPLES PLACED ON 18" CENTERS. THE REMAINDER OF THE EROSION-CONTROL BLANKET (THE PORTION THAT IS NOT LYING IN THE TRENCH) WILL SERVE AS THE DOWNSTREAM SCOUR APRON. THIS SECTION OF THE BLANKET SHOULD BE ANCHORED TO THE GROUND WITH 8" LANDSCAPE STAPLES PLACED AROUND THE PERIMETER OF THE BLANKET ON 18" CENTERS. THE REMAINDER OF THE BLANKET SHOULD BE ANCHORED USING TWO EVENLY SPACED ROWS OF 8" LANDSCAPE STAPLES ON 18" CENTERS PLACED PERPENDICULAR TO THE FLOWLINE OF THE DITCH. PLACE THE BALES IN THE TRENCH, MAKING SURE THAT THEY ARE BUTTED TIGHTLY. TWO STAKES SHOULD BE DRIVEN THROUGH EACH BALE ALONG THE CENTERLINE OF THE DITCH CHECK, APPROXIMATELY 6" TO 8" IN FROM THE BALE ENDS. STAKES SHOULD BE DRIVEN AT LEAST 12" INTO THE GROUND. ONCE ALL THE BALES HAVE BEEN INSTALLED AND ANCHORED, PLACE THE EXCAVATED SOIL AGAINST THE UPSTREAM SIDE OF THE CHECK AND COMPACT IT. THE COMPACTED SOIL SHOULD BE NO MORE THAN 3" TO 4" DEEP AND EXTEND UPSTREAM NO MORE THAN 24".

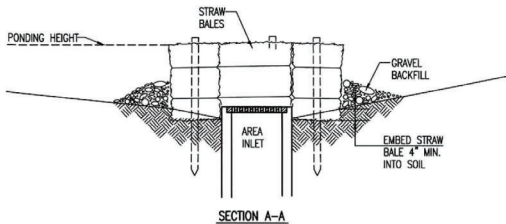
LIST OF COMMON PLACEMENT/INSTALLATION MISTAKES TO AVOID:

DO NOT PLACE A BALE DITCH CHECK DIRECTLY IN FRONT OF A CULVERT OUTLET. IT WILL NOT STAND UP TO THE CONCENTRATED FLOW. DO NOT PLACE BALE DITCH CHECKS IN DITCHES THAT WILL LIKELY EXPERIENCE HIGH FLOWS. THEY WILL NOT STAND UP TO CONCENTRATED FLOW. FOLLOW PRESCRIBED DITCH-CHECK SPACING GUIDELINES. IF SPACING GUIDELINES ARE EXCEEDED, EROSION WILL OCCUR BETWEEN THE DITCH CHECKS. DO NOT ALLOW WATER TO FLOW AROUND THE DITCH CHECK. MAKE SURE THAT THE DITCH CHECK IS LONG ENOUGH SO THAT THE GROUND LEVEL AT THE ENDS OF THE CHECK IS HIGHER THAN THE TOP OF THE LOWEST CENTER BALE. DO NOT PLACE BALE DITCH CHECKS IN CHANNELS WITH SHALLOW SOILS UNDERLAIN BY ROCK. IF THE CHECK IS NOT ANCHORED SUFFICIENTLY, IT WILL WASH OUT. BALE DITCH CHECKS MUST BE DUG INTO THE GROUND. BALES AT GROUND LEVEL DO NOT WORK BECAUSE THEY ALLOW WATER TO FLOW UNDER THE CHECK.

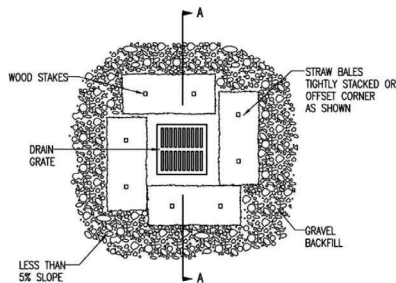
INSPECTION AND MAINTENANCE:

BALE DITCH CHECKS SHOULD BE INSPECTED EVERY 7 DAYS AND WITHIN 24 HOURS OF A RAINFALL OF 1/2" OR MORE. THE FOLLOWING IS A LIST OF QUESTIONS THAT SHOULD BE ADDRESSED DURING EACH INSPECTION:

- DOES WATER FLOW AROUND THE DITCH CHECK?
- DOES WATER FLOW UNDER THE DITCH CHECK?
- DOES WATER FLOW THROUGH SPACES BETWEEN ABUTTING BALES?
- ARE ANY BALES AND/OR SCOUR APRONS (OPTIONAL) DISLODGED?
- ARE BALES DECOMPOSING DUE TO AGE AND/OR WATER DAMAGE?
- DOES SEDIMENT NEED TO BE REMOVED FROM BEHIND THE DITCH CHECK?



SECTION A-A



STRAW BALE BARRIERS FOR AREA INLETS (INLET PROTECTION)

MATERIAL SPECIFICATION:

BALE AREA INLET BARRIERS SHOULD BE CONSTRUCTED OF WHEAT STRAW, OAT STRAW, PRAIRIE HAY, OR BROMEGRASS HAY THAT IS FREE OF WEEDS DECLARED NOXIOUS BY THE KANSAS STATE BOARD OF AGRICULTURE. THE STAKES USED TO ANCHOR THE BALES SHOULD BE A HARDWOOD MATERIAL WITH THE FOLLOWING MINIMUM DIMENSIONS: 2" SQUARE (NOMINAL) BY 4' LONG. TWINE SHOULD BE USED TO BIND BALES. THE USE OF WIRE BINDING IS PROHIBITED BECAUSE IT DOES NOT BIODEGRADE READILY.

PLACEMENT:

BALE AREA INLET BARRIERS SHOULD BE PLACED DIRECTLY AROUND THE PERIMETER OF A DROP INLET. WHEN A BALE AREA INLET BARRIER IS LOCATED NEAR AN INLET THAT HAS STEEP APPROACH SLOPES, THE STORAGE CAPACITY BEHIND THE BARRIER IS DRAMATICALLY REDUCED. TIMELY REMOVAL OF SEDIMENT MUST OCCUR FOR A BARRIER TO OPERATE PROPERLY IN THIS LOCATION.

PROPER INSTALLATION METHOD:

EXCAVATE A TRENCH AROUND THE PERIMETER OF THE AREA INLET THAT IS AT LEAST 4" DEEP BY A BALE'S WIDTH WIDE. PLACE THE BALES IN THE TRENCH, MAKING SURE THAT THEY ARE BUTTED TIGHTLY. SOME BALES MAY NEED TO BE SHORTENED TO FIT INTO THE TRENCH AROUND THE AREA INLET. TWO STAKES SHOULD BE DRIVEN THROUGH EACH BALE, APPROXIMATELY 6" TO 8" IN FROM THE BALE ENDS. STAKES SHOULD BE DRIVEN AT LEAST 12" INTO THE GROUND. ONCE ALL THE BALES HAVE BEEN INSTALLED AND ANCHORED, PLACE THE EXCAVATED SOIL AGAINST THE RECEIVING SIDE OF THE BARRIER AND COMPACT IT. THE COMPACTED SOIL SHOULD BE NO MORE THAN 3" TO 4" DEEP. NOTE: WHEN A BALE AREA INLET BARRIER IS PLACED IN A SHALLOW MEDIAN DITCH, MAKE SURE THAT THE TOP OF THE BARRIER IS NOT HIGHER THAN THE PAVED ROAD. IN THIS CONFIGURATION, WATER MAY SPREAD ONTO THE ROADWAY CAUSING A HAZARDOUS CONDITION.

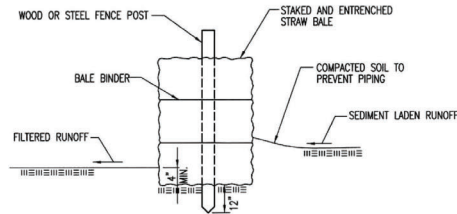
LIST OF COMMON PLACEMENT/INSTALLATION MISTAKES TO AVOID:

BALES SHOULD BE PLACED DIRECTLY AGAINST THE PERIMETER OF THE AREA INLET. THIS ALLOWS OVERTOPPING WATER TO FLOW DIRECTLY INTO THE INLET INSTEAD OF ONTO NEARBY SOIL CAUSING SCOUR. BALE AREA INLET BARRIERS MUST BE DUG INTO THE GROUND. BALES AT GROUND LEVEL DO NOT WORK BECAUSE THEY ALLOW WATER TO FLOW UNDER THE BARRIER.

INSPECTION AND MAINTENANCE:

BALE AREA INLET BARRIERS SHOULD BE INSPECTED EVERY 7 DAYS AND WITHIN 24 HOURS OF A RAINFALL OF 1/2" OR MORE. THE FOLLOWING IS A LIST OF QUESTIONS THAT SHOULD BE ADDRESSED DURING EACH INSPECTION:

- DOES WATER FLOW UNDER THE AREA INLET BARRIER?
- DOES WATER FLOW THROUGH SPACES BETWEEN ABUTTING BALES?
- ARE ANY BALES DISLODGED?
- ARE BALES DECOMPOSING DUE TO AGE AND/OR WATER DAMAGE?
- DOES SEDIMENT NEED TO BE REMOVED FROM BEHIND THE AREA INLET BARRIER?



STRAW BALE BARRIERS

MATERIAL SPECIFICATION:

BALE SLOPE BARRIERS MAY BE CONSTRUCTED OF WHEAT STRAW, OAT STRAW, PRAIRIE HAY, OR BROMEGRASS HAY THAT IS FREE OF WEEDS DECLARED NOXIOUS BY THE KANSAS STATE BOARD OF AGRICULTURE. THE STAKES USED TO ANCHOR THE BALES SHOULD BE A HARDWOOD MATERIAL WITH THE FOLLOWING MINIMUM DIMENSIONS: 2" SQUARE (NOMINAL) BY 4' LONG. TWINE SHOULD BE USED TO BIND BALES. THE USE OF WIRE BINDING IS PROHIBITED BECAUSE IT DOES NOT BIODEGRADE READILY.

PLACEMENT:

A SLOPE BARRIER SHOULD BE USED AT THE TOE OF A SLOPE WHEN A DITCH DOES NOT EXIST. THE SLOPE BARRIER SHOULD BE PLACED ON NEARLY LEVEL GROUND 5' TO 10' AWAY FROM THE TOE OF A SLOPE. THE BARRIER IS PLACED AWAY FROM THE TOE OF THE SLOPE TO PROVIDE ADEQUATE STORAGE FOR SETTLING OUT SEDIMENT. WHEN PRACTICABLE, BALE SLOPE BARRIERS SHOULD BE PLACED ALONG CONTOURS TO AVOID A CONCENTRATION OF FLOW. BALE SLOPE BARRIERS CAN ALSO BE PLACED ALONG RIGHT-OF-WAY FENCE LINES TO KEEP SEDIMENT FROM CROSSING ONTO ADJACENT PROPERTY. WHEN PLACED IN THIS MANNER, THE SLOPE BARRIER WILL NOT LIKELY FOLLOW CONTOURS.

PROPER INSTALLATION METHOD:

EXCAVATE A TRENCH THE LENGTH OF THE PLANNED SLOPE BARRIER THAT IS 4" DEEP AND A BALE'S WIDTH WIDE. MAKE SURE THAT THE TRENCH IS EXCAVATED ALONG A SINGLE CONTOUR. WHEN PRACTICABLE, SLOPE BARRIERS SHOULD BE PLACED ALONG CONTOURS TO AVOID A CONCENTRATION OF FLOW. PLACE THE SOIL ON THE UPSLOPE SIDE OF THE TRENCH FOR LATER USE. PLACE THE BALES IN THE TRENCH, MAKING SURE THAT THEY ARE BUTTED TIGHTLY. TWO STAKES SHOULD BE DRIVEN THROUGH EACH BALE ALONG THE CENTERLINE OF THE DITCH CHECK, APPROXIMATELY 6" TO 8" IN FROM THE BALE ENDS. STAKES SHOULD BE DRIVEN AT LEAST 12" INTO THE GROUND. ONCE ALL THE BALES HAVE BEEN INSTALLED AND ANCHORED, PLACE THE EXCAVATED SOIL AGAINST THE UPSLOPE SIDE OF THE CHECK AND COMPACT IT. THE COMPACTED SOIL SHOULD BE NO MORE THAN 3" TO 4" DEEP.

LIST OF COMMON PLACEMENT/INSTALLATION MISTAKES TO AVOID:

WHEN PRACTICAL, DO NOT PLACE BALE SLOPE BARRIERS ACROSS CONTOURS. SLOPE BARRIERS SHOULD BE PLACED ALONG CONTOURS TO AVOID A CONCENTRATION OF FLOW. CONCENTRATED FLOW OVER A SLOPE BARRIER CREATES A SCOUR HOLE ON THE DOWNSLOPE SIDE OF THE BARRIER. THE SCOUR HOLE EVENTUALLY UNDERMINES THE BALES AND THE BARRIER FAILS. DO NOT PLACE BALE SLOPE BARRIERS IN AREAS WITH SHALLOW SOILS UNDERLAIN BY ROCK. IF THE BARRIER IS NOT ANCHORED SUFFICIENTLY, IT WILL WASH OUT. BALE SLOPE BARRIERS MUST BE DUG INTO THE GROUND. BALES AT GROUND LEVEL DO NOT WORK BECAUSE THEY ALLOW WATER TO FLOW UNDER THE BARRIER.

INSPECTION AND MAINTENANCE:

BALE SLOPE BARRIERS SHOULD BE INSPECTED EVERY 7 DAYS AND WITHIN 24 HOURS OF A RAINFALL OF 1/2" OR MORE. THE FOLLOWING IS A LIST OF QUESTIONS THAT SHOULD BE ADDRESSED DURING EACH INSPECTION:

- ARE THERE ANY POINTS ALONG THE SLOPE BARRIER WHERE WATER IS CONCENTRATING?
- DOES WATER FLOW UNDER THE SLOPE BARRIER?
- DOES WATER FLOW THROUGH SPACES BETWEEN ABUTTING BALES?
- ARE ANY BALES DISLODGED?
- ARE BALES DECOMPOSING DUE TO AGE AND/OR WATER DAMAGE?
- DOES SEDIMENT NEED TO BE REMOVED FROM BEHIND THE SLOPE BARRIER?

REVISION DATE: MAY 2013



CITY OF WICHITA

PUBLIC WORKS & UTILITIES
ENGINEERING DIVISION

STRAW BALE DITCH CHECK AND BARRIER DETAILS

CITY ENGINEER
GARY JANZEN, P.E.

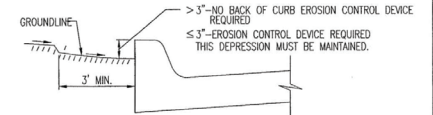
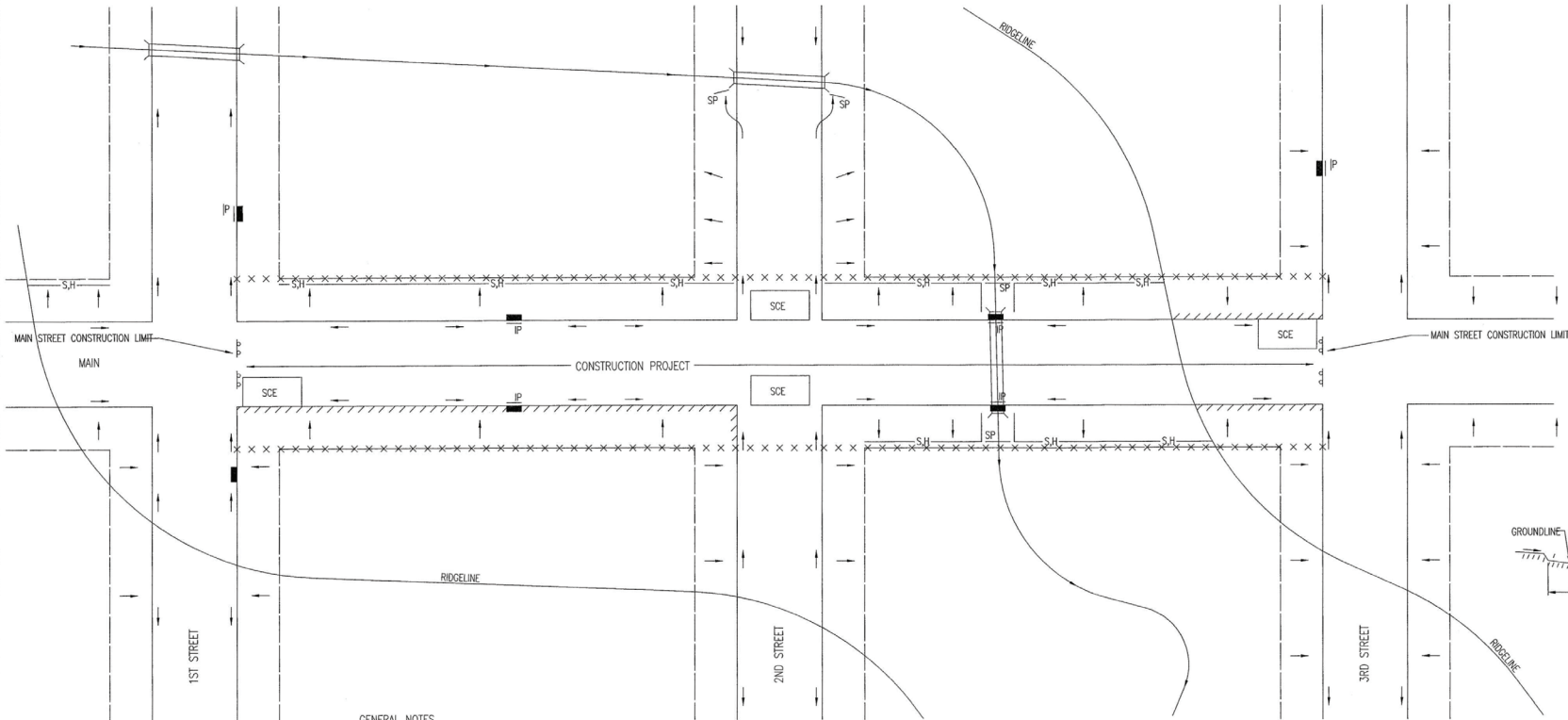
PROJECT NUMBER: _____ DCA NUMBER: _____ DATE: _____

CITY ENGINEER'S OFFICE
CITY HALL - SEVENTH FLOOR
455 NORTH MAIN STREET
WICHITA, KANSAS 67202-1620
(316) 268-4501

SHEET
16 of 26

GENERAL NOTES

1. THIS SHEET IS INTENDED TO PROVIDE GUIDELINES AS TO WHAT TYPES OF EROSION CONTROL DEVICES WILL BE INSTALLED DURING THE CONSTRUCTION PROCESS. CONTRACTORS ARE EXPECTED TO BID PROJECTS ACCORDINGLY.
2. EROSION CONTROL DEVICES MUST BE MAINTAINED BY THE CONTRACTOR THROUGHOUT THE CONSTRUCTION PROCESS AND UNTIL THE DISTURBED EARTH IS RESTABILIZED.
3. IF THE PROJECT WILL DISTURB 1 ACRE OR MORE, A FEDERAL/STATE NPDES STORMWATER PERMIT IS REQUIRED. A DETAILED STORMWATER POLLUTION PREVENTION PLAN IS REQUIRED. THE EROSION CONTROL DEVICES SHOWN ON THIS SHEET ARE CONSIDERED TO BE THE MINIMUM TO BE SHOWN IN THE POLLUTION PREVENTION PLAN.
4. FOR PROJECTS DISTURBING LESS THAN 1 ACRE, CONTRACTORS ARE ENCOURAGED TO PREPARE STORMWATER POLLUTION PREVENTION PLANS PRIOR TO CONSTRUCTION. EROSION CONTROL DEVICES MUST BE USED ON ALL PROJECTS.
5. FAILURE TO USE AND MAINTAIN EROSION CONTROL DEVICES IS A VIOLATION OF SECTION 16.32 OF THE CITY CODE AND WILL SUBJECT THE CONTRACTOR TO THE PENALTIES PROVIDED FOR THEREIN.
6. THE APPLICATION OF EROSION CONTROL DEVICES SHOWN ON THIS SHEET IS FOR SITUATIONS NORMALLY ENCOUNTERED. FROM TIME TO TIME, SITUATIONS WILL ARISE THAT MAY REQUIRE A DIFFERENT DEVICE OTHER THAN THOSE SHOWN. EROSION CONTROL DEVICES, OTHER THAN THOSE SHOWN, MAY BE UTILIZED AS LONG AS THEY ARE EFFECTIVE AND MAINTAINED.



CURB BACKFILL DETAIL
 THIS IS A TEMPORARY MEASURE ONLY, WHEN APPROVED BY THE PROJECT ENGINEER. THE DIRT GRADE BEHIND THE CURB SHALL BE BROUGHT TO THE TOP OF CURB, WITH TEMPORARY EROSION CONTROL MAT OR PERMANENT VEGETATION PLACED, PRIOR TO THE COMPLETION OF ALL PROJECTS.

GENERAL NOTES

1. THE INTENT OF ALL EROSION CONTROL DEVICES IS TO KEEP ALL SEDIMENT CONFINED TO THE CONSTRUCTION SITE, AND OUT OF ALL UNDERGROUND PIPES, DITCHES, LAKES, AND OTHER DRAINAGE FACILITIES, AND OFF OF STREETS.
2. THE POINT OF COMPLIANCE IS GENERALLY THE RIGHT-OF-WAY LINES WITHIN THE LIMITS OF CONSTRUCTION.
3. EROSION CONTROL DEVICES WILL BE REQUIRED AT ALL POINTS ALONG THE PROJECT WHERE DISTURBED EARTH CAN DRAIN ONTO PRIVATE PROPERTY.
4. INLET PROTECTION DEVICES WILL BE REQUIRED WHEREVER WATER CAN DRAIN OFF THE PROJECT SITE INTO AN INLET, INCLUDING ANY SIDE STREET INLETS.
5. EROSION CONTROL DEVICES SHALL BE INSTALLED AT CREEK CROSSINGS SO AS TO PREVENT SEDIMENT FROM ENTERING THEREIN.
6. STABILIZED CONSTRUCTION ENTRANCES SHALL BE PROVIDED, AS NEEDED, TO PREVENT MUD FROM TRACKING ONTO STREETS NOT UNDER CONSTRUCTION AND ON STREETS WITHIN THE PROJECT LIMITS IF TRAFFIC IS BEING MAINTAINED THROUGH THE PROJECT.
7. ANY MUD TRACKED ONTO STREETS MUST BE REMOVED AT THE END OF EACH WORK DAY.
8. THE CONTRACTOR WILL BE REQUIRED TO PLACE EROSION CONTROL DEVICES BACK OF CURB, WHENEVER WATER CAN DRAIN OVER CURB, TO KEEP ERODED SOIL OUT OF THE GUTTERLINES, IN ACCORDANCE WITH THE FOLLOWING:
 - A. THE DEVICE REQUIRED WILL BE APPROVED EROSION CONTROL MAT LISTED ON THE CITY'S APPROVED MATERIAL LIST. SAID BLANKET SHALL BE PLACED OVER THE APPROPRIATE SEED AND FERTILIZER, AS SPECIFIED IN THE PROJECT SPECIFICATIONS. (SEE SOIL EROSION BMPs - BACK OF CURB SEDIMENT BARRIER DETAILS)
 - B. THIS DEVICE SHALL BE INSTALLED IMMEDIATELY WHENEVER THE CURB IS BACKFILLED TO WITHIN 3" OF THE TOP OF CURB. (SEE CURB BACKFILL DETAIL)
 - C. ADDITIONALLY, OTHER EROSION CONTROL DEVICES (HAY BALES, SILT FENCE, ETC.) WILL BE INSTALLED AT LOCATIONS OF CONCENTRATED FLOW RESULTING IN SEDIMENT OVERRUNNING THE MAT.
 - D. SHOULD THE PROJECT PLANS SPECIFY THAT THE RIGHT-OF-WAY IS TO BE SLOPED, THE EXCELSIOR MAT WILL NOT BE REQUIRED SO LONG AS THE SOD IS PLACED WITHIN 48 HOURS AFTER CURB BACKFILL REACHES A HEIGHT OF 3" OR LESS FROM TOP OF CURB. (SEE CURB BACKFILL DETAIL)

LEGEND

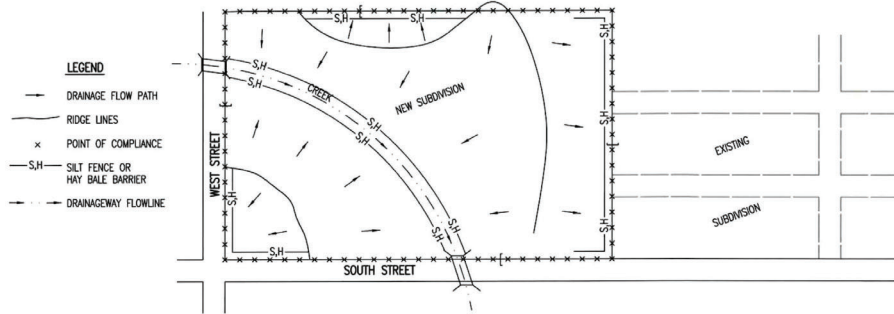
- R-O-W LIMITS
- DRAINAGE FLOW PATH
- × × × × × R/W LIMIT WITHIN CONSTRUCTION LIMIT
- STORM WATER INLETS
- IP INLET PROTECTION
- S.H. SILT FENCE OR HAY BALE BARRIER
- S.P. STREAM PROTECTION
- S.C.E. STABILIZED CONSTRUCTION ENTRANCE
- ////// BACK OF CURB PROTECTION



STREET IMPROVEMENT PROJECTS		
CITY ENGINEER GARY JANZEN, P.E.		
PROJECT NUMBER	OCA NUMBER	DATE
CITY ENGINEER'S OFFICE CITY HALL - SEVENTH FLOOR 455 NORTH MAIN STREET WICHITA, KANSAS 67202-1620 (316) 268-4501		SHEET 17 of 26

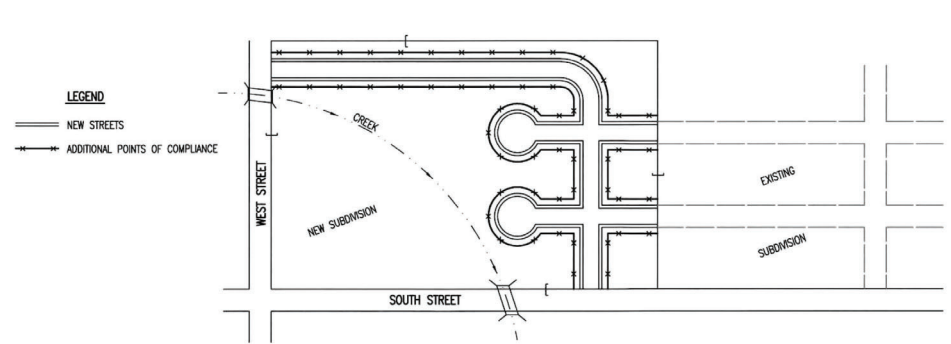
REVISION: JUNE 2015

PHASE 1 – INITIAL EARTHWORK AND UTILITIES (EXCEPT STORM SEWER)



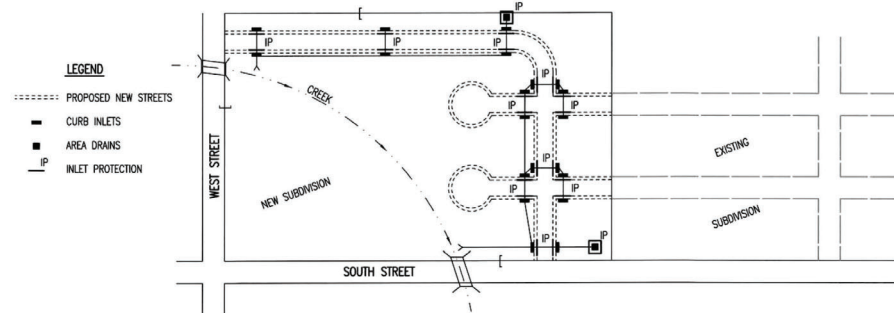
1. DURING THIS PHASE OF SUBDIVISION CONSTRUCTION, THE POINTS OF COMPLIANCE ARE THE PERIMETER BOUNDARIES AND ANY DRAINAGE WAYS OR STORM SEWERS DRAINING THROUGH OR FROM THE SITE. SHOULD LAKES BE CONSTRUCTED WITHIN THE SUBDIVISION THAT WILL DISCHARGE DURING STORMS, THEY ARE ALSO A POINT OF COMPLIANCE.
2. HAY BALES OR SILT FENCE MUST BE CONSTRUCTED ALONG THE PROPERTY LINE WHERE ON SITE WATER CAN DRAIN OFF THE PROPERTY. THESE EROSION CONTROL DEVICES WILL ALSO BE INSTALLED ALONG ANY DRAINAGE DITCH OR LAKE THAT CAN DISCHARGE.
3. SHOULD SILT OR SEDIMENT ENTER THE DITCHES OR STREETS ON THE ADJACENT BOUNDARY STREETS, APPROPRIATE EROSION CONTROL DEVICES WILL BE PLACED WITHIN THE SUBDIVISION TO PREVENT THIS.
4. ANY MUD TRACKED ONTO ADJACENT STREETS WILL BE REMOVED WITHIN 48 HOURS OR BY FRIDAY AT 6:00 PM, WHICHEVER IS EARLIER.
5. CONTRACTORS WORKING WITHIN THE SITE WILL NOT BE REQUIRED TO USE INDIVIDUAL EROSION CONTROL DEVICES AS LONG AS THOSE SPECIFIED ABOVE ARE IN PLACE AND EFFECTIVE. CONTRACTORS WORKING ON THE BOUNDARY LINE STREETS OR ON ADJACENT PROPERTIES TO EXTEND UTILITIES ARE EXPECTED TO USE EROSION CONTROL DEVICES AT THEIR WORK LOCATIONS, AS NEEDED.
6. UTILIZE STABILIZED CONSTRUCTION ENTRANCE AT ENTRANCE AND EXIT ONTO ANY EXISTING PUBLIC STREETS.
7. IF THE INITIAL EARTH WORK AND UTILITIES ARE DONE AS PART OF A PUBLIC IMPROVEMENT PROJECT, THESE EROSION CONTROL DEVICES WILL BE INSTALLED BY THE CONTRACTOR AS SPECIFIED IN THE INDIVIDUAL PROJECT CONTRACTS. THE CONTRACTOR WILL MAINTAIN THE DEVICES UNTIL COMPLETION OF THE CONTRACT, AT WHICH TIME THE DEVELOPER WILL ASSUME MAINTENANCE RESPONSIBILITIES. IF THESE CONTRACTS ARE NOT PUBLIC IMPROVEMENT PROJECTS, THE DEVELOPER WILL BE RESPONSIBLE FOR INSTALLING AND MAINTAINING THESE DEVICES.
8. WITHIN 14 DAYS OF COMPLETION OF EARTHWORK ACTIVITIES IN ANY GIVEN AREA, THAT AREA SHALL BE TEMPORARILY OR PERMANENTLY SEEDED AND MULCHED.

PHASE 3 – STREET CONSTRUCTION



1. DURING THIS PHASE OF SUBDIVISION CONSTRUCTION, NEW STREETS ARE INSTALLED. ALL EROSION CONTROL DEVICES INSTALLED DURING PHASE 1 AND 2 MUST STILL BE MAINTAINED. THE POINT OF COMPLIANCE NOW SHIFTS TO THE BACK OF CURB ALONG EACH STREET.
2. CURB OPENING INLET PROTECTION:
 - A. SLUMP AREAS – INLET PROTECTION SHALL BE PROVIDED WHEN STREET SUBGRADE WORK IS COMPLETED.
 - B. NON-SLUMP LOCATIONS – PROVIDE INLET PROTECTION AS SOON AS BASE COURSE ASPHALT IS INSTALLED, BEFORE THE SURFACE COURSE LIFT.
3. EROSION CONTROL DEVICES WILL BE REQUIRED BACK OF CURB WHEREVER WATER CAN FLOW OVER THE CURB AND THE CURB HAS BEEN BACKFILLED TO WITHIN 3" OR LESS OF THE TOP OF CURB (SEE CURB BACKFILL DETAIL). FOR CURBS NOT YET ENTIRELY BACKFILLED (3" OR MORE BELOW TOP OF CURB), ADDITIONAL DEVICES WILL BE REQUIRED AT POINTS WHERE WATER BREAKS OVER CURB WHICH COULD RESULT IN THE PLACEMENT OF SEDIMENT IN THE GUTTER.
4. SEE DETAIL SHEET FOR BACK OF CURB PROTECTION.
5. THE BACK OF CURB PROTECTION SPECIFIED ON THIS PLAN MAY HAVE TO BE SUPPLEMENTED WITH HAY BALE OR SILT FENCE EROSION CONTROL DEVICES AT LOCATIONS WHERE CONCENTRATED FLOW RESULTS IN SEDIMENT BEING CARRIED OVER THE EXCESSOR MATS.
6. THE STREET CONTRACTOR WILL BE RESPONSIBLE FOR INSTALLING BACK OF CURB EROSION CONTROL DEVICES.
7. THE INDIVIDUAL LOT OWNERS WILL BE RESPONSIBLE FOR MAINTAINING THE BACK OF CURB EROSION CONTROL DEVICES IN FRONT OF THEIR LOTS UNTIL SUCH TIME AS ADJACENT DISTURBED EARTH IS STABILIZED WITH GRASS OR SOD.

PHASE 2 – INSTALLATION OF STORM SEWER



1. DURING THIS PHASE OF SUBDIVISION DEVELOPMENT, ALL EROSION CONTROL DEVICES REQUIRED IN PHASE 1 SHALL REMAIN IN PLACE AND BE MAINTAINED.
2. AS NEW STORM SEWERS, WITH INLETS, ARE INSTALLED, THE STORM SEWERS MUST NOW BE PROTECTED SO ALL NEW INLETS BECOME POINTS OF COMPLIANCE.
3. AREA DRAINS – AS SOON AS WATER CAN FLOW INTO THESE DRAINS, HAY BALE OR SILT FENCE PROTECTION WILL BE INSTALLED AROUND THEM.
4. CURB OPENING INLETS – AS SOON AS WATER CAN FLOW INTO THESE DRAINS, INLET PROTECTION DEVICES MUST BE INSTALLED. IF WATER CANNOT FLOW INTO CURB INLETS UNTIL STREET CONSTRUCTION IS COMPLETE, THEN STREET CONTRACTOR WILL INSTALL INLET PROTECTION. SEE PHASE 3 – STREET CONSTRUCTION.
5. THE STORM SEWER CONTRACTOR WILL BE RESPONSIBLE FOR INSTALLING THESE DEVICES.
6. THE SUBDIVISION DEVELOPER WILL MAINTAIN THESE EROSION CONTROL DEVICES ONCE INSTALLED.
7. ALL DISTURBED GROUND WILL BE FINAL GRADED AND TEMPORARILY OR PERMANENTLY SEEDED WITHIN 14 DAYS IF COMPLETION OF WORK IN ANY GIVEN PART OF THE SUBDIVISION.
8. ONCE ALL DISTURBED GROUND DRAINING TO AN INLET HAS BEEN RESTABILIZED WITH GRASS OR SOD, THE SUBDIVISION DEVELOPER WILL BE RESPONSIBLE FOR PERMANENTLY REMOVING THE INLET PROTECTION.

GENERAL NOTES

1. THE INTENT OF ALL EROSION CONTROL DEVICES IS TO PREVENT ERODED SOIL FROM ENTERING DITCHES, STORM SEWERS, LAKES, STREETS OR ANY OTHER OTHER DRAINAGE FEATURE.
2. THIS SHEET IS INTENDED TO PROVIDE GUIDELINES AS TO WHAT TYPE OF EROSION CONTROL DEVICES WILL BE INSTALLED DURING THE CONSTRUCTION PROCESS. CONTRACTORS ARE EXPECTED TO BID PROJECTS ACCORDINGLY.
3. EROSION CONTROL DEVICES SHALL BE MAINTAINED DURING THE CONSTRUCTION PROCESS TO REMAIN EFFECTIVE. MAINTENANCE SHALL BE AS INDICATED ON SOIL EROSION EMP'S DETAIL SHEETS.
4. PERSONS DESTROYING EROSION CONTROL DEVICES SHALL BE RESPONSIBLE FOR IMMEDIATELY REPAIRING THEM OR INSTALLING SUITABLE REPLACEMENT DEVICES.
5. THE DEVELOPMENT OF ANY SUBDIVISION THAT DISTURBS 1 ACRE OR MORE WILL REQUIRE A FEDERAL/STATE NPDES STORMWATER PERMIT. THE PREPARATION OF A STORMWATER POLLUTION PREVENTION PLAN IS REQUIRED. EROSION CONTROL DEVICES ARE REQUIRED. THE DETAILS SHOWN ON THIS SHEET ARE THE MINIMUM STANDARDS TO BE SHOWN ON POLLUTION PREVENTION PLANS.
6. FOR SUBDIVISIONS SMALLER THAN 1 ACRE, SOIL EROSION DEVICES ARE REQUIRED. ALSO, DEVELOPERS AND CONTRACTORS ARE ENCOURAGED TO DEVELOP POLLUTION PREVENTION PLANS FOR EACH PROJECT PRIOR TO CONSTRUCTION.
7. FAILURE TO USE AND MAINTAIN SOIL EROSION DEVICES IS A VIOLATION OF SECTION 16.32 OF THE CITY CODE AND WILL SUBJECT THE SUBDIVISION DEVELOPER AND CONTRACTORS TO THE PENALTIES PROVIDED THEREIN.
8. THE APPLICATION OF EROSION CONTROL DEVICES SHOWN ON THIS SHEET IS FOR SITUATIONS NORMALLY ENCOUNTERED. FROM TIME TO TIME, SITUATIONS WILL ARISE THAT MAY REQUIRE DEVICES OTHER THAN THAT SHOWN. EROSION CONTROL DEVICES, OTHER THAN THOSE SHOWN, MAY BE UTILIZED SO LONG AS THEY ARE EFFECTIVE AND MAINTAINED.
9. A STABILIZED EARTH SURFACE IS DEFINED AS ONE THAT IS HARD SURFACED WITH CONCRETE, ASPHALT, OR THE LIKE, OR ONE ON WHICH 70% OF THE GRASS HAS GERMINATED ON THE ENTIRE SURFACE.

SEE DETAIL SHEET FOR BACK OF CURB PROTECTION DETAIL



CURB BACKFILL DETAIL (STREET CONSTRUCTION ONLY)

THIS IS A TEMPORARY MEASURE ONLY. WHEN APPROVED BY THE PROJECT ENGINEER, THE DIRT GRADE BEHIND THE CURB SHALL BE BROUGHT TO THE TOP OF CURB, WITH TEMPORARY EROSION CONTROL MAT OR PERMANENT VEGETATION PLACED, PRIOR TO THE COMPLETION OF ALL PROJECTS.

REVISION DATE: MAY 2013



CITY OF WICHITA
PUBLIC WORKS & UTILITIES
ENGINEERING DIVISION

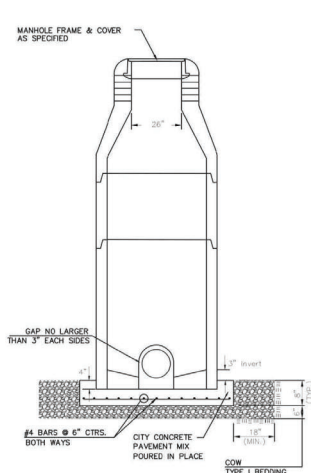
SUBDIVISION DEVELOPMENT PROCESS

CITY ENGINEER
GARY JANZEN, P.E.

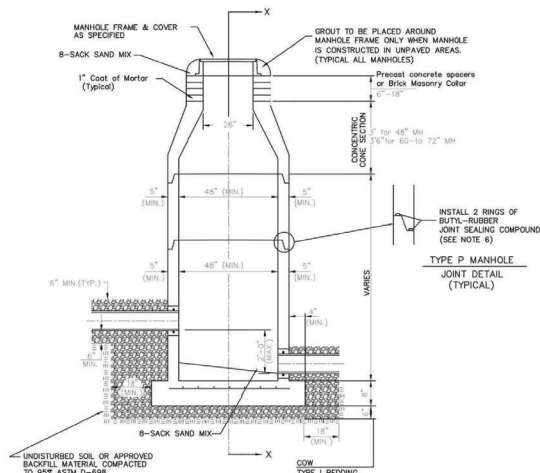
PROJECT NUMBER	OCA NUMBER	DATE
----------------	------------	------

CITY ENGINEER'S OFFICE
CITY HALL – SEVENTH FLOOR
455 NORTH MAIN STREET
WICHITA, KANSAS 67202-1620
(316) 268-4501

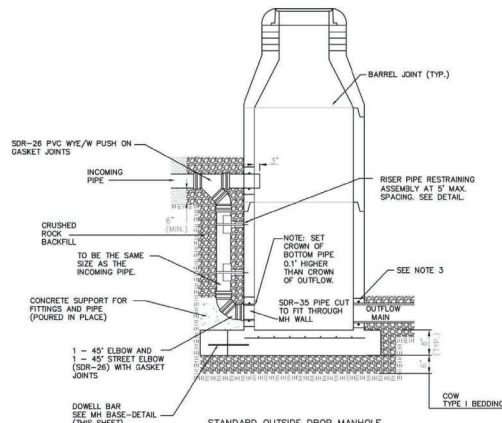
SHEET
18 of 26



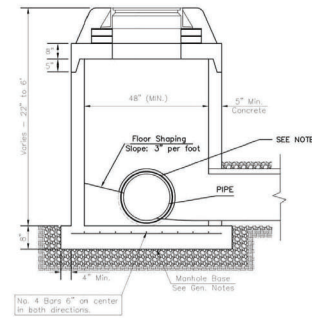
DOG HOUSE MANHOLE
(OVER EXISTING PIPE)
Not to Scale



STANDARD MANHOLE
Not to Scale



STANDARD OUTSIDE DROP MANHOLE
Not to Scale

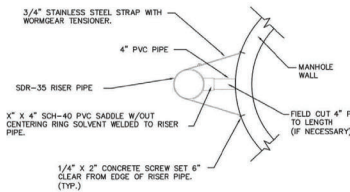


SHALLOW MANHOLE
Not to Scale

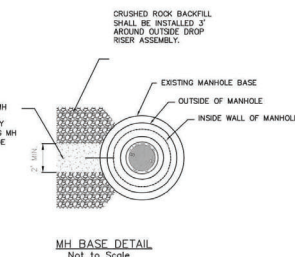
 = COW TYPE I BEDDING
 = UNDISTURBED SOIL

PRECAST MANHOLE GENERAL NOTES

- ALL PRECAST CONCRETE MANHOLE SECTIONS SHALL CONFORM TO THE LATEST REVISIONS OF A.S.T.M. C478 AS MODIFIED BY THE SPECIFICATIONS.
- NON-SHRINK GROUT SHALL BE NON-METALLIC TYPE.
- APPROVED FLEXIBLE WATERSTOP SHALL BE INSTALLED TO JOIN THE SEWER PIPE TO THE MANHOLE WALL. THE SEWER PIPE SHALL BE SUPPORTED WITH CRUSHED ROCK A MINIMUM OF 3 FEET FROM THE MANHOLE WALL AND TO THE FIRST JOINT FOR V.C.P. SUCH THAT THE JOINT REMAINS FLEXIBLE.
- ALL INSIDE SURFACES OF THE CONCRETE MANHOLE WHICH WOULD BE EXPOSED TO SEWER GAS SHALL BE COATED PER SECTION 804.4 OF STANDARD SPECIFICATIONS.
- EXTERIOR MANHOLE WALLS SHALL BE COATED PER SECTION 804.4 OF STANDARD SPECIFICATIONS.
- JOINT SEALING COMPOUND SHALL BE PER 804.4 OF STANDARD SPECIFICATIONS.
- ALL MANHOLE SECTION JOINTS THAT WILL BE IN GROUNDWATER OR GREATER THAN 12" DEEP SHALL BE WRAPPED WITH AN EXTERNAL JOINT SEAL PER SECTION 804.4 OF STANDARD SPECIFICATIONS, AS INDICATED BY THE PLANS.
- PRECAST MANHOLES SHALL BE SET AT LEAST 4 INCHES INTO THE MANHOLE BASE FOR DOG HOUSE MANHOLES.
- TOP OF MANHOLE FLOOR SLAB SHALL BE AT LEAST 3 INCHES BELOW THE FLOW LINE OF THE OUTLET PIPE TO INSURE SUFFICIENT MINIMUM THICKNESS OF SHARPED INVERT.
- LIFTING HOLES SHALL BE FILLED WITH NON-SHRINK GROUT AND THE INTERIOR SURFACE COATED AS SPECIFIED.
- MORTAR USED IN MASONRY CONSTRUCTION SHALL CONTAIN 8 SACKS OF CEMENT PER CUBIC YARD. CONCRETE USED IN MANHOLE BASES SHALL CONFORM TO THE REQUIREMENTS OF CONCRETE FOR CONCRETE PAVEMENT CONSTRUCTION AS SPECIFIED IN THE CITY STANDARD PAVING SPECIFICATIONS USING CITY CONCRETE PAVEMENT MIX WITHOUT AIR ENTRAINING ADMIXTURE. MORTAR SHALL BE PLACED AROUND THE MANHOLE RING AS SHOWN ON THE DRAWINGS WHEN MANHOLES ARE CONSTRUCTED IN UNPAVED AREAS. COMPLETED MANHOLE SHALL BE WITHOUT LEAKS AND WATER TIGHT.
- REINFORCING STEEL SHALL BE INSTALLED IN THE MANHOLE BASES AND SHALL CONSIST OF NO.4 BARS PLACED ON 6" CENTERS IN BOTH DIRECTIONS. THE MANHOLE BASE REINFORCEMENT SHALL BE PLACED AT LEAST 3" ABOVE THE BOTTOM OF THE MANHOLE BASE. ALL COSTS FOR FURNISHING AND INSTALLING REINFORCING STEEL SHALL BE INCLUDED IN THE UNIT PRICE BID FOR THE MANHOLE.
- WALL THICKNESS SHALL BE 1" GREATER THAN MANHOLE DIAMETER IN FEET.
- OPENINGS SHALL BE CORE DRILLED INTO THE MANHOLE WALL WHEN OUTSIDE DROPS ARE CONSTRUCTED ON EXISTING MANHOLES. SUCH OPENINGS DRILLED INTO EXISTING MANHOLES SHALL BE AS SMALL AS PRACTICAL TO FACILITATE INSTALLING AND GROUTING THE NEW PIPE IN PLACE. WATERSTOP GASKETS SHALL BE USED WITH P.V.C. PIPE. THE NEW PIPE SHALL BE GROUTED INTO THE OPENING USING AN APPROVED NONSHRINK GROUT FOR THE FULL MANHOLE WALL THICKNESS. THE EXTERIOR OF THE COMPLETED CONNECTION SHALL BE SEALED WITH AN APPROVED BITUMINOUS COATING SUCH THAT THE CONNECTION WILL BE WATER TIGHT. FLOOR OF MANHOLE SHALL BE MODIFIED TO FORM NEW FLOW CHANNEL FOR THE NEW CONNECTION AS INDICATED BY THE DRAWING. THIS WORK, INCLUDING MODIFICATION OF MANHOLE FLOOR, SHALL BE PAID FOR AT THE UNIT PRICE BID FOR OUTSIDE DROP STACK CONSTRUCTED ON EXISTING MANHOLE.
- THE FLOORS OF ALL MANHOLES SHALL BE SHAPED WITH FLOW CHANNELS SUCH THAT THE MANHOLES WILL BE SELF CLEANING AND FREE OF AREAS WHERE SOLIDS COULD BE DEPOSITED AS SEWAGE FLOWS THROUGH THE MANHOLE FROM ALL INLET PIPES TO THE OUTLET PIPE. FLOW CHANNELS SHALL BE FORMED TO MATCH THE BOTTOM HALVES OF THE INFLOWING PIPES AND THE OUTFLOWING PIPE AS SHOWN BY THE DRAWINGS. MANHOLE FLOORS SHALL HAVE SLOPES OF 3 INCHES PER FOOT IN THE AREAS OUTSIDE OF THE FLOW CHANNELS SLOPED TOWARD THE FLOW CHANNELS. PIPES LAD THROUGH MANHOLES SHALL HAVE THE TOP HALF REMOVED TO NEAT LINES FOR THE FULL INSIDE DIAMETER OF THE MANHOLE. MANHOLE FLOORS SHALL THEN BE SHAPED AROUND THE BOTTOM HALF OF THE PIPE WHICH FORMS THE FLOW CHANNEL.
- MANHOLE COVER CASTINGS AND MANHOLE FRAME CASTINGS SHALL CONFORM TO THE REQUIREMENTS AS INDICATED IN THE STANDARD SPECIFICATIONS AND AS SHOWN IN THE STANDARD DETAIL DRAWING.
- THE VERTICAL DROP IN STANDARD MANHOLES SHALL NOT EXCEED 3" REGARDLESS OF PIPE SIZE. THE CROWNS OF INFLOWING PIPES SHALL NEVER BE SET LOWER THAN THE CROWN OF THE OUTFLOWING PIPE.
- STANDARD MANHOLES SHALL BE BID AS STANDARD MANHOLES FOR THE TYPE AND DIAMETER INDICATED. OUTSIDE DROP MANHOLES SHALL BE BID AS STANDARD OUTSIDE DROP MANHOLES FOR THE TYPE AND DIAMETER INDICATED. ALL MANHOLE DIAMETERS WILL BE 4" UNLESS INDICATED OTHERWISE.
- PRECAST CONCRETE SPACERS OR BRICK MASONRY COLLAR SHALL BE INSTALLED BETWEEN THE CAST IRON FRAME AND THE CONCENTRIC CONE. THE COLLAR WILL HAVE 8" WALLS AND A VERTICAL HEIGHT OF 6" MINIMUM AND 18" MAXIMUM. A 1" COAT OF MORTAR WILL BE PLASTERED ON THE OUTSIDE OF THE COLLAR. THE USE OF PRE-CAST CONCRETE SPACERS FOR MANHOLE TOP ADJUSTMENT IS ALSO ALLOWED.
- THE FULL DIAMETER OF THE MANHOLE SHALL EXTEND THE ENTIRE DEPTH OF THE MANHOLE TO THE CONE SECTION. NO REDUCTION IN MANHOLE DIAMETER WILL BE ALLOWED.




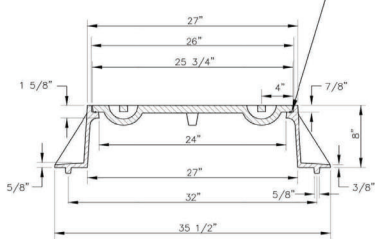
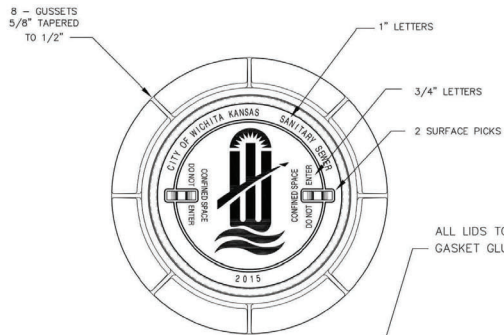
RISER PIPE RESTRAINING ASSEMBLY
Not to Scale



MH BASE DETAIL
Not to Scale

SANITARY SEWER MANHOLE DIAMETERS		
DIAMETER	DEPTH	PIPE SIZE
4"	0'-15"	8"-18"
5"	>15'-30"	21"-30"
6"	>30"	36"-60"

REVISION NOVEMBER 2019	RISER PIPE RESTRAINING ASSEMBLY REVISED ON MANHOLE DRAWING
	
PRECAST SANITARY SEWER MANHOLE	
CITY ENGINEER GARY JANZEN, P.E.	
PROJECT NUMBER	OCA NUMBER
DATE	
CITY ENGINEER'S OFFICE CITY HALL - SEVENTH FLOOR 455 NORTH MAIN STREET WICHITA, KANSAS 67202-1620 (316) 268-4501	
SHEET 19 of 26	

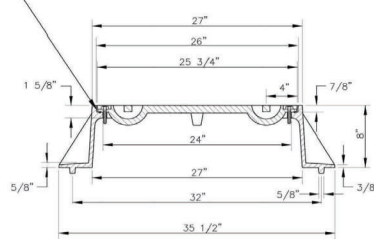
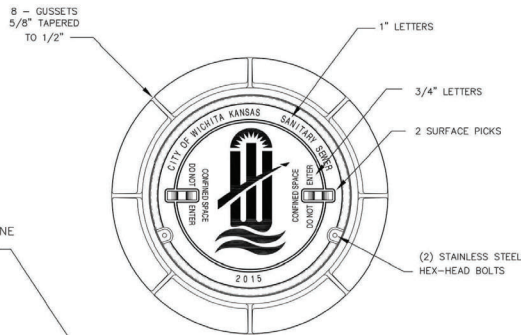


STANDARD MANHOLE FRAME & COVER

DEETER #1261 OR EJIW #1936-Z1

NOTE:

1. FURNISHED WITH MACHINED HORIZONTAL BEARING SURFACE.



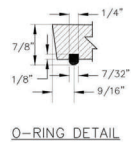
BOLT DOWN MANHOLE FRAME & COVER

DEETER #1261 OR EJIW #1936-Z1

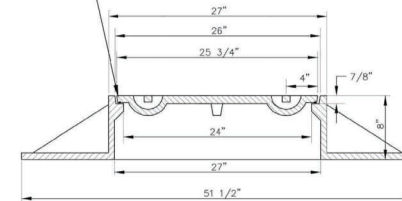
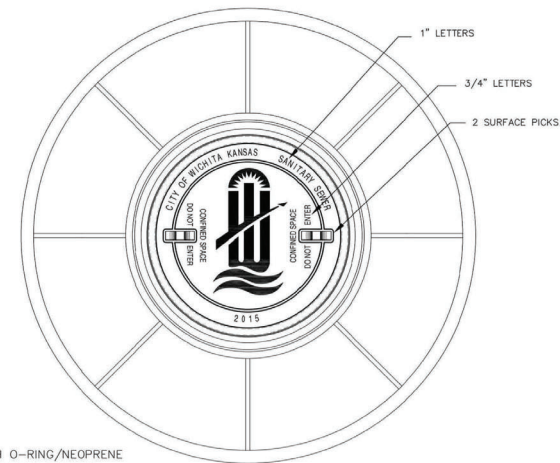
NOTE:

1. FURNISHED WITH MACHINED HORIZONTAL BEARING SURFACE.

ALL LIDS TO BE FURNISHED WITH O-RING/NEOPRENE GASKET GLUED IN THE COVER BEARING SURFACE.



ALL LIDS TO BE FURNISHED WITH O-RING/NEOPRENE GASKET GLUED IN THE COVER BEARING SURFACE.



WIDE FLANGED FRAME & COVER

DEETER #1261A

NOTE:

1. FURNISHED WITH MACHINED HORIZONTAL BEARING SURFACE.

GENERAL NOTES

1. MANHOLE CASTINGS SHALL BE MANUFACTURED USING GOOD QUALITY GRAY IRON CONFORMING TO CLASS 30 OF A.S.T.M. DESIGNATION A-48. DIMENSIONS SHOWN ON THE DETAILED DRAWINGS SHALL BE CONSIDERED AS MINIMUM REQUIREMENTS AND ANY DEVIATIONS FROM THE DIMENSIONS SHOWN MUST BE SPECIFICALLY APPROVED. THE FINISHED CASTINGS SHALL BE OF UNIFORM QUALITY, FREE FROM BLOWHOLES, POROSITY, HARD SPOTS, SHRINKAGE DISTORTIONS OR OTHER DEFECTS.
2. MANHOLE CASTINGS SHALL BE MANUFACTURED SUCH THAT A COVER MANUFACTURED BY ANY ONE FOUNDRY WILL FIT INTERCHANGEABLY INTO A FRAME MANUFACTURED BY ANOTHER FOUNDRY AND STILL MEET ALLOWABLE CLEARANCES AND NON-ROCKING REQUIREMENTS. THIS WILL REQUIRE MANUFACTURING OF THE MATCHING FACES ON THE COVER AND THE FRAME TO CLOSE TOLERANCES.
3. THE OUTSIDE CIRCUMFERENCE OF THE VERTICAL FACE OF THE COVER AND THE INSIDE CIRCUMFERENCE OF THE VERTICAL FACE IN THE FRAME RECESS SHALL BE MANUFACTURED TO TOLERANCES SUCH THAT THE CLEARANCE BETWEEN THE COVER AND FRAME WILL NOT EXCEED 1/8" AT ANY POINT AROUND THE CIRCUMFERENCE OF THE COVER. THE SEATING SURFACES BETWEEN THE COVER AND FRAME SHALL BE MACHINED SUCH THAT THESE SEATING SURFACES SHALL MAKE FULL CONTACT FOR THEIR FULL CIRCUMFERENCE TO PRECLUDE THE COVER FROM ROCKING IN THE FRAME.
4. THE MANHOLE FRAME AND COVER SHALL BE MARKED WITH LETTERING INDICATING THE NAME OF THE MANUFACTURER AND THE YEAR WHEN THE COVER OR FRAME WAS CAST. THE COVER SHALL BE FURTHER IDENTIFIED WITH REGARDS TO OWNERSHIP USING LETTERS AT LEAST 1" IN HEIGHT. THIS IDENTIFICATION SHALL BE "CITY OF WICHITA SANITARY SEWER". THE TOP SURFACE OF THE COVER SHALL BE MANUFACTURED IN WITH CITY OF WICHITA DESIGN AS INDICATED ON THE DRAWINGS. SMOOTH BLOCKOUTS SHALL BE UTILIZED TO HIGHLIGHT THE LETTERING ON THE COVER SURFACE. THE TOTAL AREA OF SMOOTH SURFACE BLOCKOUT SHALL NOT EXCEED THE AREA AS INDICATED ON THE DRAWING. POSITIONING OF SMOOTH BLOCKOUTS AND LETTERING MAY VARY FROM THAT SHOWN ON THE DETAILED DRAWING.

REVISED: MARCH 2016

CITY OF WICHITA
PUBLIC WORKS & UTILITIES
ENGINEERING DIVISION

**MANHOLE
FRAME AND COVER
(SANITARY SEWER)**

CITY ENGINEER
GARY JANZEN, P.E.

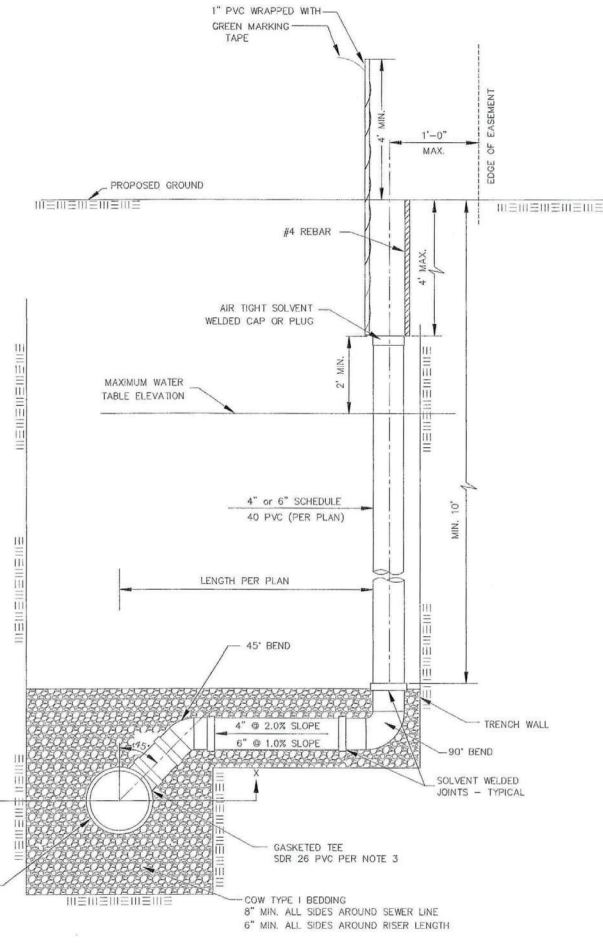
PROJECT NUMBER	OGA NUMBER	DATE
CITY ENGINEER'S OFFICE		SHEET
CITY HALL - SEVENTH FLOOR 455 NORTH MAIN STREET WICHITA, KANSAS 67202-1620 (316) 268-4501		20 of 26

GENERAL NOTES

1. APPLICATION. Risers shall be installed to serve all lots or tracts where the sanitary sewer main is below the water table, where the sanitary sewer main depth is greater than 12' below the proposed ground elevation, where the main is adjacent to a pond or wherever service lines would have to cross under storm sewer pipe. Installation of risers because of field conditions shall be as approved by the City Engineer. The location of the risers to serve developed property shall be approved by the property owner and the Construction Engineer.
2. MANHOLE STUB RISERS. Manhole stub risers be installed in manholes where locations of manholes will provide satisfactory service connection as determined by the Construction Engineer. The vertical distance between the flowline of the manhole stub and the flowline of the sanitary sewer line out of the manhole shall not exceed 2'. Risers shall be utilized at manholes as indicated in Note 1. Manhole stub riser shall be set such that the top of the stub is not lower than the top of the sanitary sewer line.
3. SIZING. Risers shall be sized according to the plans and riser table where risers are indicated by the plans. Where risers are required because of field conditions, the risers shall be 6" diameter for commercial or industrial properties and 4" or 6" diameter for residential properties, based on lot size and sanitary sewer main depth. Sizing of risers shall be approved by the construction Engineer prior to installation.
4. RISER MATERIAL. Risers shall be constructed of Schedule 40 PVC Pipe, meeting the requirement of the latest revision of A.S.T.M. All pipe joints shall be solvent welded. Full body tee shall be SDR 26 PVC pipe.
5. ROCK ENCASUREMENT. Riser connection to clay pipe sanitary sewers shall be rock encased both ways from the riser centerline. The rock encasement shall extend three feet from the riser centerline or stop at the first sanitary sewer pipe joint within three feet of the riser centerline. Riser connections to PVC Sanitary sewer mains shall be rock encased one foot each way from the riser centerline. Crushed rock shall conform to ASTM C-33, Gradation No. 57, and shall meet all requirements for Portland Cement Concrete pavement Coarse Aggregate, Section 406.2, City of Wichita Standard Specifications.
6. BEDDING. Beyond the limits of the rock encasement, bedding around the sanitary sewer riser shall be compacted Pipe Bedding Type 1 or 2. The bedding shall be placed and compacted from the depth of the sanitary sewer main to the top of the sanitary sewer riser pipe. Compacted Pipe Bedding Type 1 or 2 shall be required for all risers whether constructed in vertical wall or sloped wall trenches. Bedding material and construction practices shall be approved by the Construction Engineer prior to installation.
7. SUPPORT OF RISERS. Sanitary sewer riser pipe shall be supported during trench backfill. The riser pipe shall be held in a vertical position at all times until trench backfill and compaction has been completed. Contractor's methods for supporting and back filling the riser pipe shall be approved by the Construction Engineer.
8. PLUGGING. The ends of the riser pipes and manhole stubs shall be plugged using an airtight solvent welded cap or plug. Cap or plug fittings shall be approved by the Construction Engineer prior to installation. Caps or plugs which do not provide an airtight seal will not be accepted.
9. TOP OF THE RISER PIPE. The top elevation of the sanitary sewer riser pipe shall be built per plan elevations, unless otherwise directed by the Construction Engineer, where riser elevations are not shown on the plans, the top of the risers shall be set at an elevation four feet below the proposed ground surface. If ground water is encountered, the top of the riser pipe shall be set at an elevation 2' (min.) above the maximum water table elevation, regardless of the riser elevation shown on the plans.
10. MARKING. Locations of the ends of the sanitary sewer riser pipe shall be marked by installing 1" PVC from the top of the riser to a minimum of 4' above the top of finished grade. No. 4 rebar shall be placed centered over the riser from the cap to the existing ground. The 1" PVC pipe shall be wrapped with green colored plastic tape, for the full length above ground surface. The green tape shall be 4 mil Polyethylene film with a minimum width of three inches, specifically manufactured for the purpose of identification of underground sewers.
11. LOCATION MEASURES. The project inspector shall record and document the location of all risers constructed as measured from the nearest manhole, indicate the direction from the manhole, the direction and distance from the main, riser size, and elevation of the top of the riser in tabular format.
12. RISER LOCATION. The riser shall be located per plan if shown. If not shown on the plan, the riser shall be located at the center of the lot, within one foot of the property side of the easement for the lot being served. All riser locations shall be approved by the Construction Engineer prior to installation.
13. PAYMENT. "Riser Assembly, Vertical" shall be paid for at the contract unit price per each, which shall be full compensation for all pipe, fittings, marking tape, length of backfill, labor, site restoration, and any other items necessary to complete the work.

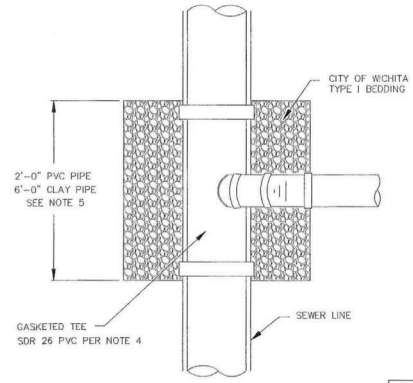
"Riser Assembly, Manhole Stub" shall be paid for at the contract unit price per each, which shall be full compensation for all labor material and incidentals necessary to complete the work including all pipe, fittings, rock encasement, and all other items as required and listed for "Riser Assembly, Vertical"

NOTE: RISER PIPE REQUIREMENTS AT MANHOLE CONNECTION SHALL BE SIMILAR TO THOSE SHOWN ABOVE.



SANITARY SEWER RISER TABLE						FOR INFORMATION ONLY		
NUMBER	TYPE	LOCATION				APPROXIMATE LENGTH		
		LOT NO.	BLOCK NO.	LINE NO.	STATION	DIRECTION	VERTICAL (Ft)	HORIZONTAL (Ft)
1	4" MANHOLE CONNECTION							
2	6" MANHOLE CONNECTION							
3	4" TEE							
4	6" TEE							

NOTE: TABLE FOR REFERENCE ONLY AND SHOULD BE ON EACH APPLICABLE PLAN SHEET.



NOTE: NON SHEAR COUPLING TO BE USED WHEN HOOKING TO CLAY PIPE.

TYPICAL SECTION X-X



REVISED: JULY 2015

CITY OF WICHITA

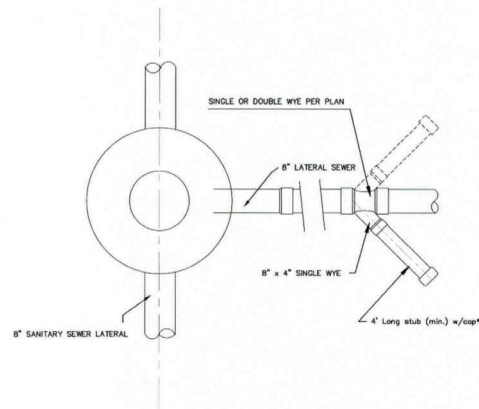
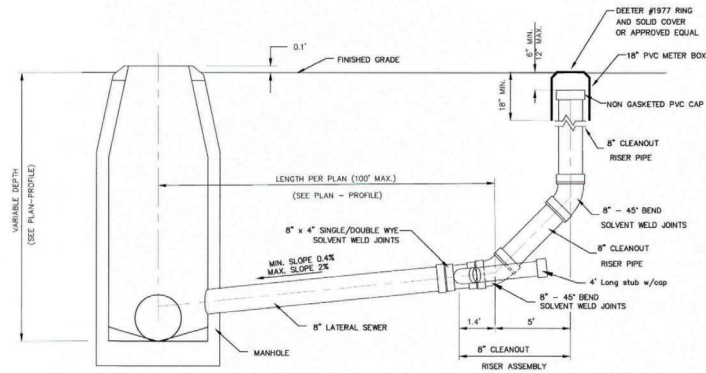
VERTICAL RISER ASSEMBLY SEWER DETAIL

CITY ENGINEER
GARY JANZEN, P.E.

PROJECT NUMBER: _____ OCA NUMBER: _____ DATE: _____

CITY ENGINEER'S OFFICE
CITY HALL - SEVENTH FLOOR
455 NORTH MAIN STREET
WICHITA, KANSAS 67202-1620
(316) 268-4501

21 of 26



CLEANOUT RISER ASSEMBLY DETAIL
W/ MANHOLE CONNECTION


* 4" BRANCH (EACH SIDE) TO SERVE AS 4" STUB TEMPORARY CAP UNTIL SERVICE CONNECTION IS REQUIRED. SINGLE OR DOUBLE WYE TO BE USED WHERE INDICATED ON PLAN. WHEN IN GROUNDWATER 4" STUB NEEDS VERTICAL RISER.

** 6" LATERAL TO BE AIR-TESTED UP TO THE TOP OF PVC PIPE, PER STANDARD SPECIFICATIONS.

GENERAL NOTES:

TAPS: NO TAPS ARE PERMITTED BETWEEN THE MANHOLE/TEE AND THE CLEANOUT RISER.
 BEDDING: BEDDING AROUND THE SANITARY SEWER RISER SHALL BE COMPACTED PIPE BEDDING TYPE 2. (TYPE 1 IN GROUNDWATER).
 MATERIAL: RISER AND LATERALS SHALL BE CONSTRUCTED OF SDR-35 PVC PIPE. TEES SHALL BE SDR-26 PIPE, 4" STUBS SHALL BE SCHEDULE 40.
 CONNECTIONS: ALL SERVICE CONNECTIONS MUST BE MADE TO THE WYE PROVIDED.



 CITY OF WICHITA PUBLIC WORKS & UTILITIES ENGINEERING DIVISION		CLEANOUT RISER ASSEMBLY DETAIL	
		CITY ENGINEER GARY JANZEN, P.E.	
PROJECT NUMBER	OCA NUMBER	DATE	
		12/2011	
CITY ENGINEER'S OFFICE		SHEET	
CITY HALL - SEVENTH FLOOR 455 NORTH MAIN STREET WICHITA, KANSAS 67202-1620 (316) 268-4501		22 of 26	

BENCHMARKS:

CITY OF WICHITA BENCHMARK
DISK AT SOUTH END OF
HUBGUARD ON THE SW COR.
OF R.C.B.C., WEST SIDE OF
ROCK ROAD, 706
NORTH-NORTHWEST OF THE
NORTHWEST CORNER OF LOT
44, BLOCK A, ROCKY FORD
ADDITION.
ELEV. = 1368.14 NAVD88

SQUARE CUT ON TOP OF CURB
NW CORNER OF LOT 14,
BLOCK B, R.F. ADDITION.
ELEV. = 1368.18 NAVD88

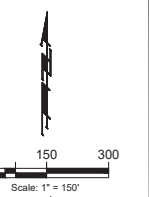
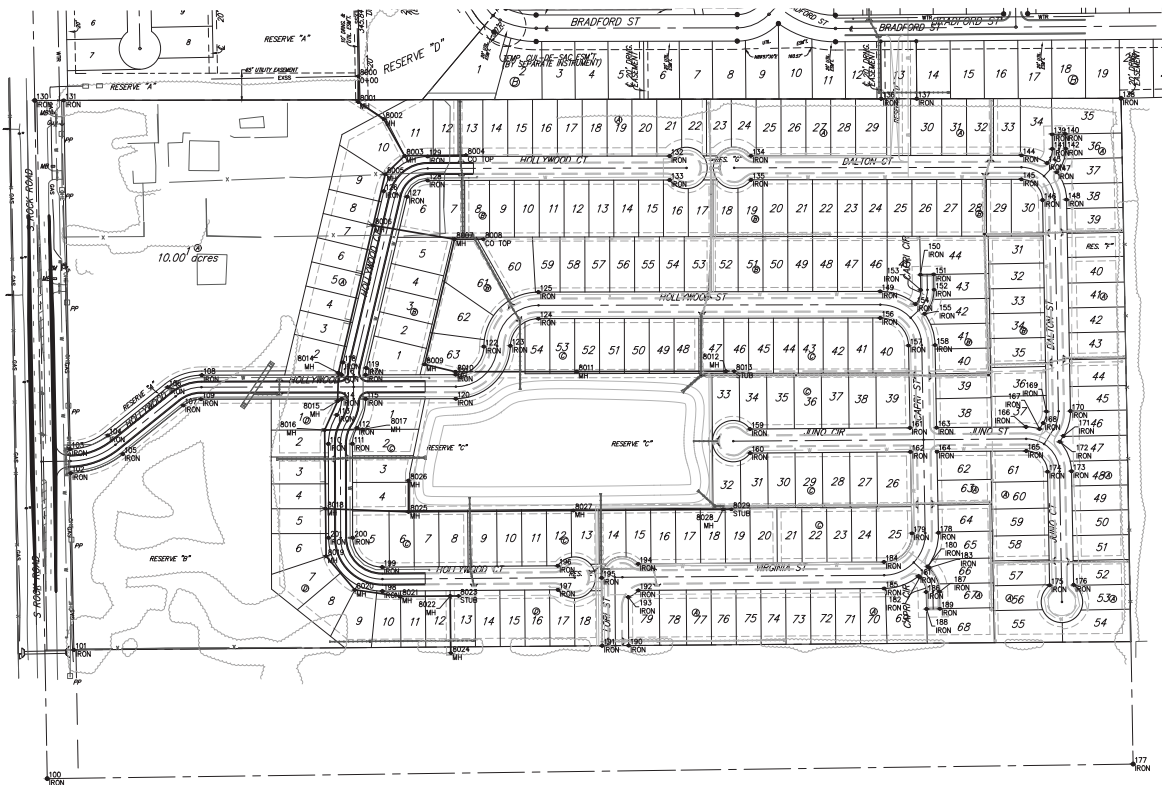
SQUARE CUT ON TOP OF CURB
NW CORNER OF LOT 7, BLOCK
C, R.F. ADDITION.
ELEV. = 1367.26 NAVD88

SQUARE CUT ON TOP OF CURB
NW CORNER OF LOT 42,
BLOCK C, R.F. ADDITION.
ELEV. = 1367.90 NAVD88

Point #	Northing	Easting	Description
8000	1684.864.05	1676.713.74	CHD
8001	1684.862.04	1676.713.87	MH
8002	1684.860.30	1676.716.54	MH
8003	1684.771.96	1676.628.91	MH
8004	1684.773.69	1676.677.04	CO TOP
8005	1684.727.11	1676.783.04	MH
8006	1684.652.34	1676.753.58	MH
8007	1684.573.35	1676.820.43	CO TOP
8008	1684.573.48	1677.078.92	CO TOP
8009	1684.568.14	1676.878.35	MH
8010	1684.550.35	1676.853.94	MH
8011	1684.550.84	1677.245.72	MH
8012	1684.551.65	1677.605.72	MH
8013	1684.551.69	1677.925.72	STUB
8014	1684.547.79	1676.669.36	MH
8015	1684.543.79	1676.668.36	MH
8016	1684.539.73	1676.636.85	MH
8017	1684.531.19	1676.728.20	MH
8018	1684.519.73	1676.634.04	MH
8019	1684.504.87	1676.643.36	MH
8020	1684.521.77	1676.708.57	MH
8021	1684.510.96	1677.023.07	MH
8022	1684.528.89	1676.940.07	MH
8023	1684.528.05	1676.960.07	STUB
8024	1684.523.97	1676.941.29	MH
8025	1684.512.11	1676.834.18	MH
8026	1684.507.62	1676.834.18	MH
8027	1684.515.22	1677.337.33	MH
8028	1684.518.04	1677.388.02	MH
8029	1684.518.20	1677.618.82	STUB

Point #	Northing	Easting	Description
100	1684.587.82	1676.967.00	JON
101	1684.578.80	1676.831.27	JON
102	1684.555.67	1676.823.37	JON
103	1684.543.66	1676.822.30	JON
104	1684.536.65	1676.813.19	JON
105	1684.521.48	1676.789.58	JON
106	1684.502.34	1676.753.53	JON
107	1684.489.08	1676.725.62	JON
108	1684.474.14	1676.703.12	JON
109	1684.458.04	1676.678.13	JON
110	1684.442.37	1676.645.91	JON
111	1684.426.34	1676.613.91	JON
112	1684.411.49	1676.575.19	JON
113	1684.397.26	1676.536.47	JON
114	1684.383.81	1676.497.39	JON
115	1684.370.82	1676.458.69	JON
116	1684.358.81	1676.419.57	JON
117	1684.347.32	1676.375.57	JON
118	1684.336.83	1676.331.09	JON
119	1684.326.83	1676.287.31	JON
120	1684.317.83	1676.243.14	JON
121	1684.309.35	1676.200.37	JON
122	1684.301.15	1676.158.24	JON
123	1684.293.00	1676.117.07	JON
124	1684.285.25	1676.076.57	JON
125	1684.278.25	1676.036.30	JON
126	1684.271.46	1675.996.30	JON
127	1684.265.23	1675.956.30	JON
128	1684.259.23	1675.916.30	JON
129	1684.253.82	1675.876.30	JON
130	1684.248.41	1675.836.30	JON
131	1684.243.41	1675.796.30	JON
132	1684.238.41	1675.756.30	JON
133	1684.233.41	1675.716.30	JON
134	1684.228.41	1675.676.30	JON
135	1684.223.41	1675.636.30	JON
136	1684.218.41	1675.596.30	JON
137	1684.213.41	1675.556.30	JON
138	1684.208.41	1675.516.30	JON
139	1684.203.41	1675.476.30	JON
140	1684.198.41	1675.436.30	JON
141	1684.193.41	1675.396.30	JON
142	1684.188.41	1675.356.30	JON
143	1684.183.41	1675.316.30	JON
144	1684.178.41	1675.276.30	JON
145	1684.173.41	1675.236.30	JON
146	1684.168.41	1675.196.30	JON
147	1684.163.41	1675.156.30	JON
148	1684.158.41	1675.116.30	JON
149	1684.153.41	1675.076.30	JON
150	1684.148.41	1675.036.30	JON

Point #	Northing	Easting	Description
151	1684.485.23	1676.857.58	JON
152	1684.468.58	1676.858.25	JON
153	1684.447.98	1676.858.25	JON
154	1684.413.62	1676.858.25	JON
155	1684.380.20	1676.858.25	JON
156	1684.340.39	1676.858.25	JON
157	1684.300.70	1676.858.25	JON
158	1684.260.70	1676.858.25	JON
159	1684.220.70	1676.858.25	JON
160	1684.180.70	1676.858.25	JON
161	1684.140.70	1676.858.25	JON
162	1684.100.70	1676.858.25	JON
163	1684.060.70	1676.858.25	JON
164	1684.020.70	1676.858.25	JON
165	1683.980.70	1676.858.25	JON
166	1683.940.70	1676.858.25	JON
167	1683.900.70	1676.858.25	JON
168	1683.860.70	1676.858.25	JON
169	1683.820.70	1676.858.25	JON
170	1683.780.70	1676.858.25	JON
171	1683.740.70	1676.858.25	JON
172	1683.700.70	1676.858.25	JON
173	1683.660.70	1676.858.25	JON
174	1683.620.70	1676.858.25	JON
175	1683.580.70	1676.858.25	JON
176	1683.540.70	1676.858.25	JON
177	1683.500.70	1676.858.25	JON
178	1683.460.70	1676.858.25	JON
179	1683.420.70	1676.858.25	JON
180	1683.380.70	1676.858.25	JON
181	1683.340.70	1676.858.25	JON
182	1683.300.70	1676.858.25	JON
183	1683.260.70	1676.858.25	JON
184	1683.220.70	1676.858.25	JON
185	1683.180.70	1676.858.25	JON
186	1683.140.70	1676.858.25	JON
187	1683.100.70	1676.858.25	JON
188	1683.060.70	1676.858.25	JON
189	1683.020.70	1676.858.25	JON
190	1682.980.70	1676.858.25	JON
191	1682.940.70	1676.858.25	JON
192	1682.900.70	1676.858.25	JON
193	1682.860.70	1676.858.25	JON
194	1682.820.70	1676.858.25	JON
195	1682.780.70	1676.858.25	JON
196	1682.740.70	1676.858.25	JON
197	1682.700.70	1676.858.25	JON
198	1682.660.70	1676.858.25	JON
199	1682.620.70	1676.858.25	JON
200	1682.580.70	1676.858.25	JON
201	1682.540.70	1676.858.25	JON



BAUGHMAN COMPANY
315 Ellis St.
Wichita, KS 67211
316-262-7271
BaughmanCo.com

BETZEN ADDITION
PHASE 1

COORDINATES

SANITARY SEWER
IMPROVEMENTS

PROJECT NUMBER:
XXX

DESIGN: AEG DRAWN: AJV
DATE: August 5, 2025

SHEET
23 OF
26

File: E:\Projects\Betzzen Addition\22-06-8006\Engineering\Phase 1\SE PLAN.dwg

PRELIMINARY
PLAN. NOT FOR
CONSTRUCTION.
This document is
preliminary in nature
and is not a final, signed
and sealed document.



**BAUGHMAN
COMPANY**

315 Ellis St.
Wichita, KS 67211
316-262-7271
BaughmanCo.com

BETZEN ADDITION
PHASE 1

**COPY
OF
PLAT**

SANITARY SEWER
IMPROVEMENTS

PROJECT NUMBER:
XXX

DESIGN: AEG DRAWN: AJV

DATE: August 5, 2025

SHEET OF

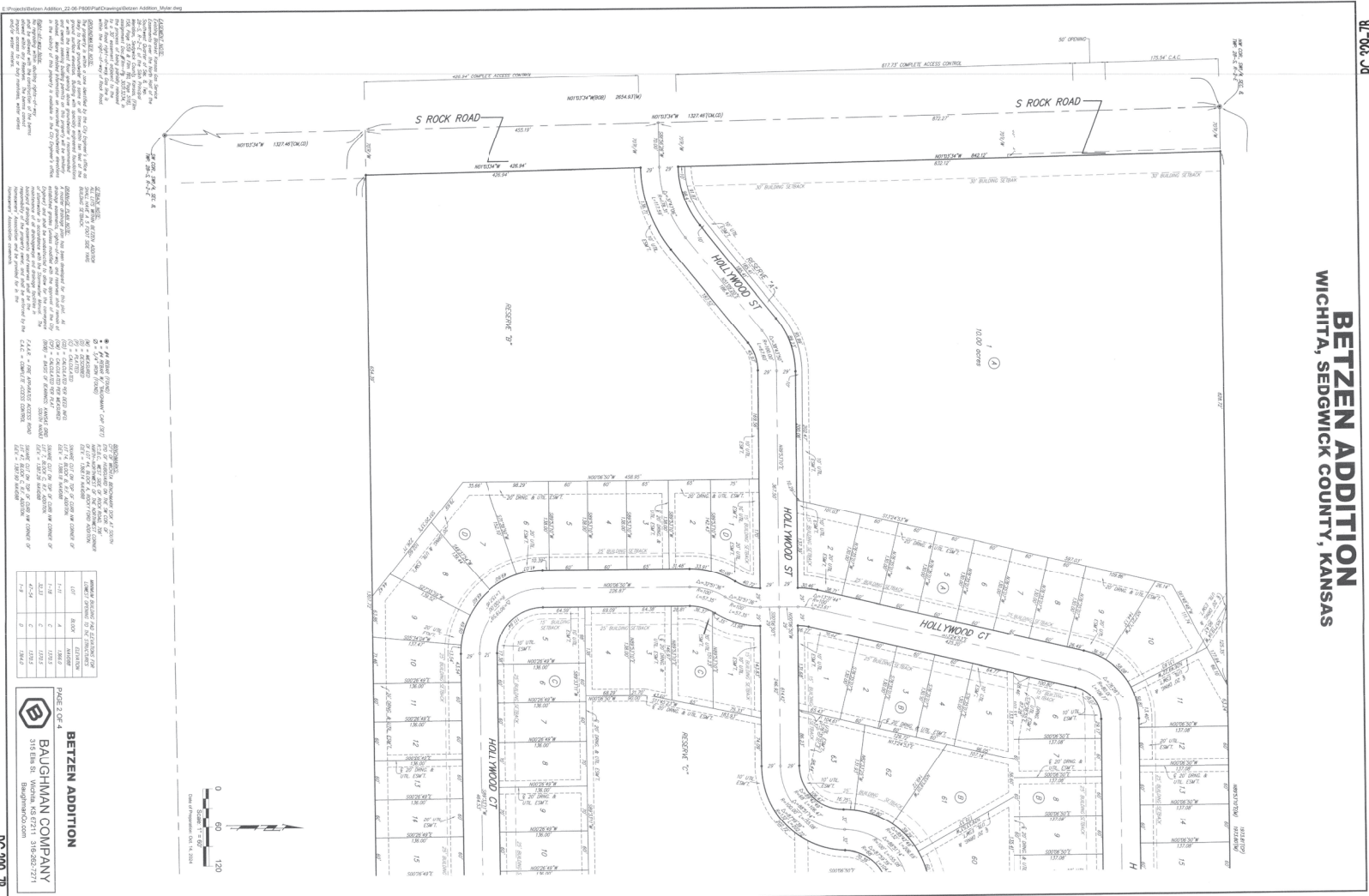
24 26

File: E:\Project\Betzem Addition_ZZ-06-R006\Engineering\Phase1\SS PLANS.dwg

BETZEN ADDITION

WICHITA, SEDGWICK COUNTY, KANSAS

PC 329-7B



GENERAL NOTES:

1. ALL SANITARY SEWER LINES SHALL BE INSTALLED IN ACCORDANCE WITH THE KANSAS SANITARY SEWER CODE, 2019 EDITION, AND THE KANSAS PLUMBING CODE, 2019 EDITION.
2. ALL SANITARY SEWER LINES SHALL BE INSTALLED AT A MINIMUM COVER OF 4 FEET.
3. ALL SANITARY SEWER LINES SHALL BE INSTALLED WITH A MINIMUM SLOPE OF 0.01 PER FEET.
4. ALL SANITARY SEWER LINES SHALL BE INSTALLED WITH A MINIMUM COVER OF 4 FEET.
5. ALL SANITARY SEWER LINES SHALL BE INSTALLED WITH A MINIMUM COVER OF 4 FEET.
6. ALL SANITARY SEWER LINES SHALL BE INSTALLED WITH A MINIMUM COVER OF 4 FEET.
7. ALL SANITARY SEWER LINES SHALL BE INSTALLED WITH A MINIMUM COVER OF 4 FEET.
8. ALL SANITARY SEWER LINES SHALL BE INSTALLED WITH A MINIMUM COVER OF 4 FEET.
9. ALL SANITARY SEWER LINES SHALL BE INSTALLED WITH A MINIMUM COVER OF 4 FEET.
10. ALL SANITARY SEWER LINES SHALL BE INSTALLED WITH A MINIMUM COVER OF 4 FEET.


GENERAL NOTES:

1. ALL SANITARY SEWER LINES SHALL BE INSTALLED IN ACCORDANCE WITH THE KANSAS SANITARY SEWER CODE, 2019 EDITION, AND THE KANSAS PLUMBING CODE, 2019 EDITION.
2. ALL SANITARY SEWER LINES SHALL BE INSTALLED AT A MINIMUM COVER OF 4 FEET.
3. ALL SANITARY SEWER LINES SHALL BE INSTALLED WITH A MINIMUM SLOPE OF 0.01 PER FEET.
4. ALL SANITARY SEWER LINES SHALL BE INSTALLED WITH A MINIMUM COVER OF 4 FEET.
5. ALL SANITARY SEWER LINES SHALL BE INSTALLED WITH A MINIMUM COVER OF 4 FEET.
6. ALL SANITARY SEWER LINES SHALL BE INSTALLED WITH A MINIMUM COVER OF 4 FEET.
7. ALL SANITARY SEWER LINES SHALL BE INSTALLED WITH A MINIMUM COVER OF 4 FEET.
8. ALL SANITARY SEWER LINES SHALL BE INSTALLED WITH A MINIMUM COVER OF 4 FEET.
9. ALL SANITARY SEWER LINES SHALL BE INSTALLED WITH A MINIMUM COVER OF 4 FEET.
10. ALL SANITARY SEWER LINES SHALL BE INSTALLED WITH A MINIMUM COVER OF 4 FEET.

GENERAL NOTES:

1. ALL SANITARY SEWER LINES SHALL BE INSTALLED IN ACCORDANCE WITH THE KANSAS SANITARY SEWER CODE, 2019 EDITION, AND THE KANSAS PLUMBING CODE, 2019 EDITION.
2. ALL SANITARY SEWER LINES SHALL BE INSTALLED AT A MINIMUM COVER OF 4 FEET.
3. ALL SANITARY SEWER LINES SHALL BE INSTALLED WITH A MINIMUM SLOPE OF 0.01 PER FEET.
4. ALL SANITARY SEWER LINES SHALL BE INSTALLED WITH A MINIMUM COVER OF 4 FEET.
5. ALL SANITARY SEWER LINES SHALL BE INSTALLED WITH A MINIMUM COVER OF 4 FEET.
6. ALL SANITARY SEWER LINES SHALL BE INSTALLED WITH A MINIMUM COVER OF 4 FEET.
7. ALL SANITARY SEWER LINES SHALL BE INSTALLED WITH A MINIMUM COVER OF 4 FEET.
8. ALL SANITARY SEWER LINES SHALL BE INSTALLED WITH A MINIMUM COVER OF 4 FEET.
9. ALL SANITARY SEWER LINES SHALL BE INSTALLED WITH A MINIMUM COVER OF 4 FEET.
10. ALL SANITARY SEWER LINES SHALL BE INSTALLED WITH A MINIMUM COVER OF 4 FEET.

NO.	DESCRIPTION	DATE
1	ISSUED FOR PERMIT	8/5/25
2	ISSUED FOR PERMIT	8/5/25
3	ISSUED FOR PERMIT	8/5/25
4	ISSUED FOR PERMIT	8/5/25
5	ISSUED FOR PERMIT	8/5/25
6	ISSUED FOR PERMIT	8/5/25
7	ISSUED FOR PERMIT	8/5/25
8	ISSUED FOR PERMIT	8/5/25
9	ISSUED FOR PERMIT	8/5/25
10	ISSUED FOR PERMIT	8/5/25


BETZEN ADDITION
 PAGE 2 OF 4
BAUGHMAN COMPANY
 315 Ellis St. Wichita, KS 67211 316-262-7271
 baughmanco.com

PC 329-7B

PRELIMINARY PLAN. NOT FOR CONSTRUCTION. This document is preliminary in nature and is not a final, signed and sealed document.



BAUGHMAN COMPANY

315 Ellis St.
Wichita, KS 67211
316-262-7271
BaughmanCo.com

BETZEN ADDITION
PHASE 1

COPY OF PLAT

SANITARY SEWER IMPROVEMENTS
PROJECT NUMBER: XXX

DESIGN: AEG DRAWN: AJV
DATE: August 5, 2025

SHEET 26 OF 26

PC 329-1D

BETZEN ADDITION

WICHITA, SEDGWICK COUNTY, KANSAS



- 1. 4" DIA. (1200) SANITARY SEWER
- 2. 6" DIA. (1800) SANITARY SEWER
- 3. 8" DIA. (2400) SANITARY SEWER
- 4. 12" DIA. (3600) SANITARY SEWER
- 5. 15" DIA. (4500) SANITARY SEWER
- 6. 18" DIA. (5400) SANITARY SEWER
- 7. 24" DIA. (7200) SANITARY SEWER
- 8. 30" DIA. (9000) SANITARY SEWER
- 9. 36" DIA. (10800) SANITARY SEWER
- 10. 42" DIA. (12600) SANITARY SEWER
- 11. 48" DIA. (14400) SANITARY SEWER
- 12. 54" DIA. (16200) SANITARY SEWER
- 13. 60" DIA. (18000) SANITARY SEWER
- 14. 66" DIA. (19800) SANITARY SEWER
- 15. 72" DIA. (21600) SANITARY SEWER
- 16. 78" DIA. (23400) SANITARY SEWER
- 17. 84" DIA. (25200) SANITARY SEWER
- 18. 90" DIA. (27000) SANITARY SEWER
- 19. 96" DIA. (28800) SANITARY SEWER
- 20. 102" DIA. (30600) SANITARY SEWER
- 21. 108" DIA. (32400) SANITARY SEWER
- 22. 114" DIA. (34200) SANITARY SEWER
- 23. 120" DIA. (36000) SANITARY SEWER
- 24. 126" DIA. (37800) SANITARY SEWER
- 25. 132" DIA. (39600) SANITARY SEWER
- 26. 138" DIA. (41400) SANITARY SEWER
- 27. 144" DIA. (43200) SANITARY SEWER
- 28. 150" DIA. (45000) SANITARY SEWER
- 29. 156" DIA. (46800) SANITARY SEWER
- 30. 162" DIA. (48600) SANITARY SEWER
- 31. 168" DIA. (50400) SANITARY SEWER
- 32. 174" DIA. (52200) SANITARY SEWER
- 33. 180" DIA. (54000) SANITARY SEWER
- 34. 186" DIA. (55800) SANITARY SEWER
- 35. 192" DIA. (57600) SANITARY SEWER
- 36. 198" DIA. (59400) SANITARY SEWER
- 37. 204" DIA. (61200) SANITARY SEWER
- 38. 210" DIA. (63000) SANITARY SEWER
- 39. 216" DIA. (64800) SANITARY SEWER
- 40. 222" DIA. (66600) SANITARY SEWER
- 41. 228" DIA. (68400) SANITARY SEWER
- 42. 234" DIA. (70200) SANITARY SEWER
- 43. 240" DIA. (72000) SANITARY SEWER
- 44. 246" DIA. (73800) SANITARY SEWER
- 45. 252" DIA. (75600) SANITARY SEWER
- 46. 258" DIA. (77400) SANITARY SEWER
- 47. 264" DIA. (79200) SANITARY SEWER
- 48. 270" DIA. (81000) SANITARY SEWER
- 49. 276" DIA. (82800) SANITARY SEWER
- 50. 282" DIA. (84600) SANITARY SEWER
- 51. 288" DIA. (86400) SANITARY SEWER
- 52. 294" DIA. (88200) SANITARY SEWER
- 53. 300" DIA. (90000) SANITARY SEWER
- 54. 306" DIA. (91800) SANITARY SEWER
- 55. 312" DIA. (93600) SANITARY SEWER
- 56. 318" DIA. (95400) SANITARY SEWER
- 57. 324" DIA. (97200) SANITARY SEWER
- 58. 330" DIA. (99000) SANITARY SEWER
- 59. 336" DIA. (100800) SANITARY SEWER
- 60. 342" DIA. (102600) SANITARY SEWER
- 61. 348" DIA. (104400) SANITARY SEWER
- 62. 354" DIA. (106200) SANITARY SEWER
- 63. 360" DIA. (108000) SANITARY SEWER
- 64. 366" DIA. (109800) SANITARY SEWER
- 65. 372" DIA. (111600) SANITARY SEWER
- 66. 378" DIA. (113400) SANITARY SEWER
- 67. 384" DIA. (115200) SANITARY SEWER
- 68. 390" DIA. (117000) SANITARY SEWER
- 69. 396" DIA. (118800) SANITARY SEWER
- 70. 402" DIA. (120600) SANITARY SEWER
- 71. 408" DIA. (122400) SANITARY SEWER
- 72. 414" DIA. (124200) SANITARY SEWER
- 73. 420" DIA. (126000) SANITARY SEWER
- 74. 426" DIA. (127800) SANITARY SEWER
- 75. 432" DIA. (129600) SANITARY SEWER
- 76. 438" DIA. (131400) SANITARY SEWER
- 77. 444" DIA. (133200) SANITARY SEWER
- 78. 450" DIA. (135000) SANITARY SEWER
- 79. 456" DIA. (136800) SANITARY SEWER
- 80. 462" DIA. (138600) SANITARY SEWER
- 81. 468" DIA. (140400) SANITARY SEWER
- 82. 474" DIA. (142200) SANITARY SEWER
- 83. 480" DIA. (144000) SANITARY SEWER
- 84. 486" DIA. (145800) SANITARY SEWER
- 85. 492" DIA. (147600) SANITARY SEWER
- 86. 498" DIA. (149400) SANITARY SEWER
- 87. 504" DIA. (151200) SANITARY SEWER
- 88. 510" DIA. (153000) SANITARY SEWER
- 89. 516" DIA. (154800) SANITARY SEWER
- 90. 522" DIA. (156600) SANITARY SEWER
- 91. 528" DIA. (158400) SANITARY SEWER
- 92. 534" DIA. (160200) SANITARY SEWER
- 93. 540" DIA. (162000) SANITARY SEWER
- 94. 546" DIA. (163800) SANITARY SEWER
- 95. 552" DIA. (165600) SANITARY SEWER
- 96. 558" DIA. (167400) SANITARY SEWER
- 97. 564" DIA. (169200) SANITARY SEWER
- 98. 570" DIA. (171000) SANITARY SEWER
- 99. 576" DIA. (172800) SANITARY SEWER
- 100. 582" DIA. (174600) SANITARY SEWER
- 101. 588" DIA. (176400) SANITARY SEWER
- 102. 594" DIA. (178200) SANITARY SEWER
- 103. 600" DIA. (180000) SANITARY SEWER
- 104. 606" DIA. (181800) SANITARY SEWER
- 105. 612" DIA. (183600) SANITARY SEWER
- 106. 618" DIA. (185400) SANITARY SEWER
- 107. 624" DIA. (187200) SANITARY SEWER
- 108. 630" DIA. (189000) SANITARY SEWER
- 109. 636" DIA. (190800) SANITARY SEWER
- 110. 642" DIA. (192600) SANITARY SEWER
- 111. 648" DIA. (194400) SANITARY SEWER
- 112. 654" DIA. (196200) SANITARY SEWER
- 113. 660" DIA. (198000) SANITARY SEWER
- 114. 666" DIA. (199800) SANITARY SEWER
- 115. 672" DIA. (201600) SANITARY SEWER
- 116. 678" DIA. (203400) SANITARY SEWER
- 117. 684" DIA. (205200) SANITARY SEWER
- 118. 690" DIA. (207000) SANITARY SEWER
- 119. 696" DIA. (208800) SANITARY SEWER
- 120. 702" DIA. (210600) SANITARY SEWER
- 121. 708" DIA. (212400) SANITARY SEWER
- 122. 714" DIA. (214200) SANITARY SEWER
- 123. 720" DIA. (216000) SANITARY SEWER
- 124. 726" DIA. (217800) SANITARY SEWER
- 125. 732" DIA. (219600) SANITARY SEWER
- 126. 738" DIA. (221400) SANITARY SEWER
- 127. 744" DIA. (223200) SANITARY SEWER
- 128. 750" DIA. (225000) SANITARY SEWER
- 129. 756" DIA. (226800) SANITARY SEWER
- 130. 762" DIA. (228600) SANITARY SEWER
- 131. 768" DIA. (230400) SANITARY SEWER
- 132. 774" DIA. (232200) SANITARY SEWER
- 133. 780" DIA. (234000) SANITARY SEWER
- 134. 786" DIA. (235800) SANITARY SEWER
- 135. 792" DIA. (237600) SANITARY SEWER
- 136. 798" DIA. (239400) SANITARY SEWER
- 137. 804" DIA. (241200) SANITARY SEWER
- 138. 810" DIA. (243000) SANITARY SEWER
- 139. 816" DIA. (244800) SANITARY SEWER
- 140. 822" DIA. (246600) SANITARY SEWER
- 141. 828" DIA. (248400) SANITARY SEWER
- 142. 834" DIA. (250200) SANITARY SEWER
- 143. 840" DIA. (252000) SANITARY SEWER
- 144. 846" DIA. (253800) SANITARY SEWER
- 145. 852" DIA. (255600) SANITARY SEWER
- 146. 858" DIA. (257400) SANITARY SEWER
- 147. 864" DIA. (259200) SANITARY SEWER
- 148. 870" DIA. (261000) SANITARY SEWER
- 149. 876" DIA. (262800) SANITARY SEWER
- 150. 882" DIA. (264600) SANITARY SEWER
- 151. 888" DIA. (266400) SANITARY SEWER
- 152. 894" DIA. (268200) SANITARY SEWER
- 153. 900" DIA. (270000) SANITARY SEWER
- 154. 906" DIA. (271800) SANITARY SEWER
- 155. 912" DIA. (273600) SANITARY SEWER
- 156. 918" DIA. (275400) SANITARY SEWER
- 157. 924" DIA. (277200) SANITARY SEWER
- 158. 930" DIA. (279000) SANITARY SEWER
- 159. 936" DIA. (280800) SANITARY SEWER
- 160. 942" DIA. (282600) SANITARY SEWER
- 161. 948" DIA. (284400) SANITARY SEWER
- 162. 954" DIA. (286200) SANITARY SEWER
- 163. 960" DIA. (288000) SANITARY SEWER
- 164. 966" DIA. (289800) SANITARY SEWER
- 165. 972" DIA. (291600) SANITARY SEWER
- 166. 978" DIA. (293400) SANITARY SEWER
- 167. 984" DIA. (295200) SANITARY SEWER
- 168. 990" DIA. (297000) SANITARY SEWER
- 169. 996" DIA. (298800) SANITARY SEWER
- 170. 1002" DIA. (300600) SANITARY SEWER
- 171. 1008" DIA. (302400) SANITARY SEWER
- 172. 1014" DIA. (304200) SANITARY SEWER
- 173. 1020" DIA. (306000) SANITARY SEWER
- 174. 1026" DIA. (307800) SANITARY SEWER
- 175. 1032" DIA. (309600) SANITARY SEWER
- 176. 1038" DIA. (311400) SANITARY SEWER
- 177. 1044" DIA. (313200) SANITARY SEWER
- 178. 1050" DIA. (315000) SANITARY SEWER
- 179. 1056" DIA. (316800) SANITARY SEWER
- 180. 1062" DIA. (318600) SANITARY SEWER
- 181. 1068" DIA. (320400) SANITARY SEWER
- 182. 1074" DIA. (322200) SANITARY SEWER
- 183. 1080" DIA. (324000) SANITARY SEWER
- 184. 1086" DIA. (325800) SANITARY SEWER
- 185. 1092" DIA. (327600) SANITARY SEWER
- 186. 1098" DIA. (329400) SANITARY SEWER
- 187. 1104" DIA. (331200) SANITARY SEWER
- 188. 1110" DIA. (333000) SANITARY SEWER
- 189. 1116" DIA. (334800) SANITARY SEWER
- 190. 1122" DIA. (336600) SANITARY SEWER
- 191. 1128" DIA. (338400) SANITARY SEWER
- 192. 1134" DIA. (340200) SANITARY SEWER
- 193. 1140" DIA. (342000) SANITARY SEWER
- 194. 1146" DIA. (343800) SANITARY SEWER
- 195. 1152" DIA. (345600) SANITARY SEWER
- 196. 1158" DIA. (347400) SANITARY SEWER
- 197. 1164" DIA. (349200) SANITARY SEWER
- 198. 1170" DIA. (351000) SANITARY SEWER
- 199. 1176" DIA. (352800) SANITARY SEWER
- 200. 1182" DIA. (354600) SANITARY SEWER
- 201. 1188" DIA. (356400) SANITARY SEWER
- 202. 1194" DIA. (358200) SANITARY SEWER
- 203. 1200" DIA. (360000) SANITARY SEWER
- 204. 1206" DIA. (361800) SANITARY SEWER
- 205. 1212" DIA. (363600) SANITARY SEWER
- 206. 1218" DIA. (365400) SANITARY SEWER
- 207. 1224" DIA. (367200) SANITARY SEWER
- 208. 1230" DIA. (369000) SANITARY SEWER
- 209. 1236" DIA. (370800) SANITARY SEWER
- 210. 1242" DIA. (372600) SANITARY SEWER
- 211. 1248" DIA. (374400) SANITARY SEWER
- 212. 1254" DIA. (376200) SANITARY SEWER
- 213. 1260" DIA. (378000) SANITARY SEWER
- 214. 1266" DIA. (379800) SANITARY SEWER
- 215. 1272" DIA. (381600) SANITARY SEWER
- 216. 1278" DIA. (383400) SANITARY SEWER
- 217. 1284" DIA. (385200) SANITARY SEWER
- 218. 1290" DIA. (387000) SANITARY SEWER
- 219. 1296" DIA. (388800) SANITARY SEWER
- 220. 1302" DIA. (390600) SANITARY SEWER
- 221. 1308" DIA. (392400) SANITARY SEWER
- 222. 1314" DIA. (394200) SANITARY SEWER
- 223. 1320" DIA. (396000) SANITARY SEWER
- 224. 1326" DIA. (397800) SANITARY SEWER
- 225. 1332" DIA. (399600) SANITARY SEWER
- 226. 1338" DIA. (401400) SANITARY SEWER
- 227. 1344" DIA. (403200) SANITARY SEWER
- 228. 1350" DIA. (405000) SANITARY SEWER
- 229. 1356" DIA. (406800) SANITARY SEWER
- 230. 1362" DIA. (408600) SANITARY SEWER
- 231. 1368" DIA. (410400) SANITARY SEWER
- 232. 1374" DIA. (412200) SANITARY SEWER
- 233. 1380" DIA. (414000) SANITARY SEWER
- 234. 1386" DIA. (415800) SANITARY SEWER
- 235. 1392" DIA. (417600) SANITARY SEWER
- 236. 1398" DIA. (419400) SANITARY SEWER
- 237. 1404" DIA. (421200) SANITARY SEWER
- 238. 1410" DIA. (423000) SANITARY SEWER
- 239. 1416" DIA. (424800) SANITARY SEWER
- 240. 1422" DIA. (426600) SANITARY SEWER
- 241. 1428" DIA. (428400) SANITARY SEWER
- 242. 1434" DIA. (430200) SANITARY SEWER
- 243. 1440" DIA. (432000) SANITARY SEWER
- 244. 1446" DIA. (433800) SANITARY SEWER
- 245. 1452" DIA. (435600) SANITARY SEWER
- 246. 1458" DIA. (437400) SANITARY SEWER
- 247. 1464" DIA. (439200) SANITARY SEWER
- 248. 1470" DIA. (441000) SANITARY SEWER
- 249. 1476" DIA. (442800) SANITARY SEWER
- 250. 1482" DIA. (444600) SANITARY SEWER
- 251. 1488" DIA. (446400) SANITARY SEWER
- 252. 1494" DIA. (448200) SANITARY SEWER
- 253. 1500" DIA. (450000) SANITARY SEWER
- 254. 1506" DIA. (451800) SANITARY SEWER
- 255. 1512" DIA. (453600) SANITARY SEWER
- 256. 1518" DIA. (455400) SANITARY SEWER
- 257. 1524" DIA. (457200) SANITARY SEWER
- 258. 1530" DIA. (459000) SANITARY SEWER
- 259. 1536" DIA. (460800) SANITARY SEWER
- 260. 1542" DIA. (462600) SANITARY SEWER
- 261. 1548" DIA. (464400) SANITARY SEWER
- 262. 1554" DIA. (466200) SANITARY SEWER
- 263. 1560" DIA. (468000) SANITARY SEWER
- 264. 1566" DIA. (469800) SANITARY SEWER
- 265. 1572" DIA. (471600) SANITARY SEWER
- 266. 1578" DIA. (473400) SANITARY SEWER
- 267. 1584" DIA. (475200) SANITARY SEWER
- 268. 1590" DIA. (477000) SANITARY SEWER
- 269. 1596" DIA. (478800) SANITARY SEWER
- 270. 1602" DIA. (480600) SANITARY SEWER
- 271. 1608" DIA. (482400) SANITARY SEWER
- 272. 1614" DIA. (484200) SANITARY SEWER
- 273. 1620" DIA. (486000) SANITARY SEWER
- 274. 1626" DIA. (487800) SANITARY SEWER
- 275. 1632" DIA. (489600) SANITARY SEWER
- 276. 1638" DIA. (491400) SANITARY SEWER
- 277. 1644" DIA. (493200) SANITARY SEWER
- 278. 1650" DIA. (495000) SANITARY SEWER
- 279. 1656" DIA. (496800) SANITARY SEWER
- 280. 1662" DIA. (498600) SANITARY SEWER
- 281. 1668" DIA. (500400) SANITARY SEWER
- 282. 1674" DIA. (502200) SANITARY SEWER
- 283. 1680" DIA. (504000) SANITARY SEWER
- 284. 1686" DIA. (505800) SANITARY SEWER
- 285. 1692" DIA. (507600) SANITARY SEWER
- 286. 1698" DIA. (509400) SANITARY SEWER
- 287. 1704" DIA. (511200) SANITARY SEWER
- 288. 1710" DIA. (513000) SANITARY SEWER
- 289. 1716" DIA. (514800) SANITARY SEWER
- 290. 1722" DIA. (516600) SANITARY SEWER
- 291. 1728" DIA. (518400) SANITARY SEWER
- 292. 1734" DIA. (520200) SANITARY SEWER
- 293. 1740" DIA. (522000) SANITARY SEWER
- 294. 1746" DIA. (523800) SANITARY SEWER
- 295. 1752" DIA. (525600) SANITARY SEWER
- 296. 1758" DIA. (527400) SANITARY SEWER
- 297. 1764" DIA. (529200) SANITARY SEWER
- 298. 1770" DIA. (531000) SANITARY SEWER
- 299. 1776" DIA. (532800) SANITARY SEWER
- 300. 1782" DIA. (534600) SANITARY SEWER
- 301. 1788" DIA. (536400) SANITARY SEWER
- 302. 1794" DIA. (538200) SANITARY SEWER
- 303. 1800" DIA. (540000) SANITARY SEWER
- 304. 1806" DIA. (541800) SANITARY SEWER
- 305. 1812" DIA. (543600) SANITARY SEWER
- 306. 1818" DIA. (545400) SANITARY SEWER
- 307. 1824" DIA. (547200) SANITARY SEWER
- 308. 1830" DIA. (549000) SANITARY SEWER
- 309. 1836" DIA. (550800) SANITARY SEWER
- 310. 1842" DIA. (552600) SANITARY SEWER
- 311. 1848" DIA. (554400) SANITARY SEWER
- 312. 1854" DIA. (556200) SANITARY SEWER
- 313. 1860" DIA. (558000) SANITARY SEWER
- 314. 1866" DIA. (559800) SANITARY SEWER
- 315. 1872" DIA. (561600) SANITARY SEWER
- 316. 1878" DIA. (563400) SANITARY SEWER
- 317. 1884" DIA. (565200) SANITARY SEWER
- 318. 1890" DIA. (567000) SANITARY SEWER
- 319. 1896" DIA. (568800) SANITARY SEWER
- 320. 1902" DIA. (570600) SANITARY SEWER
- 321. 1908" DIA. (572400) SANITARY SEWER
- 322. 1914" DIA. (574200) SANITARY SEWER
- 323. 1920" DIA. (576000) SANITARY SEWER
- 324. 1926" DIA. (577800) SANITARY SEWER
- 325. 1932" DIA. (579600) SANITARY SEWER
- 326. 1938" DIA. (581400) SANITARY SEWER
- 327. 1944" DIA. (583200) SANITARY SEWER
- 328. 1950" DIA. (585000) SANITARY SEWER
- 329. 1956" DIA. (586800) SANITARY SEWER
- 330. 1962" DIA. (588600) SANITARY SEWER
- 331. 1968" DIA. (590400) SANITARY SEWER
- 332. 1974" DIA. (592200) SANITARY SEWER
- 333. 1980" DIA. (594000) SANITARY SEWER
- 334. 1986" DIA. (595800) SANITARY SEWER
- 335. 1992" DIA. (597600) SANITARY SEWER
- 336. 1998" DIA. (599400) SANITARY SEWER
- 337. 2004" DIA. (601200) SANITARY SEWER
- 338. 2010" DIA. (603000) SANITARY SEWER
- 339. 2016" DIA. (604800) SANITARY SEWER
- 340. 2022" DIA. (606600) SANITARY SEWER
- 341. 2028" DIA. (608400) SANITARY SEWER
- 342. 2034" DIA. (610200) SANITARY SEWER
- 343. 2040" DIA. (612000) SANITARY SEWER
- 344. 2046" DIA. (613800) SANITARY SEWER
- 345. 2052" DIA. (615600) SANITARY SEWER
- 346. 2058" DIA. (617400) SANITARY SEWER
- 347. 2064" DIA. (619200) SANITARY SEWER
- 348. 2070" DIA. (621000) SANITARY SEWER
- 349. 2076" DIA. (622800) SANITARY SEWER
- 350. 2082" DIA. (624600) SANITARY SEWER
- 351. 2088" DIA. (626400) SANITARY SEWER
- 352. 2094" DIA. (628200) SANITARY SEWER
- 353. 2100" DIA. (630000) SANITARY SEWER
- 354. 2106" DIA. (631800) SANITARY SEWER
- 355. 2112" DIA. (633600) SANITARY SEWER
- 356. 2118" DIA. (635400) SANITARY SEWER
- 357. 2124" DIA. (637200) SANITARY SEWER
- 358. 2130" DIA. (639000) SANITARY SEWER
- 359. 2136" DIA. (640800) SANITARY SEWER
- 360. 2142" DIA. (642600) SANITARY SEWER
- 361. 2148" DIA. (644400) SANITARY SEWER
- 362. 2154" DIA. (646200) SANITARY SEWER
- 363. 2160" DIA. (648000) SANITARY SEWER
- 364. 2166" DIA. (649800) SANITARY SEWER
- 365. 2172" DIA. (651600) SANITARY SEWER
- 366. 2178" DIA. (653400) SANITARY SEWER
- 367. 2184" DIA. (655200) SANITARY SEWER
- 368. 2190" DIA. (657000) SANITARY SEWER
- 369. 2196" DIA. (658800) SANITARY SEWER
- 370. 2202" DIA. (660600) SANITARY SEWER
- 371. 2208" DIA. (662400) SANITARY SEWER
- 372. 2214" DIA. (664200) SANITARY SEWER
- 373. 2220" DIA. (666000) SANITARY SEWER
- 374. 2226" DIA. (667800) SANITARY SEWER
- 375. 2232" DIA. (669600) SANITARY SEWER
- 376. 2238" DIA. (671400) SANITARY SEWER
- 377. 2244" DIA. (673200) SANITARY SEWER
- 378. 2250" DIA. (675000) SANITARY SEWER
- 379. 2256" DIA. (676800) SANITARY SEWER
- 380. 2262" DIA. (678600) SANITARY SEWER
- 381. 2268" DIA. (680400) SANITARY SEWER
- 382. 2274" DIA. (682200) SANITARY SEWER
- 383. 2280" DIA. (684000) SANITARY SEWER
- 384. 2286" DIA. (685800) SANITARY SEWER
- 385. 2292" DIA. (687600) SANITARY SEWER
- 386. 2