

SANITARY DISTRIBUTION IMPROVEMENTS TO SERVE 29TH & GREENWICH ADDITION

GENERAL NOTES

1. THE CONTRACTOR SHALL COMPLY WITH ALL APPLICABLE SAFETY REGULATIONS. ALL CONSTRUCTION SHALL BE COMPLETED FOLLOWING CURRENT CITY STANDARD SPECIFICATIONS AND SPECIAL PROVISIONS.
2. CONTRACTOR WILL BE REQUIRED TO PROVIDE NOTICE TO UTILITY COMPANIES A MINIMUM OF SEVENTY-TWO HOURS PRIOR TO ANY EXCAVATION. KANSAS ONE CALL 687-2470
THE CONTRACTOR MUST NOTIFY THE FOLLOWING IN CASE OF AN EMERGENCY

AT&T 1-800-246-8464
BLACK HILLS ENERGY 1-800-694-8989
CITY OF WICHITA WATER & SEWER 1-316-219-8921
CITY OF WICHITA STORMWATER 1-316-268-4090
CITY OF WICHITA TRAFFIC 1-316-268-4034
COX COMMUNICATIONS 1-888-249-3530
KANSAS GAS SERVICE 1-888-482-4950
EVERGY 1-800-544-4857

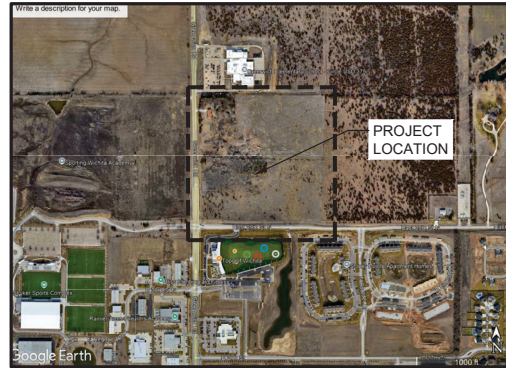
3. UTILITY SERVICE LINES, POLES, ETC. ARE TO BE ADJUSTED AS NECESSARY BY OTHERS PRIOR TO CONSTRUCTION UNLESS THE PLANS SPECIFICALLY CALL FOR THEIR ADJUSTMENT BY THE CONTRACTOR OR UNLESS THE PLANS SPECIFICALLY IDENTIFY A UTILITY TO BE ADJUSTED BY ITS OWNER DURING CONSTRUCTION. EXISTING UTILITIES AND THEIR LOCATIONS AS SHOWN ON THE PLANS, REPRESENT THE BEST INFORMATION OBTAINABLE FOR DESIGN. THE CONTRACTOR WILL BE REQUIRED TO WORK AROUND EXISTING UTILITIES WITHIN THE RIGHT-OF-WAY WHICH DO NOT CONFLICT WITH PROPOSED CONSTRUCTION.
4. RUBBLE FROM THE REMOVAL OF MISCELLANEOUS STRUCTURES AND EXCESS EXCAVATION WHICH IS TO BE WASTED SHALL BE DISPOSED OF ON SITES TO BE PROVIDED BY THE CONTRACTOR. THESE SITES SHALL BE APPROVED BY THE ENGINEER AS TO SUITABILITY, APPEARANCE AND SITE LOCATION. LOCATIONS, IN THE OPINION OF THE ENGINEER, THAT WILL LEAVE AN UNSIGHTLY APPEARANCE WILL NOT BE APPROVED. ALL DISPOSAL SITES MUST BE APPROVED BY THE KANSAS DEPARTMENT OF HEALTH AND ENVIRONMENT. MATERIAL EITHER STOCKPILED OR DISPOSED OF IN A FLOOD PLAIN WILL REQUIRE A KANSAS STATE BOARD OF AGRICULTURE PERMIT. ANY MATERIAL DUMPED IN WATERS OF THE UNITED STATES WETLANDS IS SUBJECT TO US CORPS OF ENGINEERS PERMITTING REGULATIONS. ANY MATERIAL BURIED OR STOCK PILED BEYOND APPROVED CONSTRUCTION LIMITS WILL REQUIRE ADDITIONAL ARCHAEOLOGICAL INVESTIGATIONS UNLESS BURIED IN A PREVIOUSLY APPROVED BORROW LOCATION.
5. TREES AND SHRUBS IN PUBLIC RIGHT-OF-WAY WHICH REDIRECT CONFLICT WITH PROPOSED NEW CONSTRUCTION SHALL BE REMOVED BY THE CONTRACTOR WITH THE CITY ENGINEER'S APPROVAL. TREES AND SHRUBS WHICH ARE NOT IN DIRECT CONFLICT WITH PROPOSED NEW CONSTRUCTION SHALL BE SAVED AND PROTECTED FROM DAMAGE.
6. THE CONTRACTOR SHALL GIVE ALL PROPERTY OWNERS AND/OR TENANTS OF DEVELOPED PROPERTY ADJUTING THE CONSTRUCTION OF THE PROJECT A MINIMUM OF TEN DAYS NOTICE PRIOR TO START OF CONSTRUCTION.
7. THE CONTRACTOR SHALL BE RESPONSIBLE FOR PRESERVING PROPERTY IRONS. THE CONTRACTOR WILL BE REQUIRED TO RE-ESTABLISH ANY PROPERTY IRONS WHICH ARE DAMAGED OR DESTROYED BY THIS CONSTRUCTION OPERATIONS SUCH IRONS SHALL BE RE-ESTABLISHED BY A LICENSED LAND SURVEYOR IN ACCORDANCE WITH STATE LAWS.
8. THE CONTRACTOR SHALL NOTIFY THE INSPECTING ENGINEER AND DAWNITA REINHARDT AT 316-268-4574 WITH THE CITY OF WICHITA WITH THE ANTICIPATED CONSTRUCTION START DATE AND NOTIFY THEM OF PROJECT COMPLETION. STAKING AND INSPECTION FOR THIS PROJECT WILL BE THE RESPONSIBILITY OF THE CONTRACTOR.
9. IF TRAFFIC WILL BE IMPACTED BY CONSTRUCTION, A TRAFFIC CONTROL PLAN MUST BE SUBMITTED AND APPROVED BY THE CITY TRAFFIC ENGINEER, MIKE ARMOUR AT TRAFFIC@WICHITA.GOV BEFORE CONSTRUCTION CAN BEGIN. THE CONTRACTOR SHALL BE RESPONSIBLE FOR ALL TRAFFIC CONTROL MEASURES TO FACILITATE CONSTRUCTION. ALL CONSTRUCTION ZONE MARKINGS AND SIGNAGE SHALL CONFORM TO THE LATEST VERSION OF THE MANUAL ON UNIFORM TRAFFIC CONTROL DEVICES AS PUBLISHED BY THE US DEPT. OF TRANSPORTATION, FEDERAL HIGHWAY ADMINISTRATION. ALL COSTS ASSOCIATED WITH CONSTRUCTION MARKINGS AND SIGNAGE SHALL BE THE CONTRACTORS RESPONSIBILITY.
10. ALL ELEVATIONS ARE NAVD 88.
11. ALL AREAS DISTURBED DURING CONSTRUCTION THAT WILL NOT BE UNDER PROPOSED PAVEMENT SHALL BE RESTORED TO MATCH EXISTING CONDITIONS.
12. ANY SIDEWALK, DRIVE APPROACH, CURB, OR STREET PAVEMENT REMOVED TO CONSTRUCT PROJECT SHALL BE REPLACED WITH A PAVEMENT CUT PERMIT AND BE REPLACED BY THE CITY CONTRACTOR. PERMITS CAN BE OBTAINED BY CALLING 316-268-4501 OR 316-268-4480.
13. A PORTION OF EXCESS EXCAVATED MATERIAL SHALL BE MOUNDING AROUND MANHOLES WHICH EXTENDS MORE THAN ONE FOOT ABOVE THE EXISTING GROUND. SUCH MOUNDS SHALL BE CONSTRUCTED WITH A SIX FOOT DIAMETER FLAT TOP WITH 4 TO 1 SIDE SLOPES DOWN TO THE ORIGINAL GROUND.
14. GEOTECHNICAL REPORT AVAILABLE UPON REQUEST.

6251C
WIS-07

WICHITA, KANSAS

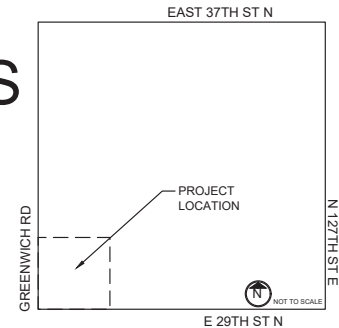
PAUL GUNZELMAN, P.E CITY ENGINEER
2025-009005PPS
(53030982)

10/1/2025



SHEET INDEX

- | | |
|------|-----------------------------------------|
| 1.0 | PLAT |
| 2.0 | SITE PLAN |
| 2.1 | PLAN AND PROFILE |
| 3.0 | PLAN AND PROFILE |
| 3.0 | EROSION CONTROL PLAN |
| 4.0 | CITY OF WICHITA EROSION CONTROL DETAILS |
| | -STREET IMPROVEMENT GENERAL NOTES |
| 5.0 | CITY OF WICHITA EROSION CONTROL DETAILS |
| | -SUBDIVISION DEVELOPMENT GENERAL NOTES |
| 6.0 | CITY OF WICHITA EROSION CONTROL DETAILS |
| | -CONSTRUCTION ENTRANCE |
| 7.0 | CITY OF WICHITA EROSION CONTROL DETAILS |
| | -SILT FENCE BARRIERS |
| 8.0 | CITY OF WICHITA EROSION CONTROL DETAILS |
| | -STRAW BALE BARRIERS FOR AREA INLETS |
| 9.0 | CITY OF WICHITA SANITARY DETAILS |
| | -PRECAST SANITARY SEWER MANHOLE |
| 10.0 | CITY OF WICHITA SANITARY DETAILS |
| | -MANHOLE FRAME AND COVER (SANITARY) |



SITE VICINITY MAP
NW QUARTER OF SECTION 34
TOWNSHIP 26 SOUTH
RANGE 2 EAST



JAY D. ODELL
25890

CLIENT
GREENWICH LLC
29TH AND
8110 E 32ND STREET
SUITE 150
WICHITA, KS 67226



ENGINEERING FIRM OF RECORD

REV	DESCRIPTION	DATE
1	LINE C REVISION	10.1.25

SANITARY IMPROVEMENTS
29TH AND GREENWICH
ADDITION

10/1/2025

PPS

29TH AND GREENWICH
WICHITA, KS 67226

TITLE

APPROVED AS NOTED
BY WICHITA PUBLIC
WORKS ENGINEERING
DIVISION

ENGINEERING SHAWN MELLIES, PE 06/30/25

UTILITIES SCOTT MACEY 06/30/25

NOTE TO CONTRACTORS

INSPECTION AND TESTING FOR THIS PROJECT IS TO BE PROVIDED BY A LICENSED CONSULTING ENGINEERING FIRM UNDER CONTRACT WITH THE OWNER/DEVELOPER. SAID INSPECTION TO BE IN ACCORDANCE WITH THE CITY OF WICHITA STANDARD CONSTRUCTION ENGINEERING PRACTICES AND CERTIFIED BY A LICENSED PROFESSIONAL ENGINEERING IN THE STATE OF KANSAS. NO WORK SHALL BE PERFORMED BY THE CONTRACTOR WITHOUT SUCH INSPECTION NOR SHALL ANY WORK BE COMMENCED WITHOUT WRITTEN AUTHORIZATION BY CITY ENGINEER. ALL CONSTRUCTION AND MATERIALS SHALL COMPLY WITH THE CURRENT CITY OF WICHITA SPECIFICATIONS AND STANDARD AND SPECIAL PROVISIONS. (ON FILE AND AVAILABLE AT WICHITA.GOV)

AN APPROVED COPY OF THESE PLANS SIGNED BY CITY STAFF ARE REQUIRED ON-SITE

AS-BUILTS

Contractor: **McCullough Excavation**

Project Inspector: **Pablo Oden**

Date: 4/20/2026

117 E. Lewis, Wichita, KS 67202 (316)264-0242

ENGINEER OF RECORD

AUBRY ENTERPRISES
JAY D. O'DELL, P.E.
5912 MAPLE ST
MISSION, KS 66202
JAY.ODELL@AUBRYENTERPRISES.COM

AS-BUILTS

Contractor: **Apex**

Project Inspector: **Pablo Oden**

Date: 4/20/2026

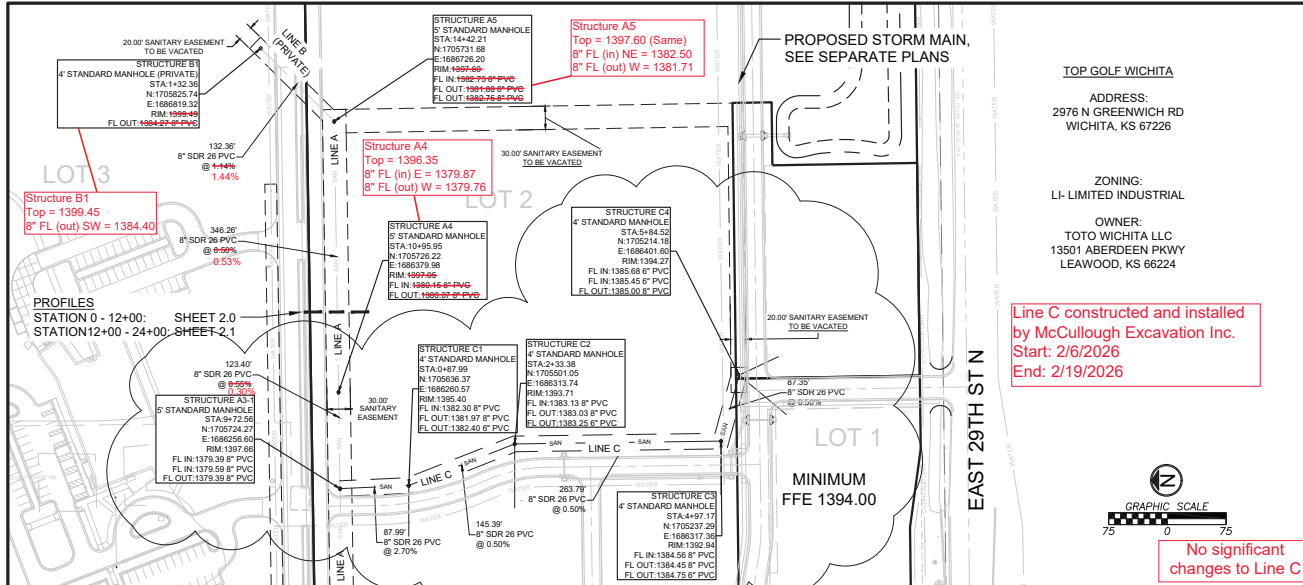
117 E. Lewis, Wichita, KS 67202 (316)264-0242



PLAN AND PROFILE: LINE A (STATION12+00-15+00) & LINE C



Line B constructed and installed by Apex Excavating LLC
Start: 8/4/2025
End: 9/29/2025



JAY D. O'DELL
25890

CLIENT
GREENWICH LLC
29TH AND GREENWICH
8110 E 32ND STREET
SUITE 150
WICHITA, KS 67226



ENGINEERING FIRM OF RECORD

REV	DESCRIPTION	DATE
1	LINE C REVISION	10.1.25

SANITARY IMPROVEMENTS
29TH AND GREENWICH ADDITION

10/1/2025

PPS

29TH AND GREENWICH WICHITA, KS 67226

PLAN AND PROFILE

2.1

