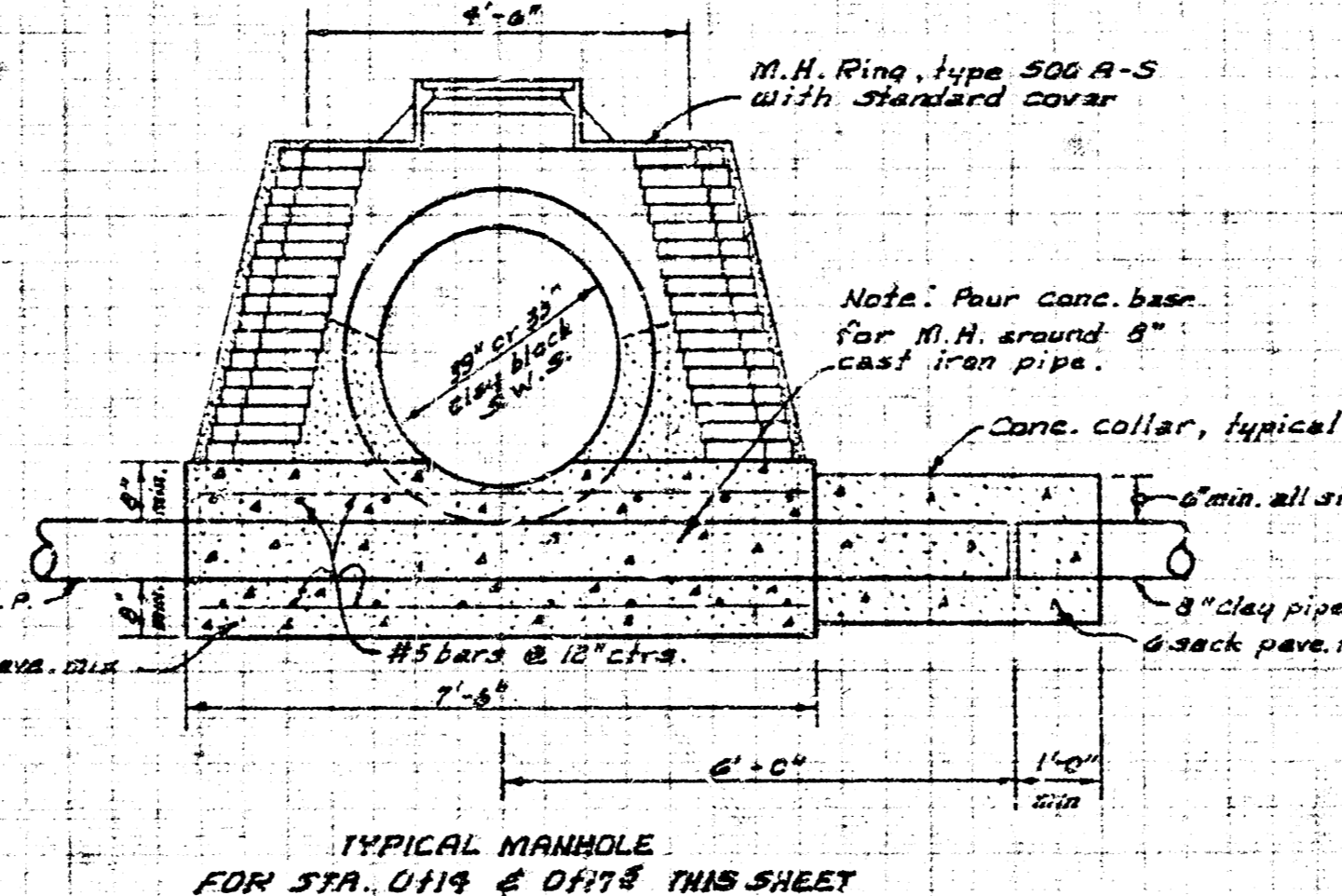


D. Kruger
D. Cramer

B.M. 111.395 "cut top retaining wall 25' W. of W.L. Estelle on N.L. Waterman

B.M. 114.54 "in Troy Fire Hyd. N.W. Cor. Erie & Waterman

Plan Scale 1"=20'
Profile Scale 1"=20' Hor.
1"=2' Vert.



REPAIR OF PART OF
DIST. A. SAN SEWER NO. 12

CITY OF WICHITA, KANSAS
B. E. SMITH, CITY ENGINEER
DATE: SEPT. 1970
PROJ. NO. 432-280

