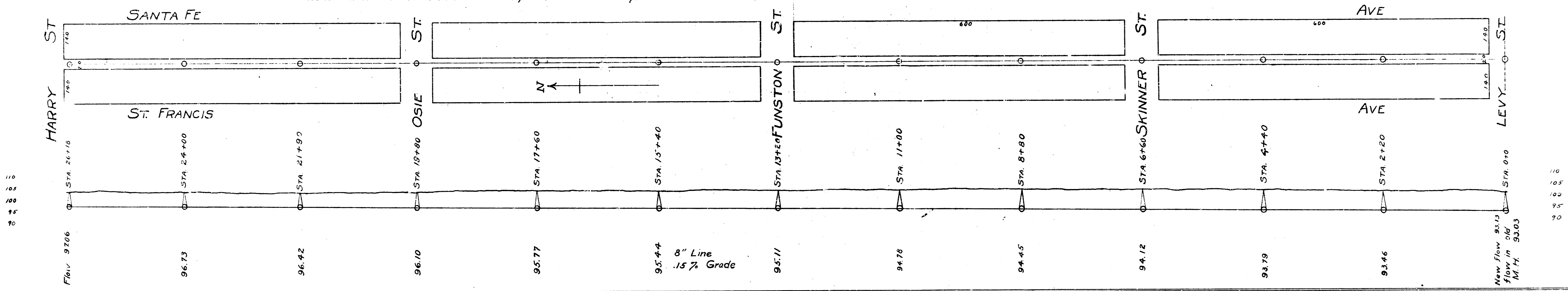
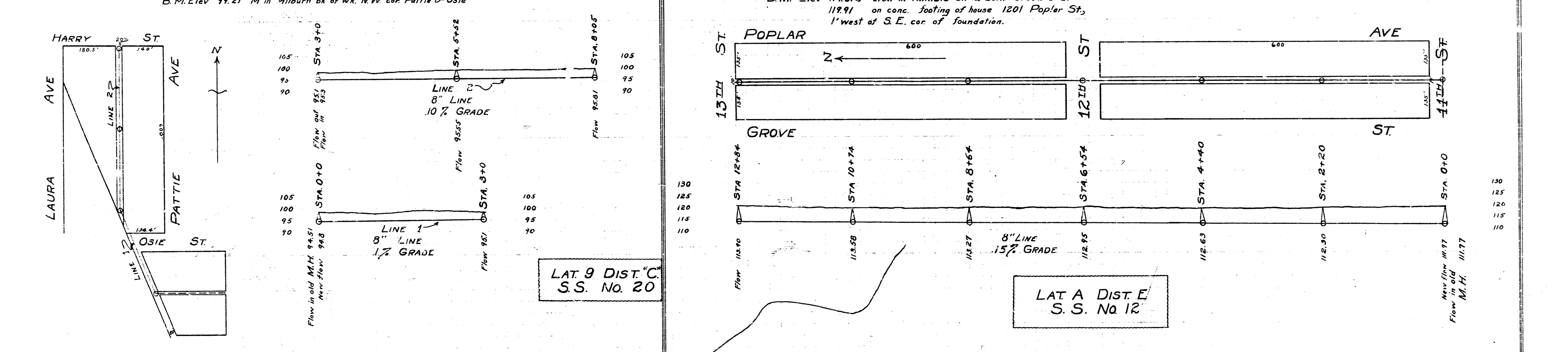


B.M. Elev 101.96 u in Jones bk. of W.K.N., N.E. cor Santa Fe & Levy.  
 103.73 P. in Rettilite bk. of W.K.S.W. cor alley E. of St Francis on Herry.



B.M. Elev 99.21 M in Milburn bk. of W.K. NW cor Pattie & Osie

B.M. Elev 119.012 Iron in Thimble ctr of both Grove & 13th  
 119.91 on conc. footing of house 1201 Poplar St,  
 1' west of S.E. cor of foundation.



B.M. Elev 117.19 + on curb ret E, S.E. cor Madison & 13th

