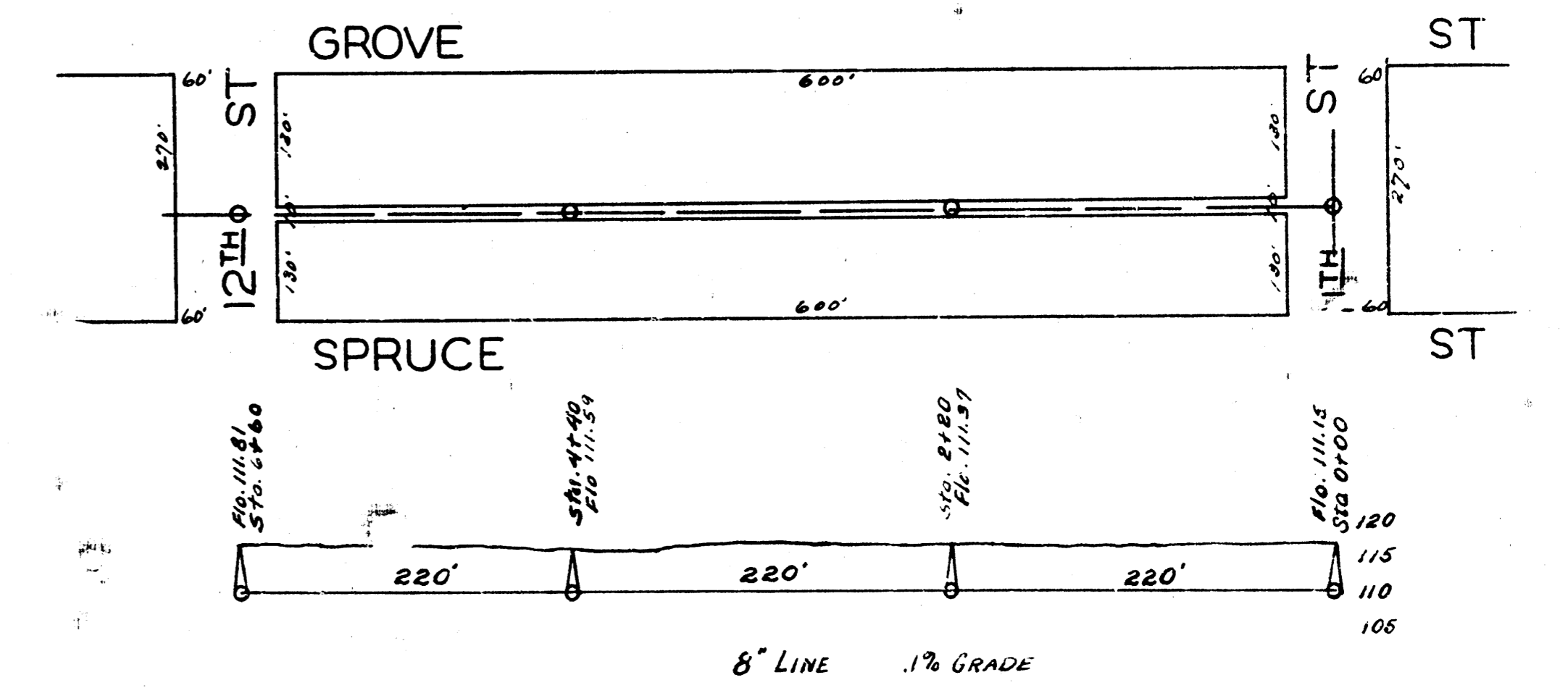
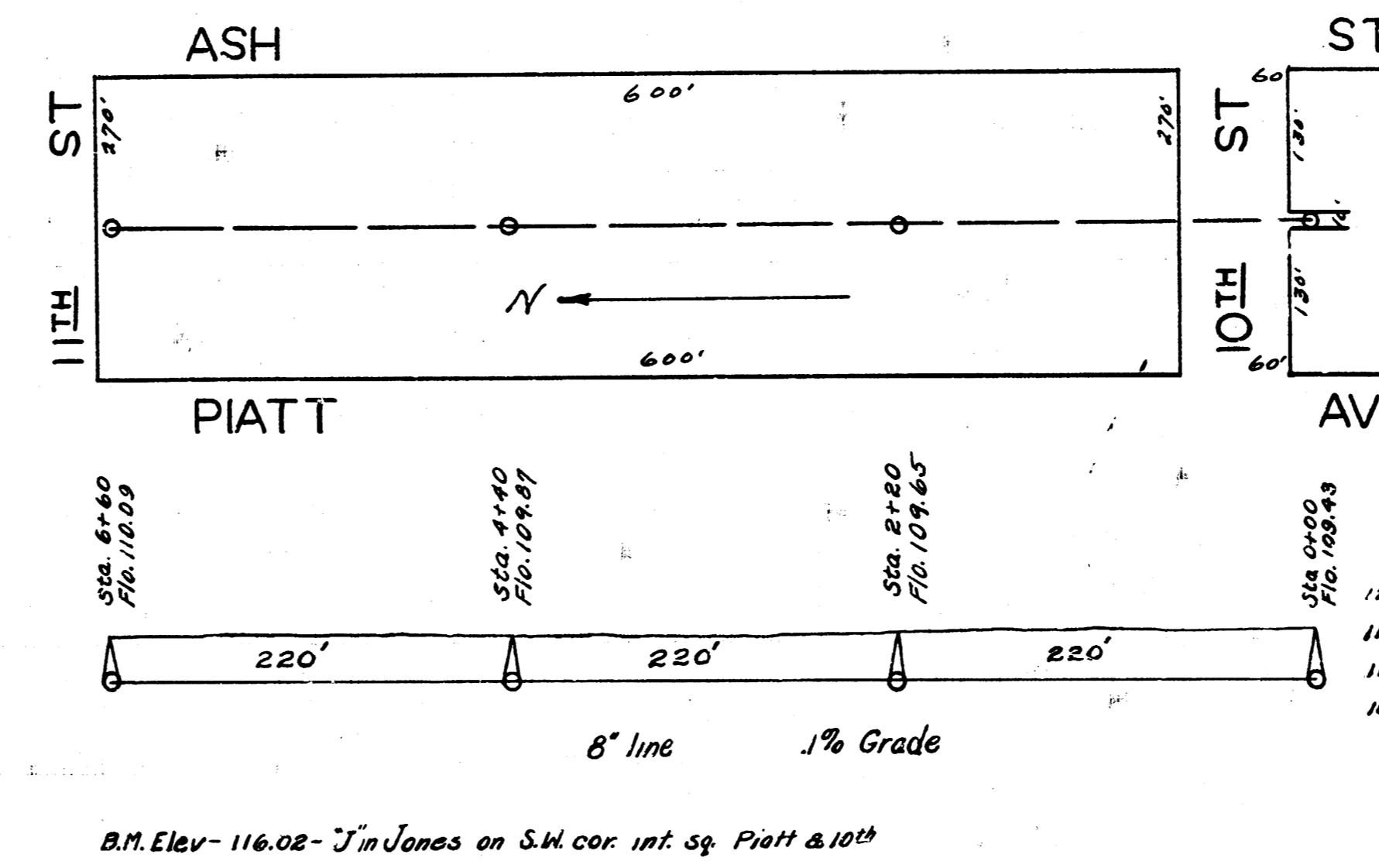
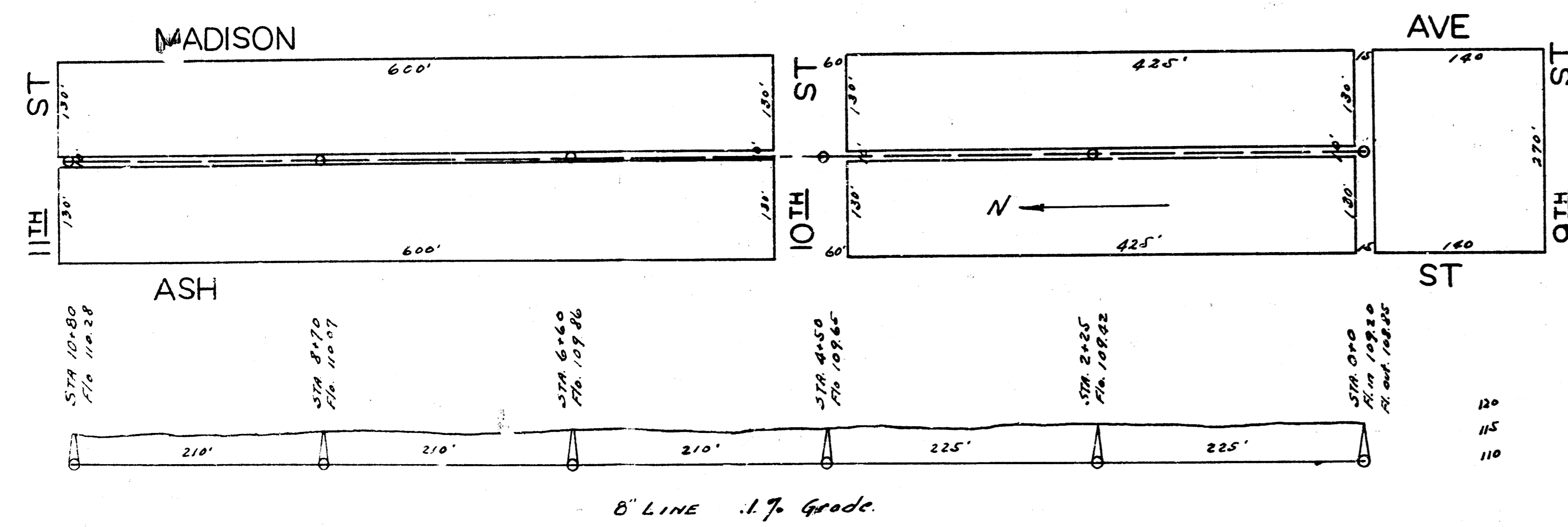
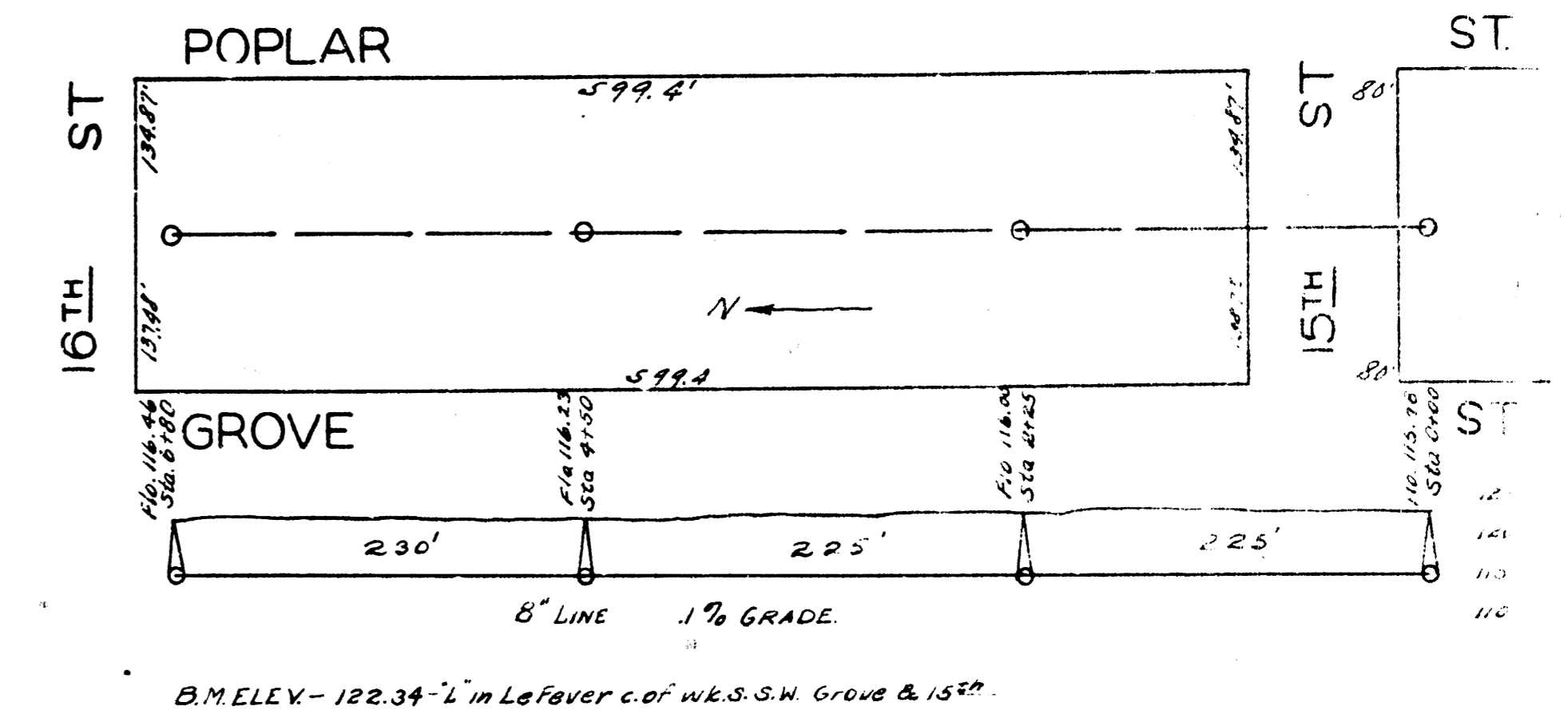
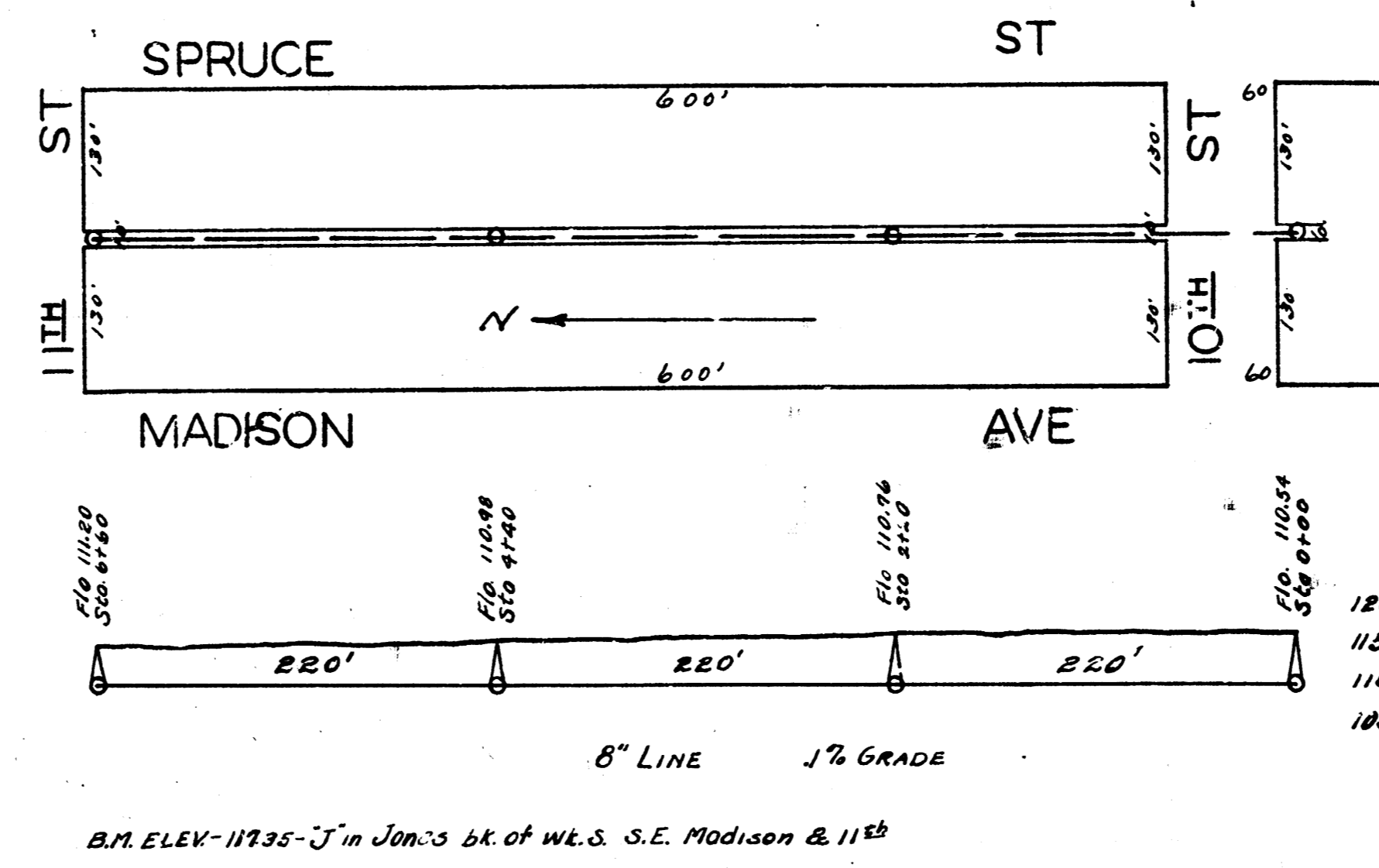
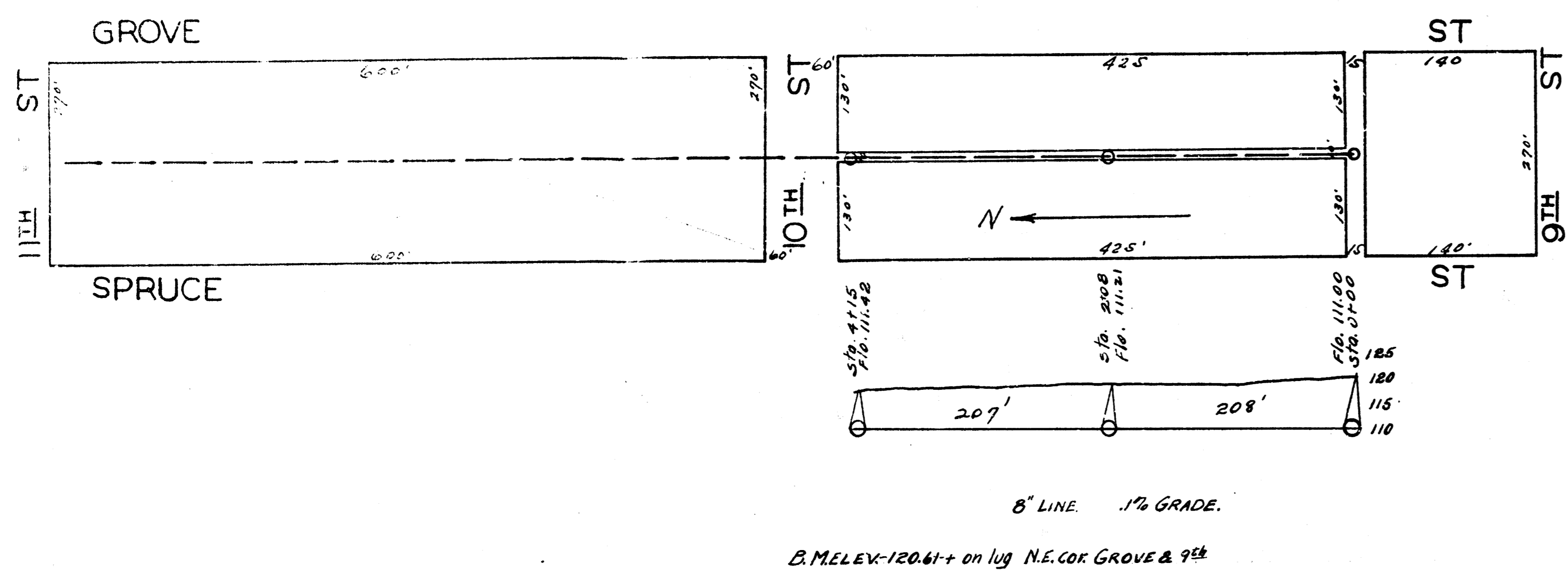


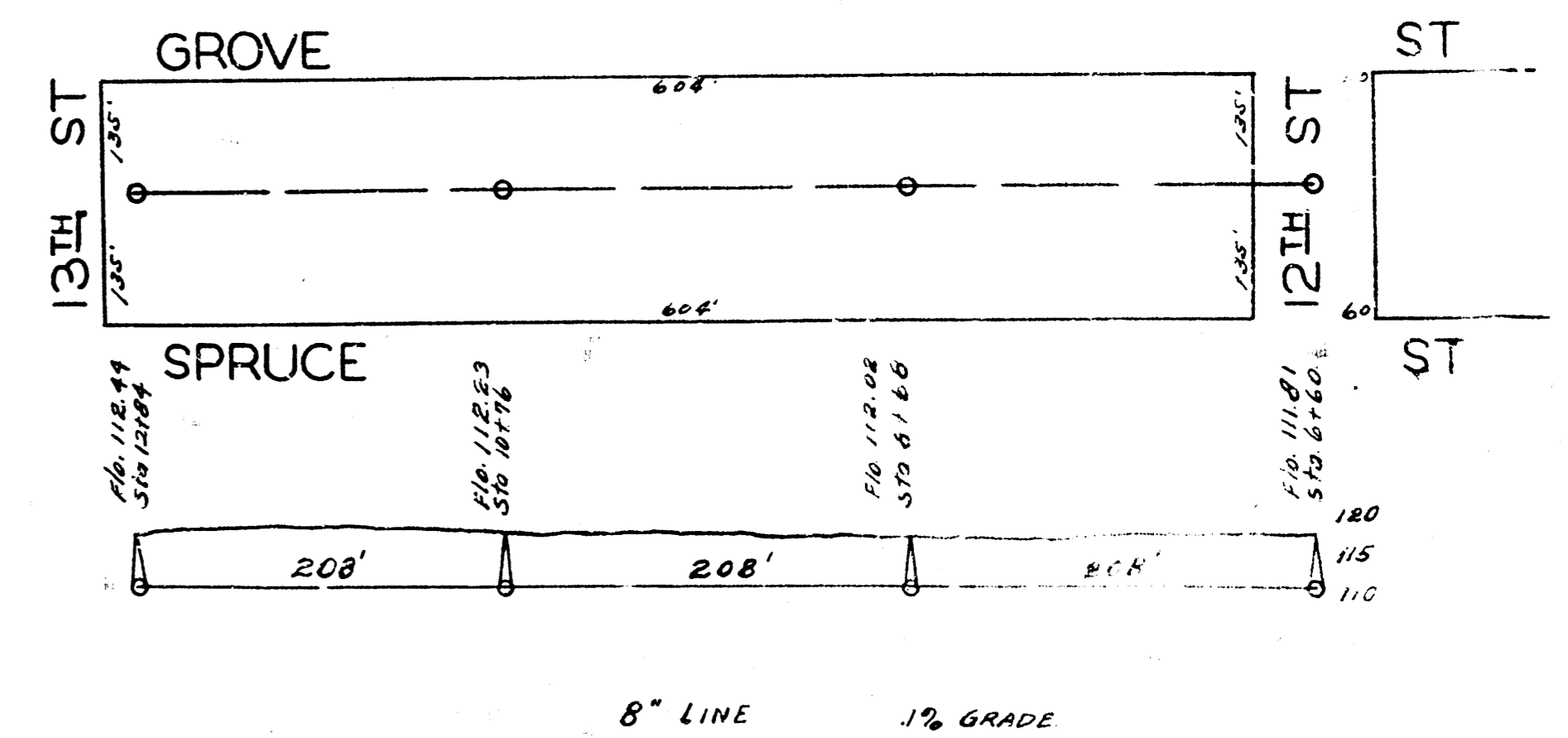
LAT. M, DIST. O, S.S. 12.



B.M. Elev 116.10 W in Wheeler front blk N. N.E. Madison & 9th

B.M. Elev-116.02- J in Jones on S.W. cor. int. sq. Piatt & 10th

B.M. ELEV-120.61- + on lug N.E. cor. GROVE & 9th  
118.88- X in Konster c. of W.L. & S.E. Grove & 11th



LAT. I, DIST. E, S.S. 12.

LAT. H, DIST. E, S.S. 12.