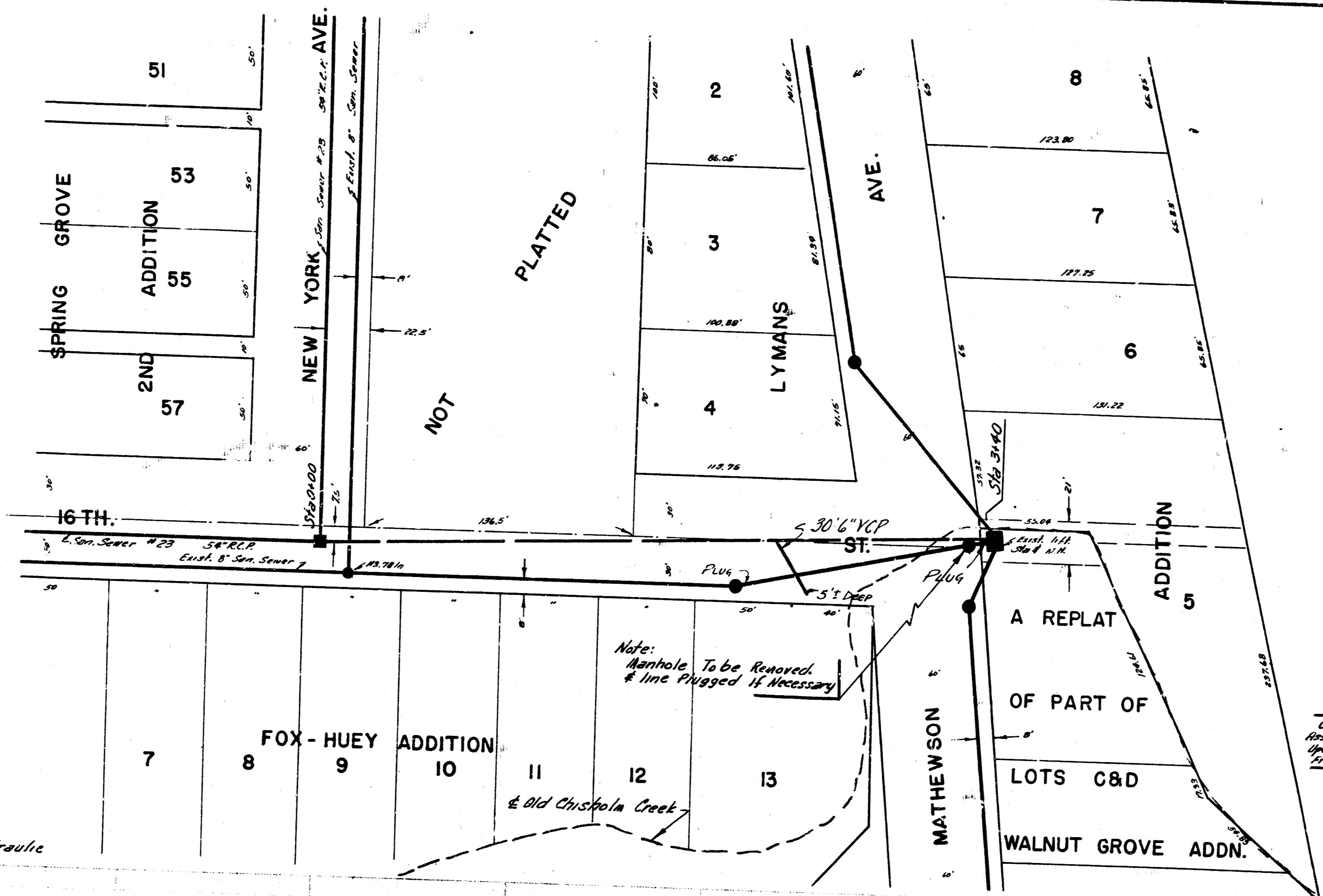
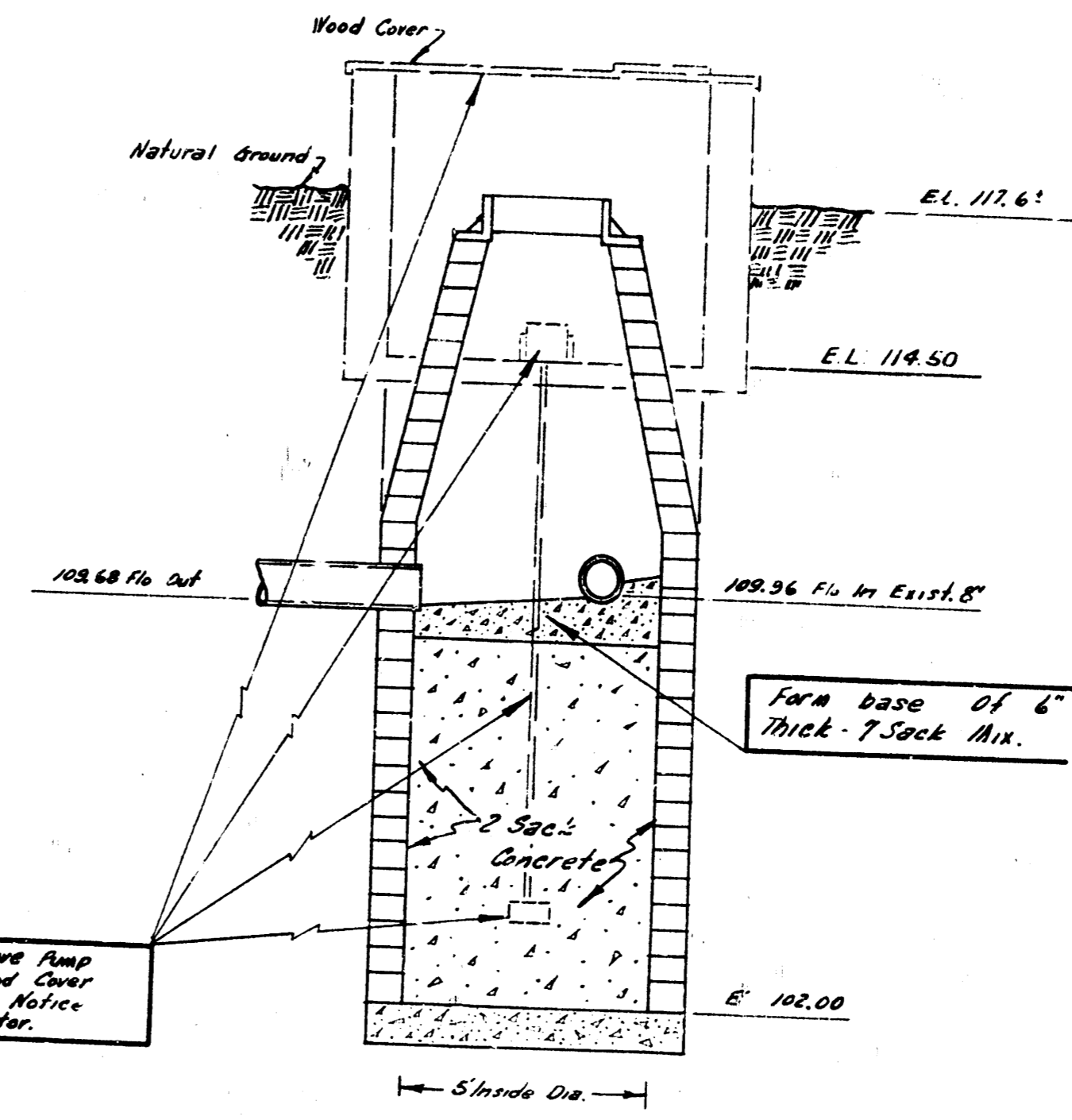


Berry & J. H. Hargy  
 City Engineer  
 Checked  
 Date

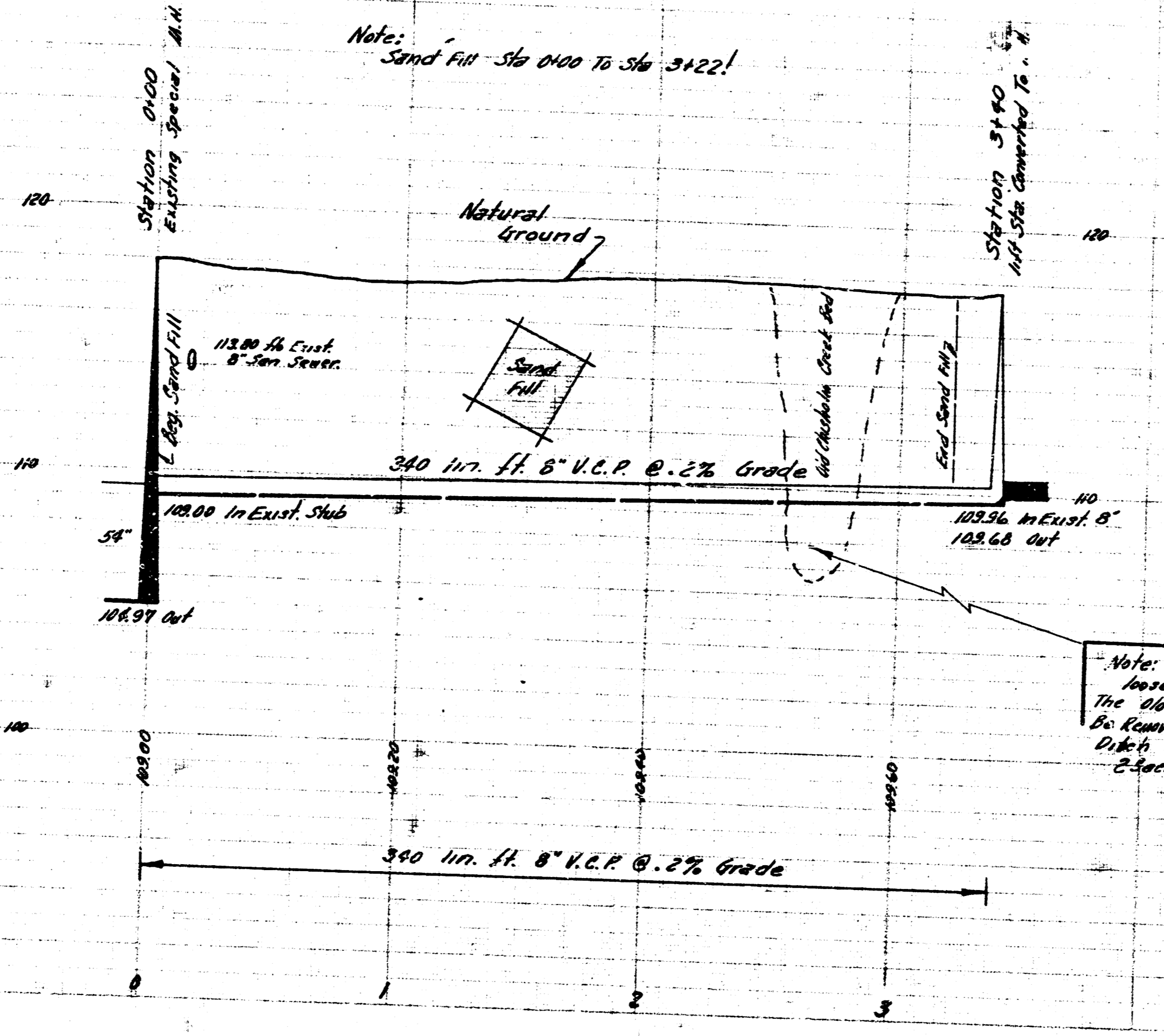


Note To Field Engineer:  
 The lines in Lift Station, which  
 becomes Manhole in New line, to be  
 Checked Prior To Staking this Sewer.



M. 14.92 "x" Top Ch. 2° S. N. End Radius @ N.E. 14th & Hydraulic

Plan Scale 1"=40'  
 Profile Scale 1"=40' Hor. 1"=4' Vertical



Note:  
 Where Fill Encountered Crossing  
 The Old Chisholm Creek And Shall  
 Be Removed To Solid Ground & The  
 Ditch Shall Be Refilled With  
 2" Back Comp. To Bottom of Sewer

Revision of Lateral 10 Submain VSS 1/2  
 & Elimination of Lift Station  
 City of Wichita, Kansas  
 B.E. Smith City Engineer  
 Project No. C25-19 Date: Oct. 1936