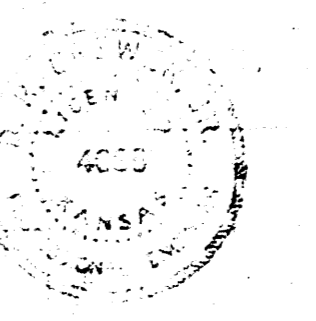
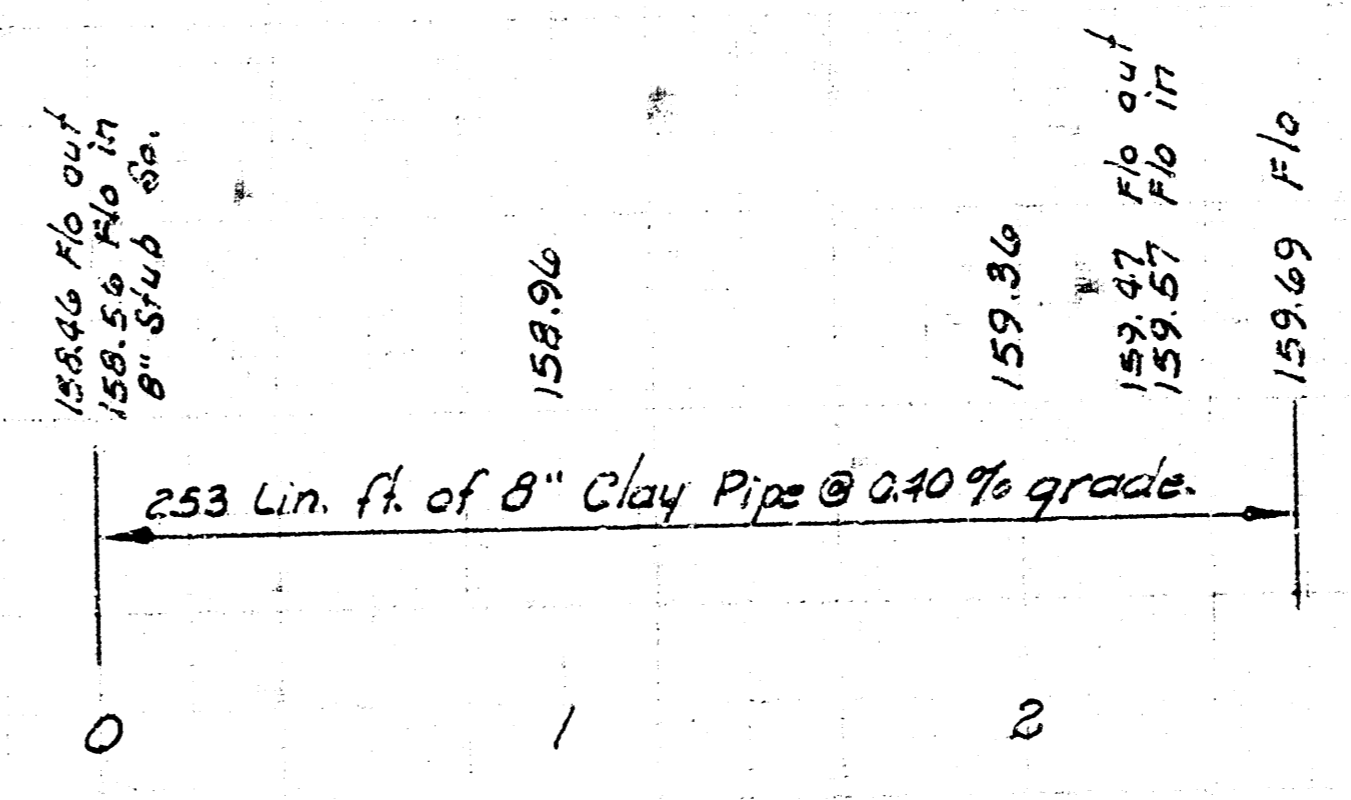
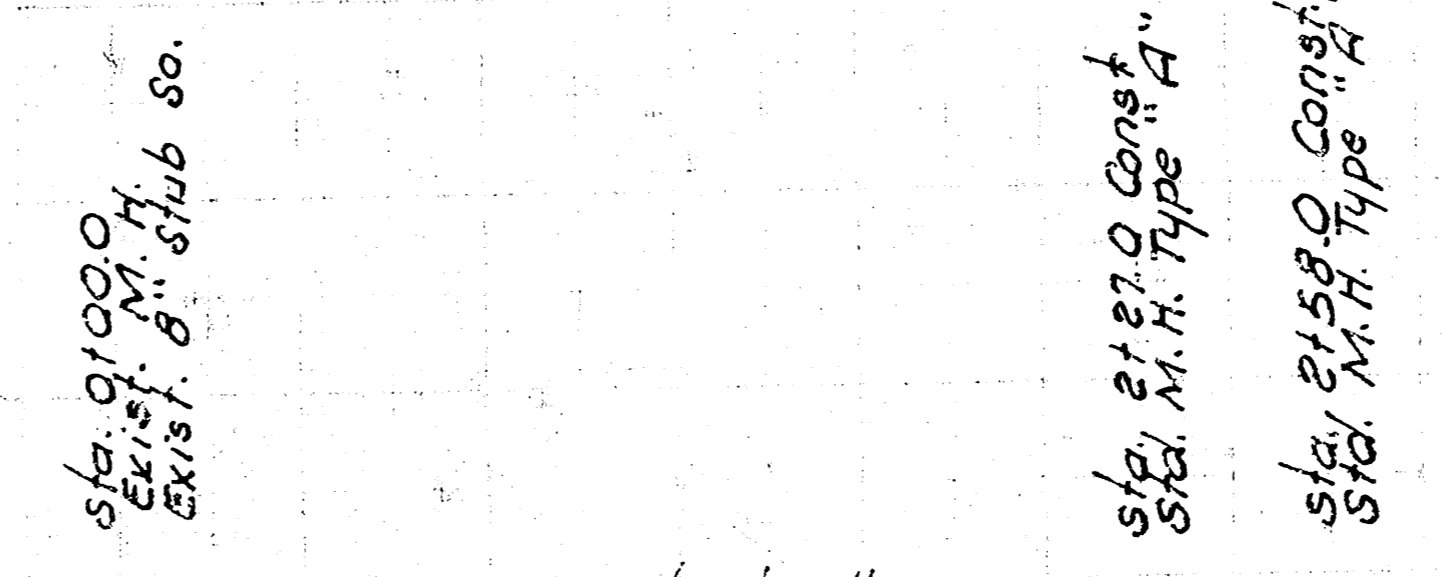


NOTE TO CONTRACTOR
 This project will be constructed under the supervision of the CITY ENGINEER and conforming to the SPECIFICATIONS of the CITY OF WICHITA. The CONTRACTOR will reimburse the City of Wichita for all cost of Engineering, Plans, and Inspection.

B.M. 167.65 S.W. cor.
 conc. base to Mobil
 sign on N.E. cor.
 Kellogg & Rock Rd.

Plan Scale 1" = 40' Horiz.
 Profile Scale 1" = 5' Vert.



As Built Final Plans, It-B-3
PHILLIPS PETROLEUM COMPANY
 SANITARY SEWER
 N.W. KELLOGG DR. AND ROCK RD.
 CITY OF WICHITA, KANSAS
 R. W. LINN — CITY ENGINEER
 OCT. 1973, PROJECT NO. B4KBS03056