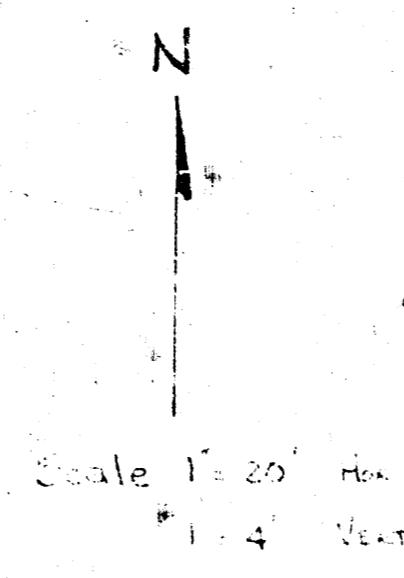


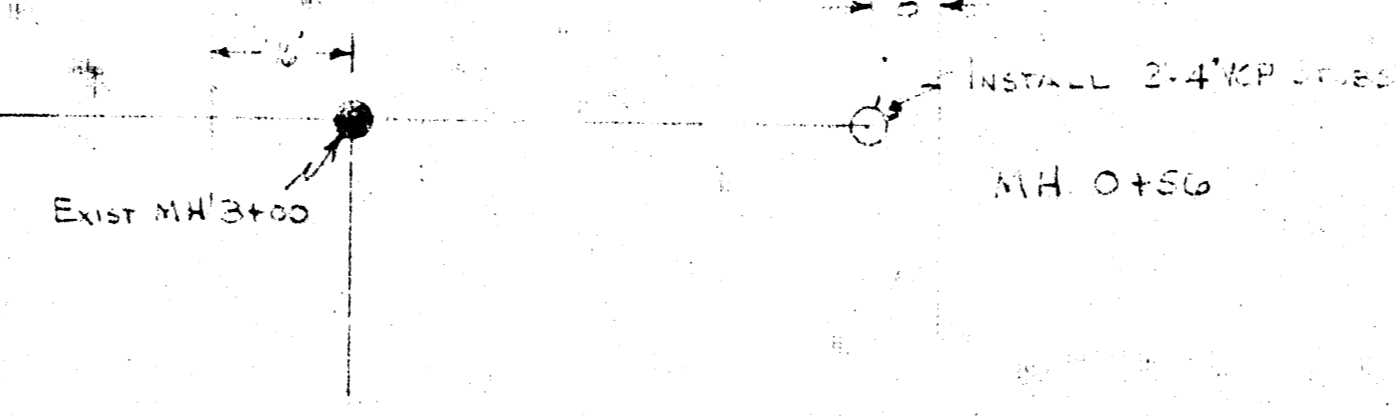
B.M. BRASS CAP TOP OF N.E. WINDMILL COND. BRIDGE  
1/2 MILE E. OF WOODLAND ON HARRY ST.



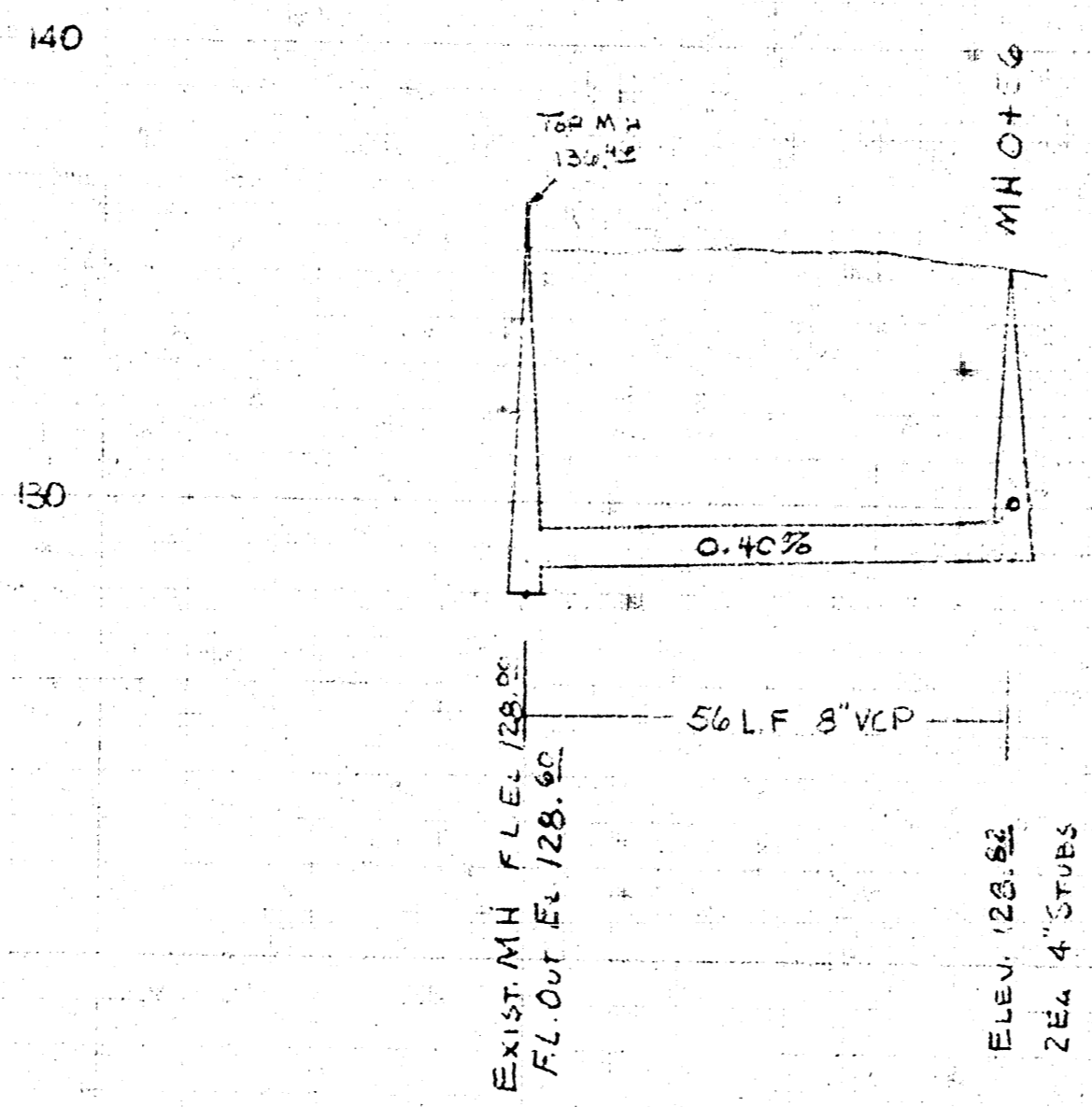
HARRY STREET

GOVERNOUR RD.

APPROVED AS NOTED  
By City Engineer of WICHITA  
Date: 2.2.72  
Directly Approached



NOTE TO CONTRACTOR  
This project is to be constructed under the supervision of the ENGINEER and conform to the SPECIFICATIONS of the City of WICHITA. The CONTRACTOR shall advise the City of WICHITA of any changes or deviations and Inspection.



SANITARY SEWER

FOR  
TRAIL-N-SAIL, INC.  
7215 E HARRY ST  
WICHITA, KANSAS  
MID STATES CONST. Co., Inc.  
JUNE-1972 AALB302016