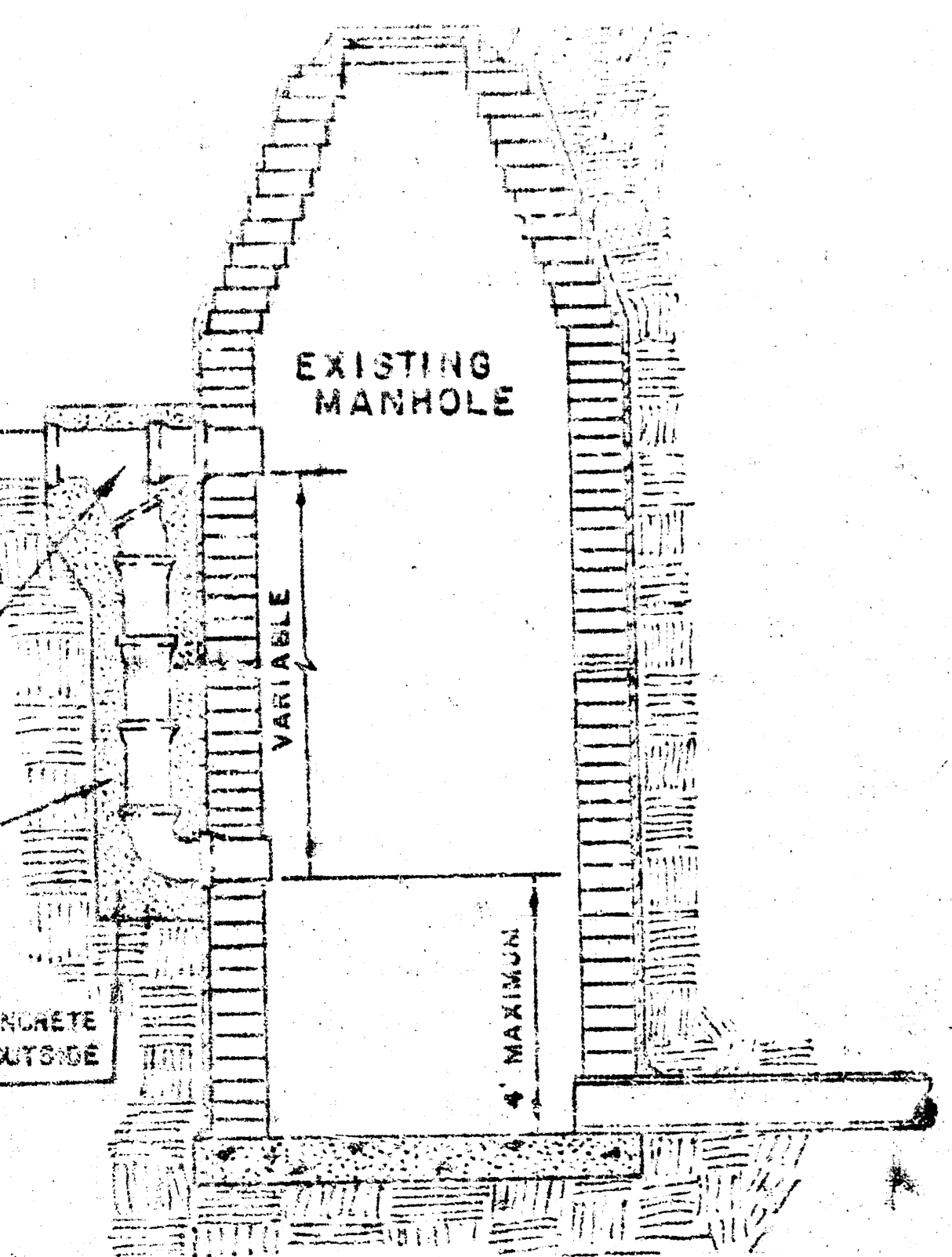
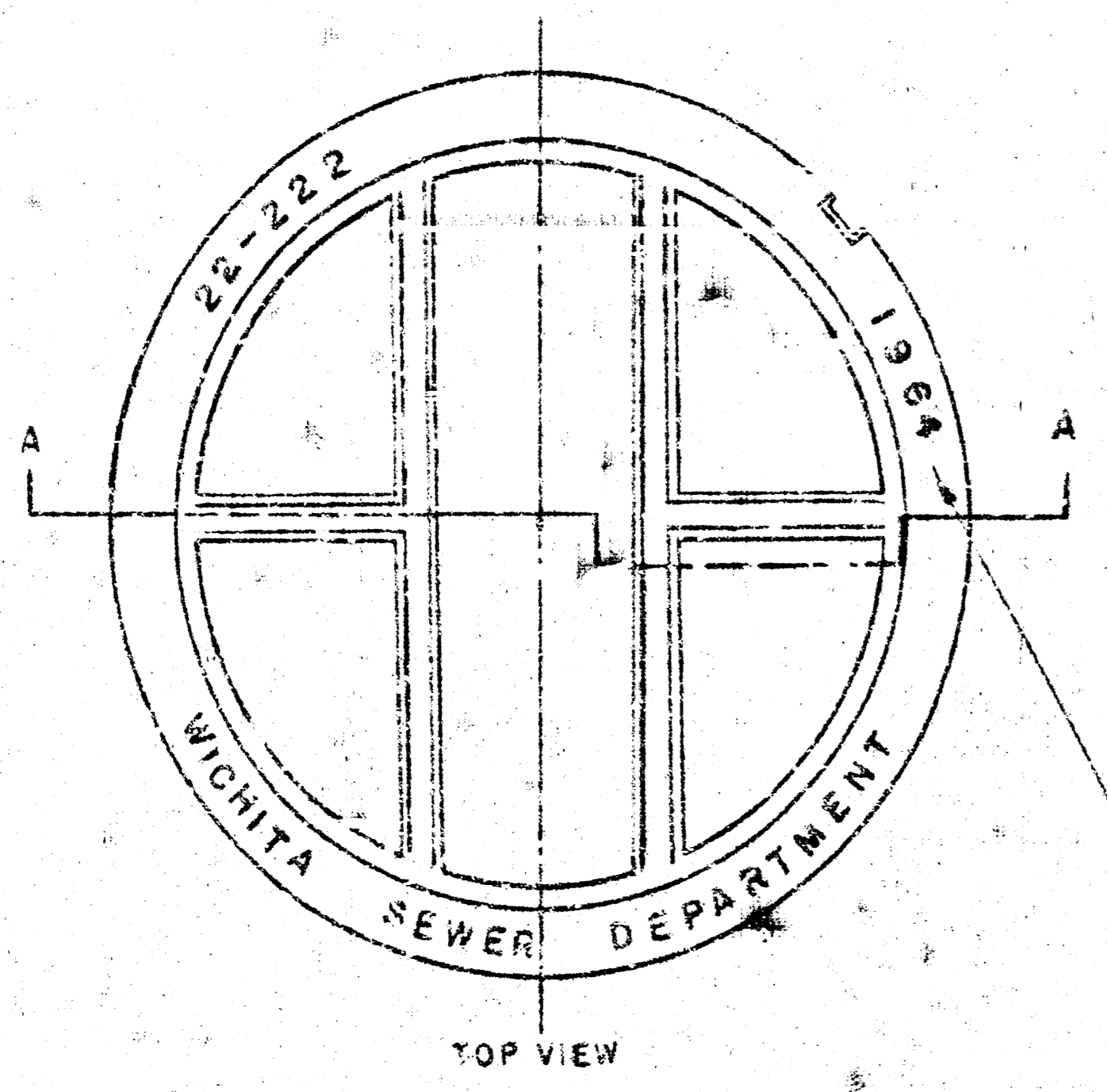


STANDARD MANHOLE TYPE "A" STANDARD MANHOLE TYPE "B" DROP MANHOLE TYPE "A" DROP MANHOLE TYPE "B" OUTSIDE DROP MANHOLE TYPE "A" OUTSIDE DROP MANHOLE TYPE "B"

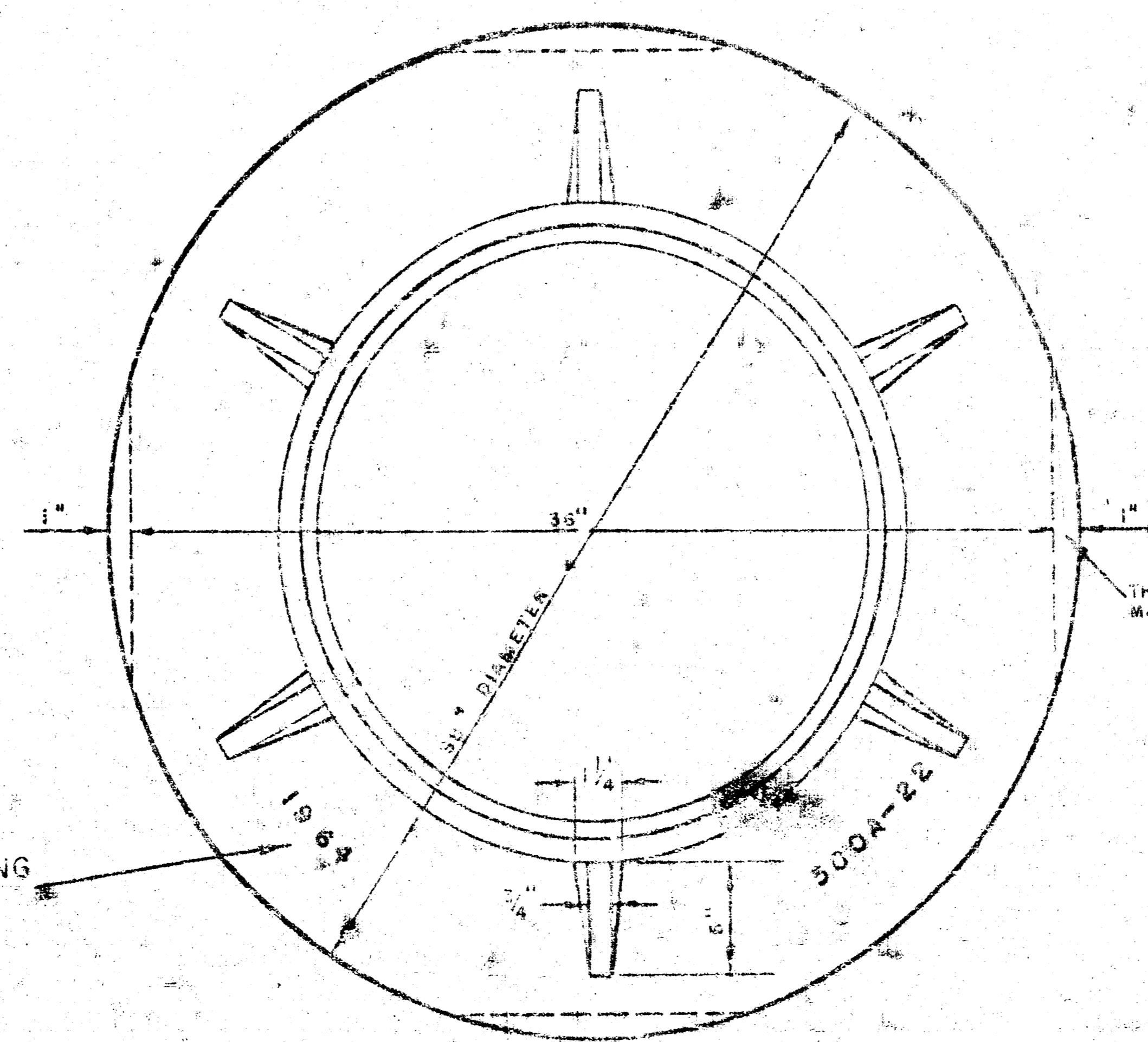
* DRAW = 3' ON 5' DIA. M.H.



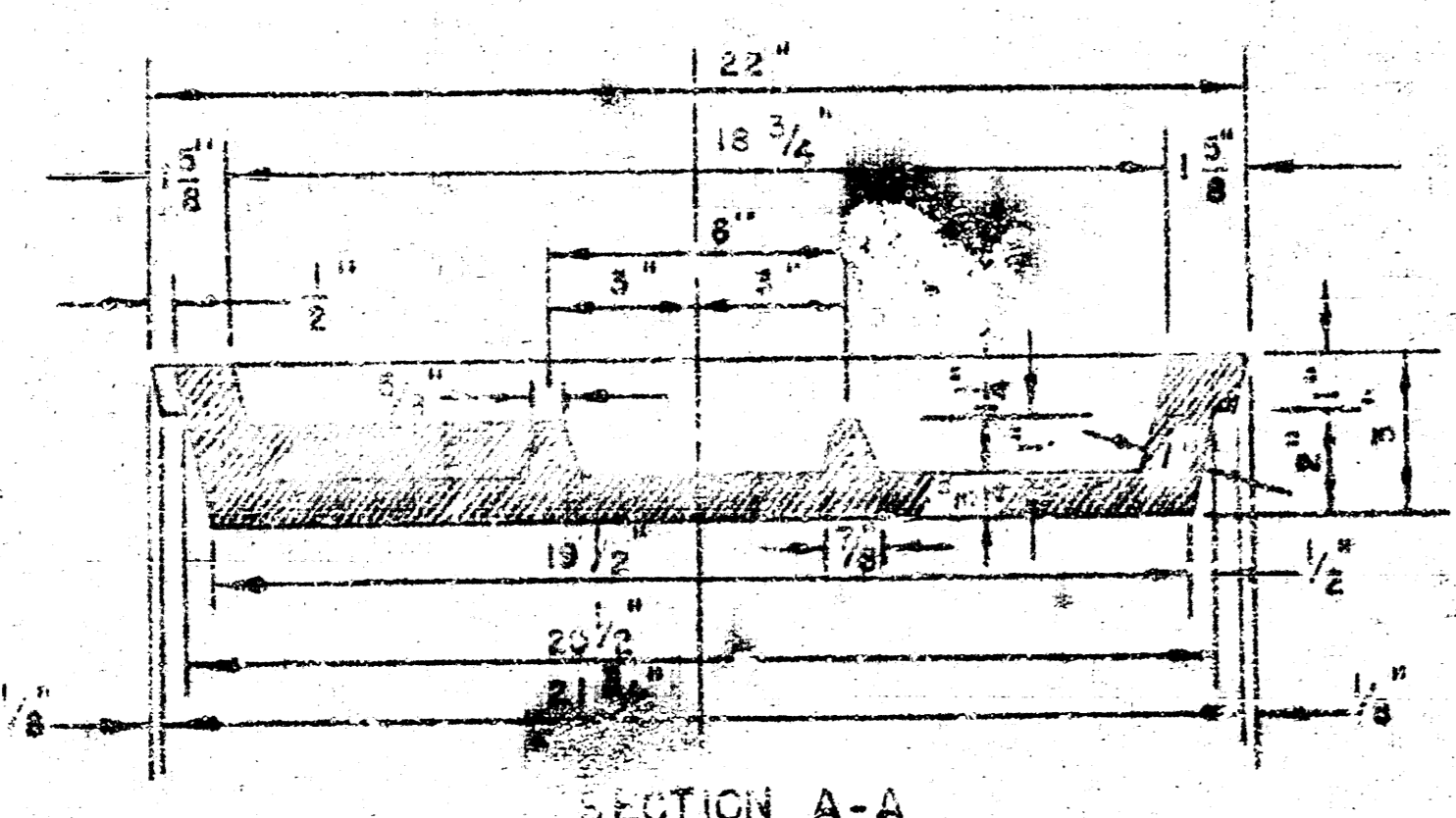
DETAIL OF DROP STACK FOR EXISTING MANHOLES IN GROUND WATER



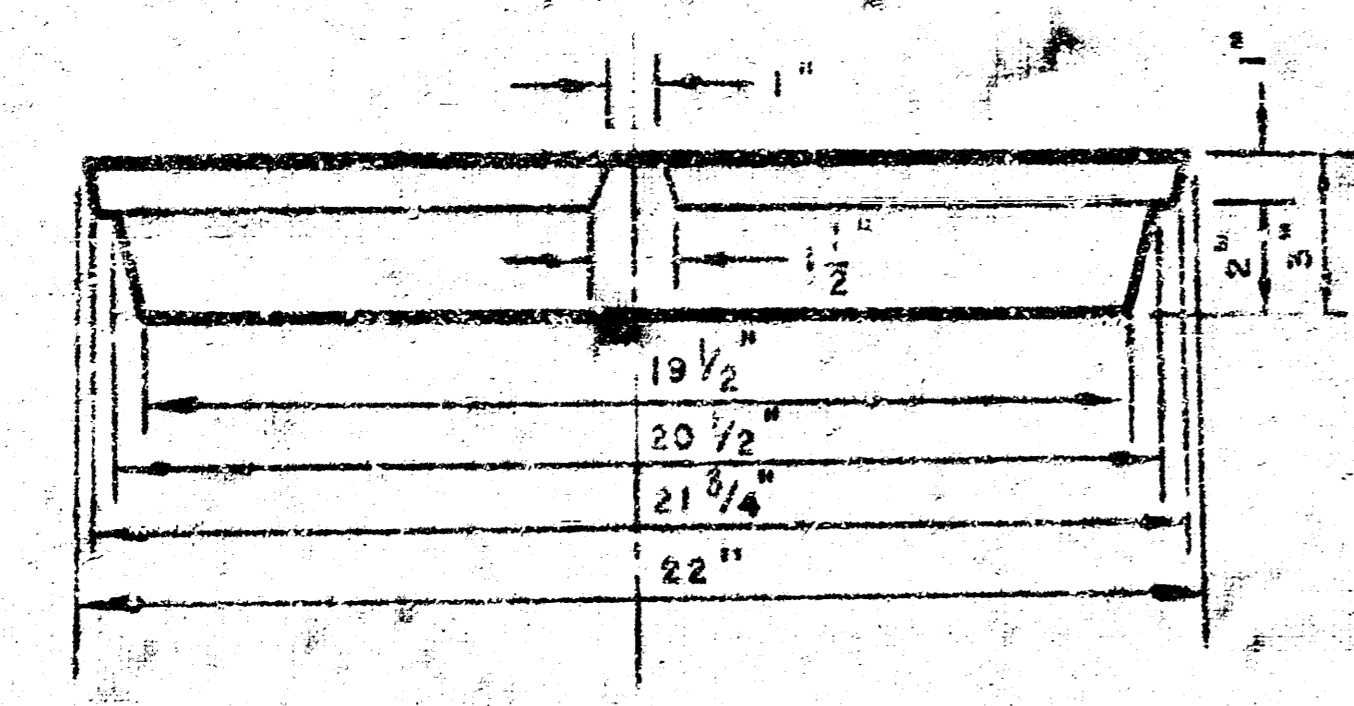
TOP VIEW MANHOLE COVER WEIGHT 110 lbs.



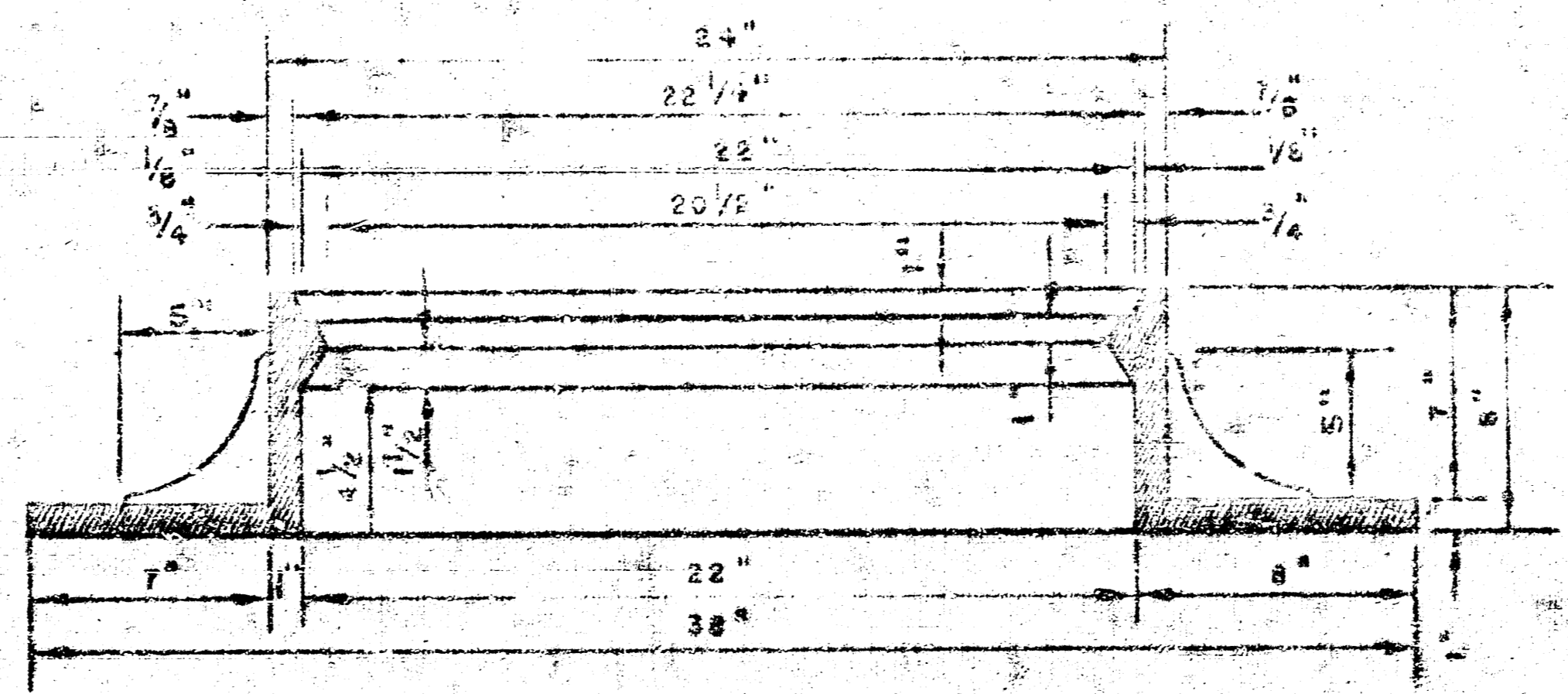
TOP VIEW MANHOLE RING WEIGHT 355 lbs.



SECTION A-A MANHOLE COVER

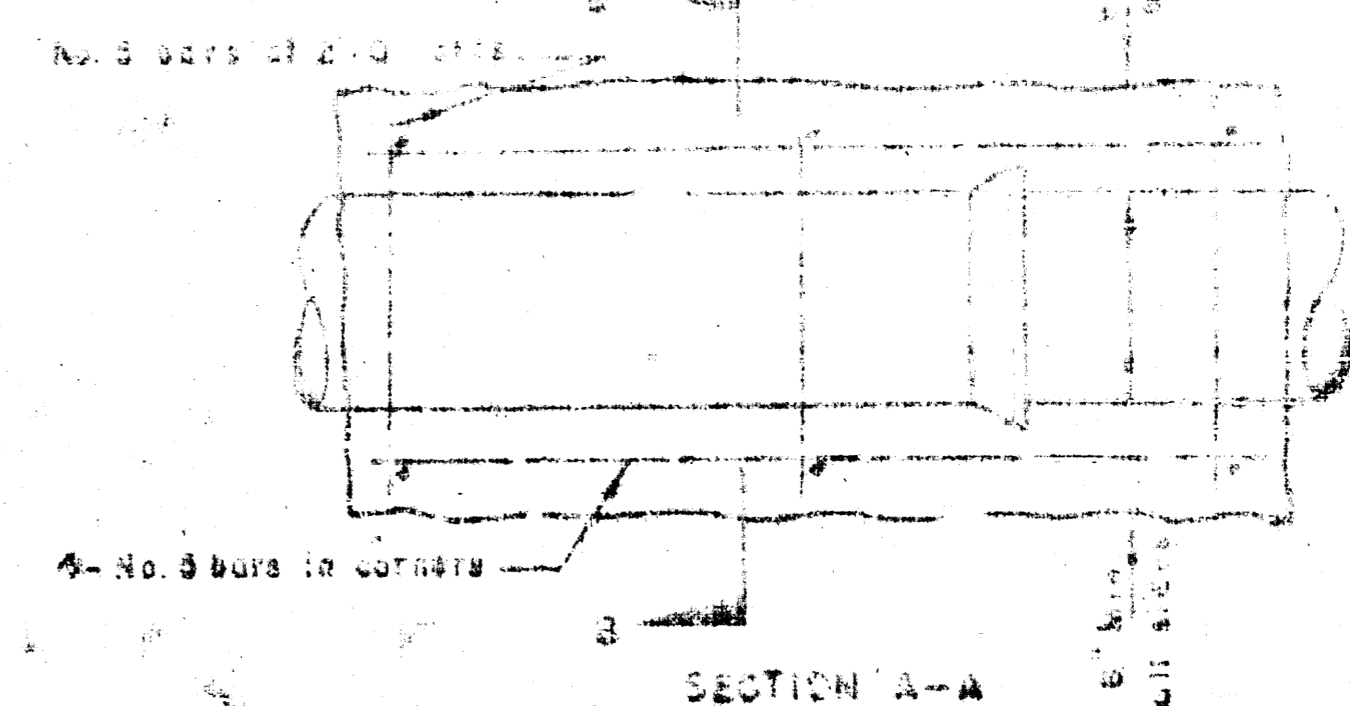


SIDE VIEW

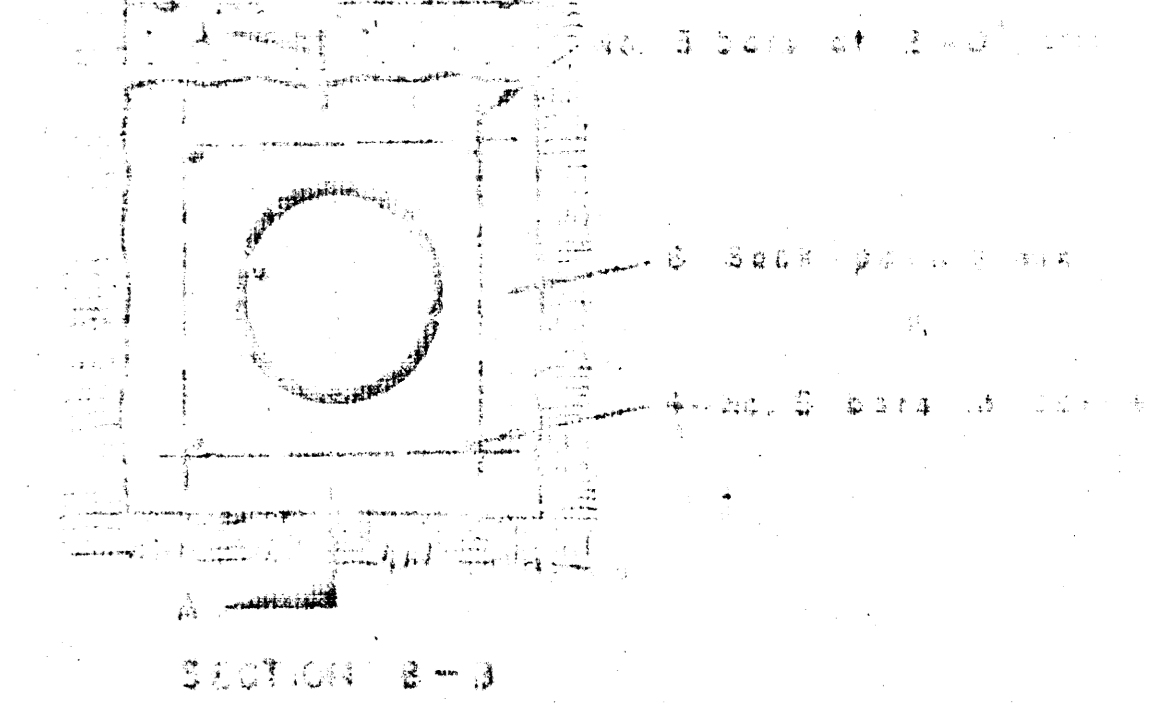


SECTION MANHOLE RING

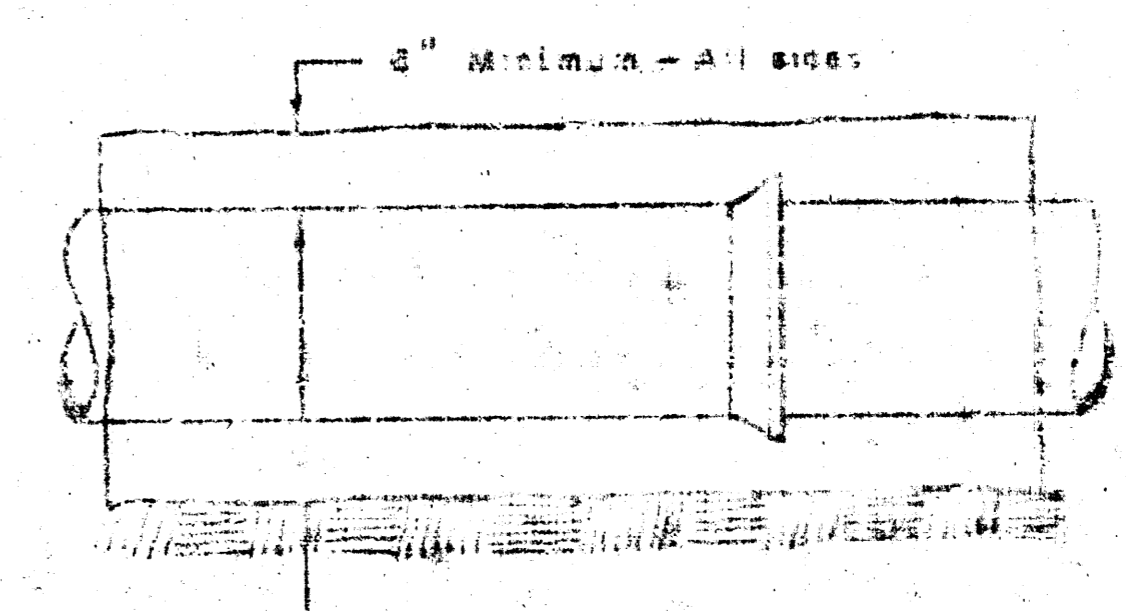
OUTSIDE CIRCUMFERENCE OF COVER AND THE INNER FACE AND SEAT OF RING TO BE MACHINED FIT.



SECTION A-A REINFORCED CONCRETE ENCASUREMENT FOR STRENGTH

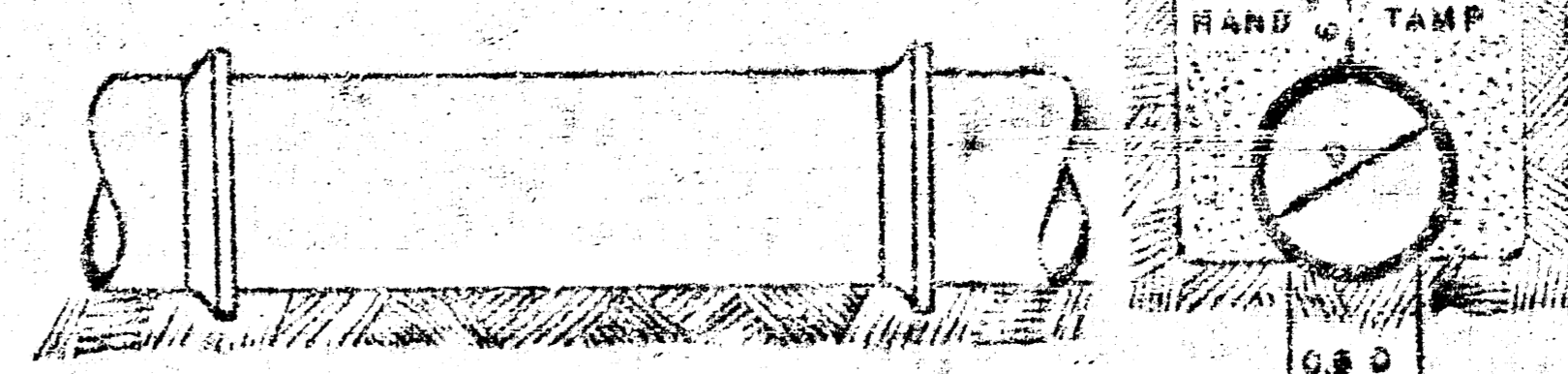


SECTION B-B CONCRETE ENCASUREMENT FOR COVER



DETAIL OF CONCRETE CRADLE

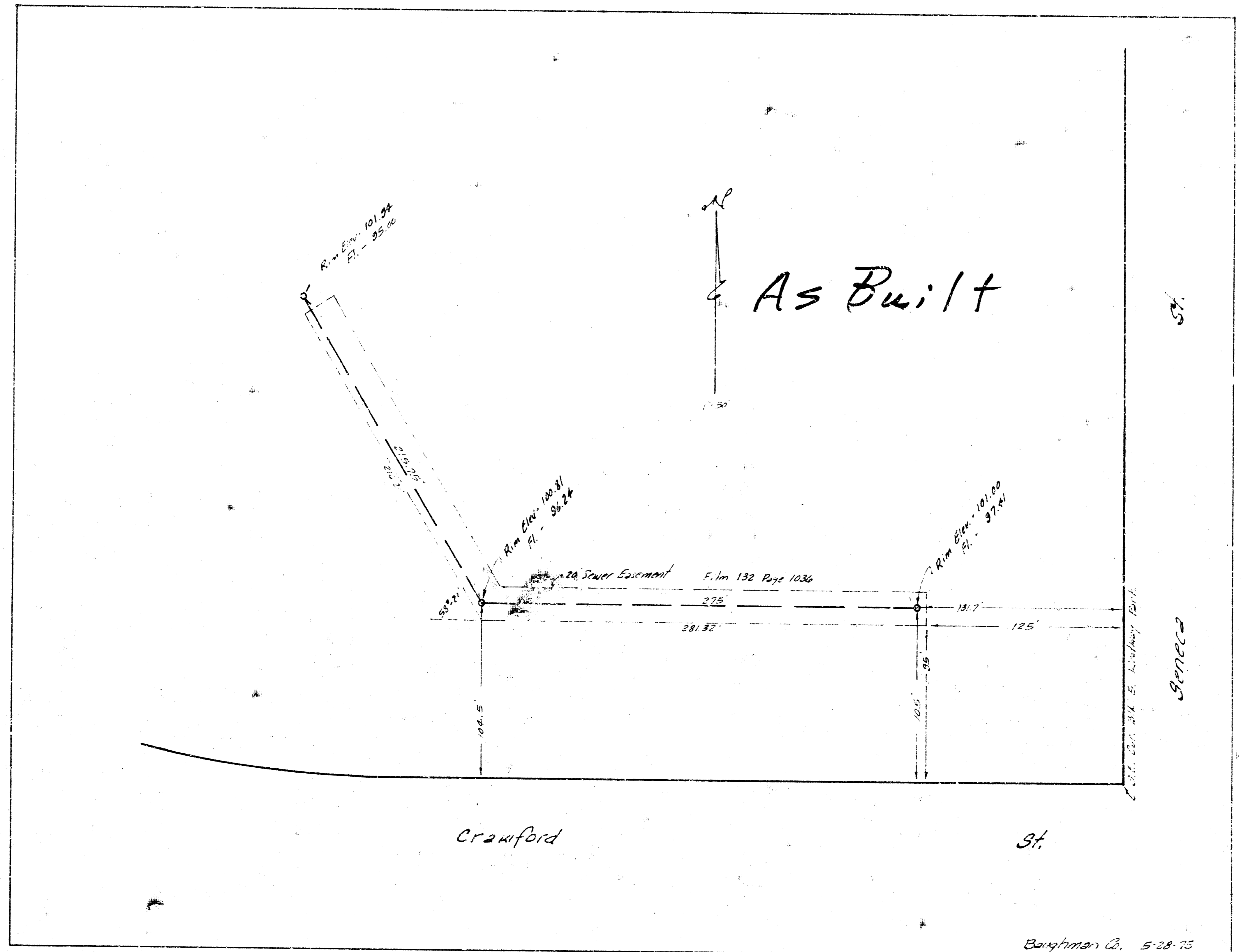
ORDINARY BEDDING METHOD FOR CLAY PIPE



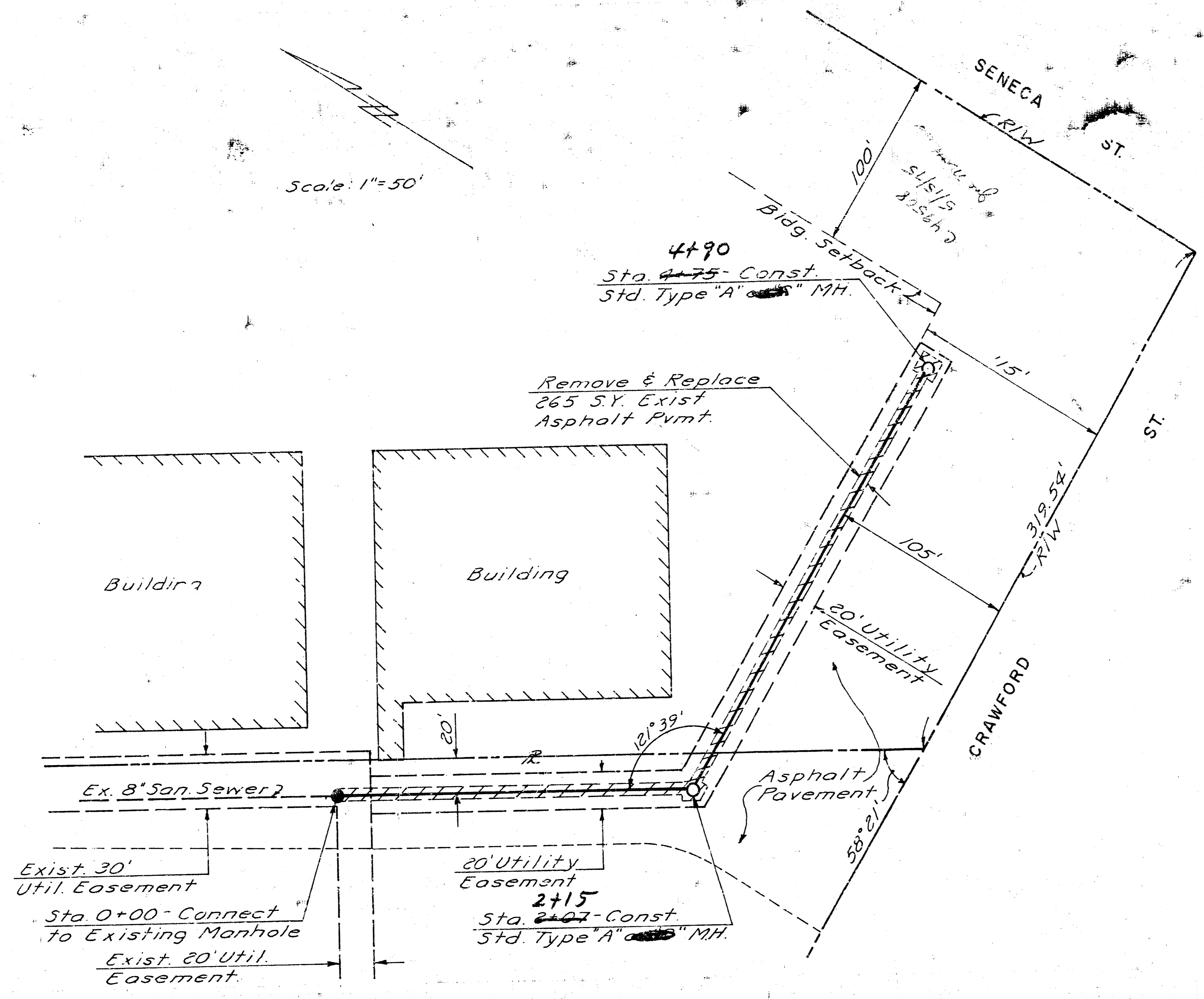
ORDINARY BEDDING METHOD FOR REINFORCED CONCRETE PIPE

MANHOLES
 THE CONCRETE USED FOR MORTAR IN MANHOLES SHALL CONTAIN 2 SACKS OF CEMENT PER CUBIC YARD.
 STANDARD MANHOLES AND DROP MANHOLES, REGARDLESS OF DIAMETER, SHALL BE BID AT ONE PRICE AS STANDARD MANHOLES.
 SINGLE OR DOUBLE OUTSIDE DROP MANHOLES SHALL BE BID AT ONE PRICE AS OUTSIDE DROP MANHOLES.
 ALL MANHOLES WITH PIPES LARGER THAN 24" SHALL BE 5' DIAMETER UNLESS OTHERWISE SPECIFIED ON PLAN. ALL M.H.'S WITH PIPES 24" & SMALLER SHALL BE 4' DIA.

WESTWAY SHOPPING CENTER
 DETAILS OF SEWER APPURTENANCES
 ADOPTED AS STANDARD DESIGN
 BY
 ENGINEERING DIVISION
 CITY OF WICHITA, KANSAS
 R. W. LINN CITY ENGINEER
 1964



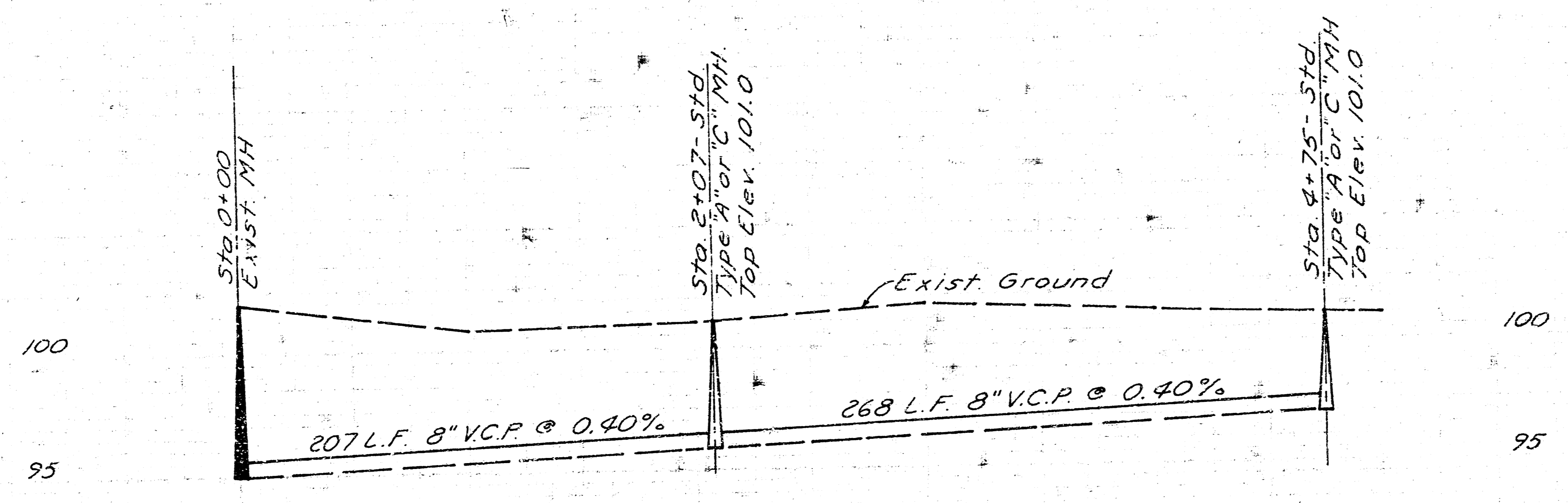
Scale: 1"=50'



2-26-75
 APPROVED AS NOTED
 By CITY ENGINEER OF WICHITA
 Sanitary Sewers D. E. S.
 Storm Sewers _____
 Driveway Approaches _____

NOTE TO CONTRACTOR
 This project will be constructed under the supervision of the CITY ENGINEER and controlled by the GRADING DIVISION of the CITY OF WICHITA. The CONTRACTOR will insure the City of Wichita for all cost of Engineering and inspection.

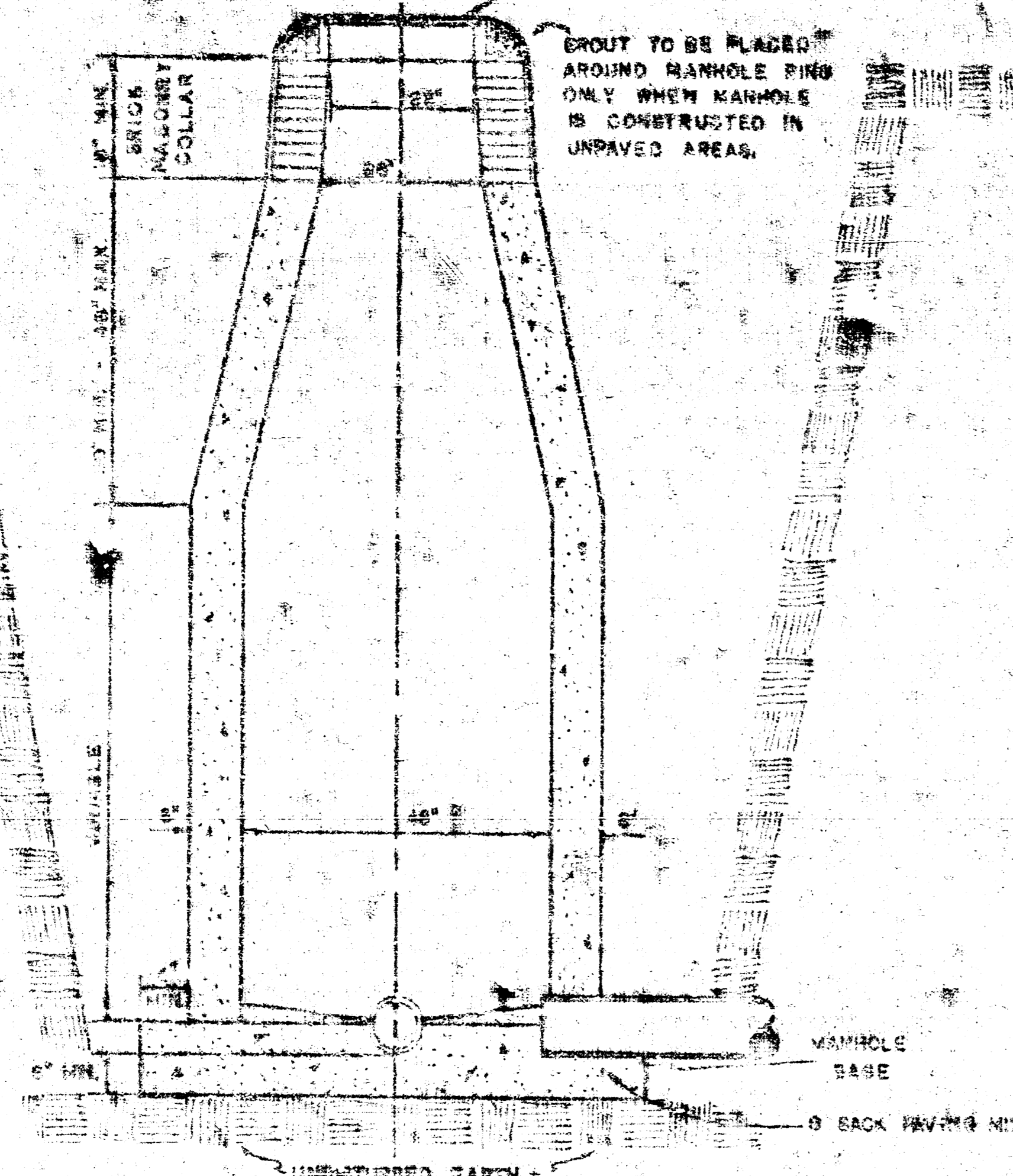
B.M. - Rim of Exist. MH
 Sta. 0+00 - Elev. 101.99



E in 95.00
 E out 95.00
 E 95.40
 E in 95.93
 E out 95.83
 E 96.30
 E 96.70
 E out 97.00

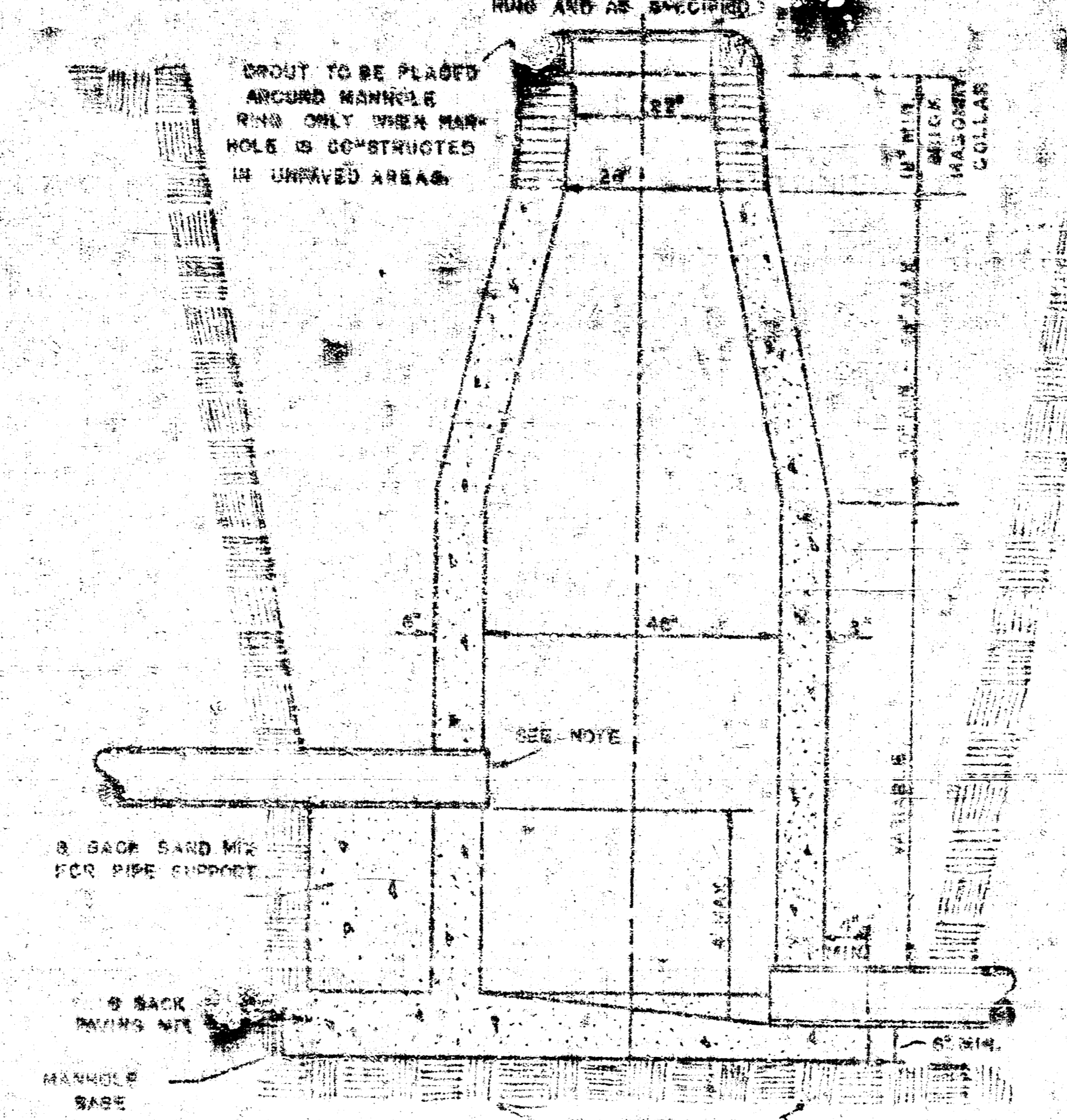
STANDARD MANHOLE, TYPE "C"

RING AND LID AS SPECIFIED



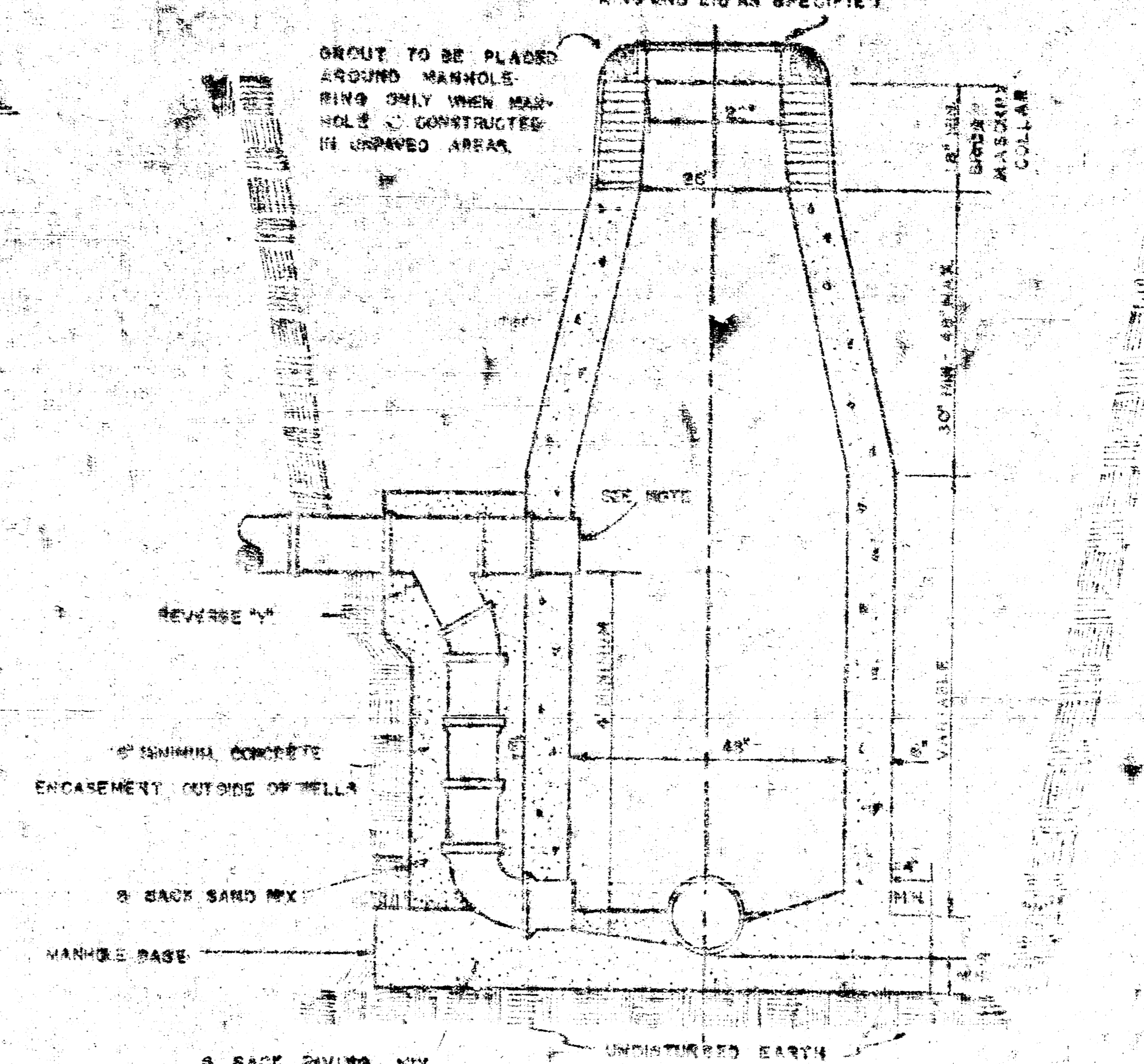
DROP MANHOLE, TYPE "C"

RING AND AS SPECIFIED



OUTSIDE DROP MANHOLE, TYPE "C"

RINGS AND LID AS SPECIFIED



GENERAL NOTES

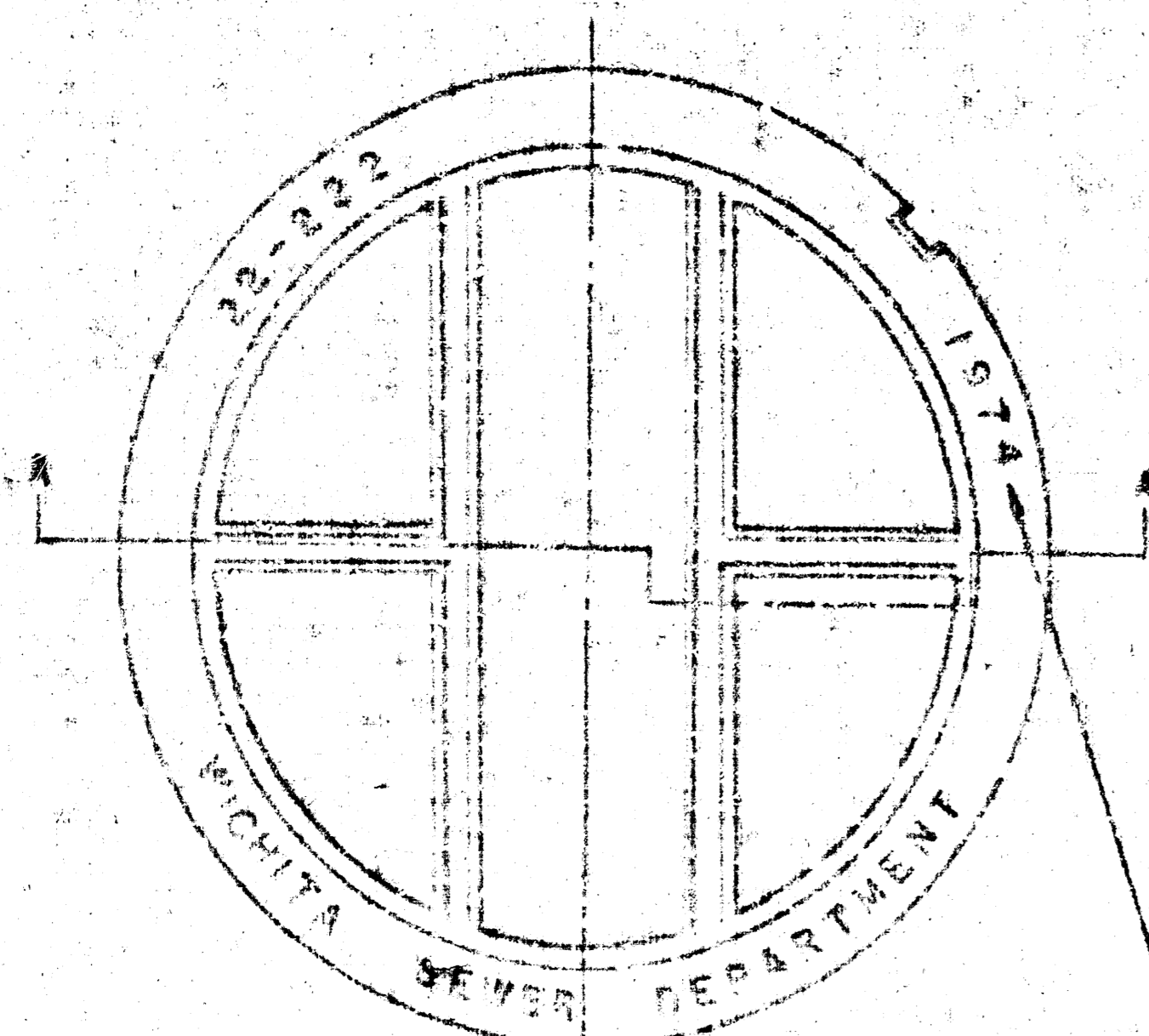
MORTAR USED IN MASONRY CONSTRUCTION SHALL CONTAIN 3 BAGS OF CEMENT PER CUBIC YARD.

STANDARD MANHOLES TYPE "C" AND STANDARD DROP MANHOLES TYPE "C" SHALL BE BUILT AS STANDARD MANHOLES FOR THE TYPE AND DIAMETER INDICATED.

OUTSIDE DROP MANHOLES TYPE "C" SHALL BE BUILT AS STANDARD OUTSIDE DROP MANHOLES FOR THE TYPE AND DIAMETER INDICATED. ALL MANHOLE DIAMETERS WILL BE 4 FT. UNLESS INDICATED OTHERWISE. MANHOLES WITH PIPE SIZES LARGER THAN 24" SHALL BE 5 FT. DIAMETER.

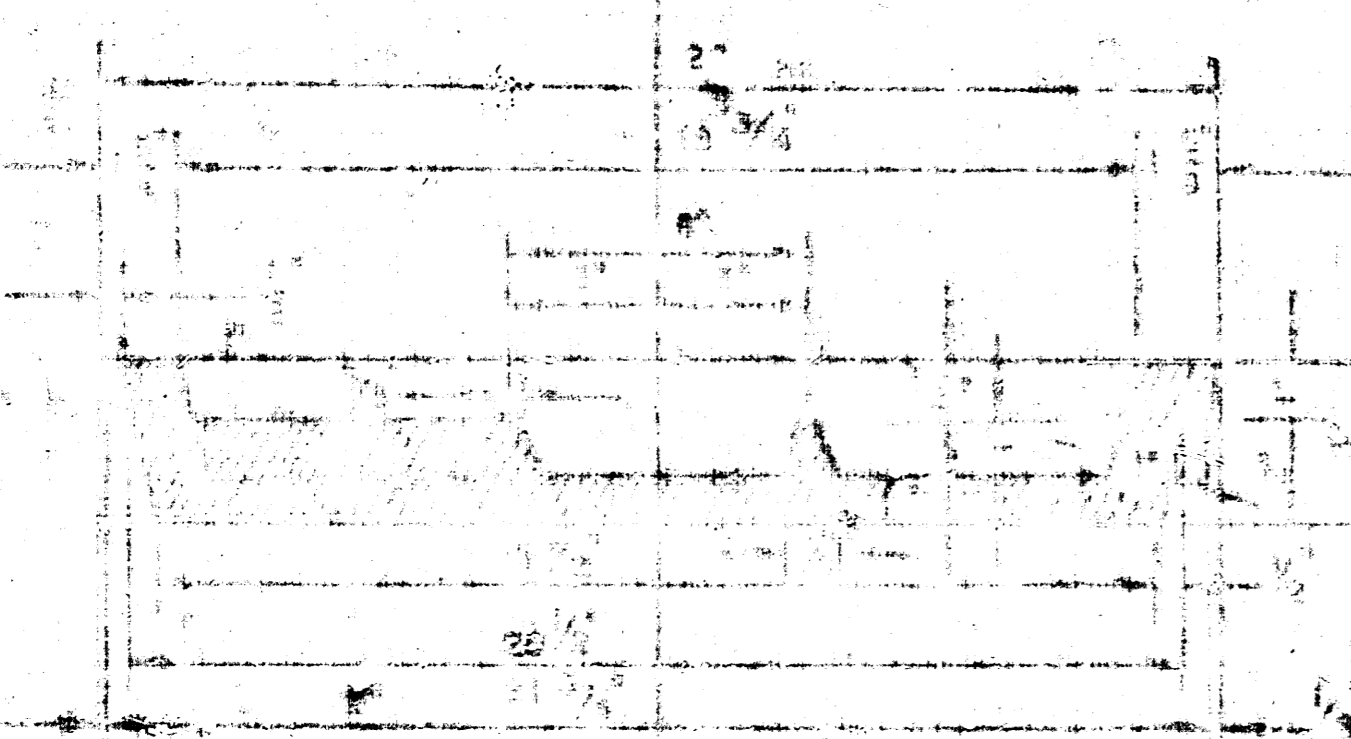
THE FLOORS OF ALL MANHOLES SHALL BE SHAPED TO INCREASE HYDRAULIC EFFICIENCY USING 3 SACK SAND MIX CONCRETE.

CAST IN PLACE CIRCULAR CONCRETE MANHOLES ARE TO BE CONSTRUCTED ONLY ON SEWERS NOT SUBJECT TO DETERIORATION OF CONCRETE DUE TO FORMATION OF HYDROGEN SULFIDE GAS AND IN LOCATIONS WHERE IT IS OBVIOUS THAT ANY ADJUSTMENT OF THE MANHOLE TOP ELEVATION WHICH MAY BE NECESSARY WILL NOT REQUIRE MODIFICATION OF THE CONCRETE PARAPET.

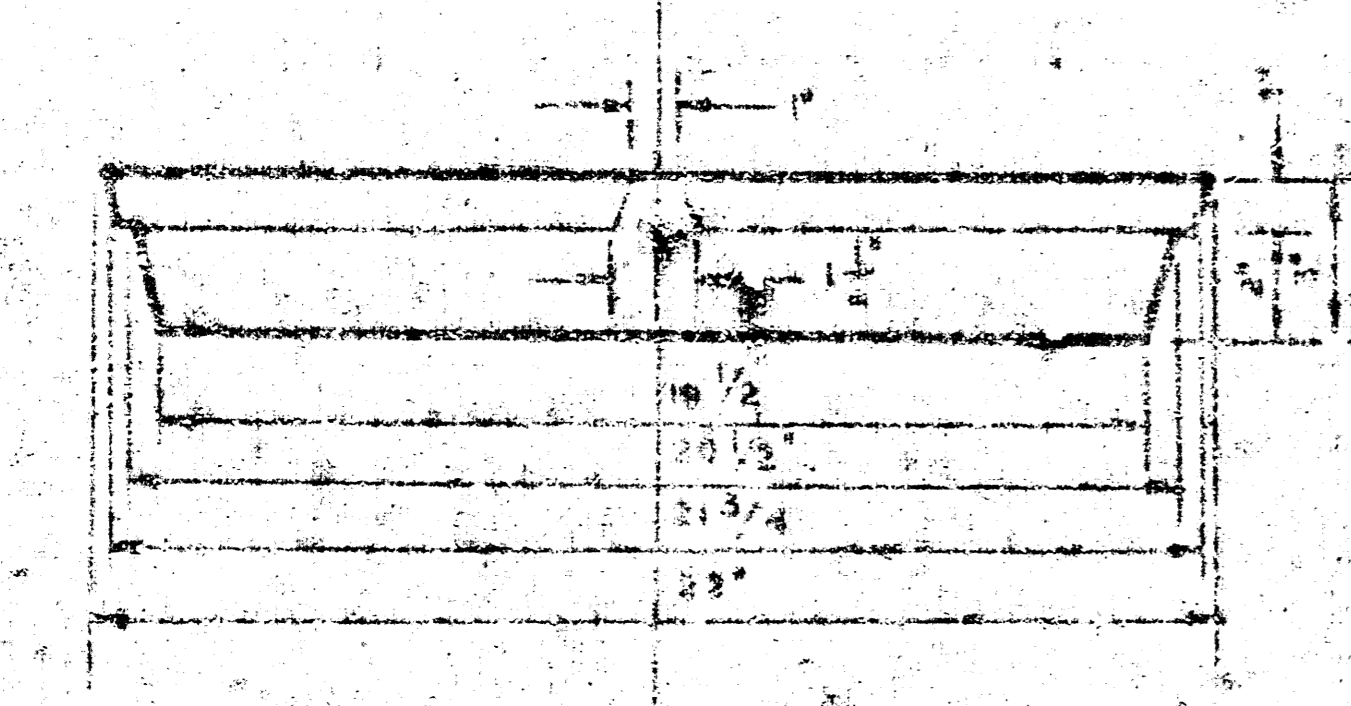


MANHOLE COVER

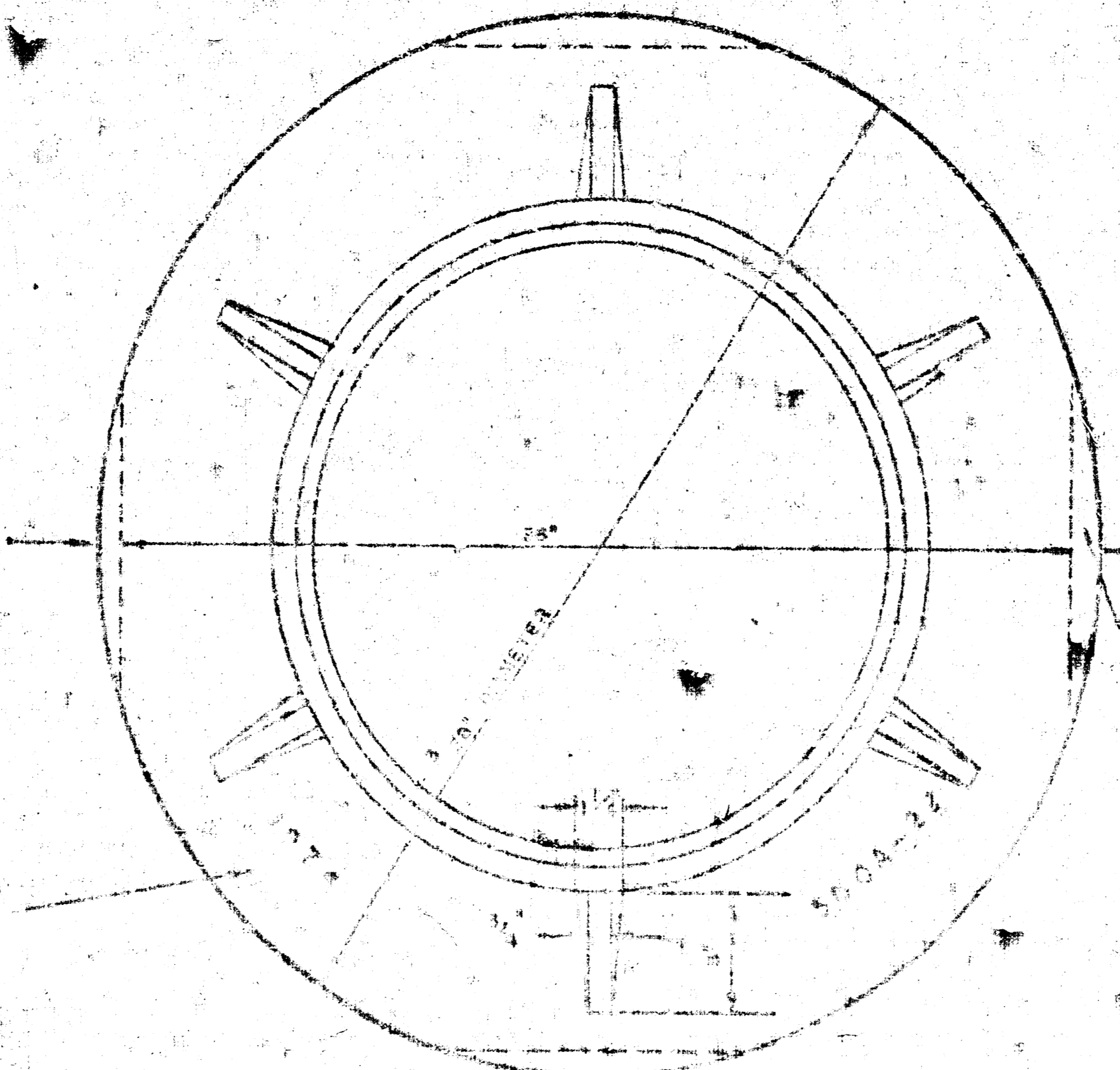
WEIGHT 125 LBS.



MANHOLE COVER

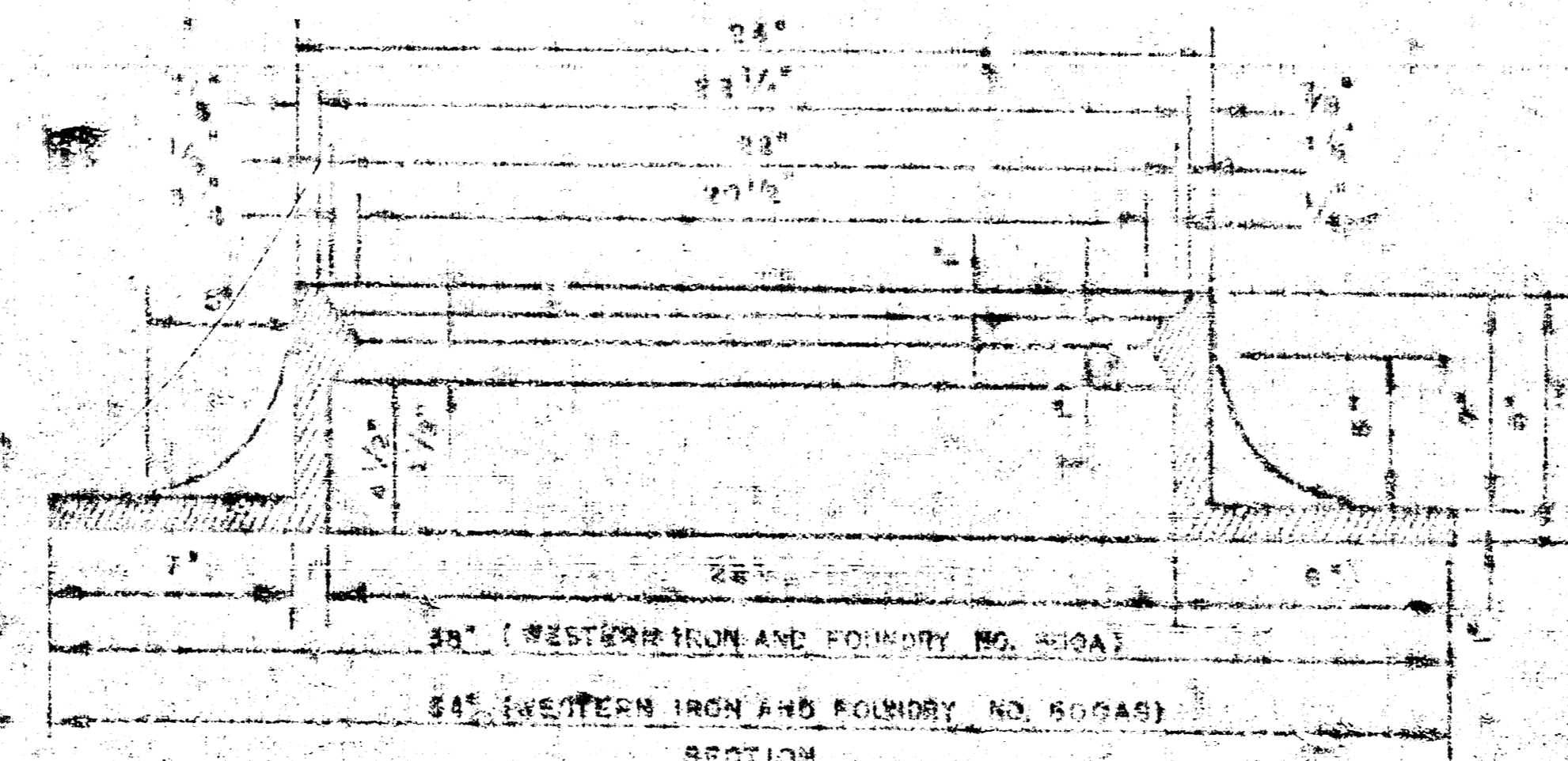


MANHOLE COVER

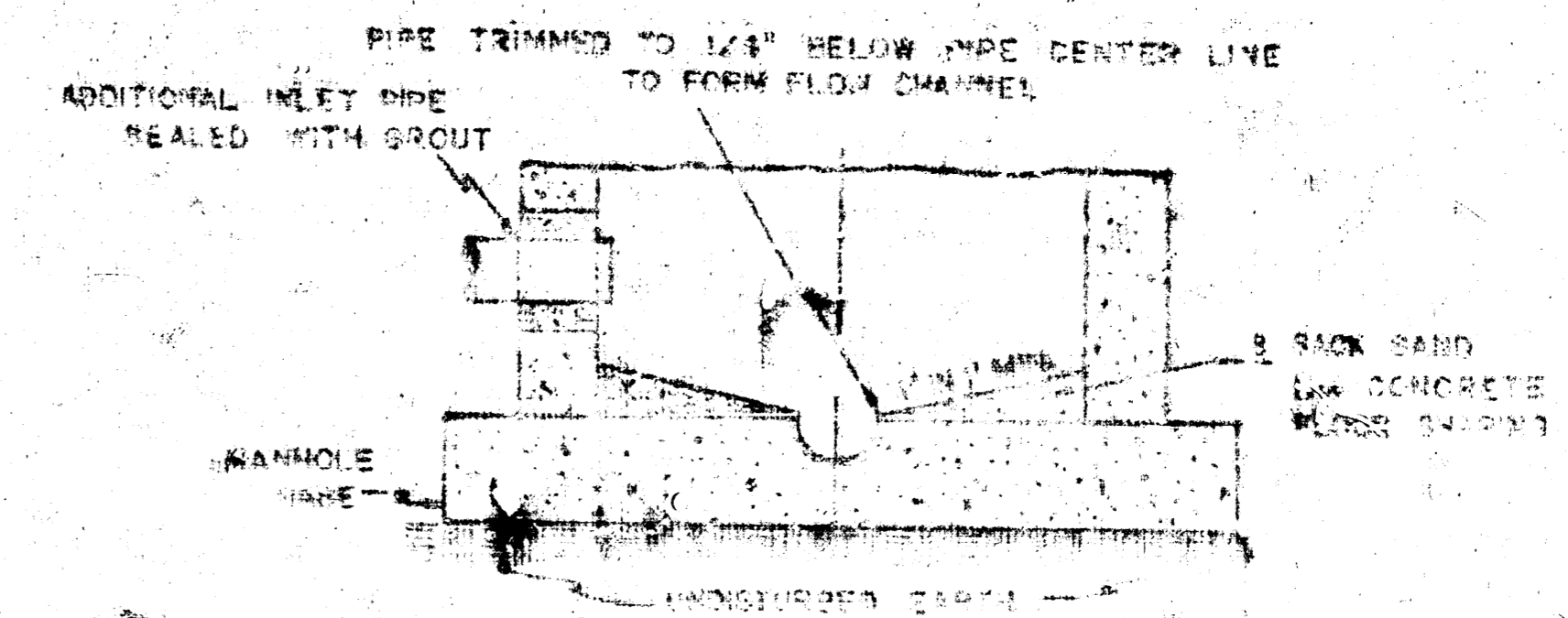


MANHOLE RING

WEIGHT 205 LBS. 480 NO. 8004
WEIGHT 200 LBS. 480 NO. 8004S



MANHOLE RING



SECTIONAL ELEVATION-INVERT

NOTE: OPENING FOR RIGID PIPE OUT OF MANHOLE SHALL BE PROTECTED IN PLACE WITH NON-CURRING GROUT. EXTERIOR OF COMPLETED CONNECTION TO BE SEALED WITH APPROVED COUPLING.

DETAILS OF
SEWER APPURTENANCES
ADOPTED AS STANDARD DESIGN
BY
ENGINEERING DIVISION
CITY OF WICHITA, KANSAS
R. W. LINN CITY ENGINEER
1974