

LISA COLE 1ST. ADDITION

GENERAL NOTES

1. Pipe for this project will be either A.B.S. Composite or Polyvinyl Chloride. All Sewer pipe of one size shall be of one type.
2. All 4" Stub-outs shall be 5 L.F. long measured from the outside of manholes. Flowline into manholes shall be .1' higher than the flowline out of the manholes. At the end of stub-outs the flowline shall be .2' higher than the flowline out of the manhole.

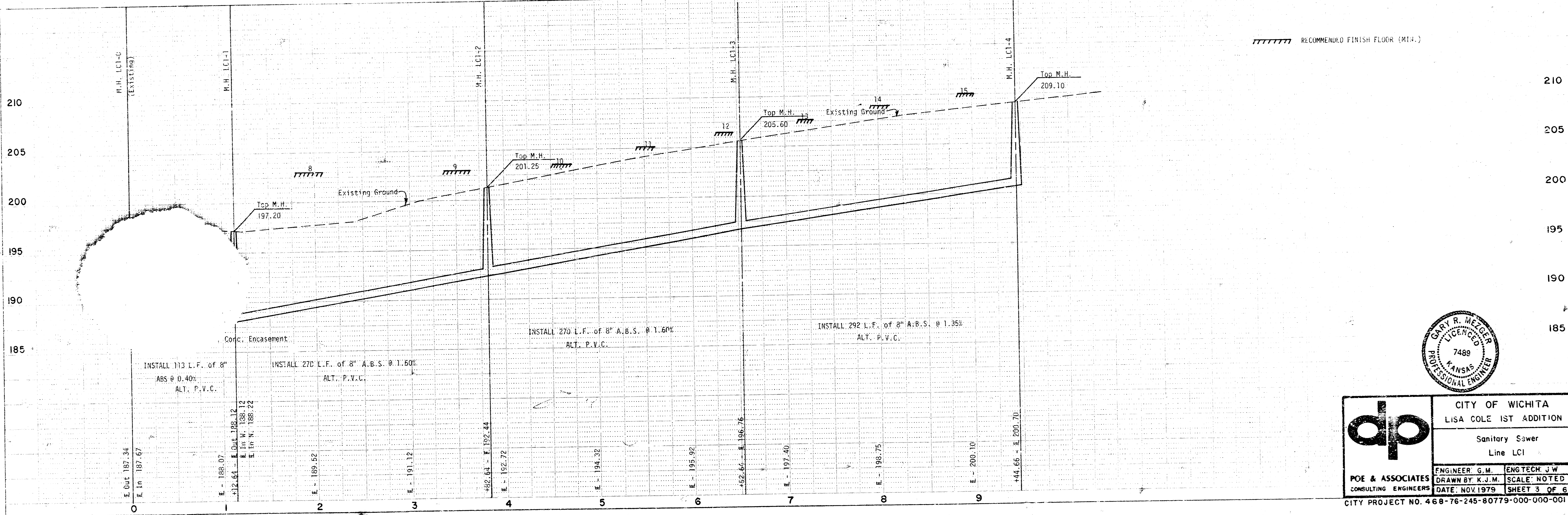
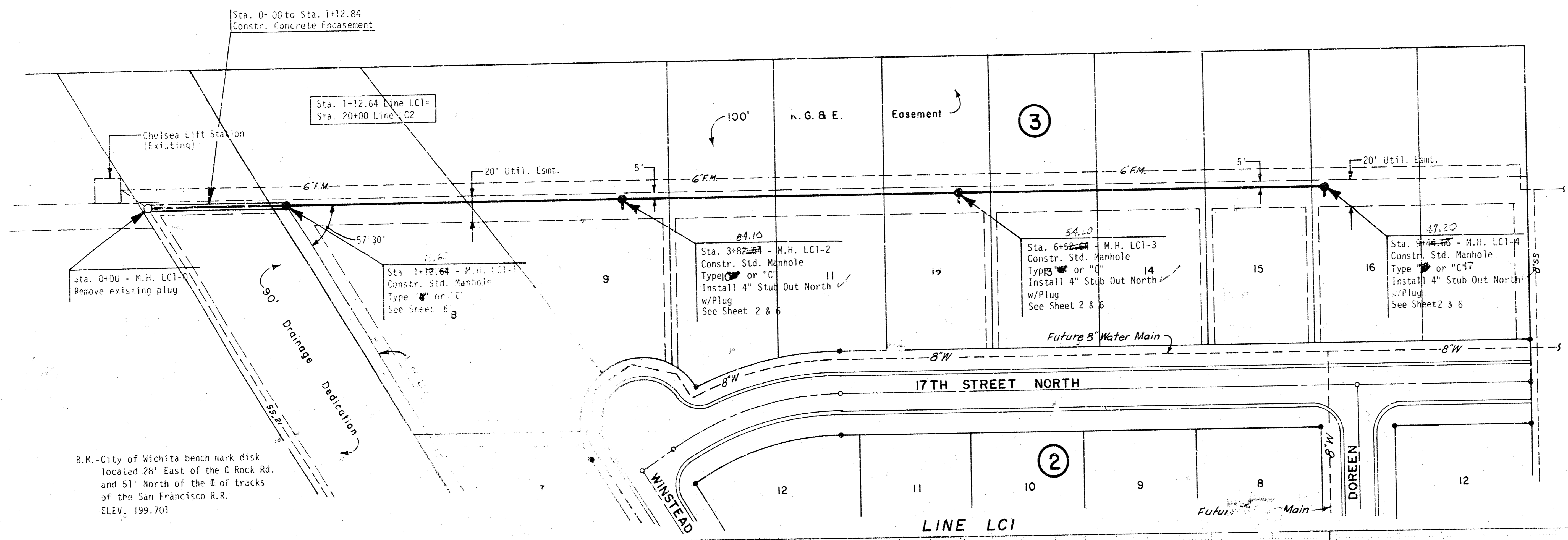


dp	CITY OF WICHITA	
	LISA COLE 1ST ADDITION	
LAYOUT MAP		
ENGINEER: G.M.	ENG. TECH: J.W.	
DRAWN BY: W.F.	SCALE: Noted	
DATE: Nov. 1979	SHEET: 2 OF 6	

STATE	FISCAL YEAR	SHEET NO.	TOTAL SHEETS

DATE	BY
DATE	BY
DATE	BY

DATE	BY
DATE	BY
DATE	BY



dp POE & ASSOCIATES CONSULTING ENGINEERS

CITY OF WICHITA
LISA COLE 1ST ADDITION
Sanitary Sewer
Line LCI

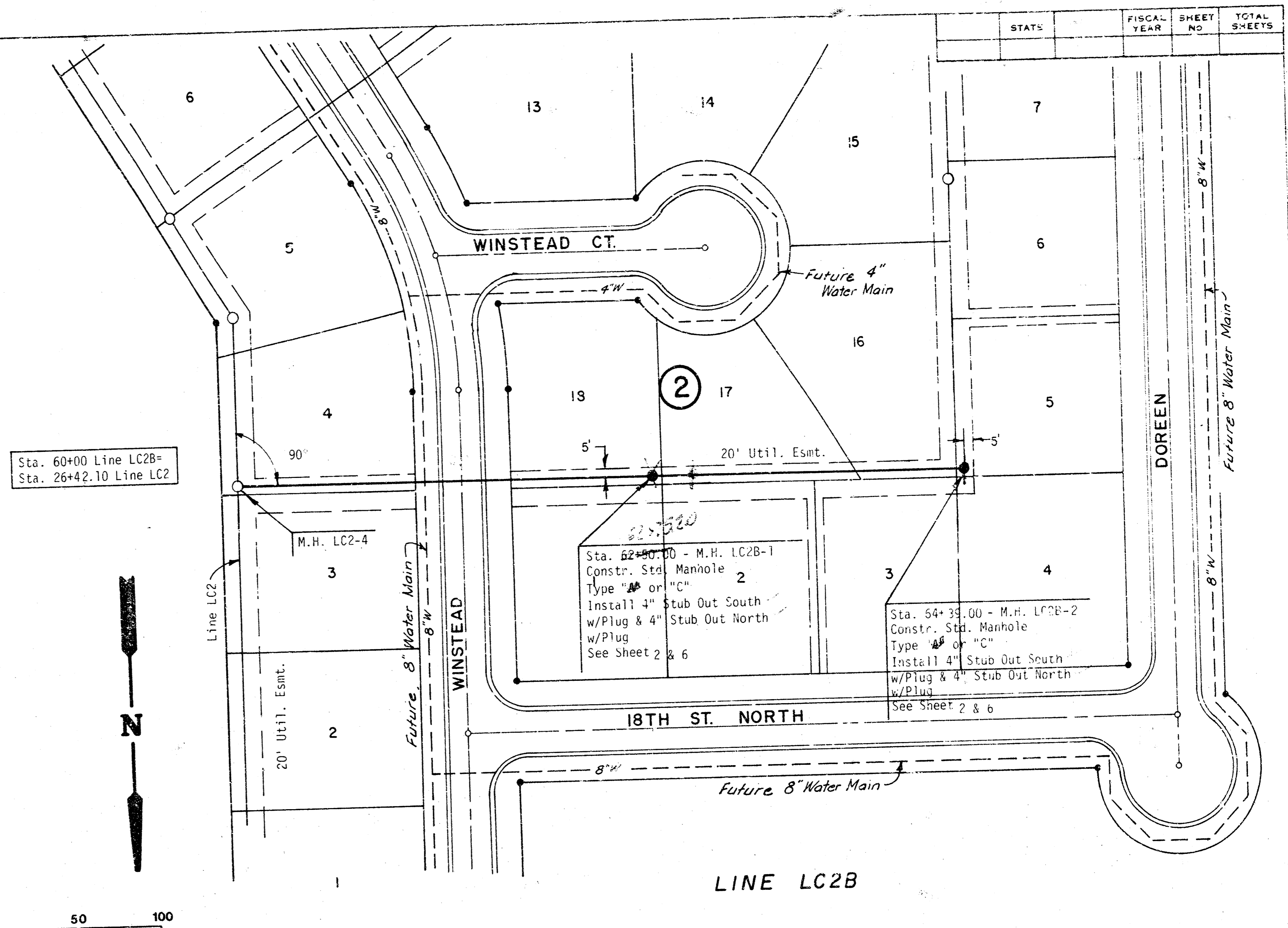
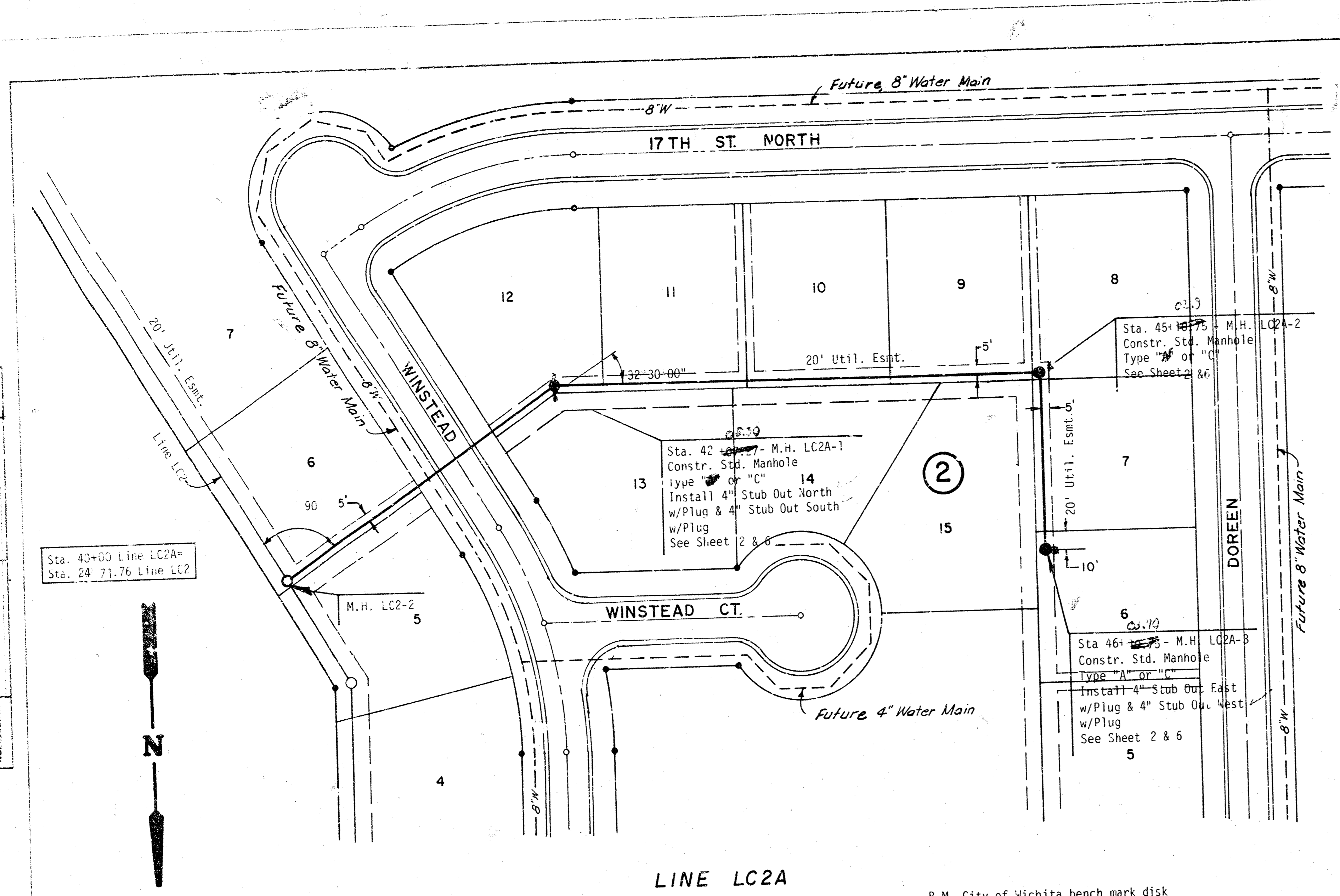
ENGINEER G.M. ENG. TECH. J.W.
DRAWN BY K.J.M. SCALE: NOTED
DATE: NOV. 1979 SHEET 3 OF 6

CITY PROJECT NO. 468-76-245-80779-000-000-001

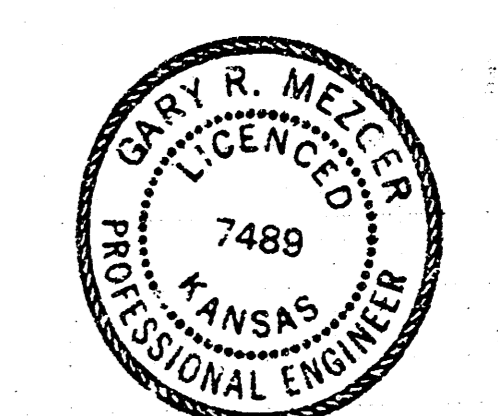
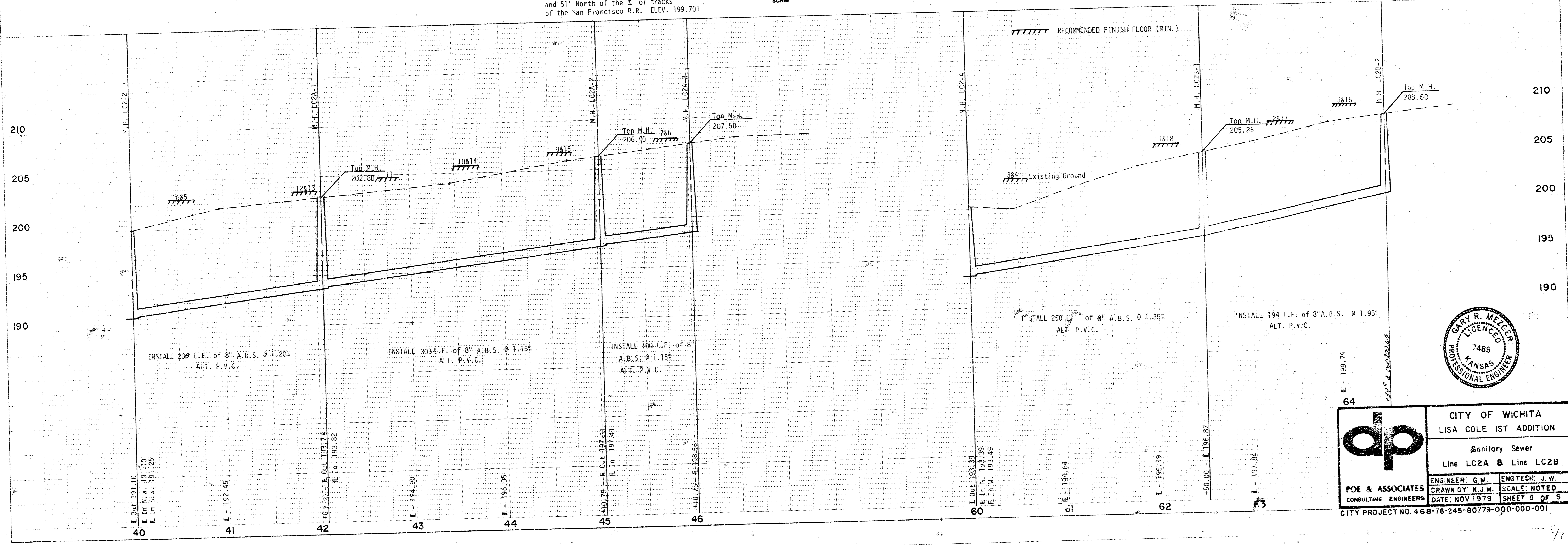
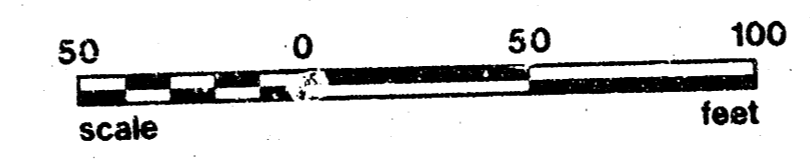
FILMED FROM THE BEST

PLAN	SURVEYED	DATE
NOTE BOOK	PLANNED	
NO.	CHECKED	
	BY	
	DATE	

PROFILE	SURVEYED	DATE
NOTE BOOK	PLANNED	
NO.	CHECKED	
	BY	
	DATE	



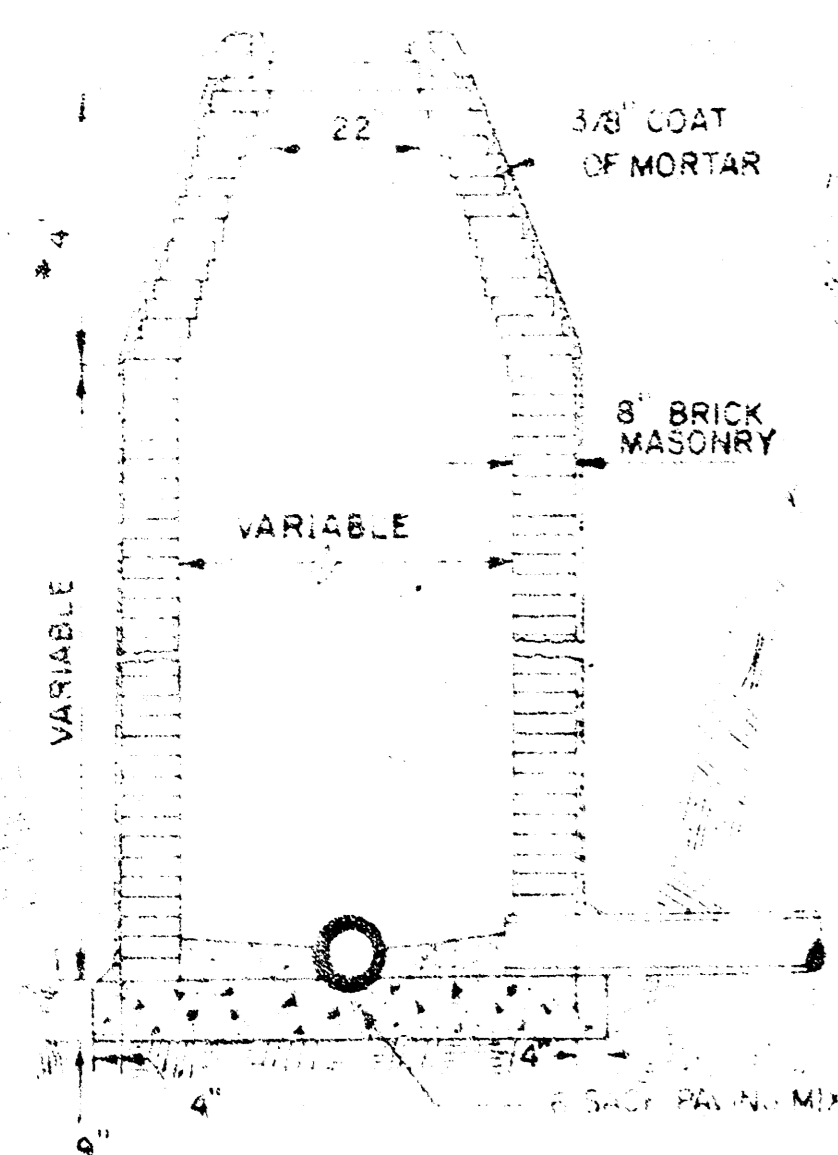
B.M. - City of Wichita bench mark disk located 28' East of the Rock Rd. and 51' North of the C of tracks of the San Francisco R.R. ELEV. 199.701



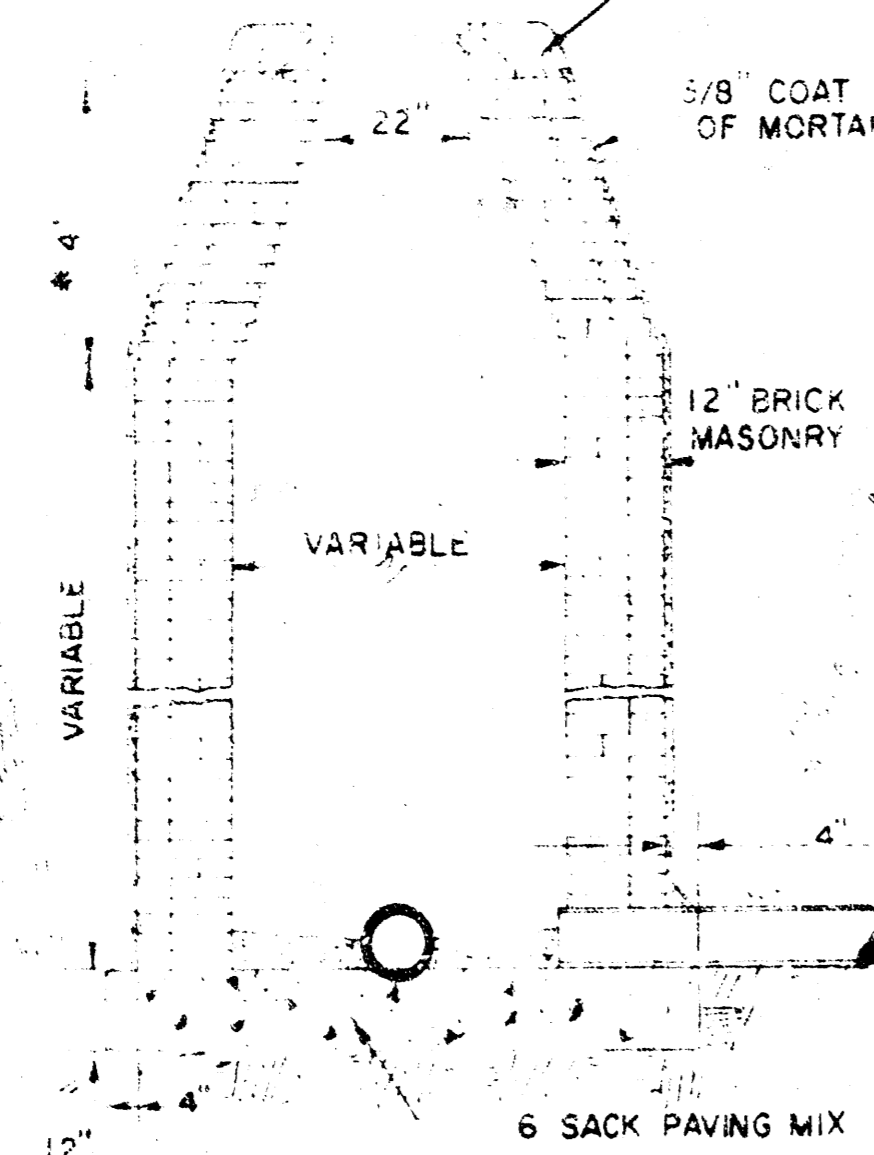
ap	CITY OF WICHITA	
	LISA COLE 1ST ADDITION	
Sanitary Sewer		
Line LC2A & Line LC2B		
ENGINEER: G.M.	ENGINEER: J.W.	
DRAWN BY: K.J.M.	SCALE: NOTED	
DATE: NOV 1979	SHEET: 5 OF 6	

CITY PROJECT NO. 468-76-245-80-79-000-000-001

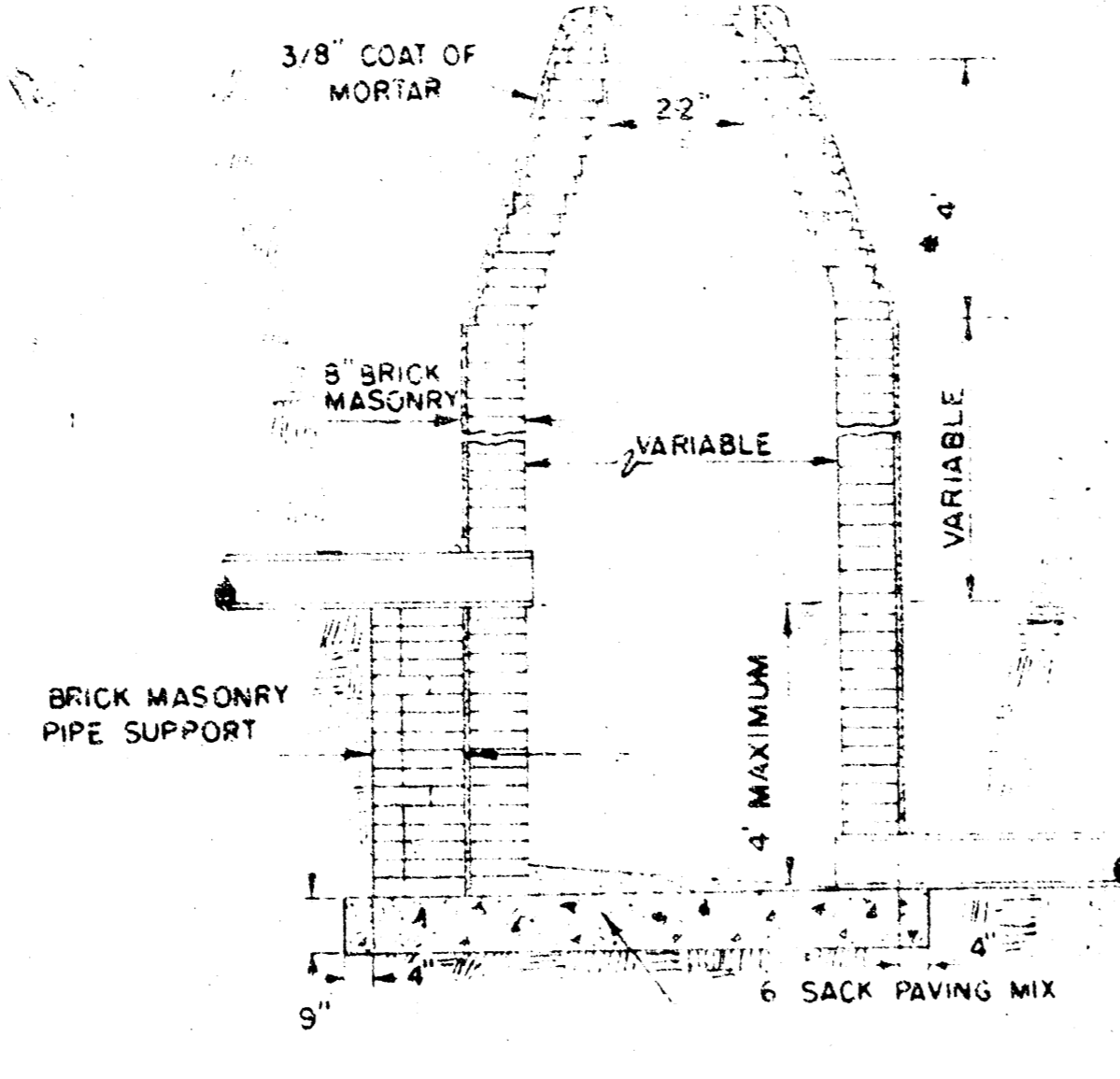
GROUT TO BE PLACED AROUND MANHOLE RING ONLY WHEN MANHOLE IS CONSTRUCTED IN UNPAVED AREAS. (TYPICAL ALL MANHOLES)



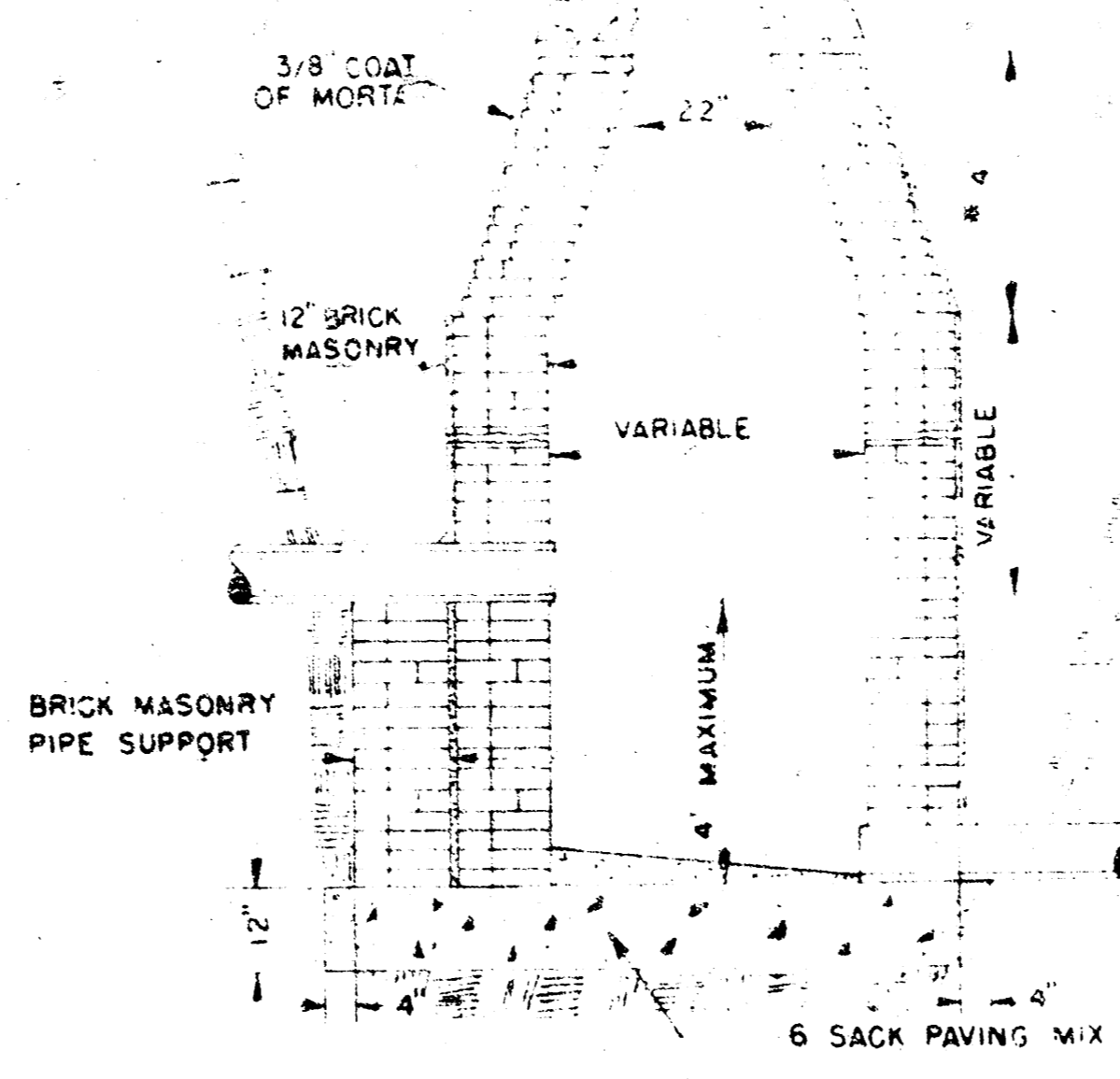
STANDARD MANHOLE TYPE "A"



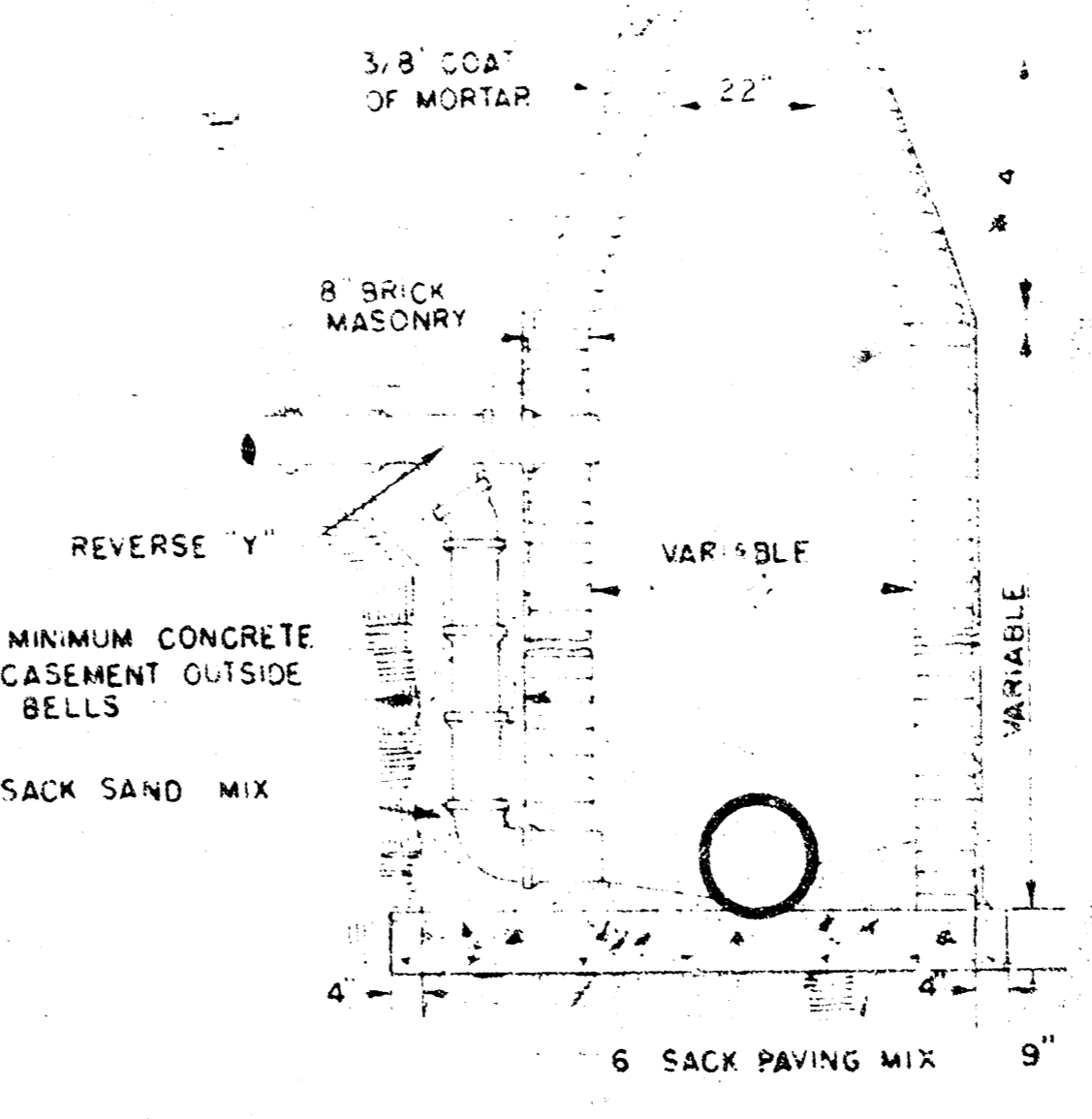
STANDARD MANHOLE TYPE "B"



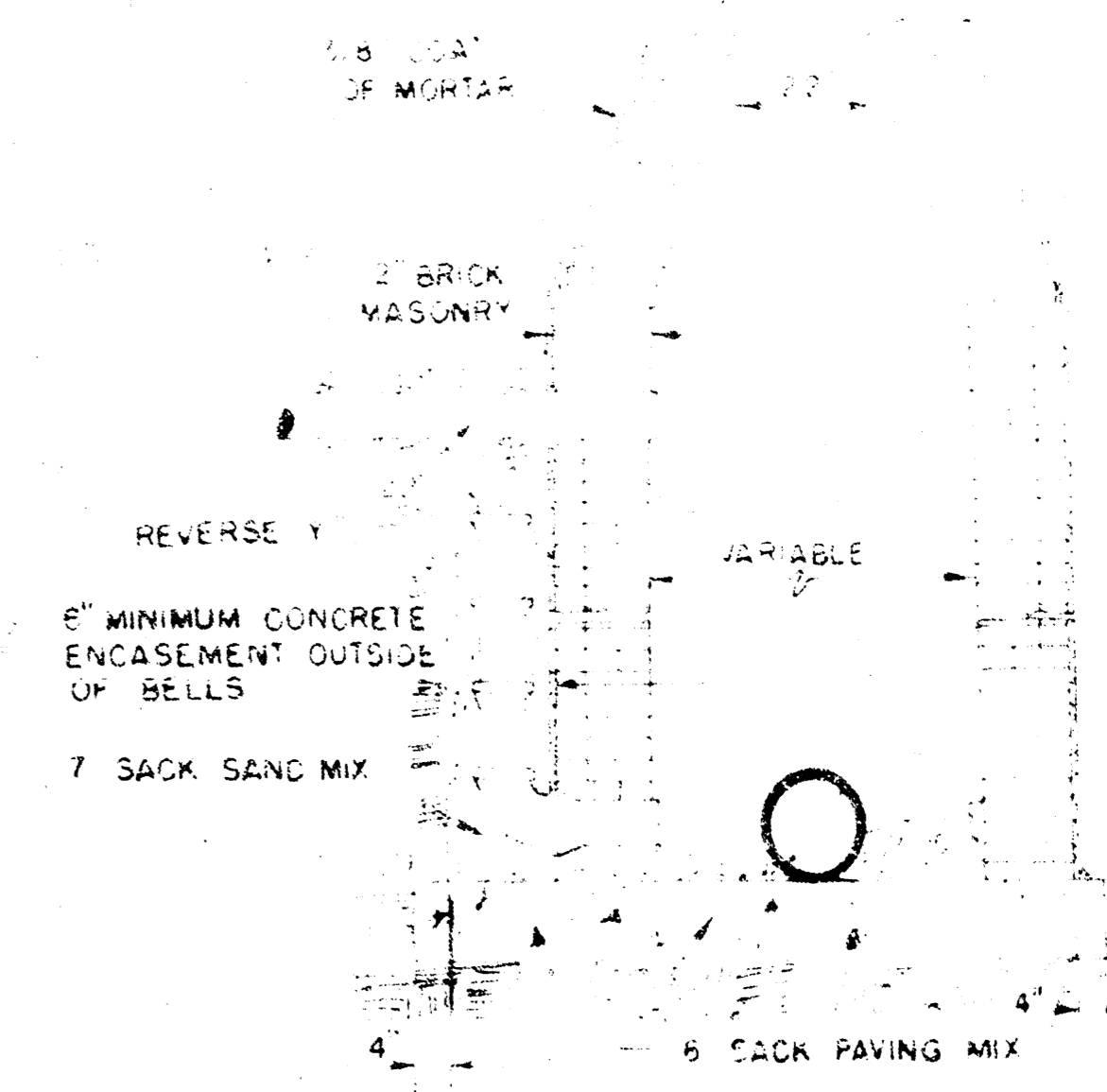
DROP MANHOLE TYPE "A"



DROP MANHOLE TYPE "B"



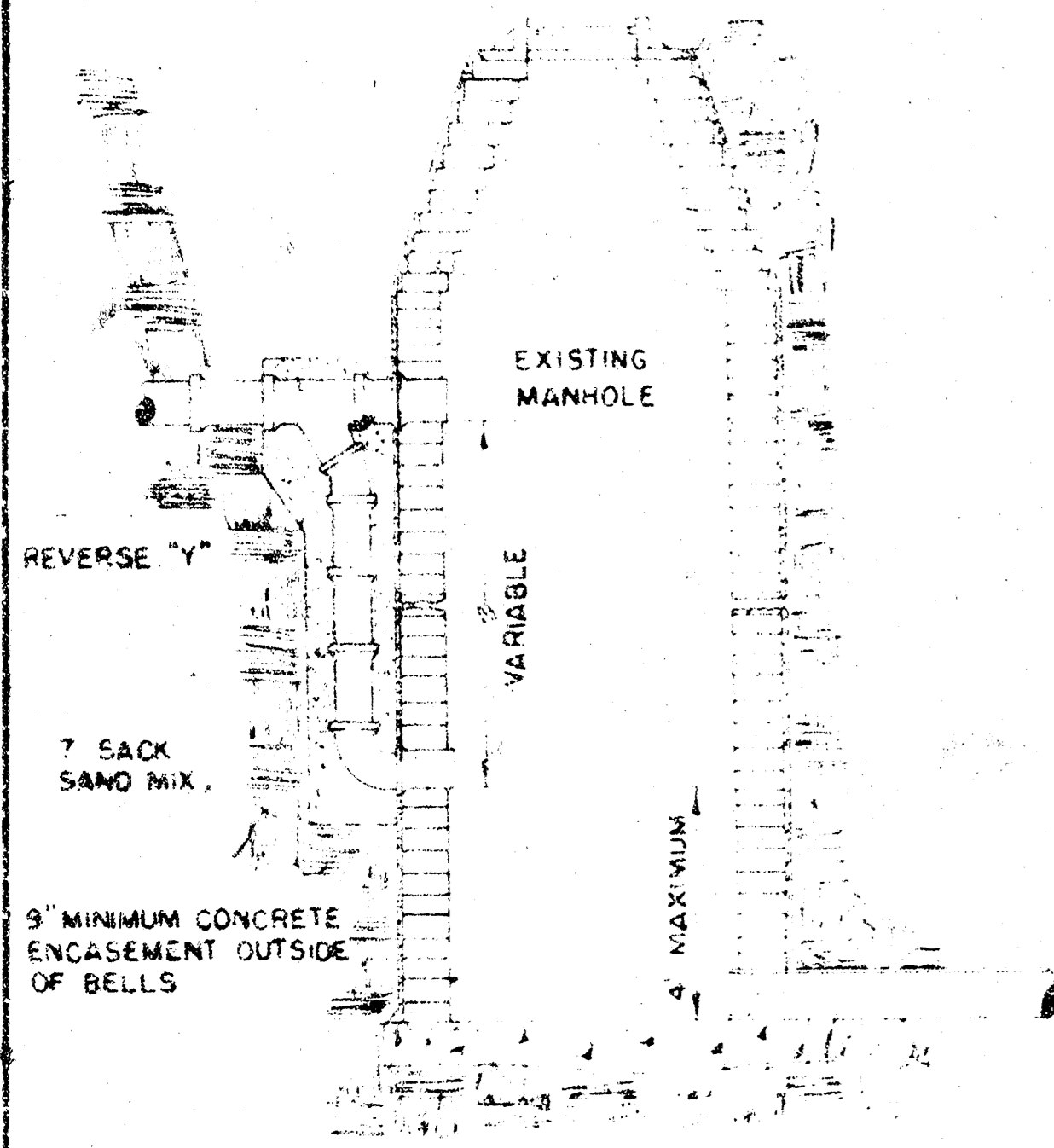
OUTSIDE DROP MANHOLE TYPE "A"



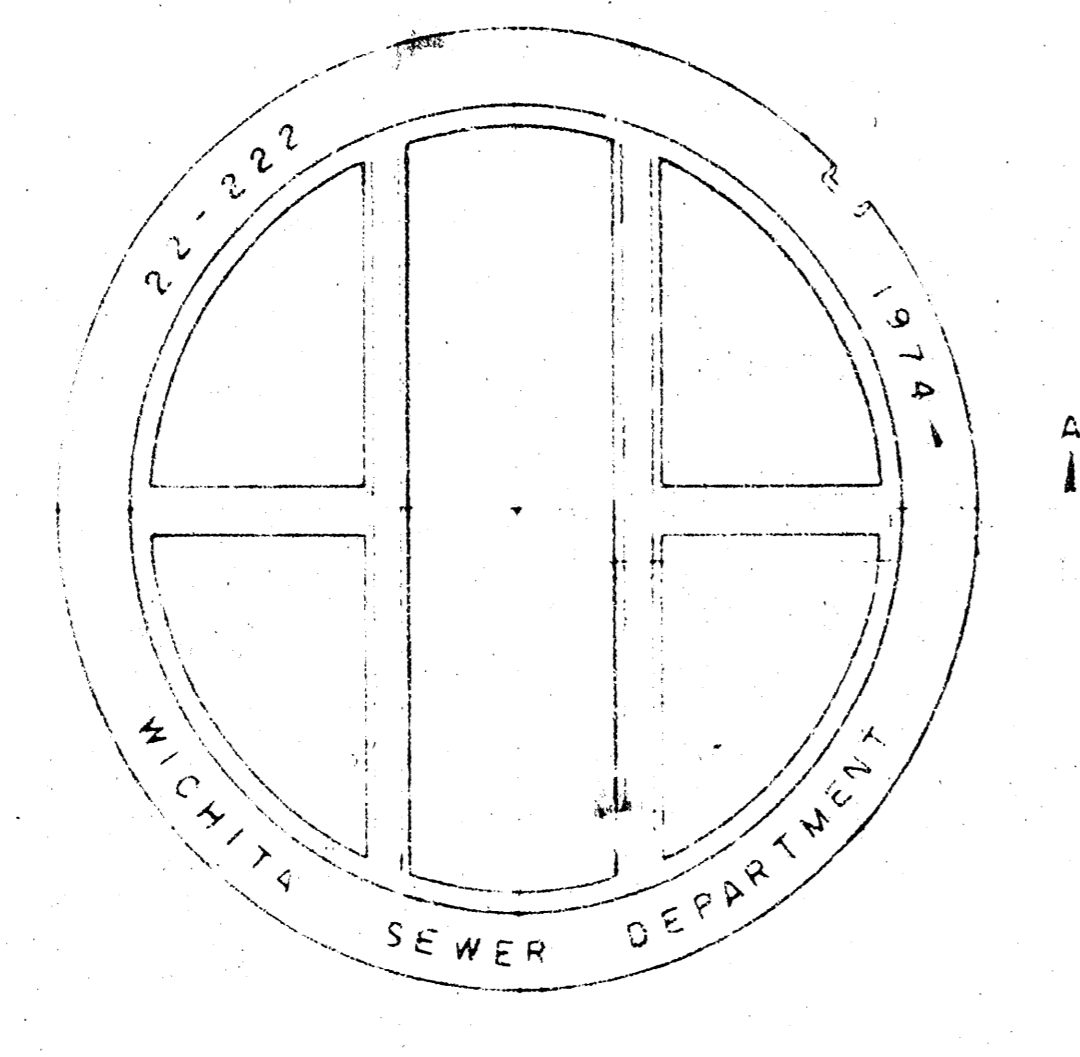
OUTSIDE DROP MANHOLE TYPE "B"

* DRAW = 6' ON 5' DIA. M.H.

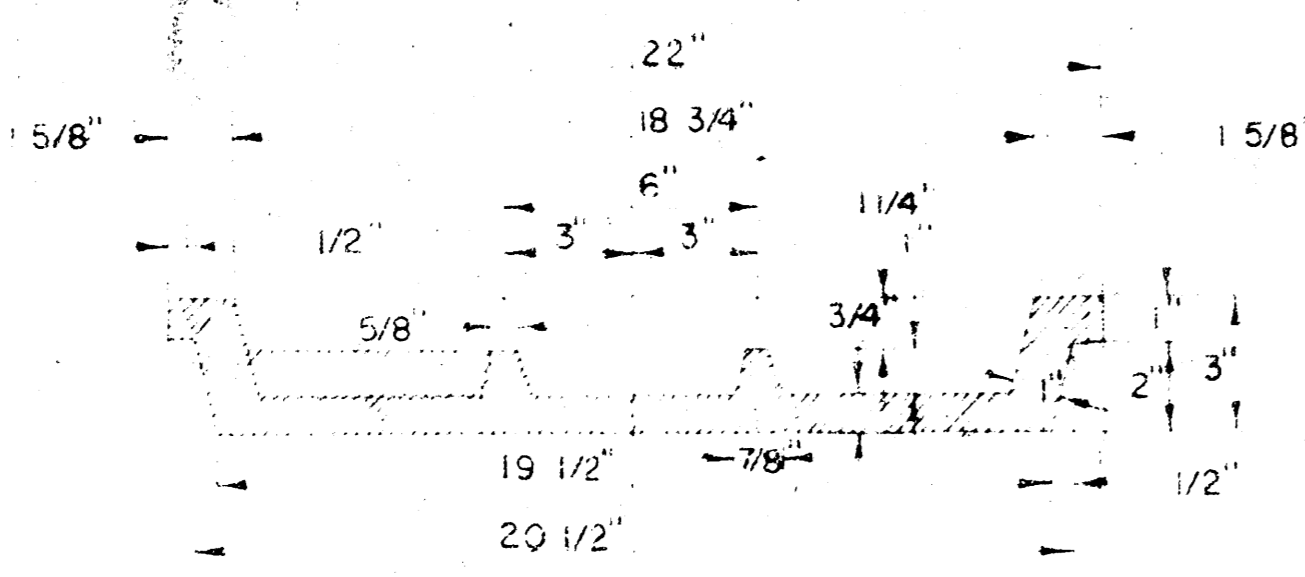
NOTE: REINFORCING STEEL SHALL BE INSTALLED IN THE MANHOLE BASES 6" ABOVE THE BOTTOM. REINFORCING STEEL SHALL CONSIST OF NO. 4 BARS PLACED ON 6" CENTERS IN BOTH DIRECTIONS. THE COST OF REINFORCING STEEL IS TO BE INCLUDED IN THE PRICE BID FOR THE MANHOLE.



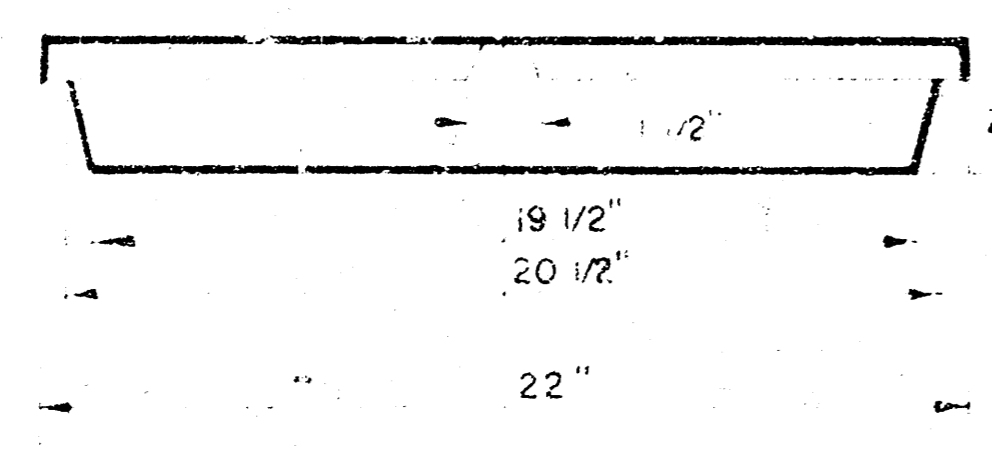
DETAIL OF DROP STACK FOR EXISTING MANHOLES IN GROUND WATER



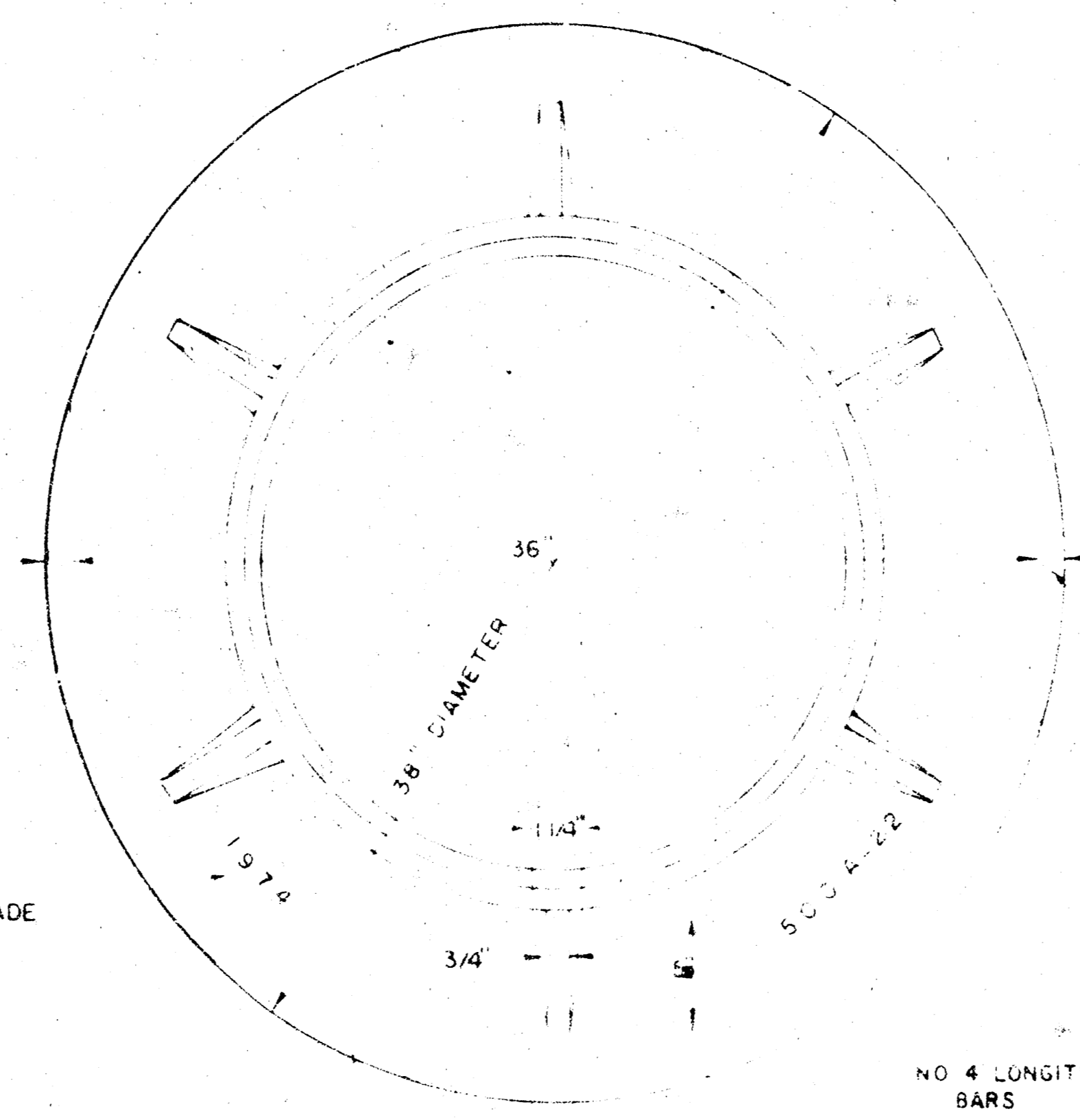
MANHOLE COVER



MANHOLE COVER

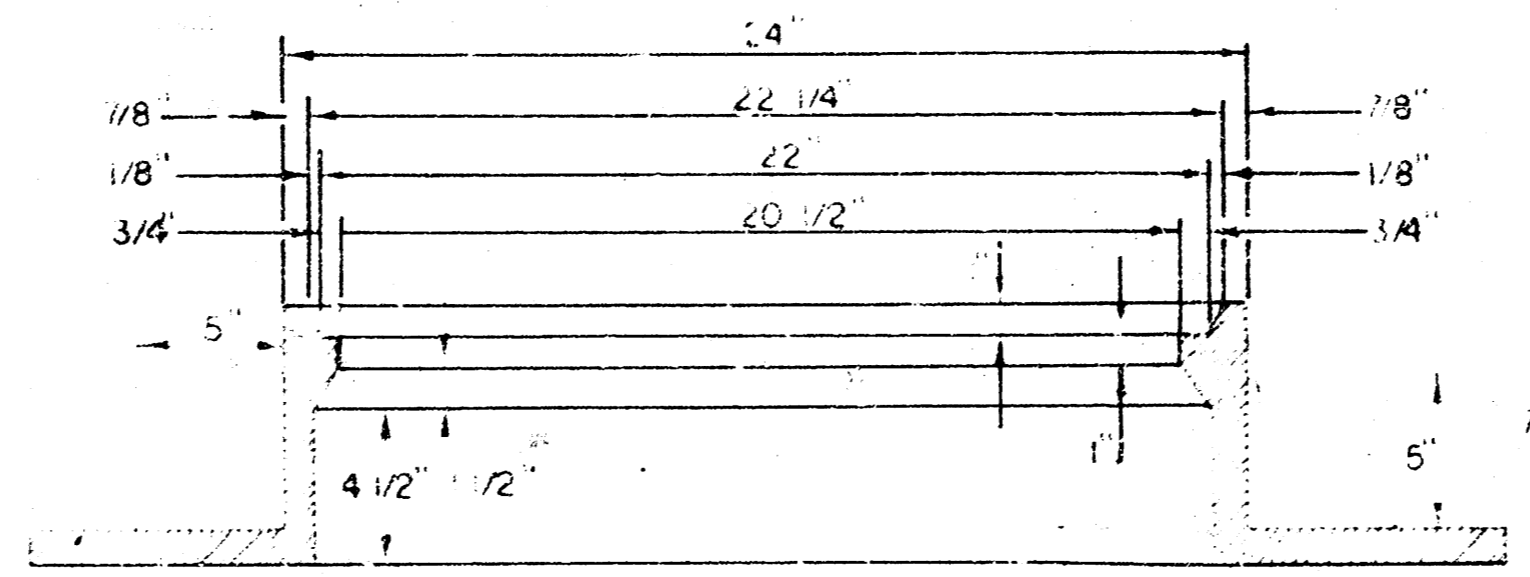


MANHOLE COVER



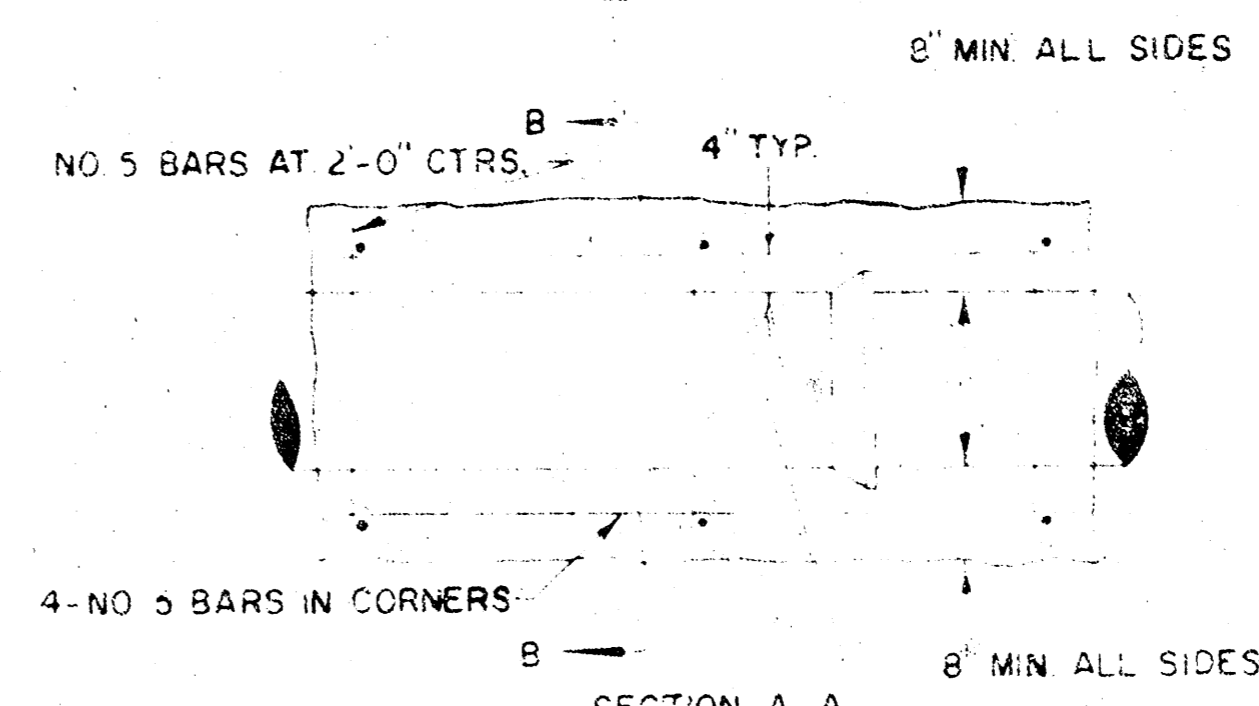
MANHOLE RING

WEIGHT 325 LBS RING NO 500A
WEIGHT 800 LBS RING NO 500AS

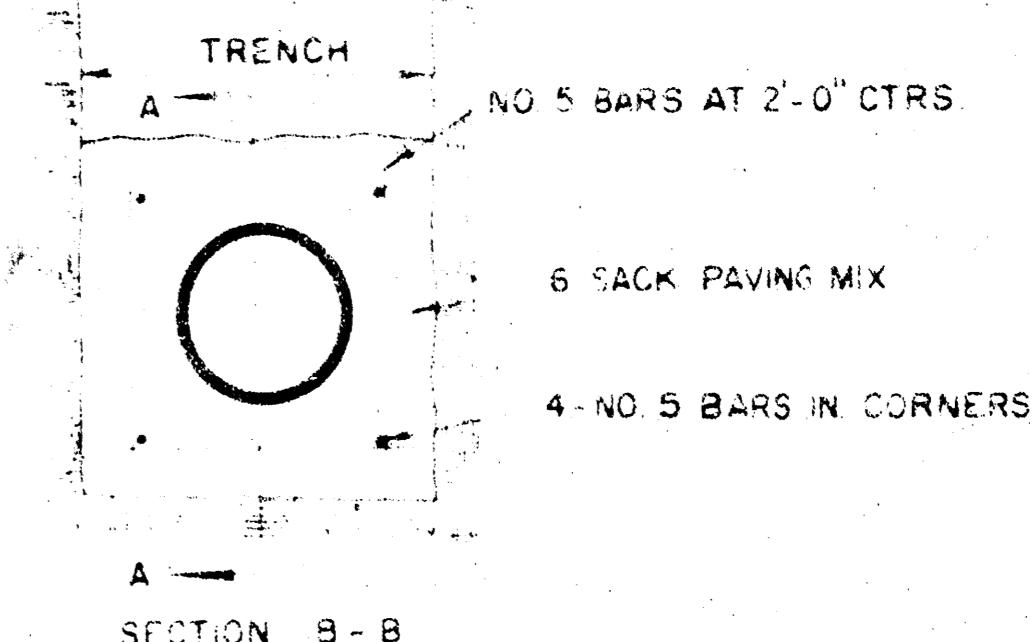


MANHOLE RING

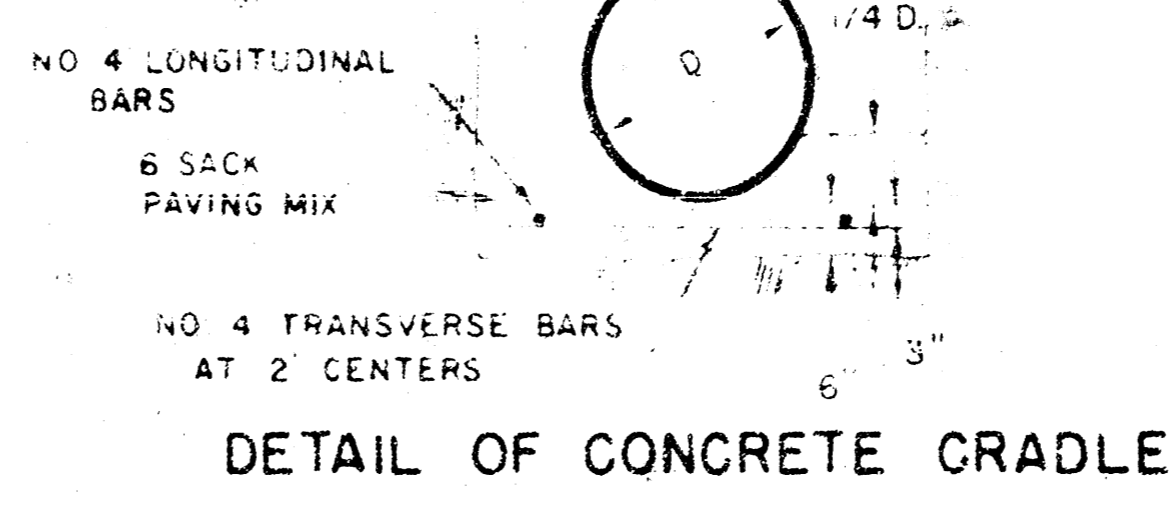
OUTSIDE CIRCUMFERENCE OF COVER AND THE INNER FACE AND SEAT OF RING TO BE MACHINE FIT.



REINFORCED CONCRETE ENCASEMENT



REINFORCED CONCRETE ENCASEMENT



DETAIL OF CONCRETE CRADLE

ORDINARY BEDDING METHOD
STORM SEWER PIPE

GENERAL NOTES

- MORTAR USED IN MASONRY CONSTRUCTION SHALL CONTAIN 8 SACKS OF CEMENT PER CUBIC YARD
- STANDARD MANHOLES TYPE A OR TYPE B AND STANDARD DROP MANHOLES TYPE A OR TYPE B SHALL BE BID AS STANDARD MANHOLES FOR THE TYPE AND DIAMETER INDICATED
- OUTSIDE DROP MANHOLES SHALL BE BID AS STANDARD OUTSIDE DROP MANHOLES FOR THE TYPE AND DIAMETER INDICATED
- ALL MANHOLE DIAMETERS WILL BE 4' UNLESS INDICATED OTHERWISE
- MANHOLES WITH PIPE SIZES LARGER THAN 24" SHALL BE 5' DIAMETER
- THE FLOORS OF ALL MANHOLES SHALL BE SHAPED TO INCREASE HYDRAULIC EFFICIENCY USING 8 SACK SAND MIX CONCRETE
- PIPES INSTALLED WITHIN THE MANHOLE EXCAVATION SHALL BE CRADLED WITH CONCRETE TO THE LIMITS OF THE MANHOLE EXCAVATION. COST OF CRADLE WITHIN MANHOLE EXCAVATION SHALL BE INCLUDED IN THE PRICE BID FOR THE MANHOLE.

REVISED 4-13-77
DETAILS OF
SEWER APPURTENANCES
ADOPTED AS STANDARD DESIGN
BY
ENGINEERING DIVISION
CITY OF WICHITA, KANSAS
R. W. LINN CITY ENGINEER
1974

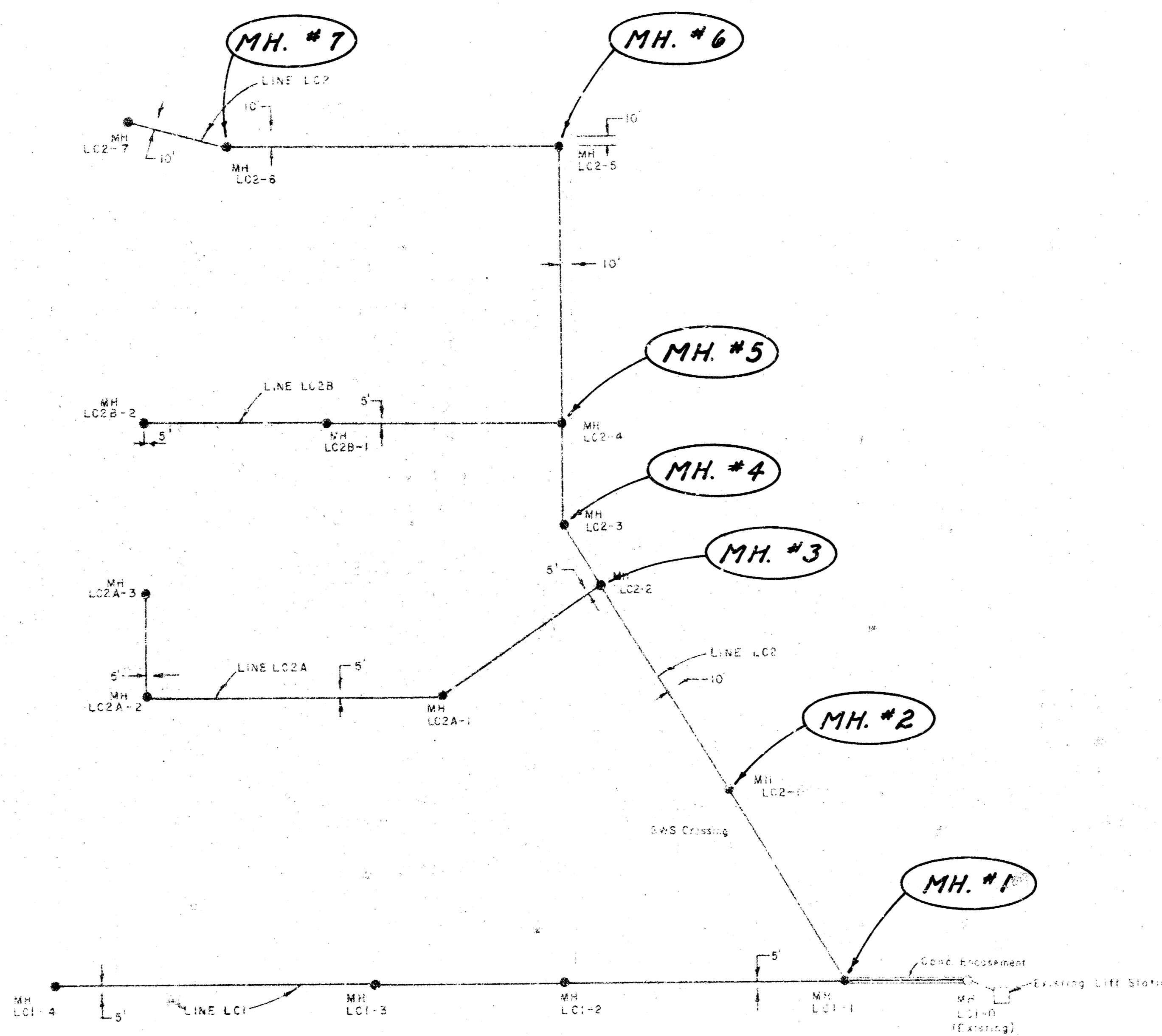
City of Wichita Sanitary Sewer Project No. 468-76-245-80779-000-001

LAT 13, MAIN 20, WAR INDUSTRIES SEWER, PHASE II

PRGJ. NO. 468-76-245-80779-000-000-001

CITY OF WICHITA, KANSAS

R.W. BRUGGEMAN - DIRECTOR OF ENGINEERING / CITY ENGINEER

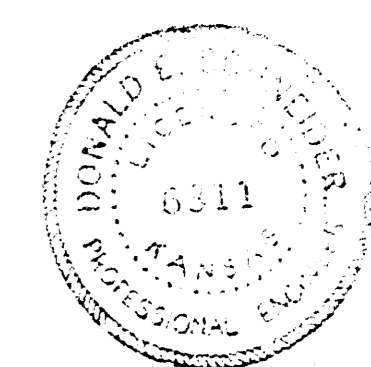


PHASE II WORK ON THIS PROJECT CONSISTS OF ADJUSTING THE DEEPS OF MANHOLES BUILT AS PHASE I OF THIS PROJECT TO MATCH FINISHED GRADE AS INDICATED IN THE FOLLOWING TABLE.

MANHOLE NUMBER AS SHOWN ON LOCATION MAP	PHASE I STATIONING AND LINE NUMBER	REQUIRED ADJUSTMENT IN FEET
1	1+13.6 LINE LC1	RAISE 2.00 FT.
2	22+50.4 LINE LC2	RAISE 1.50 FT.
3	24+70.4 LINE LC2	RAISE 1.50 FT.
4	25+46.0 LINE LC2	RAISE 1.00 FT.
5	26+40.1 LINE LC2	RAISE 2.00 FT.
6	29+12.2 LINE LC2	RAISE 4.00 FT.
7	32+68.3 LINE LC2	RAISE 1.00 FT.

ALL OF THIS WORK SHALL BE COMPLETED IN CONFORMANCE WITH THE REQUIREMENTS SPECIFIED IN THE SECTION TITLED "MANHOLES ADJUSTED" OF THE STANDARD SEWER SPECIFICATIONS.

LISA COLE 1ST. ADDITION



	CITY OF WICHITA
	LISA COLE 1ST ADDITION
PUE & ASSOCIATES CONSULTING ENGINEERS	LAYOUT MAP
	DATE: 10/1/79 DRAWN BY: W.F. [unclear] CHECKED BY: [unclear]