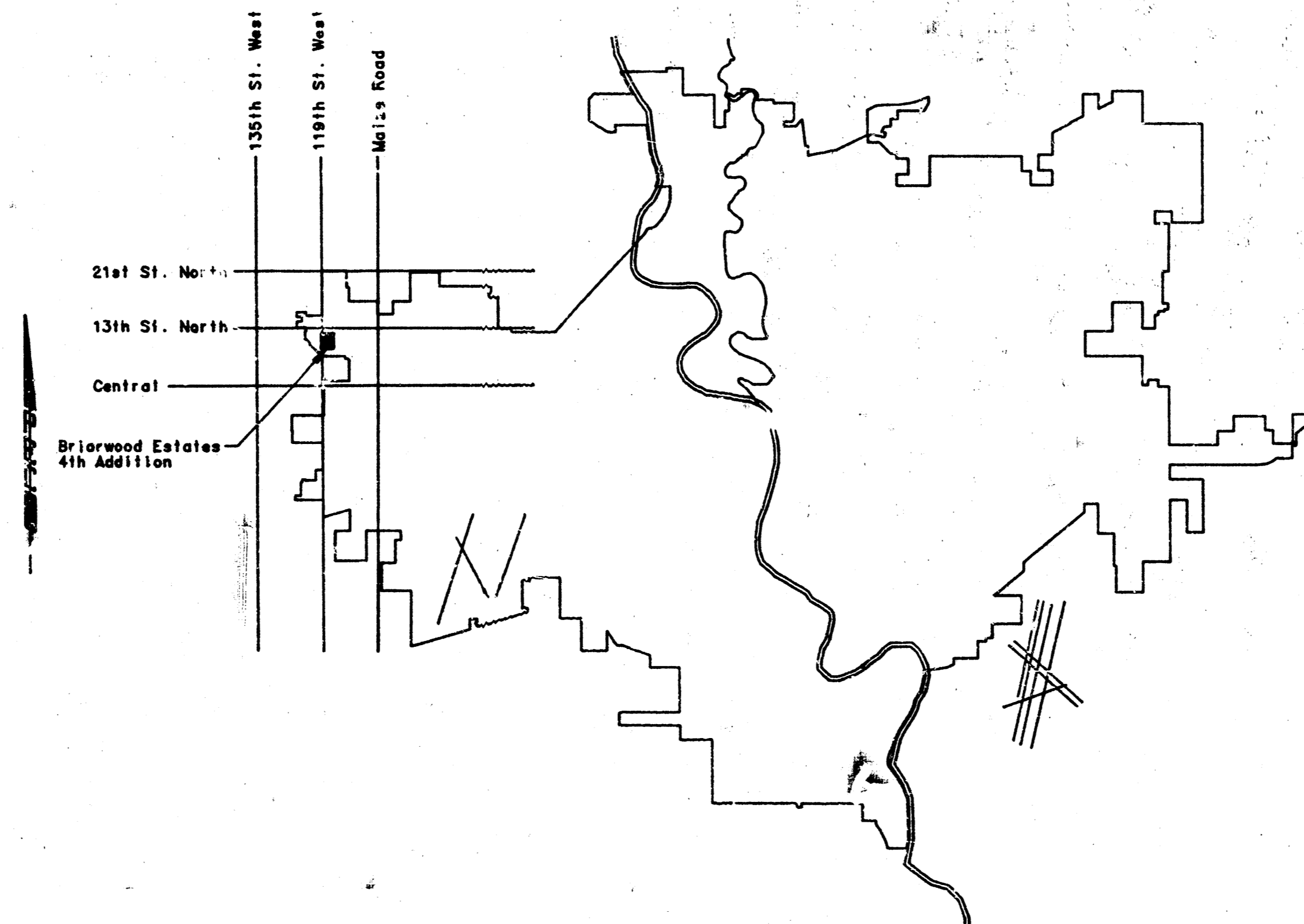


CONSTRUCTION PLANS FOR
 LATERAL 15, MAIN 12
 OF THE
SOUTHWEST INTERCEPTOR SEWER

THE CITY OF WICHITA,
 SEDGWICK COUNTY, KANSAS
 MIKE LINDEBAK, P.E., CITY ENGINEER

INDEX OF SHEETS

SHEET NO. 1	TITLE SHEET
SHEET NO. 2	KEY MAP
SHEET NO. 3	PLAT & DRAINAGE PLAN
SHEET NO. 4-7	PLAN/PROFILE



*As Built
 J.L.L.
 1-85*

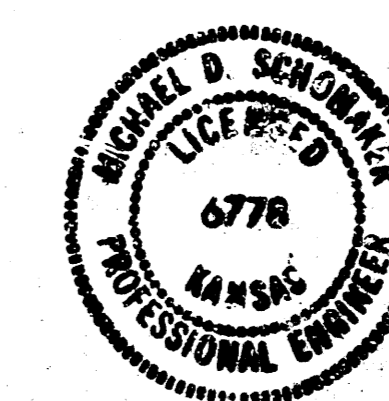
LOCATED MAP

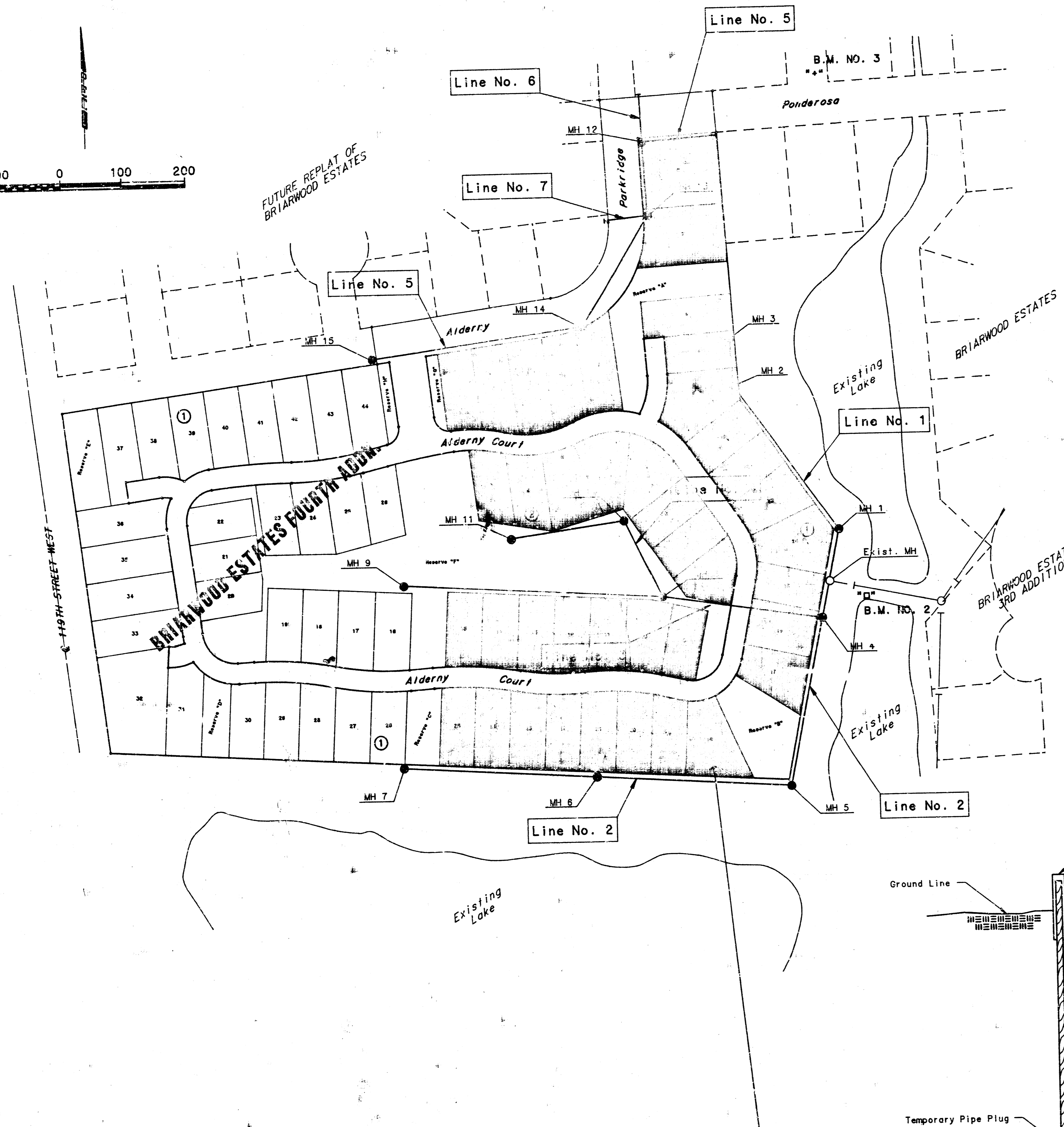
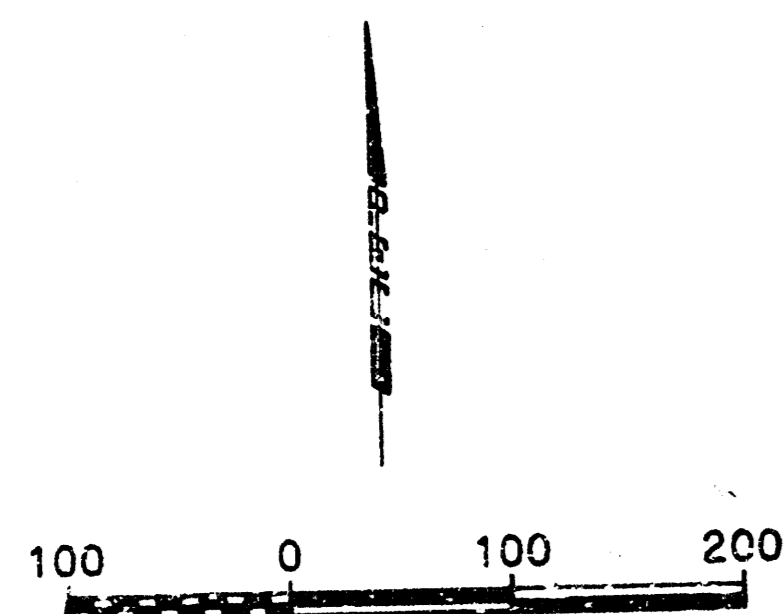
CITY OF WICHITA PROJECT NO. 468-76-245-81354-000-000-001

MAY, 1984

PLANS PREPARED BY

PROFESSIONAL ENGINEERING CONSULTANTS, P.A.
 ENGINEERS
 WICHITA, KANSAS





LINE SCHEDULE	
Line No.	Sheet No.
1	4
2	5
3	6
4	6
5	7
6	7
7	7

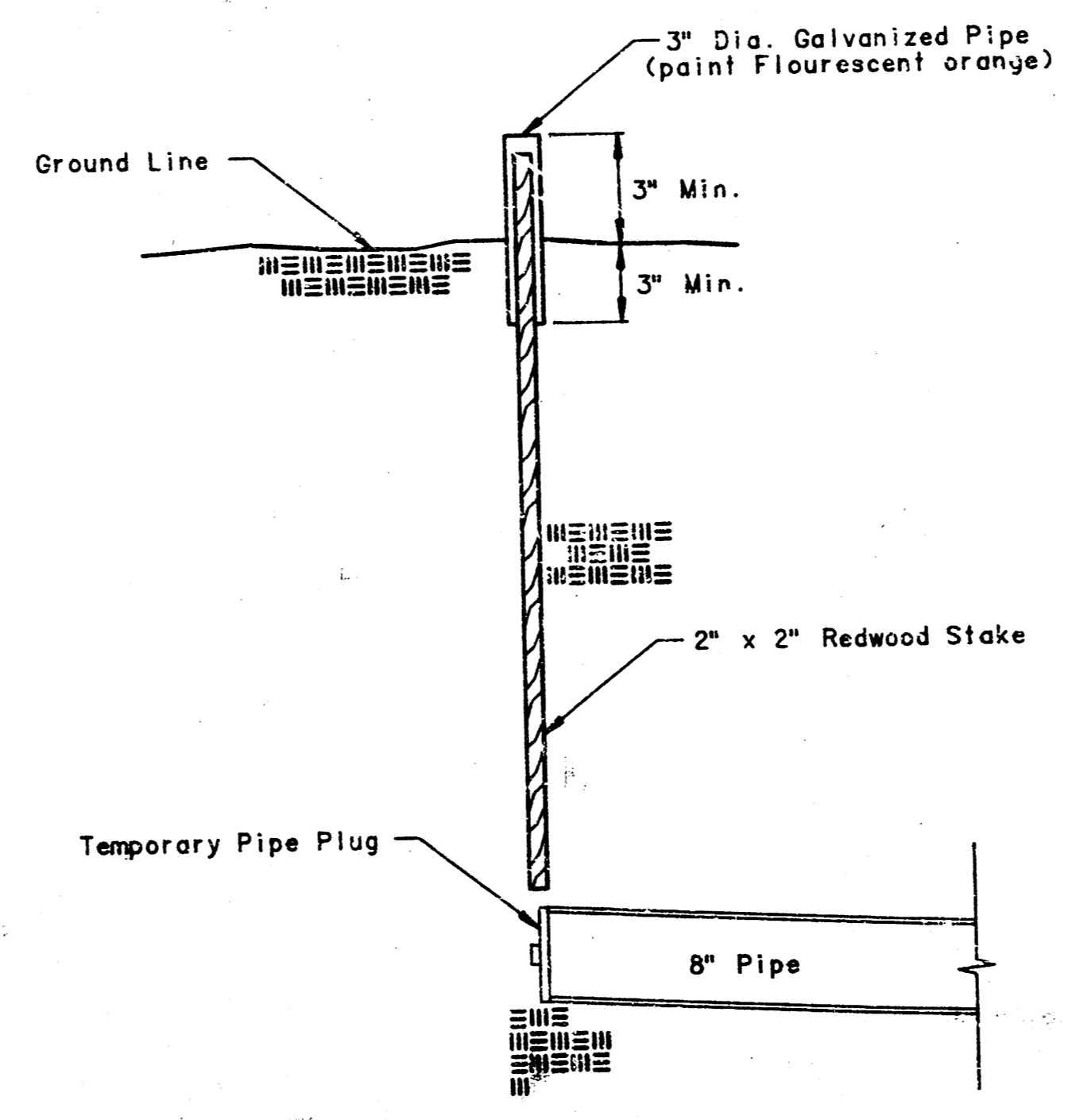
- General Notes
- All construction and materials to comply with City of Wichita Specifications and Standards.
 - All elevations shown are City of Wichita Datum (USGS-1187.4 - City Datum).
 - The contractor shall limit the extent of trench to remain open overnights and weekends to less than 50 feet.
 - At least 24 hours prior to beginning excavation (excluding weekends and holidays), the contractor shall contact the utility location service "Non-Dig-It" at (316) 287-3888 to request the following utility companies to locate any existing lines within the project area: Gas Service Company, K.G. & E., Southwestern Bell Telephone Company, the Wichita Water Department, and Air Capital Cablevision.
 - The buried utilities as located on the plans are approximate locations only. It should be noted that other buried lines and cables may exist which are not shown on these plans. The contractor shall exercise extreme caution during trenching operations to avoid damaging these lines. Any lines damaged shall be replaced or repaired immediately as directed by the engineer at the contractor's expense.
 - The contractor shall restore all ditches, swales, road shoulders, entrances, and bank lines to their original slopes and grades.
 - The contractor shall be responsible for preserving property irons. The contractor shall be required to re-establish any property irons which are damaged or destroyed by his construction operations. Such irons shall be re-established by a licensed land surveyor or a licensed professional engineer in accordance with state laws. All costs for this work shall be subsidiary to the other items of work.
 - The contractor shall dispose of all excess excavated soil on site as directed by the engineer.
 - Manhole top elevations shall be set to match proposed finished grade as prescribed in the City of Wichita Specifications.
 - The contractor shall avoid removal or trimming of any trees where possible. Where the contractor believes the removal or trimming is unavoidable, he shall coordinate such work with the engineer.
 - Tree removal and tree trimming shall be done by the contractor under the supervision of the engineer and shall be considered as subsidiary to other items of work.
 - Trees removed, tree trimmings, and other debris shall be hauled from the site by the contractor and wasted as directed by the engineer at no additional cost to the owner.
 - Risers and additional stubs shall be installed on this project to conform with individual lots when ordered by the field engineer. Construction shall conform to City of Wichita Specifications and Standards. Locations of the ends of the risers shall be marked by fastening green colored plastic tape to the end of the riser and caught to the ground surface as the excavation is backfilled such that the colored tape will be visible when the project is completed. All risers shall be constructed using 6" dia. 40 lb. or 48 lb. pipe.
 - Prior to beginning construction, the contractor shall excavate at Sta. 0+00 of proposed Line No. 5 to verify the location and pipe type of the existing sewer line. The contractor shall notify the engineer immediately if it appears that adjustments to the proposed location or elevation are necessary.
 - Contractor shall grade the sanitary sewer alignment to the profile and elevations shown on the plans. The contractor shall visit the site to determine the extent of grading prior to preparation of his bid. All costs for grading shall be subsidiary to the project.
 - Contractor shall provide positive drainage away from all manhole covers.
 - Stakes will be set by owner prior to opening of bids so that the Contractor may estimate the extent of grading required.

BENCH MARK LIST

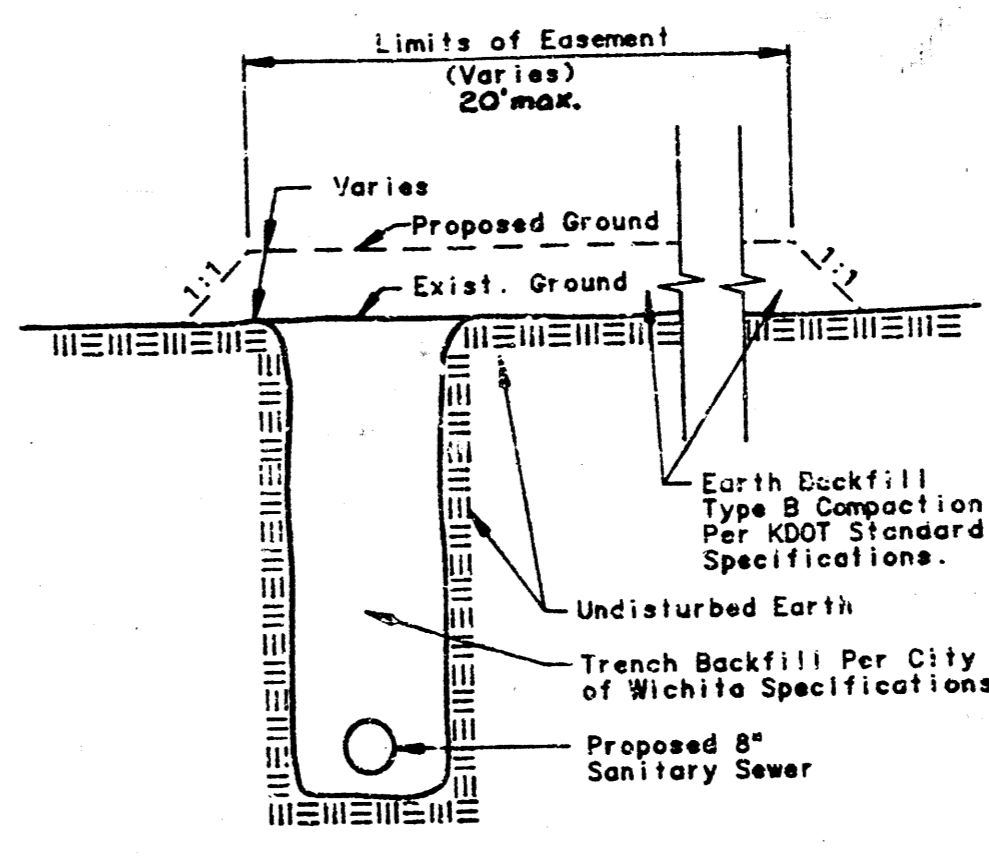
B.M. No. 1	- City Std. Brass Cap in conc. 25' N. & 30' E. of S 1/4 Cor. Sec. 7, T27S, R1W of the 6th P.M. Elev. = 157.93 (City Datum)
B.M. No. 2	- Chisled "H" on W. edge conc. weir. Elev. = 145.715 (City Datum)
B.M. No. 3	- Chisled "H" on NW. bolt Fire Hydrant @ Ponderosa & Cordington. Elev. = 148.830 (City Datum)

BENEFIT DISTRICT

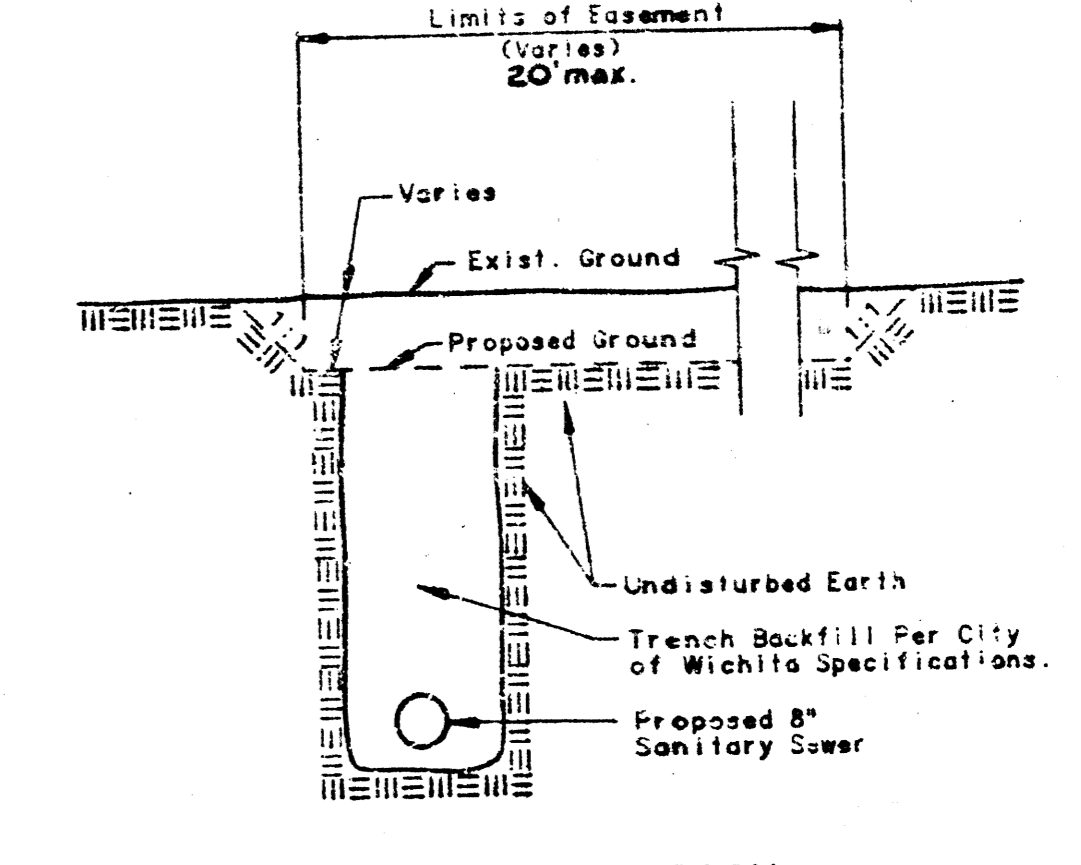
Lots 1 thru 25, Block 1 and Lots 1 thru 15, Block 2 all in Briarwood Estates 4th Addition.
--



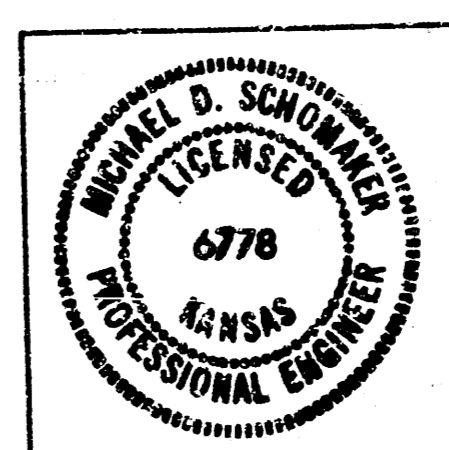
BURIED PIPE STAKING DETAIL
(Staking & Plugging shall be subsidiary to the 6" pipe line installed.)



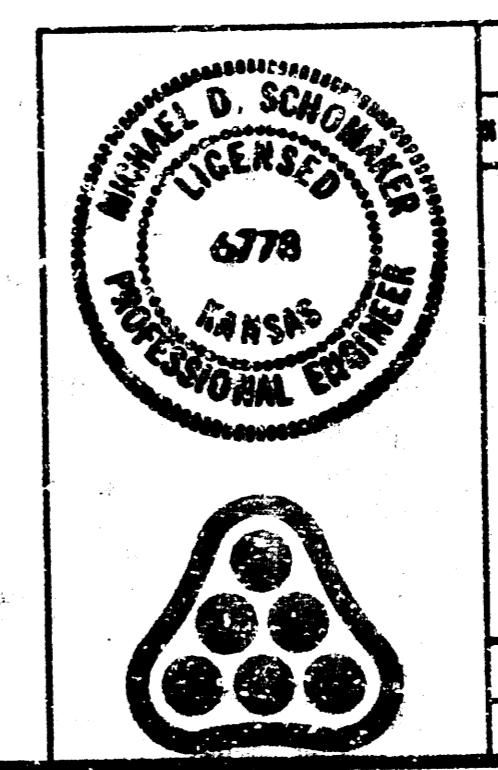
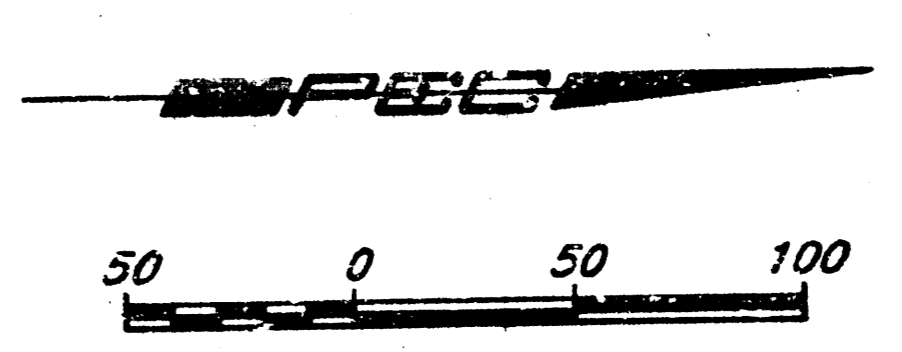
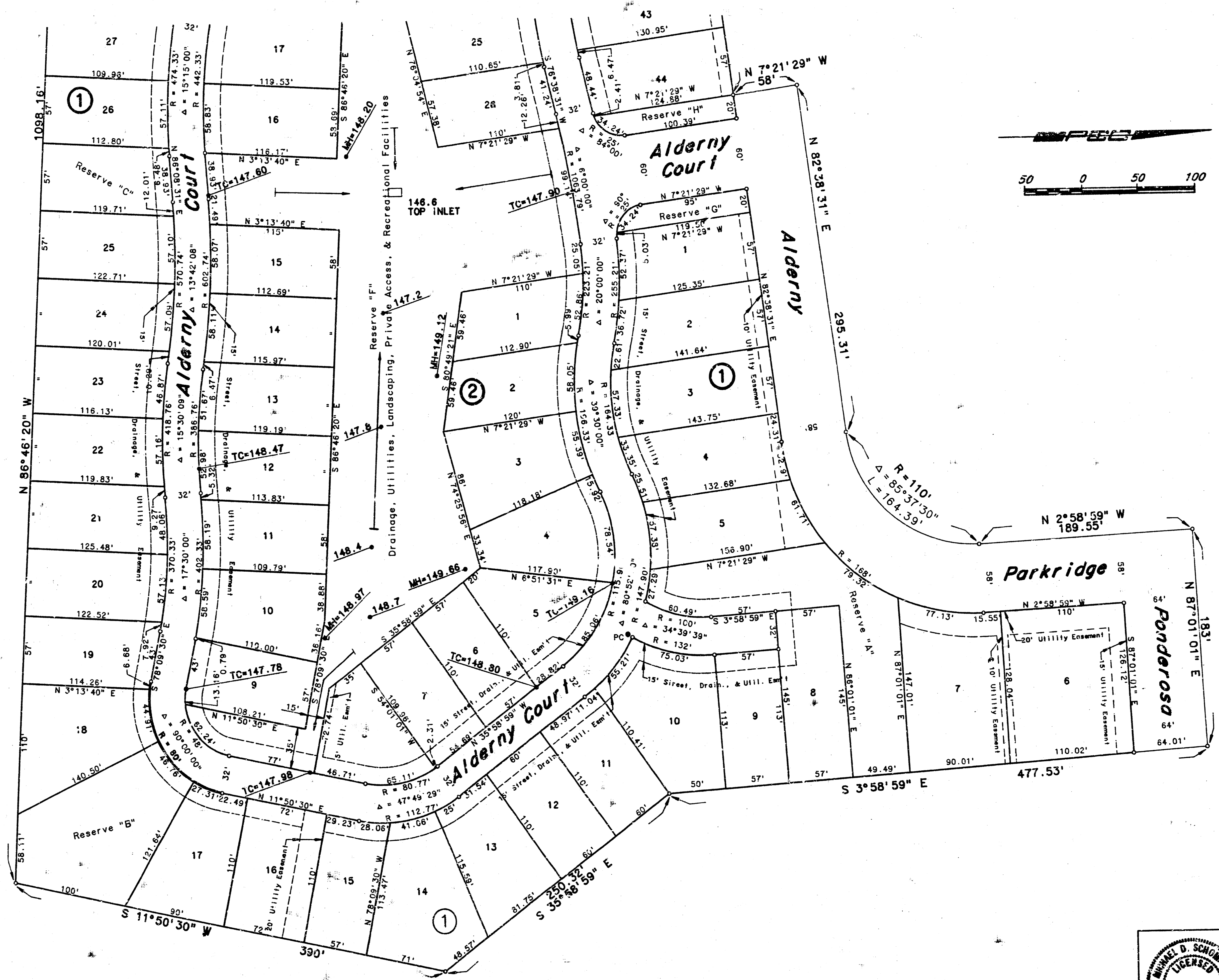
TYPICAL SECTION "FILL" SECTION



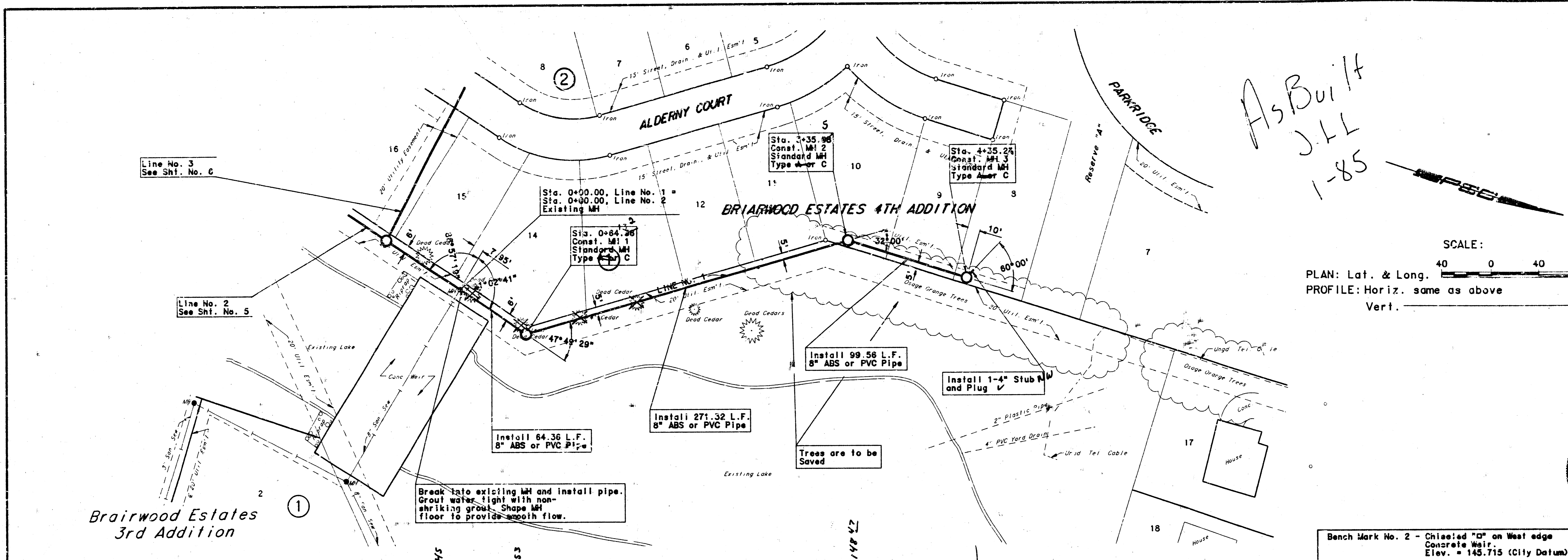
TYPICAL SECTION "CUT" SECTION



Revision		By	Date
LATERAL 15, MAIN 12 OF THE SOUTHWEST INTERCEPTOR SEWER KEY MAP MIKE LINDEBAK, P.E. CITY ENGINEER CITY OF WICHITA PROJECT NO. 488-78-245-81354-000-000-001 PROFESSIONAL ENGINEERING CONSULTANTS, P.A. ENGINEERS WICHITA, KANSAS			
Designed by MDS, KLF	Job No. 34-83713-2	Sht. 2 of 7	
Drawn by CMK	Date MAY, 1984		



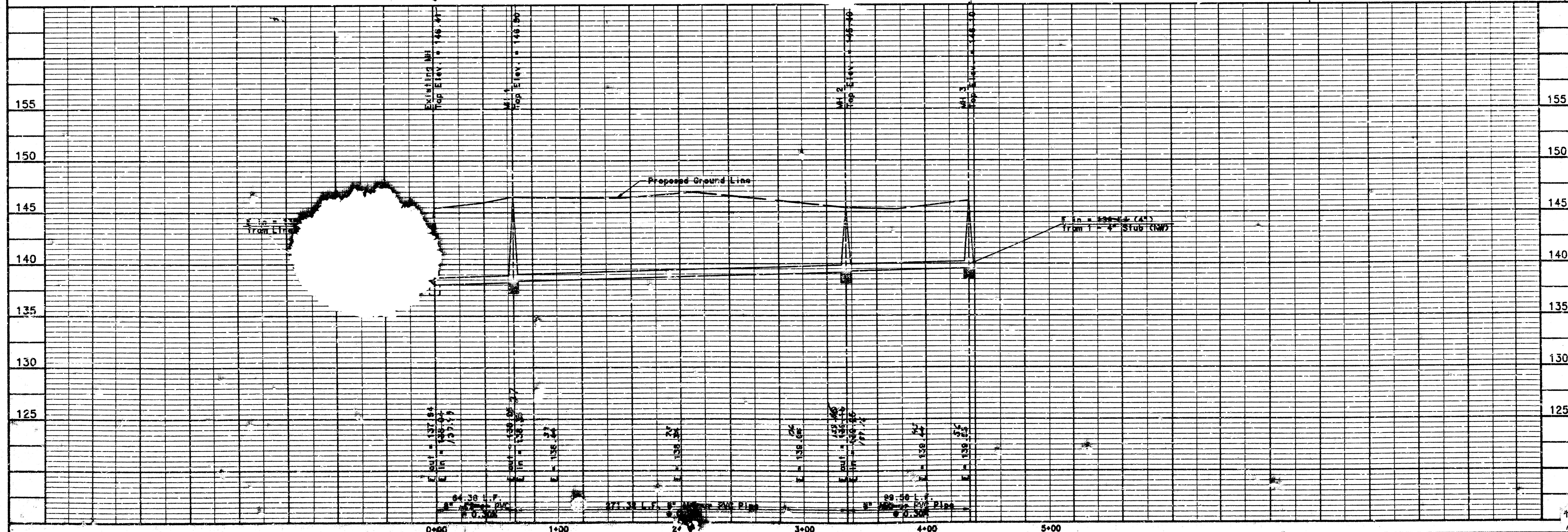
Revision	By	Date
LATERAL 15, MAIN 12 OF THE SOUTHWEST INTERCEPTOR SEWER		
PLAT & DRAINAGE PLAN (PORTION OF BRIARWOOD ESTATES 4TH ADDITION)		
MIKE LINDEBAK, P.E. CITY ENGINEER CITY OF WICHITA PROJECT NO. 468-76-245-81354-000-001		
PROFESSIONAL ENGINEERS CONSULTANTS, P.A. ENGINEERS WICHITA, KANSAS		
Designed by MDS, KLR	Job No. 34-83713-2	Sheet 3 of 7
Drawn by CWK	Date MAY, 1984	



SCALE:
PLAN: Lat. & Long. 40 0 40 80
PROFILE: Horiz. same as above
Vert. _____



Bench Mark No. 2 - Chiseled "O" on West edge Concrete Weir.
Elev. = 145.715 (City Datum)



LINE NO. 1
LATERAL TO MAIN 12 OF THE
SOUTHWEST INTERCEPTOR SEWER

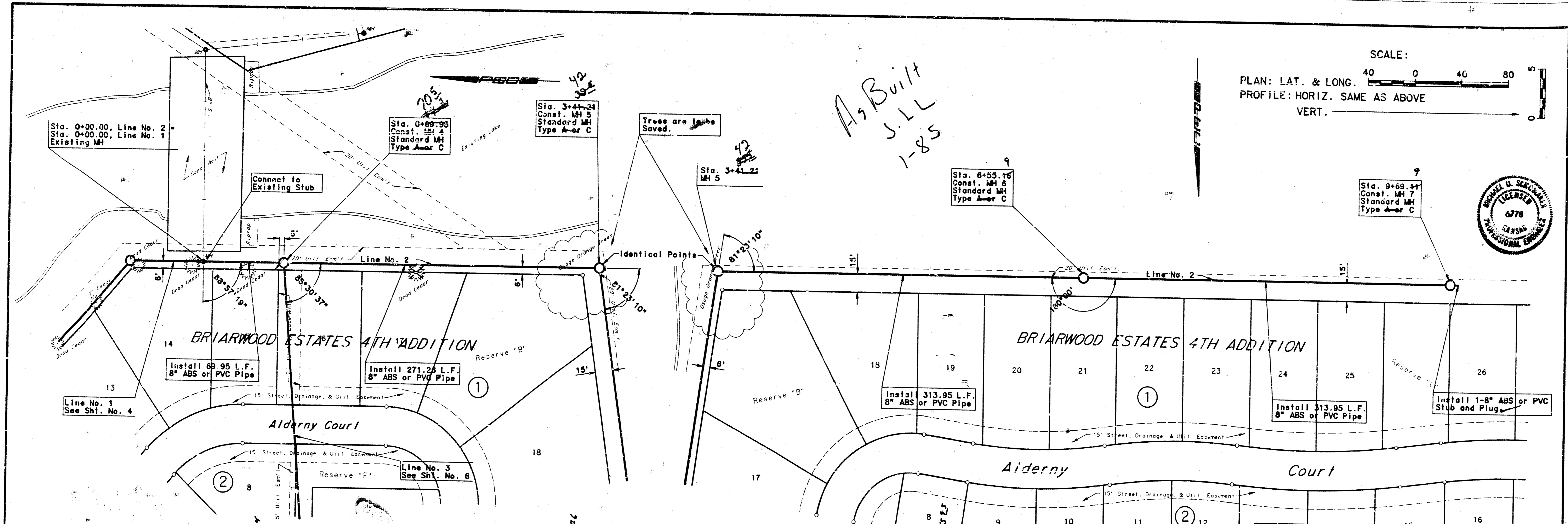
PROFESSIONAL ENGINEERING CONSULTANTS, P.A.
MOULTON, IOWA

Designed By: MDS, KLR
Drawn By: yoda, CWK

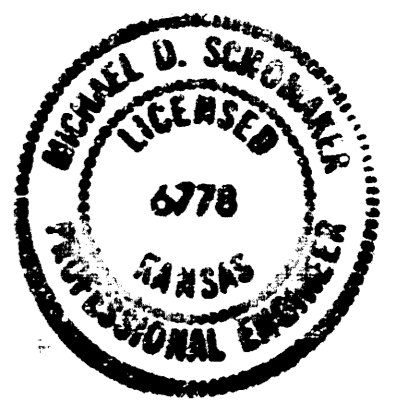
Mike L. Indebak, P.E., CITY ENGINEER
C.O.W. Proj. No. 468-76-242-B1534-000-001

Date: MAY, 1984

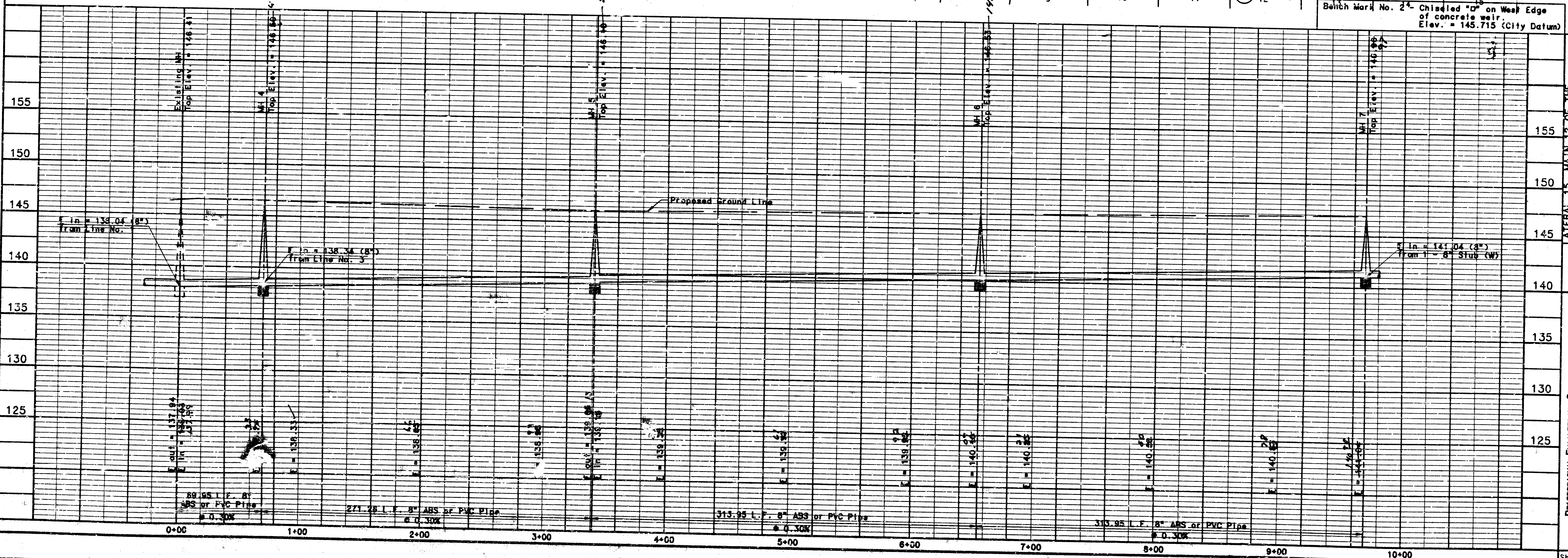
Sheet 4 of 7



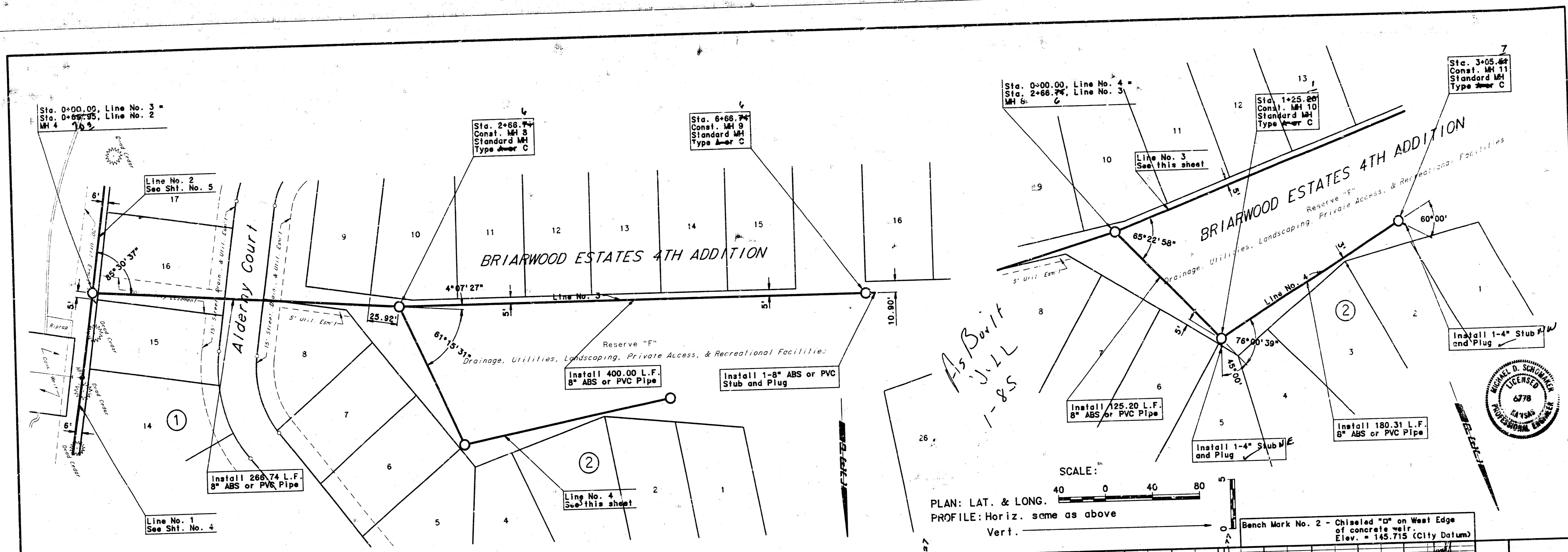
SCALE:
 PLAN: LAT. & LONG. 40 0 40 80
 PROFILE: HORIZ. SAME AS ABOVE
 VERT. 0



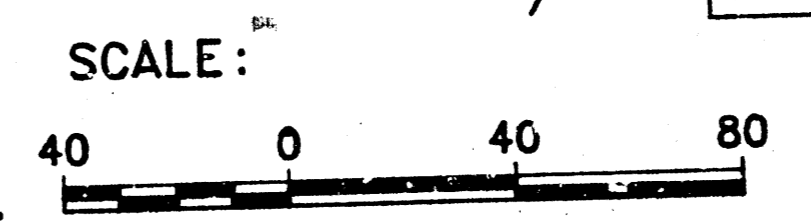
*As Built
 S.L.L
 1-85*



LINE NO. 2
 LATERAL TO MAIN 12 OF THE
 SOUTHWEST INTERCEPTOR SEWER
 PROFESSIONAL ENGINEERING CONSULTANTS, P.A.
 ENGINEERS
 WICHITA, KANSAS
 Designed By: M.S. KIR
 Drawn By: yodo, CWK
 Job No. 34-83713-2
 Date MAY, 1984
 MIKE LINDEBAK, P.E., CITY ENGINEER
 C.O.W. Proj. No. 468-76-245-81354-C00-C00-001

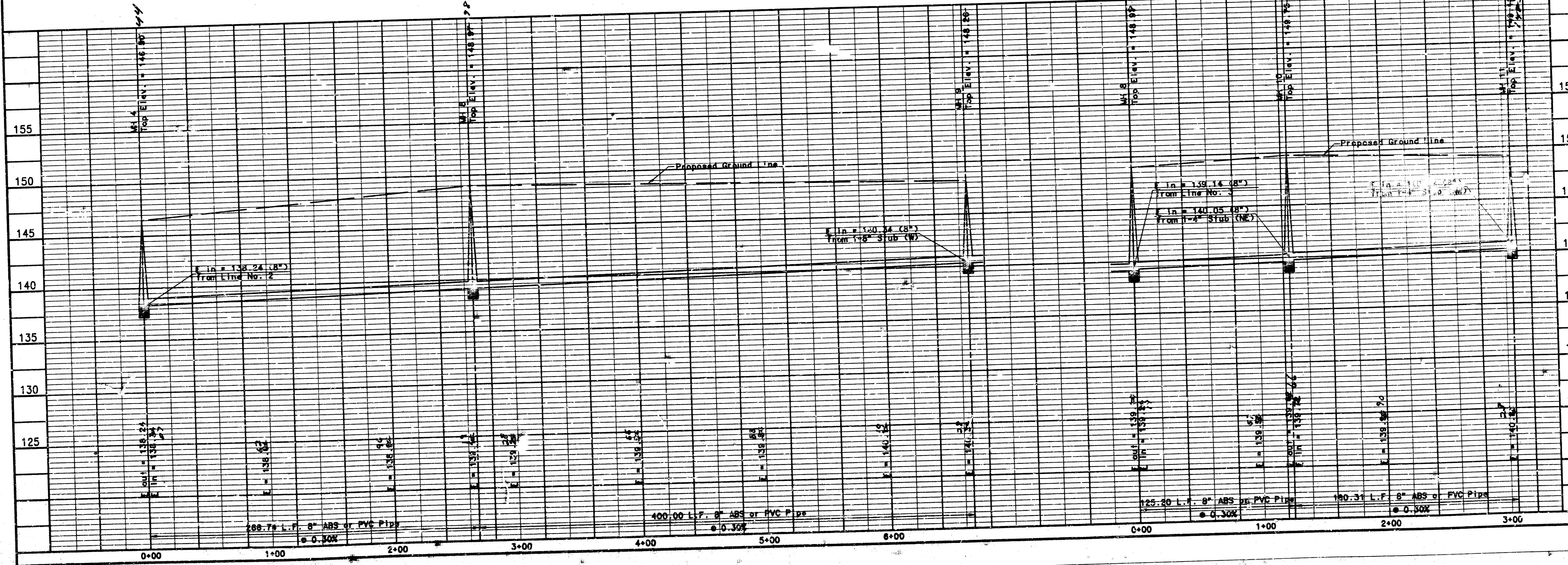
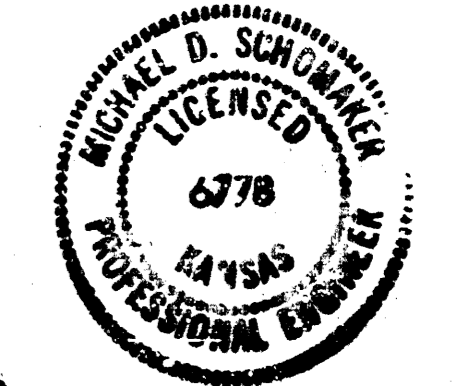


*As Built
J.L.L.
1-85*



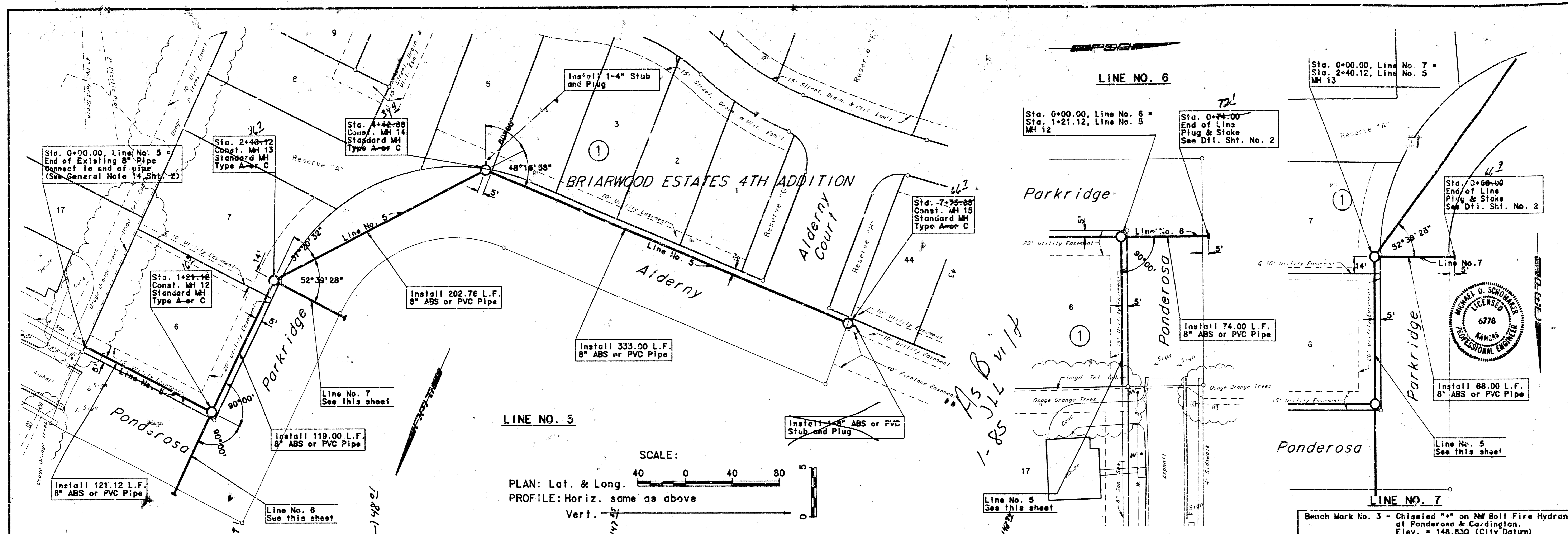
PLAN: LAT. & LONG.
PROFILE: Horiz. same as above
Vert. _____

Bench Mark No. 2 - Chiseled "a" on West Edge of concrete well.
Elev. = 145.715 (City Datum)

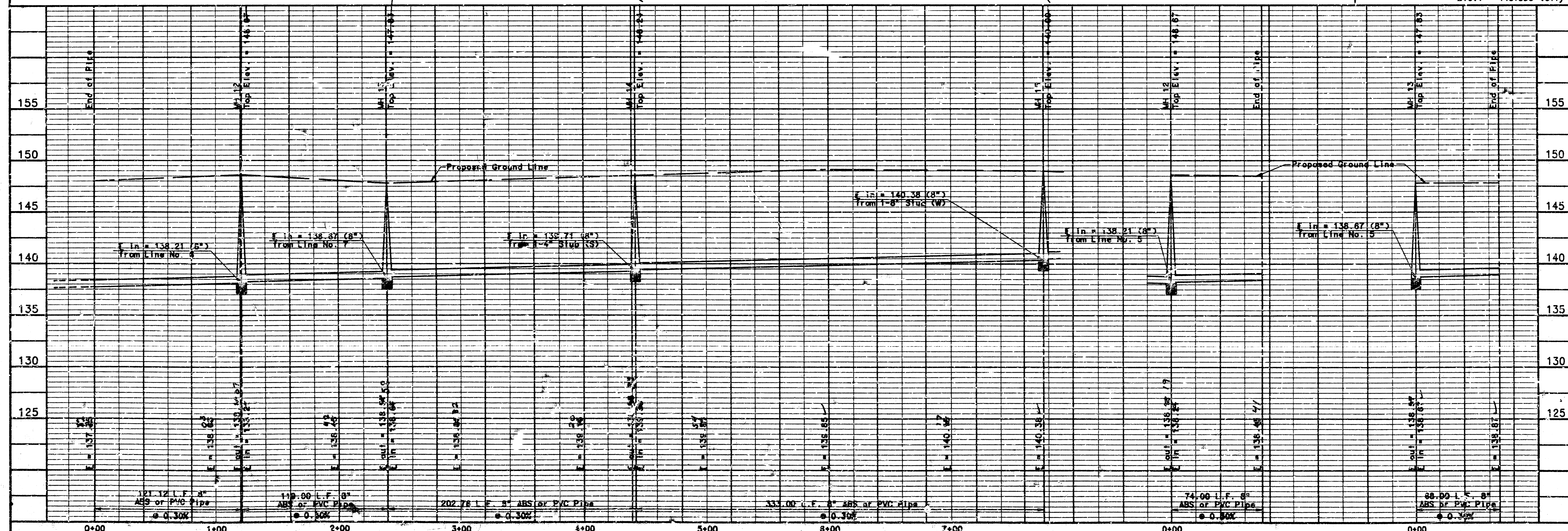


PROFESSIONAL ENGINEERING CONSULTANTS, P.A.
 ENGINEERS
 WICHITA, KANSAS
 DESIGNED BY: MDS, KLR
 JOB NO. 34-63713-2
 DATE: MAY, 1984
 DRAWN BY: yodo, CMK
 SHEET 6 OF 7

LATERAL INTERCEPTOR SEWER
 LINE NO'S 3 AND 4
 MIKE LINDEBAK, P.E., CITY ENGINEER
 C.O.W. Proj. No. 468-76-245-81354-000-001



SCALE:
 PLAN: Lat. & Long.
 PROFILE: Horiz. same as above
 Vert. 1" = 10'



Bench Mark No. 3 - Chiselled on an MH Bolt Fire Hydrant at Ponderosa & Cordington Elev. = 148.830 (City Datum)

PROFESSIONAL ENGINEERING CONSULTANTS, P.A.
 MICHAEL D. SANDMANN
 LICENSED PROFESSIONAL ENGINEER
 5778
 KANSAS

DESIGNED BY: MDS, KLR
 DRAWN BY: Jodd, CWK
 JOB NO. 34-6313-2
 DATE: MAY, 1984

LATERAL TO MAIN 12 OF THE SOUTHWEST INTERCEPTOR SEWER
LINE NO'S 5, 6 AND 7