

NOTE: CONTRACTOR SHALL EXAMINE EXISTING 6" LINE TO BE CONNECTED TO MANHOLE AT STATION 0+15 PRIOR TO INSTALLING ANY SEWER PIPE SO FIELD ENGINEER CAN VERIFY RELATIONSHIP OF THE EXISTING 6" LINE AND THE PROPOSED 6" S-S SEWER. CONTRACTOR SHALL TAKE PRECAUTIONS AS NECESSARY TO PREVENT DAMAGE TO SIDEWALK AND STREET PAVEMENT DUE TO CONSTRUCTION OPERATIONS. ANY DAMAGE TO SIDEWALK OR STREET PAVEMENT DUE TO CONTRACTOR'S OPERATIONS SHALL BE REPAIRED BY THE CONTRACTOR AT HIS EXPENSE.

NOTES

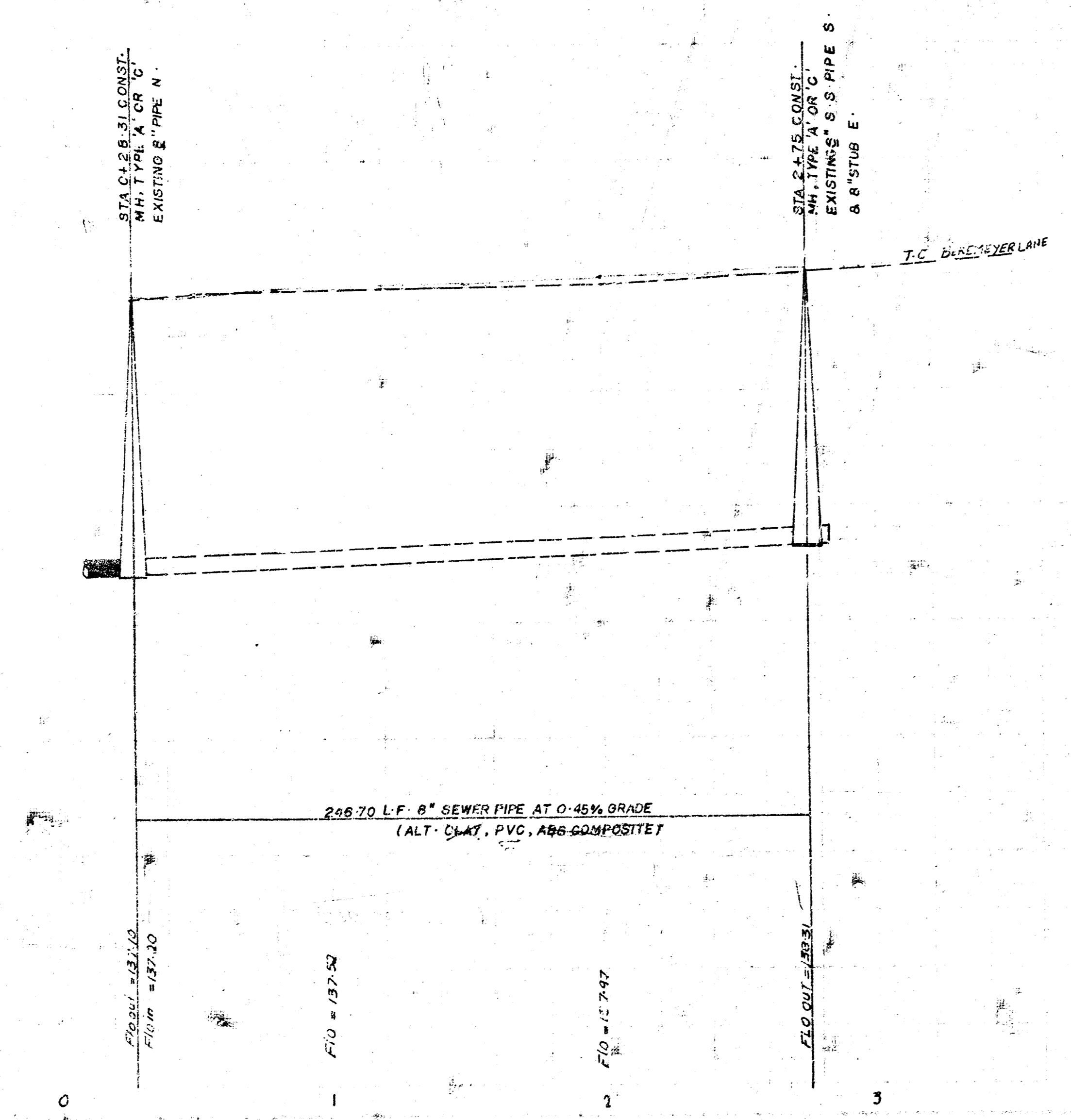
- 1- FIELD ENGINEER TO TAKE TIES ALL IRONS THAT MAYBE DISTURBED DURING CONSTRUCTION AND REPLACE ANY THAT ARE DESTROYED.
- 2- CONTRACTOR CONTACT UTILITY COMPANIES FOR LOCATION OF ANY UNDERGROUND LINES.
- 3- FIELD ENGINEER TO SET TOP OF MANHOLES TO FINISH GRADE AS DETERMINED BY DEVELOPER.
- 4- CONTACT BUILDING CONTRACTOR FOR ADJUST EXISTING 6" SAN-SEWER PIPE AND HOOK TO M.H. AT STA-2+75 AND CONTRACTOR TO OBTAIN PERMIT FOR CONNECTION.

NOTE
BENEFIT DISTRICT IS E-200' OF LOT 1, ASCENSION LUTHERAN CHURCH ADD. (E-TYLER & BEKEMEYER)

B-M = 153.22 S-E Conc. Porch House # 8514 Bekemeyer

Scale
PLAN 1" = 40'
Profile Horiz 1" = 40'
Vert 1" = 5'

150
145
140
135



LAT 126 SWI
468-76-245-80556-000-000-001
City of Wichita, Kansas
Dept of Public Works - Engineering Div.
Dean Sellers Acting City Engineer
DATE