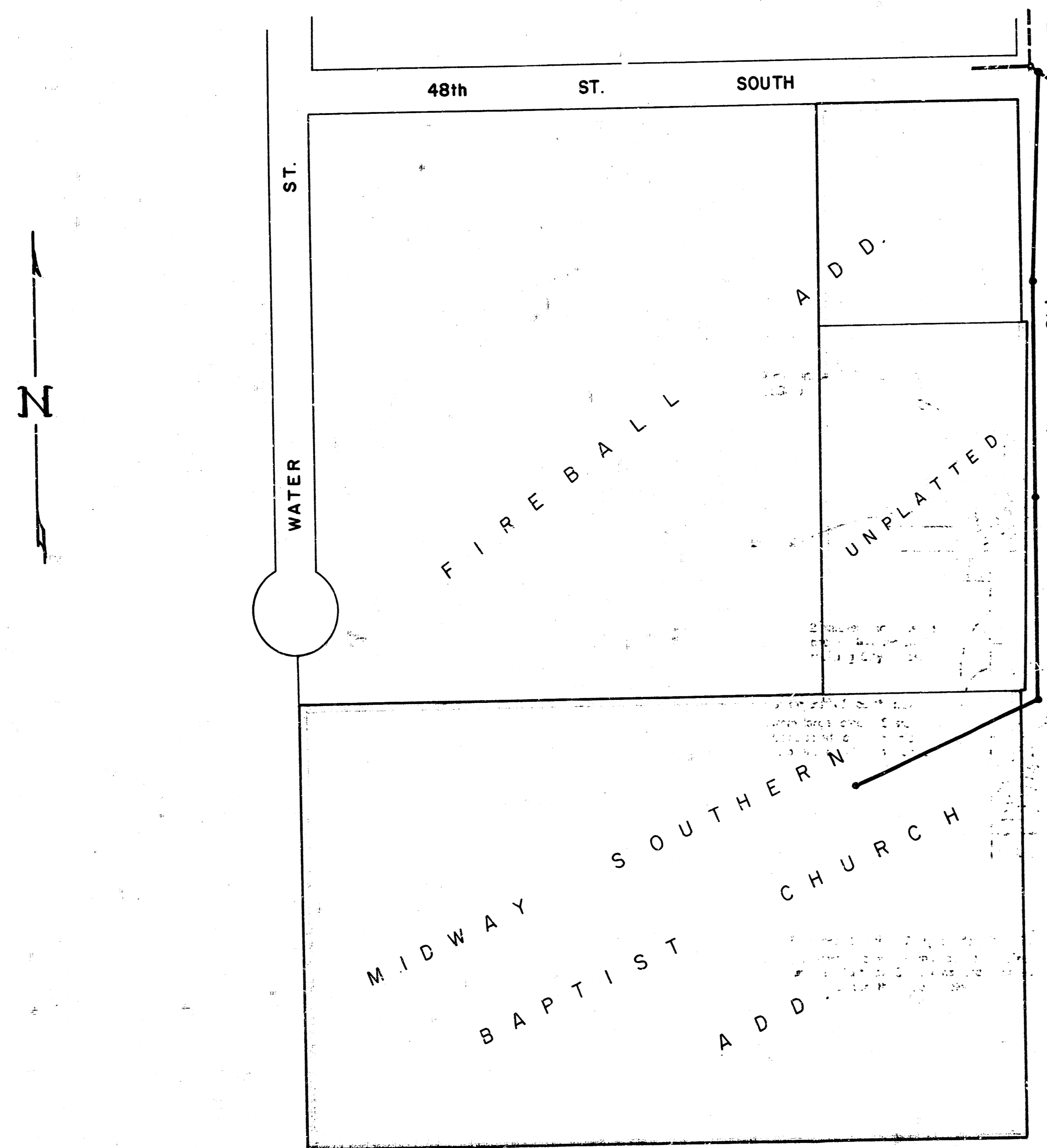


LATERAL 15, MAIN 2 SOUTHWEST INTERCEPTOR SEWER

Project no. 468-76-245-80572-000-000-001

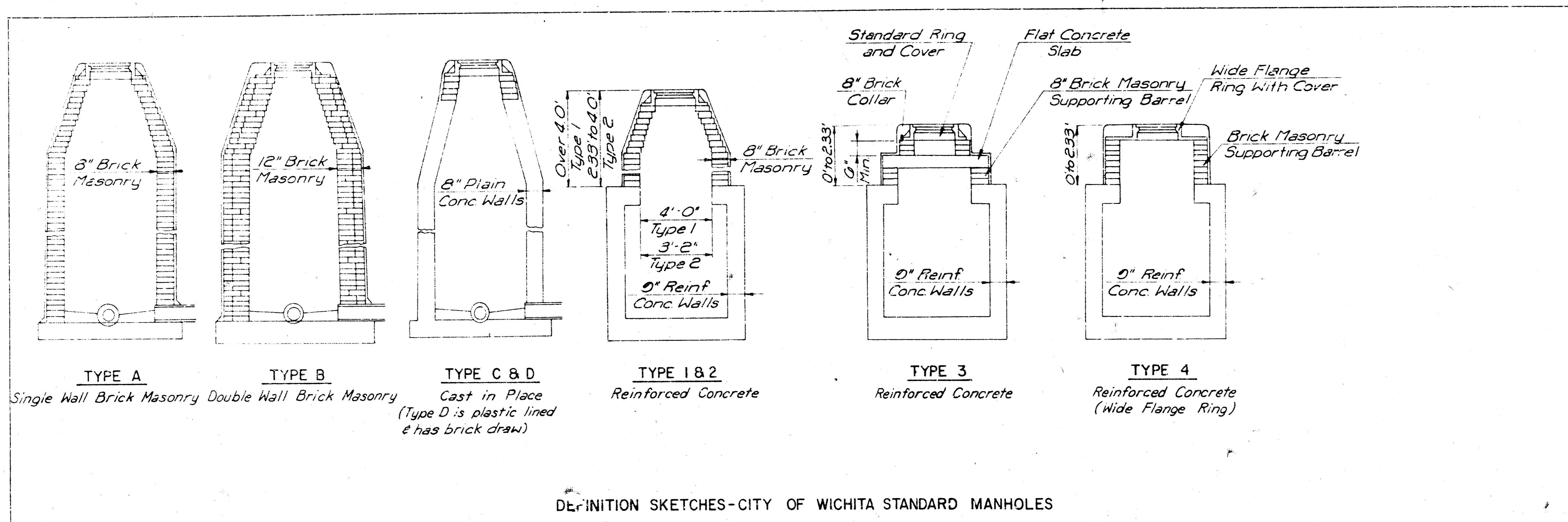
CITY OF WICHITA, KANSAS
MIKE LINDEBAK CITY ENGINEER



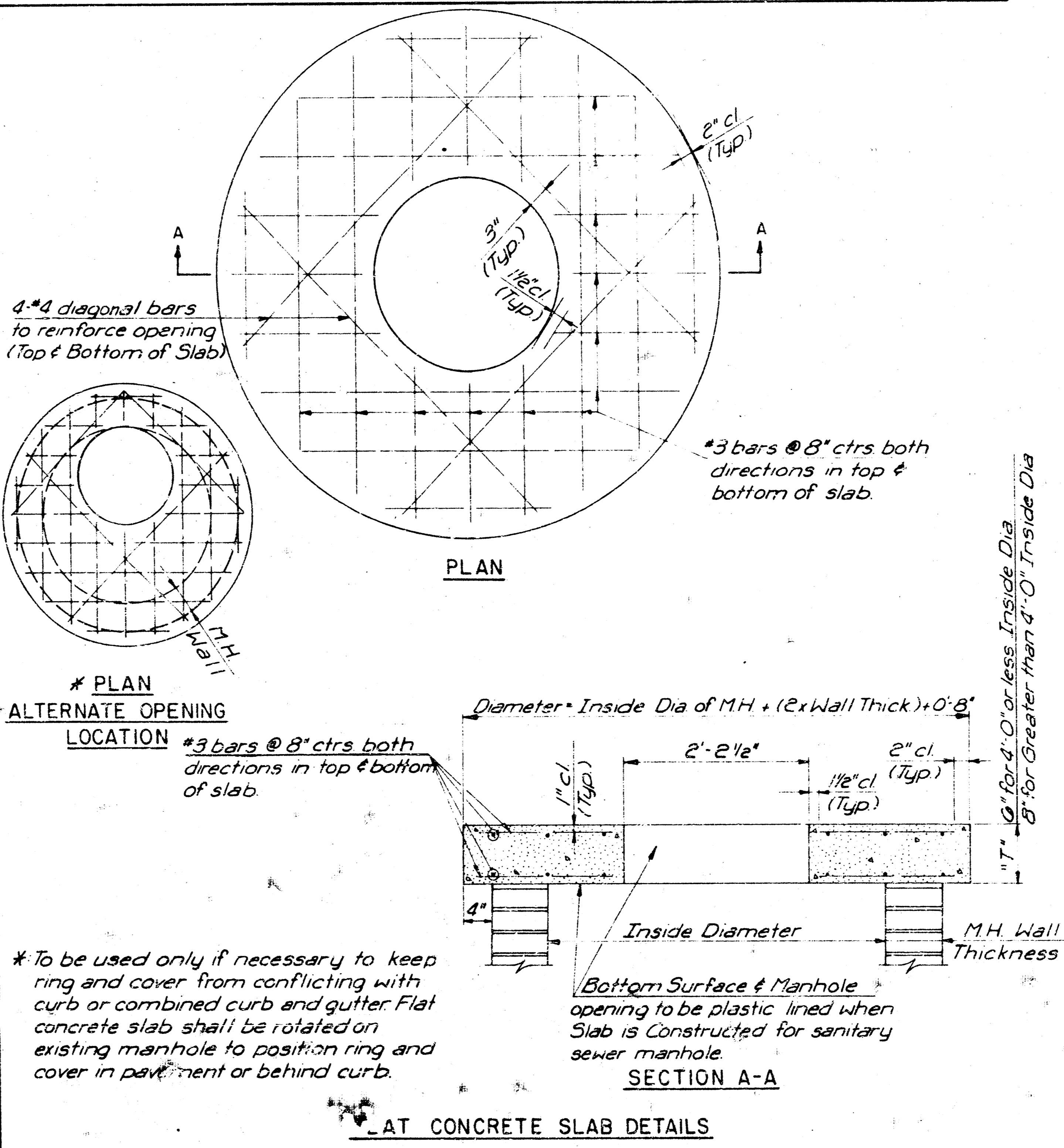
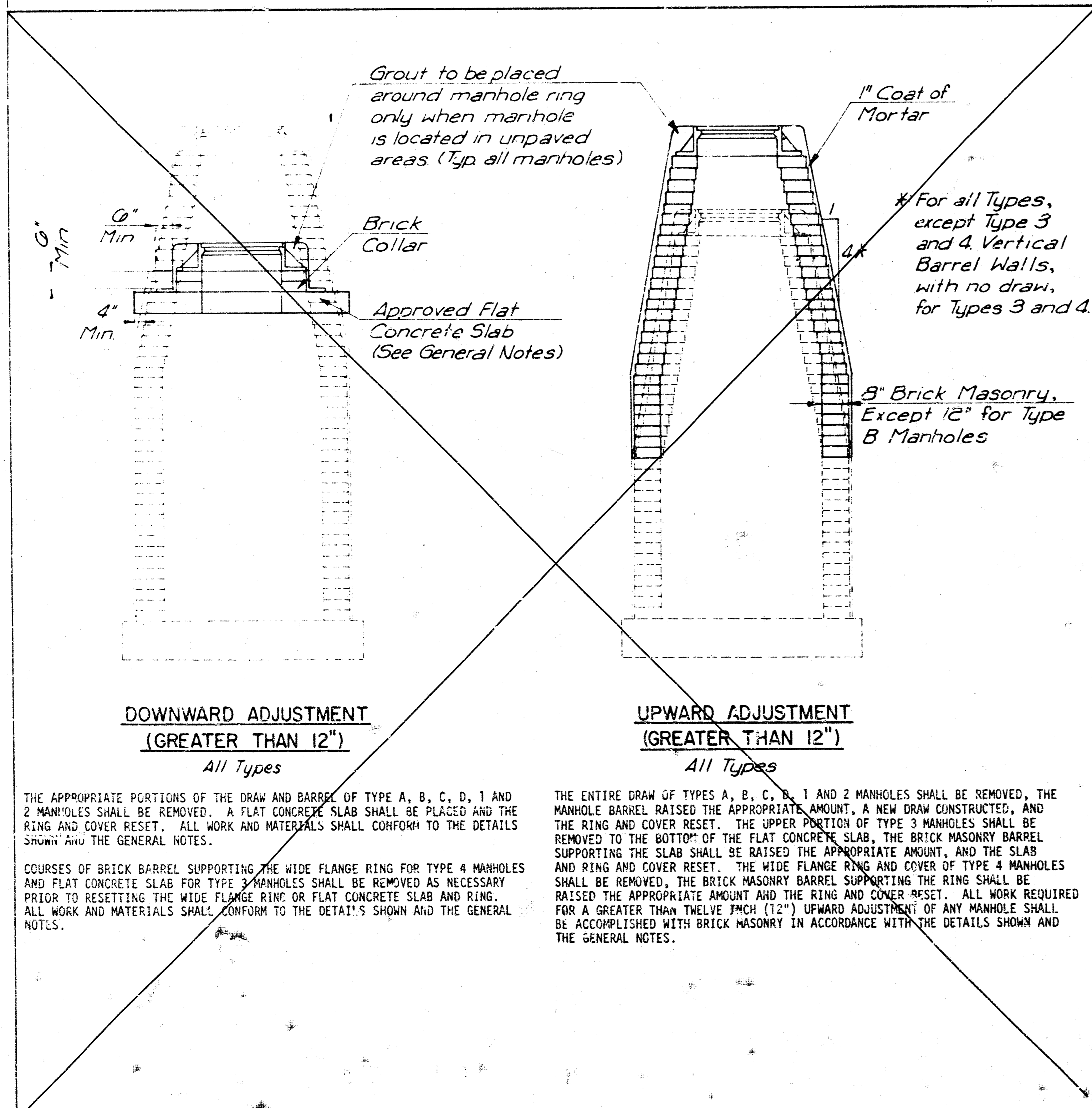
As Built
J.L.L.
3-89



REVISION 1/10/03 1/3



DEFINITION SKETCHES-CITY OF WICHITA STANDARD MANHOLES



NOTE: USE ALTERNATE OPENING LOCATION WITH RING AND COVER TOWARD WEST SIDE OF MANHOLE, IN ORDER TO PROVIDE CLEARANCE FROM PROPOSED CURB. CONSTRUCT BRICK COLLAR ON TOP OF FLAT CONG. SLAB, MINIMUM 8" THICK. SET TOP OF FLAT CONG. SLAB AT ELEV. 84.80.

MANHOLE ADJUSTMENT DETAILS	
STA. 7+10	
Project no. 468-78-245-80572-000-000-001	
CITY OF WICHITA, KANSAS	
M. E. LINDEBAK - CITY ENGINEER	
Designed by	Checked by
Drawn by	Figure
	Job No.