

KING LAURSEN D.L.K. 47

N.E. Corner 47th St & Broadway

Broadway Avenue

47th Street South

Broadway

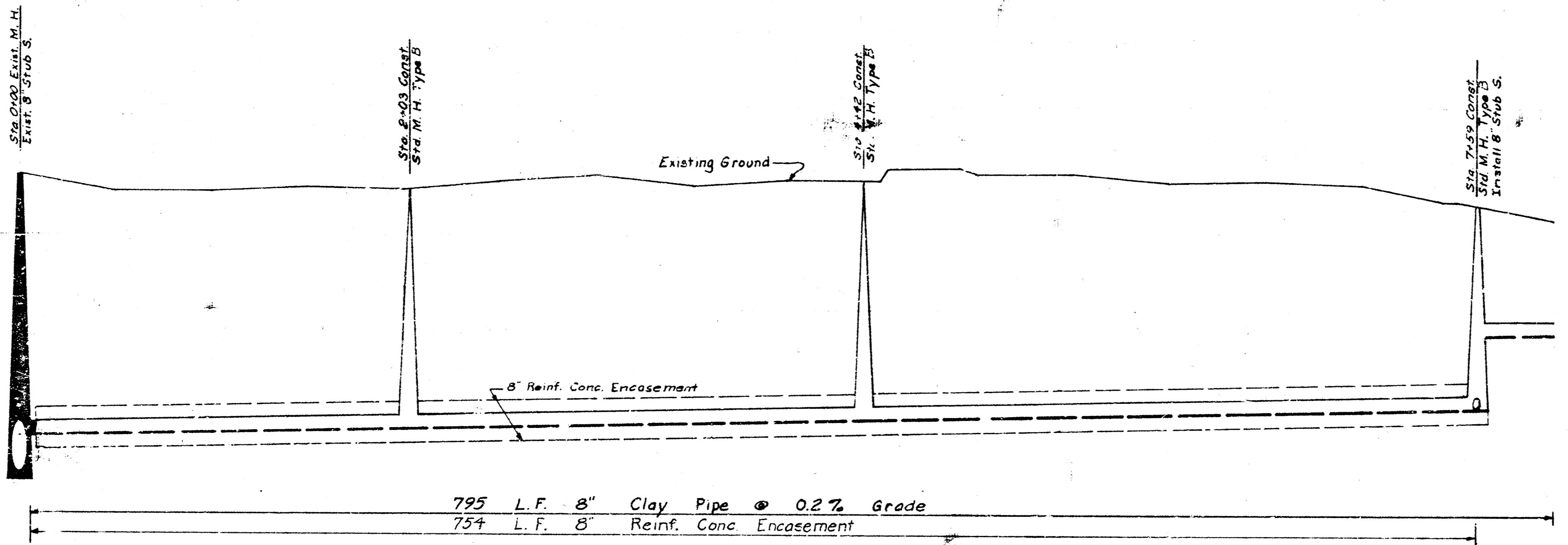
47

Plaza

48th Street South

Plan Scale 1"=40'
Profile Scale 1"=40' Hor.
1"=4' Vert.

B.M. 86.797 Standard 28" E. & 28" N. of S Broadway & E 47th St So. (N. Sec. Cor.)
B.M. 86.99 R.R. Spike N. Side P.P. N.W. Cor. 48th St. So. & Broadway.



Sta. 0+00 East M.H.
Exist. 8" Stub S.

Sta. 2+03 Const.
Std. M.H. Type B

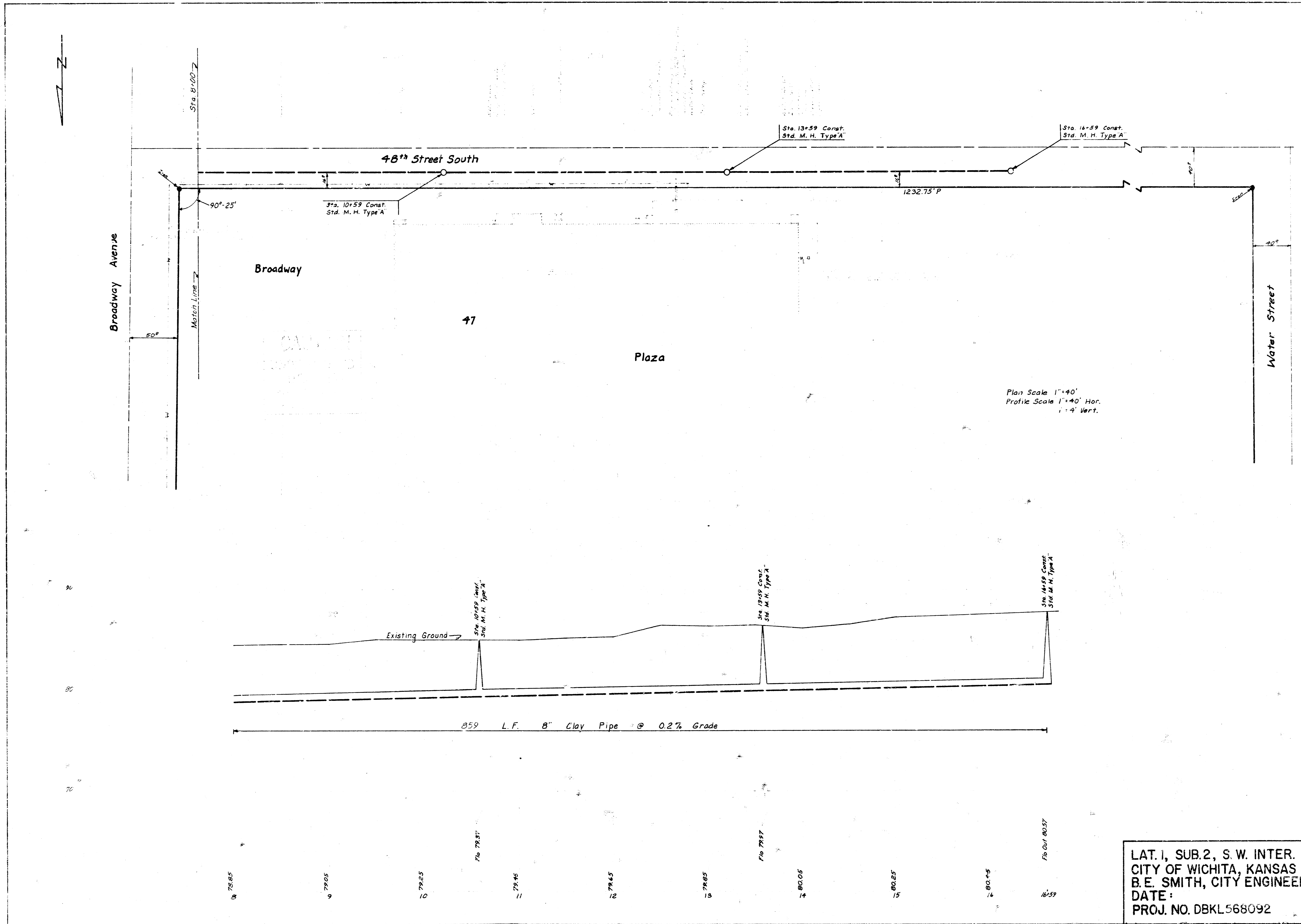
Sta. 4+42 Const.
Std. M.H. Type B

Sta. 7+59 Const.
Std. M.H. Type B
Install 8" Stub S.

795 L.F. 8" Clay Pipe @ 0.2% Grade
754 L.F. 8" Reinf. Conc. Encasement



LAT. 1, SUB. 2, S.W. INTER.
CITY OF WICHITA, KANSAS
B.E. SMITH, CITY ENGINEER
DATE: APR 24, 1925
PROJ. NO. DBKL568092



LAT. 1, SUB. 2, S. W. INTER.
CITY OF WICHITA, KANSAS
B. E. SMITH, CITY ENGINEER
DATE:
PROJ. NO. DBKL568092