

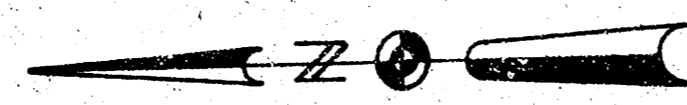
LATERAL 99, DRY CREEK MAIN 2, SS.NO. 12

PROJECT NO. DBKL 574079

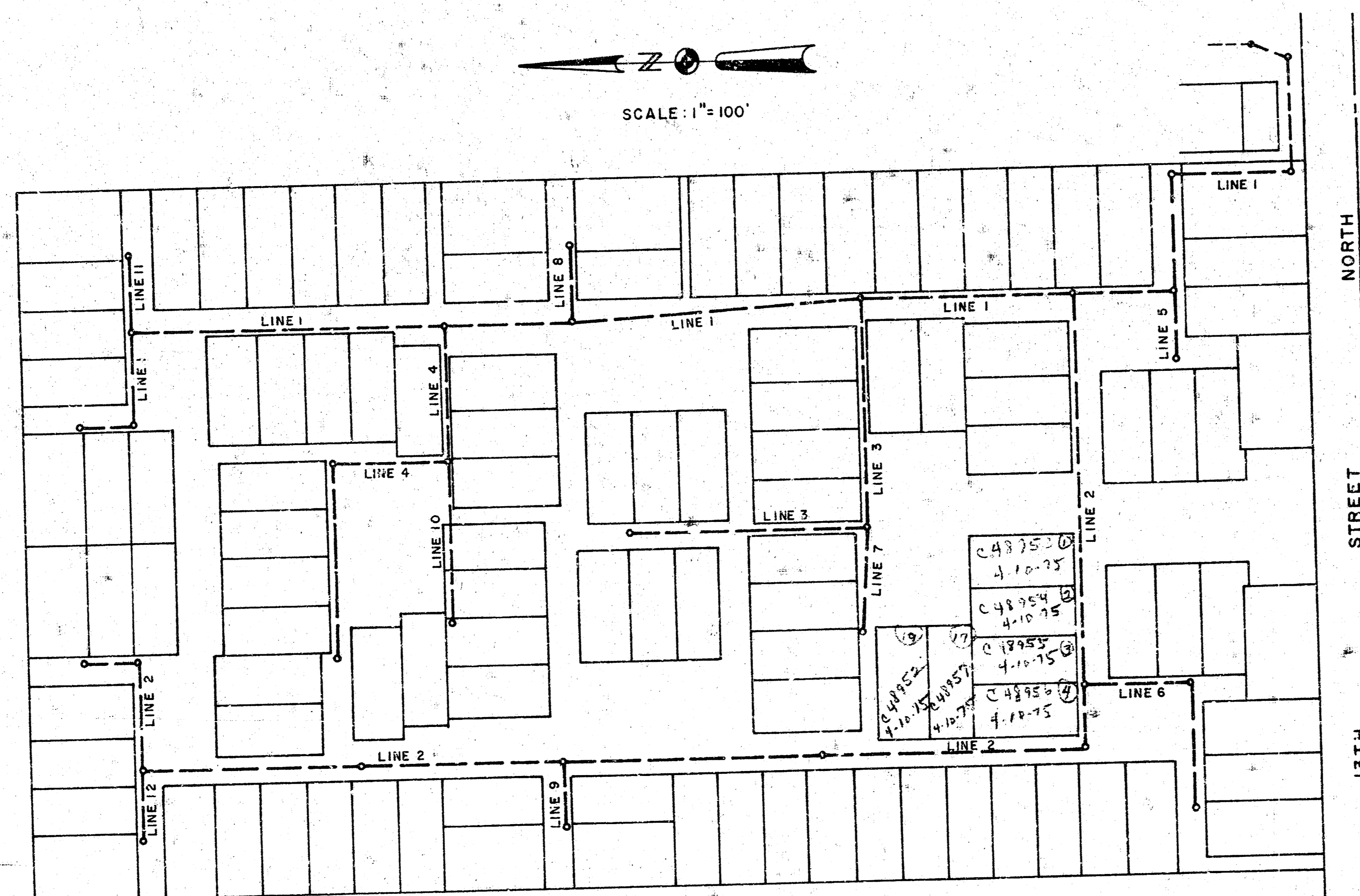
CITY OF WICHITA, KANSAS

R.W. LINN CITY ENGINEER

JAN. 1975



SCALE: 1" = 100'



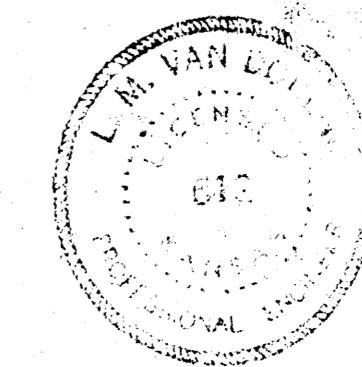
LOCATION MAP

SCALE: 1" = 100'

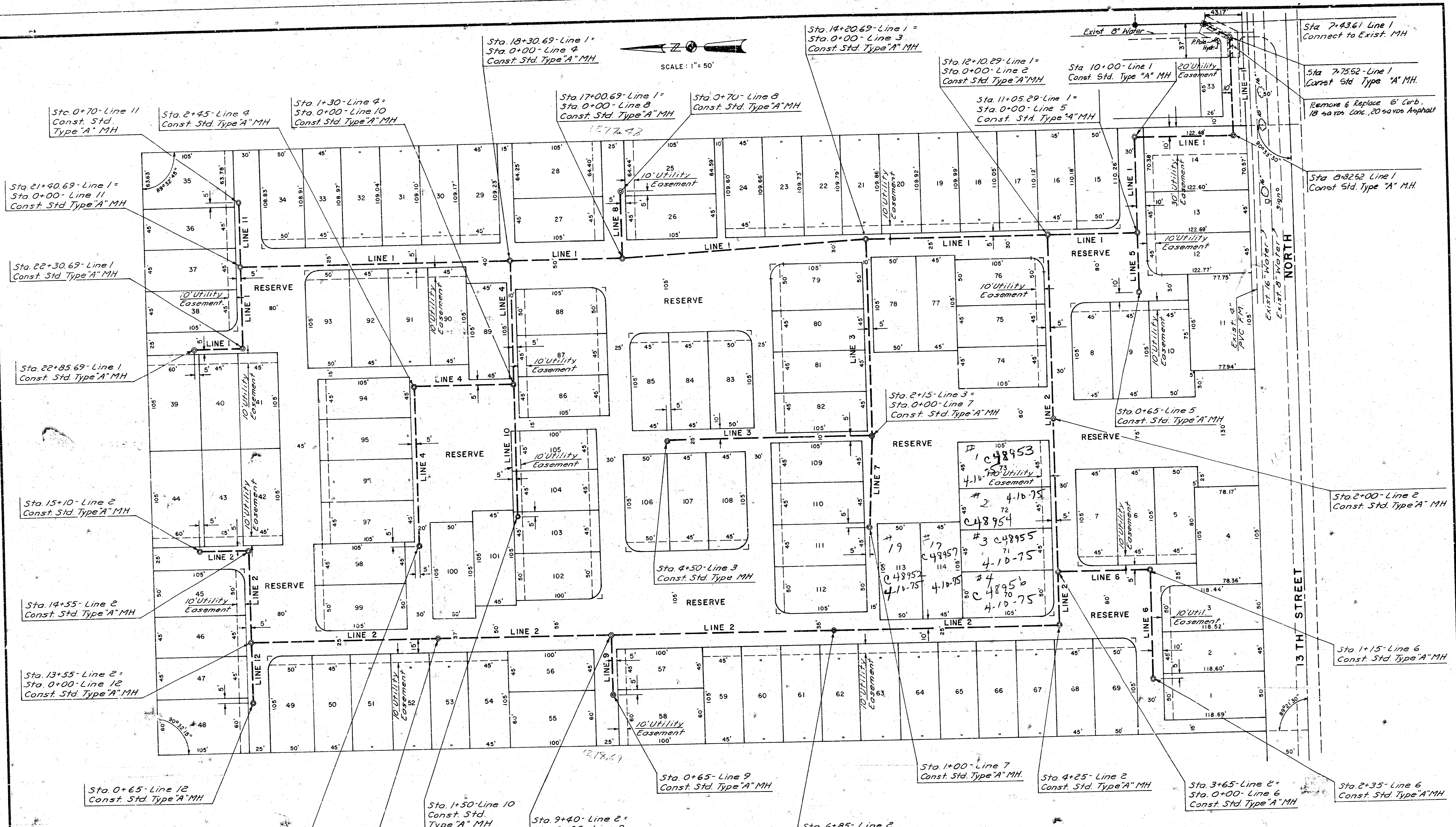
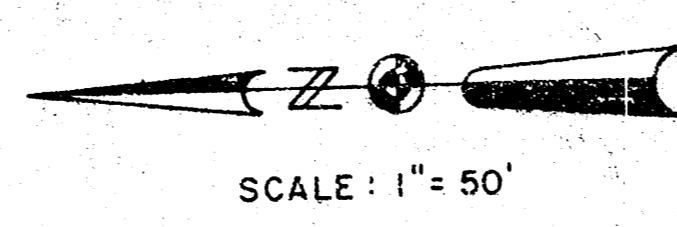
NOTE: TYPE "C" MANHOLES MAY BE USED AT ALL LOCATIONS WHERE TYPE "A" MANHOLES ARE SPECIFIED. CLAY PIPE STUBS ARE TO BE INSTALLED IN MANHOLES WHEN REQUIRED TO SERVE ANY ONE LOT.

INDEX TO DRAWINGS

SHEET TITLE	SHEET NO.
TITLE SHEET	1
PLAN SHEET	2
PROFILES	3-4
SEWER APPURTENANCES	5-6



DESIGN		SHEET 1 OF 6
DR. BY		
CK. BY		
DATE		
JOB NO.		
VAN DOREN-HAZARD-STALLINGS-SCHNACKE ENGINEERS-ARCHITECTS . . . TOPEKA, KANSAS		



#1	19	488952	4-10-75
#2	17	488957	4-10-75
#3	71	488955	4-10-75
#4	72	488954	4-10-75
#5	73	488953	4-10-75

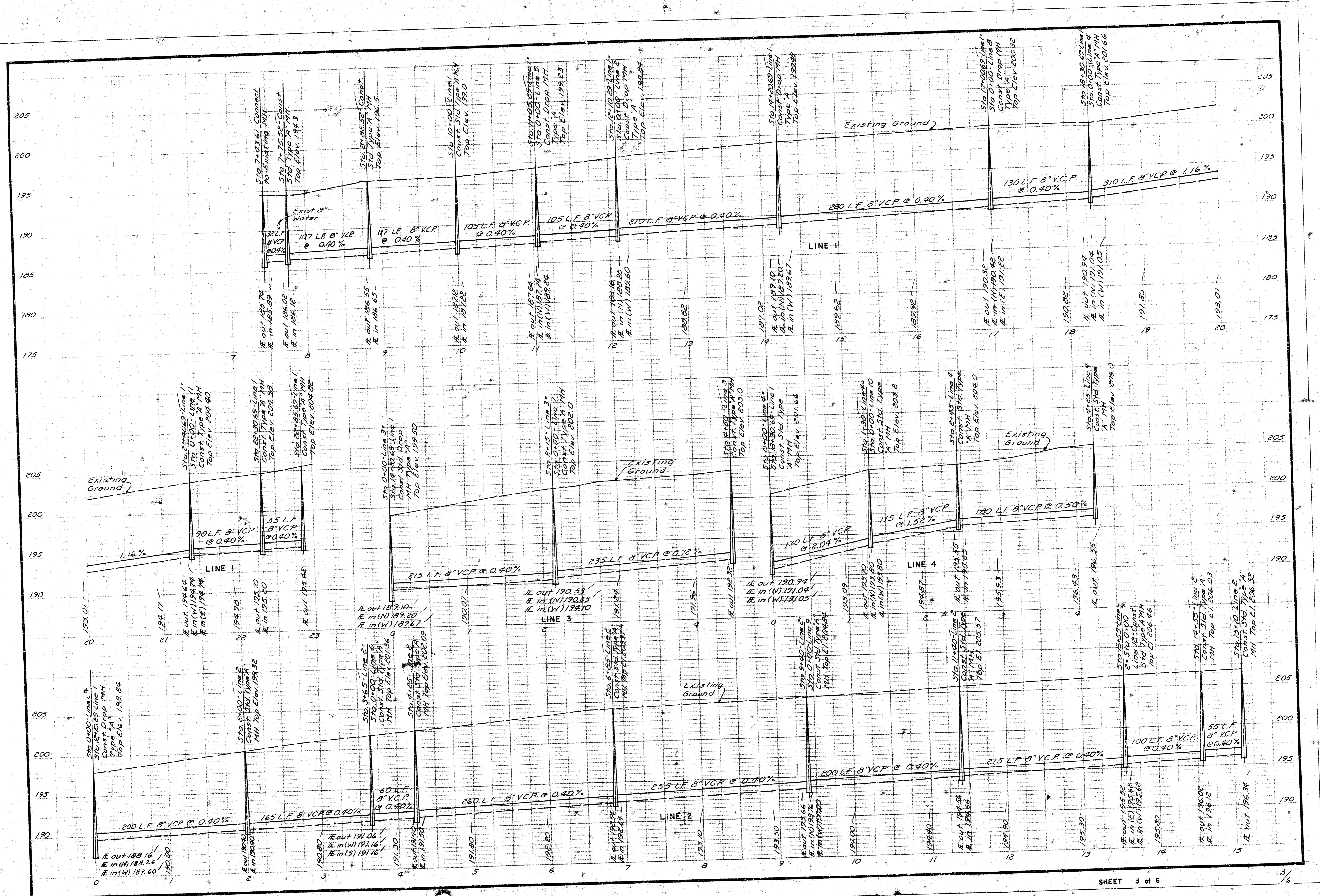
Bench Mark - Wichita Disk - 42' N. & 38' E. 13th & Rock - Elev. 126.84

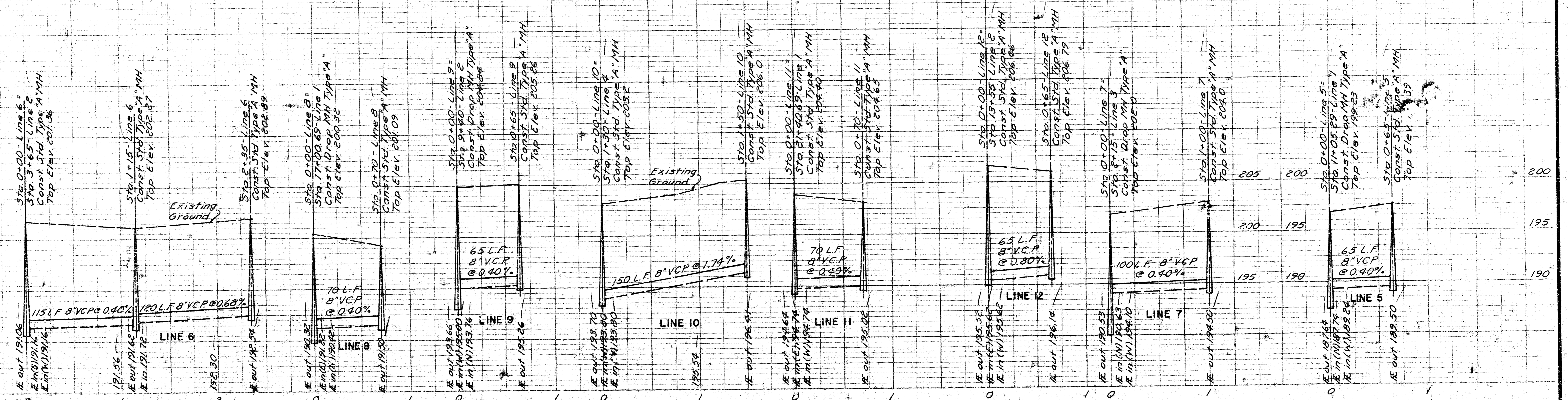
Note: Contractor may construct Type "C" Manholes at his own option.

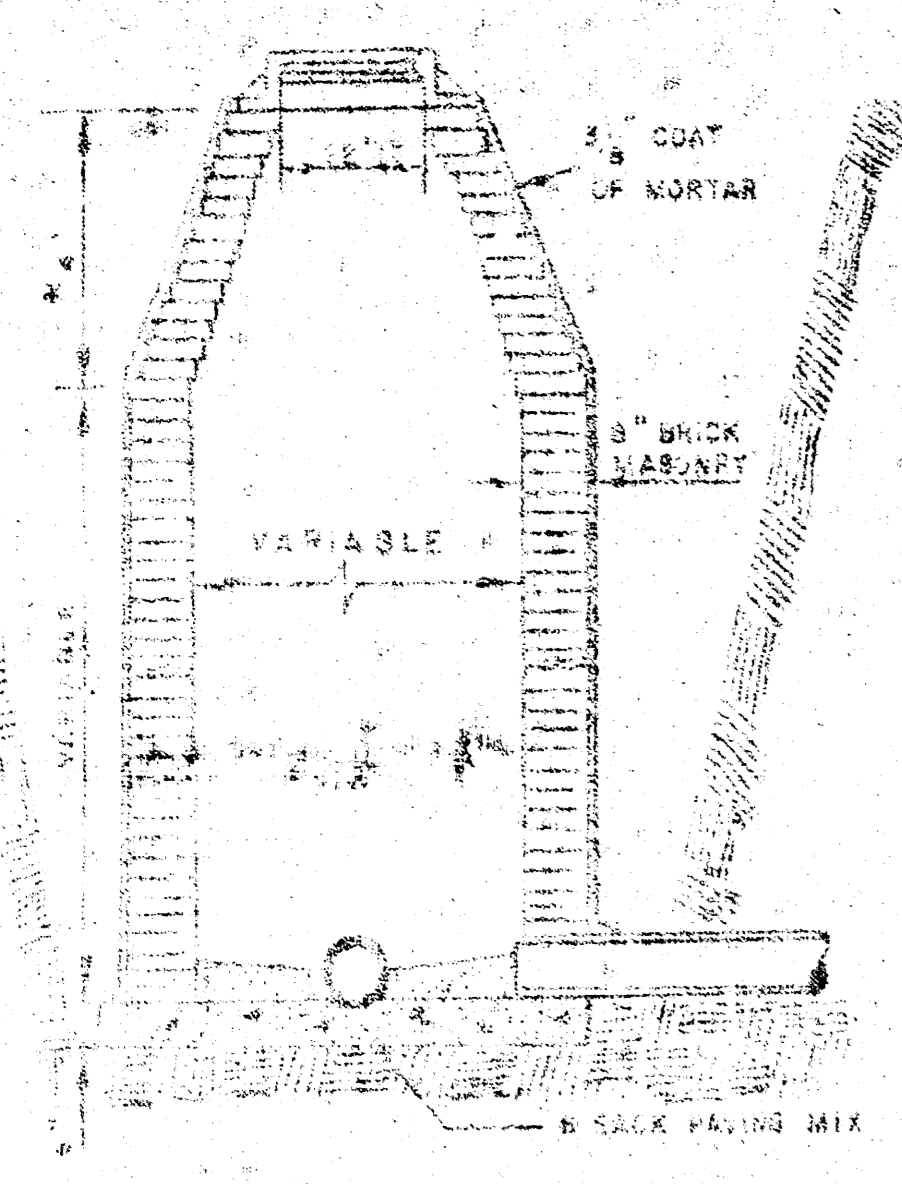
Note: All Reserves are dedicated for the construction operation and maintenance of public utilities.

NOTE: CLAY PIPE STUBS TO BE INSTALLED IN MANHOLES WHEN NECESSARY TO SERVE ANY ONE LOT.

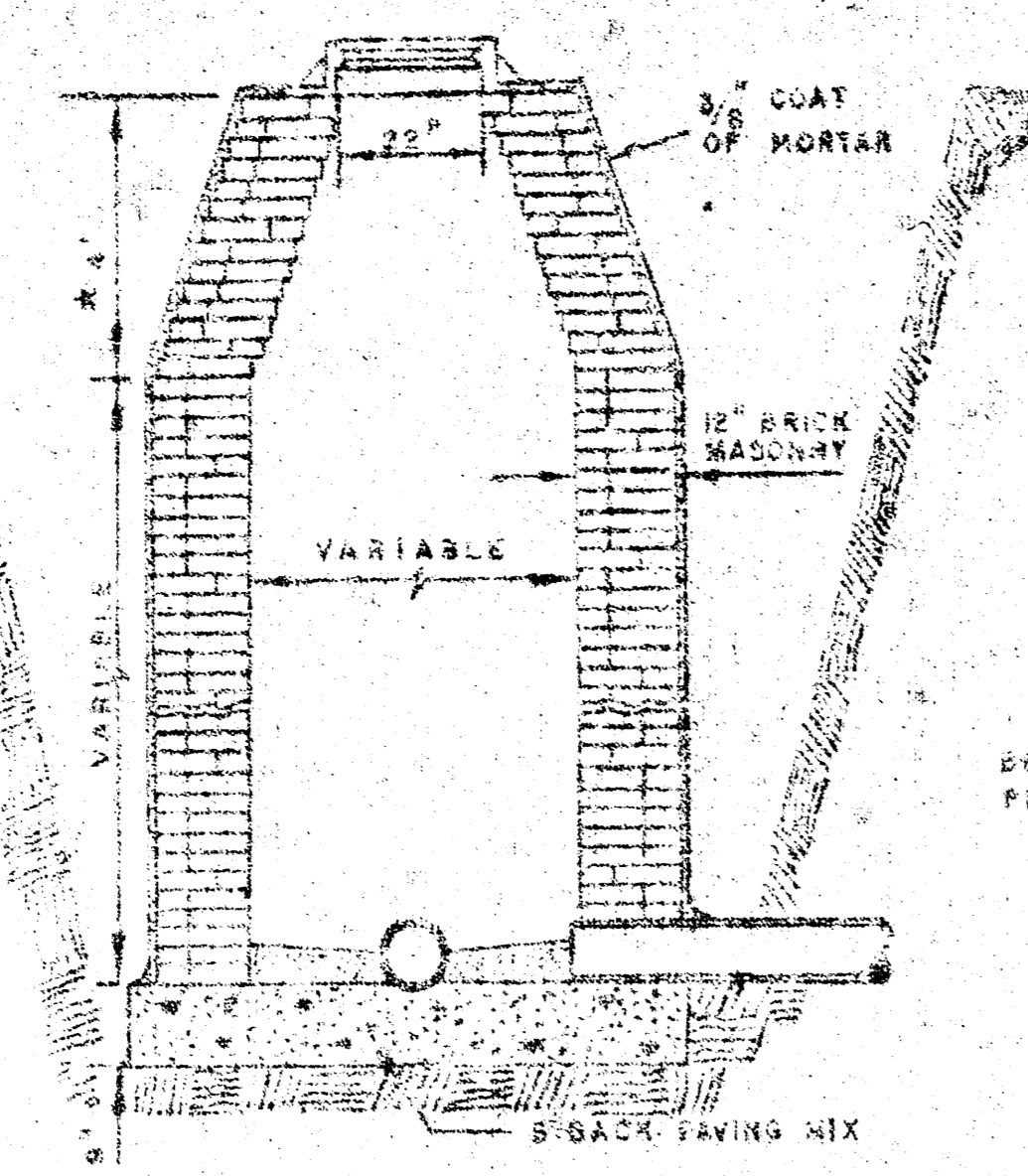
DESIGN	LEISURE LIVING VENTURES
DR. BY	FIRST ADDITION
CK. BY	
DATE	
JOB NO.	
VAN DOREN-HAZARD-STALLINGS	
ENGINEERS-ARCHITECTS . . . TOPEKA, KANSAS	
SHEET	2/6
OF	



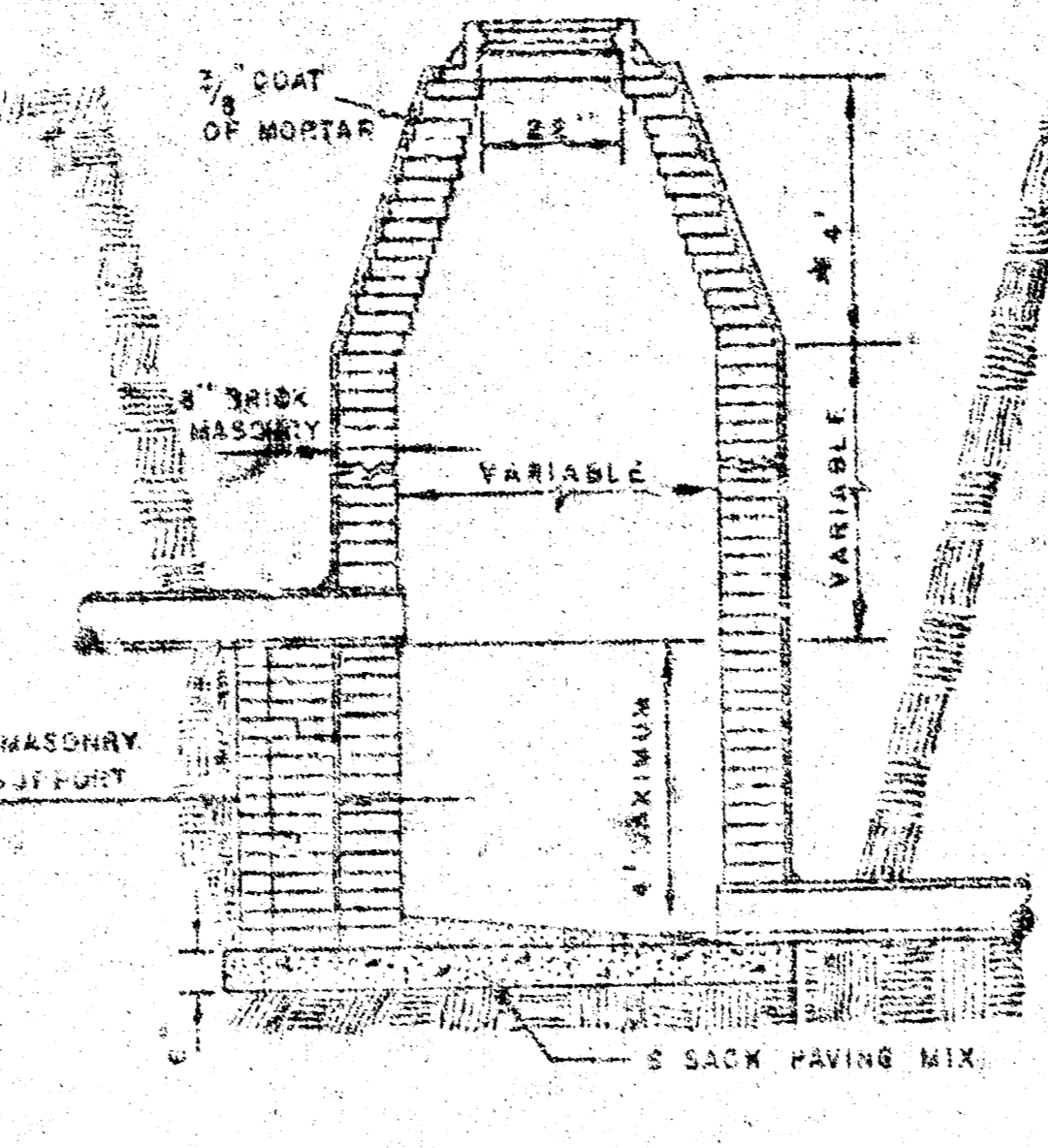




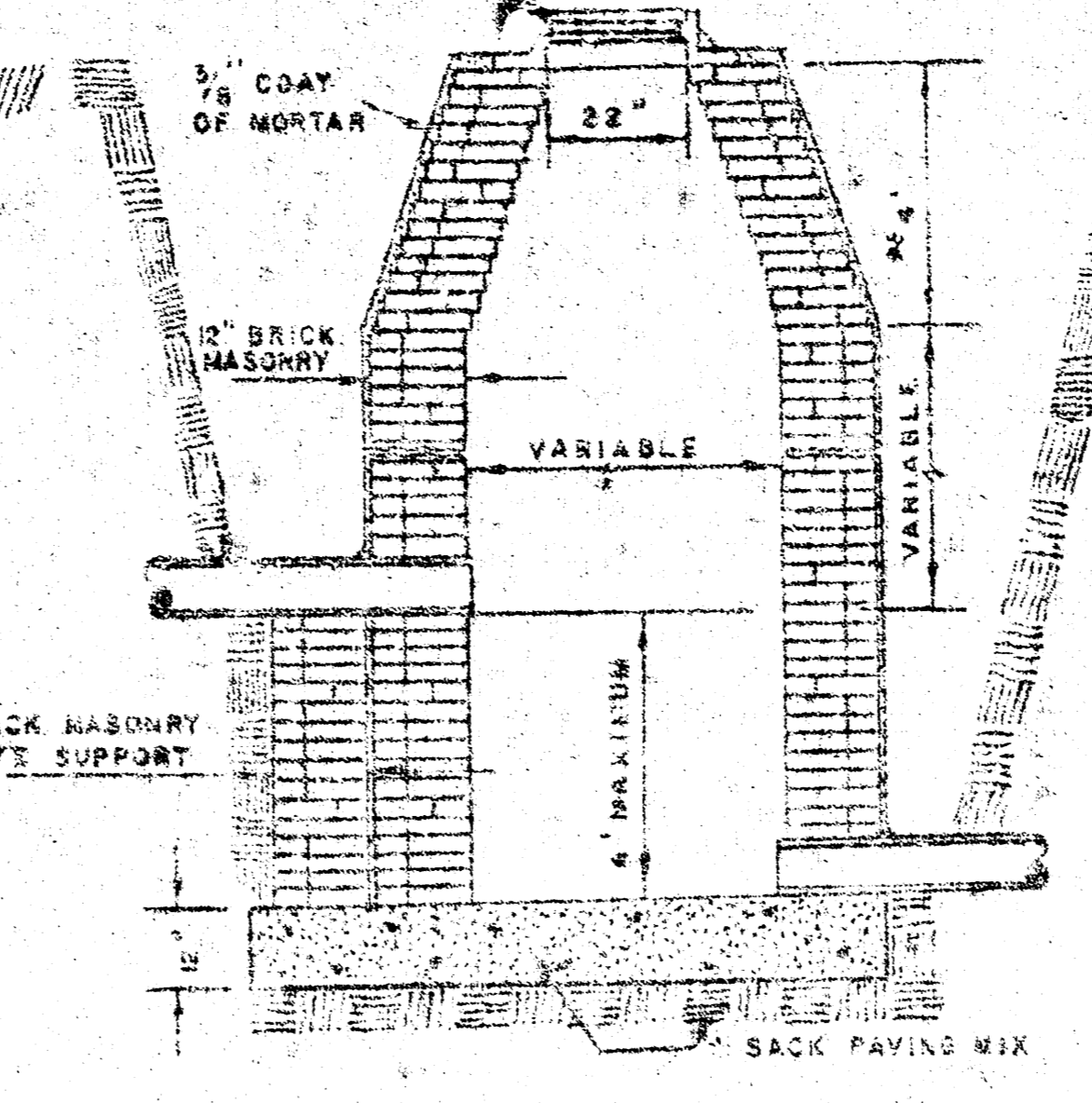
STANDARD MANHOLE TYPE "A"



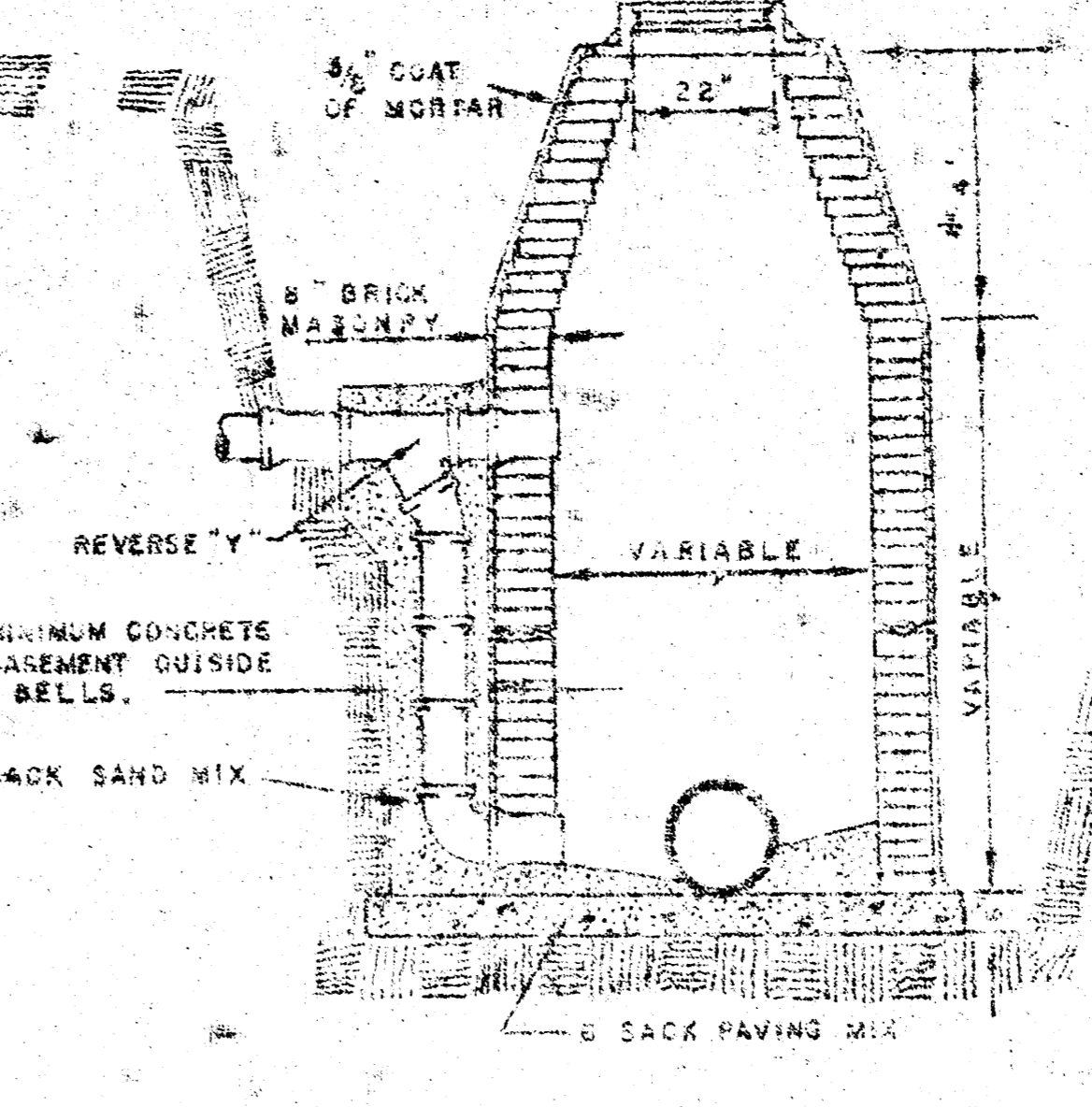
STANDARD MANHOLE TYPE "B"



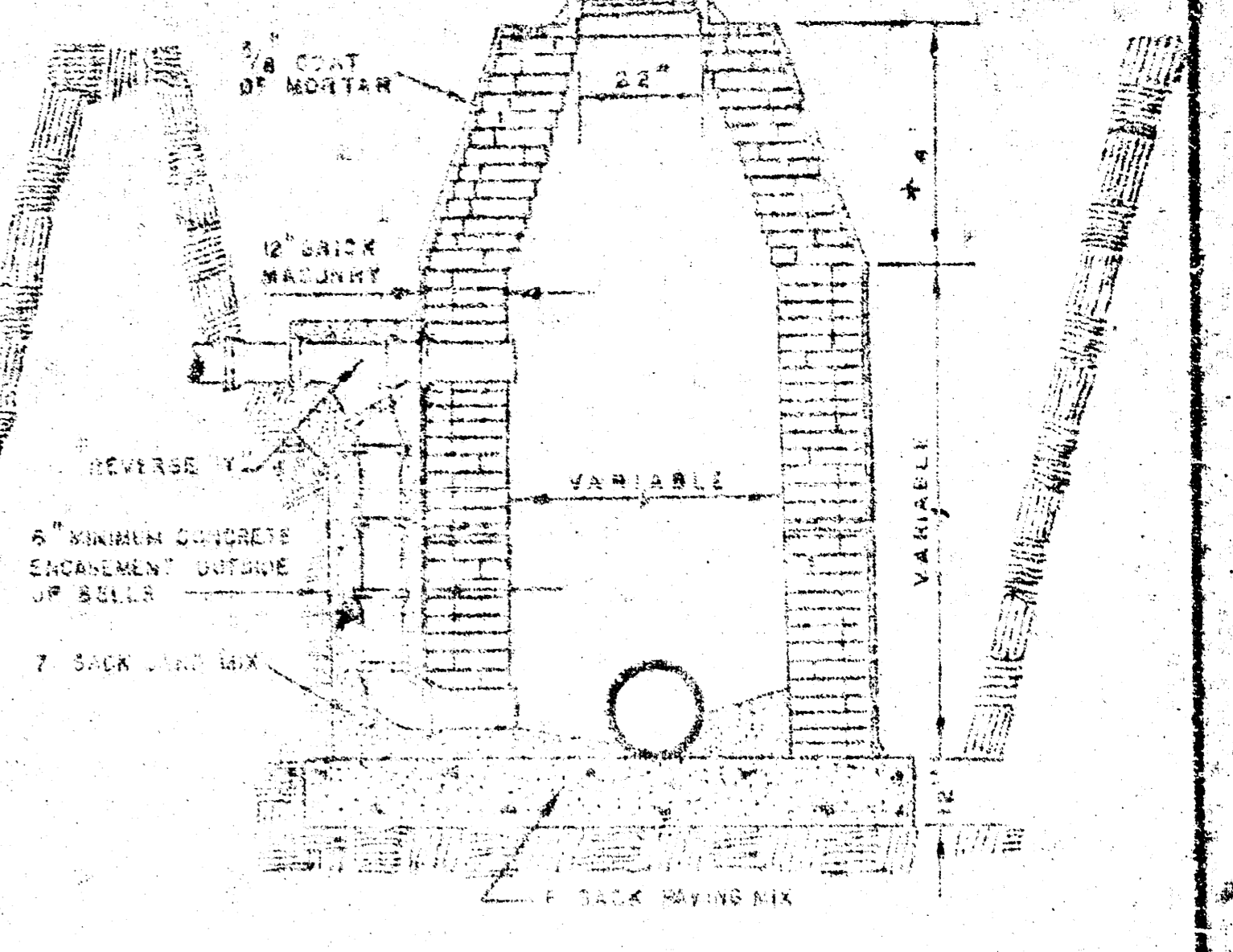
DROP MANHOLE TYPE "A"



DROP MANHOLE TYPE "B"

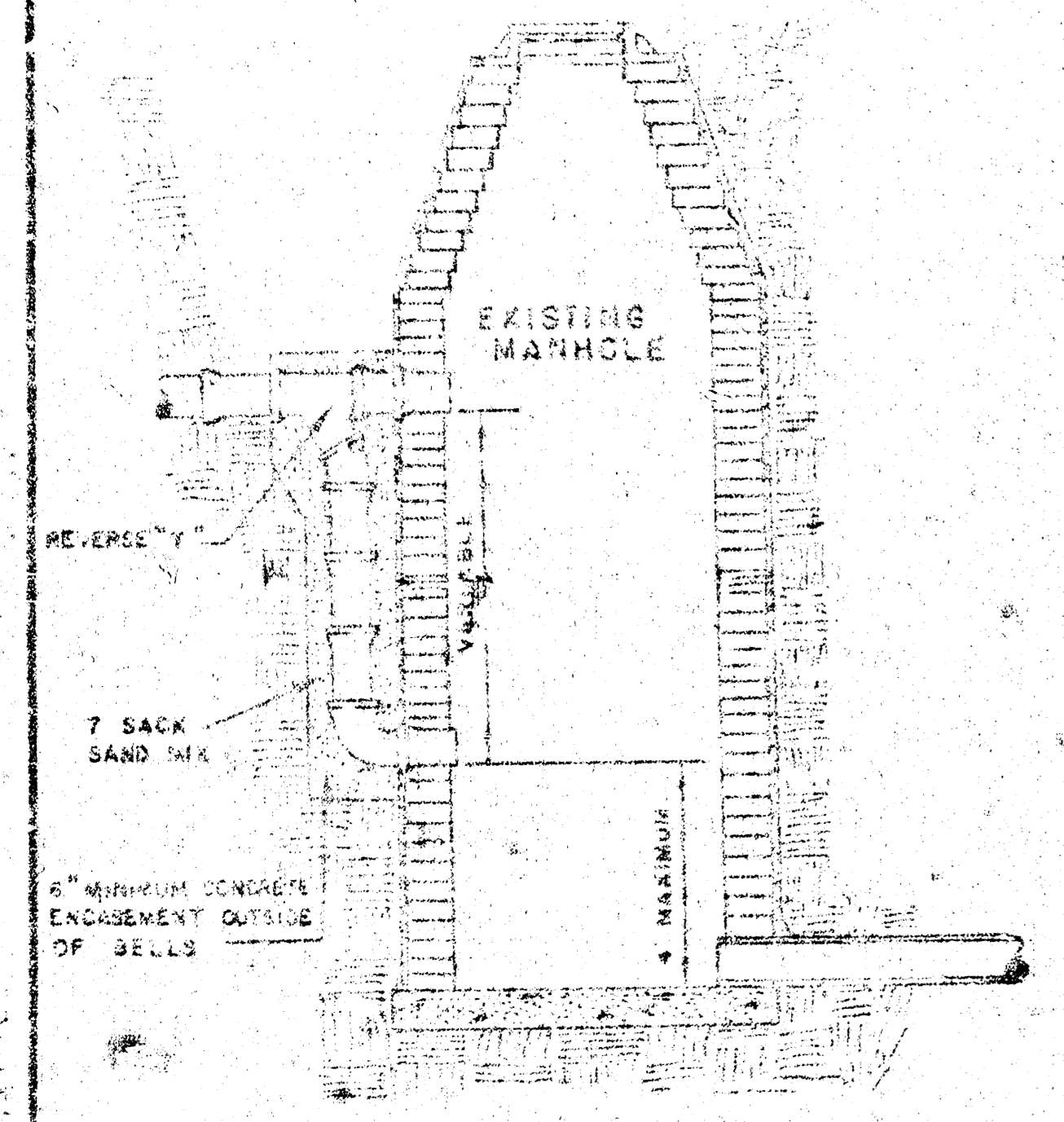


OUTSIDE DROP MANHOLE TYPE "A"

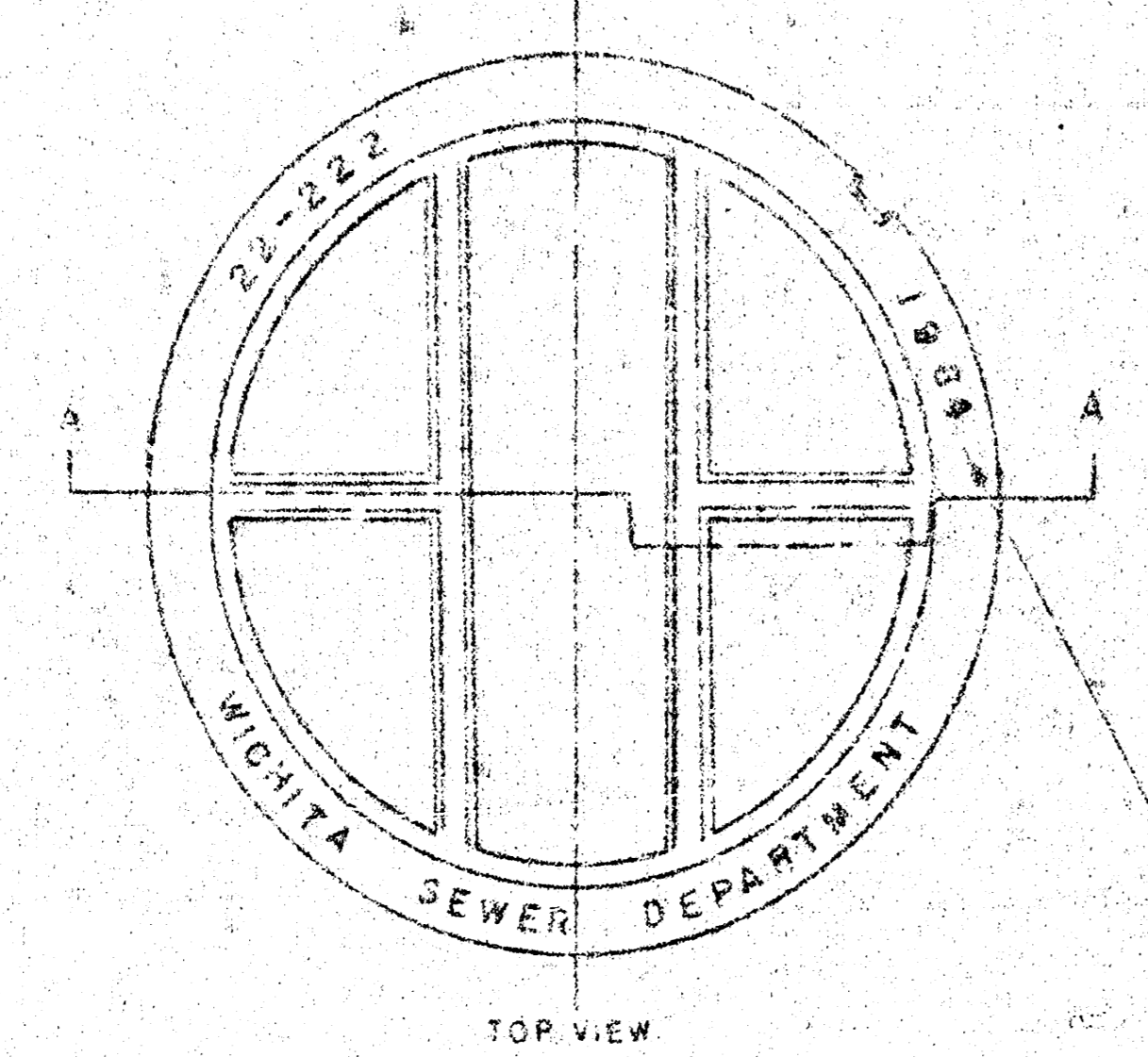


OUTSIDE DROP MANHOLE TYPE "B"

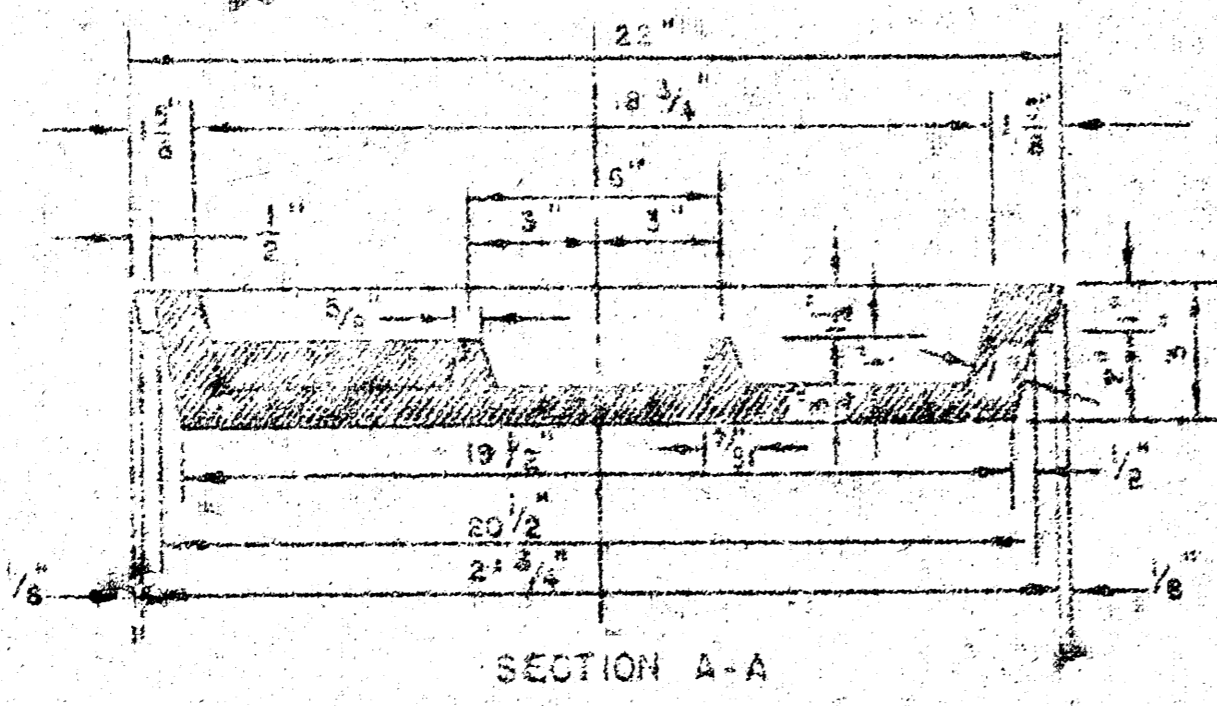
* DRAW = 6' ON 5' DIA. M.H.



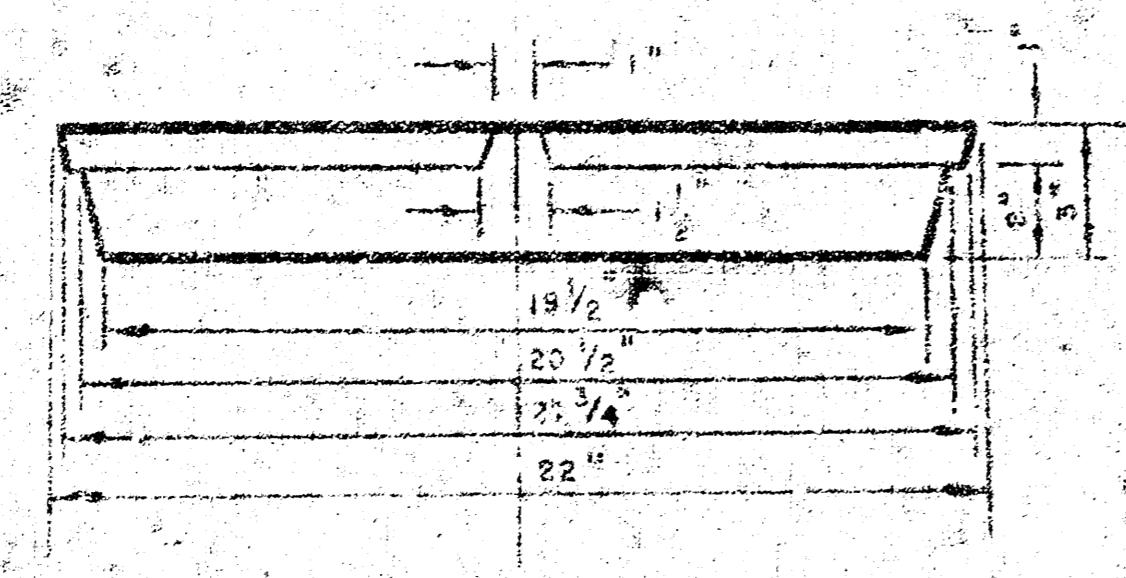
DETAIL OF DROP STACK FOR EXISTING MANHOLES IN GROUND WATER



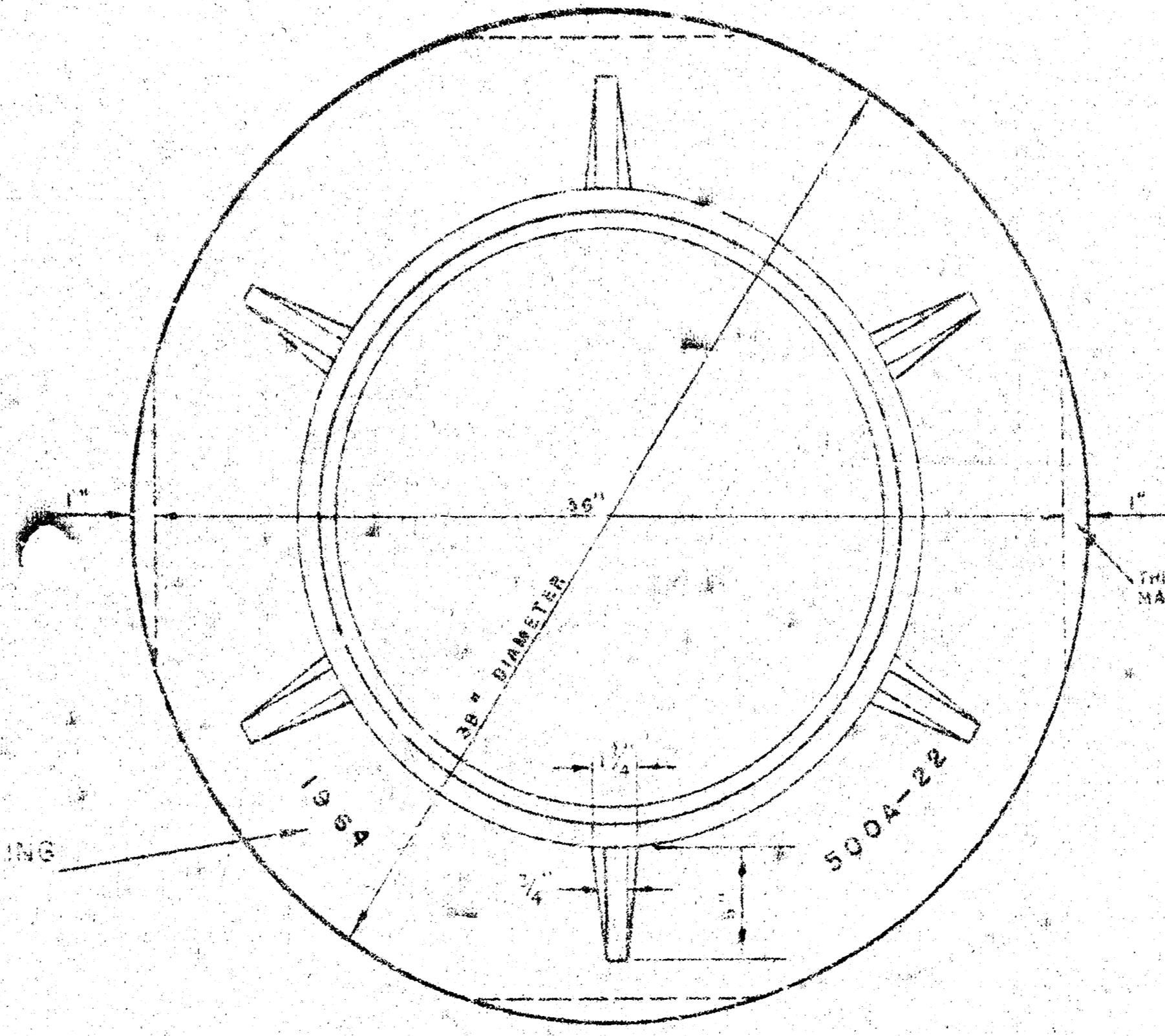
MANHOLE COVER WEIGHT 110 lbs.



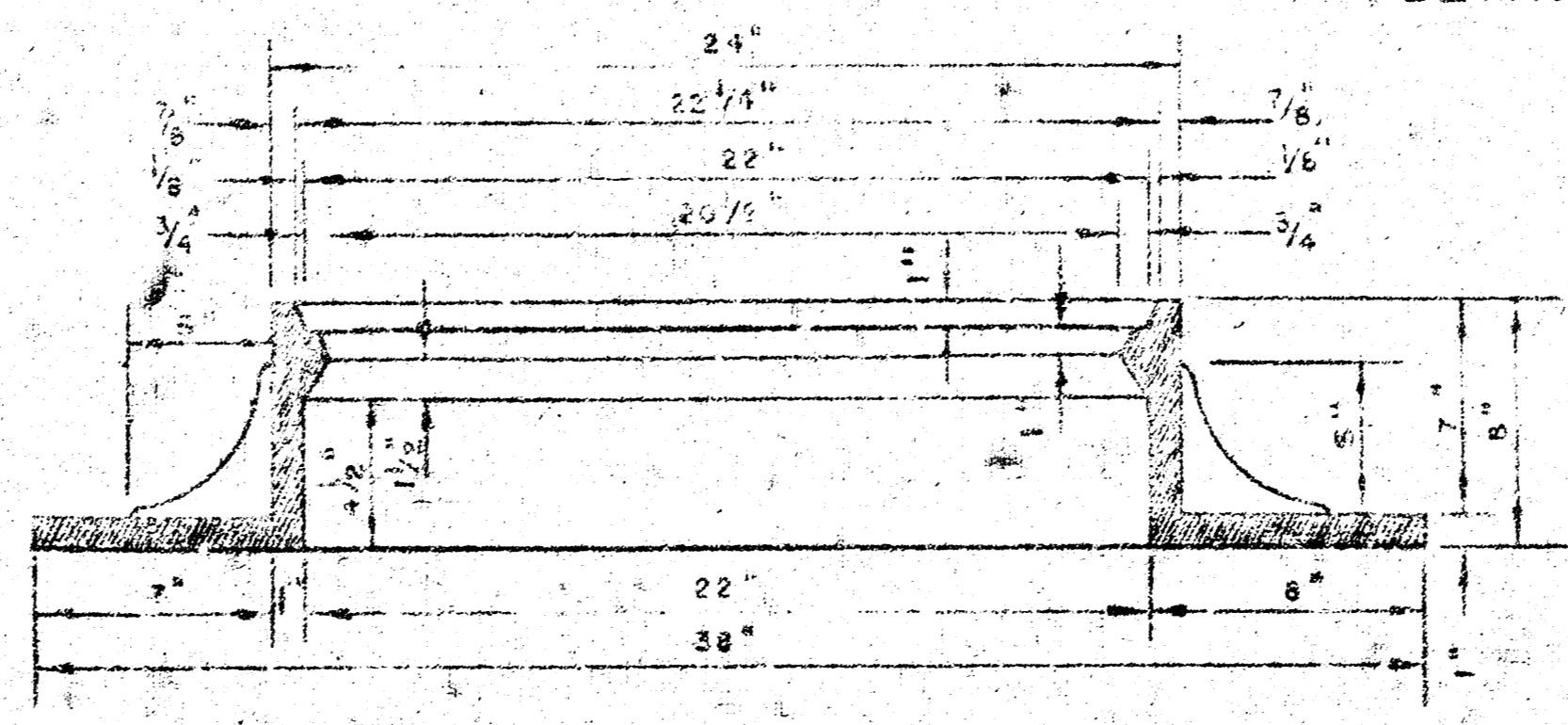
MANHOLE COVER



MANHOLE COVER

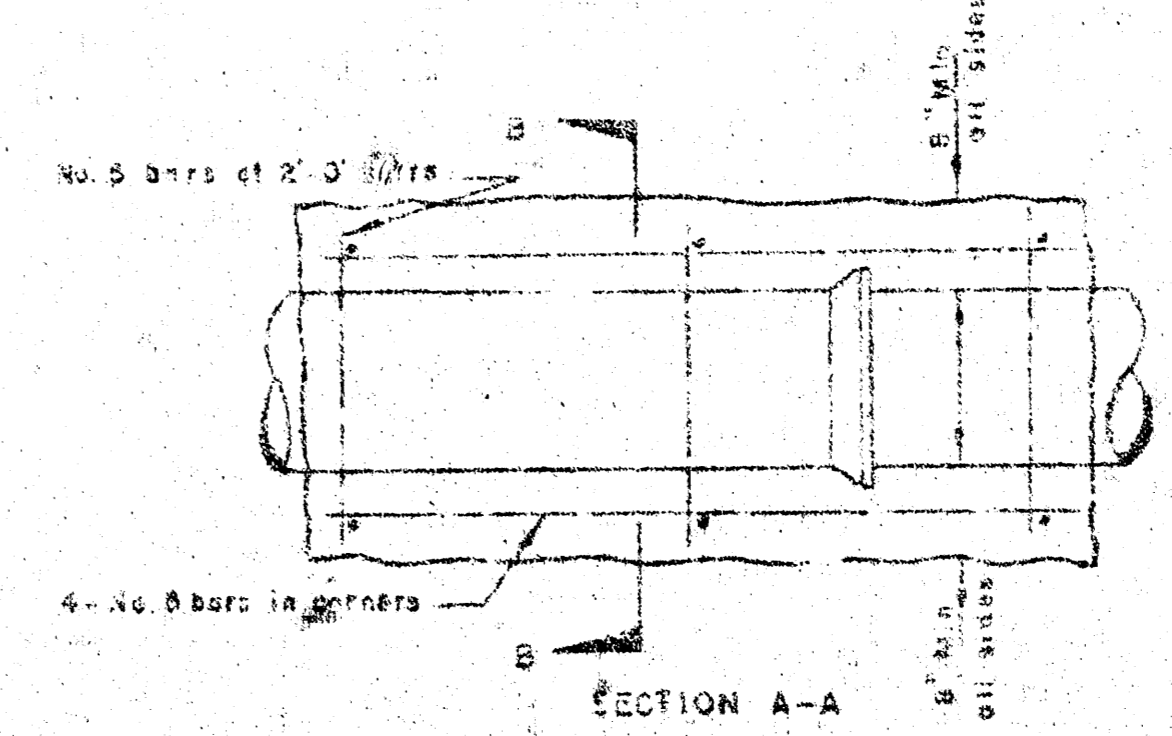


MANHOLE RING WEIGHT 355 lbs.

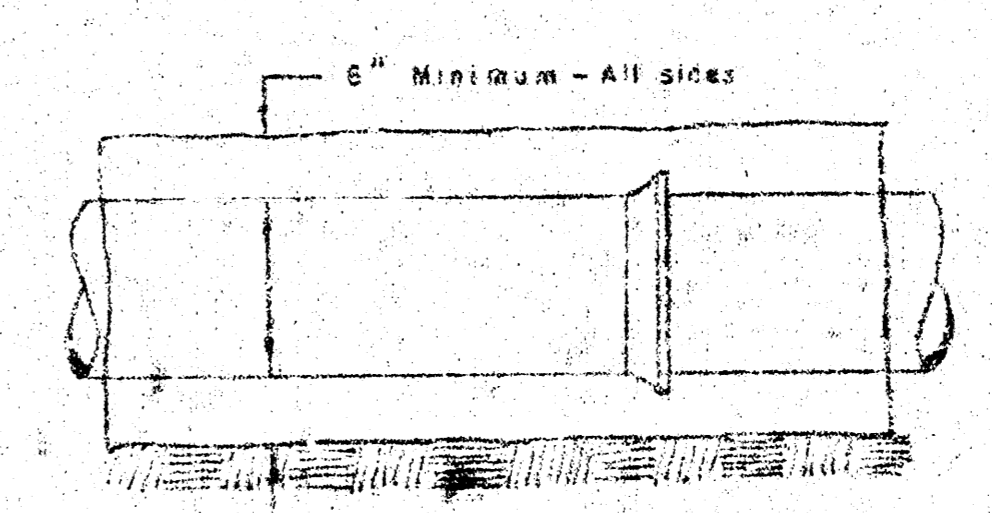
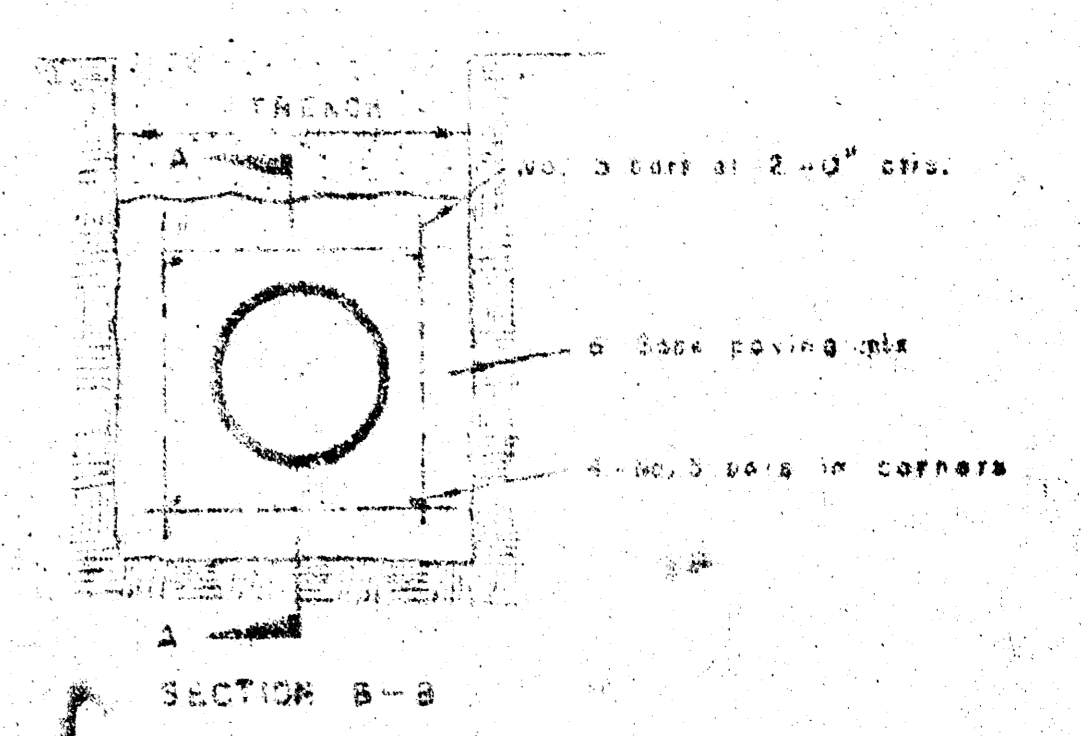


MANHOLE RING

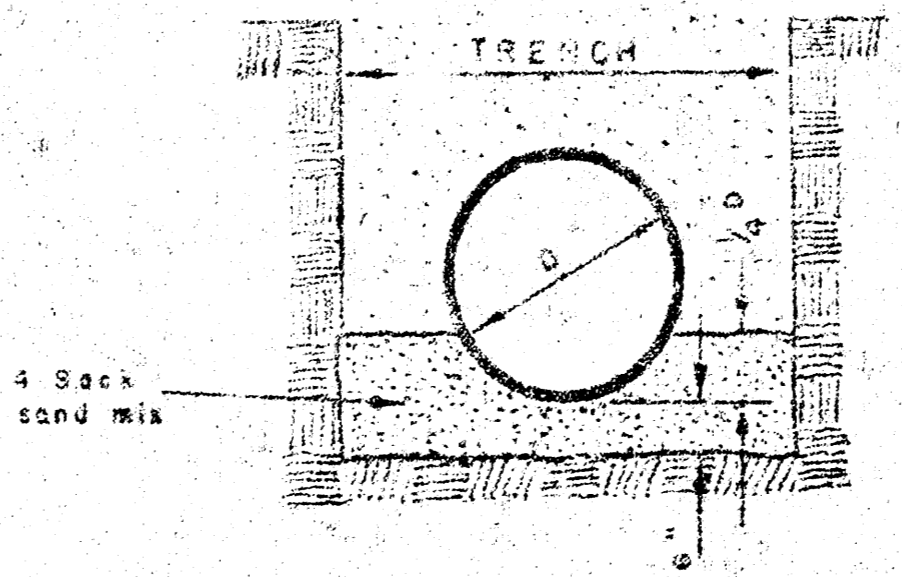
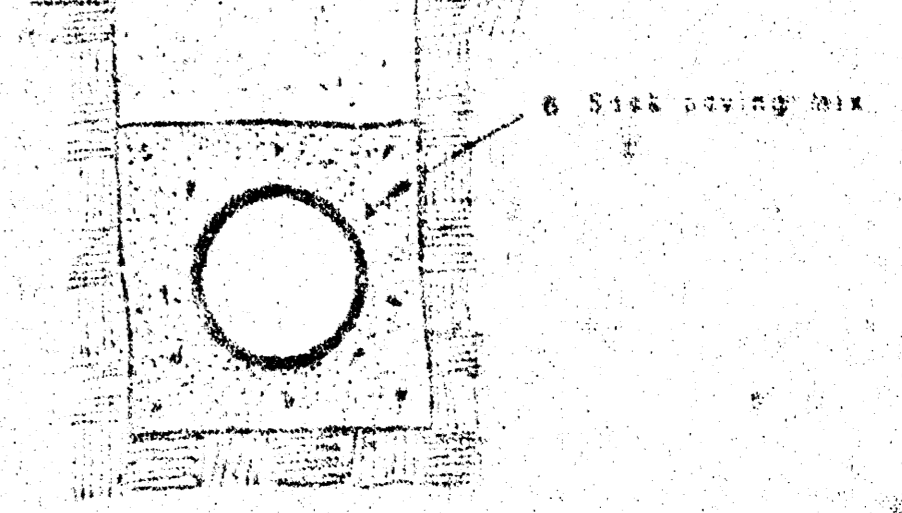
OUTSIDE CIRCUMFERENCE OF COVER AND THE INNER FACE AND SEAT OF RING TO BE MACHINE FIT.



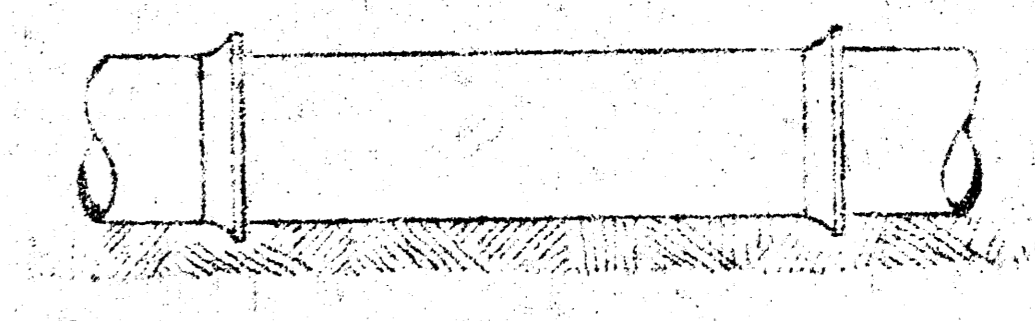
REINFORCED CONCRETE ENCASUREMENT FOR STRENGTH



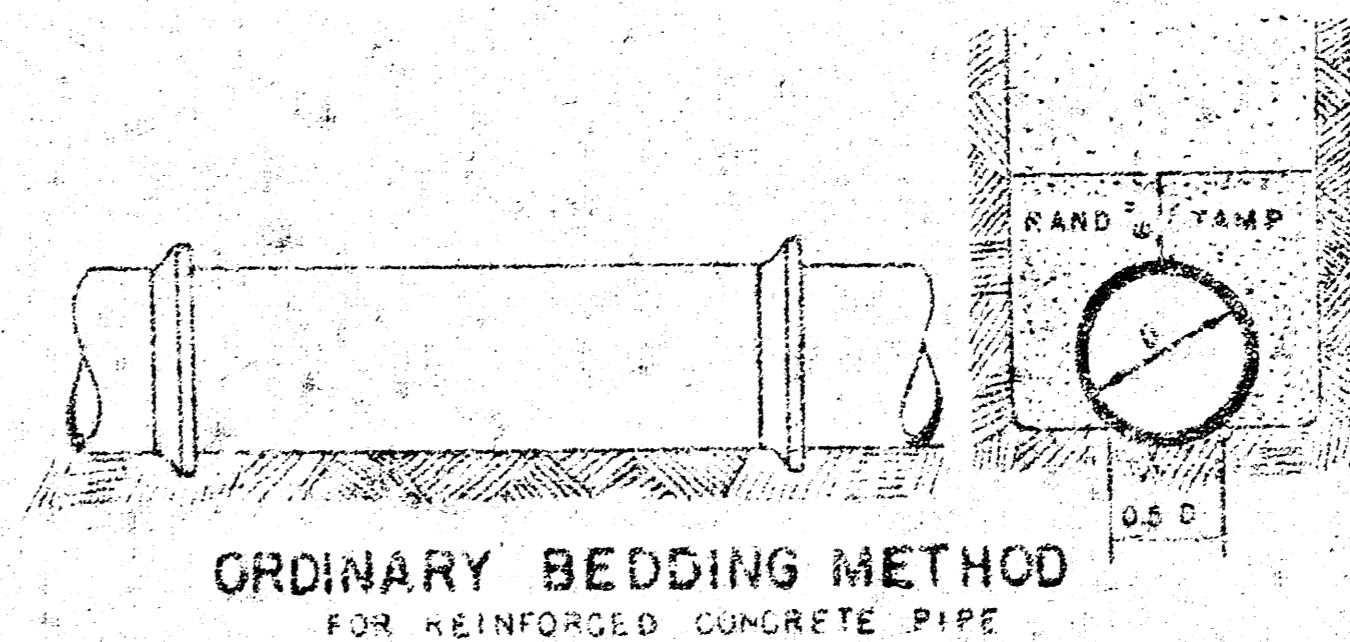
CONCRETE ENCASUREMENT FOR COVER



DETAIL OF CONCRETE CRADLE



ORDINARY BEDDING METHOD FOR CLAY PIPE

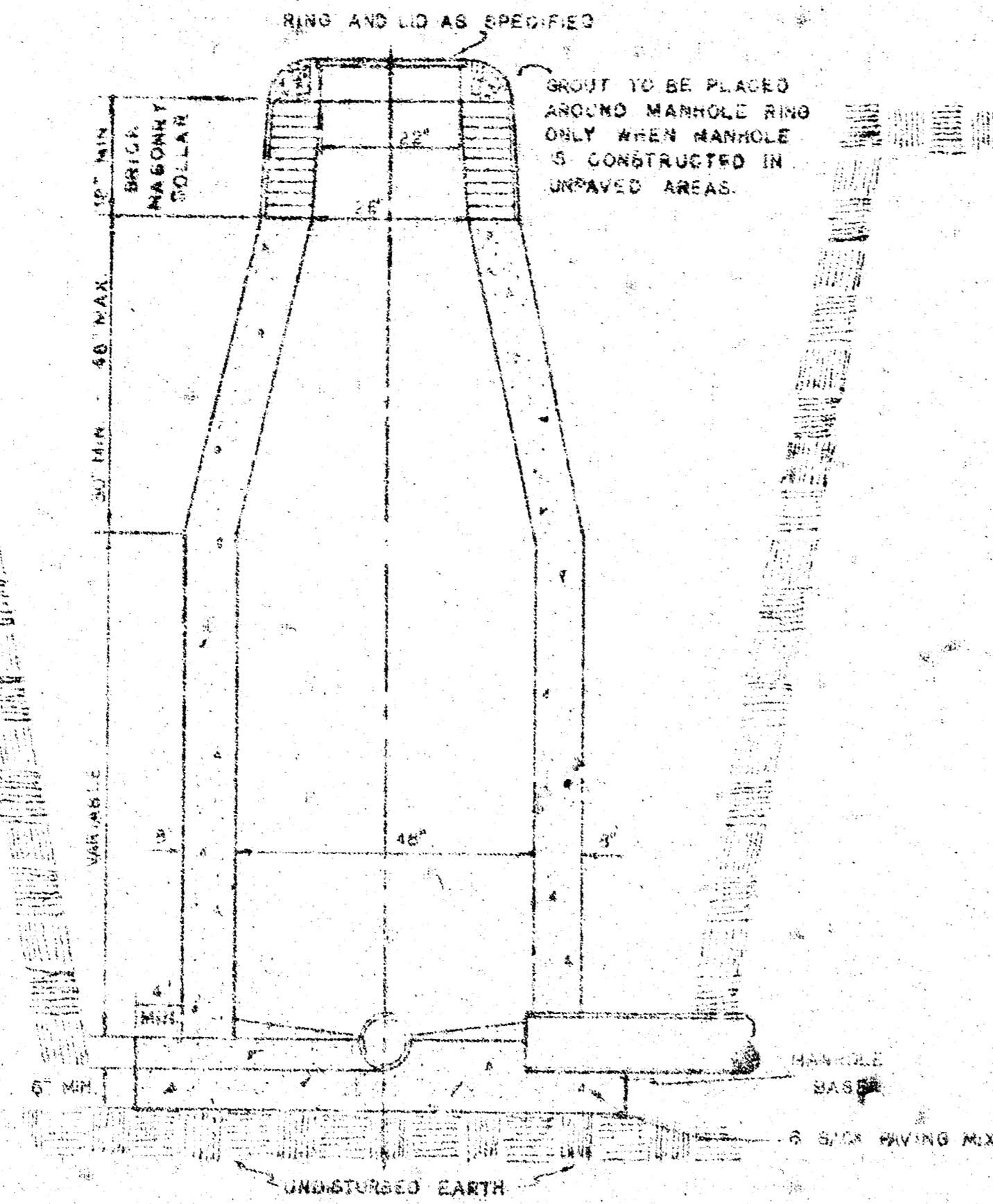


ORDINARY BEDDING METHOD FOR REINFORCED CONCRETE PIPE

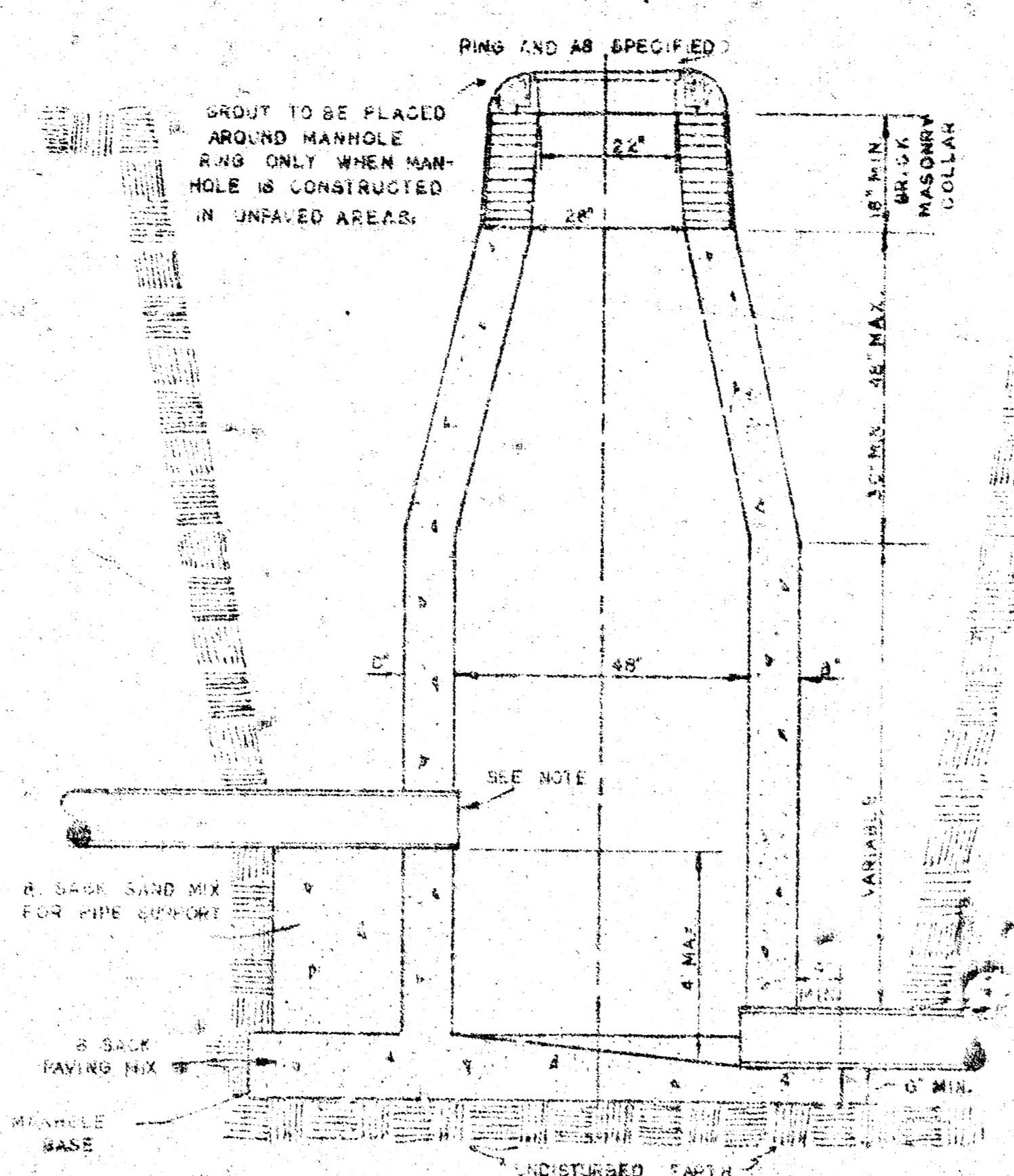
MANHOLES
 THE CONCRETE USED FOR MORTAR IN MANHOLES SHALL CONTAIN 2 SACKS OF MORTAR PER CUBIC YARD.
 STANDARD MANHOLES AND DROP MANHOLES, REGARDLESS OF DIAMETER, SHALL BE BID AT ONE PRICE AS STANDARD MANHOLES.
 SINGLE OR DOUBLE OUTSIDE DROP MANHOLES SHALL BE BID AT ONE PRICE AS OUTSIDE DROP MANHOLES.
 ALL MANHOLES WITH PIPES LARGER THAN 24" SHALL BE 8" DIAMETER UNLESS OTHERWISE SPECIFIED ON PLAN. ALL M.H.'S WITH PIPES 24" & SMALLER SHALL BE 4' DIA.

DETAILS OF SEWER APPURTENANCES ADOPTED AS STANDARD DESIGN BY ENGINEERING DIVISION CITY OF WICHITA, KANSAS R. W. LINN CITY ENG'ER 1964

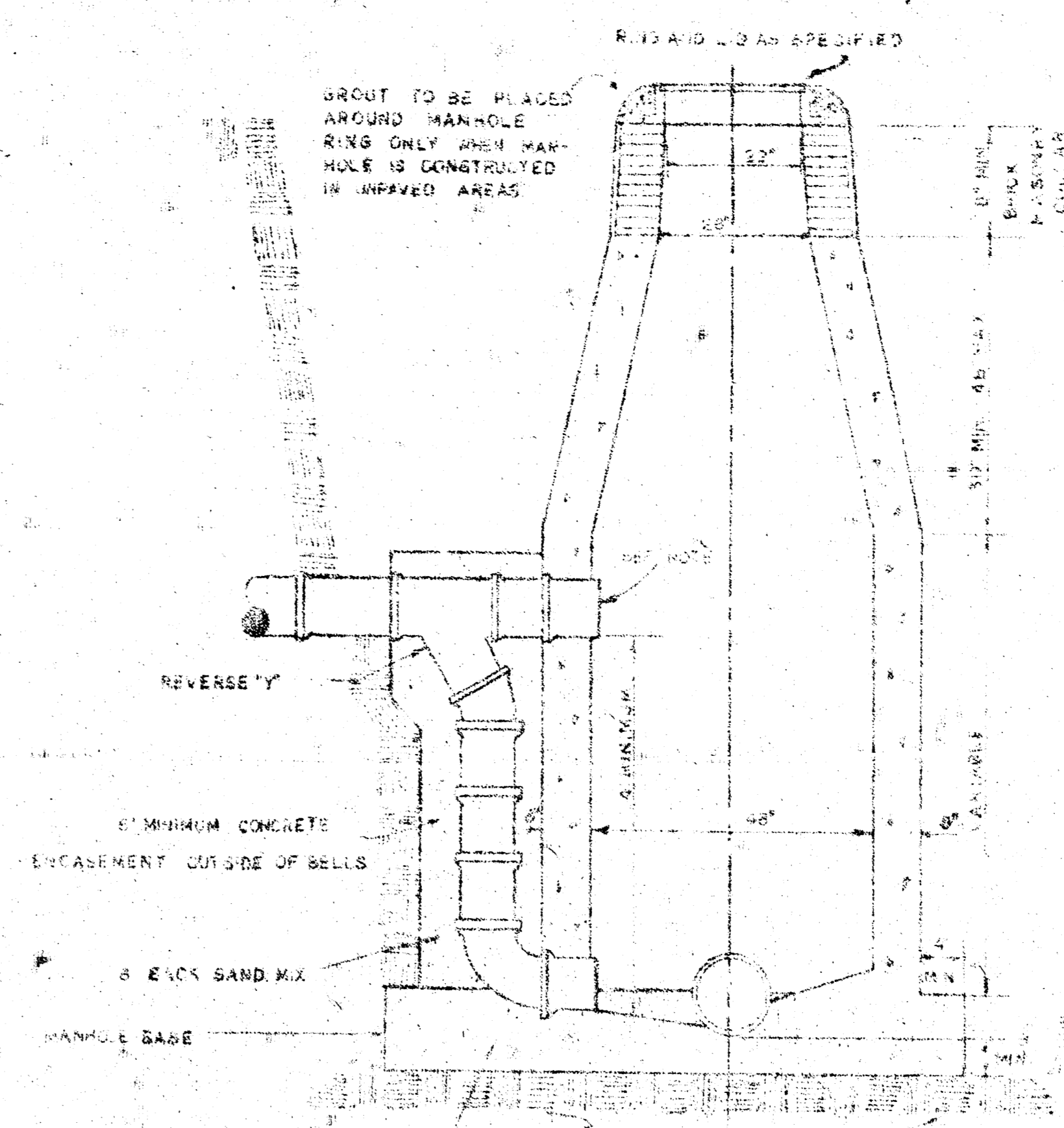
STANDARD MANHOLE, TYPE "C"



DROP MANHOLE, TYPE "C"



OUTSIDE DROP MANHOLE, TYPE "C"



GENERAL NOTES

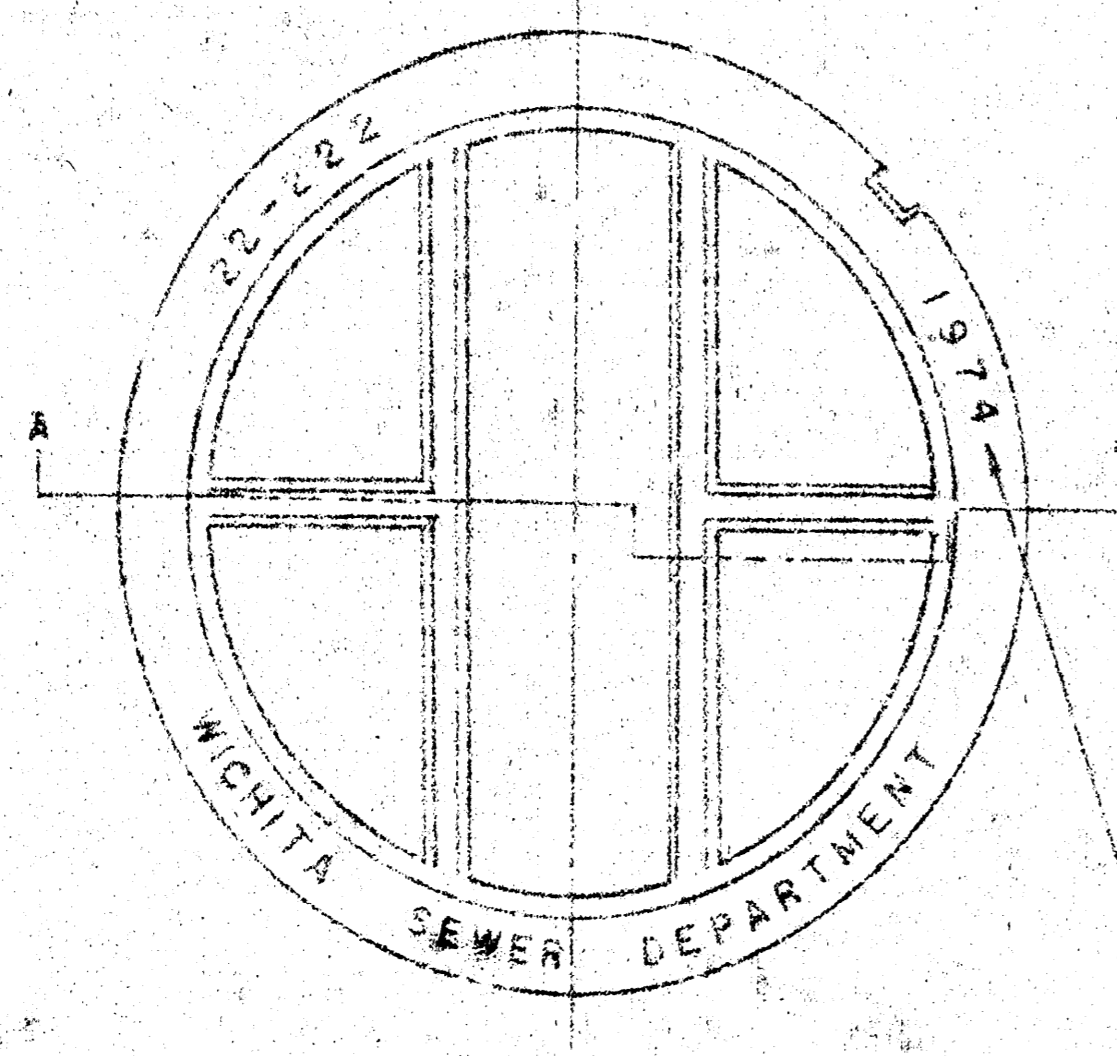
MORTAR USED IN MASONRY CONSTRUCTION SHALL CONTAIN 3 SACKS OF CEMENT PER CUBIC YARD.

STANDARD MANHOLES TYPE "C" AND STANDARD DROP MANHOLES TYPE "C" SHALL BE BID AS STANDARD MANHOLES FOR THE TYPE AND DIAMETER INDICATED.

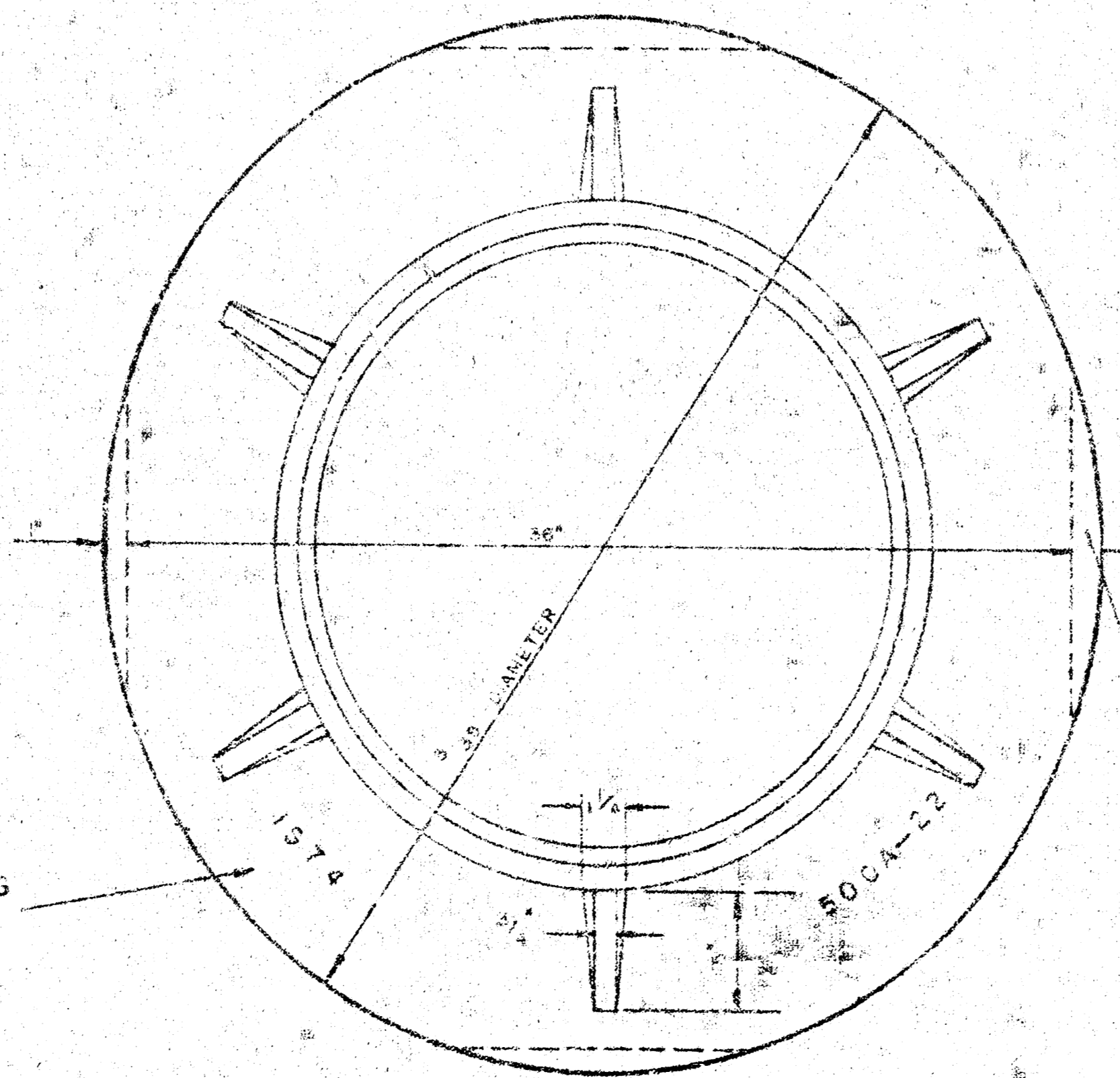
OUTSIDE DROP MANHOLES TYPE "C" SHALL BE BID AS STANDARD OUTSIDE DROP MANHOLES FOR THE TYPE AND DIAMETER INDICATED. ALL MANHOLE DIAMETERS WILL BE 4 FT. UNLESS INDICATED OTHERWISE. MANHOLES WITH PIPE SIZES LARGER THAN 24" SHALL BE 6 FT. DIAMETER.

THE FLOORS OF ALL MANHOLES SHALL BE SHAPED TO INCREASE HYDRAULIC EFFICIENCY USING 3 SACK SAND MIX CONCRETE.

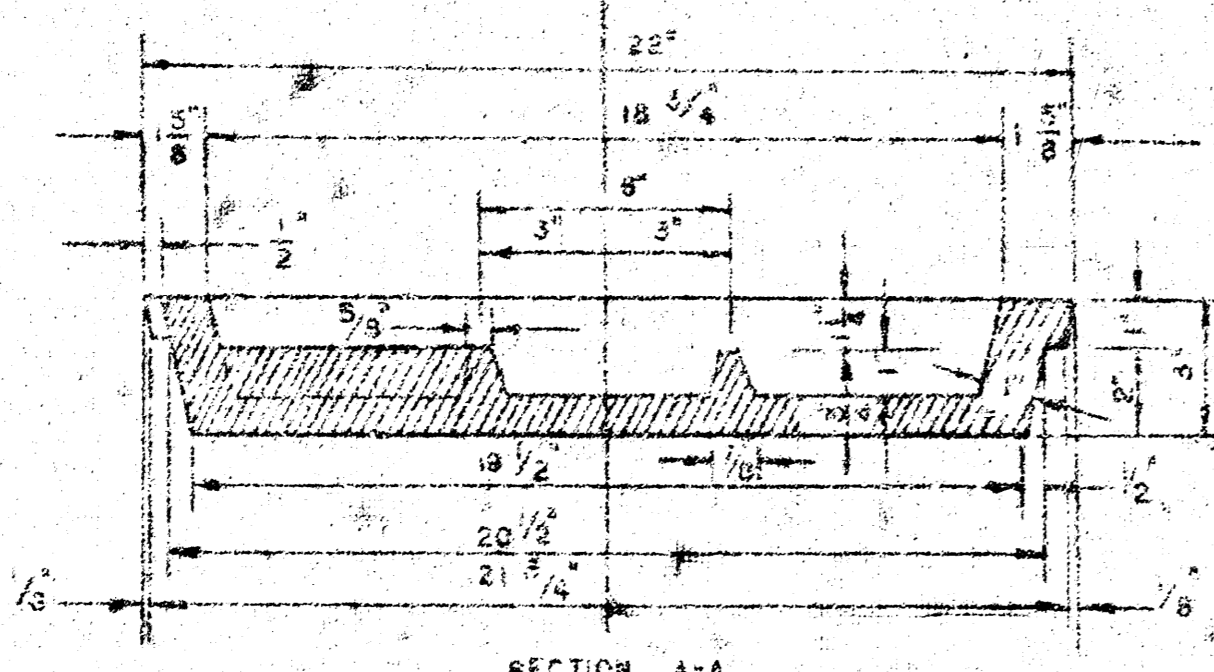
CAST IN PLACE CIRCULAR CONCRETE MANHOLES ARE TO BE CONSTRUCTED ONLY ON SEWERS NOT SUBJECT TO DETERIORATION OF CONCRETE DUE TO FORMATION OF HYDROGEN SULFIDE GAS AND IN LOCATIONS WHERE IT IS OBVIOUS THAT ANY ADJUSTMENT OF THE MANHOLE TOP ELEVATION WHICH MAY BE NECESSARY WILL NOT REQUIRE MODIFICATION OF THE CONCRETE BARRREL.



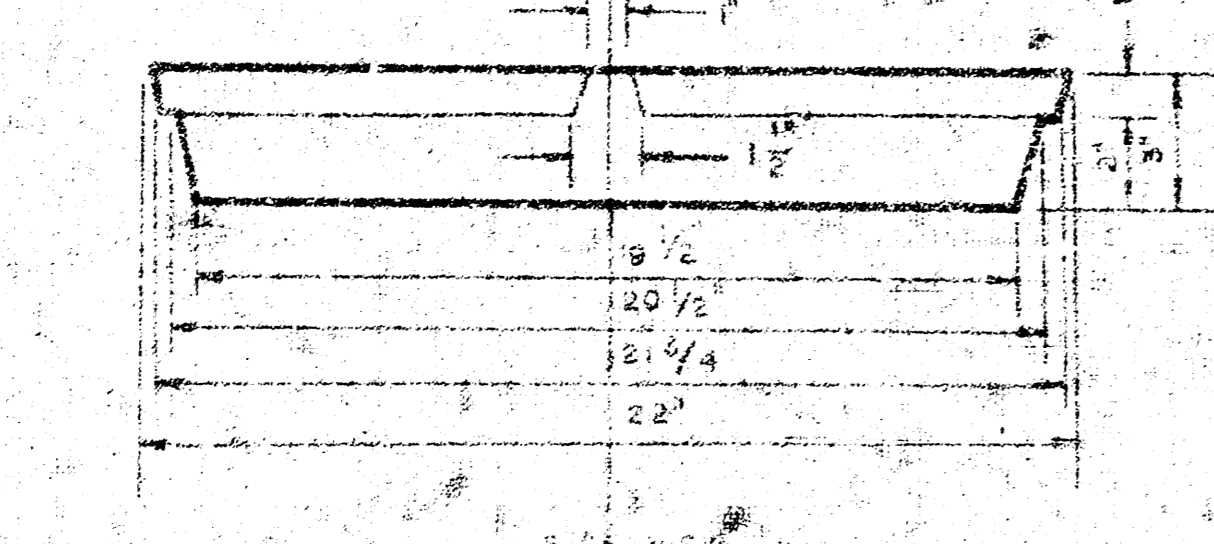
MANHOLE COVER
WEIGHT 110 LBS.



MANHOLE RING
WEIGHT 325 LBS. RING NO. 500A
WEIGHT 800 LBS. RING NO. 500AS



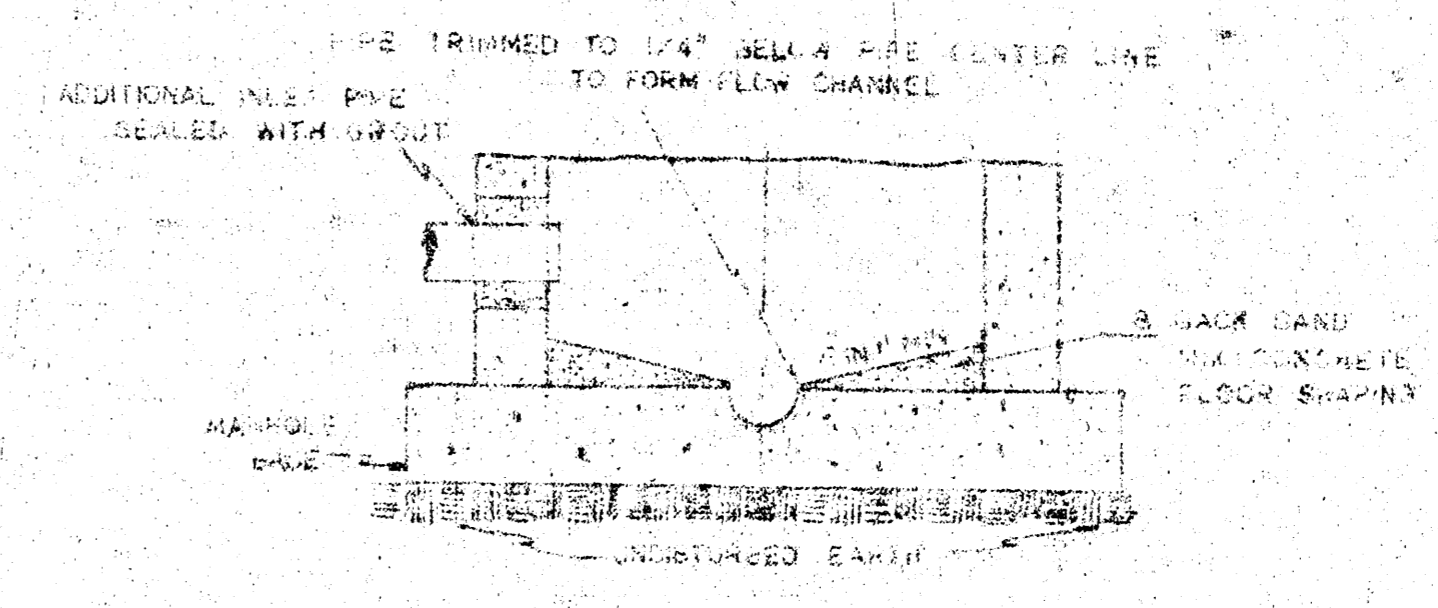
MANHOLE COVER



MANHOLE COVER

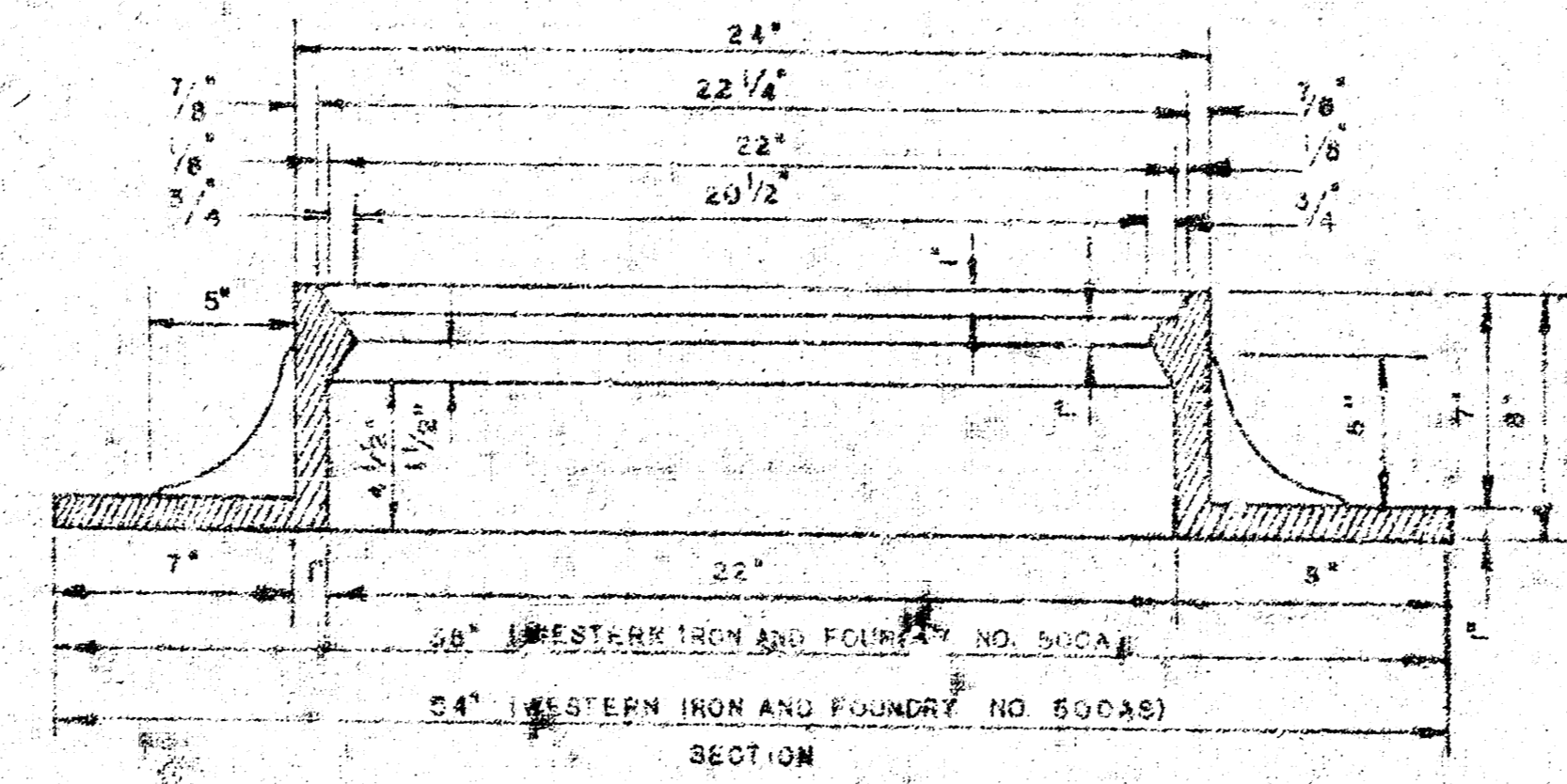
YEAR CASTING IS MADE

OUTSIDE CIRCUMFERENCE OF COVER AND THE INNER FLANGE AND SEAT OF RING TO BE MACHINE FIT



SECTIONAL ELEVATION—INVERT

NOTE: OPENING FOR INLET PIPE CUT IN MANHOLE WALL AND PIPE GROUTED IN PLACE WITH NON-SHRINKING GROUT. EXTERIOR OF COMPLETED CONNECTION TO BE SEALED WITH APPROVED COATING.



MANHOLE RING

DETAILS OF SEWER APPURTENANCES
ADOPTED AS STANDARD DESIGN
BY
ENGINEERING DIVISION
CITY OF WICHITA, KANSAS
R. W. LINN CITY ENGINEER
1974