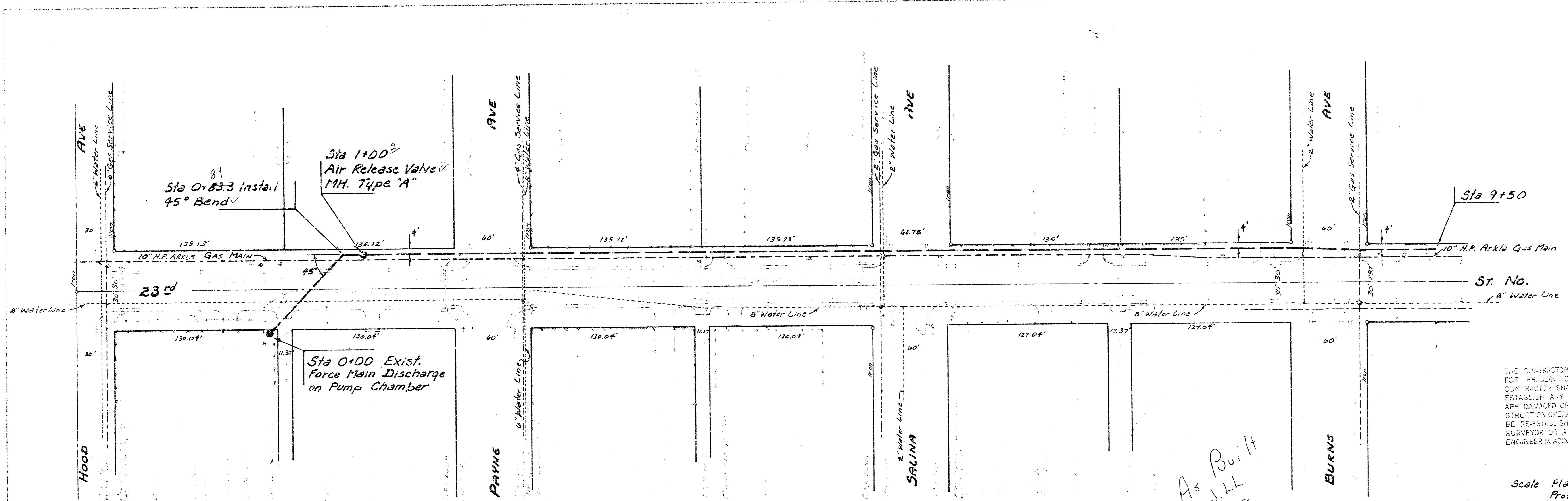


PLAN
 11/20/82
 WSR/CS



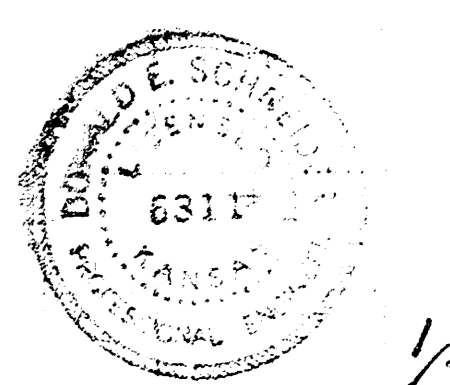
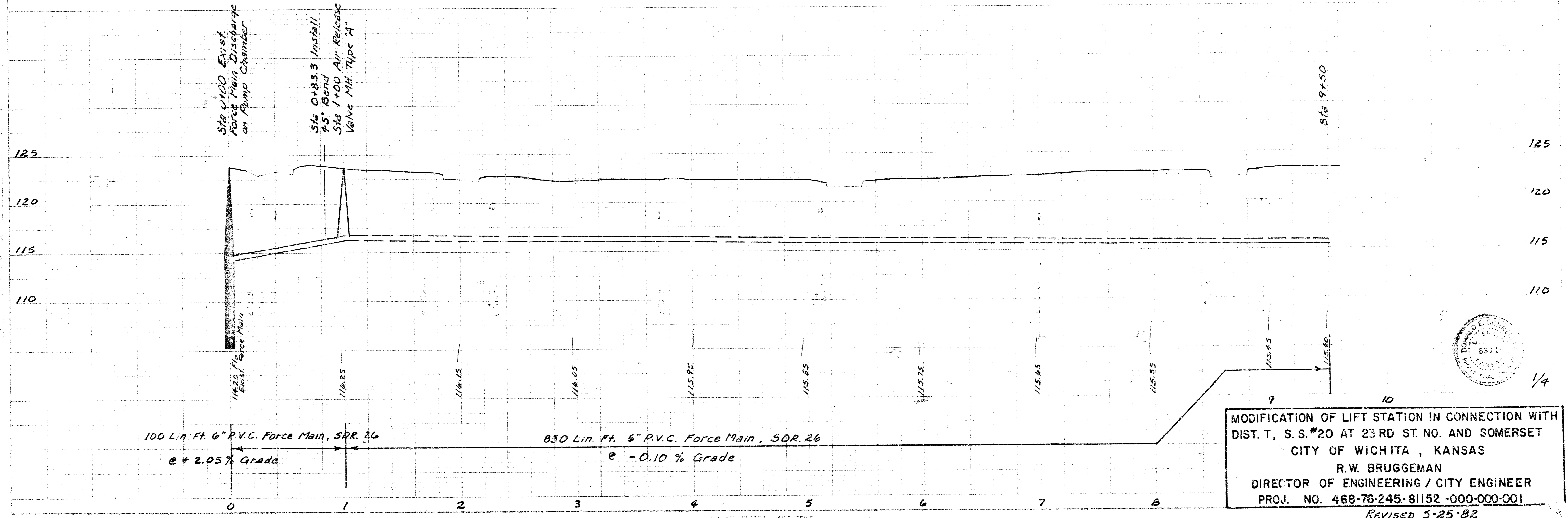
THE CONTRACTOR SHALL BE RESPONSIBLE FOR PRESERVING PROPERTY LINES. THE CONTRACTOR SHALL BE RESPONSIBLE TO RE-ESTABLISH ANY PROPERTY LINES WHICH ARE DAMAGED OR DESTROYED BY HIS CONSTRUCTION OPERATIONS. SUCH LINES TO BE RE-ESTABLISHED BY A LICENSED LAND SURVEYOR OR A LICENSED PROFESSIONAL ENGINEER IN ACCORDANCE WITH STATE LAW.

Scale Plan 1" = 40'
 Profile 1" = 40' Horiz.
 1" = 5' Vert.

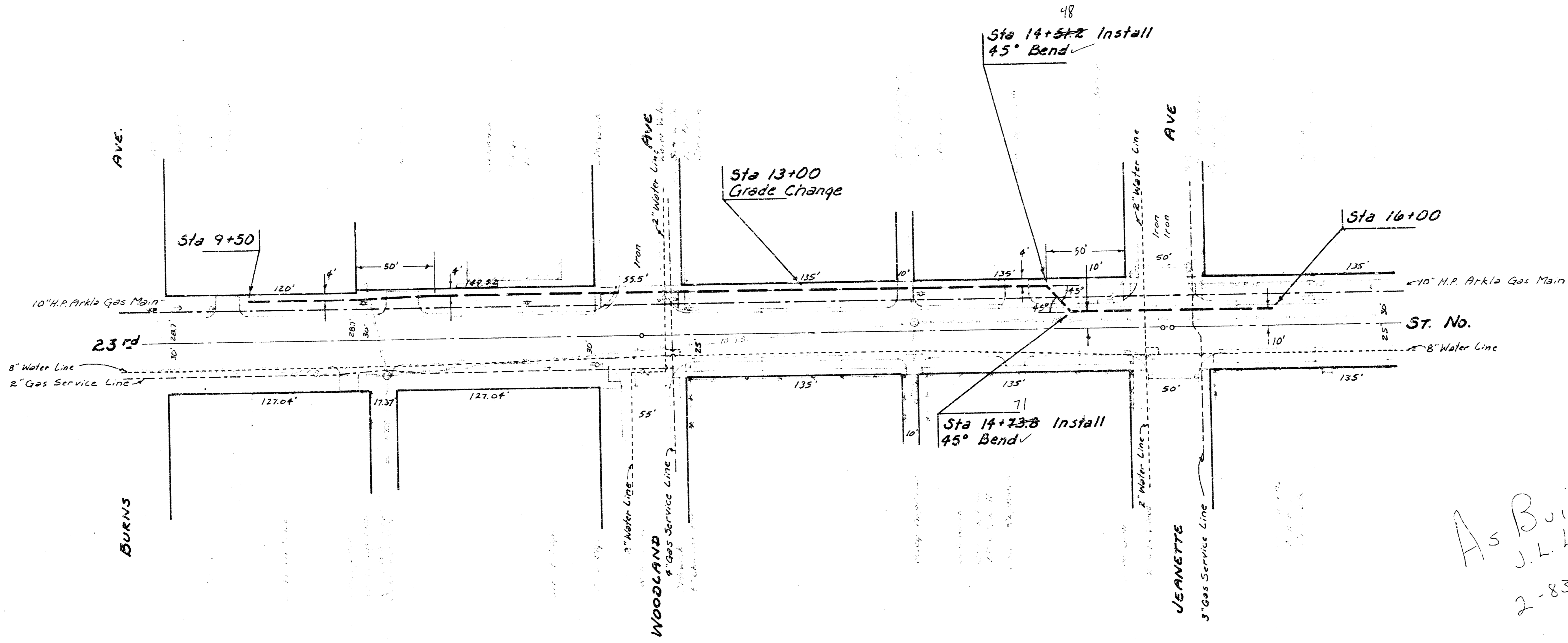
B.M. 125.77 NE. Cor. Concrete Porch # 2561 Salina
 B.M. 124.09 NE. Cor. Concrete Porch # 2401 Salina
 B.M. 125.94 SW. Cor. Concrete Porch # 2404 N. Mascot
 B.M. 125.61 SE. Cor. Concrete Porch # 2401 N. Hood

As Built
 J.H.
 2-83

PROFILE

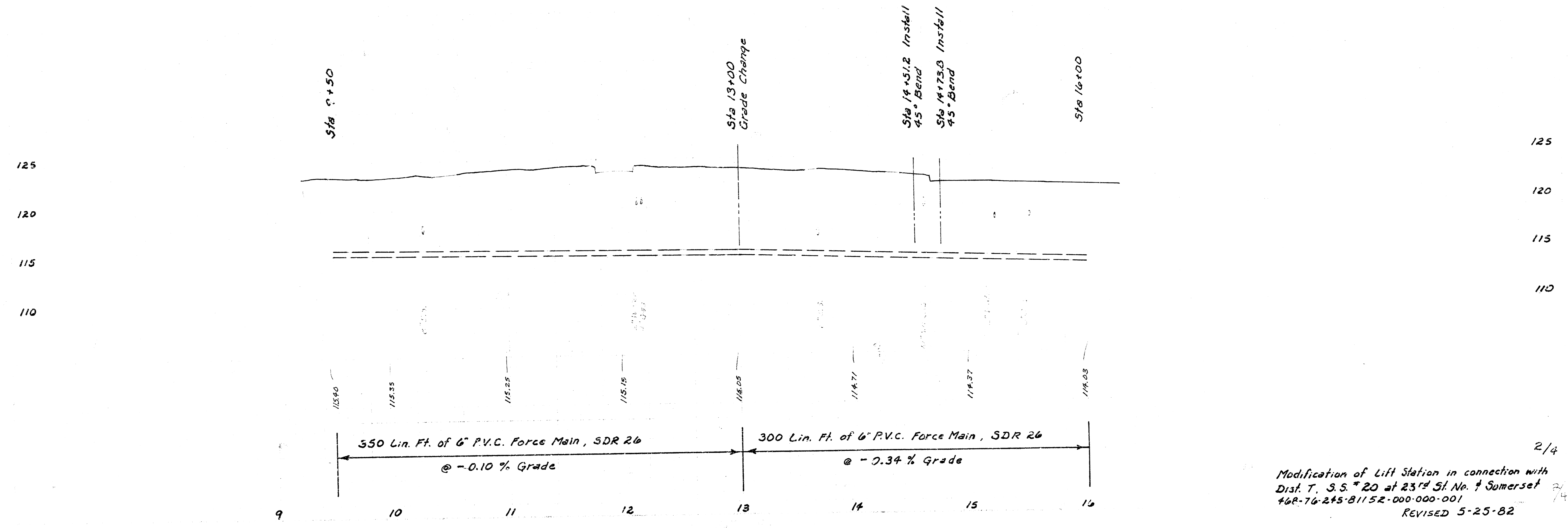


MODIFICATION OF LIFT STATION IN CONNECTION WITH
 DIST. T, S.S.#20 AT 23RD ST. NO. AND SOMERSET
 CITY OF WICHITA, KANSAS
 R.W. BRUGGEMAN
 DIRECTOR OF ENGINEERING / CITY ENGINEER
 PROJ. NO. 468-76-245-81152-000-000-001
 REVISED 5-25-82



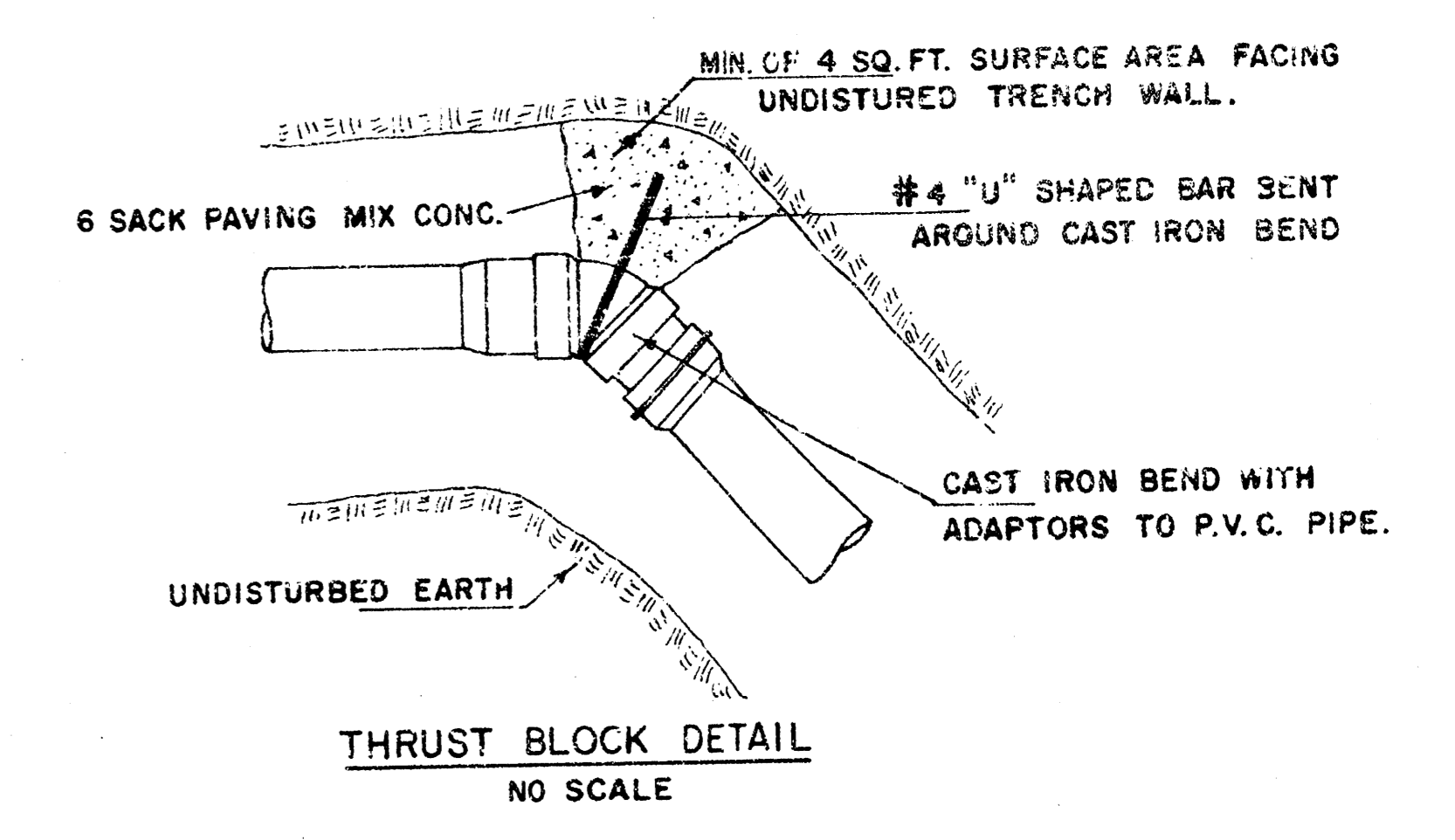
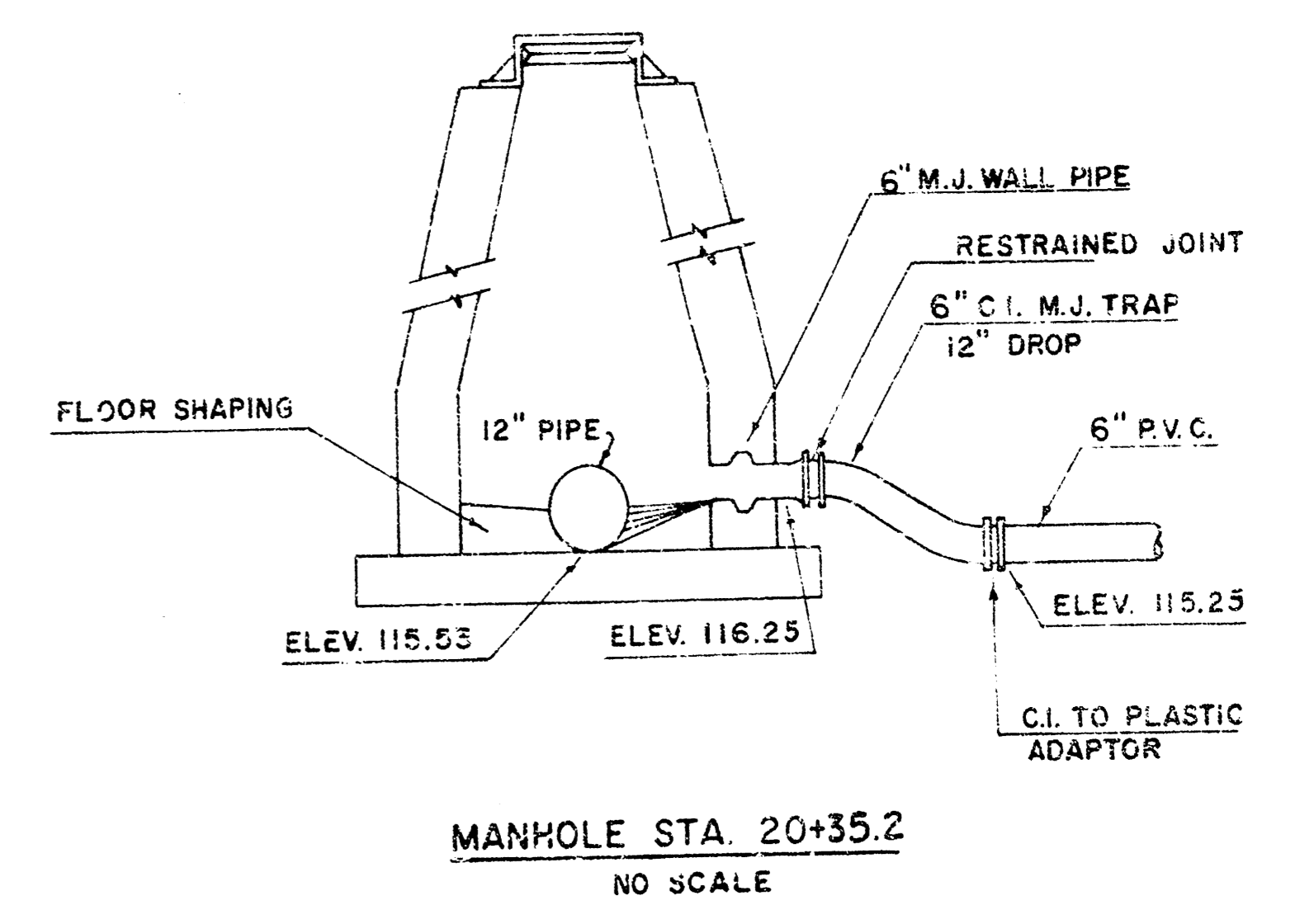
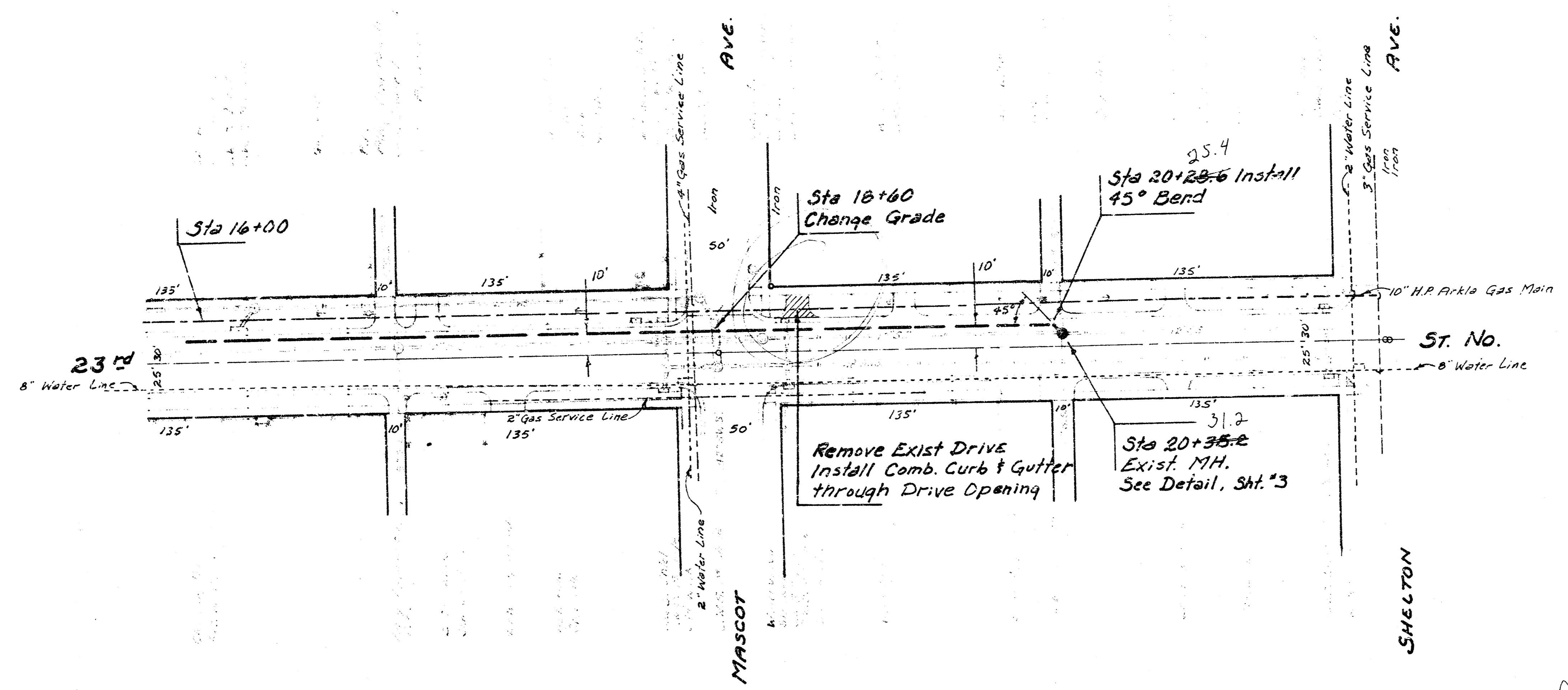
Scale Plan 1" = 40'
 Profile 1" = 40' Horiz.
 1" = 5' Vert.

As Built
 J.L.L.
 2-83

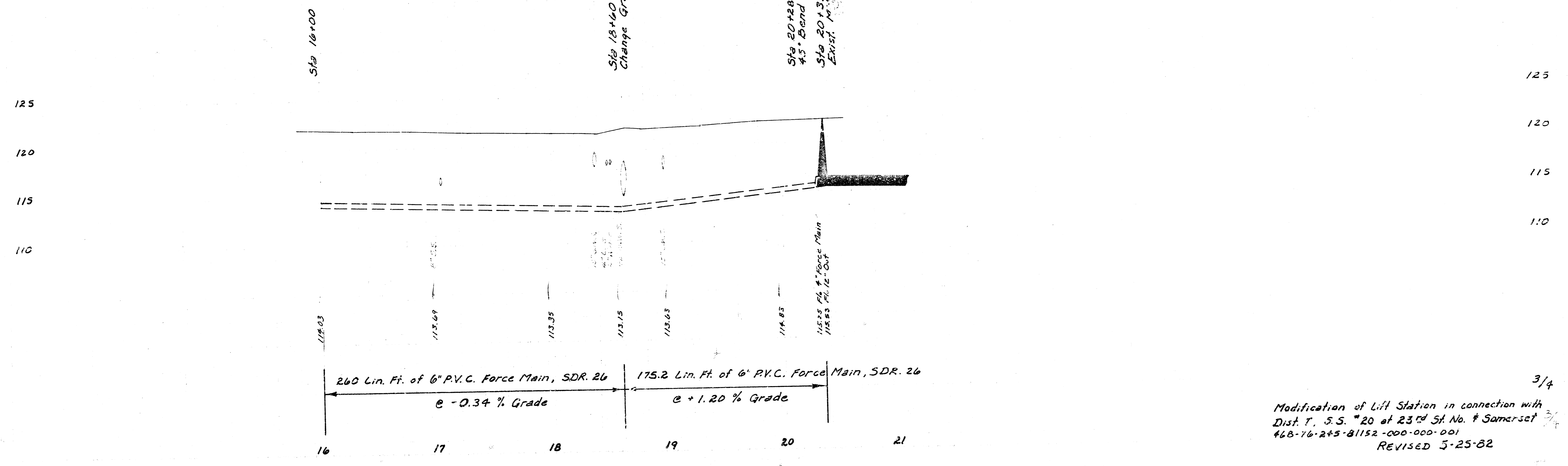


2/4
 Modification of Lift Station in connection with
 Dist. T, S.S. # 20 at 23rd St. No. 4 Somerset
 46R-76-245-81152-000-000-001
 REVISED 5-25-82

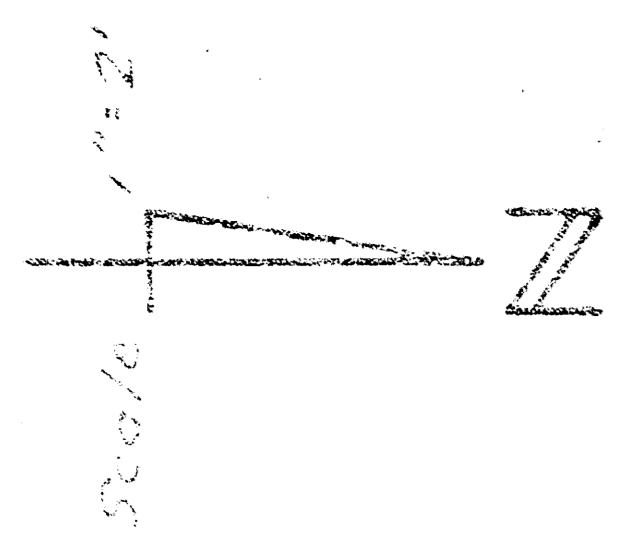
Scale Plan 1" = 40'
 Profile 1" = 40' Horz.
 1" = 5' Vert.



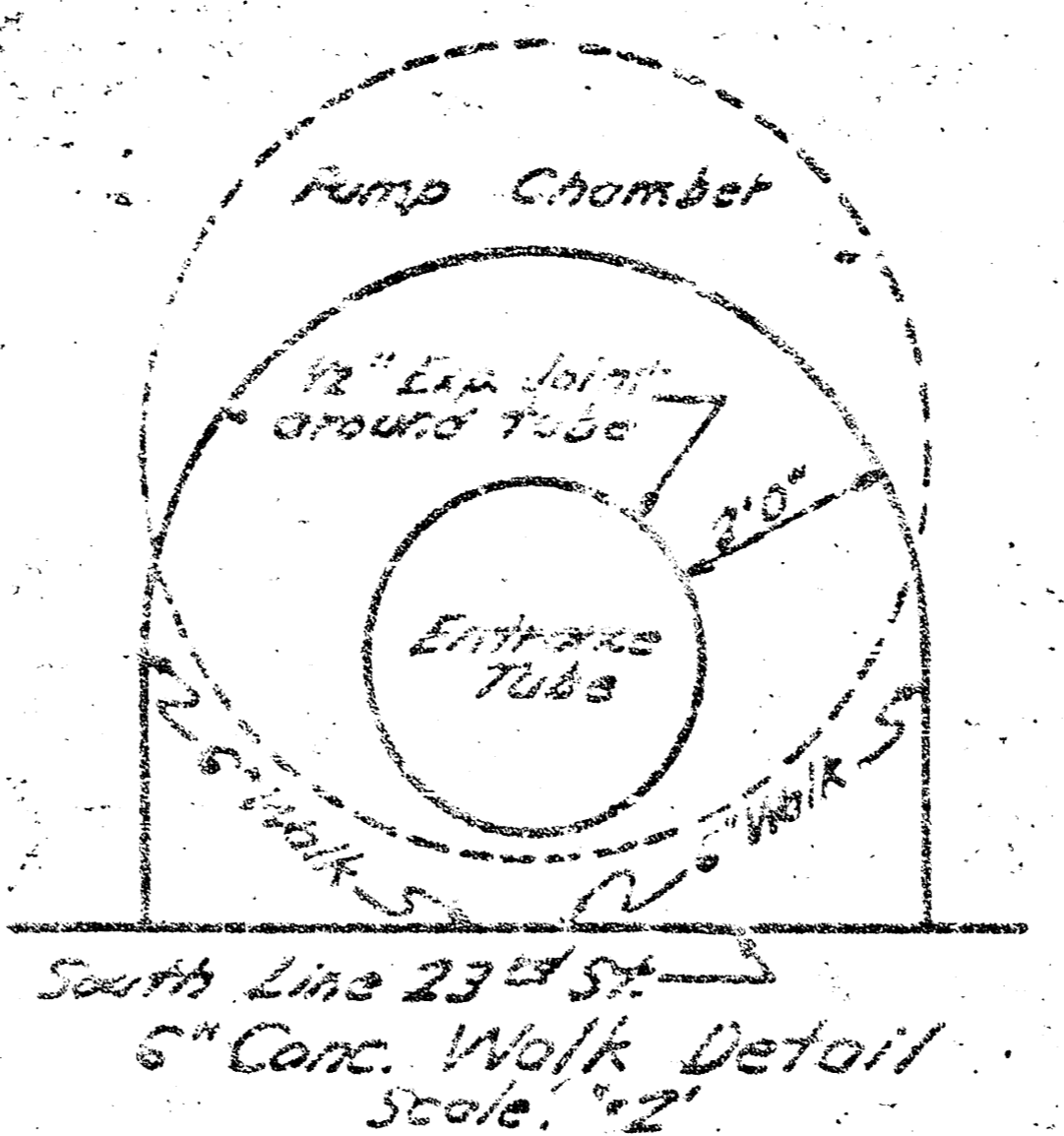
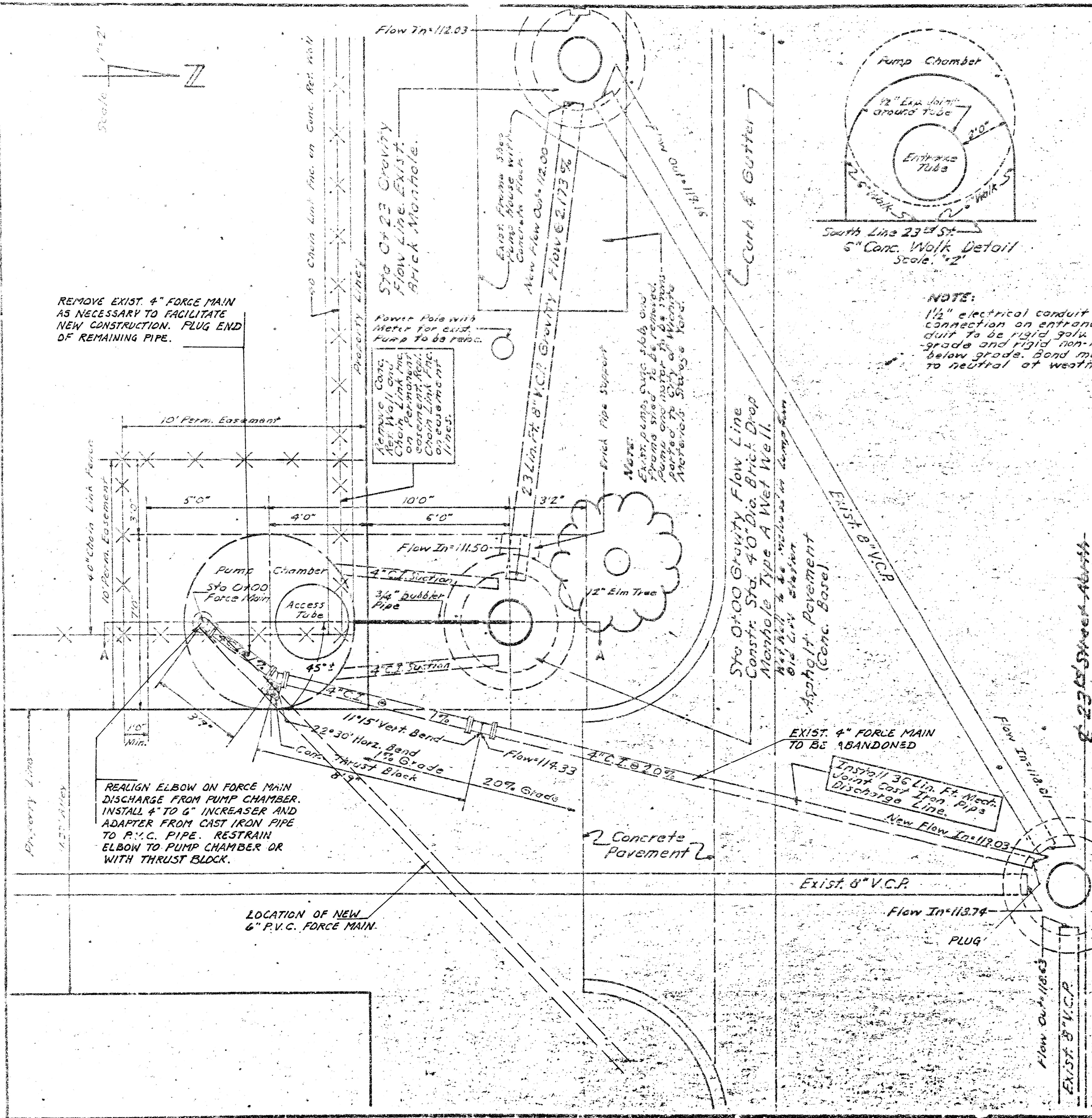
As Built
 J.L.L.
 2-83



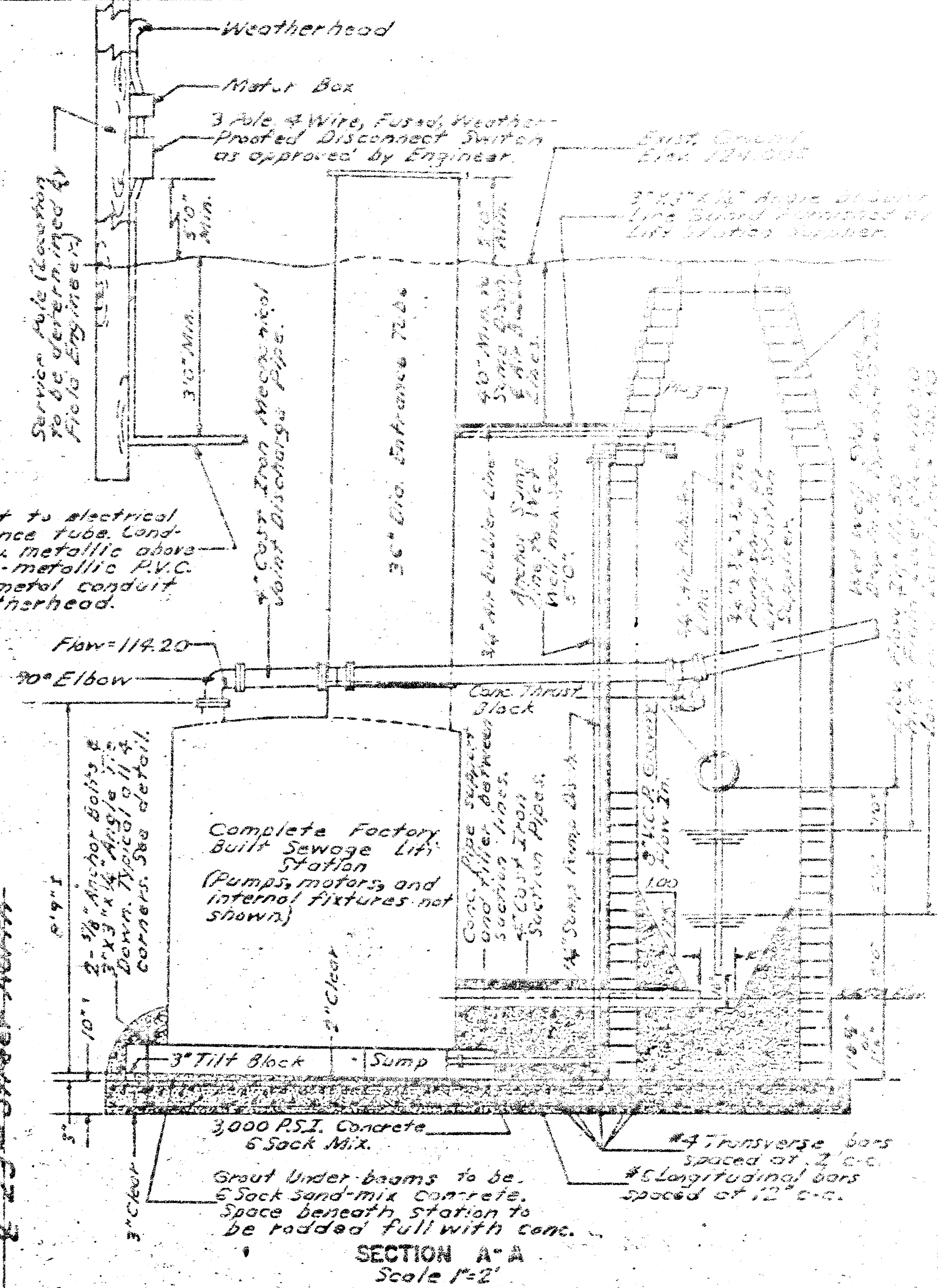
Modification of Lift Station in connection with
 Dist. T. S.S. #20 at 23rd St. No. # Somerset
 #68-76-245-81152-000-000-001
 REVISED 5-25-82



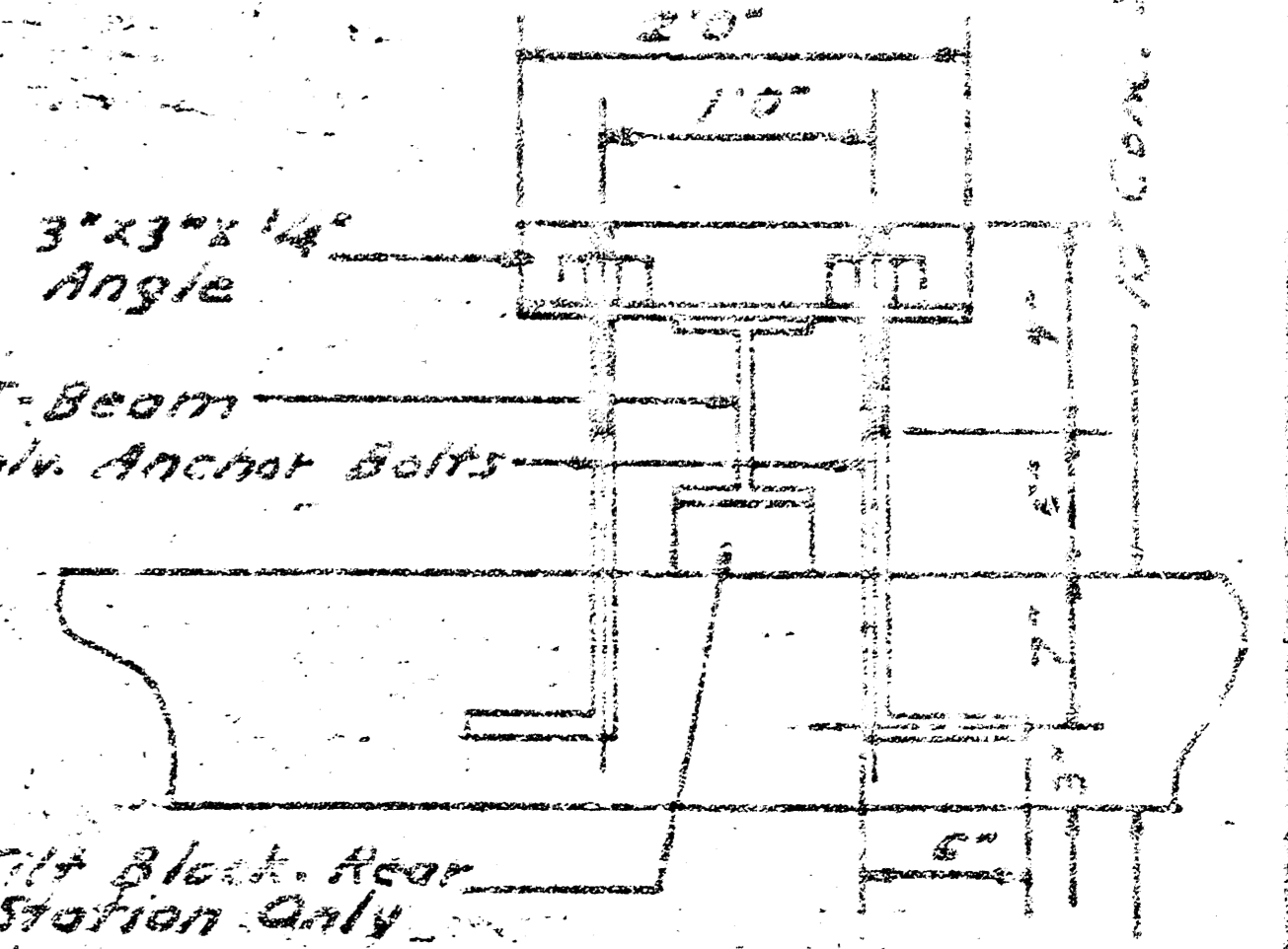
REMOVE EXIST. 4" FORCE MAIN AS NECESSARY TO FACILITATE NEW CONSTRUCTION. PLUG END OF REMAINING PIPE.



NOTE:
1/2" electrical conduit to electrical connection on entrance tube. Conduit to be rigid galv. metallic above grade and rigid non-metallic P.V.C. below grade. Bond metal conduit to neutral at weatherhead.



SECTION A-A
Scale 1/2"



Tie Down Detail
Scale 1/2"

PLAN SHOWING EXISTING LIFT STATION LOCATION AND NEW FORCE MAIN LOCATION
LIFT STATION PLAN IN CONNECTION WITH DIST. T, SAN. SEWER NO. 20
PROJ. No. 468-76-245-81152-000-000-001
REVISED 5-25-82