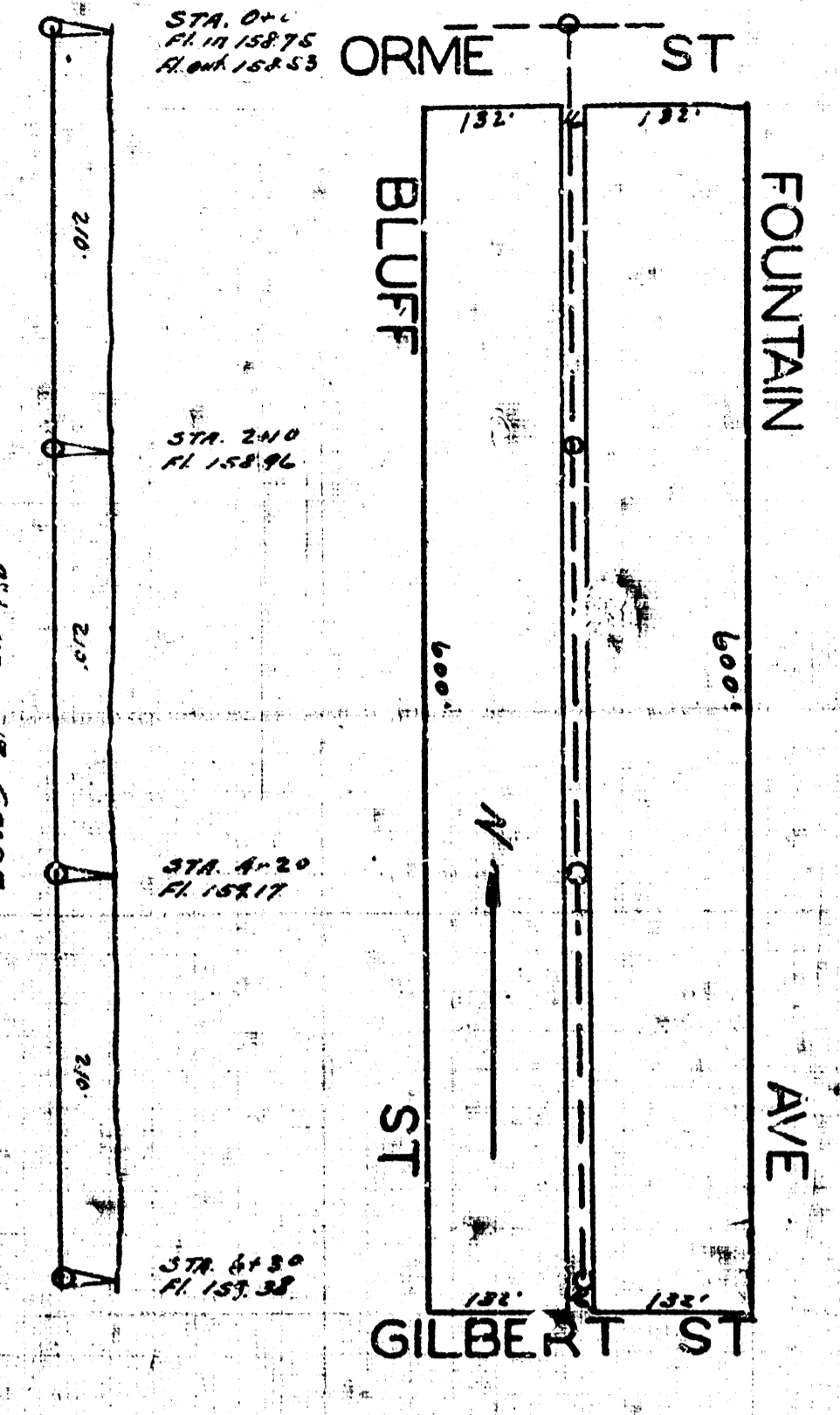
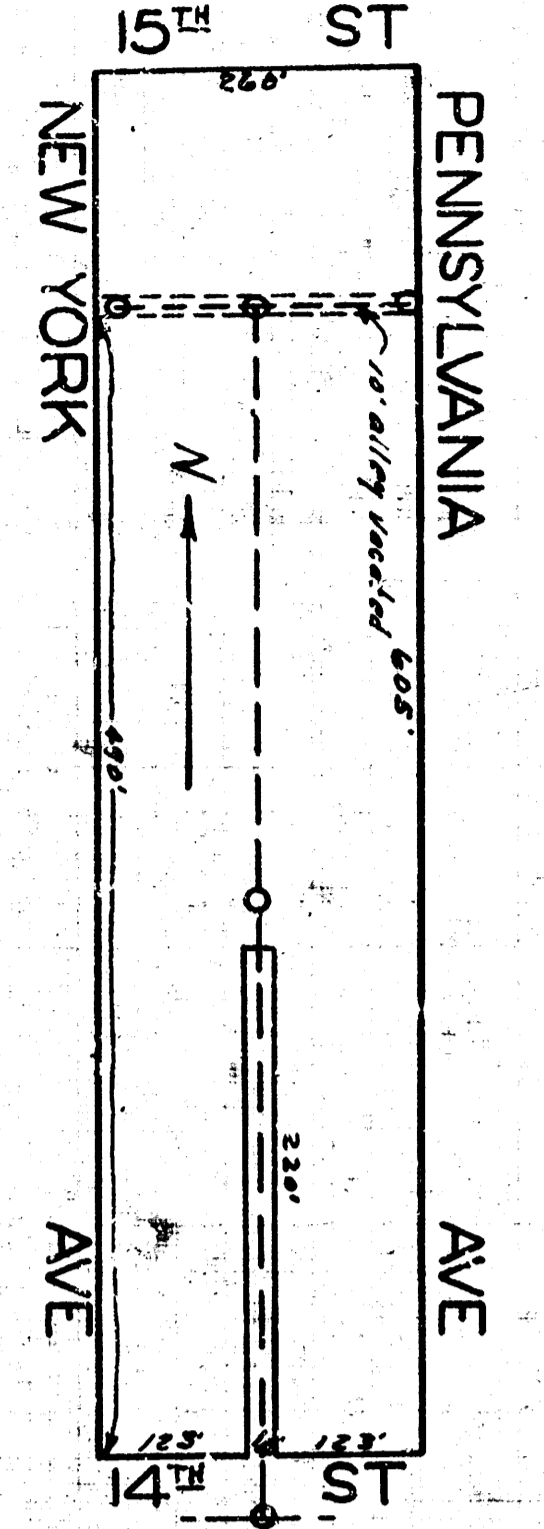
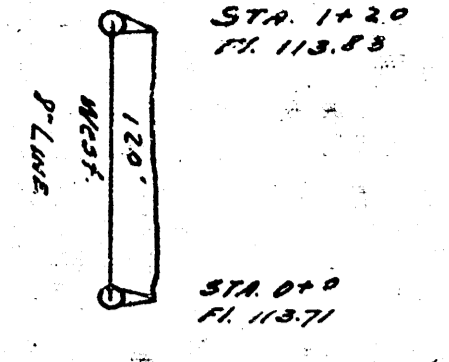


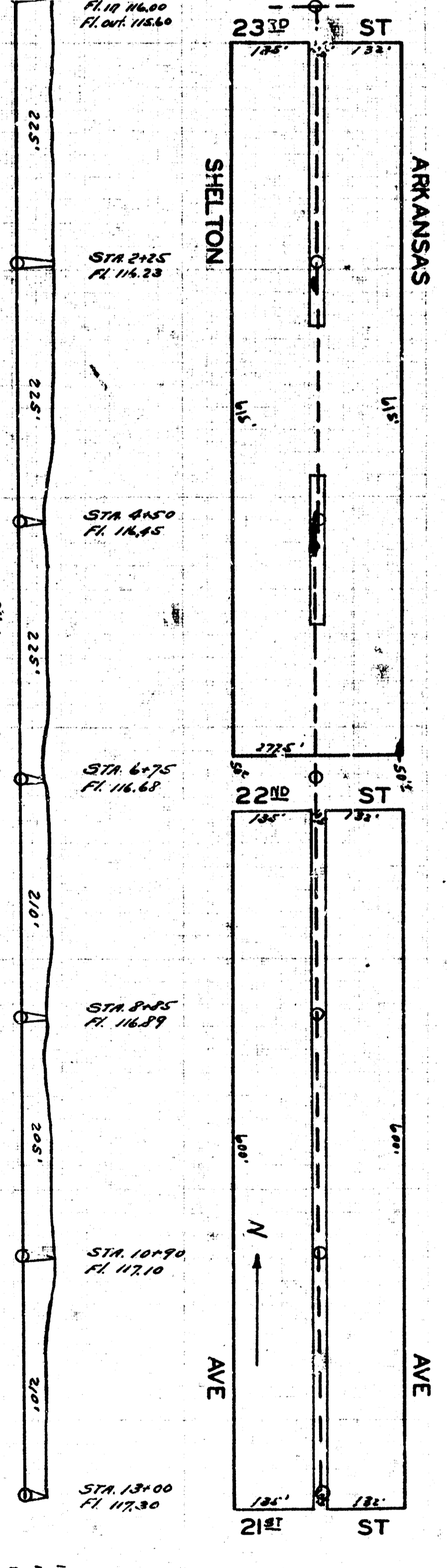
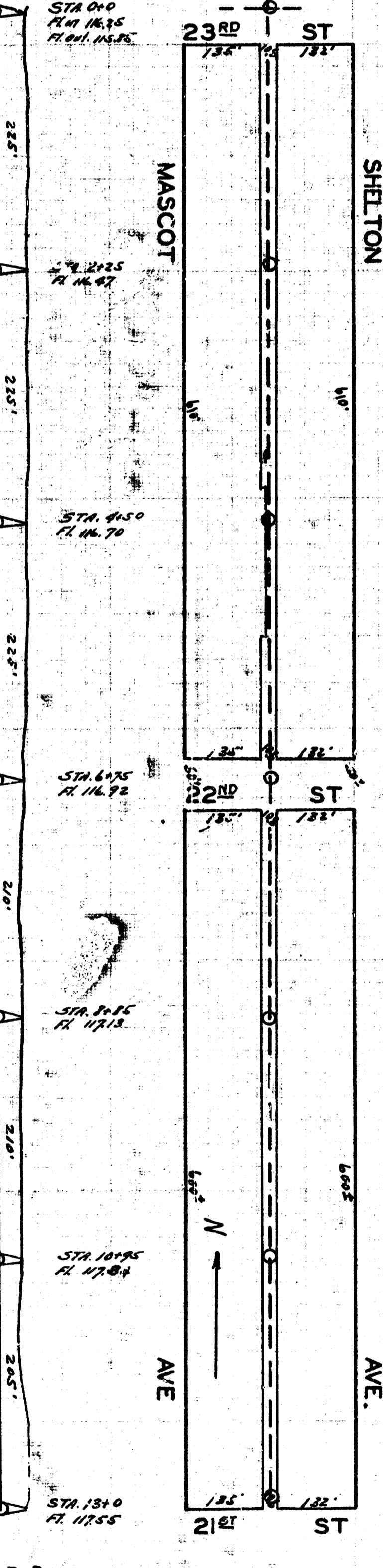
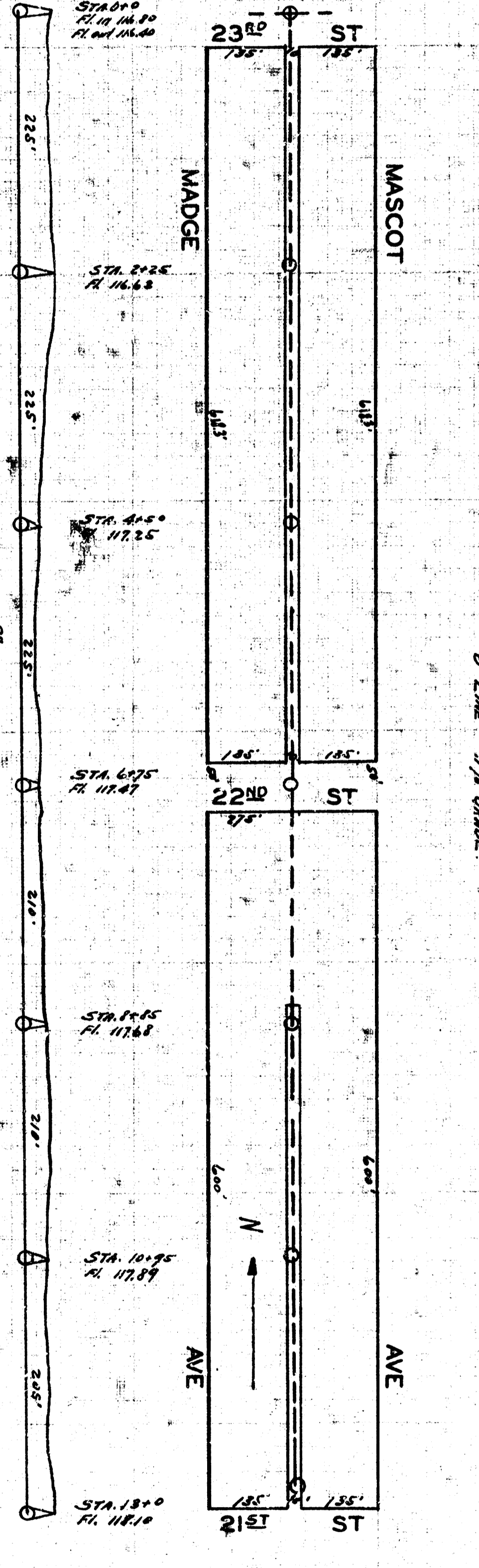
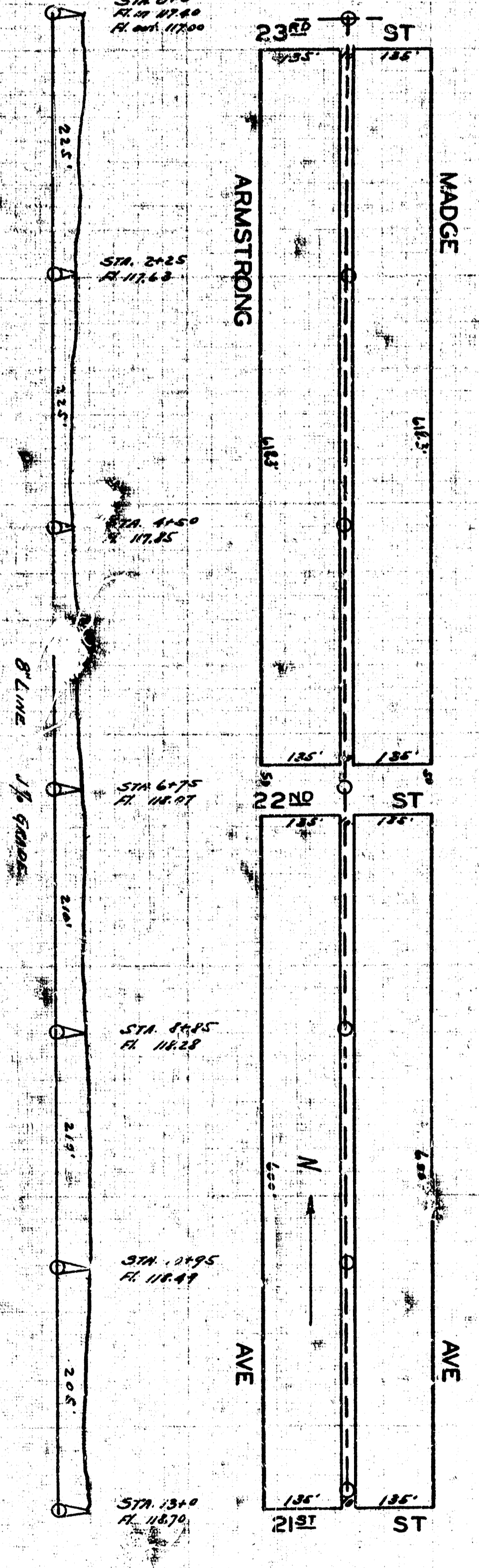
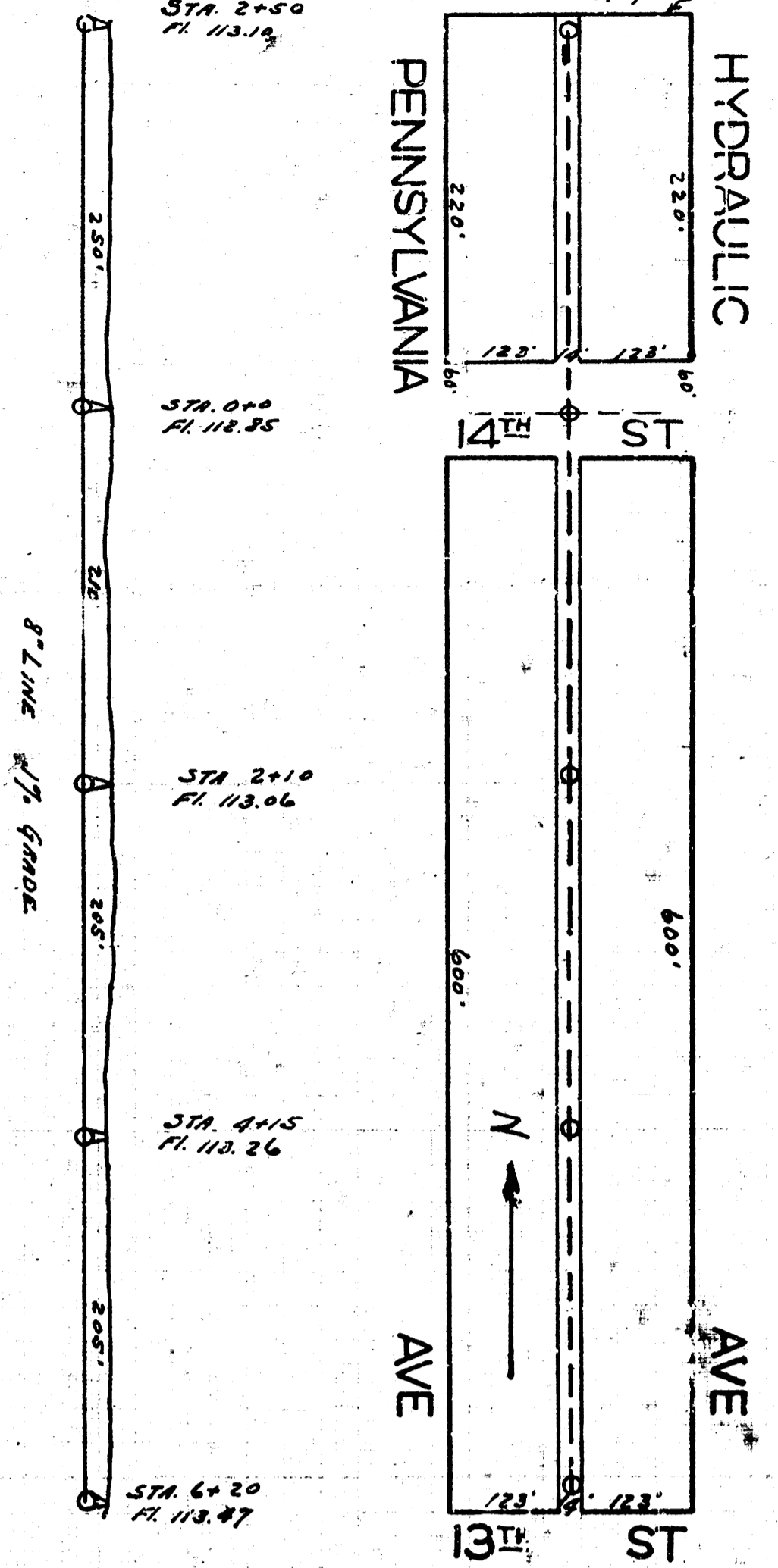
1/2" = 100'0" Plan
 1/4" = 100'0" Profile
 1/8" = 100'0" Hydraulic



LAT. H, DIST. 6,
 S.S. 12.



LAT. C, DIST. R, S.S. 12.



LAT. E, DIST. T, S.S. 20.

1/2" = 100'0" Plan
 1/4" = 100'0" Profile
 1/8" = 100'0" Hydraulic