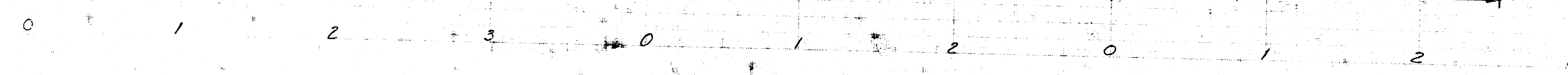
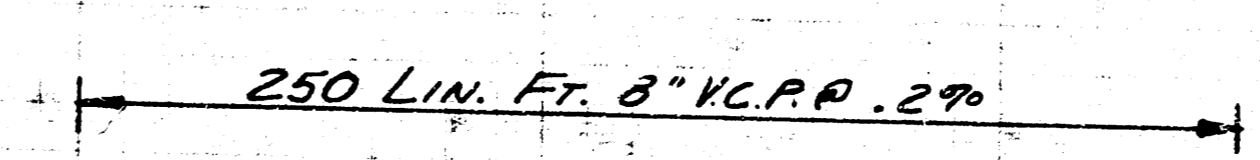
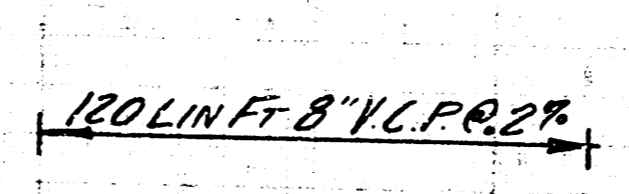
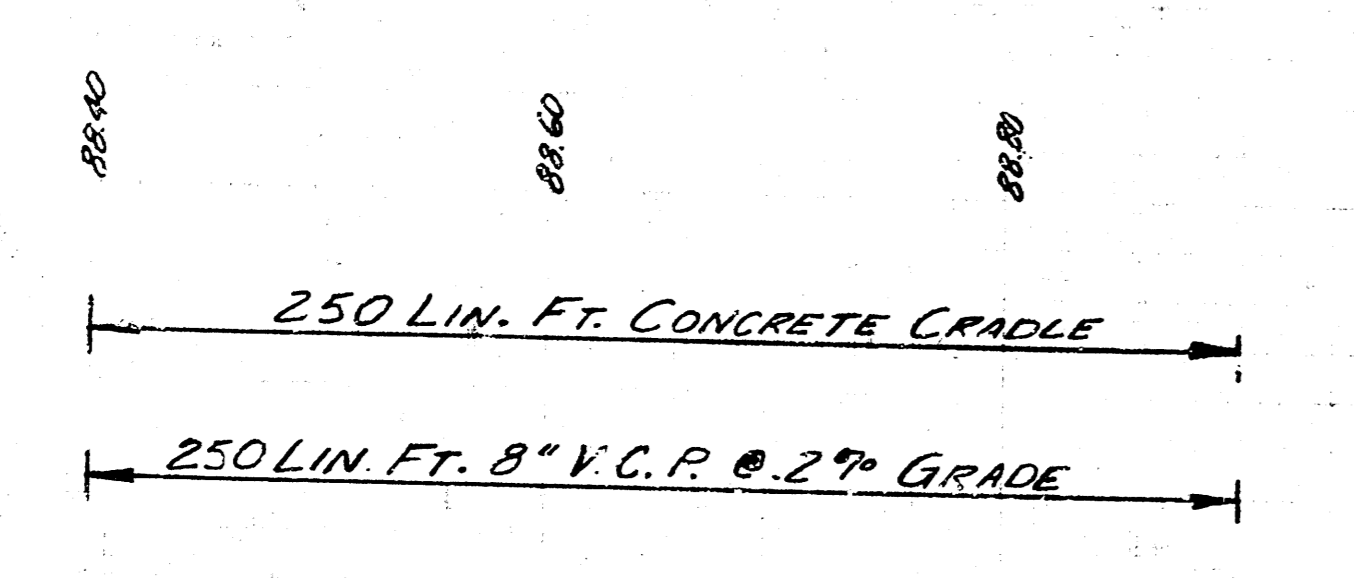
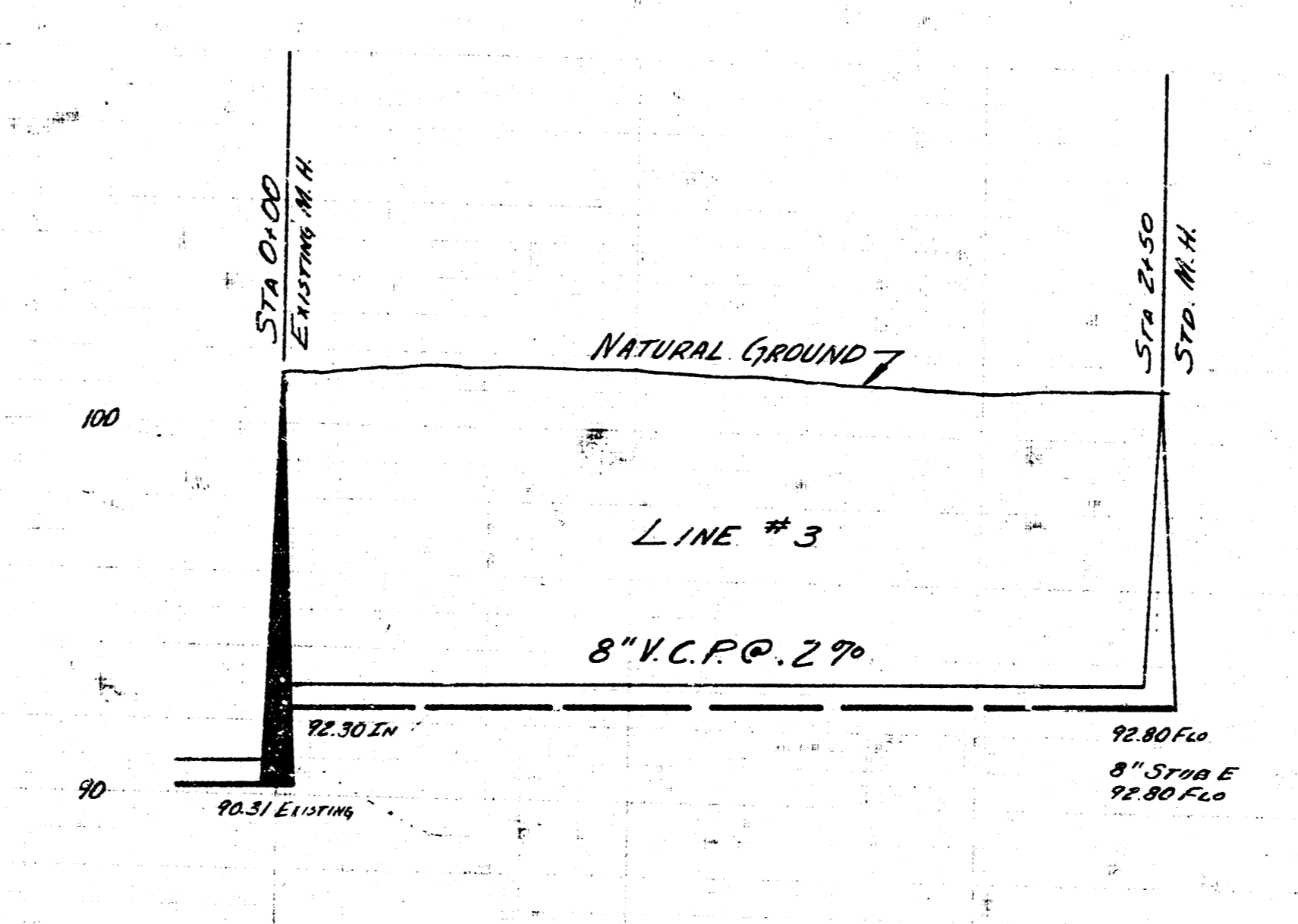
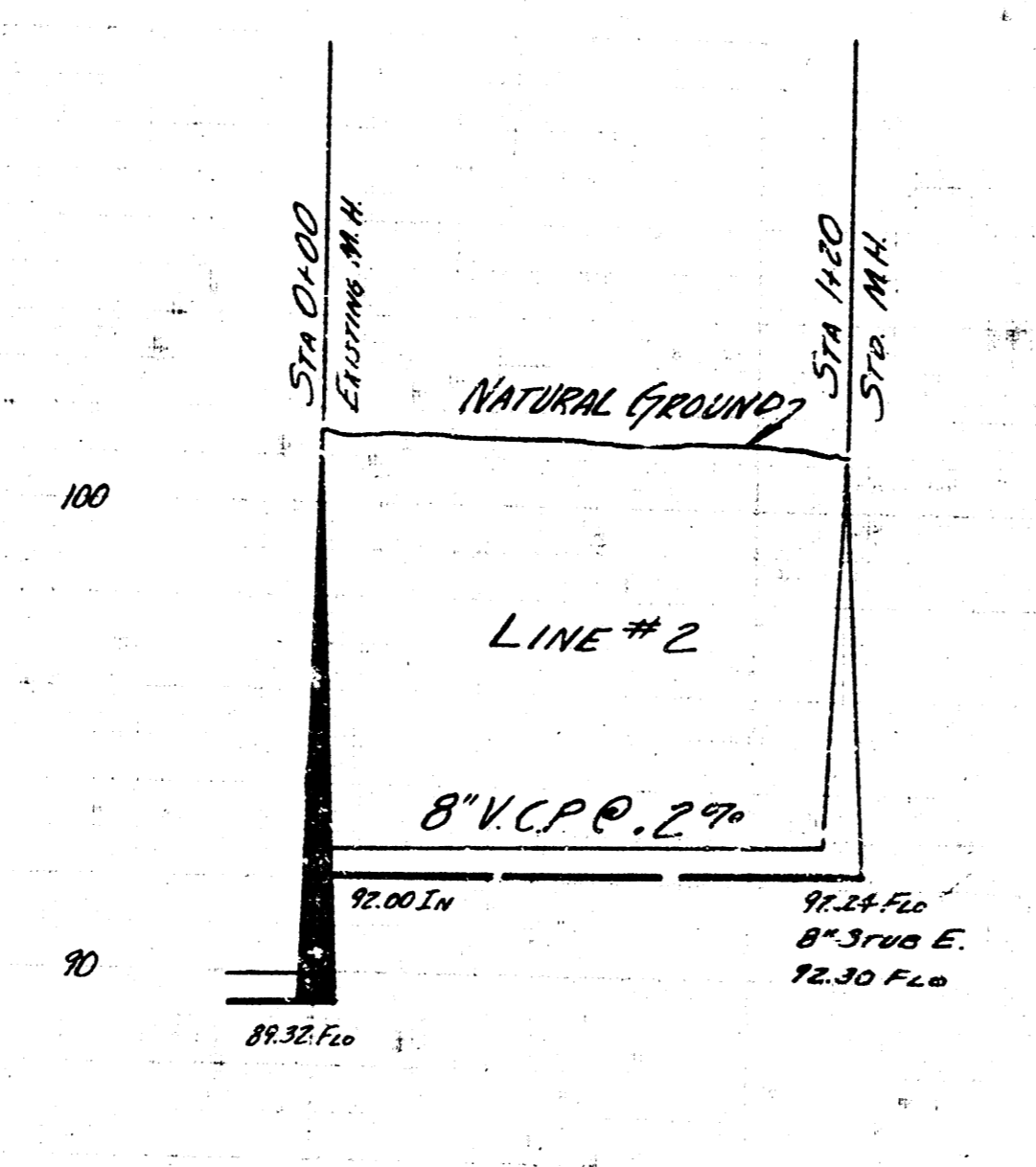
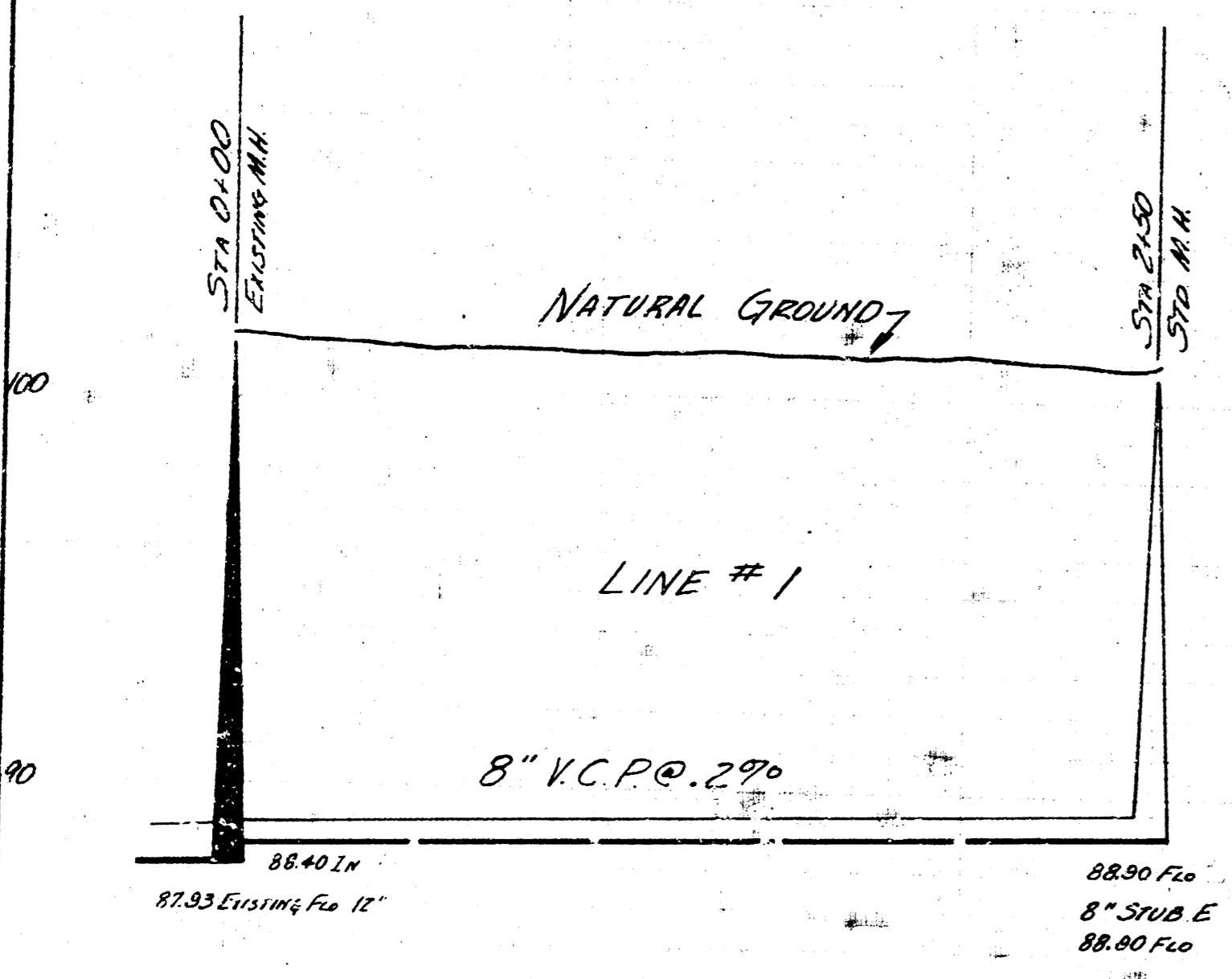


NOTE: VERTICAL RISERS TO BE INSTALLED AS DIRECTED BY THE ENGINEER.

Survey of Haycraft Acres 11/10
Plan C. Success
Checked
Date May 1955

B.M. 101.342 Sta. Glenn & Pawnee 6'x12'S, SW Cor.



PLAN SCALE 1"=40'
PROFILE SCALE 1"=30' HOR. 1"=4' VERT.

LAT 14 SUB. 2 SAN. SEWER 22
CITY OF WICHITA, KANSAS
B.E. SMITH CITY ENGINEER
MAY 1955 PROJ. NO. C25-34