

PROJECT NO.	FISCAL YEAR	SHEET NO.	TOTAL SHEETS
		1	2

CONSTRUCTION PLANS FOR LATERAL 256, MAIN 5 SANITARY SEWER NO. 22

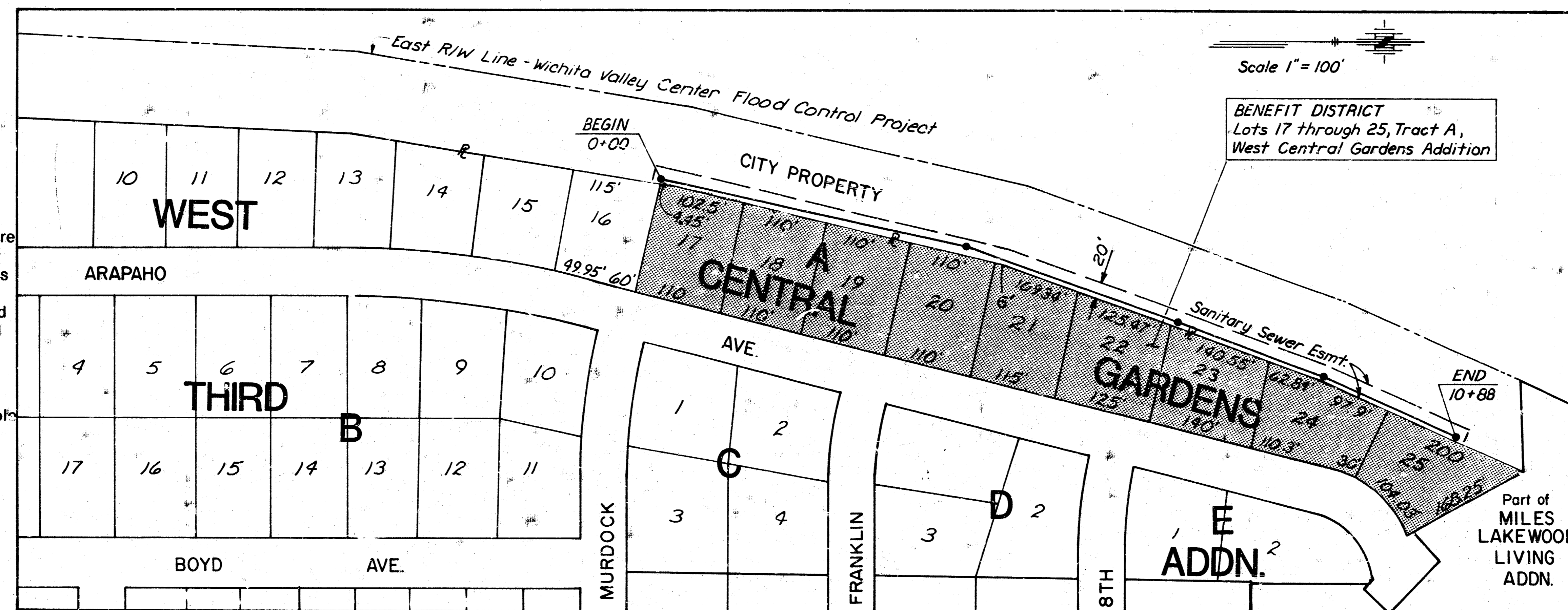
IN

THE CITY OF WICHITA SEDGWICK CO. KANSAS

MICHAEL E. LINDEBAK, P. E. - CITY ENGINEER

GENERAL NOTES

1. All construction and materials shall comply with City of Wichita Specifications and Standards.
2. All elevations shown are City of Wichita Datum (USGS - 1187.4 - CITY DATUM).
3. All grassed areas disturbed by the Contractor shall be seeded, fertilized, and mulched in accordance with the City of Wichita Standard Specifications and in accordance with the City of Wichita Administrative Regulation AR78.
4. Rubble from the removal of miscellaneous structures and excess excavation which is to be wasted shall be disposed of on sites to be provided by the Contractor. These sites shall be approved by the Engineer as to suitability, appearance and site location. Locations that, in the opinion of the Engineer, will leave an unsightly appearance will not be approved.
5. The Contractor shall be responsible for preserving property irons. The Contractor will be required to re-establish any property irons which are damaged or destroyed by his construction operations. Such irons shall be re-established by a licensed land surveyor in accordance with state laws.
6. Trees and shrubs in public right-of-way which are in direct conflict with proposed new construction shall be removed by the Contractor with the Engineer's approval. Trees and shrubs which are not in direct conflict with proposed new construction shall be saved and protected from damage. Cost of tree removal shall be subsidiary to project.
7. Construction of Standard Manholes shall conform to City of Wichita Standards for Type P, Type C, or Type D manholes. The City of Wichita Standard Manhole Cover shall be used at all manhole locations. These standards are available at the City Engineers office and will be provided upon request.
8. The Contractor shall provide positive drainage away from all manhole covers.
9. The Contractor shall give all property owners and/or tenants of developed property abutting the construction of this project a minimum of ten (10) days advance notice prior to start of construction.
10. Underground utility service lines and overhead utility pole lines are to be adjusted as necessary by others prior to construction unless the plans specifically call for their adjustment by the Contractor or unless the plans specifically identify a utility to be adjusted by its owner during construction. Existing utilities and their location, as shown on the plans, represent the best information obtainable for design. The Contractor will be required to work around existing utilities within the right-of-way which do not conflict with proposed construction.
11. The Contractor shall notify pipeline companies at least 24 hours in advance of any work being performed across and/or adjacent to pipelines.



INDEX OF SHEETS
1. TITLE SHEET
2. PLAN/PROFILE

INDEX CODE-740431

CITY OF WICHITA PROJECT NO. 468 76 245 82051 000 000 001

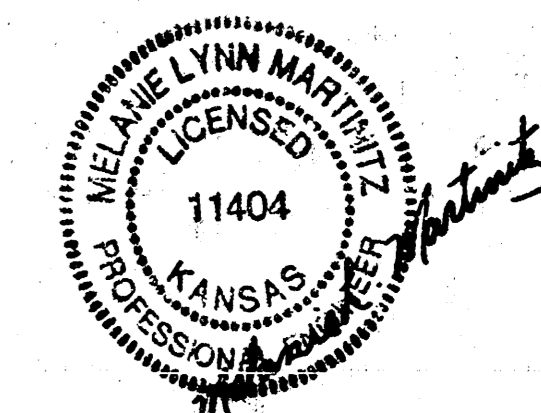
MAY 1990

PLANS PREPARED BY

MID-CONTINENT ENGINEERS

WICHITA, KANSAS

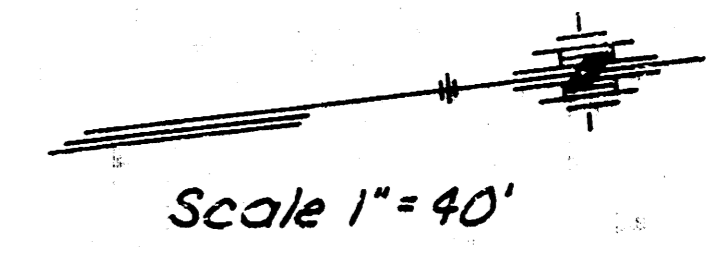
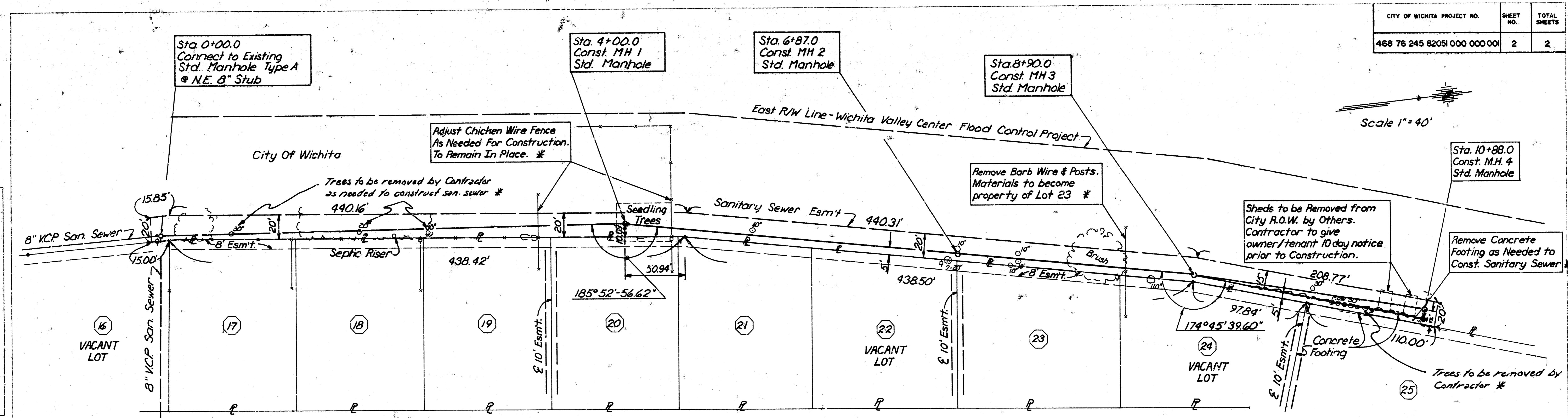
AS BUILT
RDL
8-90



MID-CONTINENT ENGINEERS SALINA WICHITA KANSAS	DESIGNED M.L.M. SCALE 1"=100'
	DETAILED D.L.R. DATE 5-15-90

FILMED FROM THE BEST AVAILABLE COPY

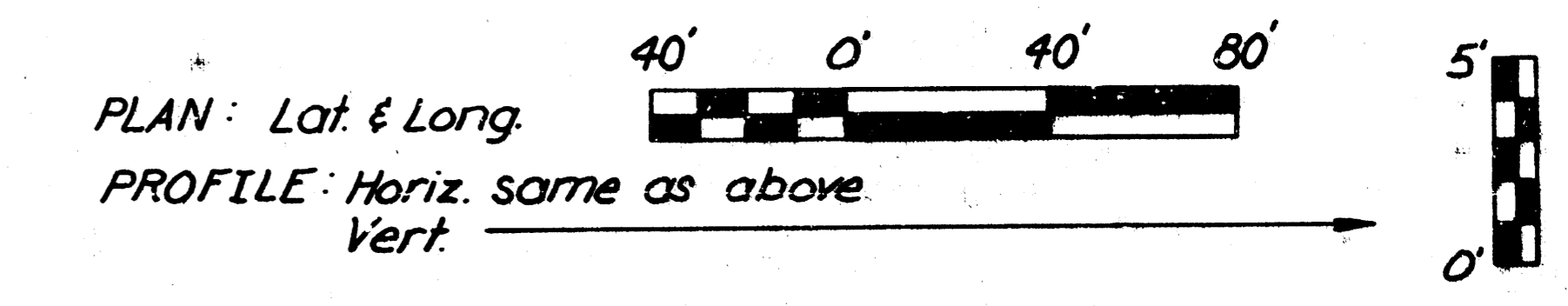
CITY OF WICHITA PROJECT NO.	SHEET NO.	TOTAL SHEETS
468 76 245 82051 000 000 001	2	2



Scale 1" = 40'

PLAN
 DATE: _____
 BY: _____
 CHECKED: _____
 IN CHARGE: _____
 NO. _____

ARAPAHO

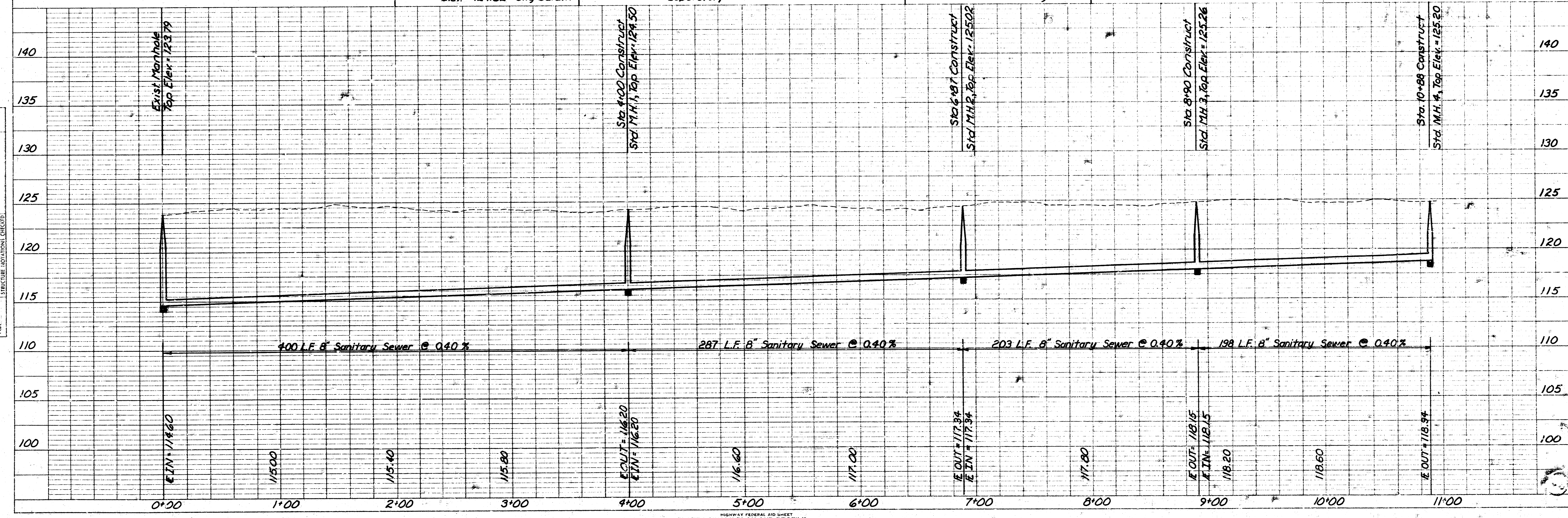


* Found Property Pins (May 4, 1990)

B.M. N.W. Corner Porch of House @ 764 Arapaho
 Elev. = 124.62 City Datum

* Cost to be subsidiary to project and not paid for separately.

B.M. N.W. Corner Porch of House @ 906 Arapaho
 Elev. = 125.94 City Datum



PROFILE
 DATE: _____
 BY: _____
 CHECKED: _____
 IN CHARGE: _____
 NO. _____

PLATE 1-SINGLE PLAN AND PROFILE-FULL LINE
 PRINTED IN U.S.A.

FILMED FROM THE BEST AVAILABLE COPY