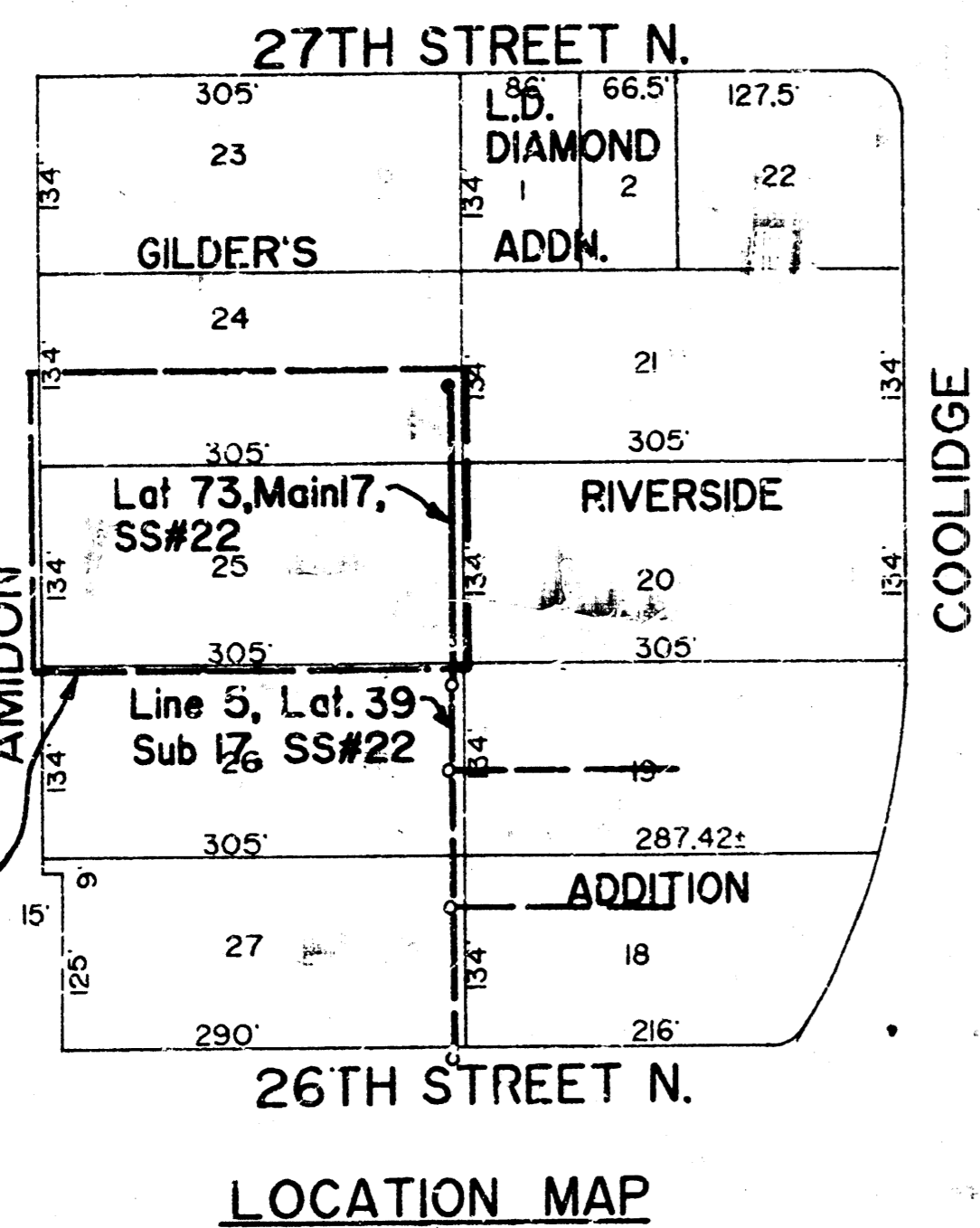
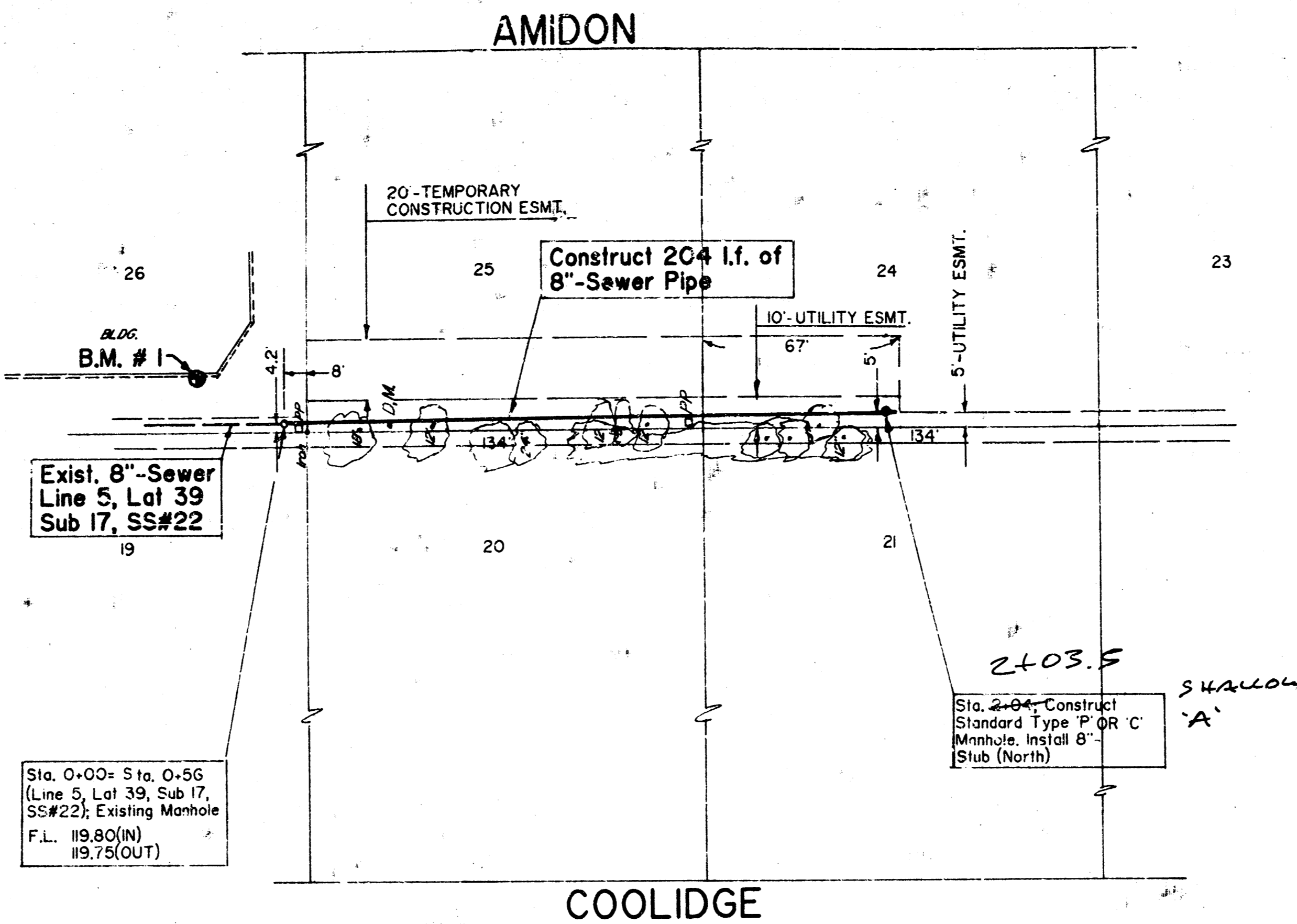


CITY OF WICHITA, KANSAS
 SANITARY SEWER IMPROVEMENTS
 LATERAL 73, MAIN 17, SANITARY SEWER # 22



Scale: 1"=150'
 Benefit District Boundary



- NOTES:**
- Trees and shrubs which are in direct contact with proposed new construction shall be removed by the Contractor with the Engineer's approval. Trees and shrubs which are not in direct contact with the proposed new construction shall be saved and protected from damage. The cost of any necessary tree trimming, and/or grubbing shall be included in the price bid for installed sewer pipe.
 - Power Poles (PP) shown on the plan are owned by Southwestern Bell Telephone Co. The Contractor shall give the telephone company (Bob Alay, Tel: 269-2256) at least 30 days advance notice before construction so that the power poles can be adjusted and/or relocated.

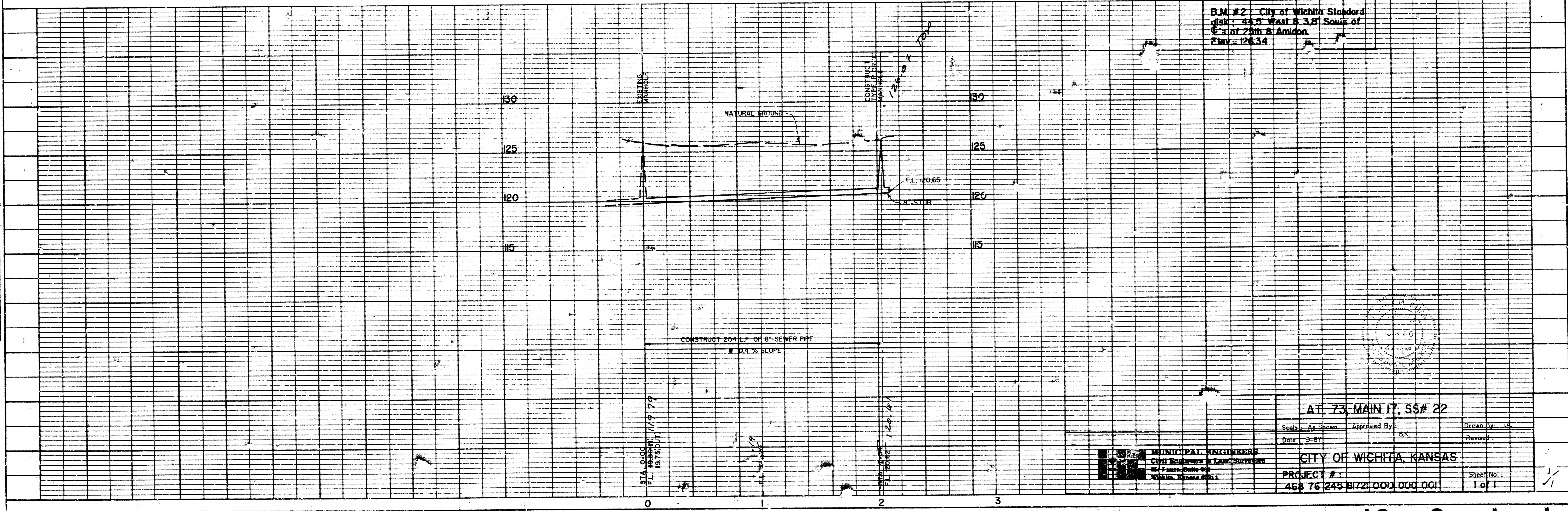
*AS BUILT
 RAC
 2-88*

Michael E. Lindebak, P.E., City Engineer

SCALE:
 Plan: 1"=40'
 Profile: 1"=40' (H)
 1"= 5' (V)

B.M. #1: 'a' Cut in conc. footing of building; 30' South 8 1/2' West of NE Corner of Lot 26, Gilder's Riverside Addition. Elev.= 127.52

B.M. #2: City of Wichita Standard disk; 44.5' West & 3.81' South of C of Lot 26th & Amidon. Elev.= 126.34



AT 73, MAIN 17, SS# 22			
Scale: As Shown	Approved By: BK	Drawn by: LA	Sheet No. 1 of 1
Date: 3-87	Revised:		
MUNICIPAL ENGINEERS CITY ENGINEERS & LAND SURVEYORS 458 76 245 B1721 000 000 001 Wichita, Kansas 67201		CITY OF WICHITA, KANSAS	

10 2 1 1