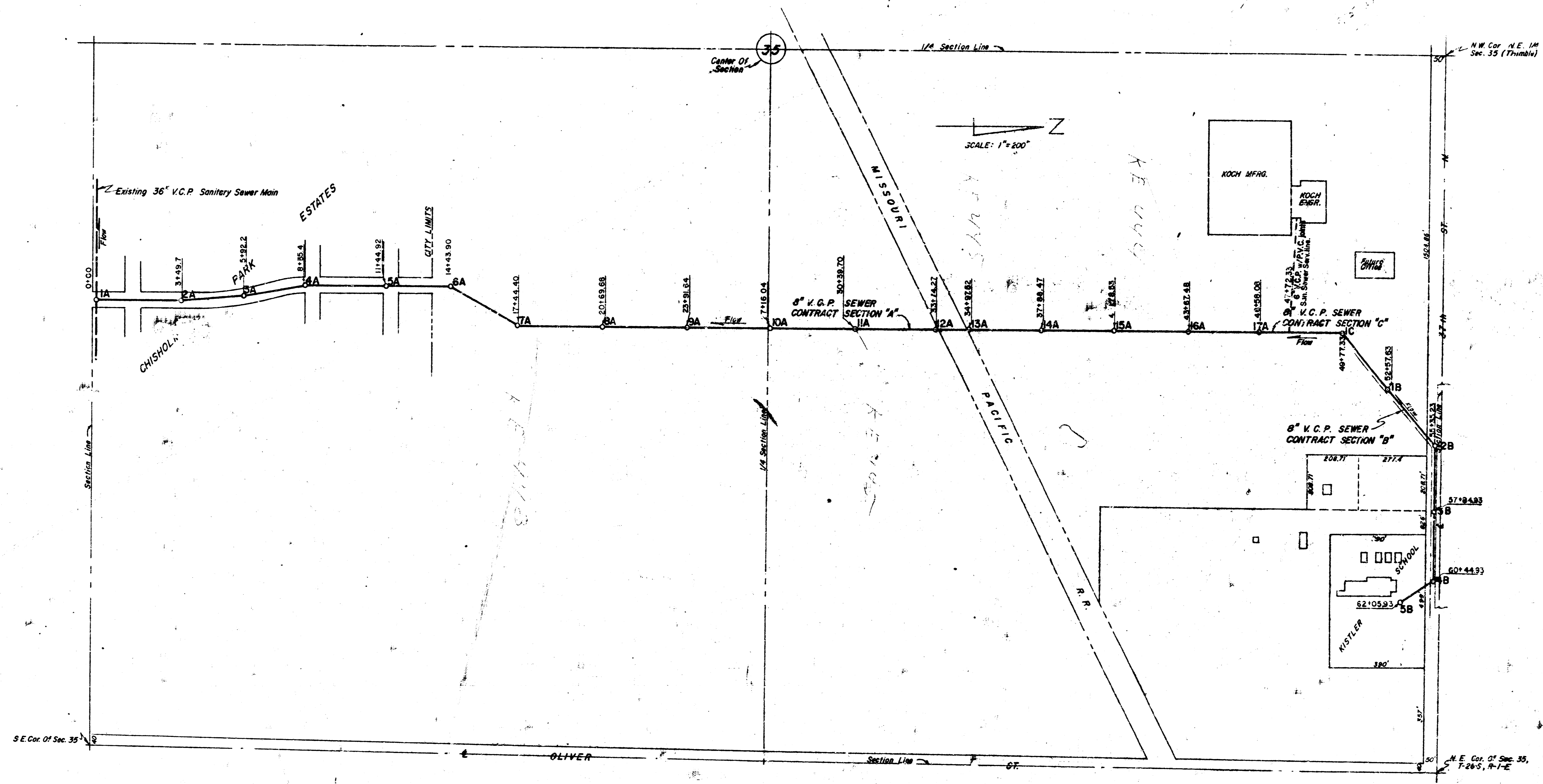


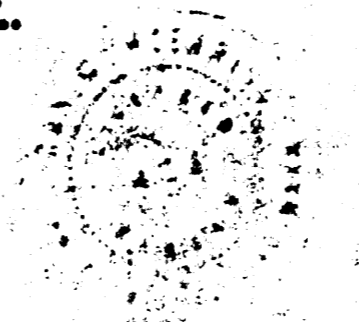
SANITARY SEWER
 FOR
KOCH ENGINEERING CO., INC.
 LAT. 24 S.S. 23

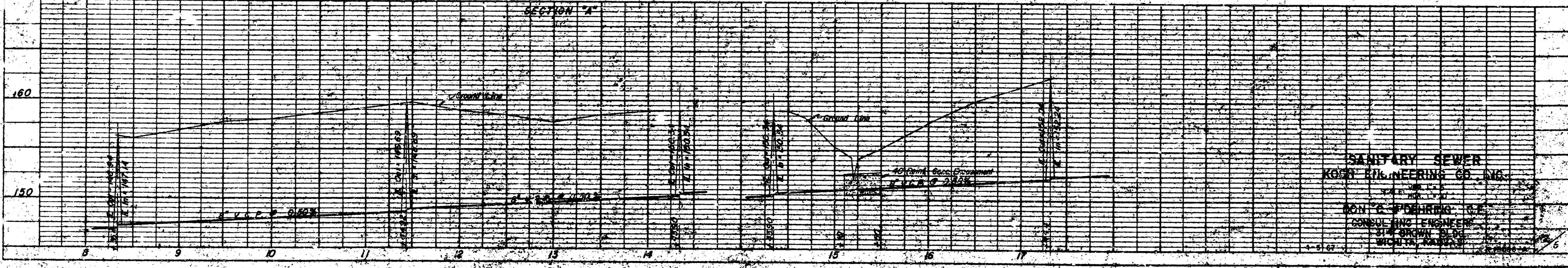
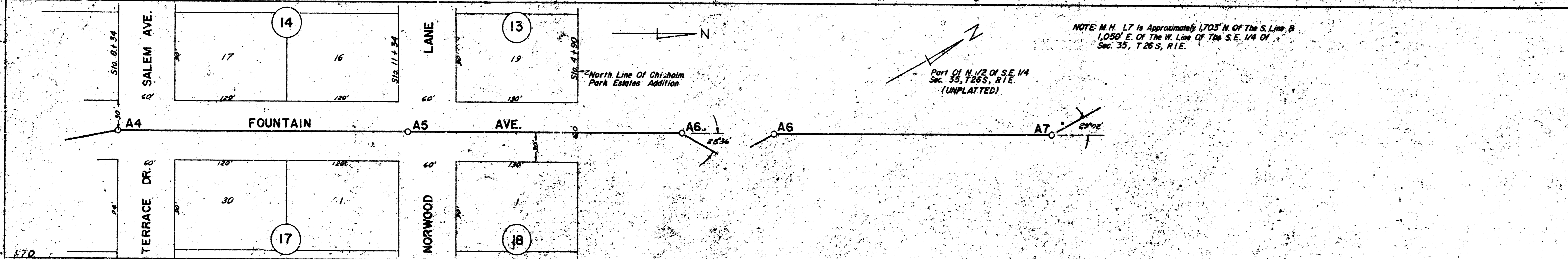
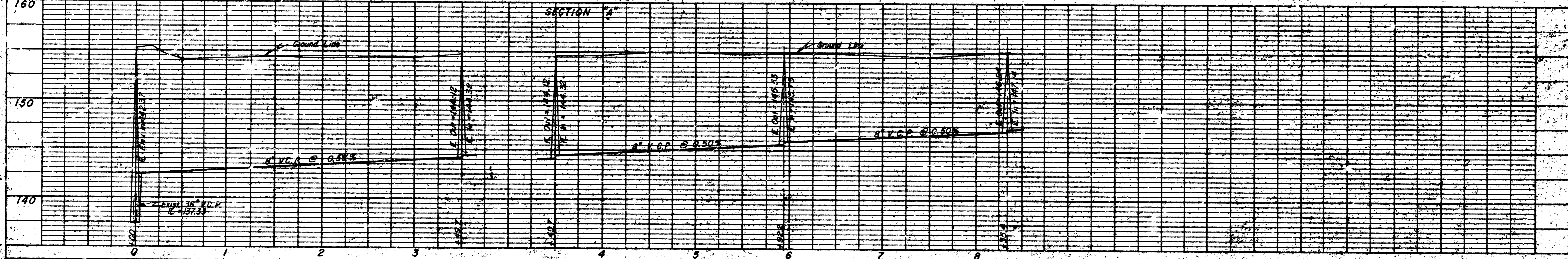
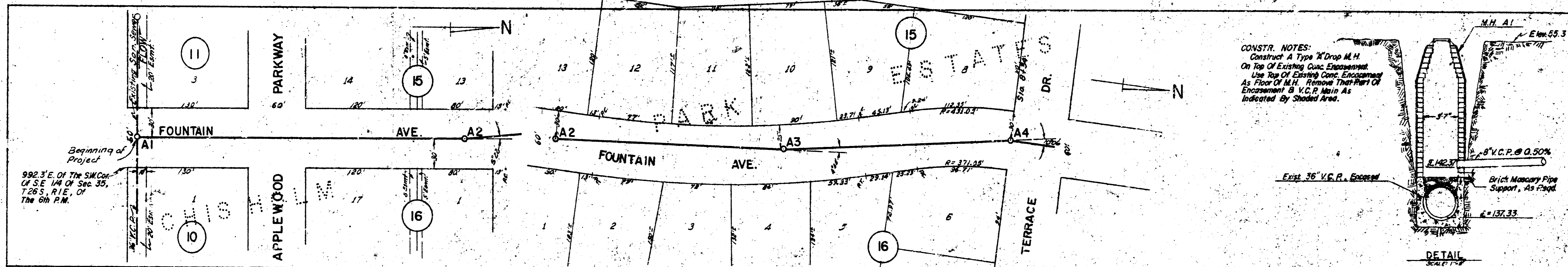
157-2000
 1970, 191-253
 14-913, 26012
 750 1300



DON C. MOHRING, C.E.
 CONSULTING ENGINEERS
 WICHITA, KANSAS
 1967

L-121

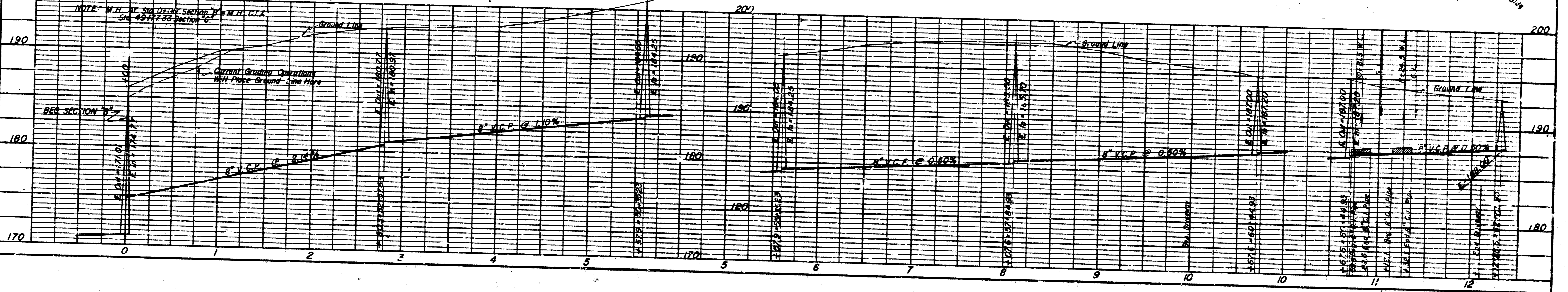
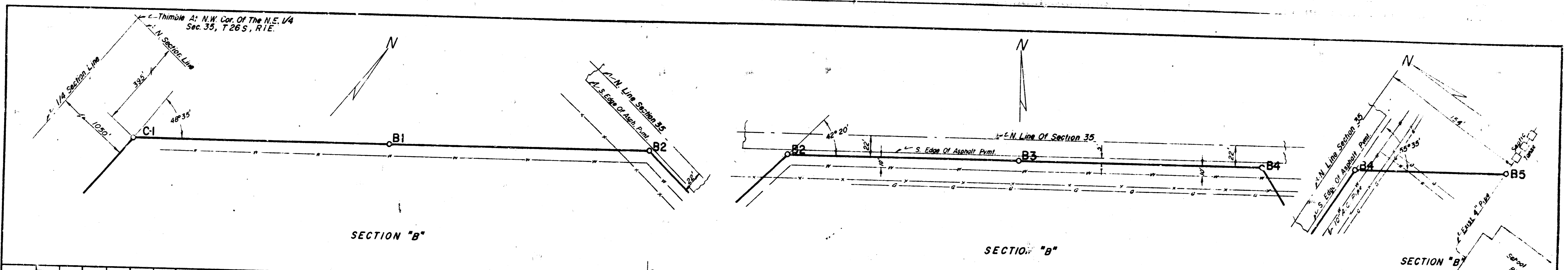




SANITARY SEWER
KOHN ENGINEERING CO. INC.
 1000 N. 10th St.
 Des Moines, Iowa 50319
 515-281-1111

DATE	
BY	
CHECKED	
APPROVED	

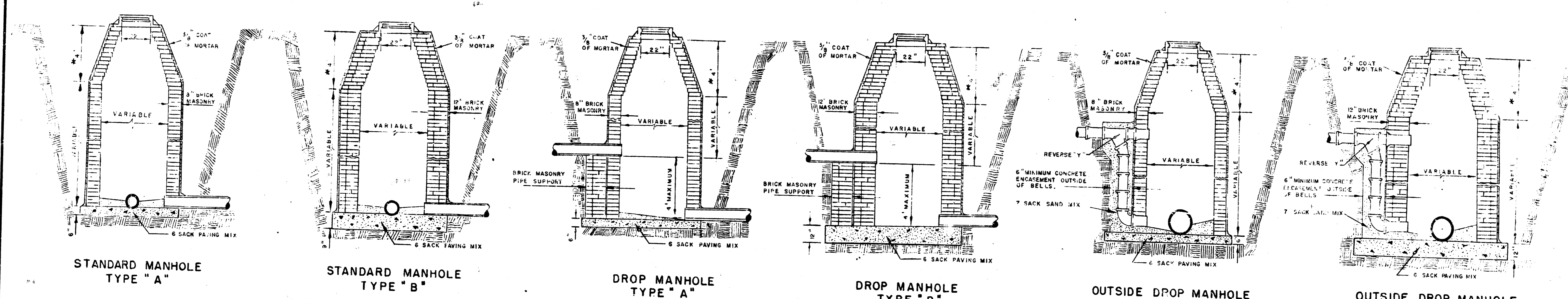
DATE	
BY	
CHECKED	
APPROVED	



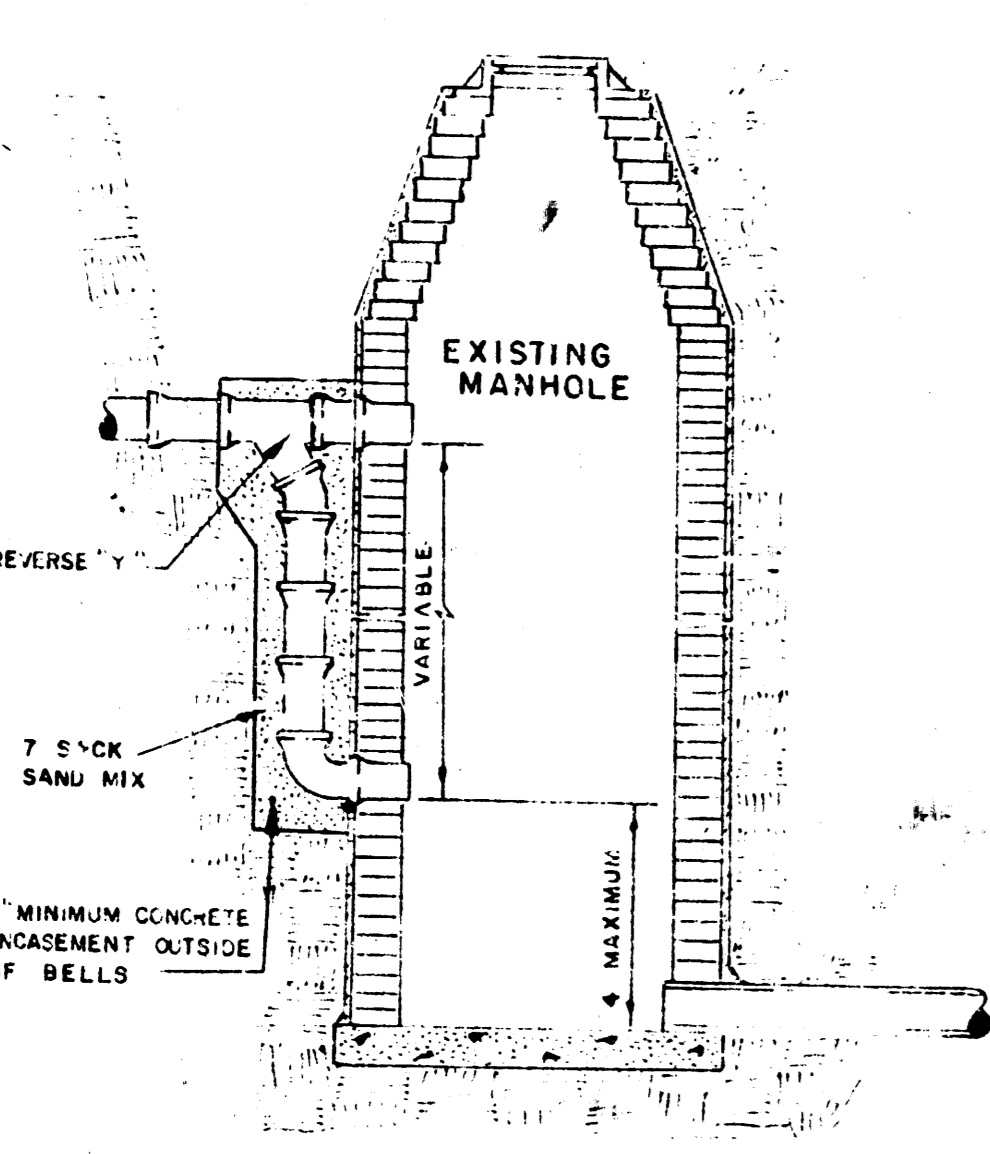
PLAN	DATE
REVISED	
NOTED	
BY	
BY	
BY	

PROFILE	DATE
REVISED	
NOTED	
BY	
BY	
BY	

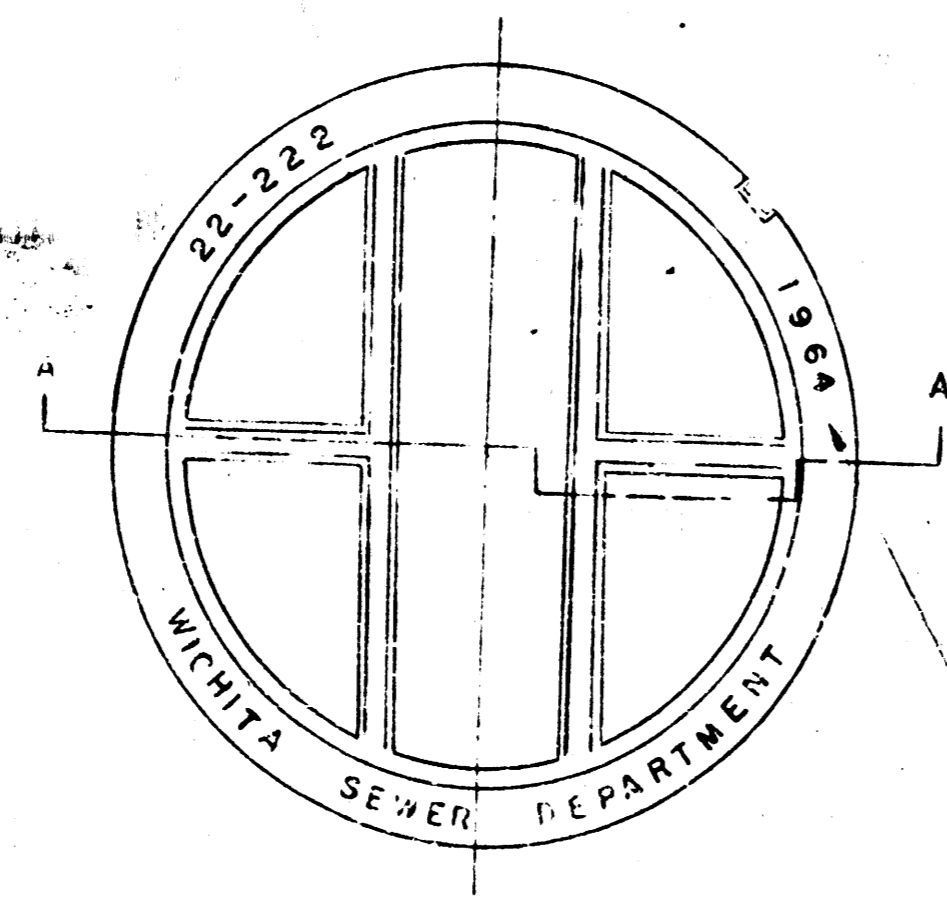
SANITARY SEWER
 KOCH ENGINEERING CO., INC.
 DON C. MOHRING, C.E.
 CONSULTING ENGINEERS
 514 BROWN BLDG.
 WICHITA, KANSAS



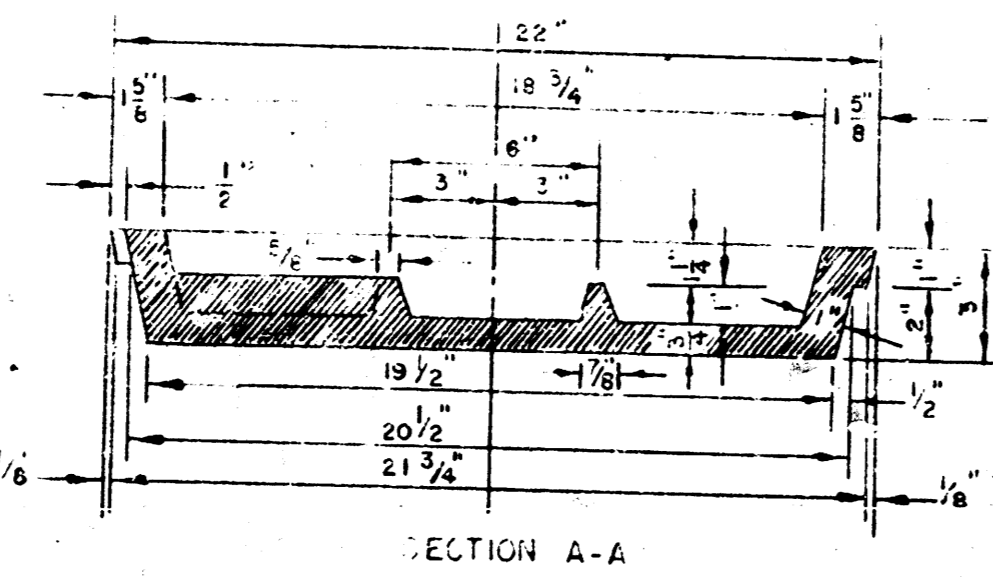
* DRAW = 6" ON 5' DIA. M.H.



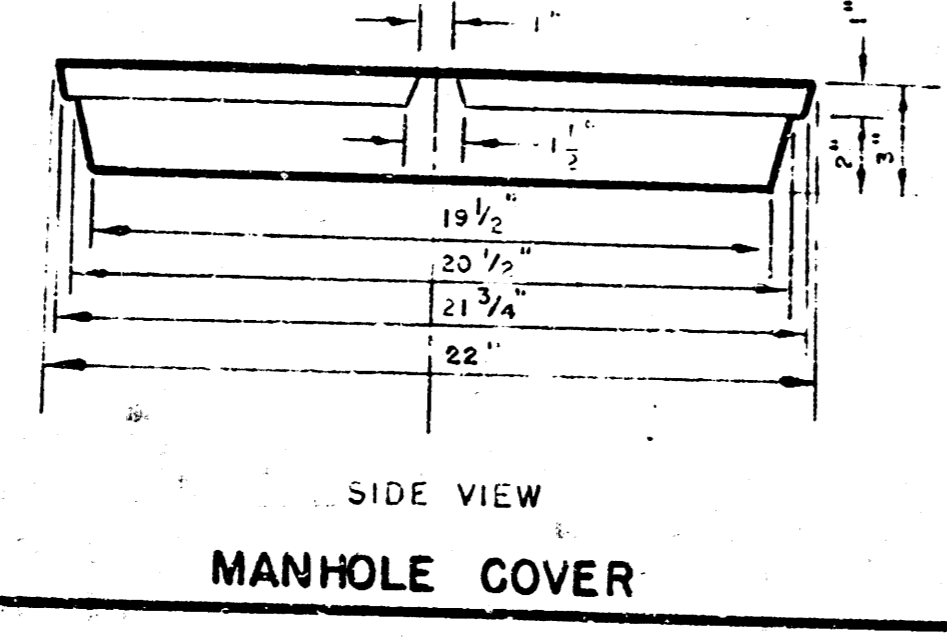
DETAIL OF DROP STACK FOR EXISTING MANHOLES IN GROUND WATER



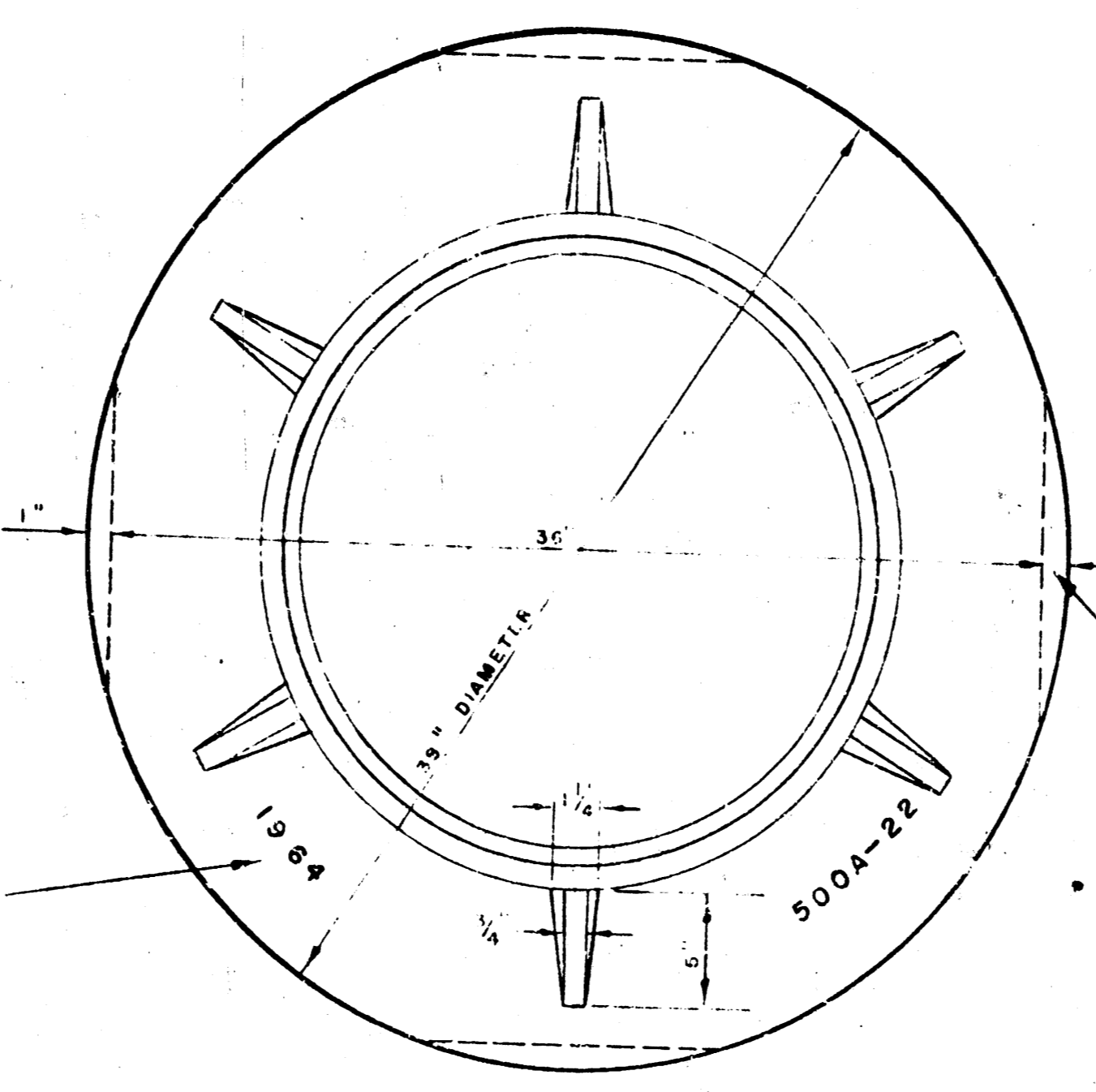
TOP VIEW MANHOLE COVER WEIGHT 125 LBS.



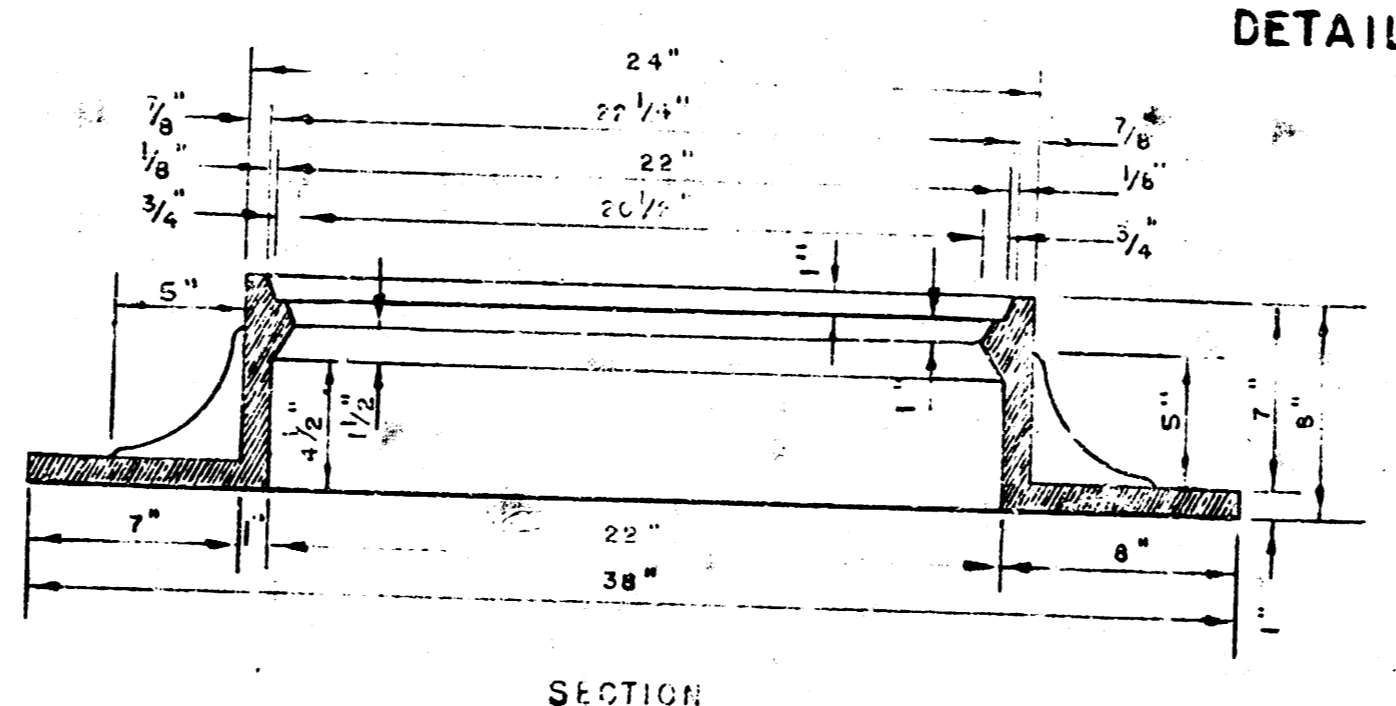
SECTION A-A MANHOLE COVER



SIDE VIEW MANHOLE COVER

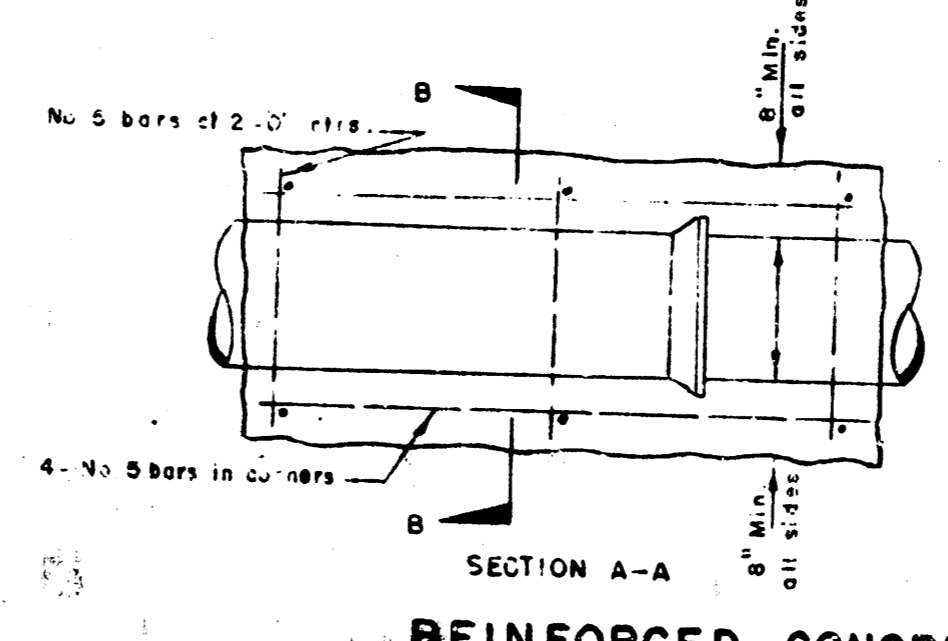


TOP VIEW MANHOLE RING WEIGHT 355 LBS.

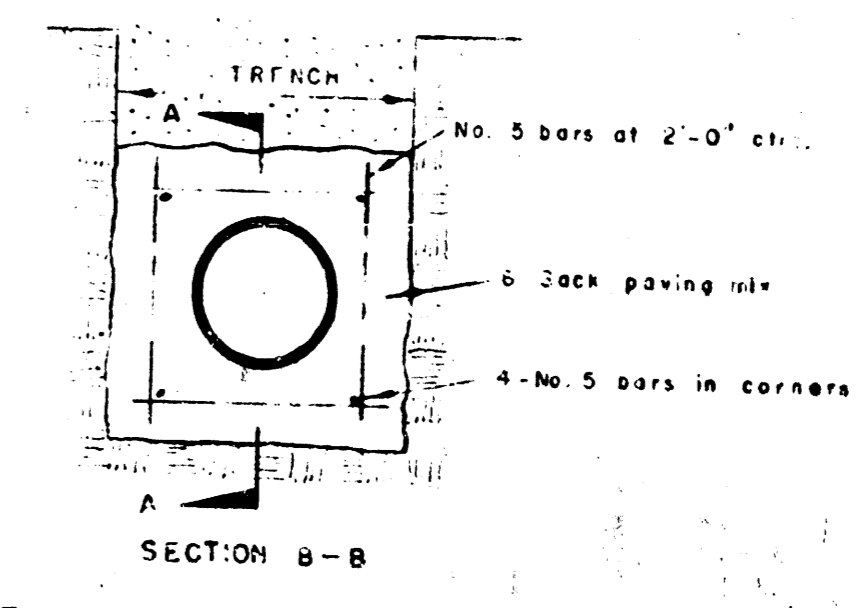


SECTION MANHOLE RING

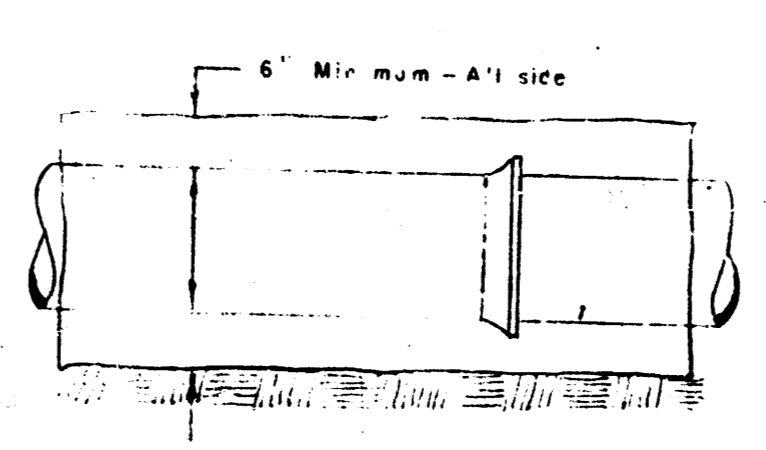
OUTSIDE CIRCUMFERENCE OF COVER AND THE INNER FACE AND SEAT OF RING TO BE MACHINE FIT.



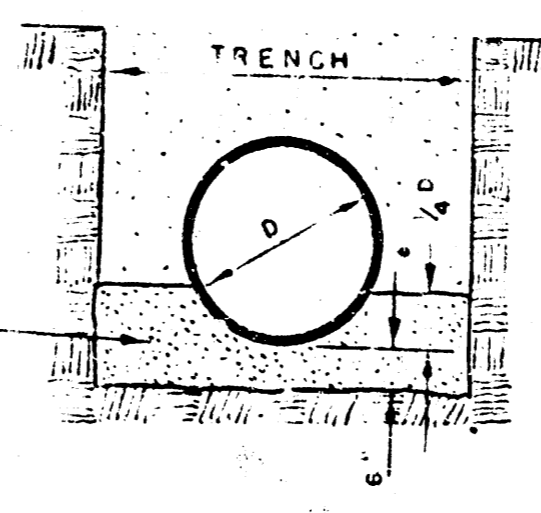
SECTION A-A REINFORCED CONCRETE ENCASEMENT FOR STRENGTH



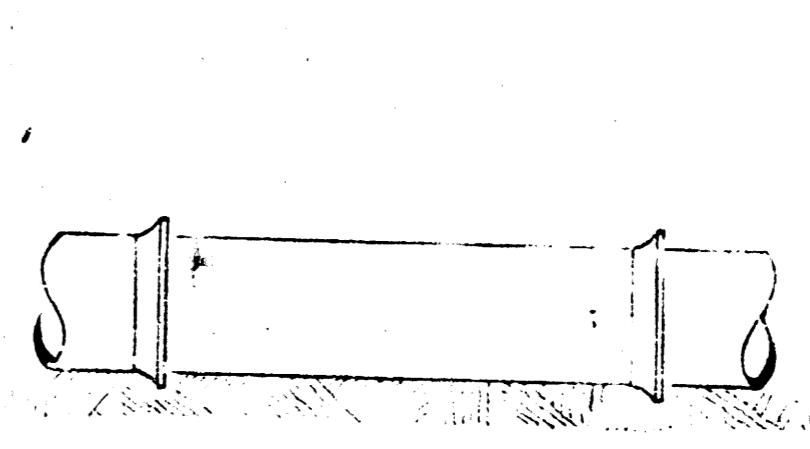
SECTION B-B REINFORCED CONCRETE ENCASEMENT FOR STRENGTH



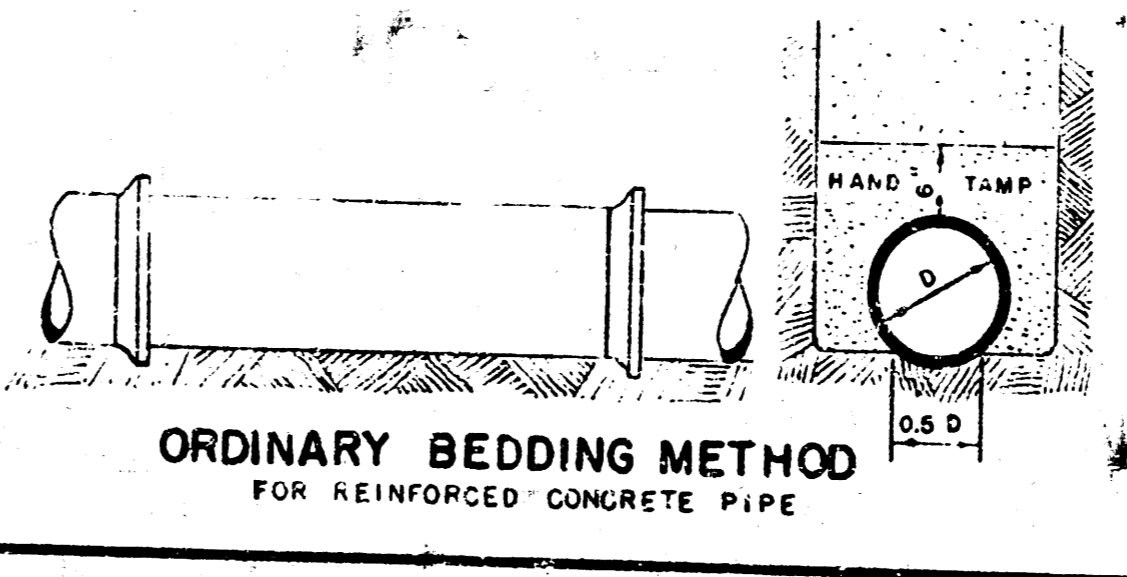
SECTION CONCRETE ENCASEMENT FOR COVER



DETAIL OF CONCRETE CRADLE



ORDINARY BEDDING METHOD FOR CLAY PIPE



ORDINARY BEDDING METHOD FOR REINFORCED CONCRETE PIPE

MANHOLES
 THE CONCRETE USED FOR MORTAR IN MANHOLES SHALL CONTAIN 8 SACKS OF CEMENT PER CUBIC YARD.
 STANDARD MANHOLES AND DROP MANHOLES, REGARDLESS OF DIAMETER, SHALL BE BID AT ONE PRICE AS STANDARD MANHOLES.
 SINGLE OR DOUBLE OUTSIDE DROP MANHOLES SHALL BE BID AT ONE PRICE AS OUTSIDE TYPE MANHOLES.
 ALL MANHOLES WITH PIPES LARGER THAN 24" SHALL BE 5' DIAMETER UNLESS OTHERWISE SPECIFIED ON PLAN. ALL M.H.'S WITH PIPES 24" & SMALLER SHALL BE 4' DIA.

DETAILS OF SEWER APPURTENANCES ADOPTED AS STANDARD DESIGN BY ENGINEERING DIVISION CITY OF WICHITA, KANSAS DON C. MOERING, C.E. CONSULTING ENGINEERS 1937