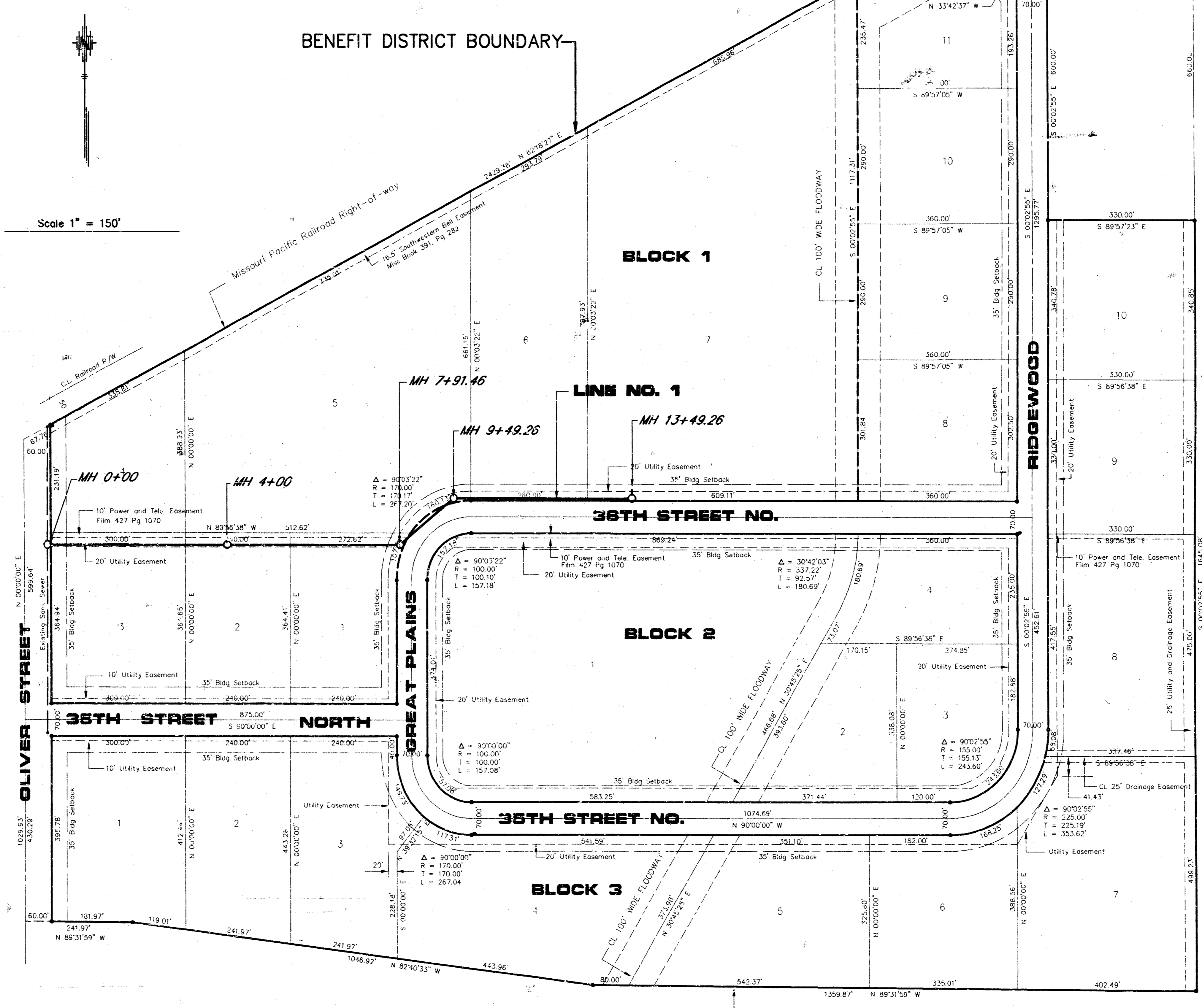


**CONSTRUCTION PLANS**  
 SANITARY SEWER EXTENSIONS  
**GREAT PLAINS BUSINESS PARK 2ND ADDITION**  
 TO  
**THE CITY OF WICHITA, KANSAS**

MICHAEL E. LINDEBAK, P.E. - CITY ENGINEER  
 LATERAL 74, SANITARY SEWER NO. 23  
 PROJECT NO. 468-82181  
 INDEX CODE 742114

**GENERAL NOTES:**

- Existing utility lines and their location, as shown on the plans, represent the best information obtainable for design. The contractor will be required to work around existing utilities within the right-of-way which do not conflict with proposed construction.
- Rubble from the removal of miscellaneous structures and excess excavation which is to be wasted shall be disposed of on sites to be provided by the Contractor. These sites shall be approved by the Engineer as to suitability, appearance and site location. Locations that, in the opinion of the Engineer, will leave an unsightly appearance will not be approved.  
  
All disposal sites must be approved by the Kansas Department of Health and Environment. Material either stockpiled or disposed of in a flood plain would require a Kansas State Board of Agriculture permit. Any material dumped in waters of the United States or wetlands is subject to U.S. Corps. of Engineers permitting regulations. Any material buried or stockpiled beyond approved construction limits would require additional archaeological investigations unless buried in a previously approved borrow location.
- The Contractor shall be responsible for maintaining continuous flow of sewage through construction. Contractor's proposed method for maintaining sewage flow shall be approved by the Engineer. Cost of maintaining flow of sewage through construction will not be paid for directly and this cost shall be considered as subsidiary to the other pay items of the work.
- The Contractor shall be responsible for preserving property irons. The Contractor will be required to reestablish any property irons which are damaged or destroyed by his construction operations. Such irons shall be reestablished by a licensed land surveyor or a licensed professional engineer in accordance with state laws.
- Trees and shrubs in public right-of-way which are in direct conflict with proposed new construction shall be removed by the Contractor with the Engineer's approval. Trees and shrubs which are not in direct conflict with the proposed new construction shall be saved and protected from damage.
- Contractor shall vacuum test all manholes according to the City of Wichita standard specifications.
- The tops of all manholes to be set 0.3 feet above existing ground unless otherwise noted.
- The contractor shall provide temporary grass seeding on all disturbed easements at 250#/Acre.



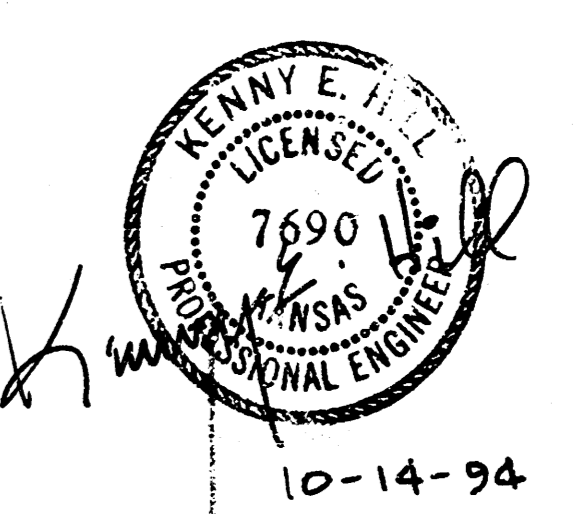
**INDEX**

TITLE SHEET	SHEET 1
LINE NO. 1	SHEET 2-3
TYPE "P" MANHOLE	SHEET 4
TYPE "C" MANHOLE	SHEET 5
GREAT PLAINS BUSINESS PARK 2ND ADDITION PLAT	SHEET 6

**BENCH MARKS**

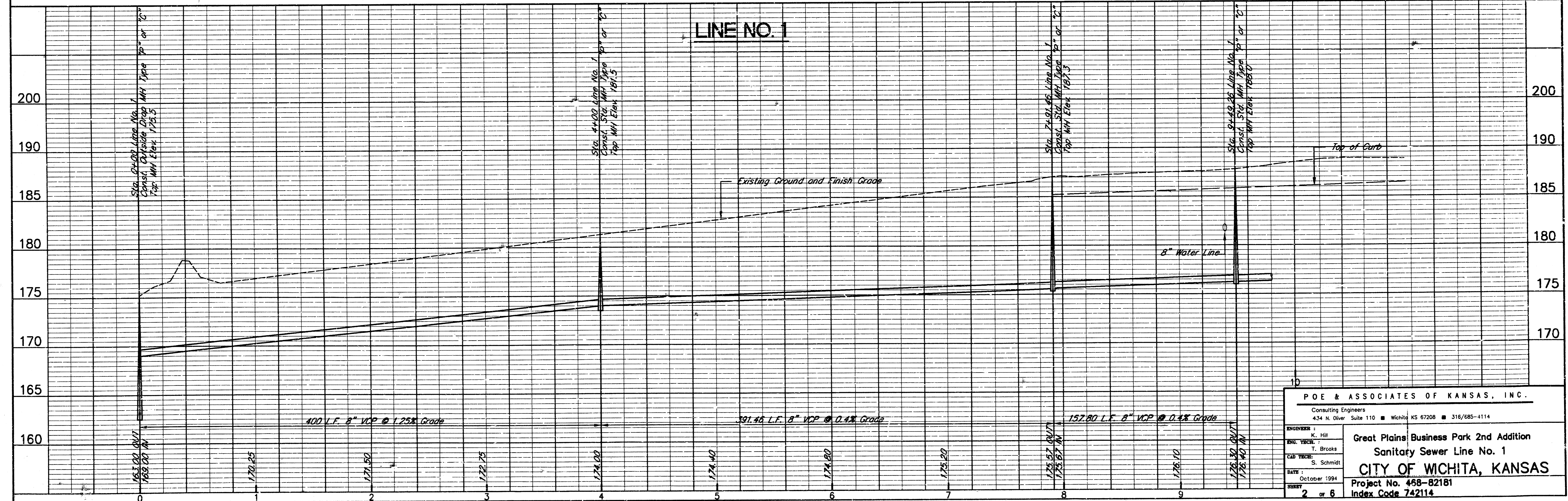
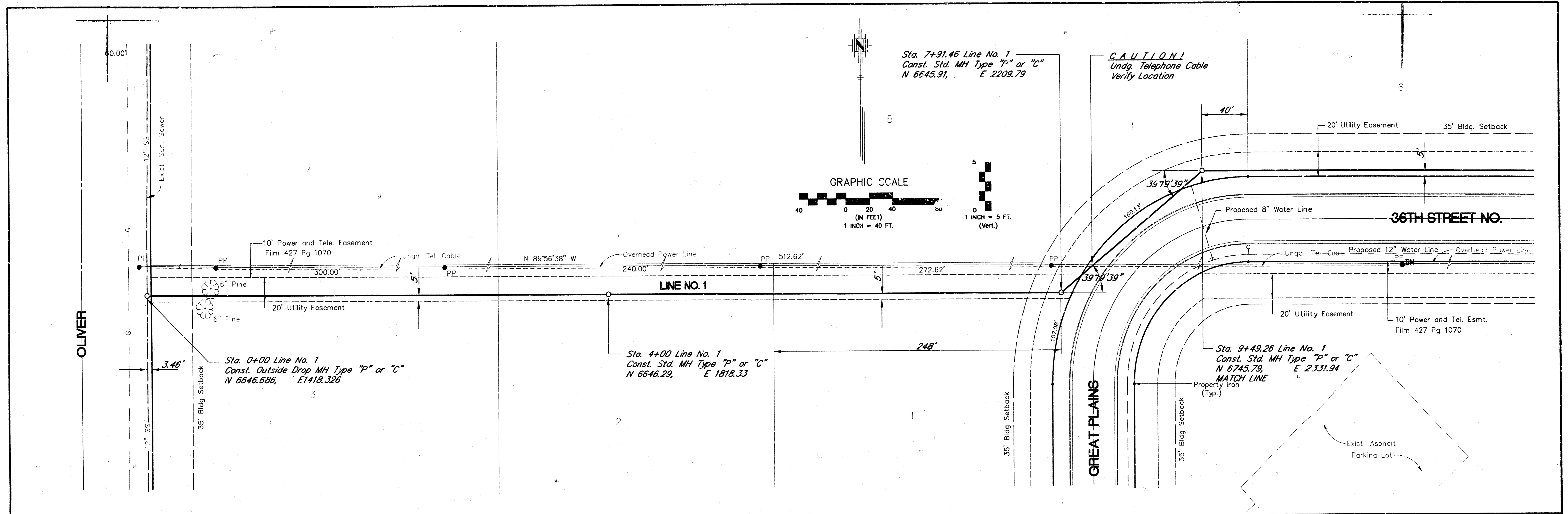
- (City of Wichita Datum)
- BM #1 City of Wichita Disc 29' S. and 30' E. of the W. 1/4 Cor. of Sec. 36, T26S, R1E Elev. 172.81
  - BM #2 "□" cut on Southeast Cor. of East Headwall of RCB 133' S. Railroad Elev. 172.81
  - BM #3 Spike in Southeast side of Power Pole 30' E. and 72' S. of the S.W. Cor. Lot 6, Block 1 Elev. 187.73

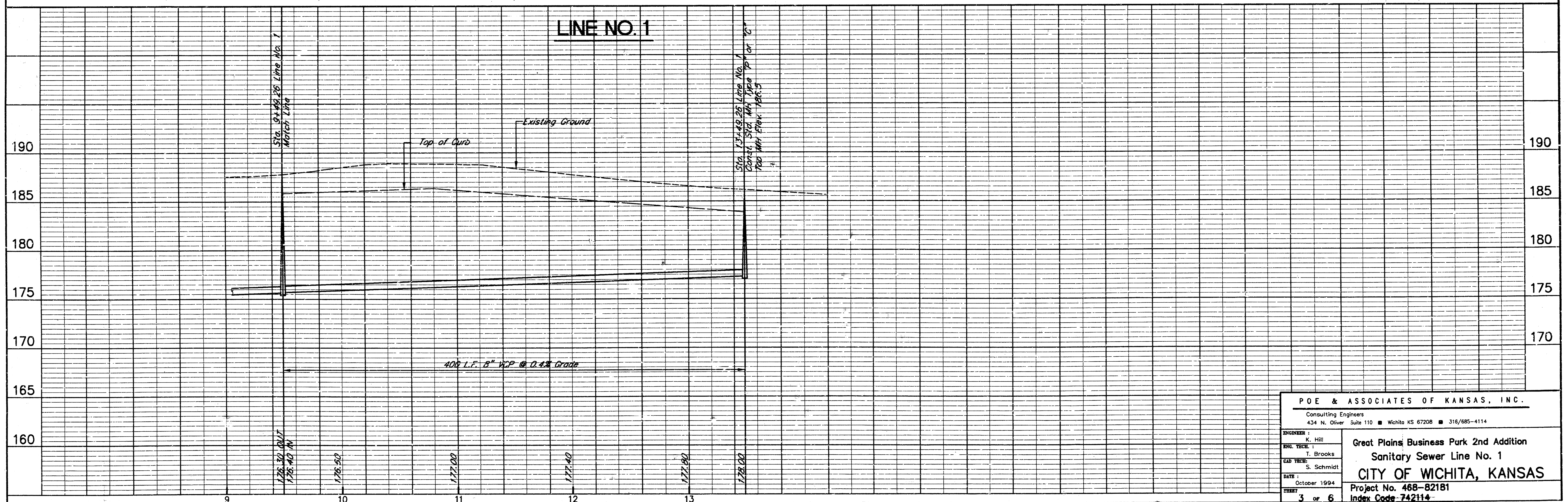
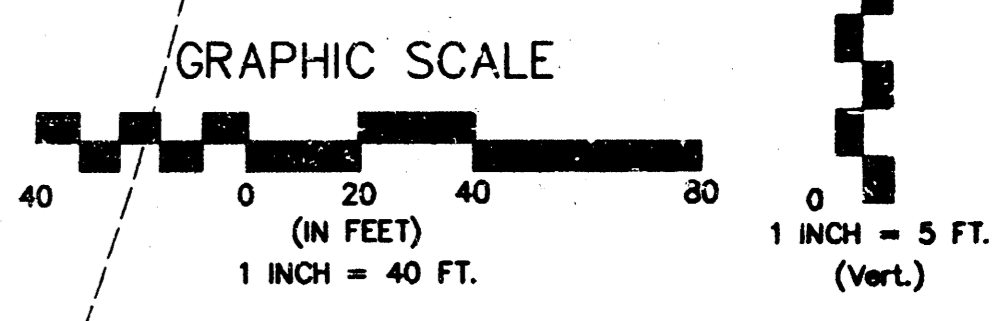
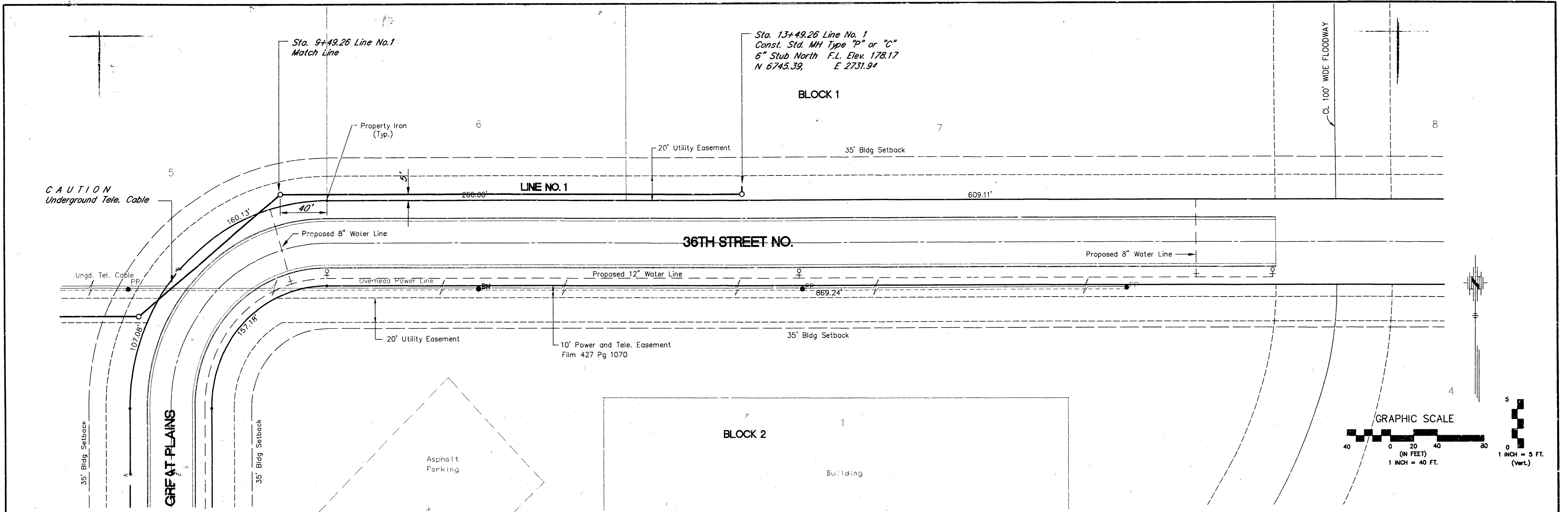
*Booked Per Plan 3/95*



**OCTOBER 1994**

PLANS PREPARED BY  
 POE & ASSOCIATES OF KANSAS, INC.  
 Consulting Engineers  
 434 N. Oliver Suite 110 Wichita KS 67208 316/685-4114





<b>P.O.E. &amp; ASSOCIATES OF KANSAS, INC.</b> Consulting Engineers 434 N. Oliver Suite 110 ■ Wichita KS 67208 ■ 316/685-4114	
ENGINEER: K. Hill SNO. CHECK: T. Brooks EAD. CHECK: S. Schmidt DATE: October 1994 SHEET: 3 of 6	<b>Great Plains Business Park 2nd Addition</b> <b>Sanitary Sewer Line No. 1</b> <b>CITY OF WICHITA, KANSAS</b> Project No. 468-82181 Index Code 742114

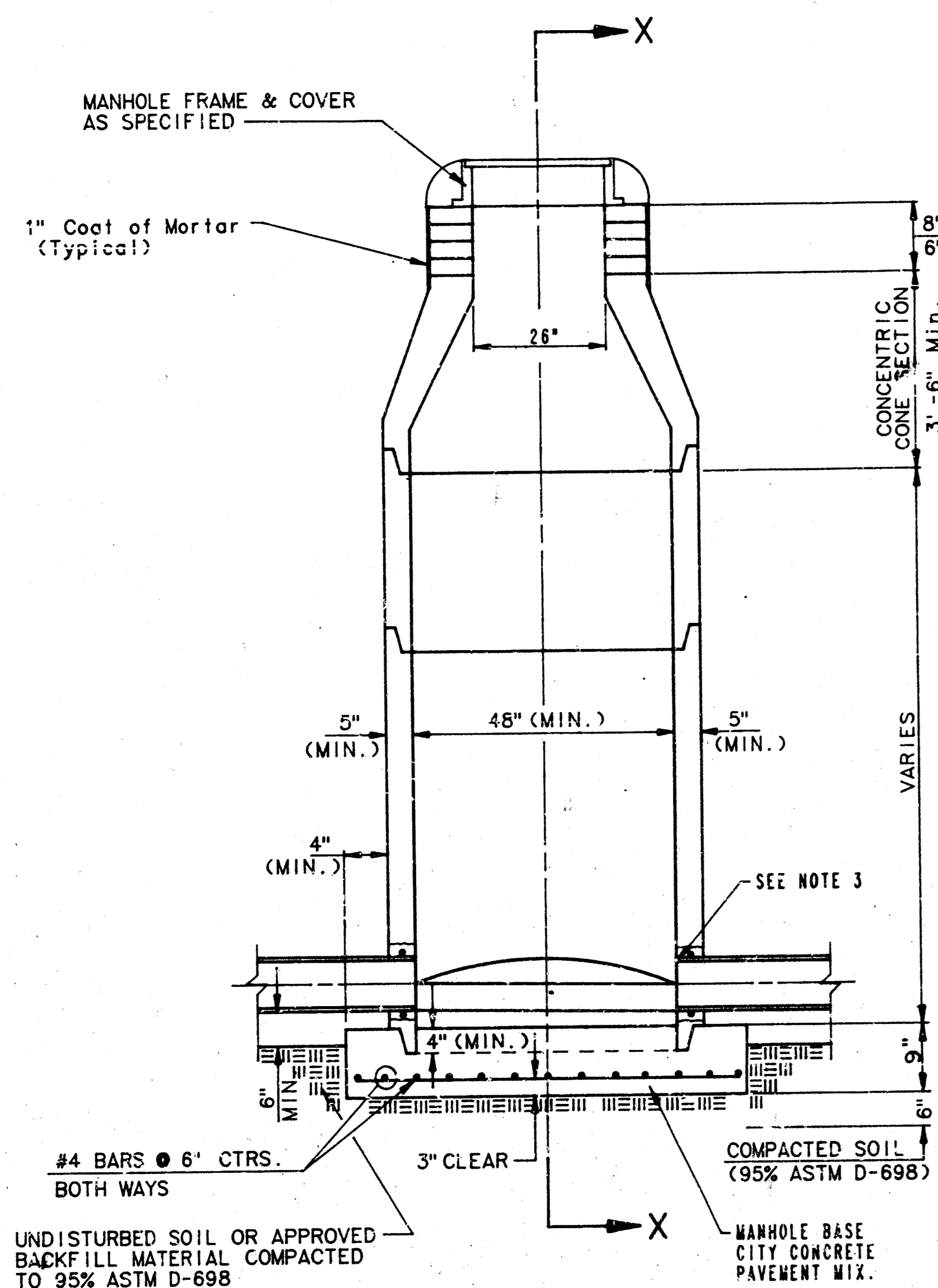
F:\APPS\DATA\1527\SS2 Fri Oct 14 11:27:00 1994 Jim Parsons Pae & Assoc.

# SEWER APPURTENANCES DETAILS

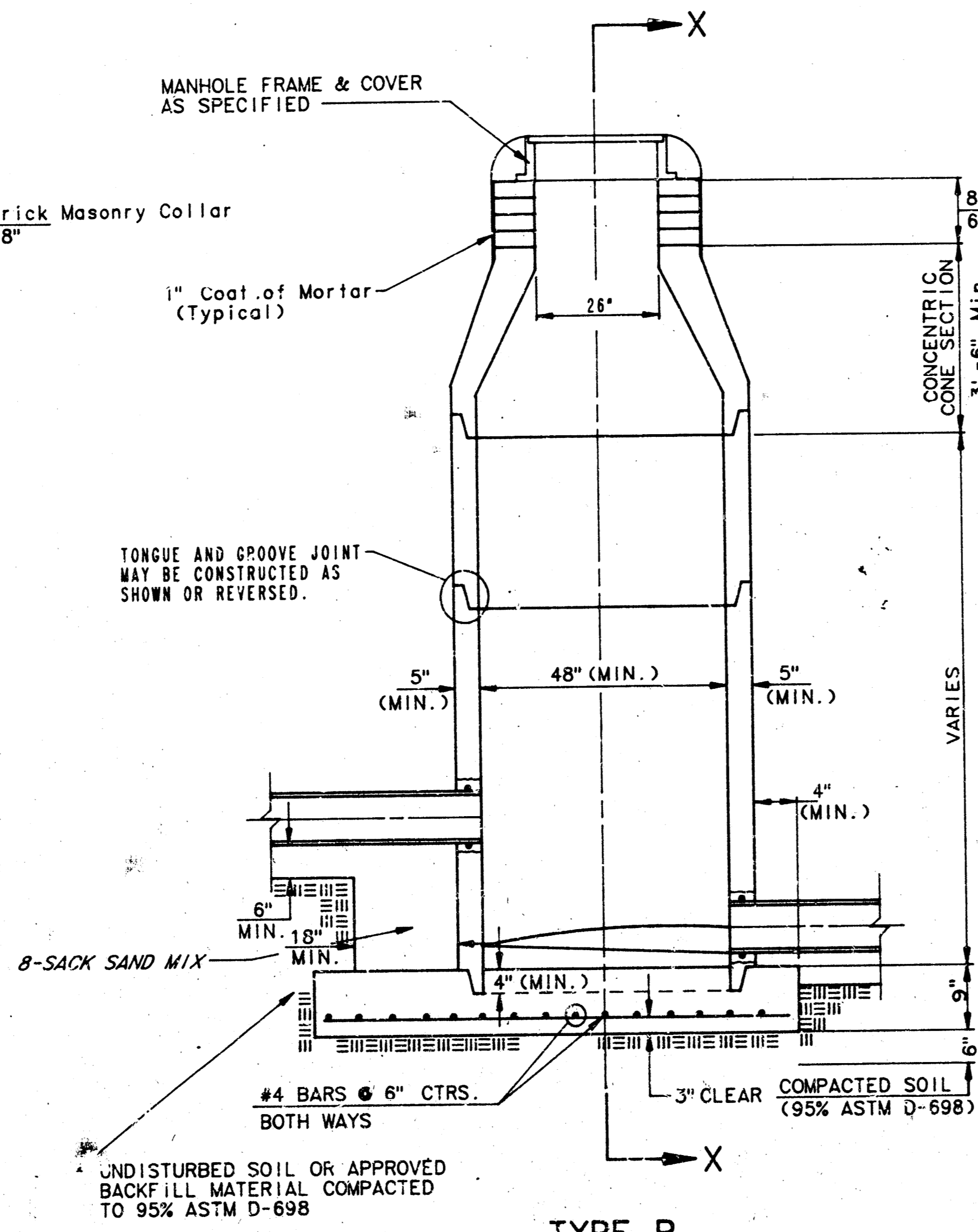
## ADOPTED AS STANDARD DESIGN

### BY

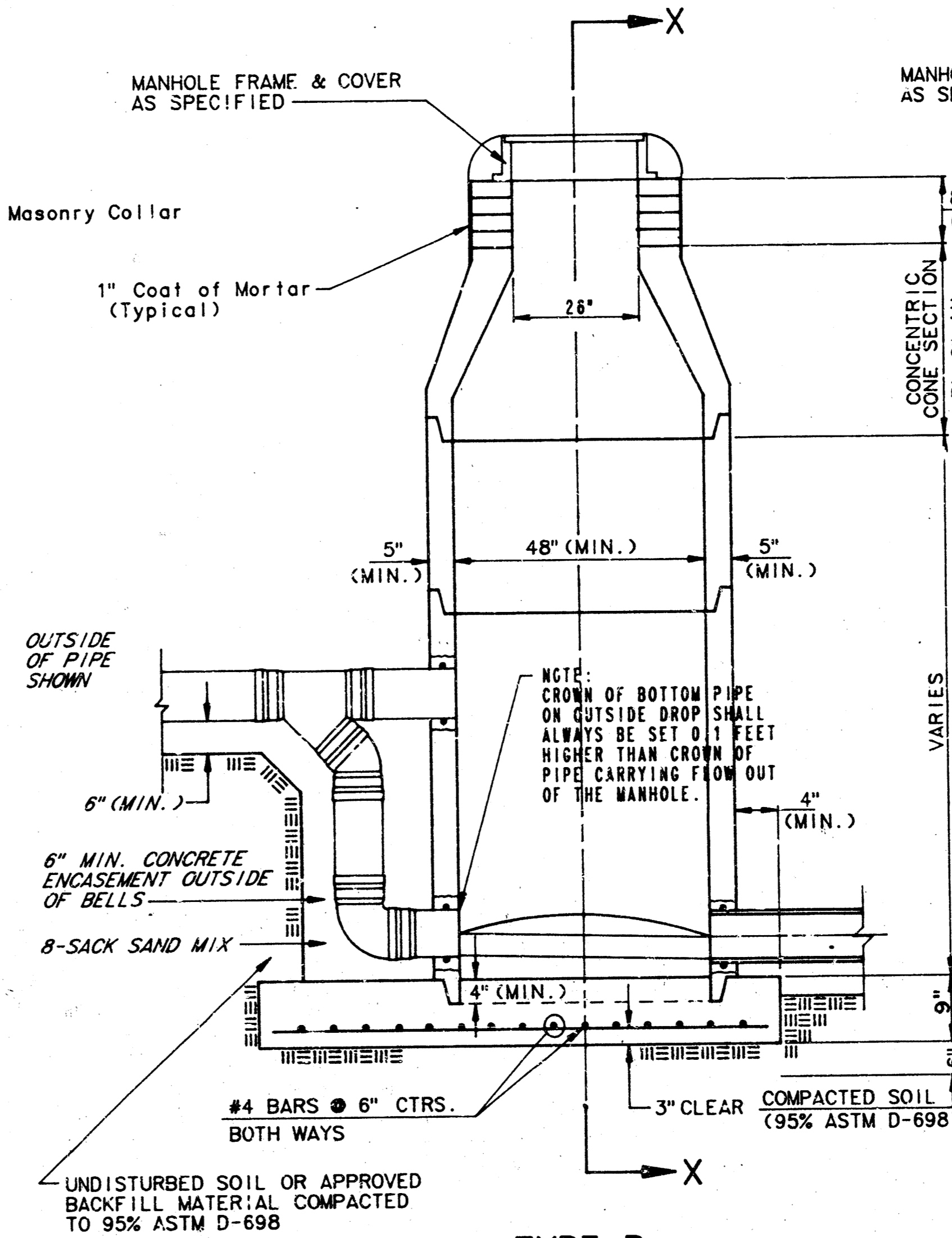
## CITY OF WICHITA



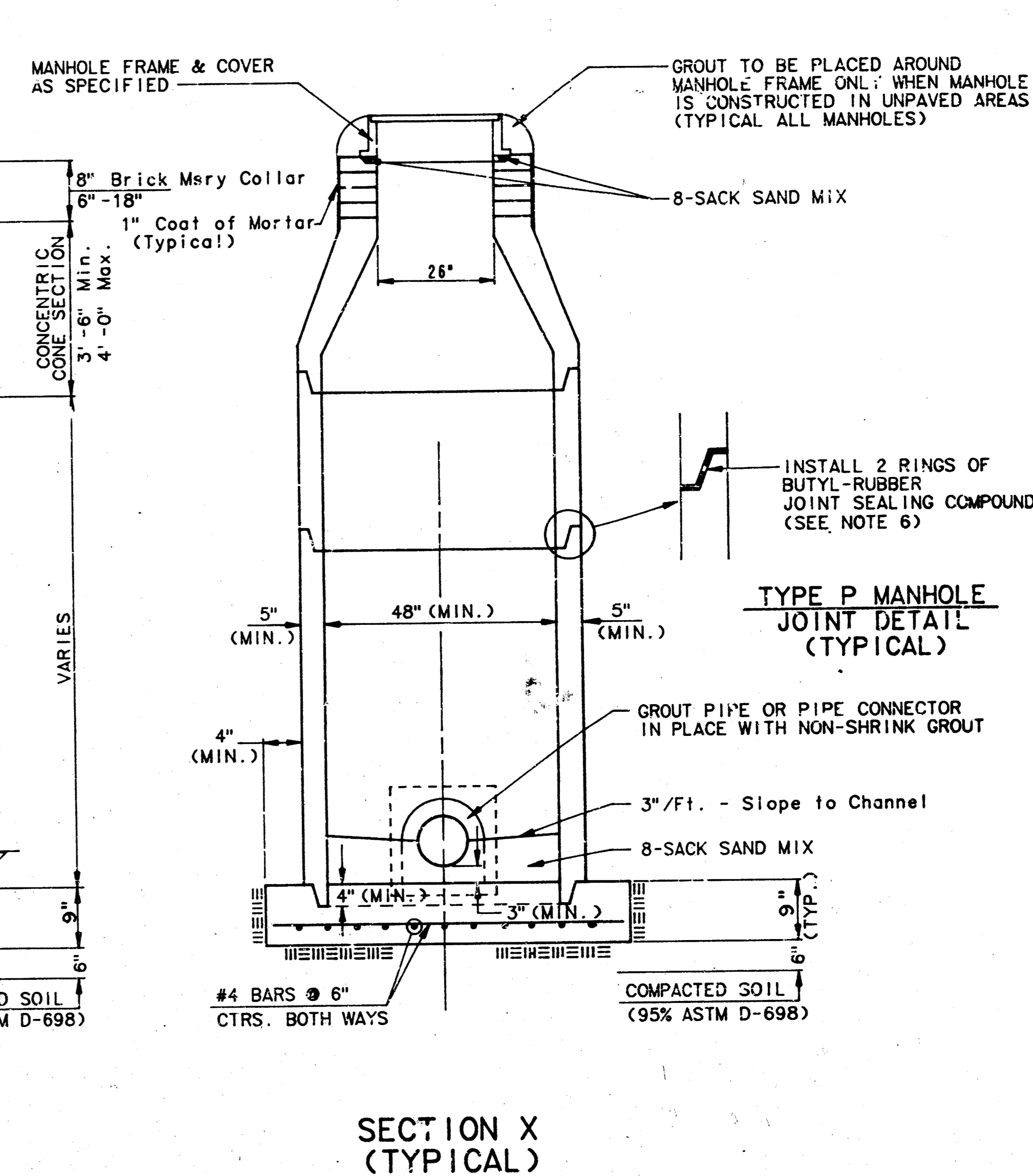
**TYPE P  
STANDARD MANHOLE**



**TYPE P  
INSIDE DROP MANHOLE**



**TYPE P  
OUTSIDE DROP MANHOLE**



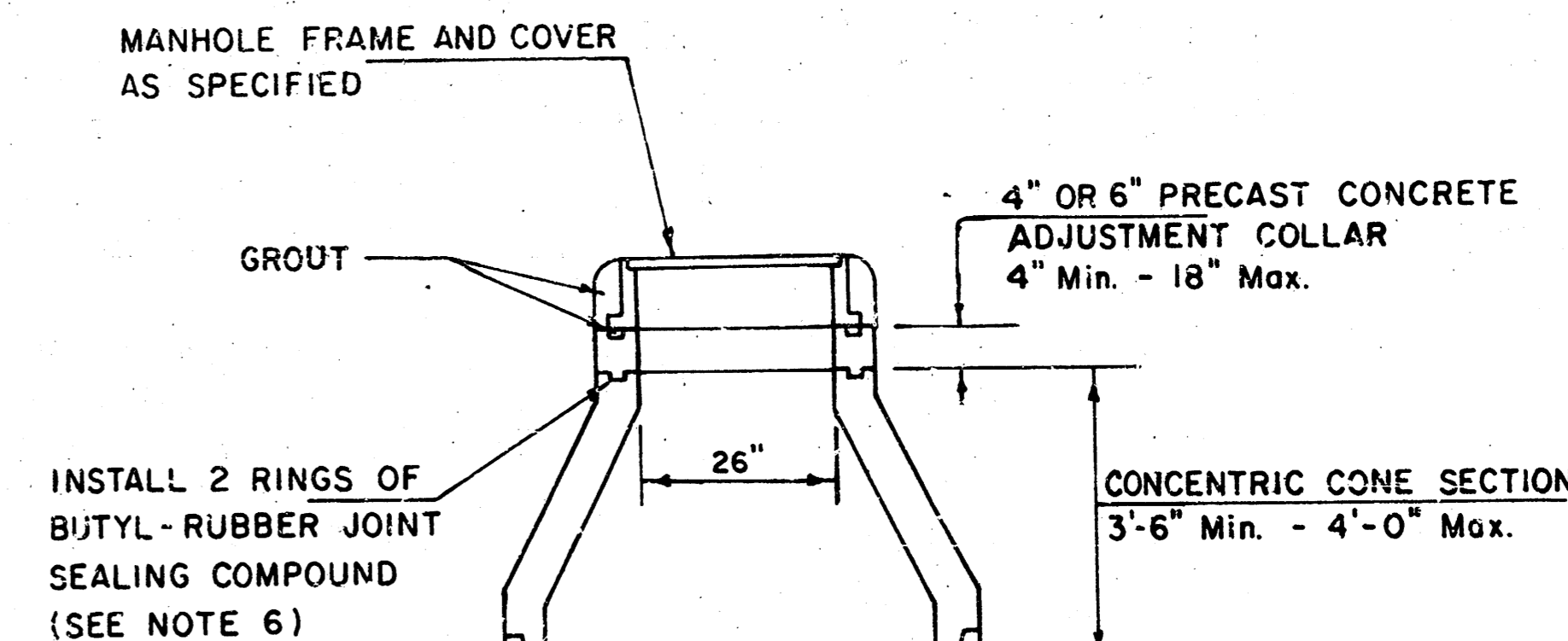
**SECTION X  
(TYPICAL)**

**GENERAL NOTES**  
PRECAST MANHOLE NOTES

1. ALL PRECAST CONCRETE MANHOLE SECTIONS SHALL CONFORM TO THE LATEST REVISION OF A.S.T.M. C478 AS MODIFIED BY THE SPECIFICATIONS.
2. NON-SHRINK GROUT SHALL BE NON-METALLIC TYPE.
3. APPROVED FLEXIBLE WATERSTOP GASKETS SHALL BE INSTALLED TO JOIN THE SEWER TO THE MANHOLE WALL WHEN A.B.S. COMPOSITE PIPE OR P.V.C. PIPE IS USED. FOR OTHER TYPES OF PIPE THE SEWER SHALL BE GROUTED IN PLACE WITH NON-SHRINK GROUT. THE SEWER PIPE SHALL BE SUPPORTED BY CONCRETE ENCASEMENT A MINIMUM OF 3 FEET FROM THE MANHOLE WALL AND TO THE FIRST JOINT FOR V.C.P. SUCH THAT THE JOINT REMAINS FLEXIBLE.
4. ALL INSIDE SURFACES OF THE CONCRETE MANHOLE WHICH WOULD BE EXPOSED TO SEWER GAS SHALL BE COATED WITH 2 COATS INEMEC SERIES 86 HI-BUILD EPOXYLINE, DRY THICKNESS OF 8 MILS (MIN.)
5. EXTERIOR MANHOLE WALLS SHALL BE COATED WITH 1 COAT MOBILARMA 633 BITUMINOUS COATING.
6. JOINT SEALING COMPOUND SHALL BE KENT SEAL NO. 2 OR APPROVED EQUAL.
7. PRECAST MANHOLES SHALL BE SET AT LEAST 4 INCHES INTO THE MANHOLE BASE.
8. 2" OF MANHOLE FLOOR SLAB SHALL BE AT LEAST 3 INCHES BELOW THE FLOW LINE OF THE OUTLET PIPE TO INSURE SUFFICIENT MINIMUM THICKNESS OF SHAPED INVERT.
9. LIFTING HOLES SHALL BE FILLED WITH NON-SHRINK GROUT AND THE INTERIOR SURFACE COATED AS SPECIFIED.
10. MORTAR USED IN MASONRY CONSTRUCTION SHALL CONTAIN 8 SACKS OF CEMENT PER CUBIC YARD. CONCRETE USED IN MANHOLE BASES SHALL CONFORM TO THE REQUIREMENTS OF CONCRETE FOR CONCRETE PAVEMENT CONSTRUCTION AS SPECIFIED IN THE CITY STANDARD PAVING SPECIFICATIONS USING CITY CONCRETE PAVEMENT MIX WITHOUT AIR ENTRAINING ADMIXTURE. MORTAR SHALL BE PLACED AROUND THE MANHOLE RINGS AS SHOWN ON THE DRAWINGS WHEN MANHOLES ARE CONSTRUCTED IN UNPAVED AREAS. MANHOLES CONSTRUCTED WHERE PIPE SIZES ARE SMALLER THAN 24" SHALL HAVE AN INSIDE DIAMETER OF 4". MANHOLES CONSTRUCTED WHERE PIPE SIZES ARE 24" OR LARGER SHALL HAVE AN INSIDE DIAMETER OF 5". COMPLETED MANHOLE SHALL BE WITHOUT LEAKS AND WATER TIGHT.

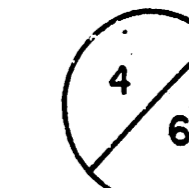
11. REINFORCING STEEL SHALL BE INSTALLED IN THE MANHOLE BASES AND SHALL CONSIST OF NO. 4 BARS PLACED ON 6" CENTERS IN BOTH DIRECTIONS. THE MANHOLE BASE REINFORCEMENT SHALL BE PLACED AT LEAST 3" ABOVE THE BOTTOM OF THE MANHOLE BASE. ALL COSTS FOR FURNISHING AND INSTALLING REINFORCING STEEL SHALL BE INCLUDED IN THE UNIT PRICE BID FOR THE MANHOLE.
12. OPENINGS SHALL BE CUT INTO THE MANHOLE WALL WHEN OUTSIDE DROPS ARE CONSTRUCTED ON EXISTING MANHOLES. SUCH OPENINGS CUT INTO EXISTING MANHOLES SHALL BE AS SMALL AS PRACTICAL TO FACILITATE INSTALLING AND GROUTING THE NEW PIPE IN PLACE. WATERSTOP GASKETS SHALL BE USED WITH P.V.C. AND A.B.S. COMPOSITE PIPE. THE NEW PIPE SHALL BE GROUTED INTO THE OPENING USING AN APPROVED NONSHRINK GROUT FOR THE FULL MANHOLE WALL THICKNESS. THE EXTERIOR OF THE COMPLETED CONNECTION SHALL BE SEALED WITH AN APPROVED BITUMINOUS COATING SUCH THAT THE CONNECTION WILL BE WATER TIGHT. FLOOR OF MANHOLE SHALL BE MODIFIED TO FORM NEW FLOW CHANNEL FOR THE NEW CONNECTION AS INDICATED BY THE DRAWING. THIS WORK, INCLUDING MODIFICATION OF MANHOLE FLOOR, SHALL BE PAID FOR AT THE UNIT PRICE BID FOR OUTSIDE DROP STACK CONSTRUCTED ON EXISTING MANHOLE.
13. THE FLOORS OF ALL MANHOLES SHALL BE SHAPED WITH FLOW CHANNELS SUCH THAT THE MANHOLES WILL BE SELF-CLEANING AND FREE OF AREAS WHERE SOLIDS COULD BE DEPOSITED AS SEWAGE FLOWS THROUGH THE MANHOLE FROM ALL INLET PIPES. THE OUTLET PIPE. FLOW CHANNELS SHALL BE FORMED TO MATCH THE BOTTOM HALVES OF THE INFLOWING PIPES AND THE OUTFLOWING PIPE AS SHOWN BY THE DRAWINGS EXCEPT FOR INSIDE DROP MANHOLES. FLOW CHANNELS FOR INSIDE DROP MANHOLES SHALL BE CONSTRUCTED AS INDICATED BY THE DRAWING. MANHOLE FLOORS SHALL HAVE SLOPES OF 3 INCHES PER FOOT IN THE AREAS OUTSIDE OF THE FLOW CHANNELS SLOPED TOWARD THE FLOW CHANNELS. PIPES LAID THROUGH MANHOLES SHALL HAVE THE TOP HALF REMOVED TO NEAT LINES FOR THE FULL INSIDE DIAMETER OF THE MANHOLE. MANHOLE FLOORS SHALL THEN BE SHAPED AROUND THE BOTTOM HALF OF THE PIPE WHICH FORMS THE FLOW CHANNEL.
14. PIPES INSTALLED WITHIN THE EXCAVATION MADE FOR THE MANHOLE SHALL BE CRADLED WITH CONCRETE TO THE LIMITS OF THE MANHOLE EXCAVATION. WHEN CLAY PIPE IS USED, THE CRADLE SHALL EXTEND TO THE FIRST JOINT OUTSIDE THE MANHOLE. THE CRADLE SHALL BE TERMINATED AT THE CLAY PIPE JOINT IN A MANNER WHICH WILL MAINTAIN THE FLEXIBILITY OF THE JOINT. COST OF CRADLE WITHIN MANHOLE EXCAVATION OR TO CLAY PIPE JOINTS ADJACENT TO MANHOLE SHALL BE INCLUDED IN THE UNIT PRICE BID FOR THE MANHOLE.

15. MANHOLE COVER CASTINGS AND MANHOLE FRAME CASTINGS SHALL CONFORM TO THE REQUIREMENTS AS INDICATED IN THE STANDARD SPECIFICATIONS AND AS SHOWN IN THE STANDARD DETAIL DRAWING.
16. THE VERTICAL FREE FALL DROP INSIDE MANHOLES SHALL NOT EXCEED 2'. THE CROWNS OF INFLOWING PIPES SHALL NEVER BE SET LOWER THAN THE CROWN OF THE OUTFLOWING PIPE.
17. STANDARD MANHOLES AND STANDARD INSIDE DROP MANHOLES SHALL BE BID AS STANDARD MANHOLES FOR THE TYPE AND DIAMETER INDICATED. OUTSIDE DROP MANHOLES SHALL BE BID AS STANDARD OUTSIDE DROP MANHOLES FOR THE TYPE AND DIAMETER INDICATED. ALL MANHOLE DIAMETERS WILL BE 4" UNLESS INDICATED OTHERWISE.
18. A BRICK MASONRY COLLAR SHALL BE INSTALLED BETWEEN THE CAST IRON FRAME AND THE CONCENTRIC CONE. THE COLLAR WILL HAVE 8" WALLS AND A VERTICAL HEIGHT OF 6" MINIMUM AND 18" MAXIMUM. A 1" COAT OF MORTAR WILL BE PLASTERED ON THE OUTSIDE OF THE COLLAR.



**ALTERNATE CONSTRUCTION  
IN UNPAVED AREAS**

GREAT PLAINS BUSINESS  
PARK 2nd ADDITION  
PROJ. No. 468-82181  
INDEX CODE 742114  
NOTE NO. 16 REVISED JAN. 1991  
Revised 3-21-89  
Revised 8-10-88  
Revised: June 12, 1985



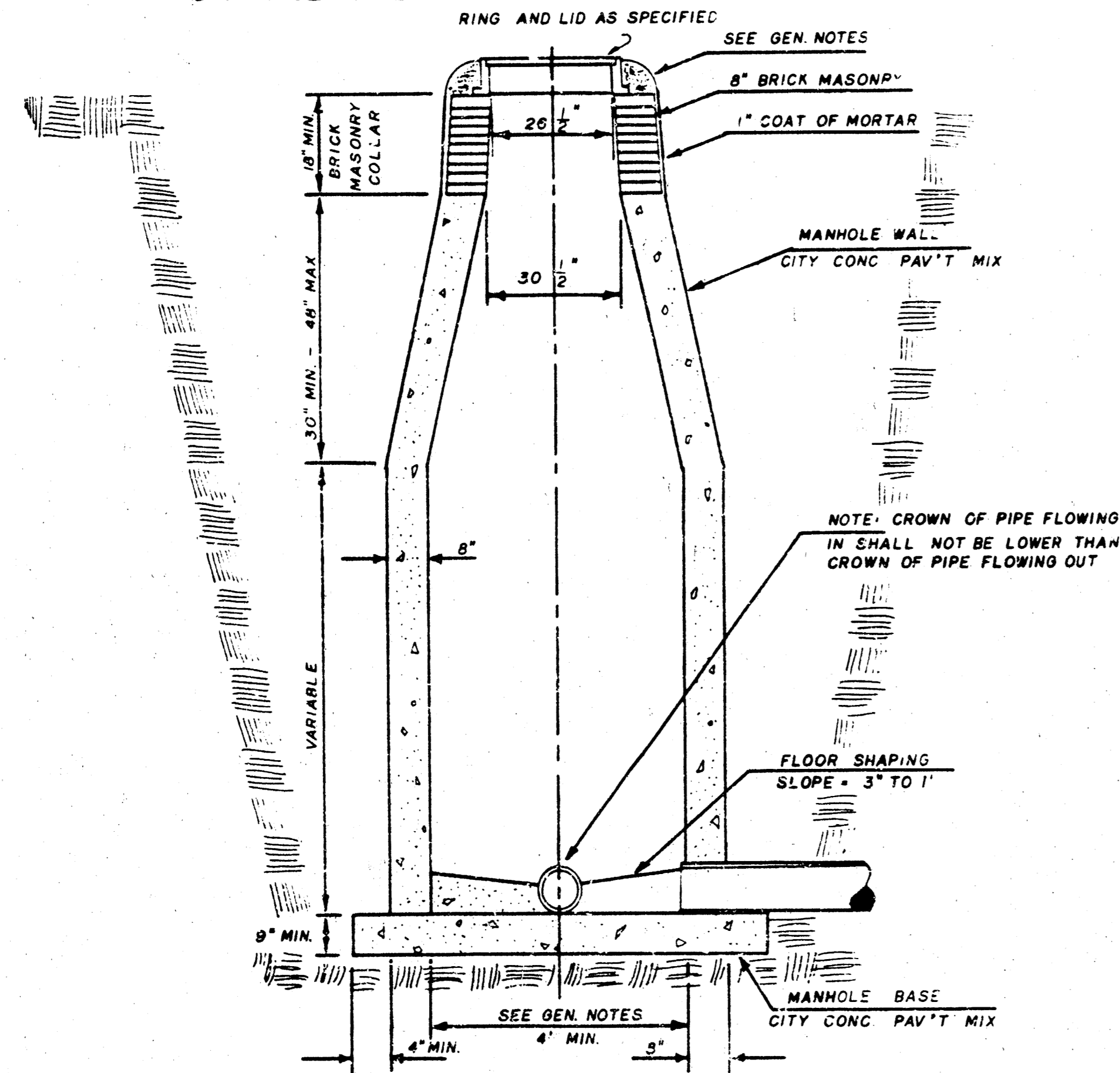
# SEWER APPURTENANCES DETAILS

ADOPTED AS STANDARD DESIGN

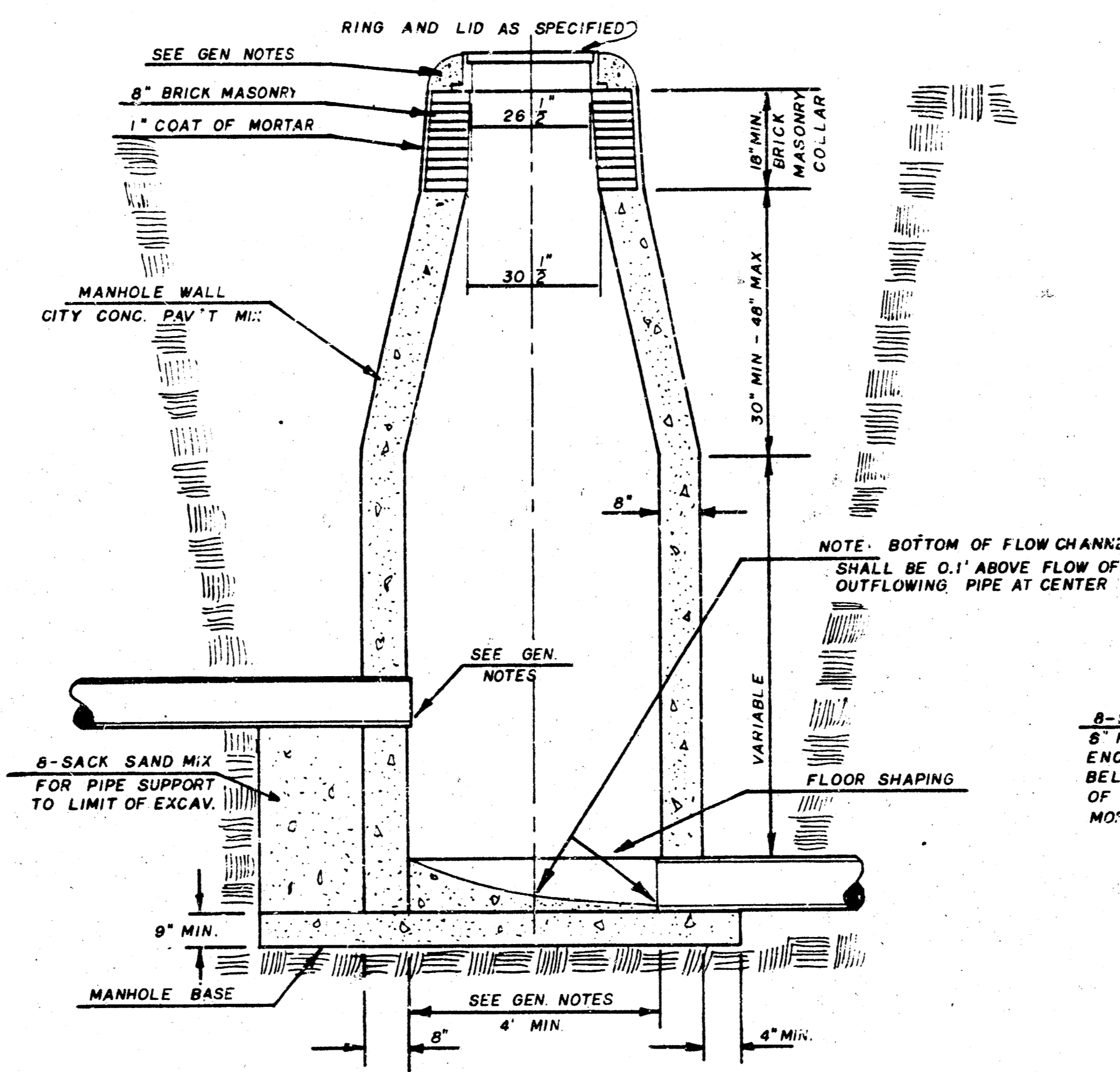
BY

City of Wichita, Kansas

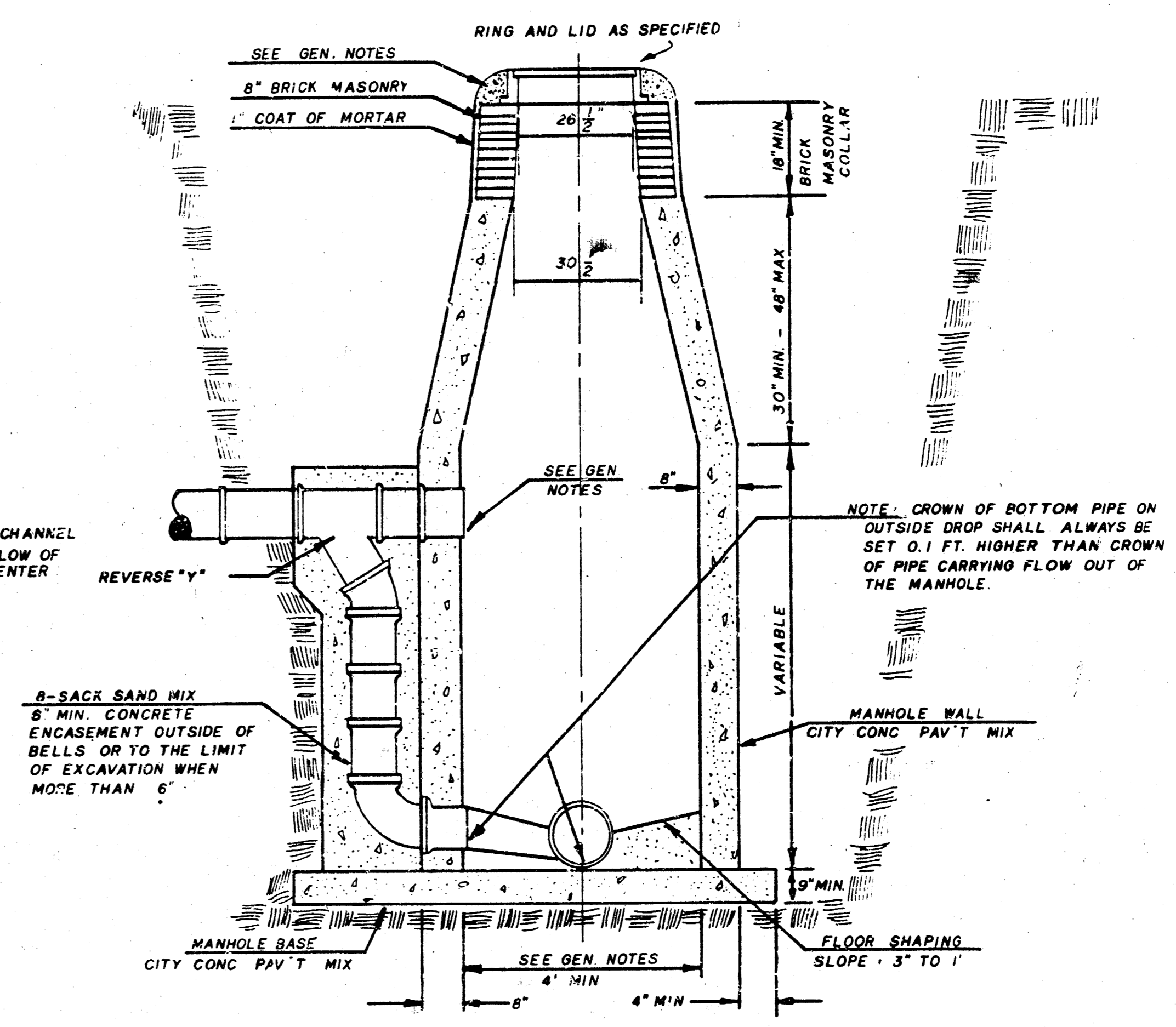
STANDARD MANHOLE TYPE "C"



INSIDE DROP MANHOLE TYPE "C"



OUTSIDE DROP MANHOLE TYPE "C"

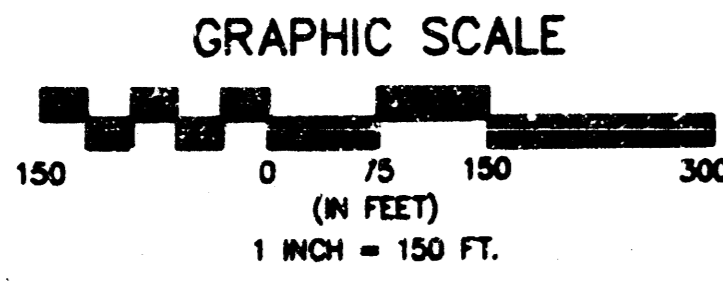
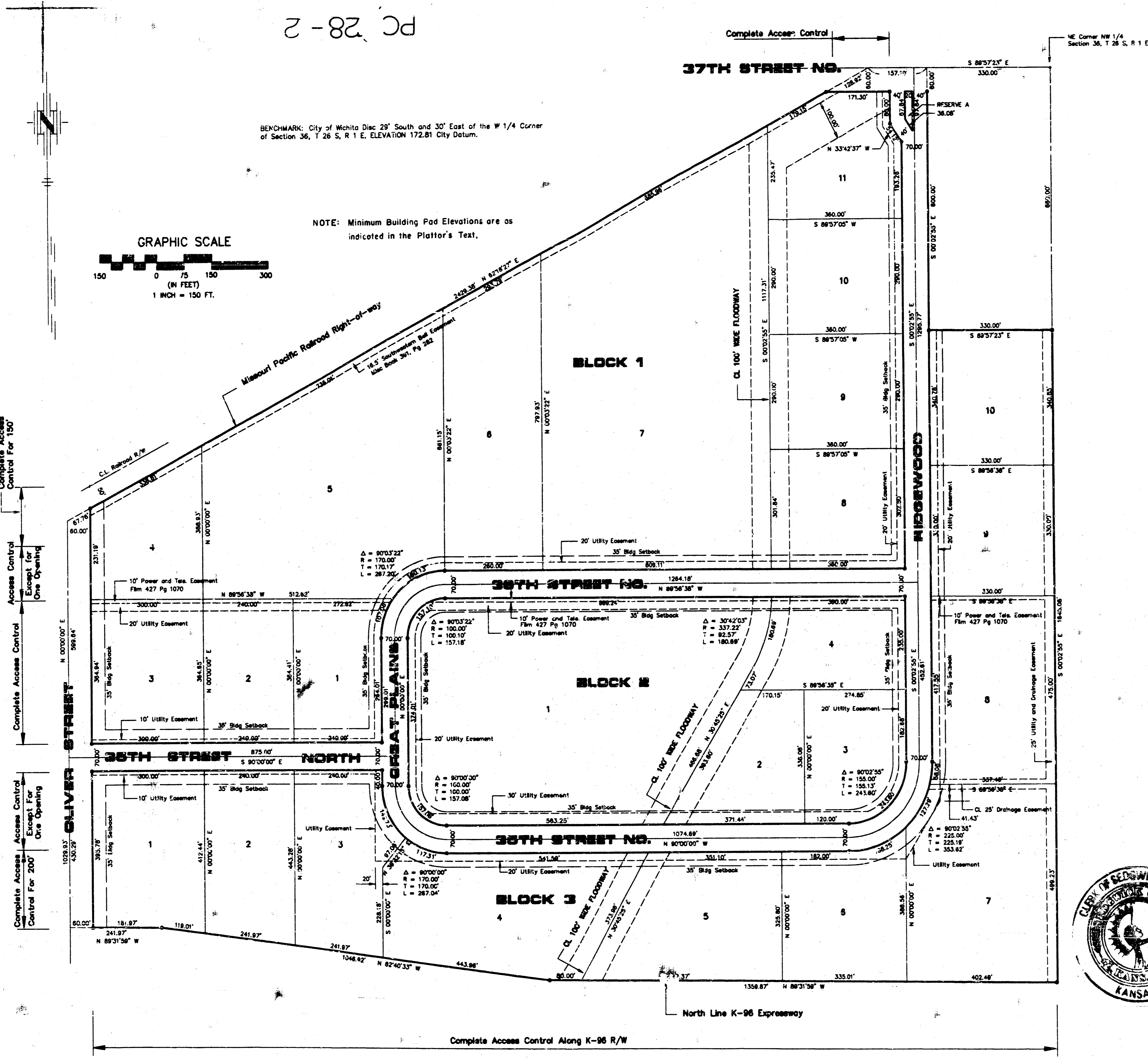


GENERAL NOTES

- MORTAR USED IN MASONRY CONSTRUCTION SHALL CONTAIN 8 BAGS OF CEMENT PER CUBIC YARD. CONCRETE USED IN MANHOLE WALLS AND BASES SHALL CONFORM TO THE REQUIREMENTS OF CONCRETE FOR CONCRETE PAVEMENT CONSTRUCTION AS SPECIFIED IN THE CITY STANDARD PAVING SPECIFICATIONS USING CITY CONCRETE PAVEMENT MIX WITHOUT AIR ENTRAINING ADMIXTURE. MORTAR SHALL BE PLACED AROUND THE MANHOLE RING AS SHOWN ON THE DRAWINGS WHEN MANHOLES ARE CONSTRUCTED IN UNPAVED AREAS. TYPE "C" MANHOLES CAN BE CONSTRUCTED ONLY WHERE PIPE SIZES ARE 8" OR SMALLER. THE INSIDE DIAMETER OF TYPE "C" MANHOLES SHALL BE 4'. COMPLETED MANHOLE SHALL BE WITHOUT LEAKS AND WATER TIGHT.
- REINFORCING STEEL SHALL BE INSTALLED IN THE MANHOLE BASE. REINFORCING STEEL SHALL CONSIST OF NO. 4 BARS PLACED ON 6" CENTERS IN BOTH DIRECTIONS. REINFORCING STEEL SHALL BE PLACED 6" ABOVE THE BOTTOM OF THE MANHOLE BASE. COST OF FURNISHING AND INSTALLING REINFORCING STEEL SHALL BE INCLUDED IN THE UNIT PRICE BID FOR THE MANHOLE.
- AN OPENING SHALL BE CUT IN THE MANHOLE WALL FOR THE UPPER INLET PIPE FOR INSIDE AND OUTSIDE DROP MANHOLES. THE UPPER INLET PIPE SHALL BE GROUTED INTO THIS OPENING WITH NON-SHRINKING GROUT. THE EXTERIOR OF THIS COMPLETED CONNECTION SHALL BE SEALED WITH AN APPROVED BITUMINOUS COATING SUCH THAT THE CONNECTION WILL BE WATER TIGHT.
- THE FLOORS OF ALL MANHOLES SHALL BE SHAPED WITH FLOW CHANNELS SUCH THAT THE MANHOLES WILL BE SELF-CLEANING AND FREE OF AREAS WHERE SOLIDS COULD BE DEPOSITED AS SEWAGE FLOWS THROUGH THE MANHOLE FROM ALL INLET PIPES TO THE OUTLET PIPE. FLOW CHANNELS SHALL BE FORMED TO MATCH THE BOTTOM HALVES OF THE INFLUING PIPES AND THE OUTFLOWING PIPE AS SHOWN BY THE DRAWINGS EXCEPT FOR INSIDE DROP MANHOLES. FLOW CHANNELS FOR INSIDE DROP MANHOLES SHALL BE CONSTRUCTED AS INDICATED BY THE DRAWINGS. MANHOLE FLOORS SHALL HAVE SLOPES OF 3 INCHES PER FOOT IN THE AREAS OUTSIDE OF THE FLOW CHANNELS SLOPED TOWARD THE FLOW CHANNELS. PIPES LAID THROUGH MANHOLES SHALL HAVE THE TOP HALF REMOVED TO NEAT LINES FOR THE FULL INSIDE DIAMETER OF THE MANHOLE. MANHOLE FLOORS SHALL THEN BE SHAPED AROUND THE BOTTOM HALF OF THE PIPE WHICH FORMS THE FLOW CHANNEL.
- PIPES INSTALLED WITHIN THE EXCAVATION MADE FOR THE MANHOLE SHALL BE CRADLED WITH CONCRETE TO THE LIMITS OF THE MANHOLE EXCAVATION. WHEN CLAY PIPE IS USED, THE CRADLE SHALL EXTEND TO THE "FIRST JOINT" OUTSIDE THE MANHOLE. THE CRADLE SHALL BE TERMINATED AT THE CLAY PIPE JOINT IN A MANNER WHICH WILL MAINTAIN THE FLEXIBILITY OF THE JOINT. COST OF CRADLE WITHIN MANHOLE EXCAVATION OR TO CLAY PIPE JOINTS ADJACENT TO MANHOLE SHALL BE INCLUDED IN THE UNIT PRICE BID FOR THE MANHOLE.
- MANHOLE COVER CASTINGS AND MANHOLE FRAME CASTINGS SHALL CONFORM TO THE REQUIREMENTS AS INDICATED IN THE STANDARD SPECIFICATIONS AND AS SHOWN IN THE STANDARD DETAIL DRAWINGS.
- THE VERTICAL FREE FALL INSIDE MANHOLES SHALL NOT EXCEED 2'. THE CROWN OF INFLUING PIPES SHALL NEVER BE SET LOWER THAN THE CROWN OF THE OUTFLOWING PIPE.
- STANDARD MANHOLES TYPE "C" AND STANDARD INSIDE DROP MANHOLES TYPE "C" SHALL BE BID AS STANDARD MANHOLES FOR THE TYPE AND DIAMETER INDICATED. OUTSIDE DROP MANHOLES TYPE "C" SHALL BE BID AS STANDARD OUTSIDE DROP MANHOLES FOR THE TYPE AND DIAMETER INDICATED. ALL MANHOLE DIAMETERS WILL BE 4' UNLESS INDICATED OTHERWISE.

GREAT PLAINS BUSINESS  
PARK 2nd ADDITION  
PROJ. No. 468-82181  
INDEX CODE 742114  
NOTE NO. 7 REVISED JAN. 1991

PC 28-2



NOTE: Minimum Building Pad Elevations are as indicated in the Platitor's Text.

BENCHMARK: City of Wichita Disc 28" South and 30" East of the W 1/4 Corner of Section 36, T 28 S, R 1 E, ELEVATION 172.81 City Datum.

STATE OF KANSAS, COUNTY OF SEDGWICK: ss.

I, Kenny E. Hill, being a duly licensed Land Surveyor in said County and State, do hereby certify that I have been in responsible charge of surveying and plotting "GREAT PLAINS BUSINESS PARK 2ND ADDITION" to Wichita, Kansas, being described as follows:

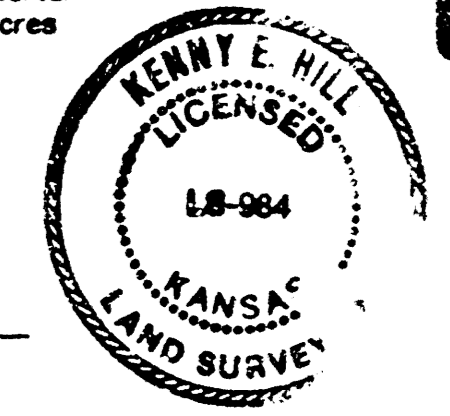
A replat of North Oliver Industrial Park Addition, an adjacent tract and Great Plains Business Park Addition being more particularly described as follows:

Commencing at the Northeast corner of the Northwest Quarter (NW 1/4) of Section 36, Township 28 South, Range 1 East of the 6th P.M. Sedgwick County, Kansas; thence N 89° 57' 23" W along the North line of said Northwest Quarter (NW 1/4) for a distance of 330.00 feet to the point of beginning; thence S 0° 02' 55" E for a distance of 660.00 feet to the Southeast corner of Town and Country Christian Church Addition; thence S 89° 57' 23" E for a distance of 330.00 feet to the Southeast corner of Town and Country Christian Church Addition; thence S 0° 02' 55" E for a distance of 1645.08 feet on the East line of the Northwest Quarter (NW 1/4) of said Section 36 to a point on the North line of the K-96 Expressway Right-of-Way; thence N 89° 57' 23" W for a distance of 1359.87 feet on the North line of said Expressway; thence N 82° 40' 33" W for a distance of 1046.92 feet on the North line of said Expressway; thence N 89° 57' 23" W for a distance of 241.97 feet on the North line of said Expressway extended, to a point on the West line of the Northwest Quarter (NW 1/4) of said Section 36; thence N 0° 00' 00" E for a distance of 1029.93 feet; thence N 62° 18' 27" E along the South line of the Missouri Pacific Railroad Right-of-Way for a distance of 2429.38 feet to a point on the North line of the Northwest Quarter (NW 1/4) of said Section 36; thence S 89° 57' 23" E for a distance of 157.10 feet to the point of beginning, containing 103.96 acres more or less. Easements and other public reservations are hereby vacated to conform to those shown on this plat by virtue of KSA 12-512(a) as amended.

The accompanying plat is a true and correct exhibit of properly surveyed.

Dated this 21st day of July, 1991.

*Kenny E. Hill*  
Kenny E. Hill, L.S.



KNOW ALL MEN BY THESE PRESENTS:

That we, the undersigned, have caused the land described in the Surveyor's Certificate to be platted into lots, blocks, streets and a reserve. The streets are hereby dedicated to and for the use of the public. Easements are hereby granted as indicated for the construction and maintenance of drainage and utilities. The reserve is to be owned and maintained by the owners of Lot 1, Block 2, Great Plains Business Park 2nd Addition. All abutting rights of access to or from Oliver Street, 37th Street North and K-96 Expressway over and across the North line of Lot 11, Block 1, the South line of Lots 1 through 7, Block 3, the West line of Lot 1, Block 3, except for one opening in the North 195 feet, the West line of Lot 3 and 4, Block 1, except for one opening to Lot 4 being a minimum of 150.00 feet south of the centerline of the Missouri Pacific Railroad right-of-way are hereby granted to the appropriate governing body. The roadway shall be the responsibility of the adjacent property owners until such time as the governing body exercising jurisdiction elects to assume responsibility for maintenance and improvement of the drainage, provided further that no building shall be constructed on or within said roadway, nor shall any fill, change of grade, creation of channel or any other work be carried on without the permission of the Wichita-Valley Center Flood Control office or their successors of office. A minimum building pad elevation on City of Wichita Datum shall be maintained on the following lots, Lot 3, Block 1, elevation 178.0, Lots 4 and 5, Block 1, elevation 178.5, the North 1/2 of Lot 7 and all of Lot 10, Block 1, elevation 185.0, the South 1/2 of Lot 7 and all of Lots 8 and 9, Block 1, elevation 183.0, Lot 11, Block 1, elevation 187.0, Lots 1, 2 and 4, Block 2, elevation 179.0, Lots 4 and 5, Block 3, elevation 176.5. Minimum building pads are referencing floor elevations.

The City of Bel Aire, Kansas

Great Plains Ventures, Inc.

*Harold Smith*  
Harold Smith, Mayor

*Kenneth W. Rix*  
Kenneth W. Rix, Vice-President

*Sherry L. Cutter*  
Attest: Sherry L. Cutter, City Clerk

STATE OF KANSAS, COUNTY OF SEDGWICK: ss.

This instrument was acknowledged before me on this 3rd day of February, 1992, by Kenneth W. Rix, Harold Smith and Sherry L. Cutter.

2-22-95  
12-22-95  
My Appointment Expires:

*Betty L. Martine*  
Notary Public BETTY L. MARTINE

This plat of GREAT PLAINS BUSINESS PARK 2ND ADDITION to Wichita, Sedgwick County, Kansas has been submitted to and approved by the WICHITA-SEDGWICK COUNTY METROPOLITAN AREA PLANNING COMMISSION, Wichita, Kansas.

Dated this 21st day of July, 1991.



*George D. Sherman*  
George D. Sherman, Chairman

*Marvin S. Xirout*  
Marvin S. Xirout, Secretary

This plat approved and all dedications shown hereon accepted by the City Council of the City of Wichita, Kansas, this 25th day of February, 1992.

*Bob Knight*  
Bob Knight, Mayor

*Pet Burnett*  
Pet Burnett, Deputy City Clerk

Entered on transfer record this 31st day of March, 1992.

*Don Wright*  
Don Wright, County Clerk

This is to certify that this instrument was filed for record in the Register of Deeds Office at 3:00 A.M. on the 31st day of March, 1992.

*Pat Kettler*  
Pat Kettler, Register of Deeds

*Ed Resa*  
Ed Resa, Chief Deputy



# GREAT PLAINS BUSINESS PARK 2ND ADDITION

TO WICHITA, SEDGWICK COUNTY, KANSAS

GREAT PLAINS BUSINESS PARK 2nd ADDITION  
PROJ. No. 468-82181  
INDEX CODE 742114  
1e-t-3-2

PC 28-2

