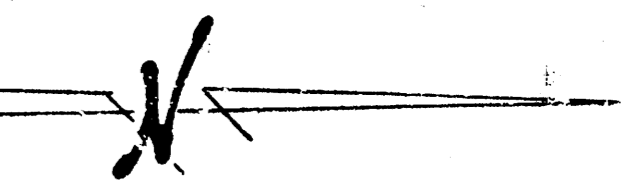
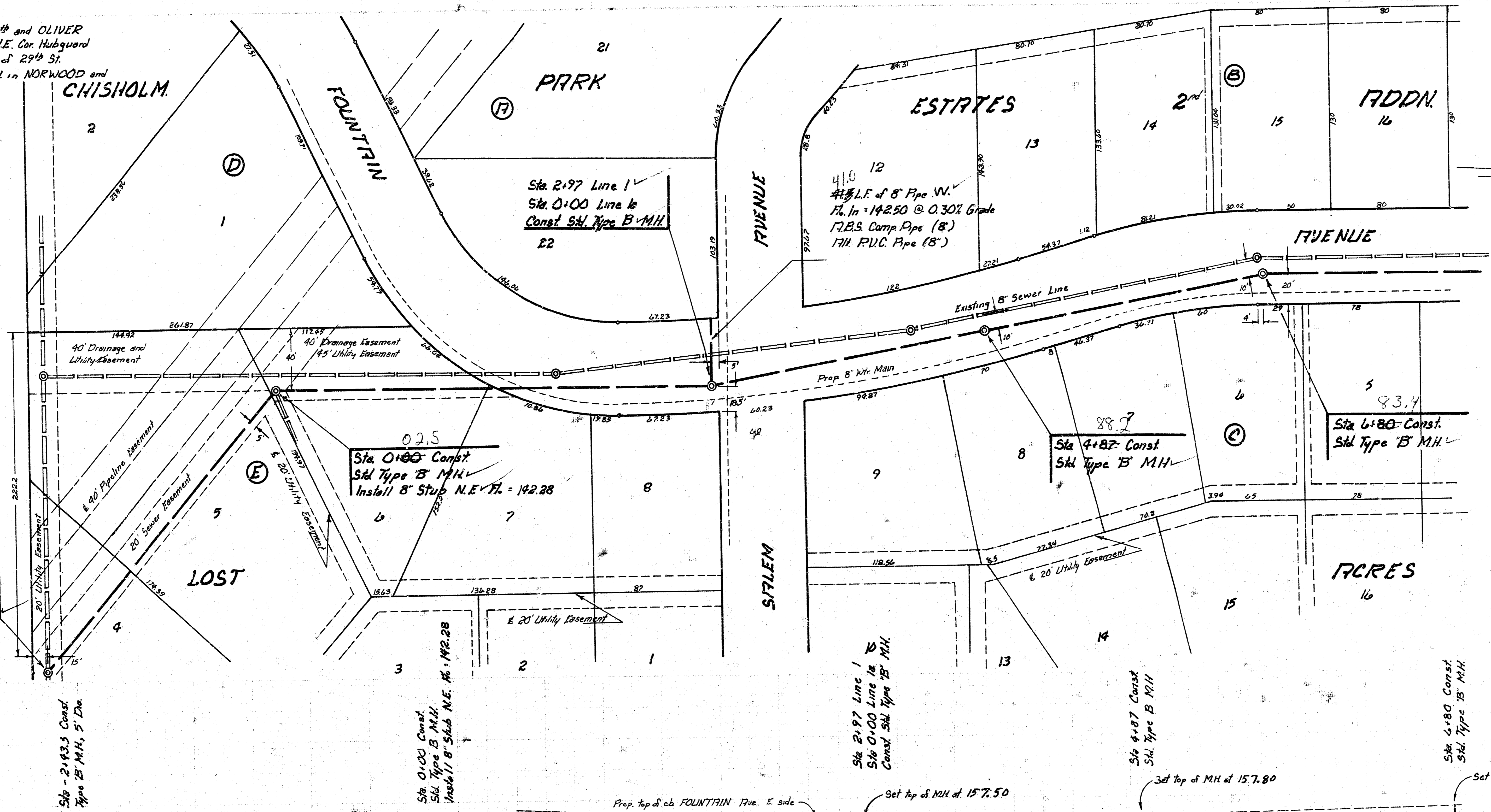
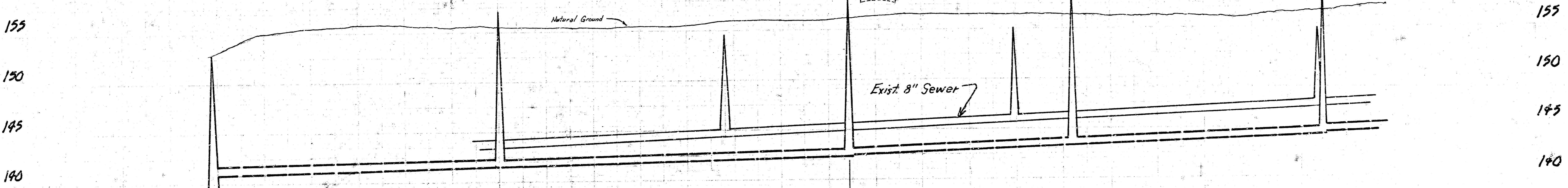


B.M. 158.84 City Sht. 29th and OLIVER
 B.M. 160.10 Brass Sht. N.E. Cor. Hubguard
 2nd Bridge N. of 29th St.
 B.M. 158.45 S. Rim of M.H. in NORWOOD and
 FOUNTAIN



SCALE
 Plan 1" = 40'
 Profile 1" = 40'
 Horiz. 1" = 40'
 Vert. 1" = 5'



940.5 L.F. of 10" R.B.S. Composite Pipe @ 0.25% Grade
 R/H. P.V.C. Pipe
 R/H. Clay Pipe

870 L.F. of 10" R.B.S. Composite Pipe @ 0.20% Grade
 R/H. P.V.C. Pipe
 R/H. 10" Clay Pipe

Set top of M.H. at 157.50
 Set top of M.H. at 157.80
 Set top of M.H. at 158.50

1326.6 Ht. Out
 140.80 Ht. In
 140.97

141.22

141.97 Ht. Out
 141.57 Ht. In

141.82

142.07

142.31 Ht. Out
 142.41 Ht. In

142.93

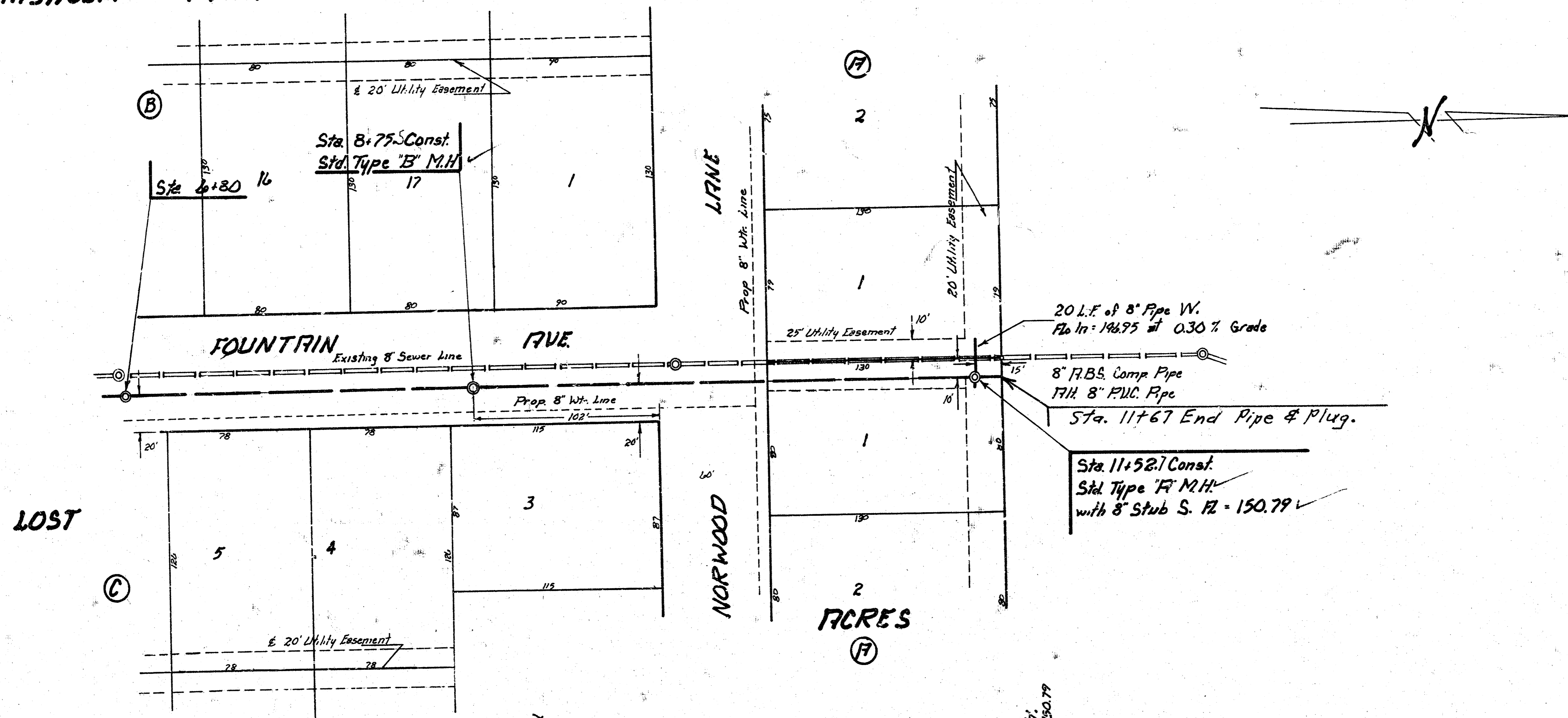
143.36 Ht. Out
 143.45 Ht. In

143.93

144.38 Ht. Out
 144.45 Ht. In

As Built
 1/8"

CHISHOLM PARK ESTATES 2nd ADDN.



SCALE
 Plan 1" = 40'
 Profile 1" = 40'
 Vert. 1" = 5'

