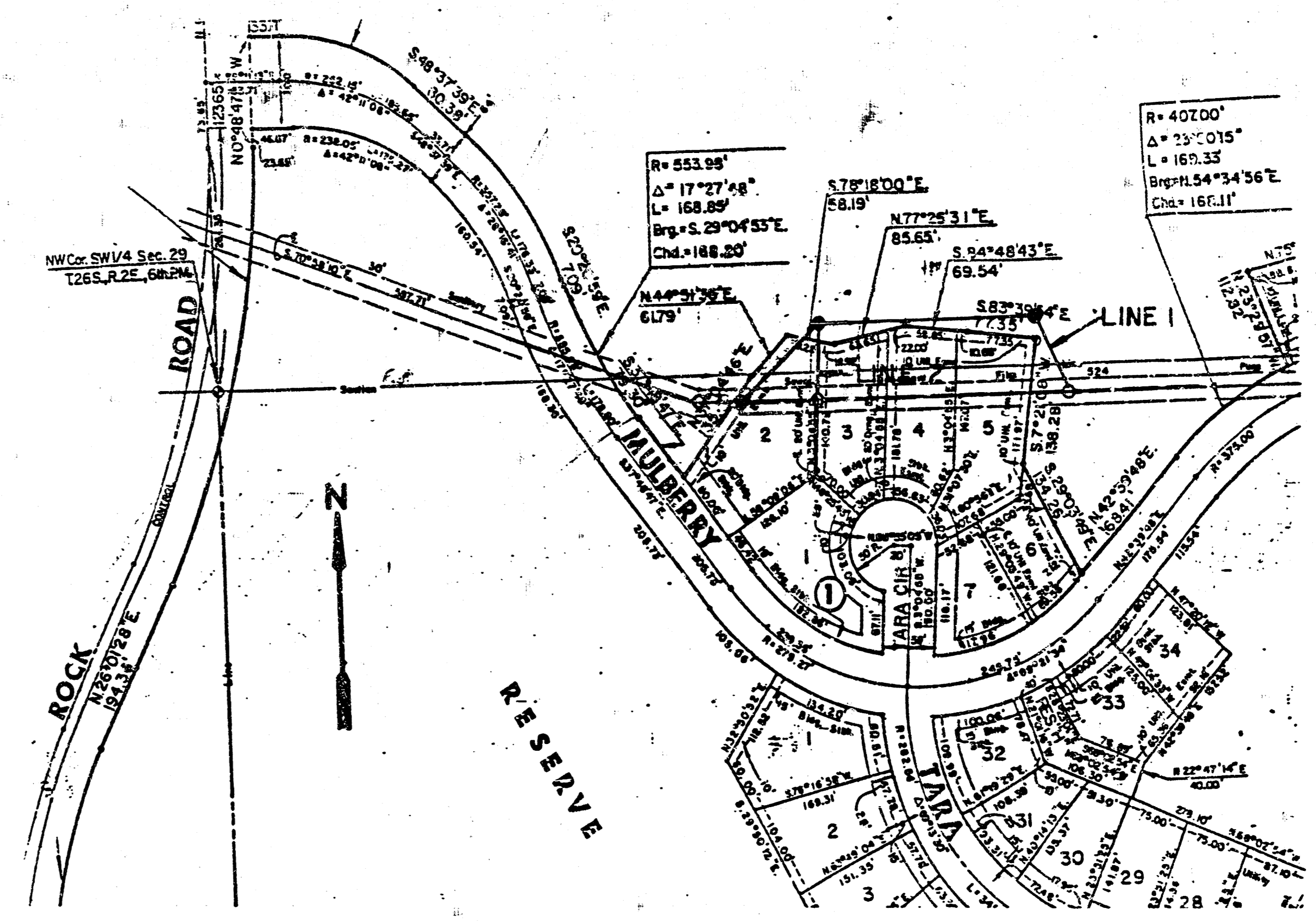
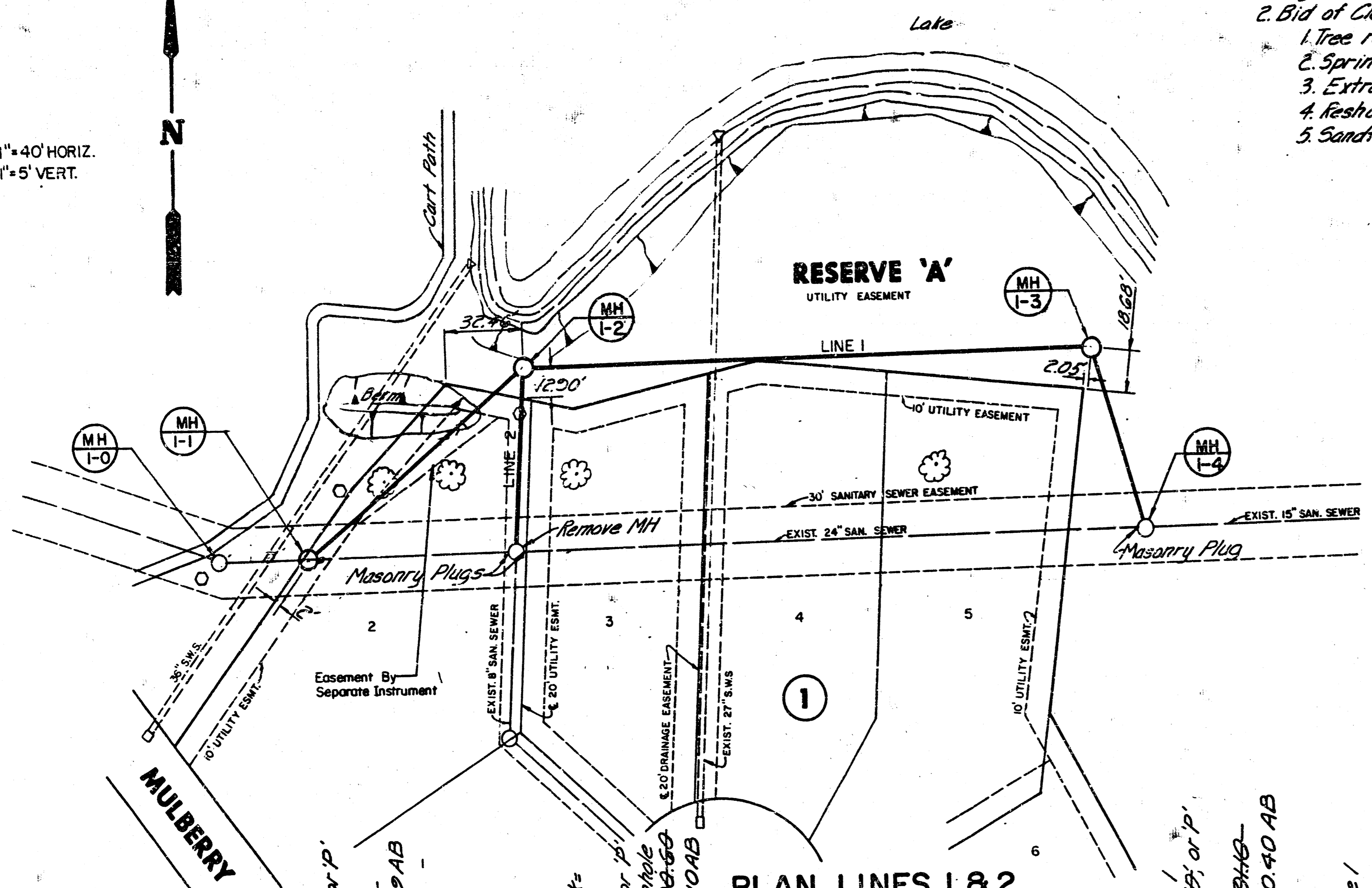


RELOCATION OF A PORTION OF
 MAIN 9, SANITARY SEWER 23
 PROJ. NO. 46876245-80001-000-000-088

- Notes: 1. Rim & Cover from Abandoned MH may be used on a New MH.
 2. Bid of Clearing R/W Shall Include:
 1. Tree removal if required.
 2. Sprinkler system removal & replacement
 3. Extra work crossing 21" S.W.S.
 4. Reshaping floor of MH 1-A.
 5. Sandfill & Plug Abandoned Sewer.

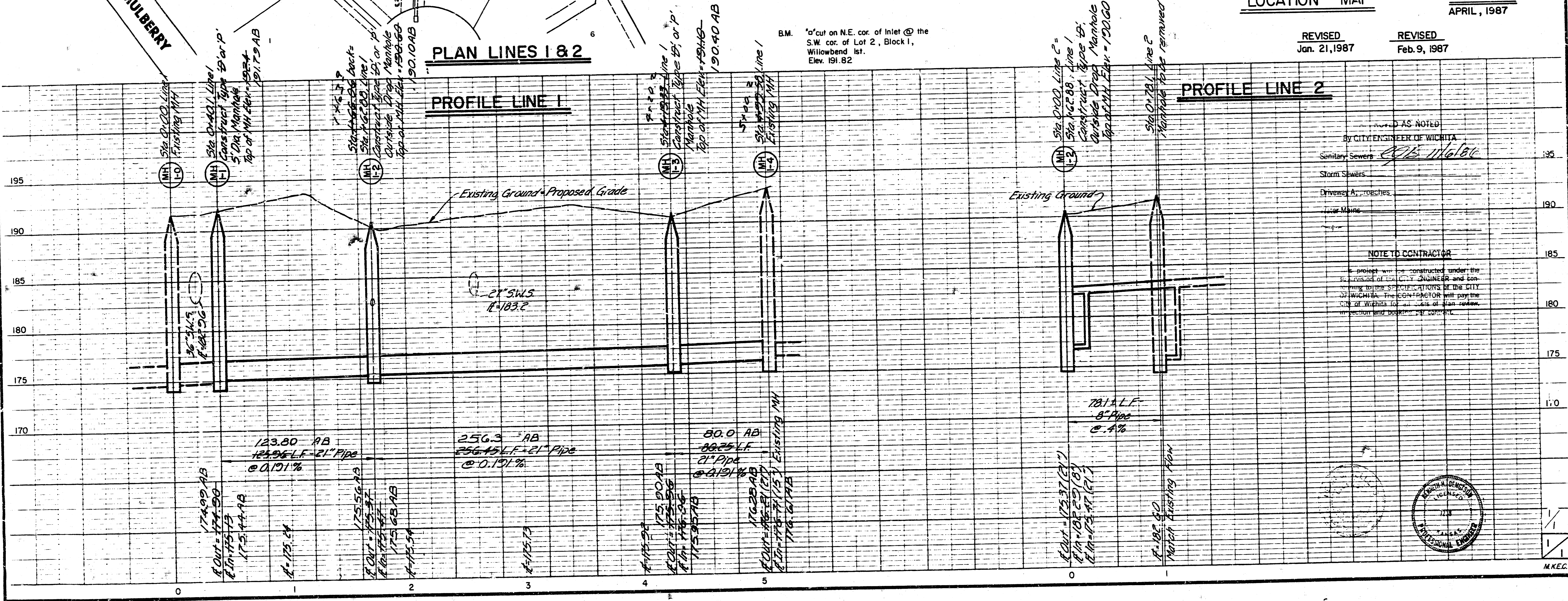
1. Verify elevation of existing 8" sewer on Line 2 @ 0+78.1 before laying Line 2.
 2. Reconstruction of berm and reseeding by others.

SCALE: 1"=40' HORIZ.
 1"=5' VERT.



LOCATION MAP
 AS BUILT
 APRIL, 1987

REVISED
 Jan. 21, 1987
 REVISED
 Feb. 9, 1987



REVISIONS:
 1. Verify elevation of existing 8" sewer on Line 2 @ 0+78.1 before laying Line 2.
 2. Reconstruction of berm and reseeding by others.

NOTE TO CONTRACTOR
 This project will be constructed under the supervision of the CITY ENGINEER and conforming to the SPECIFICATIONS of the CITY OF WICHITA. The CONTRACTOR will pay the cost of Wichita for all tests of soil, rock, inspection and boring. SEE CONTRACT.



FILMED FROM THE BEST
 AVAILABLE COPY