

SANITARY SEWER PLANS

WILLOWBEND NORTH ADDITION

LATERAL 55, MAIN 9, SANITARY SEWER 23

PROJECT NO. 468-82712

INDEX CODE 743153

GENERAL NOTES

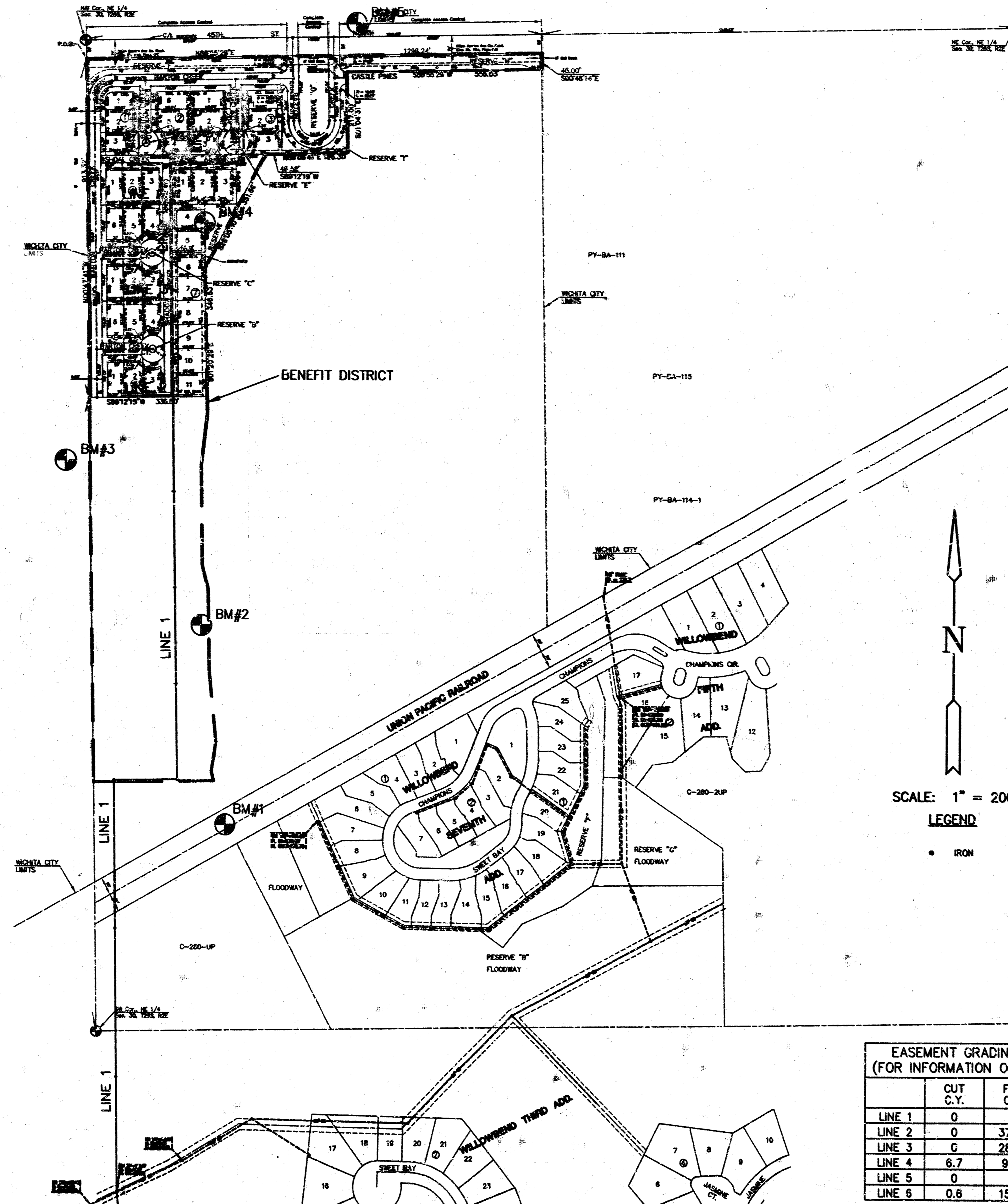
1. THE CONTRACTOR SHALL BE RESPONSIBLE FOR PRESERVING PROPERTY IRONS. THE CONTRACTOR WILL BE REQUIRED TO RE-ESTABLISH ANY PROPERTY IRONS WHICH ARE DAMAGED OR DESTROYED BY HIS CONSTRUCTION OPERATIONS. SUCH IRONS SHALL BE RE-ESTABLISHED BY A LICENSED LAND SURVEYOR IN ACCORDANCE WITH STATE LAWS.
2. EXISTING UTILITIES AND THEIR LOCATIONS, AS SHOWN ON THE PLANS REPRESENT THE BEST INFORMATION OBTAINABLE FOR DESIGN. LOCATION INFORMATION HAS BEEN OBTAINED FROM THE VARIOUS UTILITY COMPANIES AND IS EITHER FROM COMPANY RECORD DRAWINGS OR COMPANY PROVIDED FIELD LOCATIONS. THE PLAN LOCATIONS SHOWN ARE NOT GUARANTEED. ADDITIONAL EXISTING UTILITIES MAY ALSO BE ENCOUNTERED.
3. CONTRACTOR WILL BE REQUIRED TO PROVIDE A MINIMUM ADVANCE NOTICE OF FORTY-EIGHT (48) HOURS TO UTILITY COMPANIES PRIOR TO STARTING ANY EXCAVATION AS FOLLOWS:

KANSAS ONE-CALL 1-800-344-7233
or 687-2470 (LOCAL WICHITA)

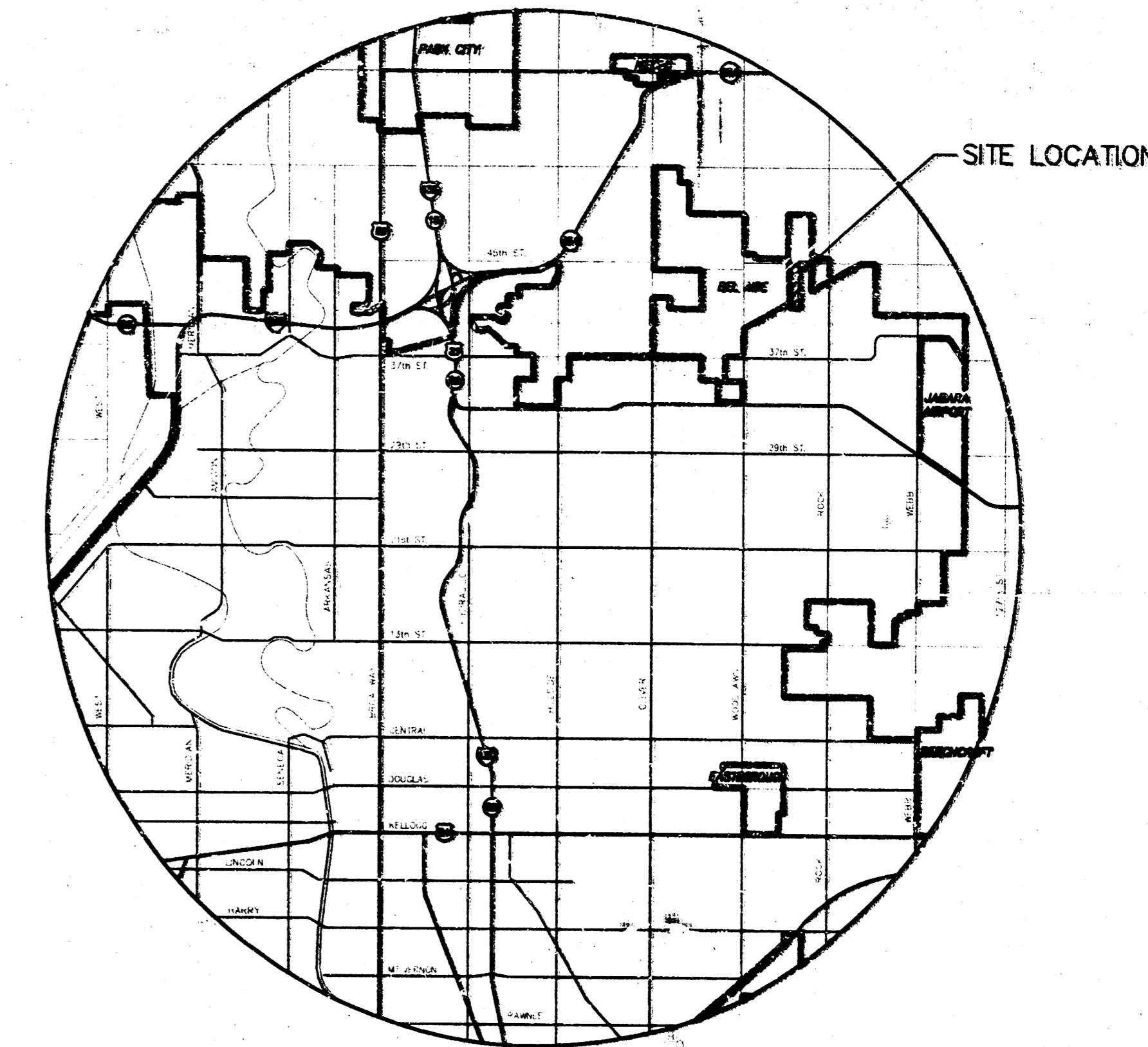
THE CONTRACTOR MUST NOTIFY THE FOLLOWING IN CASE OF AN EMERGENCY:

SOUTHWESTERN BELL TELEPHONE COMPANY 1-800-734-7590
CABLEVISION 263-2061
KG&E (GAS & ELECTRIC) 383-8600
CITY OF WICHITA WATER & SEWER MAINTENANCE 268-4908
WILLIAMS NATURAL GAS 524-0431
OR 1-800-324-9696 (AFTER 4 p.m.)

4. RUBBLE FROM THE REMOVAL OF MISCELLANEOUS STRUCTURES AND EXCESS EXCAVATION WHICH IS TO BE WASTED SHALL BE DISPOSED OF ON SITES TO BE PROVIDED BY THE CONTRACTOR. THESE SITES SHALL BE APPROVED BY THE ENGINEER AS TO SUITABILITY, APPEARANCE AND SITE LOCATION. LOCATIONS THAT, IN THE OPINION OF THE ENGINEER, WILL LEAVE AN UNSIGHTLY APPEARANCE WILL NOT BE APPROVED. ALL DISPOSAL SITES MUST BE APPROVED BY THE KANSAS DEPARTMENT OF HEALTH AND ENVIRONMENT. MATERIAL EITHER STOCKPILED OR DISPOSED OF IN A FLOOD PLAIN WILL REQUIRE A KANSAS STATE BOARD OF AGRICULTURE PERMIT. ANY MATERIAL DUMPED IN WATERS OF THE UNITED STATES OR WETLANDS IS SUBJECT TO U.S. CORPS OF ENGINEERS PERMITTING REGULATIONS. ANY MATERIAL BURIED OR STOCKPILED BEYOND APPROVED CONSTRUCTION LIMITS WILL REQUIRE ADDITIONAL ARCHAEOLOGICAL INVESTIGATIONS UNLESS BURIED IN A PREVIOUSLY APPROVED BORROW LOCATION.
5. COST OF EXCAVATION, HAULING, AND DUMPING OF EXCESS EXCAVATION SHALL BE SUBSIDIARY TO THE PROJECT.
6. A PORTION OF EXCESS EXCAVATED MATERIAL SHALL BE MOUNDING AROUND MANHOLES WHICH EXTEND MORE THAN ONE (1) FOOT ABOVE THE EXISTING GROUND. SUCH MOUNDS SHALL BE CONSTRUCTED WITH A SIX (6) FOOT DIAMETER FLAT TOP WITH 4 TO 1 SIDE SLOPES DOWN TO THE ORIGINAL GROUND. THE ELEVATION OF THE FLAT TOP OF THE MOUND SHALL BE 0.4 FOOT BELOW THE TOP OF THE MANHOLE.
7. ALL STUBS AND PLUGGED PIPES SHALL BE LOCATED WITH GREEN PLASTIC TAPE IN THE SAME MANNER AS RISERS.
8. PRIOR TO LAYING POWER LINES USING EXISTING STUBS IN EXISTING MANHOLES, THE CONTRACTOR SHALL EXPOSE AND VERIFY THE ELEVATION, GRADE AND ALIGNMENT OF EXISTING STUBS AND NOTIFY THE ENGINEER OF ANY DEVIATION FROM THE PLAN. WHERE CONNECTION TO AN EXISTING MANHOLE THAT DOES NOT HAVE AN EXISTING STUB OR THE STUB IS UNUSABLE DUE TO ELEVATION GRADE OR ALIGNMENT, THE CONTRACTOR SHALL RESHAPE THE EXISTING MANHOLE INVERT TO PROVIDE SMOOTH FLOW. THE COST OF RESHAPING EXISTING MANHOLE INVERTS IS INCIDENTAL TO THE PROJECT.
9. TREES AND SHRUBS IN PUBLIC RIGHT-OF-WAY WHICH ARE IN DIRECT CONFLICT WITH PROPOSED NEW CONSTRUCTION SHALL BE REMOVED BY THE CONTRACTOR WITH THE ENGINEER'S APPROVAL. TREES AND SHRUBS WHICH ARE NOT IN DIRECT CONFLICT WITH PROPOSED NEW CONSTRUCTION SHALL BE SAVED AND PROTECTED FROM DAMAGE.
10. ALL DISTURBED AREAS TO BE SEEDED WITH RYE GRASS AT A RATE OF 200 LBS./ACRE WITHIN 10 DAYS OF CONSTRUCTION. CONTRACTOR TO PREPARE GROUND PER CITY SPEC. COST IS SUBSIDIARY TO PROJECT.
11. RESEED ALL DISTURBED AREAS WITHIN WILLOWBEND GOLF COURSE WITH SAME. COST IS SUBSIDIARY TO PROJECT.
12. ACCESS TO LINE 1 CONSTRUCTION AREA SOUTH OF THE RAILROAD IS POSSIBLE THROUGH LOT 27, BLOCK 1, WILLOWBEND THIRD ADDITION. THE CONTRACTOR WILL BE REQUIRED TO OBTAIN AN AGREEMENT WITH THE OWNER, RON BROWN, PRIOR TO START OF CONSTRUCTION.
RON BROWN: (HOME) 836-2919
(WORK) 263-7591
13. COSTS ASSOCIATED WITH THE AGREEMENT AND ACCESS TO THE SITE SHALL BE CONSIDERED SUBSIDIARY TO THE PROJECT.



EASEMENT GRADING (FOR INFORMATION ONLY)		
	CUT C.Y.	FILL C.Y.
LINE 1	0	0
LINE 2	0	377.0
LINE 3	0	286.5
LINE 4	6.7	92.9
LINE 5	0	0
LINE 6	0.8	158.7



LOCATION MAP

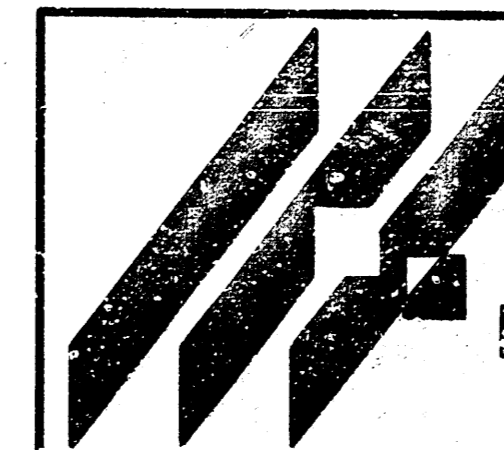
INDEX TO DRAWINGS

SHEET NO.	DESCRIPTION
1	TITLE SHEET
2	MANHOLE DETAILS
3-5	LINE 1
6	LINE 1, LINE 2, LINE 3
7	LINE 4, LINE 5, LINE 6
8	FINAL PLAT

BENCHMARKS

- BM#1 NE COR. OF RCB UNDER UNION PACIFIC RAILROAD, ±420' NE OF INTERSECTION CENTER SEC. LINE & C/L RAILROAD. ELEV. = 185.31
- BM#2 TOP OF "I" POST ±314' EAST OF WEST LINE OF PLAT & ±1579' SOUTH OF 45TH. ST. NO. ELEV.=181.802
- BM#3 RR SPIKE IN E. FACE OF THE EAST HLP WEST OF THE W. LINE OF PLAT ±800' S. OF 45TH. ST. NO. ELEV.=191.487
- BM#4 TOP OF "I" POST ±334' EAST OF WEST LINE OF PLAT & ±496' SOUTH OF 45TH. ST. NO. ELEV.=191.155
- BM#5 RR SPIKE IN S. FACE OF PP NORTH SIDE 45TH. ST. NO. ±600' EAST OF NW CORNER OF PLAT ELEV.=195.398

*Booked
2/4/98
N. 292
P. DL*



MID-KANSAS ENGINEERING
CONSULTANTS, INC.
411 N. WEBB ROAD
WICHITA, KS. 67204
31A-688-9600

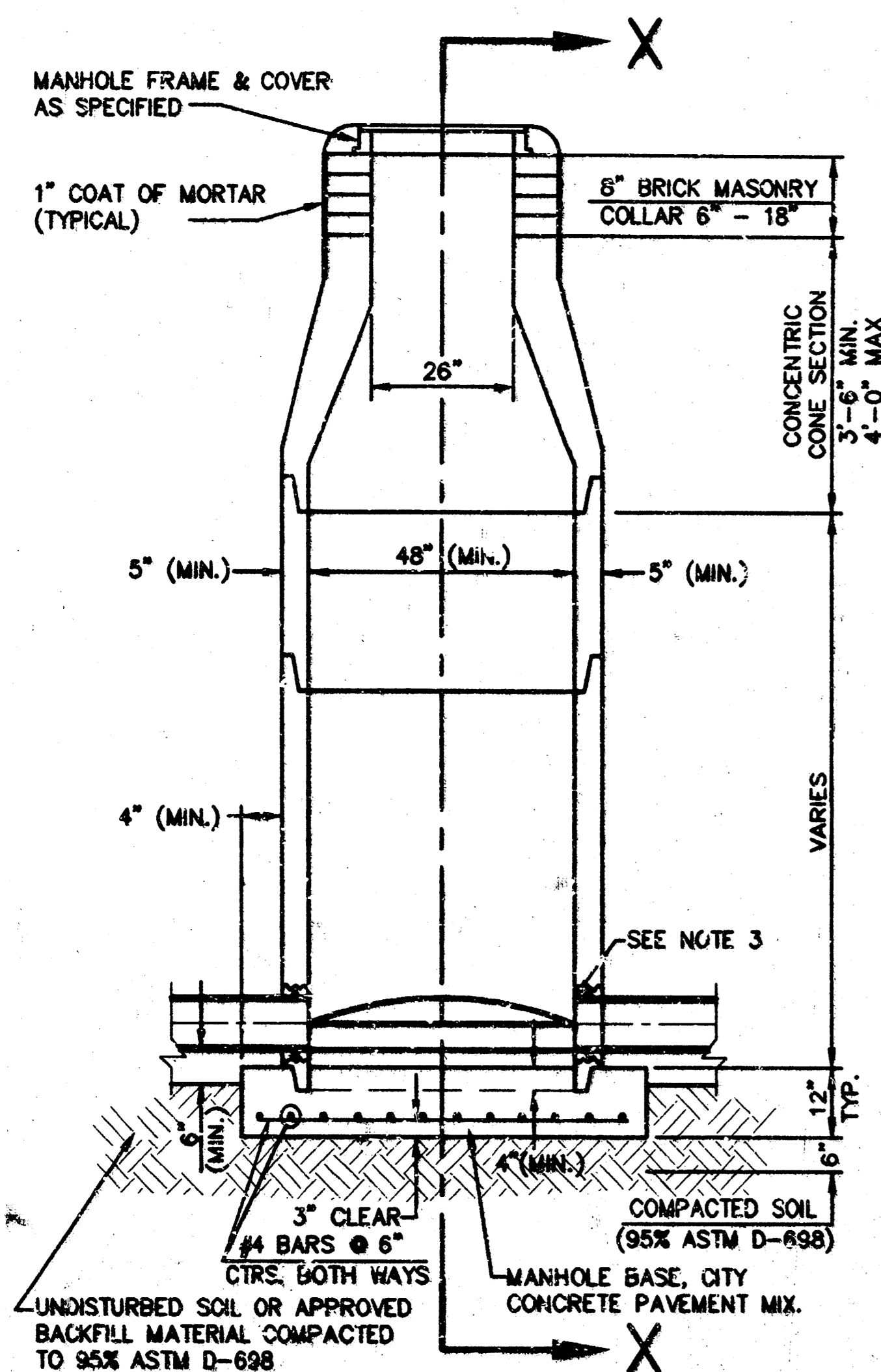
WILLOWBEND NORTH ADDITION
PROJECT NAME

SANITARY SEWER PLANS
SHEET TITLE

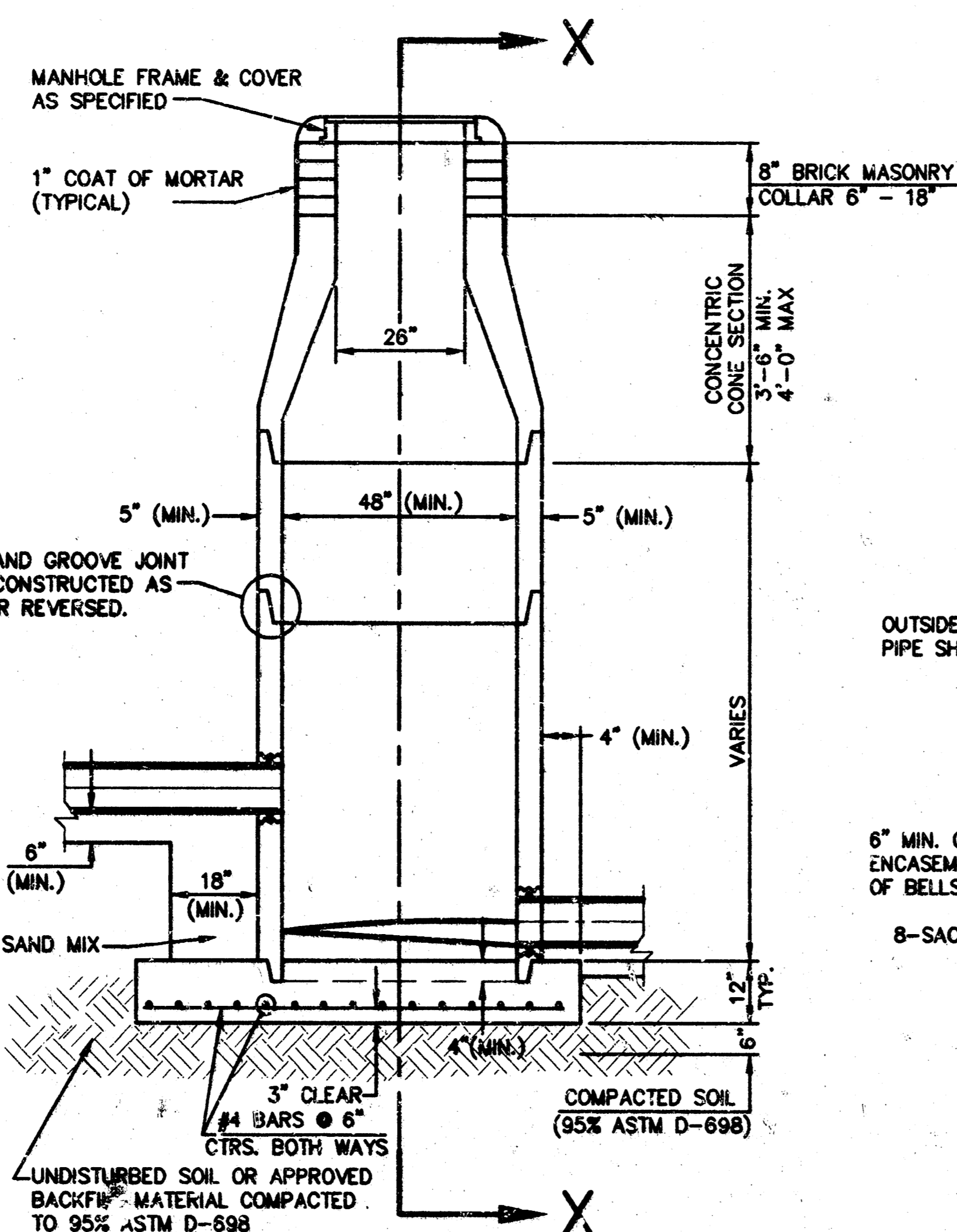
DESIGN BY: GJA	DRAWN BY: MWJ	CHECKED BY: GJA
DATE: 5/23/97	PROJECT NO.: 96082-BT	SHEET NO.: 1 / 8

SEWER APPURTENANCES DETAILS

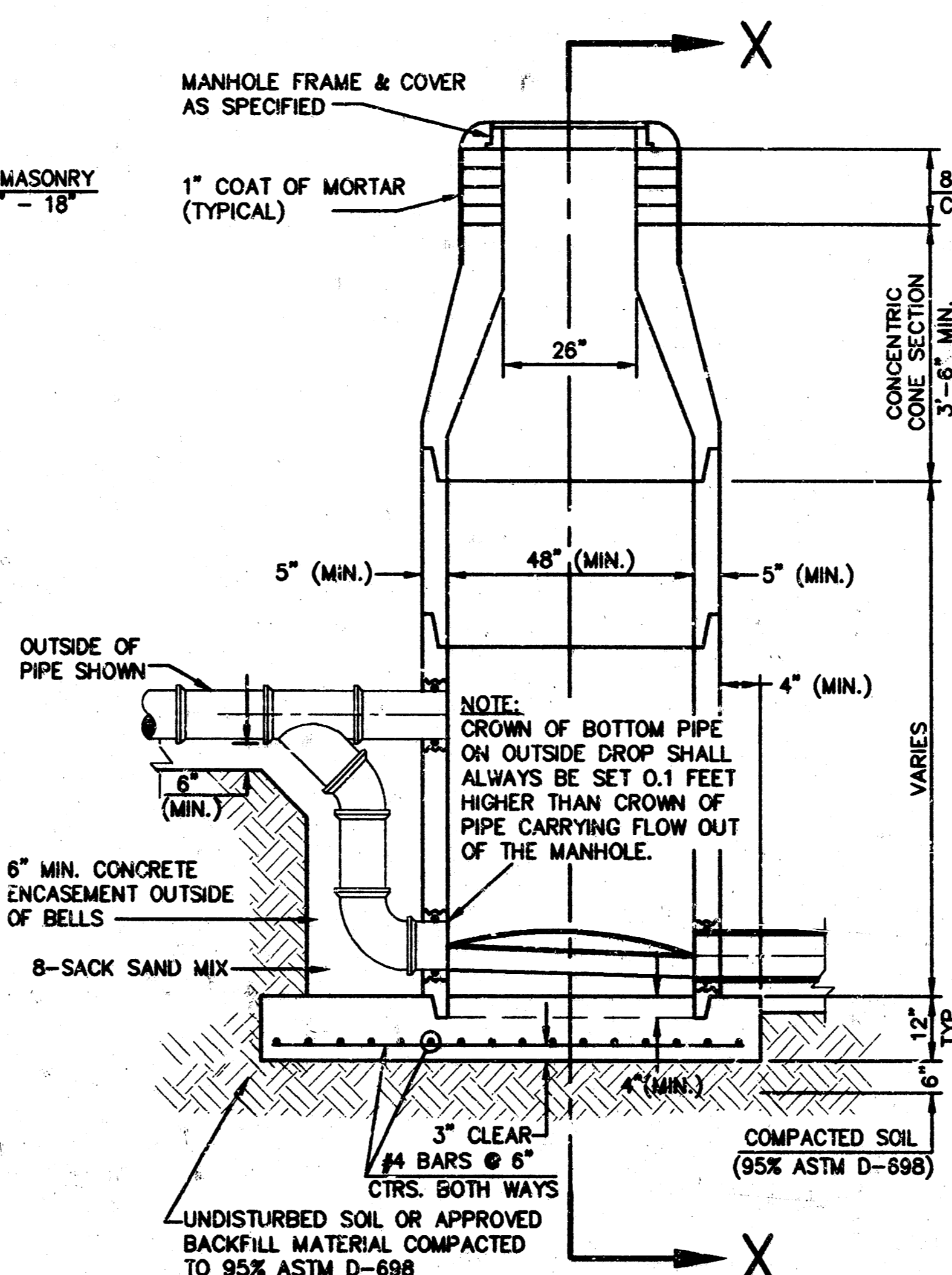
ADOPTED AS STANDARD DESIGN
BY
CITY OF WICHITA



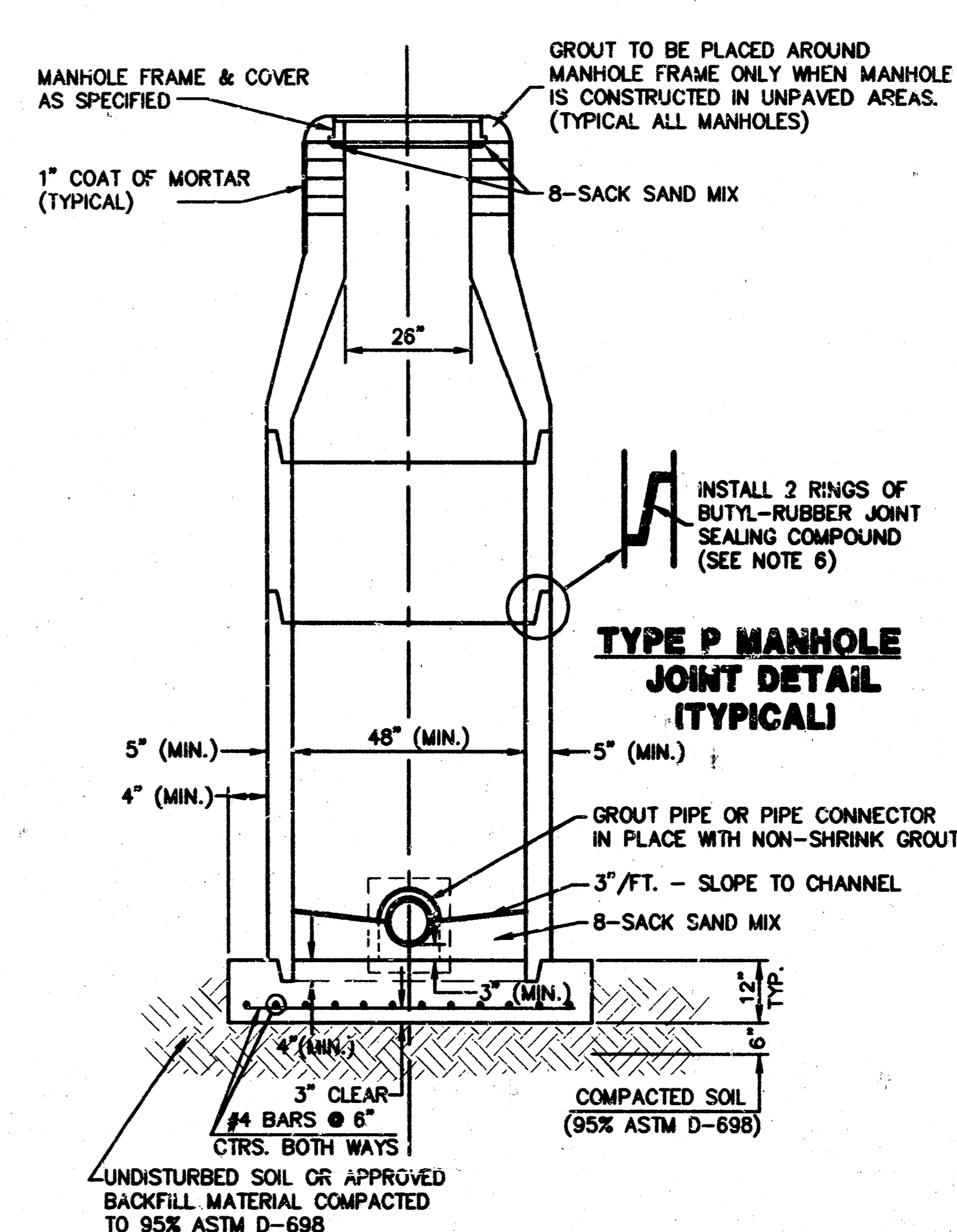
**TYPE P
STANDARD MANHOLE**



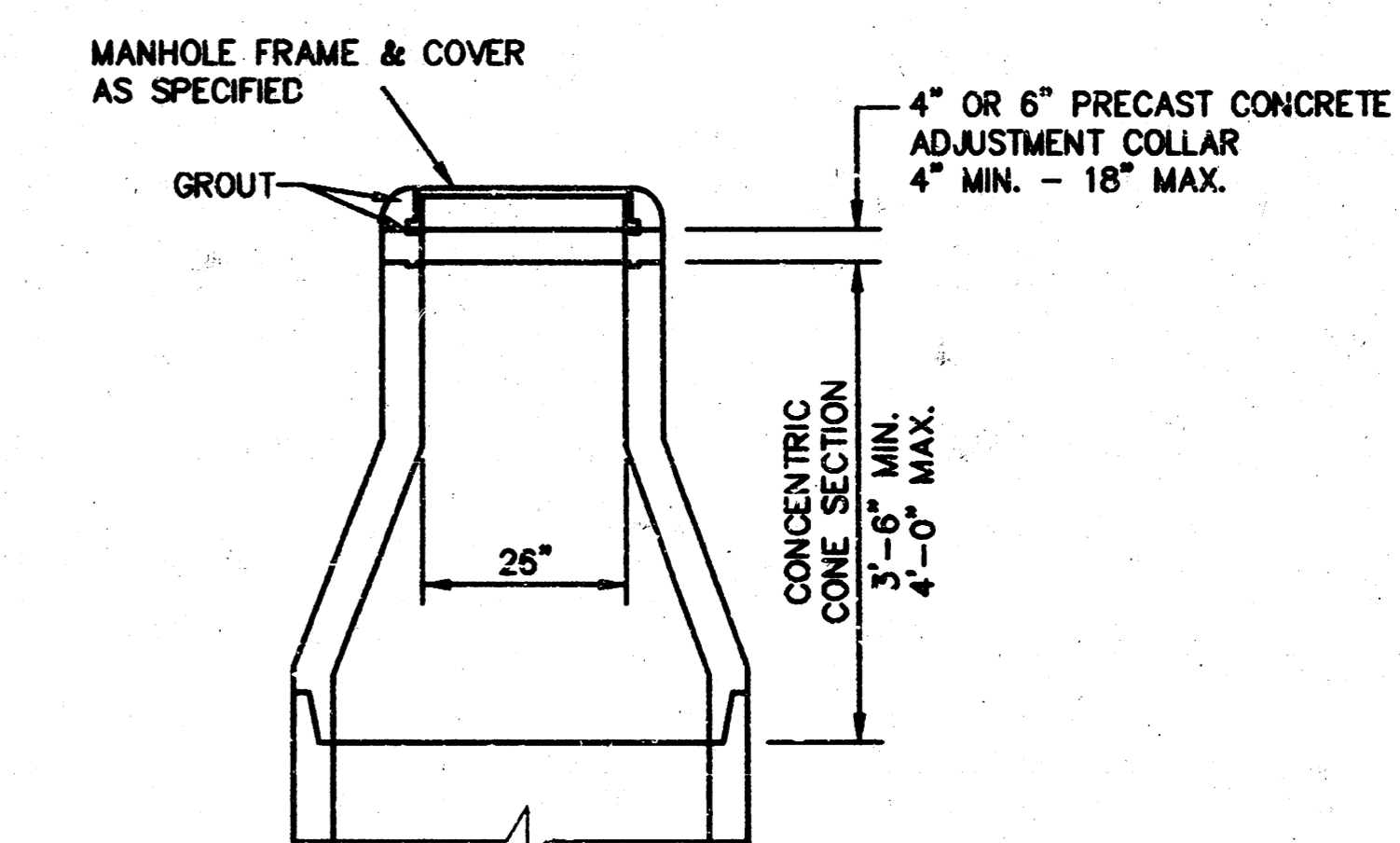
**TYPE P
INSIDE DROP MANHOLE**



**TYPE P
OUTSIDE DROP MANHOLE**



**SECTION X
(TYPICAL)**



**ALTERNATE CONSTRUCTION
IN UNPAVED AREAS**

GENERAL NOTES - PRECAST MANHOLE NOTES

- ALL PRECAST CONCRETE MANHOLE SECTIONS SHALL CONFORM TO THE LATEST REVISIONS OF A.S.T.M. C478 AS MODIFIED BY THE SPECIFICATIONS.
- NON-SHRINK GROUT SHALL BE NON-METALLIC TYPE.
- APPROVED FLEXIBLE WATERSTOP GASKETS SHALL BE INSTALLED TO JOIN THE SEWER TO THE MANHOLE WALL WHEN A.B.S. COMPOSITE PIPE OR P.V.C. PIPE IS USED. FOR OTHER TYPES OF PIPE THE SEWER SHALL BE GROUTED IN PLACE WITH NON-SHRINK GROUT. THE SEWER PIPE SHALL BE SUPPORTED WITH CONCRETE ENCASEMENT A MINIMUM OF 3 FEET FROM THE MANHOLE WALL AND TO THE FIRST JOINT FOR V.C.P. SUCH THAT THE JOINT REMAINS FLEXIBLE.
- ALL INSIDE SURFACES OF THE CONCRETE MANHOLE WHICH WOULD BE EXPOSED TO SEWER GAS SHALL BE COATED WITH 2 COATS TNEC SERIES 66 HI-BUILD EPOXOLINE, DRY THICKNESS OF 8 MILS (MIN.).
- EXTERIOR MANHOLE WALLS SHALL BE COATED WITH 1 COAT MOBILARMA 633 BITUMINUS COATING.
- JOINT SEALING COMPOUND SHALL BE KENT SEAL NO. 2 OR APPROVED EQUAL.
- PRECAST MANHOLES SHALL BE SET AT LEAST 4 INCHES INTO THE MANHOLE BASE.
- TOP OF MANHOLE FLOOR SLAB SHALL BE AT LEAST 3 INCHES BELOW THE FLOW LINE OF THE OUTLET PIPE TO INSURE SUFFICIENT MINIMUM THICKNESS OF SHAPED INVERT.
- LIFTING HOLES SHALL BE FILLED WITH NON-SHRINK GROUT AND THE INTERIOR SURFACE COATED AS SPECIFIED.
- MORTAR USED IN MASONRY CONSTRUCTION SHALL CONTAIN 8 SACKS OF CEMENT PER CUBIC YARD. CONCRETE USED IN MANHOLE BASES SHALL CONFORM TO THE REQUIREMENTS OF CONCRETE FOR CONCRETE PAVEMENT CONSTRUCTION AS SPECIFIED IN THE CITY STANDARD PAVING SPECIFICATIONS USING CITY CONCRETE PAVEMENT MIX WITHOUT AIR ENTRAINING ADMIXTURE. MORTAR SHALL BE PLACED AROUND THE MANHOLE RING AS SHOWN ON THE DRAWINGS WHEN MANHOLES ARE CONSTRUCTED IN UNPAVED AREAS. MANHOLES CONSTRUCTED WHERE PIPE SIZES ARE SMALLER THAN 24" SHALL HAVE AN INSIDE DIAMETER OF 4". MANHOLES CONSTRUCTED WHERE PIPE SIZES ARE 24" OR LARGER SHALL HAVE AN INSIDE DIAMETER OF 5". COMPLETED MANHOLE SHALL BE WITHOUT LEAKS AND WATER TIGHT.
- REINFORCING STEEL SHALL BE INSTALLED IN THE MANHOLE BASES AND SHALL CONSIST OF NO. 4 BARS PLACED ON 6" CENTERS IN BOTH DIRECTIONS. THE MANHOLE BASE REINFORCEMENT SHALL BE PLACED AT LEAST 3" ABOVE THE BOTTOM OF THE MANHOLE BASE. ALL COSTS FOR FURNISHING AND INSTALLING REINFORCING STEEL SHALL BE INCLUDED IN THE UNIT PRICE BID FOR THE MANHOLE.
- OPENINGS SHALL BE CUT INTO THE MANHOLE WALL WHEN OUTSIDE DROPS ARE CONSTRUCTED ON EXISTING MANHOLES. SUCH OPENINGS CUT INTO EXISTING MANHOLES SHALL BE AS SMALL AS PRACTICAL TO FACILITATE INSTALLING AND GROUTING THE NEW PIPE IN PLACE. WATERSTOP GASKETS SHALL BE USED WITH P.V.C. AND A.B.S. COMPOSITE PIPE. THE NEW PIPE SHALL BE GROUTED INTO THE OPENING USING AN APPROVED NONSHRINK GROUT FOR THE FULL MANHOLE WALL THICKNESS. THE EXTERIOR OF THE COMPLETED CONNECTION SHALL BE SEALED WITH AN APPROVED BITUMINOUS COATING SUCH THAT THE CONNECTION WILL BE WATER TIGHT. FLOOR OF MANHOLE SHALL BE MODIFIED TO FORM NEW FLOW CHANNEL FOR THE NEW CONNECTION AS INDICATED BY THE DRAWING. THIS WORK, INCLUDING MODIFICATION OF MANHOLE FLOOR, SHALL BE PAID FOR AT THE UNIT PRICE BID FOR OUTSIDE DROP STACK CONSTRUCTED ON EXISTING MANHOLE.
- THE FLOORS OF ALL MANHOLES SHALL BE SHAPED WITH FLOW CHANNELS SUCH THAT THE MANHOLES WILL BE SELF CLEANING AND FREE OF AREAS WHERE SOLIDS COULD BE DEPOSITED AS SEWAGE FLOWS THROUGH THE MANHOLE FROM ALL INLET PIPES TO THE OUTLET PIPE. FLOW CHANNELS SHALL BE FORMED TO MATCH THE BOTTOM HALVES OF THE INFLOWING PIPES AND THE OUTFLOWING PIPE AS SHOWN BY THE DRAWINGS EXCEPT FOR INSIDE DROP MANHOLES. FLOW CHANNELS FOR INSIDE DROP MANHOLES SHALL BE CONSTRUCTED AS INDICATED BY THE DRAWING. MANHOLE FLOORS SHALL HAVE SLOPES OF 3 INCHES PER FOOT IN THE AREAS OUTSIDE OF THE FLOW CHANNELS SLOPED TOWARD THE FLOW CHANNELS. PIPES LAID THROUGH MANHOLES SHALL HAVE THE TOP HALF REMOVED TO NEAT LINES FOR THE FULL INSIDE DIAMETER OF THE MANHOLE. MANHOLE FLOORS SHALL THEN BE SHAPED AROUND THE BOTTOM HALF OF THE PIPE WHICH FORMS THE FLOW CHANNEL.
- PIPES INSTALLED WITHIN THE EXCAVATION MADE FOR THE MANHOLE SHALL BE CRADLED WITH CONCRETE TO THE LIMITS OF THE MANHOLE EXCAVATION. WHEN CLAY PIPE IS USED, THE CRADLE SHALL EXTEND TO THE FIRST JOINT OUTSIDE THE MANHOLE. THE CRADLE SHALL BE TERMINATED AT THE CLAY PIPE JOINT IN A MANNER WHICH WILL MAINTAIN THE FLEXIBILITY OF THE JOINT. COST OF CRADLE WITHIN MANHOLE EXCAVATION OR TO CLAY PIPE JOINTS ADJACENT TO MANHOLE SHALL BE INCLUDED IN THE UNIT PRICE BID FOR THE MANHOLE.
- MANHOLE COVER CASTINGS AND MANHOLE FRAME CASTINGS SHALL CONFORM TO THE REQUIREMENTS AS INDICATED IN THE STANDARD SPECIFICATIONS AND AS SHOWN IN THE STANDARD DETAIL DRAWING.
- THE VERTICAL DROP IN INSIDE DROP MANHOLES SHALL NOT EXCEED 2' FOR INFLOWING PIPES. THE CROWNS OF INFLOWING PIPES SHALL NEVER BE SET LOWER THAN THE CROWN OF THE OUTFLOWING PIPE.
- STANDARD MANHOLES AND STANDARD INSIDE DROP MANHOLES SHALL BE BID AS STANDARD MANHOLES FOR THE TYPE AND DIAMETER INDICATED. OUTSIDE DROP MANHOLES SHALL BE BID AS STANDARD OUTSIDE DROP MANHOLES FOR THE TYPE AND DIAMETER INDICATED. ALL MANHOLE DIAMETERS WILL BE 4" UNLESS INDICATED OTHERWISE.
- A BRICK MASONRY COLLAR SHALL BE INSTALLED BETWEEN THE CAST IRON FRAME AND THE CONCENTRIC CONE. THE COLLAR WILL HAVE 8" WALLS AND A VERTICAL HEIGHT OF 6" MINIMUM AND 18" MAXIMUM. A 1" COAT OF MORTAR WILL BE PLASTERED ON THE OUTSIDE OF THE COLLAR.

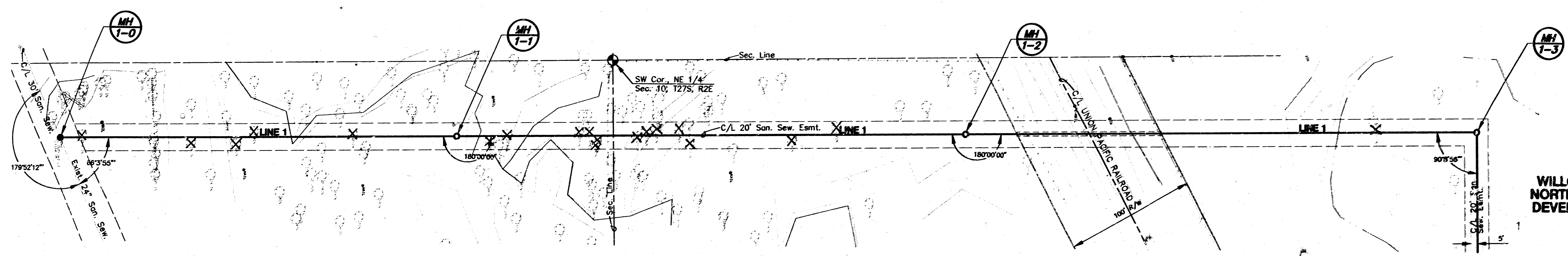
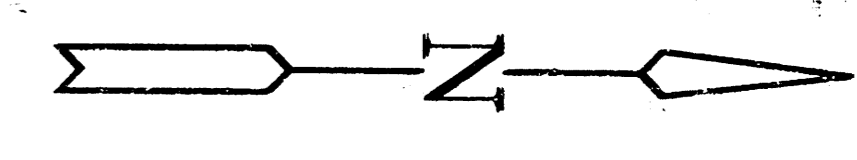
REVISED: 6-12-96

MANHOLE DETAILS

CITY OF WICHITA, KANSAS			
Design C.O.W.	Checked by	Checked by	
Drawn by	Date	Date JULY 1996	Job No. 95058D04

2/8

**WILLOWBEND NORTH ADDITION
SANITARY SEWER PLANS
PROJ. NO. 468-82712**

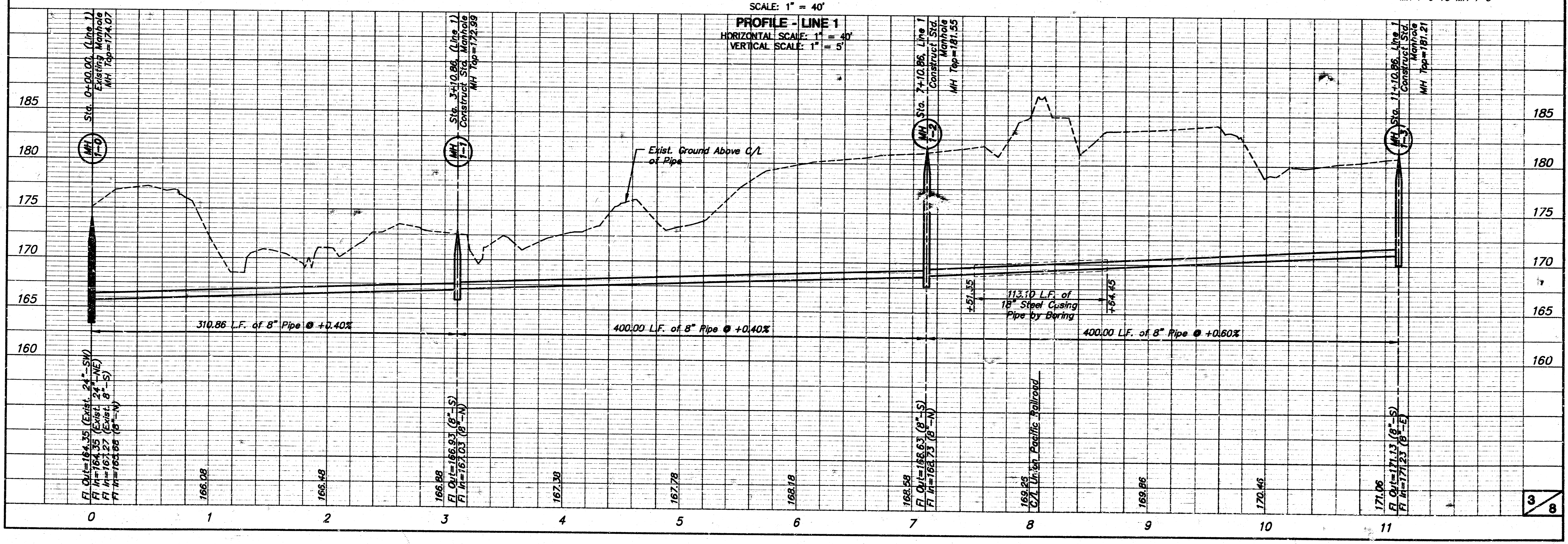


**WILLOWBEND
NORTH FUTURE
DEVELOPMENT**

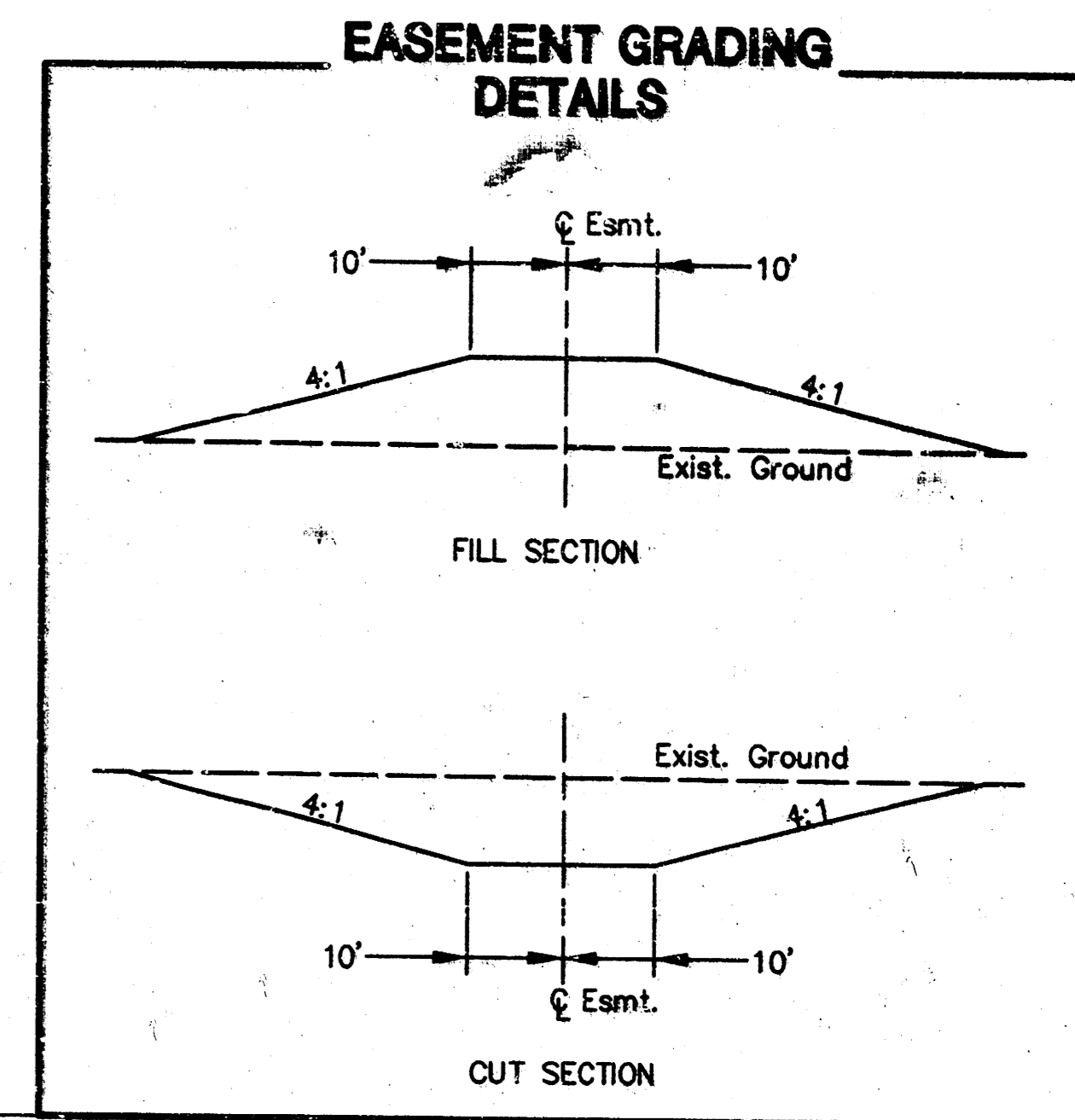
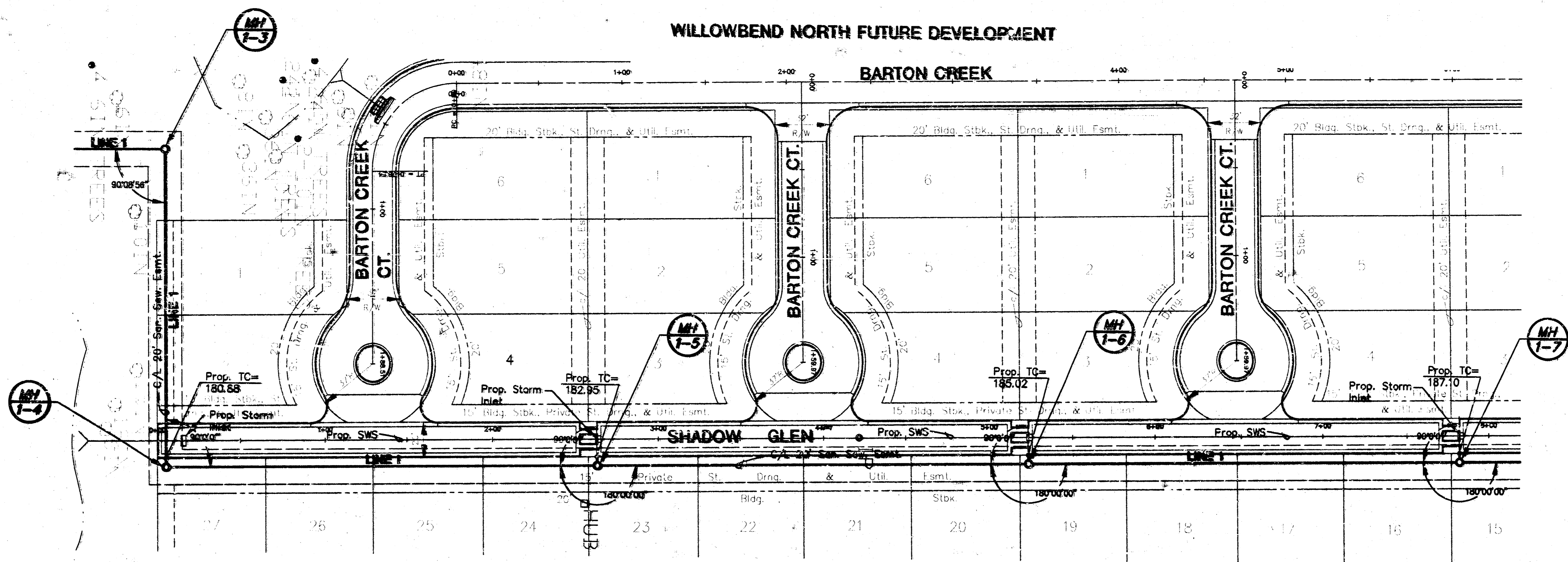
PLAN - LINE 1
SCALE: 1" = 40'

NOTE:
1. NO EASEMENT GRADING FROM
MH 1-0 TO MH 1-3

PROFILE - LINE 1
HORIZONTAL SCALE: 1" = 40'
VERTICAL SCALE: 1" = 5'



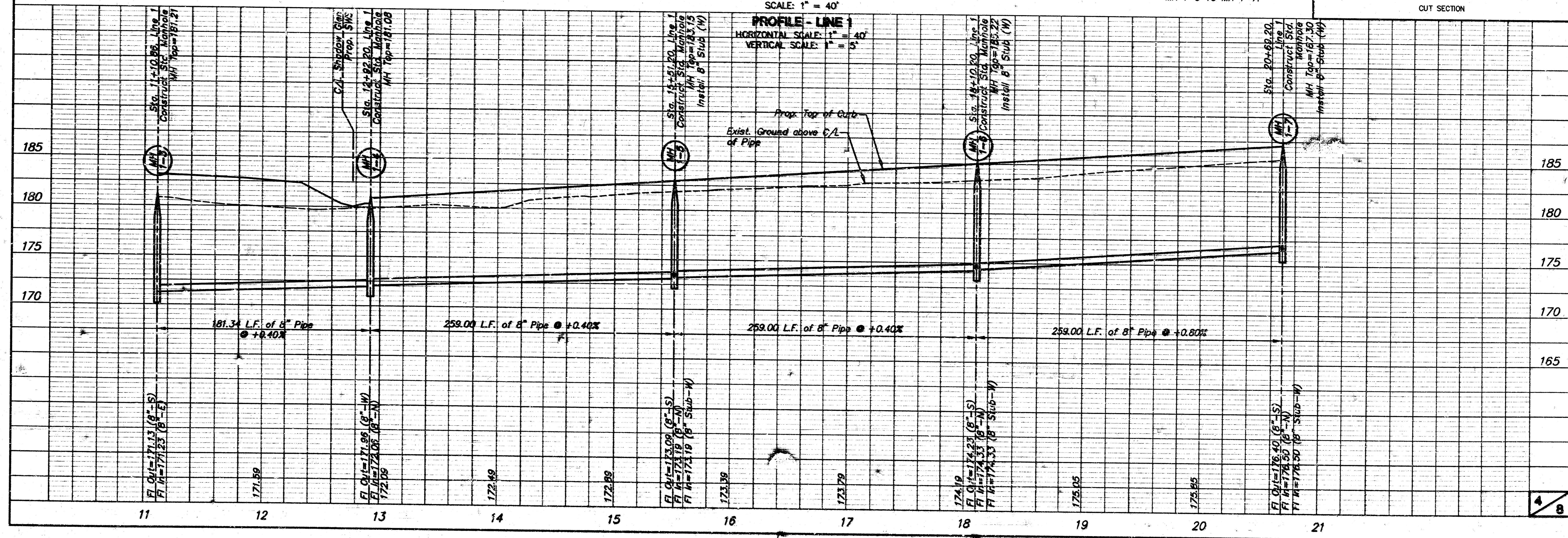
WILLOWBEND NORTH FUTURE DEVELOPMENT



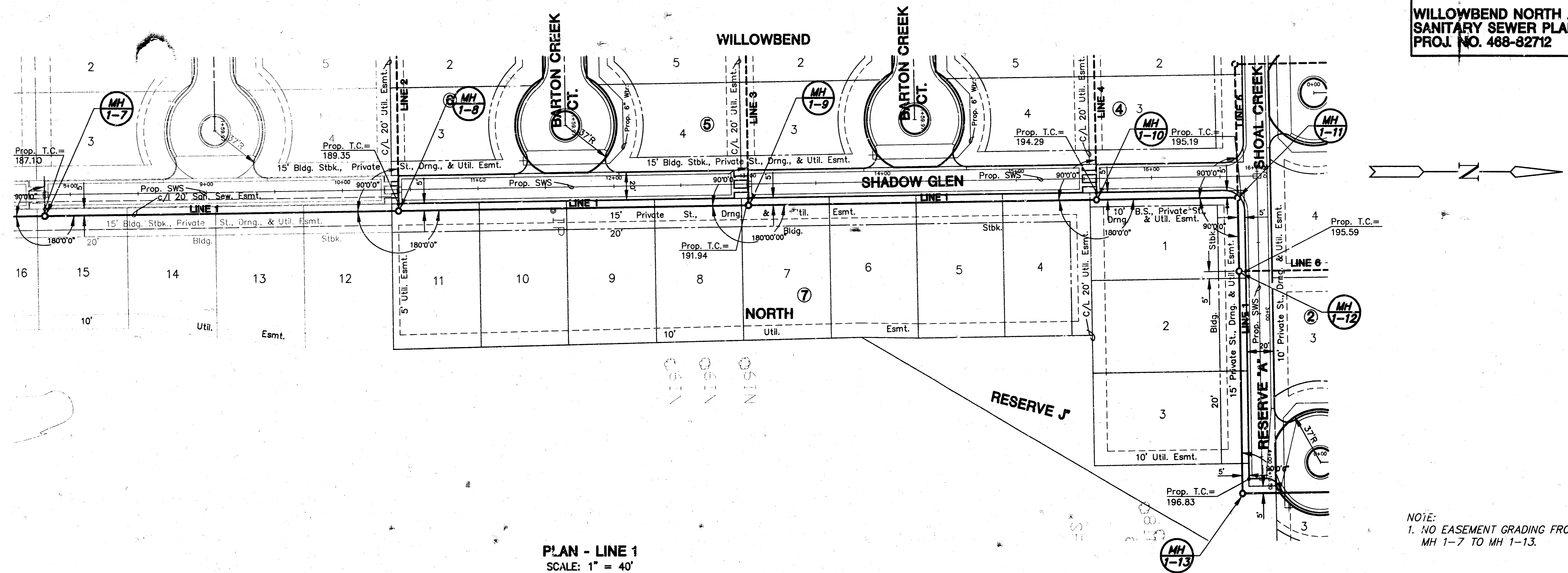
NOTE:
 1. NO EASEMENT GRADING FROM
 MH 1-3 TO MH 1-7.

PLAN - LINE 1
 SCALE: 1" = 40'

PROFILE - LINE 1
 HORIZONTAL SCALE: 1" = 40'
 VERTICAL SCALE: 1" = 5'



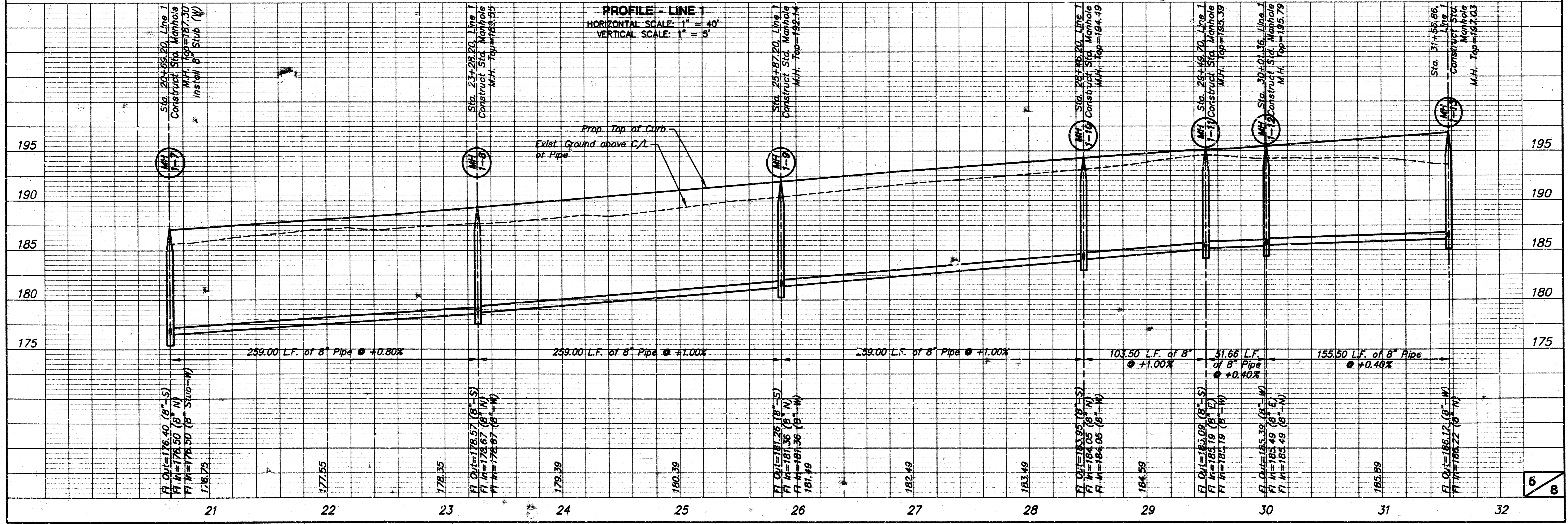
**WILLOWBEND NORTH ADDITION
SANITARY SEWER PLANS
PROJ. NO. 488-82712**

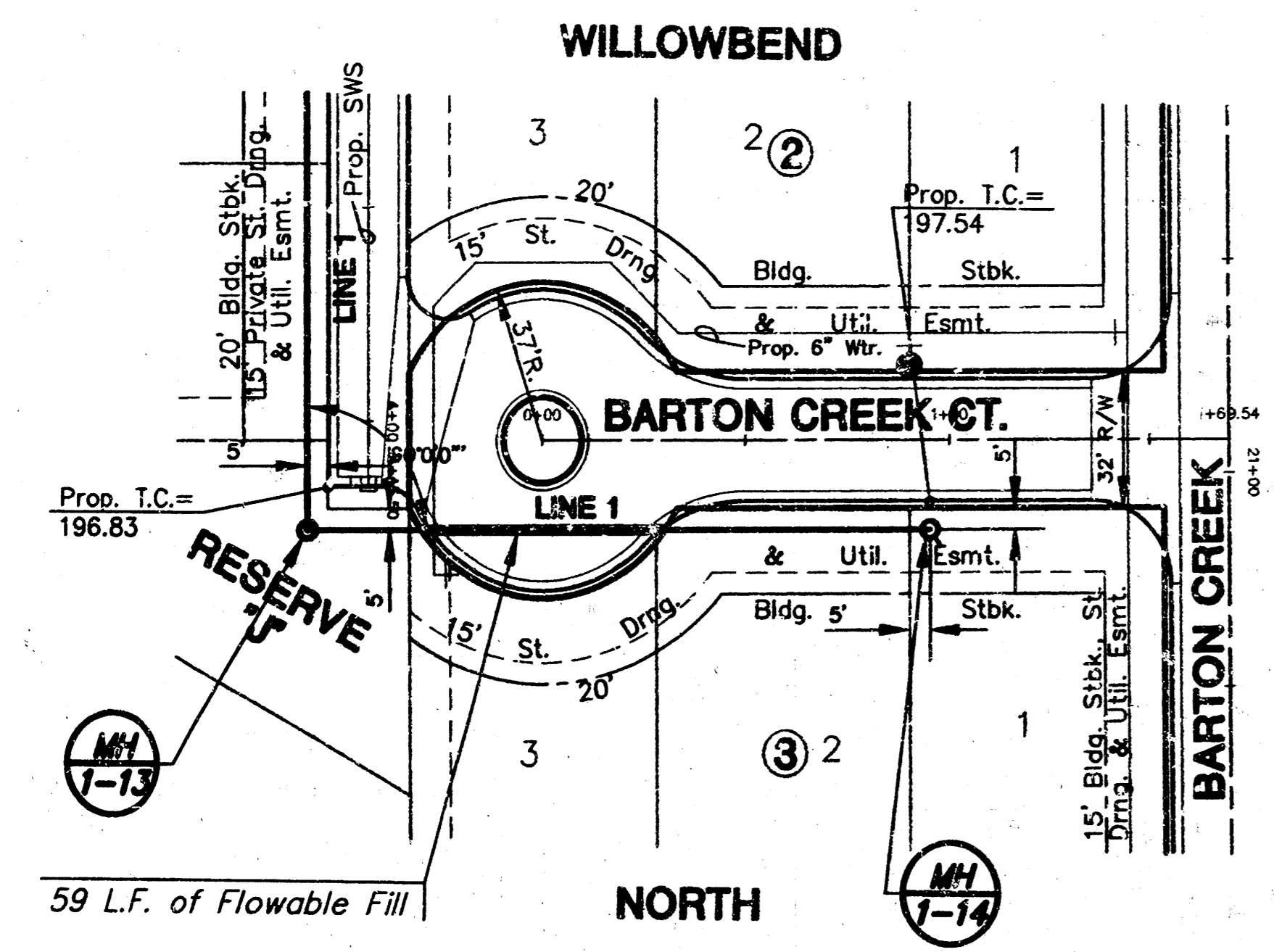


PLAN - LINE 1
SCALE: 1" = 40'

NOTE:
1. NO EASEMENT GRADING FROM
MH 1-7 TO MH 1-13.

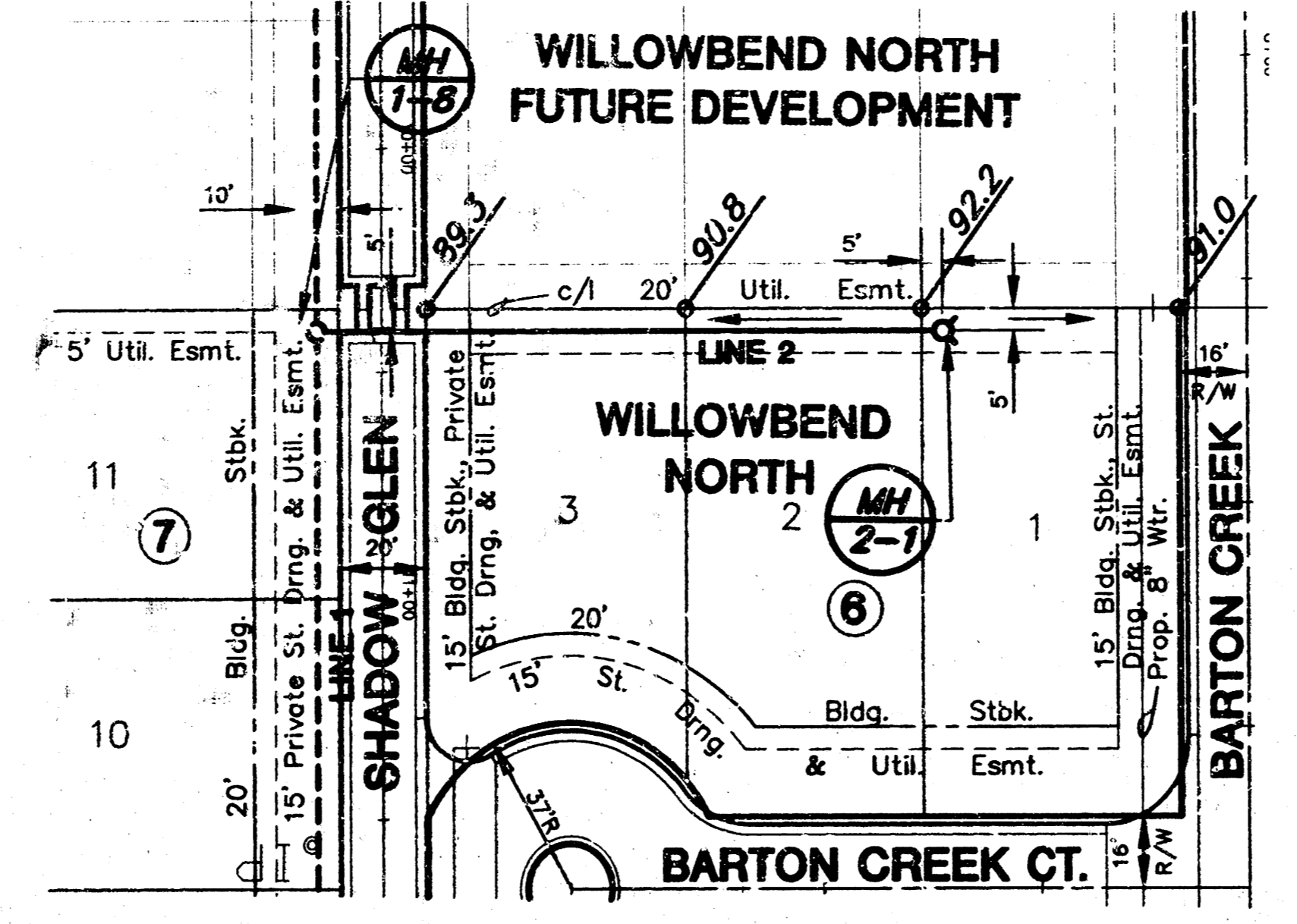
PROFILE - LINE 1
HORIZONTAL SCALE: 1" = 40'
VERTICAL SCALE: 1" = 5'



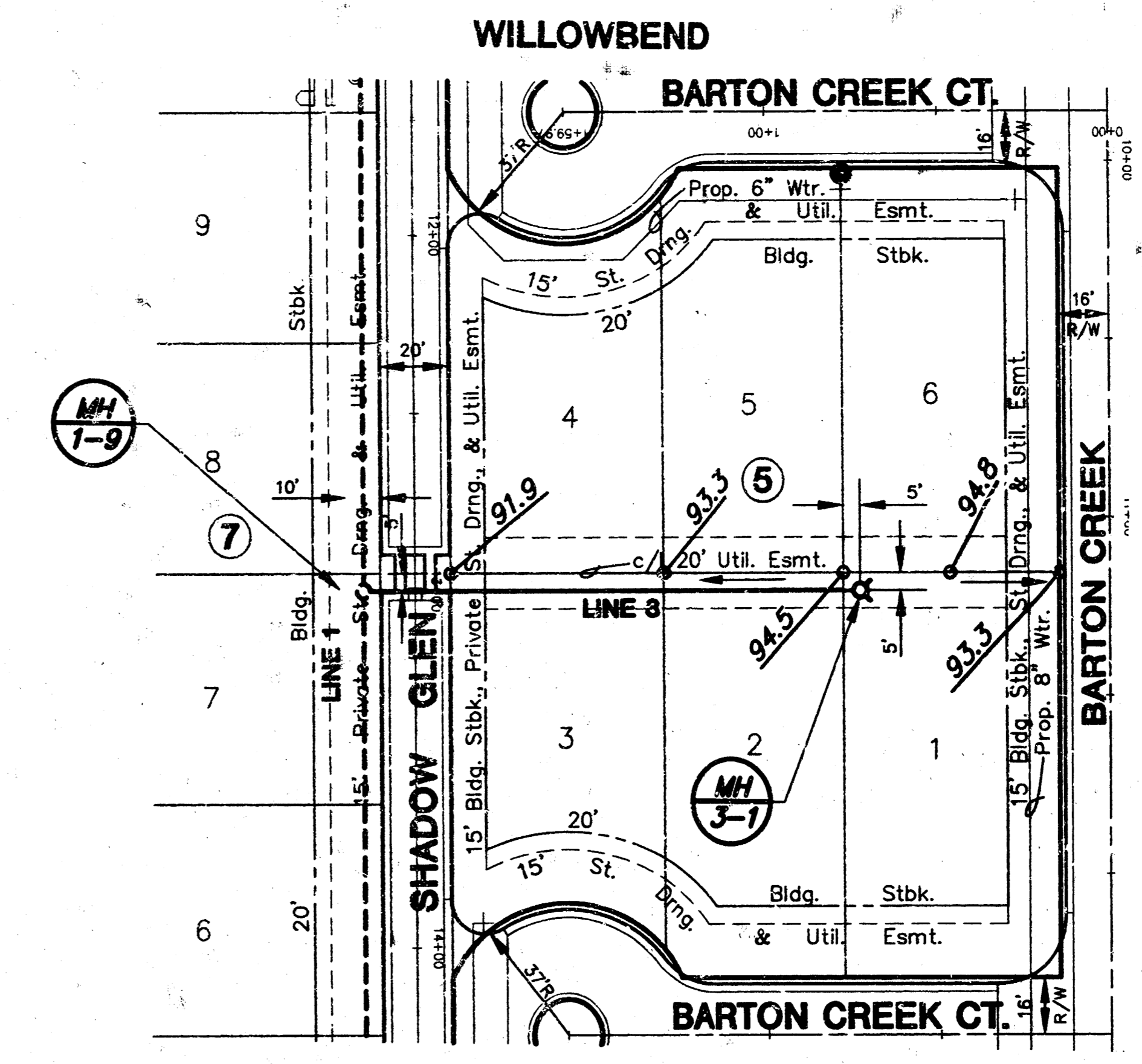


NOTE:
1. NO EASEMENT GRADING FROM
MH 1-13 TO MH 1-14.

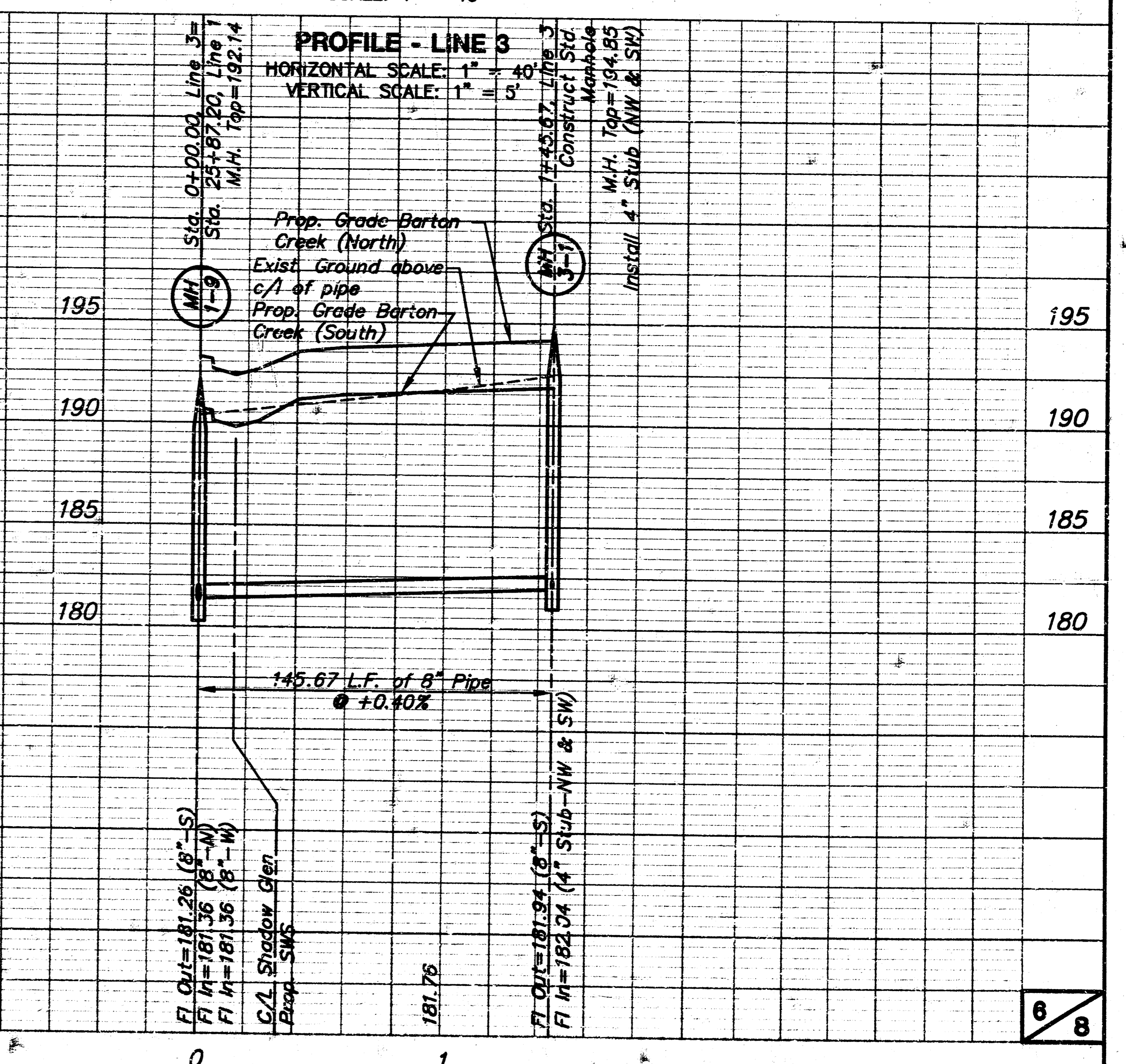
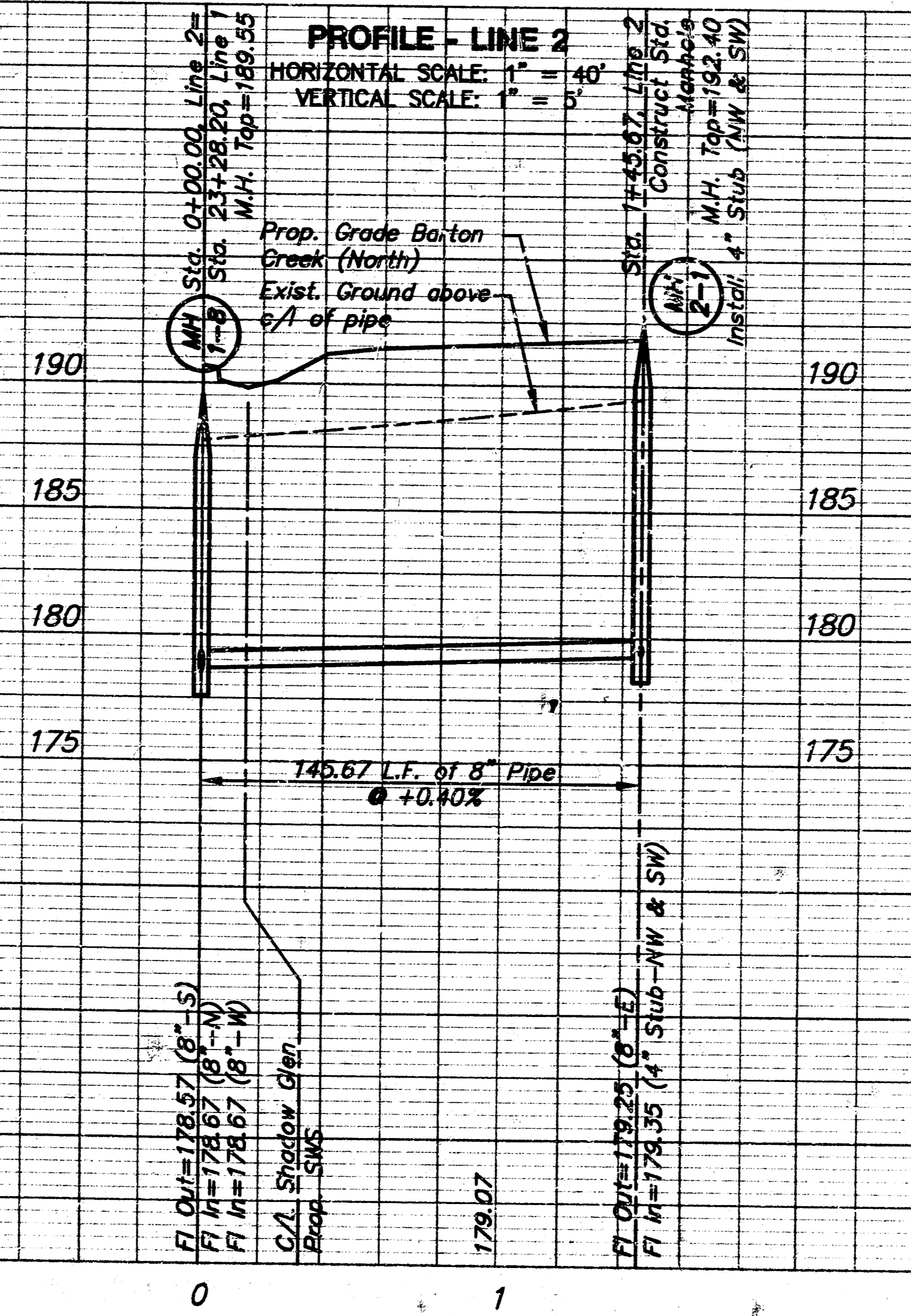
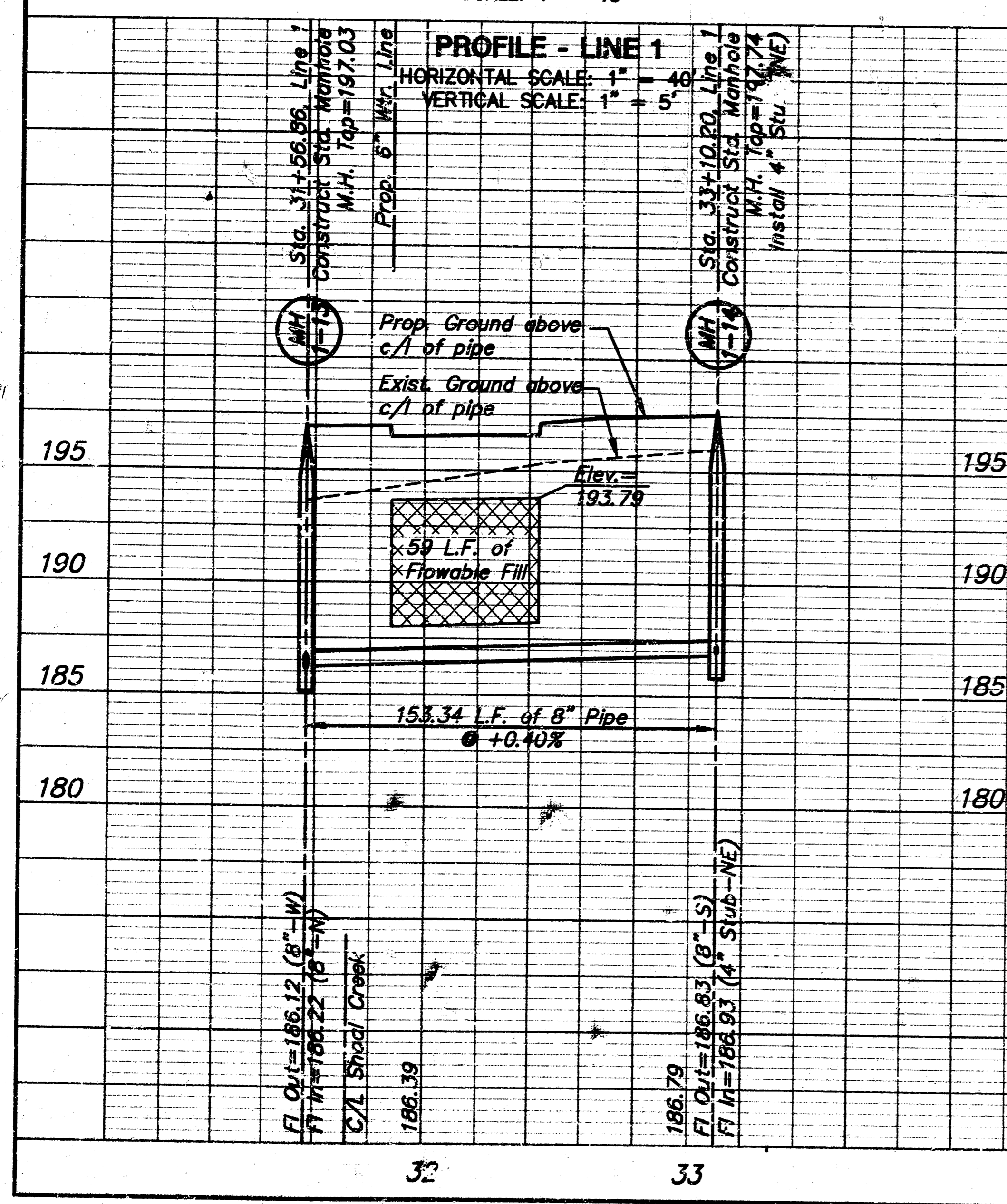
PLAN - LINE 1
SCALE: 1" = 40'



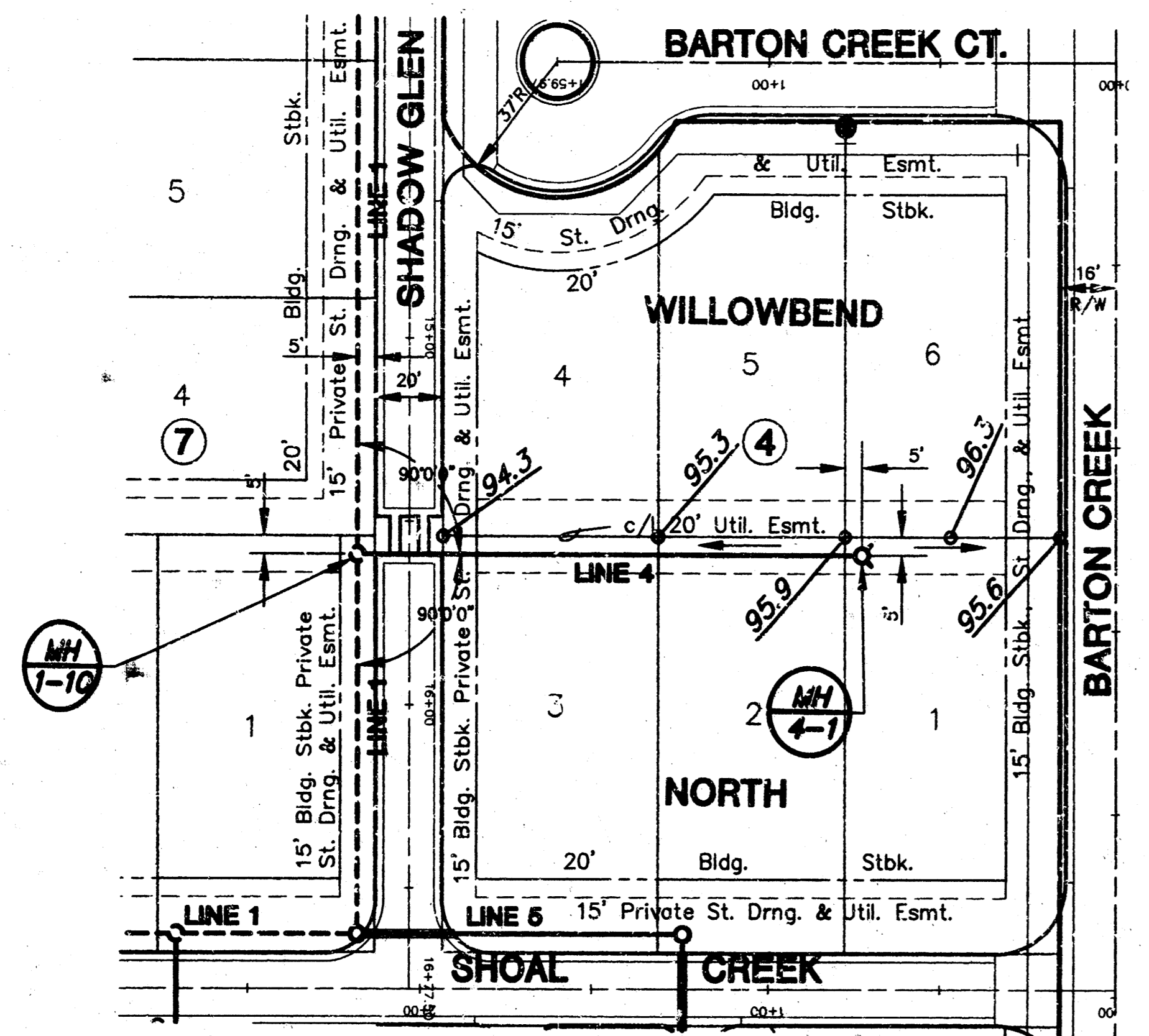
PLAN - LINE 2
SCALE: 1" = 40'



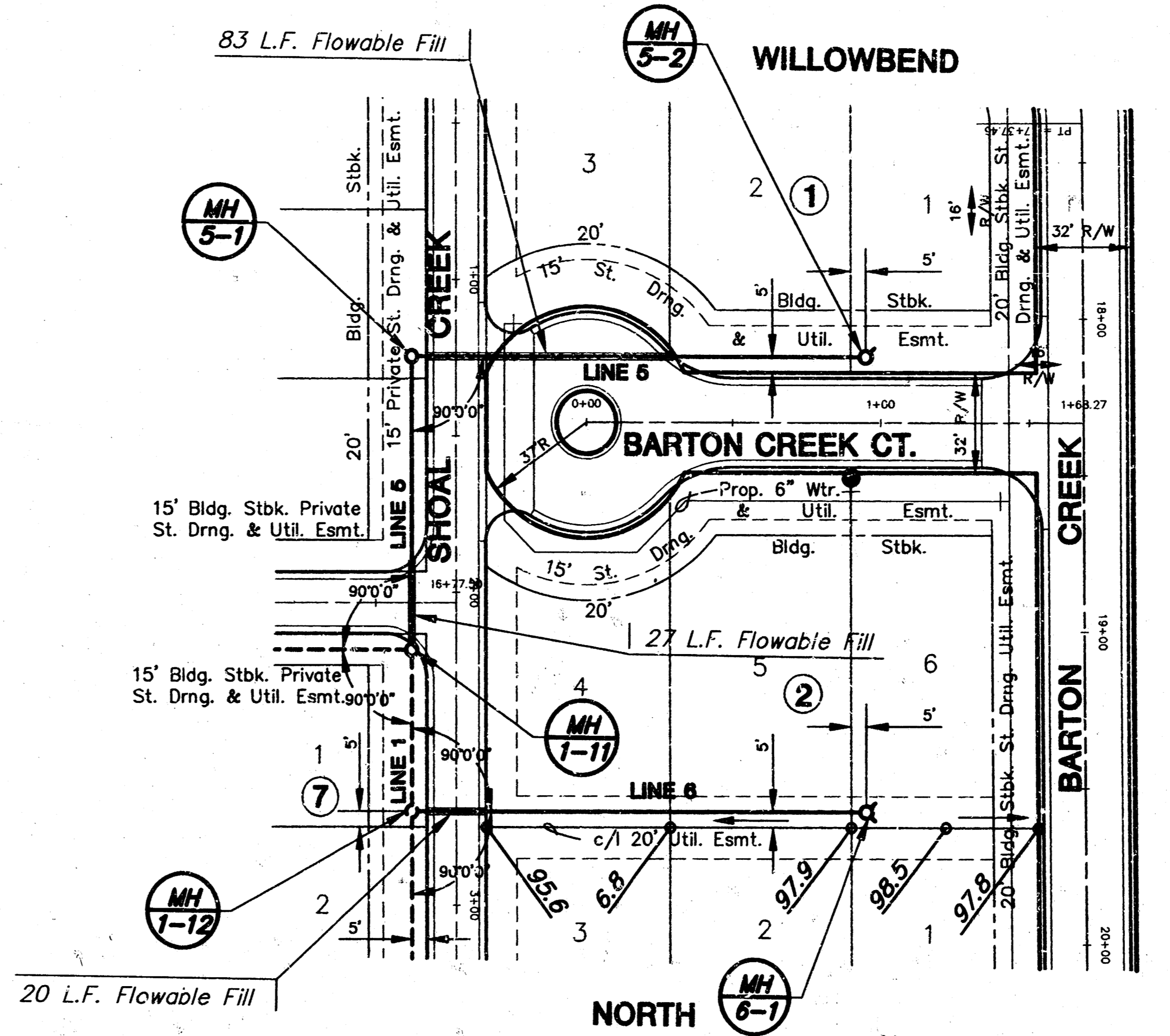
PLAN - LINE 3
SCALE: 1" = 40'



**WILLOWBEND NORTH ADDITION
SANITARY SEWER PLANS
PROJ. NO. 468-82712**



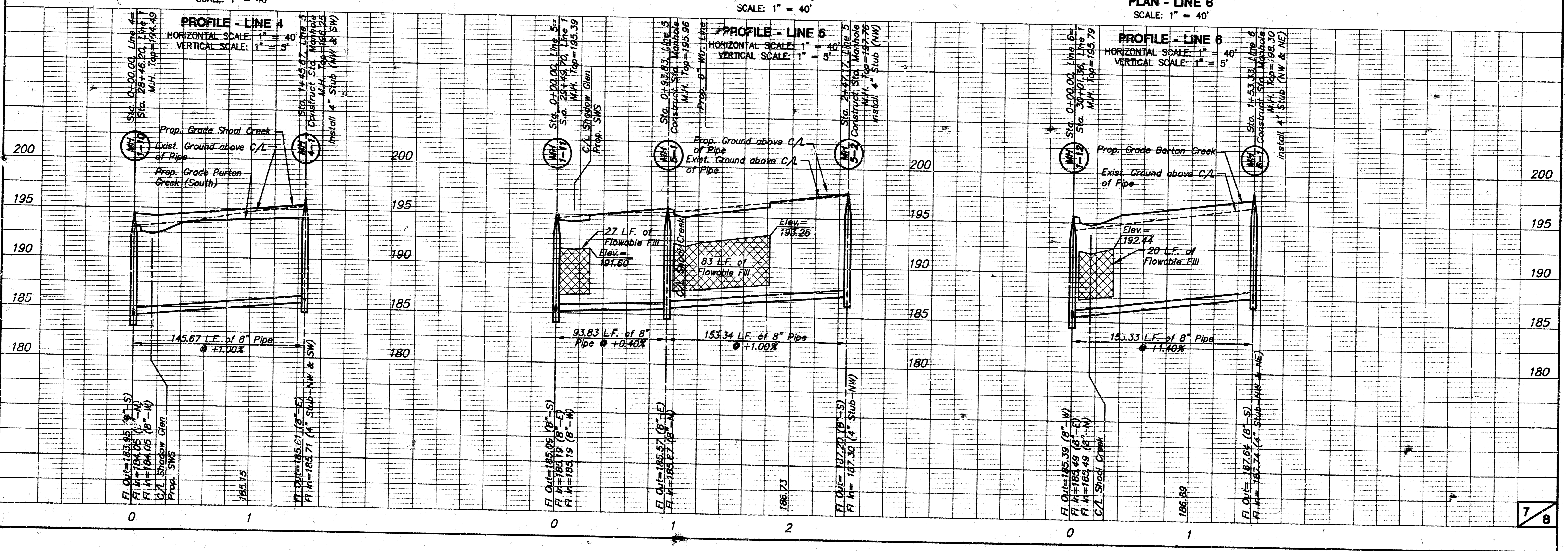
PLAN - LINE 4
SCALE: 1" = 40'



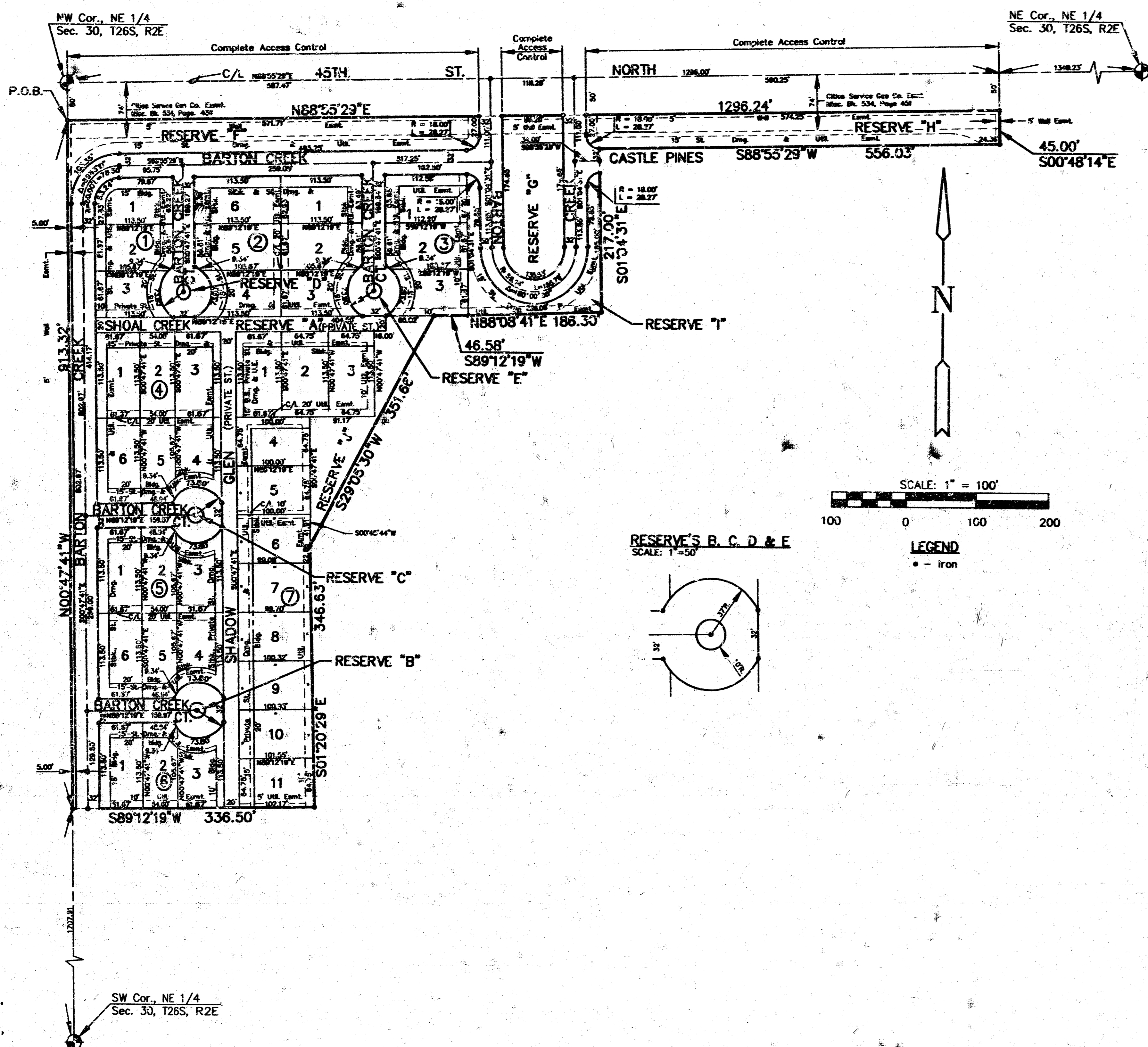
PLAN - LINE 5
SCALE: 1" = 40'

NOTE:
1. NO EASEMENT GRADING FROM
MH 1-11 TO MH 5-2.

PLAN - LINE 6
SCALE: 1" = 40'



FINAL PLAT OF WILLOWBEND NORTH ADDITION AN ADDITION TO WICHITA, SEDGWICK COUNTY, KANSAS



I, Kenneth H. Bengtson, a Civil Engineer and Registered Land Surveyor in Kansas, do hereby certify that I have been in responsible charge of surveying and platting of WILLOWBEND NORTH ADDITION, an addition to Wichita, Sedgwick County, Kansas, into lots, blocks, streets, and reserves the same being accurately set forth in the accompanying plat and described herein:

A tract of land lying in the Northeast Quarter, Section 30, Township 26 South, Range 2 East of the 6TH. P.M., Sedgwick County, Kansas, more particularly described as follows:

Beginning at a point on the West line of said Northeast Quarter, said point lying 50 feet South of the North line of said Northeast Quarter; thence N 85° 55' 29" E, 296.24 feet parallel with said North line; thence S 00° 45' 14" E, 45.00 feet; thence S 88° 55' 29" W, 556.03 feet; thence S 01° 04' 31" E, 217.00 feet; thence S 88° 08' 41" E, 186.30 feet; thence S 89° 12' 19" W, 46.58 feet; thence S 29° 05' 30" W, 351.66 feet; thence S 01° 20' 29" E, 346.63 feet; thence S 89° 12' 19" W, 336.50 feet to a point lying on said West line; thence N 00° 47' 41" W, 913.32 feet along said West line to the point of beginning.

I hereby certify that the details of this plat are correct to the best of my knowledge and belief this 18 day of May 1997.

Kenneth H. Bengtson, P.E., R.L.S. #922
Mid-Kansas Engineering Consultants, Inc.
411 North Webb Road
Wichita, KS 67206

Know all men by these presents that we the undersigned property owners of the land as above set forth in the Civil Engineer's and Registered Land Surveyor's Certificate, have caused the same to be surveyed and platted into lots, blocks, streets and reserves the same to be known as "WILLOWBEND NORTH ADDITION", an addition to Sedgwick County, Kansas. The streets are hereby dedicated to and for the use of the public. Easements for the construction and maintenance of streets, utilities and drainage, are hereby granted to the public.

Reserve A is platted for private streets, driveways, emergency vehicle access, utilities, drainage, open space, landscaping, irrigation, and walkways. Reserves B, C, D, and E are platted for open space, landscaping, lighting, irrigation, median, and monuments. Reserves F, G, and H are platted for open space, landscaping, irrigation, and entry monuments. Reserves I and J are platted for open space, landscaping, lighting, irrigation, and monuments. The reserves shall be owned and maintained by the homeowners association.

All abutters right of access to or from 45th Street North over and across the North line of WILLOWBEND NORTH ADDITION, are hereby granted to the governing body.

The wall easement is platted for the construction and maintenance of a private wall, utilities may cross the wall easement.

J.M.C., INC.
Jerry D. Michaelis, President

STATE OF KANSAS)
)ss.
SEDGWICK COUNTY)

BE IT REMEMBERED, that on this 18th day of May 1997, before me the undersigned, a Notary Public in and for the County and State aforesaid, came Jerry D. Michaelis, President, J.M.C., Inc., to me personally known to be the same person who executed the foregoing instrument of writing and duly acknowledged the execution of the same.

IN WITNESS WHEREOF, I have hereunto set my hand and affixed my official seal, the day and year last above written.

Katherine S. Bauman
Notary Public
Katherine S. Bauman
My appointment expires: 1-24-99

We, State Bank of Colwich, holders of a mortgage on the above described property, do hereby consent to the plat of "WILLOWBEND NORTH ADDITION".

State Bank of Colwich

Brad E. Vaeger, S.V.P.
Brad E. Vaeger, Senior Vice President

STATE OF KANSAS)
)ss.
SEDGWICK COUNTY)

BE IT REMEMBERED, that on this 18th day of May 1997, before me the undersigned, a Notary Public in and for the County and State aforesaid, came Brad E. Vaeger, S.V.P., State Bank of Colwich, to me personally known to be the same person who executed the foregoing instrument of writing and duly acknowledged the execution of the same.

IN WITNESS WHEREOF, I have hereunto set my hand and affixed my official seal, the day and year last above written.

Lisa Gartner
Notary Public
Lisa Gartner
My appointment expires: 5-1-2000

Jerry D. Michaelis
Jerry D. Michaelis

STATE OF KANSAS)
)ss.
SEDGWICK COUNTY)

BE IT REMEMBERED, that on this 18th day of May 1997, before me the undersigned, a Notary Public in and for the County and State aforesaid, came Jerry D. Michaelis to me personally known to be the same person who executed the foregoing instrument of writing and duly acknowledged the execution of the same.

IN WITNESS WHEREOF, I have hereunto set my hand and affixed my official seal, the day and year last above written.

Lisa Gartner
Notary Public
Lisa Gartner
My appointment expires: 5-1-2000

This plat of "WILLOWBEND NORTH ADDITION", has been submitted to and approved by the Wichita-Sedgwick County Metropolitan Area Planning Commission, Wichita, Kansas.

Dated this 18 day of May 1997.

WICHITA-SEDGWICK COUNTY METROPOLITAN PLANNING COMMISSION

John C. Frye, Chairman

Marvin S. Krout, Secretary

This plat approved and all dedications shown thereon, if any, accepted by the City Council of the City of Wichita, Kansas, this 10th day of JUNE 1997.

Bob Knight, Mayor

Pat Burnett, City Clerk

Entered on transfer record this 18 day of May 1997.

James Alford, County Clerk

STATE OF KANSAS)
)ss.
SEDGWICK COUNTY)

This is to certify that this instrument was filed for record in the Register of Deeds office this 18 day of May 1997.

Larry Consover, Register of Deeds

Michael D. Hurtt, Deputy

K:\CIVIL\960824\960824.FIN.PLT\960824-1 Tue May 13 12:00:30 1997