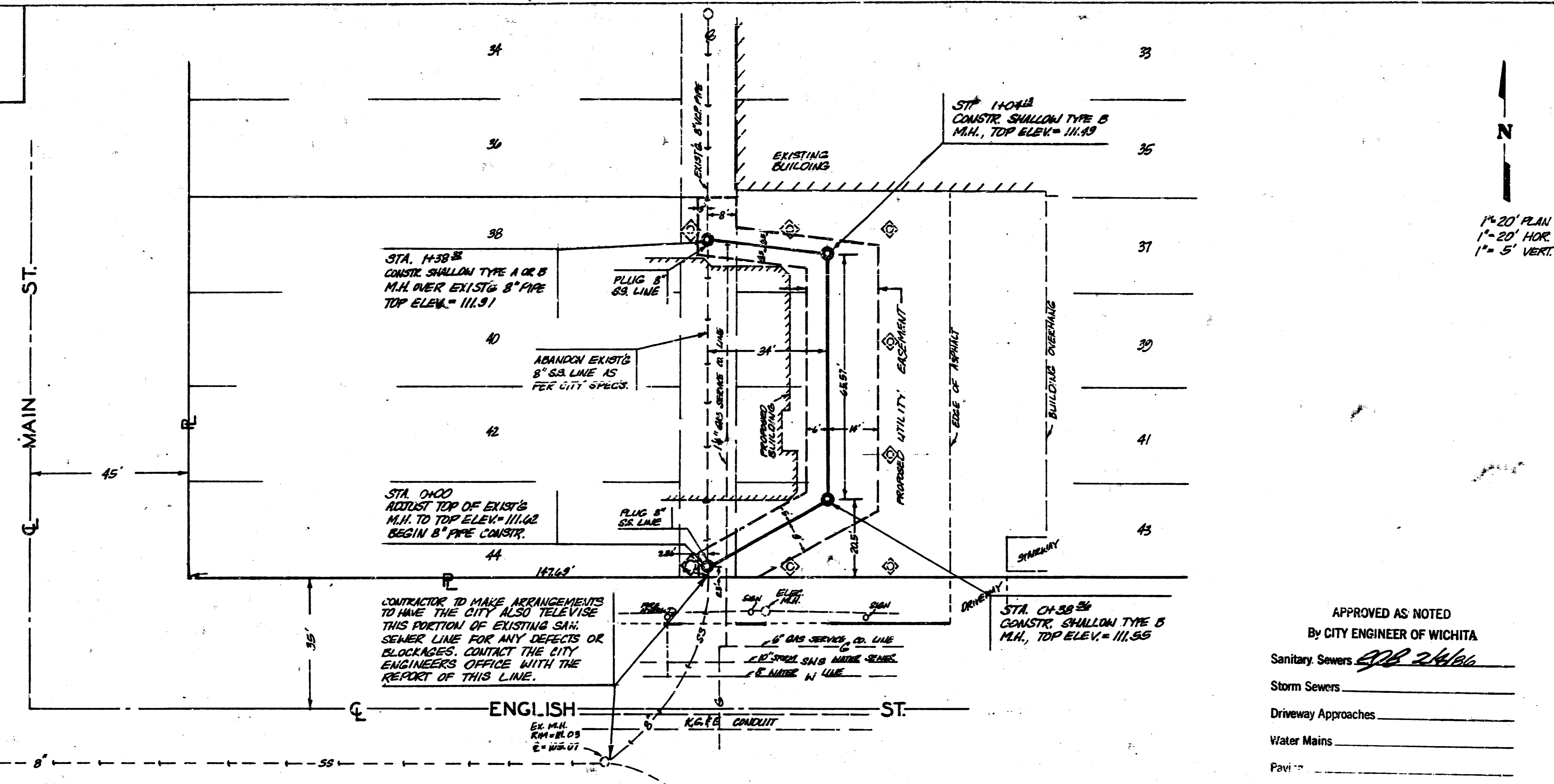
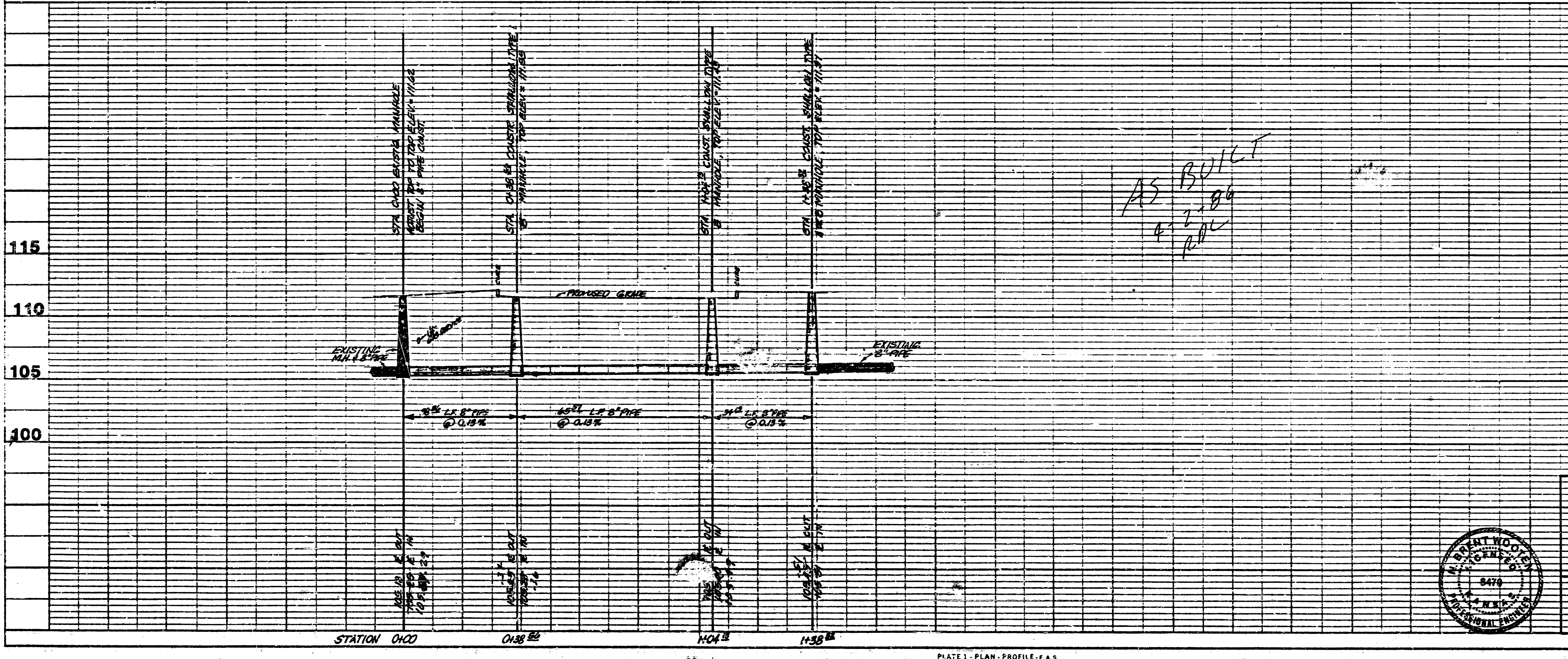


BENCH MARK
ELEVATION = 115.83 CITY DATUM
CUT AT WEST END ON TOP OF RETAINING WALL AT THE N.E. CORNER OF LOT 32 ON MAIN IN GRIFFENSTEIN'S ADD.



CONTRACTOR TO MAKE ARRANGEMENTS TO HAVE THE CITY ALSO TELEVIEW THIS PORTION OF EXISTING SANITARY SEWER LINE FOR ANY DEFECTS OR BLOCKAGES. CONTACT THE CITY ENGINEER'S OFFICE WITH THE REPORT OF THIS LINE.

NOTE TO CONTRACTOR
This project will be constructed under the supervision of the CITY ENGINEER and conforming to the SPECIFICATIONS of the CITY OF WICHITA. The CONTRACTOR will pay the City of Wichita for all costs of plan review, inspection and booking per contract.



JANUARY 1986

SANITARY SEWER EXTENSION TO SERVE FIDELITY SAVINGS AT MAIN AND ENGLISH
PROJECT NO. 488-78-245-80000-000-000-028
CITY OF WICHITA, KANSAS

BAUGHMAN COMPANY, P.A.
SURVEYING & ENGINEERING
30888-7871 - 350 CALPA - WICHITA, KANSAS 67211

FILMED FROM THE BEST AVAILABLE COPY