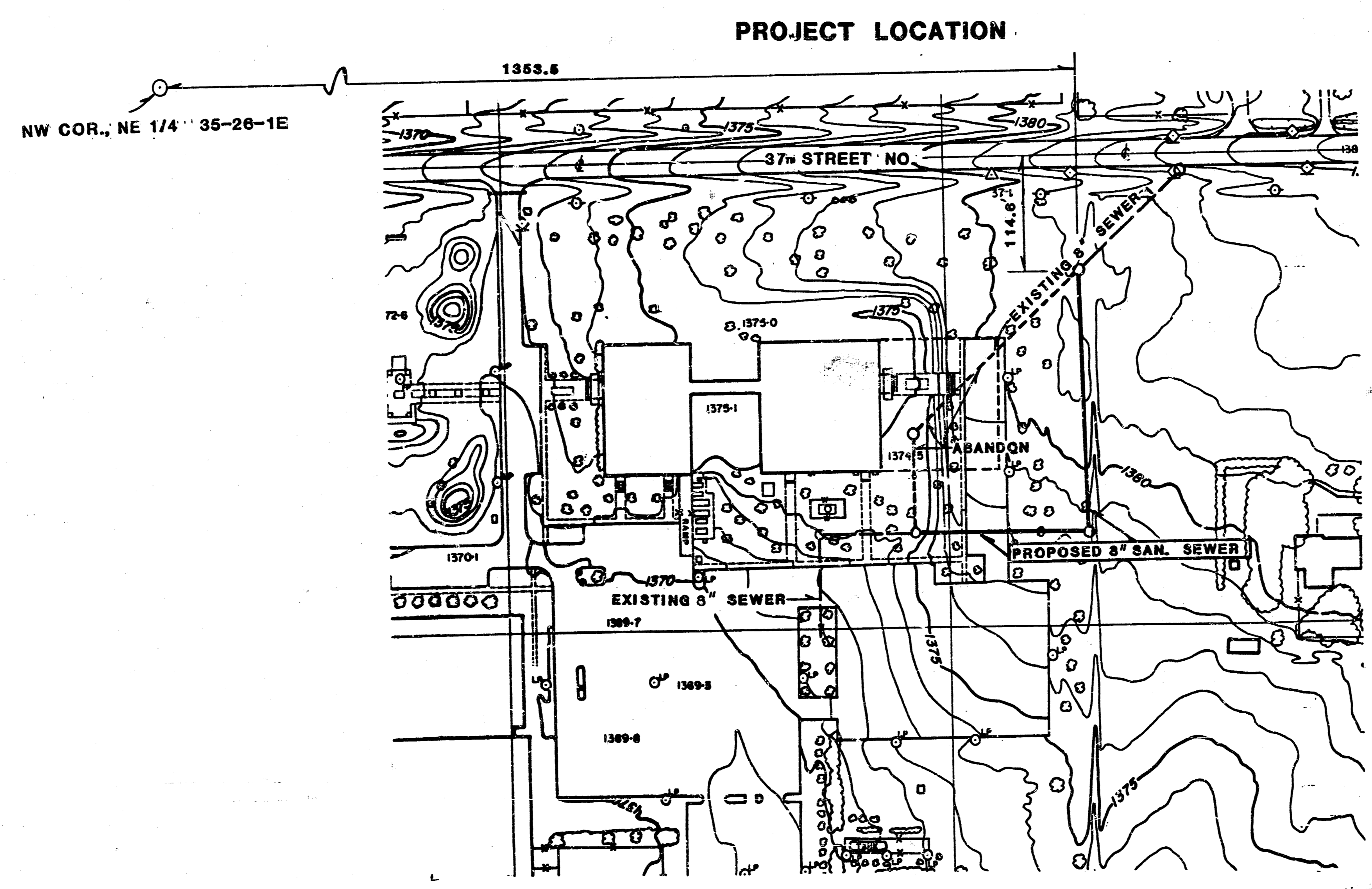


PRIVATE SANITARY SEWER RELOCATION
FOR
KOCH INDUSTRIES
WICHITA, KANSAS

PROJECT NO.
468-76-245-80001-000-000-118



GENERAL NOTES

CONTRACTOR SHALL BE RESPONSIBLE FOR VERIFYING ANY UNDERGROUND UTILITY OR MAIN LINES AS NECESSARY PRIOR TO PROCEEDING WITH THE CONSTRUCTION.

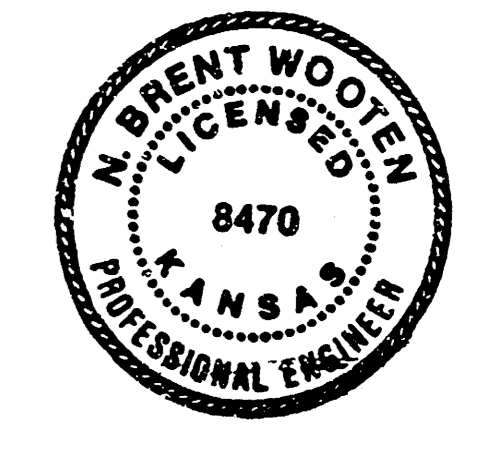
FLOW IN THE EXISTING 8" LINE SHALL BE MAINTAINED DURING CONSTRUCTION OF THE NEW SEWER LINE.

APPROPRIATE ARRANGEMENTS SHALL BE MADE BY THE CONTRACTOR WITH KOCH INDUSTRIES FOR CONSTRUCTION OF THE LINE ACROSS THE EXISTING PARKING LOT PAVEMENT. IF THE PAVEMENT NEEDS TO BE REPLACED THEN THE CONTRACTOR SHALL REPLACE THE ASPHALT PAVEMENT WITH THE SAME THICKNESS AS WAS REMOVED.

ABANDONMENT AND REMOVAL OF EXISTING LINE SHALL BE DONE SO AS TO KOCH INDUSTRIES REQUIREMENTS. THE EXISTING LINE SHALL BE PLUGGED AT EACH MANHOLE AS INDICATED ON THE PLAN PER CITY SPECS.

*AS BUILT
 PDC
 B-187*

APPROVED AS NOTED
 By CITY ENGINEER OF WICHITA
 Sanitary Sewers *AWB 5/15/87*
 Storm Sewers _____
 Driveway Approaches _____
 Water Mains _____
 Part: _____



NOTE TO CONTRACTOR
 This project will be constructed using the specifications of the CITY ENGINEER and conforming to the SPECIFICATIONS of the CITY OF WICHITA. The CONTRACTOR will pay the City of Wichita for all costs of plan review, engineering, and booking per contract.

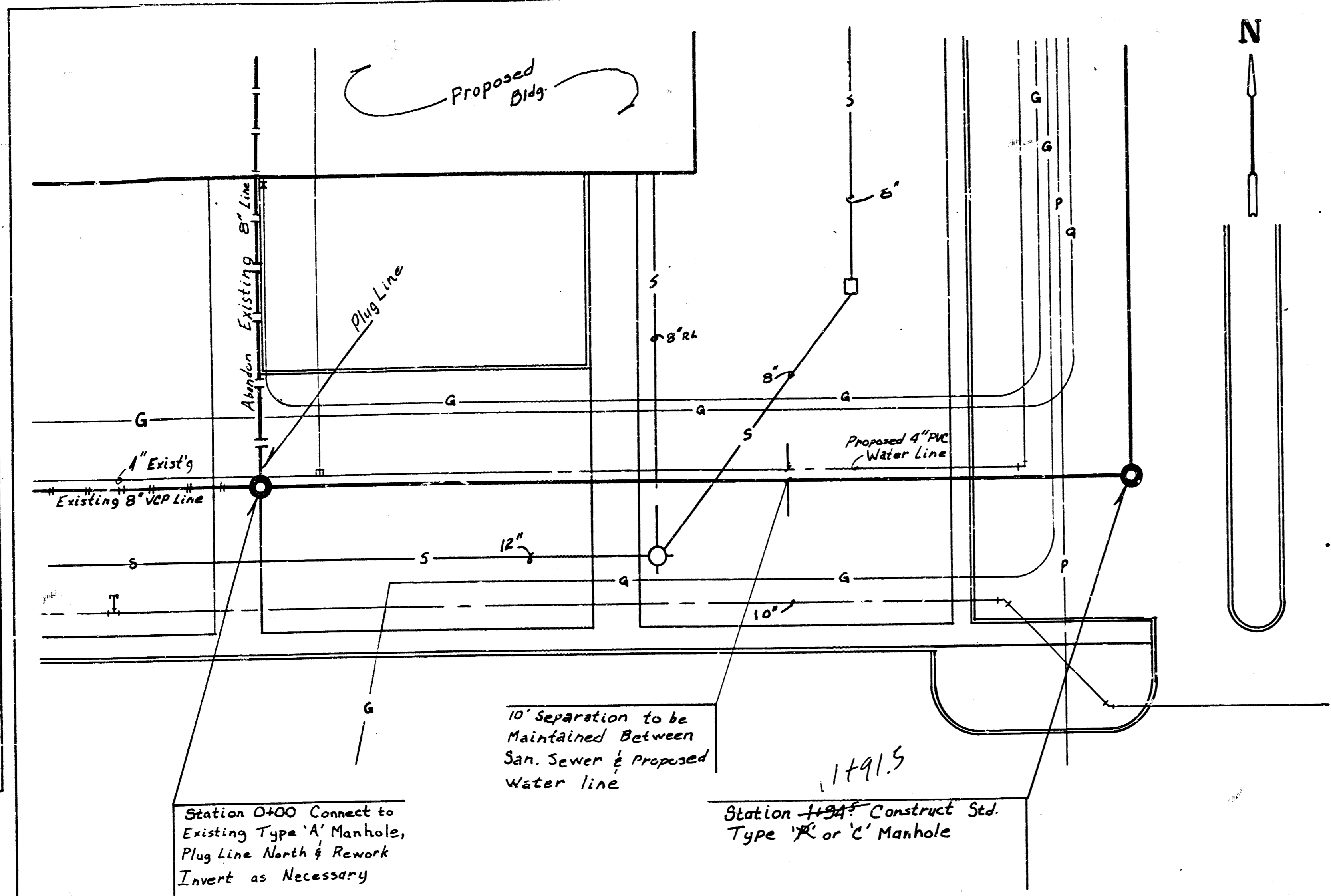
BAUGHMAN COMPANY, P.A.
 SURVEYING & ENGINEERING
 310-262-7271 • 315 ELLIS • WICHITA, KANSAS 67211

DATE	BY	APPROVED	DATE	SCALE
LIBW	DMH		5/14/87	

Sheet 1 of 2

FILMED FROM THE BEST AVAILABLE COPY

DATE: _____ BY: _____
 SURVEYED: _____
 NOTE BOOK: _____
 NO. OF WAY CHECKED: _____



Station 0+00 Connect to Existing Type 'A' Manhole, Plug Line North & Rework Invert as Necessary

Station 1+94³ Construct Std. Type 'R' or 'C' Manhole

10' Separation to be Maintained Between San. Sewer & Proposed Water Line

Benchmark City of Wichita Benchmark Disc, east end of headwall to R.C.B. on 37th street, 34' west and 22.5' south of intersection of E's Oliver & 37th st. north Elev. 184.63 city datum

DATE: _____ BY: _____
 SURVEYED: _____
 NOTE BOOK: _____
 NO. OF WAY CHECKED: _____

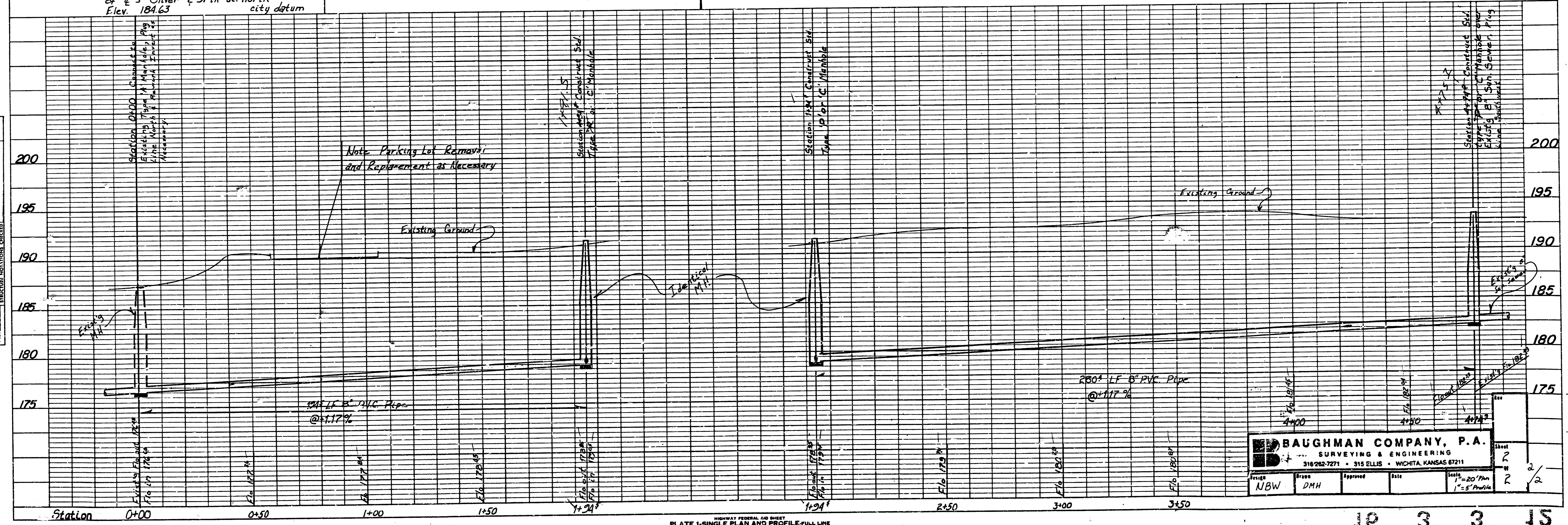


PLATE 1-SINGLE PLAN AND PROFILE-FULL LINE
 PRINTED IN U.S.A.

BAUGHMAN COMPANY, P.A.
 SURVEYING & ENGINEERING
 318-262-7271 • 315 ELLIS • WICHITA, KANSAS 67211

Project: NBW	Draft: DMH	Approved: _____	Date: _____
--------------	------------	-----------------	-------------

FILED FROM THE BEST AVAILABLE COPY