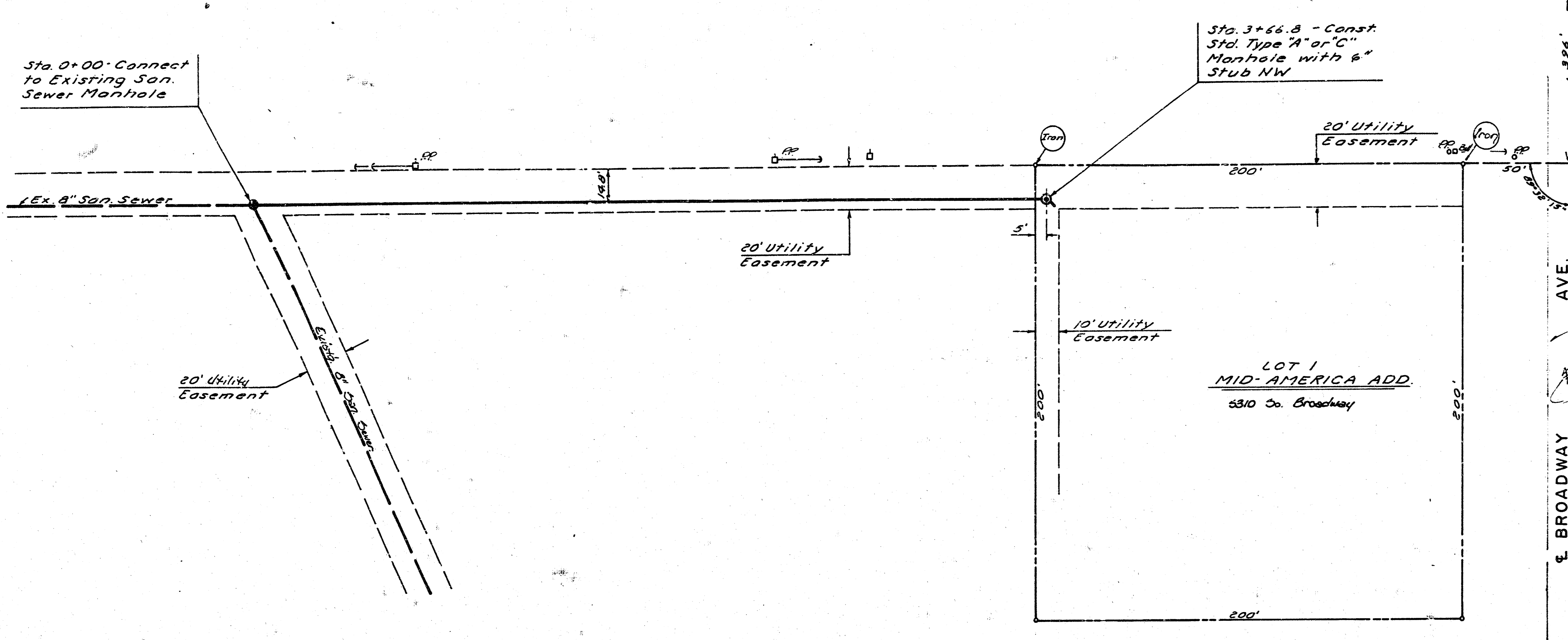


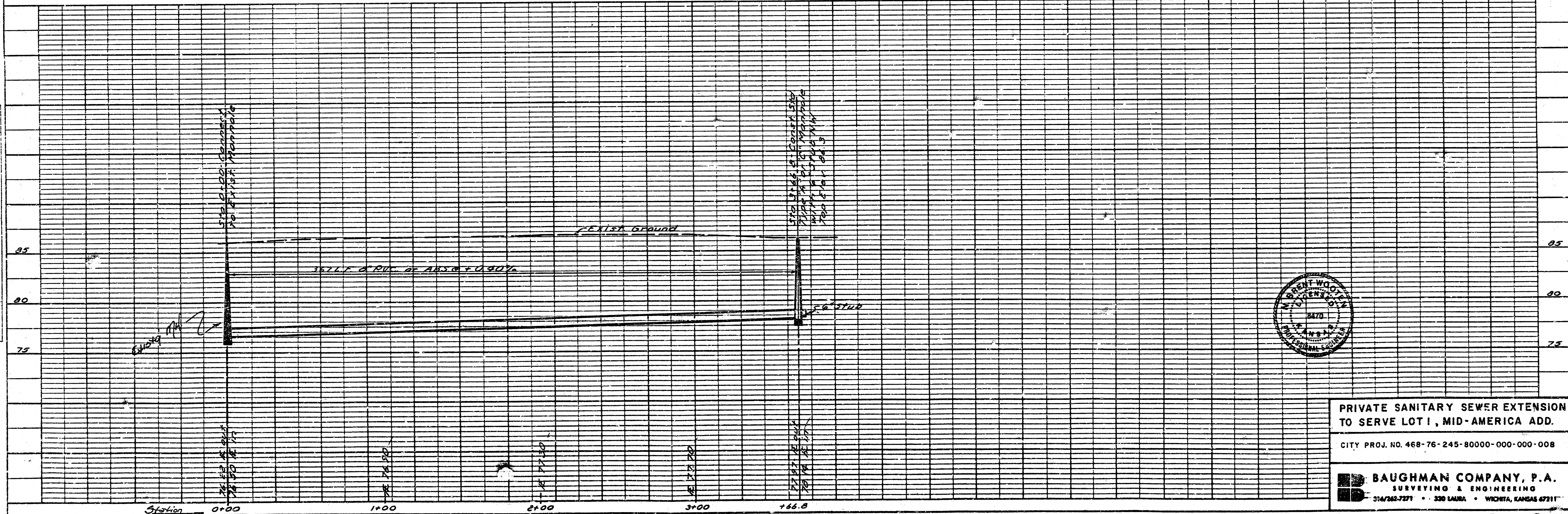
PLAN  
 SURVEYED BY: [ ]  
 DATED: [ ]  
 NOTE BOOK NO. [ ]  
 PLOT OR WAY (1/4) AC. NO. [ ]



THE CONTRACTOR SHALL BE RESPONSIBLE FOR PRESERVING PROPERTY IRONS. THE CONTRACTOR SHALL BE REQUIRED TO RE-ESTABLISH ANY PROPERTY IRONS WHICH ARE DAMAGED OR DESTROYED BY HIS CONSTRUCTION OPERATIONS. SUCH IRONS SHALL BE RE-ESTABLISHED BY A LICENSED LAND SURVEYOR OR A LICENSED PROFESSIONAL ENGINEER IN ACCORDANCE WITH STATE LAWS.

7-18-82  
 APPROVED AS NOTED  
 By CITY ENGINEER OF WICHITA  
 Sanitary Sewers P.L.S.  
 Storm Sewers \_\_\_\_\_  
 Driveway Approaches \_\_\_\_\_

PROFILE  
 SURVEYED BY: [ ]  
 DATED: [ ]  
 NOTE BOOK NO. [ ]  
 PLOT OR WAY (1/4) AC. NO. [ ]



PRIVATE SANITARY SEWER EXTENSION TO SERVE LOT 1, MID-AMERICA ADD.  
 CITY PROJ. NO. 468-76-245-80000-000-000-008  
 BAUGHMAN COMPANY, P.A.  
 SURVEYING & ENGINEERING  
 314/263-7271 • 330 LAURA • WICHITA, KANSAS 67211

PLATE 1 - PLAN - PROFILE - P.A.S.  
 CLEARPRINT PAPER CO. & 7 CAL.  
 NO. 10090-1

FILMED FROM THE BEST AVAILABLE COPY