

4/21/2016 3:33:39 PM

PLUMBING FIXTURE SCHEDULE

MARK	FIXTURE TYPE	MFG	MODEL	MATERIAL	COLOR	SIZE (IN)	MOUNTING	VALVE		PIPE ROUGH-IN SIZE				REMARKS	
								MFG	MODEL	GPM/GPF	FINISH	P-TRAP	WASTE		VENT
EWS-1	EMERGENCY WASH STATION	STINGRAY	SS510	SS	ST	SEE PLANS	FLOOR	--	--	--	--	--	1 1/4"	--	1,2,3
EWH-1	EMERGENCY WASH STATION WATER HEATER	STINGRAY	SS300	--	ST	SEE PLANS	FLOOR	--	--	--	--	--	1 1/4"	--	4,5
HB-1	HOSE BIBB	ZURN	Z1341	BR	ST	--	WALL	--	--	--	--	--	3/4"	--	

PLUMBING FIXTURE SCHEDULE ABBREVIATIONS

MARK	ABBREVIATION
ST	MFG STANDARD FINISH
NB	NICKEL BRONZE
SS	STAINLESS STEEL
CI	CAST IRON
BR	BRASS

PLUMBING REMARKS

REMARKS	DESCRIPTION
1	PROVIDE SHUT-OFF VALVE IN TEMPERED WATER SUPPLY LINE TO FIXTURE.
2	TEMPERED WATER (60°-100°) SHALL BE PROVIDED TO THE FIXTURE.
3	INSTALL FIXTURE PER MANUFACTURERS RECOMMENDATIONS
4	INSTALL WATER HEATER PER MANUFACTURERS RECOMMENDATIONS.
5	PROVIDE SHUT-OFF VALVE IN CW CONNECTION TO WATER HEATER.

PIPING SYSTEMS

WORK INCLUDED: INSTALLATION OF ALL PIPING SYSTEMS.

DOMESTIC WATER: TYPE "L" HARD COPPER ASME B88 PIPE. WROUGHT COPPER ASTM B16.22 FITTINGS. SWEAT 95-5 TIN ANTIMONY SOLDER JOINTS. USE TYPE "K" COPPER BELOW GRADE. PLUMBING INSTALLER SHALL MINIMIZE PIPING JOINTS BELOW FLOOR. WHERE JOINTS ARE NECESSARY, ALL JOINTS SHALL BE BRAZED WITH SILVER BEARING SOLDER.

SOIL, WASTE AND VENT

PVC PIPE: ASTM D2665, SCHEDULE 40 DWV PVC PIPE WITH ASTM D3311. PVC FITTINGS. JOINTS TO BE ASTM D2855, SOLVENT WELD WITH ASTM D2564 SOLVENT CEMENT.

PIPE HANGERS AND SUPPORTS:

PROVIDE PIPE HANGERS AND SUPPORTS DESIGNED TO CARRY THE LOAD WITH A SAFETY FACTOR OF 5 OR LARGER. HANGERS OVER SIZED TO FIT PIPE AND INSULATION ON INSULATED LINES. COPPER HANGERS SHALL BE USED FOR SUPPORT OF COPPER PIPING.

PIPE HANGER SPACING:

5'-0" ON CENTER FOR CAST IRON SOIL PIPE, 4'-0" ON CENTER FOR ABS & PVC PLASTIC PIPE.
6'-0" ON CENTER FOR COPPER, IRON AND STEEL PIPING UP TO 1 1/4" DIAMETER.
10'-0" ON CENTER FOR COPPER, IRON AND STEEL PIPING ABOVE 1 1/2" DIAMETER AND LARGER.

VALVES & COCKS:

GENERAL: ALL VALVES OF A GIVEN TYPE SHALL BE OF ONE MANUFACTURER. PROVIDE ALL VALVES WHERE REQUIRED FOR OPERATION, SERVICE AND MAINTENANCE OF SYSTEMS AND EQUIPMENT. 150 PSIG WORKING PRESSURE OR FOR PRESSURE AND SERVICE SPECIFIED HEREIN. ALL VALVES SHALL BE OF A SUITABLE TYPE FOR INTENDED SERVICE.

SWEAT JOINTS VALVES IN COPPER PIPING. PROTECT VALVES FROM HEAT DURING INSTALLATION. ALL VALVES IN INSULATED PIPING SYSTEM WILL BE INSTALLED WITH OPERATING HANDLES ABOVE INSULATION THROUGH USE OF EXTENSION STEMS, EXTENDED NECKS OR RISING STEMS.

BALL VALVES: BRONZE, SWING-AWAY DESIGN, FULL PORT, CHROME PLATED BRONZE BALL WITH TEFLON SEATS, 125 SWP, 400 WOG SCREWED OR SOLDERED ENDS.

DRAIN VALVES: BRONZE, COMPRESSION STOP WITH NIPPLE AND CAP OR HOSE THREAD.

INSULATION

WORK INCLUDED: ALL PIPING SYSTEM INSULATION

ACCEPTABLE MANUFACTURERS:

- A. FIBERGLASS INSULATION
- 1. OWENS CORNING
- 2. JOHNS-MANVILLE
- 3. KNAUF
- 4. CERTAINTED

DOMESTIC COLD WATER AND HOT WATER PIPING:

INSULATE ALL DOMESTIC HOT WATER AND COLD WATER PIPING WITH FIBERGLASS SSK-11 ASJ PIPE INSULATION WITH SELF SEALING LAP. THE MAINS, MANIFOLDS, AND VALVES SHALL BE INSULATED.

ALL INSULATION SHALL BE CONTINUOUS THROUGH WALL AND CEILING OPENINGS AND SLEEVES. INSULATION ON ALL COLD SURFACES WHERE VAPOR BARRIER JACKETS ARE USED, WILL BE APPLIED WITH A CONTINUOUS, UNBROKEN VAPOR SEAL. HANGERS, SUPPORTS, ANCHORS, ETC., WHICH ARE SECURED DIRECTLY TO COLD SURFACES MUST BE ADEQUATELY INSULATED AND VAPOR-SEALED TO PREVENT CONDENSATION. CRUSHING OF INSULATION AT HANGERS IS NOT PERMITTED AND WILL REQUIRE PIPE SADDLES OR HIGH DENSITY FOAM GLASS INSERTS. PIPE SADDLES SHALL BE INSULATED AS REQUIRED TO COMPLETE A CONTINUOUS UNBROKEN INSULATION OF PIPE AS SPECIFIED FOR THE PIPING BEING SUPPORTED. SPECIFIED ADHESIVES MASTICS AND COATINGS SHALL BE APPLIED AT THE MANUFACTURER'S RECOMMENDED MINIMUM COVERAGE PER GALLON.

FITTINGS:

ALL FITTINGS, VALVES, FLANGES, SHALL BE COVERED WITH PVC PRE-MOLDED ONE PIECE FITTING COVERS UTILIZING FACTORY SUPPLIED HI-LO TEMPERATURE INSULATION INSERT. INSULATION INSERT SHALL BE APPLIED TO THE FITTING WITH ENDS OF INSERT TUCKED SNUGLY INTO THROAT OF FITTING AND EDGES ADJACENT TO PIPE. NO GAPS SHALL OCCUR BETWEEN FITTING INSULATION AND PIPE INSULATION. SECURE PVC PRE-MOLDED

INSULATION

1/2" DOMESTIC COLD WATER

COVER TO INSULATED FITTING BY STAPLING AND TAPING EDGES OF COVER WITH ZESTON COLOR MATCHING Z-TAPE. COLD WATER SYSTEMS, FITTINGS, VALVES, FLANGES, PVC PRE-MOLDED FITTING COVER SHALL BE SECURED WITH ZESTON VAPOR BARRIER ADHESIVE OR EQUAL (FOSTERS 85-20). CIRCUMFERENTIAL EDGES OF COVER SHALL BE WRAPPED WITH ZESTON COLOR MATCHING Z-TAPE. THE TAPE SHALL EXTEND OVER ADJACENT PIPE INSULATION AND OVERLAP ITSELF AT LEAST 2" ON THE DOWNWARD SIDE.

PIPING INSTALLATION:

PIPING INSTALLATION: EVENLY SPACED. RUN HARMONIOUSLY WITH THE BUILDING WALLS AND CEILINGS. INSTALL IN THE DESIRED LOCATION AS INDICATED ON DRAWINGS. CERTAIN BRANCH PIPING MAY BE REROUTED, PROVIDING REROUTING DOES NOT ALTER INTENDED DESIGN. TAKEOFFS FROM WATER MAINS SHALL BE TYPICALLY FROM BOTTOM OF PIPING (UNLESS PLANS SHOW DIFFERENTLY). INSTALLED IN STRICT ACCORDANCE WITH BEST PIPING PRACTICE. PIPING NOT SIZED ON DRAWINGS SHALL BE SIZED BY THE ENGINEER. REDUCTION IN PIPE SIZE MADE WITH ECCENTRIC REDUCERS IN HORIZONTAL LINES TO AVOID AIR AND WATER POCKETS.

PROVIDE UNIONS AND ISOLATION VALVES AT ALL EQUIPMENT TO FACILITATE REMOVAL. USE NON-CONDUCTING FITTINGS WHERE JOINTING DISSIMILAR METALS. SLOPE ALL DRAINAGE PIPING 1/4" PER FOOT (1/8" PER FOOT FOR DWV PIPING 4" AND LARGER). ARRANGE PIPING IN A MANNER TO ALLOW FOR EXPANSION AND CONTRACTION. THOROUGHLY CLEAN BEFORE INSTALLING - NO SAND, DIRT, FILINGS, ETC.

PREPARATION: ALL TESTING OF PIPING SHALL BE COMPLETED AND ALL LEAKS REPAIRED PRIOR TO APPLICATION OF INSULATION.

PLUMBING SYSTEMS/PLUMBING FIXTURES

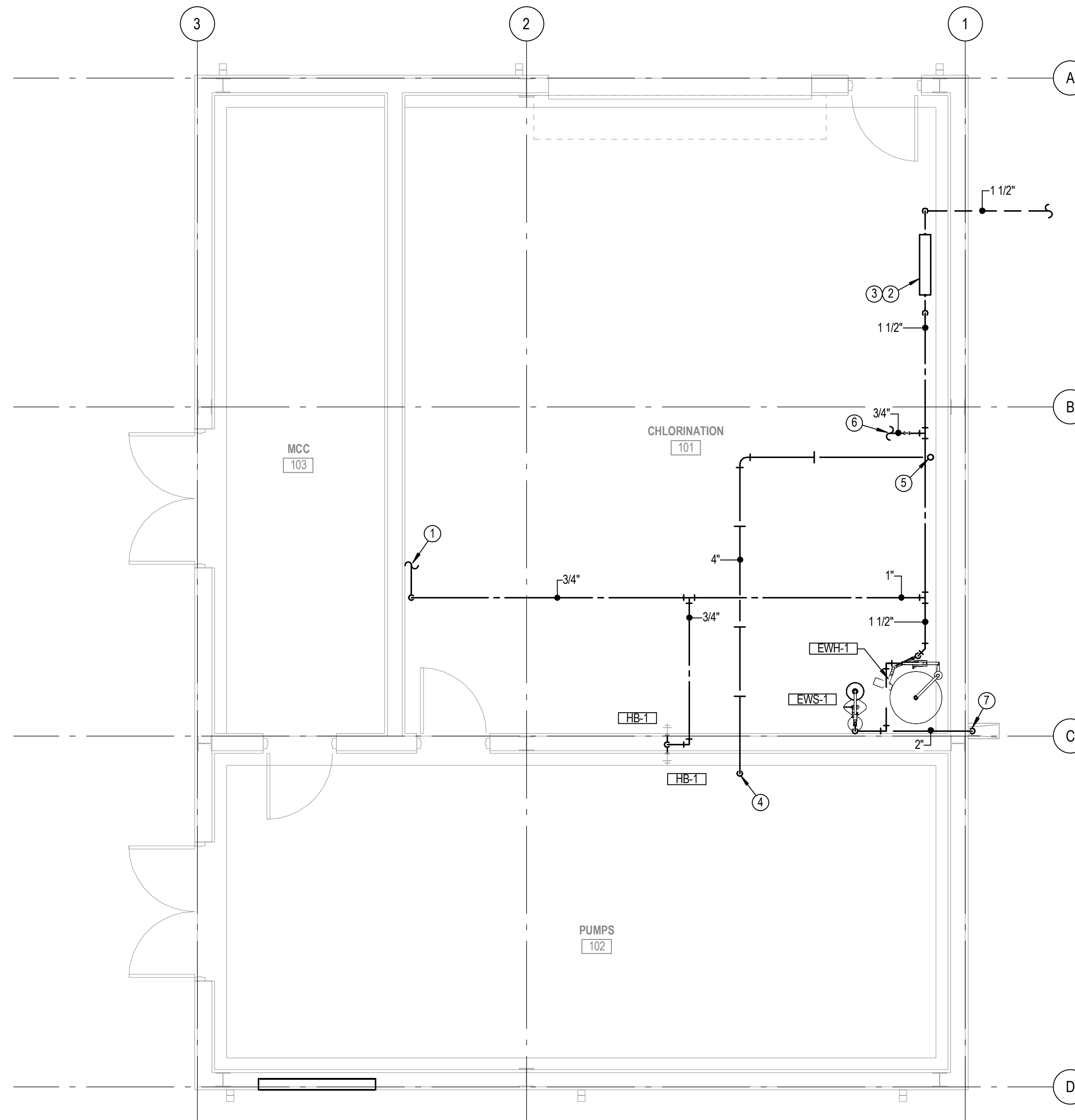
WORK INCLUDED: ALL PLUMBING SYSTEMS AND PLUMBING FIXTURES AND TRIM.

PLUMBING INSTALLATION:

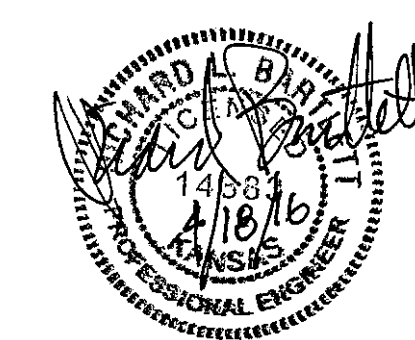
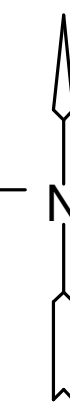
PROVIDE TRAPS AT ALL FIXTURE WASTE CONNECTIONS. PROVIDE STOPS AT ALL INDIVIDUAL PLUMBING FIXTURES AND EQUIPMENT. INSTALL ADDITIONAL WALL SUPPORT FRAMING FOR ALL WALL HUNG FIXTURES (WHERE CARRIERS ARE NOT PROVIDED).

KEYED NOTES P1.1

1. DOMESTIC WATER LINE TO BE EXTENDED TO CONNECT TO PROCESS EQUIPMENT IN THIS AREA. SEE MANUFACTURERS EQUIPMENT CONNECTION REQUIREMENTS FOR ADDITIONAL INFORMATION.
2. M.C. TO PROVIDE AND INSTALL A WATTS MODEL LF009 (OR EQUAL) BACKFLOW PREVENTER AS SHOWN.
3. PROVIDE BACKFLOW PREVENTOR WITH WATTS MODEL 009M2 AIR GAP FITTING. ROUTE DRAIN PIPING TO OUTDOORS.
4. EXTEND WASTE LINE TO WET WELL AND DISCHARGE WITH DOWN TUNED ELBOW. DISCHARGE FLOWLINE SHALL BE ABOVE 1259.75.
5. EXTEND 4" WASTE LINE UP THROUGH FLOOR IN THIS AREA. TERMINATE 1'-0" ABOVE FINISH FLOOR. COORDINATE EXACT LOCATION WITH WATER SOFTENER EQUIPMENT.
6. PROVIDE 3/4" CW LINE WITH SHUT-OFF VALVE TO WATER SOFTENING SYSTEM.
7. EXTEND 2" DRAIN LINE FROM EYE WASH STATION TO EXTERIOR WALL. TERMINATE THRU WALL WITH DOWN TURNED ELBOW AND SPLASH BLOCK.



A WATER & GAS PLAN
1/4" = 1'-0"
0' 1' 2' 4' 8'



RE-USE WATER PUMP STATION
 TO SERVE SPIRT AEROSYSTEMS
 CITY OF WICHITA, KANSAS

©2016 MKEC Engineering
All Rights Reserved
www.mkec.com
These drawings and their contents, including, but not limited to, all concepts, designs, & ideas are the exclusive property of MKEC Engineering (MKEC), and may not be used or reproduced in any way without the express consent of MKEC.

PLUMBING PLANS

PROJECT NO.	468-85112	
DATE	04/18/16	
SCALE	AS NOTED	
DESIGNED	DRAWN	CHECKED
RLB	CJK	RLB

ISSUED FOR CONSTRUCTION	04/18/16	
NO.	REVISION	DATE
SHEET NO.		P1.0

C:\Users\coveh\Documents\15925 - COW WATER PUMP - MEP_coveh.rvt