



SUBMITTAL ID: 013-R1

Project Owner: City of Wichita
Project Title: Re-Use Water PS (to serve Spirit AeroSystems)
Project Number: Wildcat Job 7127 / COW 468-85112
Subject: Resilient Seated Gate Valves

Manufacturer/Supplier: Kennedy Valves - Mellen & Associates

Specification Section: Gate Valves: (1) 10" w/ Handwheel operator and (3) 8" w/ Handwheel operator

Submitted By: Tyler Dehn - Wildcat Construction Co., Inc.

SUBMITTAL DATA	
<input checked="" type="checkbox"/>	FOR APPROVAL
<input type="checkbox"/>	REVIEWED
<input type="checkbox"/>	REVIEWED AS NOTED
<input type="checkbox"/>	REVISE AND RESUBMIT
FOR GENERAL COMPLIANCE WITH CONTRACT DOCUMENTS.	
DATE <u>6-6-2016</u>	BY <u>Tyler Dehn</u>
WILDCAT CONSTRUCTION CO., INC.	

MKEC ENGINEERING, INC.	
411 N. WEBB ROAD • WICHITA, KS 67206	
<input checked="" type="checkbox"/> Reviewed	<input type="checkbox"/> Revise and Resubmit
<input type="checkbox"/> Reviewed as Noted	<input type="checkbox"/> Rejected
<input type="checkbox"/> Not Required by the Contract Documents	
Reviewed for conformance with the design concept of the Project and compliance with the information given in the Contract Documents. Contractor is responsible for dimensions to be confirmed and correlated at the job site; for information that pertains solely to the fabrication process or to techniques of construction; and for coordination of the work of all trades.	
BY <u>Bryce Z. Banks</u>	DATE <u>6-6-16</u>

June 6, 2016

APPROVAL DRAWINGS

PROJECT NAME

RE-USE WATER PUMP STATION
WICHITA, KS

VALVE TYPE

Resilient Seated Gate Valve

(1) 10" Resilient Seated Gate Valve per C-509, Flanged Ends, Non-Rising Stem, Handwheel, Fig 8561A

(3) 8" Resilient Seated Gate Valve per C-509, Flanged Ends, Non-Rising Stem, Handwheel, Fig 8561A

CONTRACTOR: WILDCAT CONSTRUCTION CO., INC
3219 WEST MAY
WICHITA, KS 67213
719-439-4107
MAIN CONTACT:
Tyler J. Dehn
Project Manager/Estimator
tyler.dehn@wildcat.net

LOCAL SUPPLIER: MELLEN & ASSOCIATES, INC
3404 SOUTH 11TH ST
COUNCIL BLUFFS, IA 51501
712-322-9333

MANUFACTURER: Kennedy Valve
1021 East Water Street
Elmira, New York 149014
(607) 734-2211



KENNEDY VALVE

Plant and Industrial Group

1021 East Water Street
Elmira, New York 14901
Telephone (607) 734-2211
Fax (607) 734-3288

Please send any replies to: Sandra Reser

Date: June 6, 2016

Customer Name: WILDCAT CONSTRUCTION CO., INC

Project Name: City of Wichita Re-Use Pump Station - KS

Dear Customer:

This is the order submittal for the project listed above. This submittal contains the drawings and data sheets for the Kennedy Valve products purchased on the order and listed below.

1. 10110008561ASS Resilient Seated Gate Valve
2. 10108008561ASS Resilient Seated Gate Valve

Manufacturing is currently being held for this order pending receipt of purchase order, customer approval and release.

Please contact me should you have any questions or comments concerning the contents of this submittal.

Regards,

Sandra Reser

Sandra Reser
Mellen & Associates, Inc.
Ph (816) 836-0202
Sandra@melleninc.com

Enclosure(s):

Product Description:	Kennedy Valve Resilient Seated Gate Valves
Drawing No.:	CAT910080A
Drawing Date/Rev.:	
Technical Data Sheets:	B13369ER80K Epoxy
MSDS Sheets:	
O&M Manuals:	
Re-submittal comments:	



COMMITTED TO ENVIRONMENTAL RESPONSIBILITY

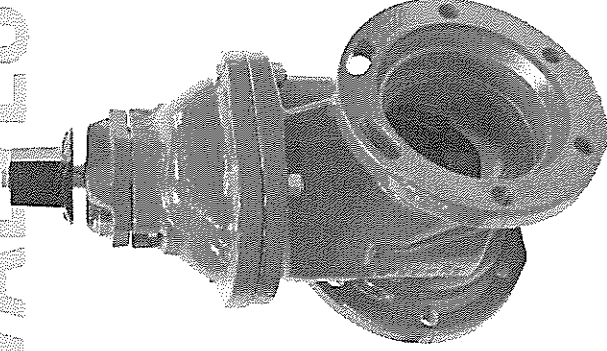
KENNEDY VALVE COMPANY IS COMMITTED TO PROTECTING OUR NATURAL RESOURCES THROUGH FOUR-STEP MATERIALS RECYCLING PRACTICES. IMPROVING THE USE OF SOLID RECYCLED CONTENT IN OUR BRIGANDS AND VALVES.

In more detail about our commitment to the environment, call 800-952-4771

The original, and the definitive standard.

RESILIENT WEDGE GATE VALVES

2" THROUGH 12"
MODEL KS-FW



RECOMMENDED SPECIFICATIONS

1. Valves shall conform to the latest revision of AWWA Standard C509 covering resilient seated gate valves for water supply service.
2. The valves shall have an iron body, bonnet, and O-ring plate. The wedge shall be totally encapsulated with rubber.
3. The sealing rubber shall be permanently bonded to the wedge per ASTM D429.
4. Valves shall be supplied with O-ring seals at all pressure retaining joints. No flat gaskets shall be allowed.
5. The valves shall be either non-rising stem or rising stem, opening by turning left or right, and provided with 2" square operating nut or a handwheel with the word "Open" and an arrow to indicate the direction to open.
6. Stems shall be cast copper alloy with integral collars in full compliance with AWWA. All stems shall operate with copper alloy stem nuts independent of wedge and of stem (in NRS valves).
7. All stems shall have two O-rings located above thrust collar and one O-ring below. Stem O-rings shall be replaceable with valve fully opened and subjected to full pressure. The stems on 2" - 12" shall also have a low torque thrust bearing located above and below the stem collar to reduce friction during operation.
8. Waterway shall be smooth, unobstructed and free of all pockets, cavities and depressions in the seat area. Valves 2" and larger shall accept a full size tapping cutter.
9. The body, bonnet and O-ring plate shall be fusion-bonded epoxy coated, both interior and exterior on body and bonnet. Epoxy shall be applied in accordance with AWWA C550 and be NSF 61 Certified.
10. Each valve shall have maker's name, pressure rating, and year in which it was manufactured cast in the body. Prior to shipment from the factory, each valve shall be tested by hydrostatic pressure equal to the requirements of AWWA C509 (and UL/FM where applicable).
11. Valves shall have all component parts cast and assembled in the USA and shall be manufactured by the Kennedy Valve Company.



ISO 9001



www.kennedyvalve.com



1021 East Water Street • PO Box 931 • Elmira, New York 14901
PHONE 607-734-2211 FAX 1-800-952-4771

Kennedy Valve is a Division of AWWA, Inc.



Kennedy Valve is a Division of AWWA, Inc.

www.kennedyvalve.com



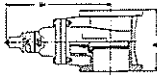
For Generations

AWWA C509 250 PSI • UL/FM Approved 200 PSI • NSF 61 Certified • Full Water Way • Fusion Bond Epoxy Coated • 10 Year Limited Warranty

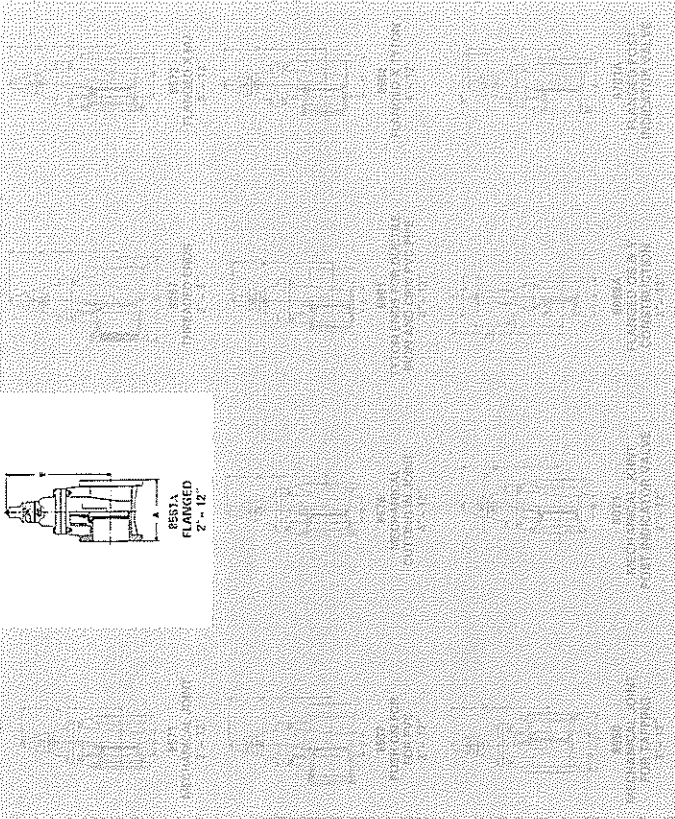
RESILIENT WEDGE VALVE

In 1978, Kennedy recognized the market requirements and existing limitations for a resilient wedge valve. Kennedy's design was the result of a long process.

The Kennedy Resilient Wedge Valve, with its unique features and benefits, was the first to be manufactured with AWWA and ULFM approval for all water treatment applications.



RESILIENT WEDGE VALVE
2" - 12"



NOTE:

It is recommended that valves be installed with stems vertical when used in raw sewage or sludge applications or in water with excessive sediment. Flanged end connections not recommended for buried service.

VALVE SIZE	A	B	C	D	E	G	H	I	J	P	Q	R	S	U	V	RR. OF TURNS TO FULL OPEN
2"	7	3-1/4	-	5-3/8	15-7/8	-	-	3	10	12	7-1/4	-	-	-	-	5-1/2
2-1/2"	7-1/2	-	-	7-1/8	11-3/8	-	-	3-1/4	16-3/8	13-7/8	7-1/4	-	-	-	-	8
3"	8	3-1/2	-	7-1/8	12-3/8	-	5-3/4	3-1/2	18-7/8	15-5/8	10	5-3/4	8-1/4	10	-	10
4"	9	4-1/2	6-3/4	14-3/4	14-3/4	4-5/8	6-3/4	4-1/2	22-3/4	18-1/4	10	6-3/4	9-1/4	13-1/2	-	13-1/2
6"	10-1/2	5-1/2	7-7/8	-	19	5-1/4	8	5	30-1/8	23-3/4	12	8	10-1/2	15-1/2	-	15-1/2
8"	11-1/2	6-1/8	8-1/2	-	25-1/2	5-5/8	9-3/4	5-1/2	31-3/4	29-1/4	14	10-3/4	13-1/4	25-1/2	-	25-1/2
10"	13	10-1/2	10	-	28-1/2	7	11-3/4	7	45-3/4	35-3/8	18	12-1/2	14-7/8	31-1/2	-	31-1/2
12"	14	13-3/4	11-1/4	-	30	8-1/2	12	8-1/2	53-1/8	40-5/8	18	12-1/2	15	37-3/4	-	37-3/4

ENGINEERING FEATURES

THRUST BEARINGS
Delrin thrust bearings above and below the thrust collar reduce friction and minimize operating torques.

COPPER ALLOY STEM
Long, trouble-free life with high strength, non-corrosive copper alloy stem and stem nut.

STAINLESS STEEL HARDWARE
304 stainless steel nuts and bolts provide long-life corrosion protection.

100% COATED WEDGE
100% coated wedge ensures bubble-tight seal every time up to 250 PSI. With twin seal design.

ELLIPTICAL BOLT HOLES
Hole design on MJ connection eliminates the need for anti-rotation balls.

MINIMAL FLOW LOSS
Smooth, unobstructed waterway is free of pockets, cavities and depressions, allowing for minimal flow loss and lower pumping costs. All valves accept full-size tapping cutter.

REPLACEABLE O-RINGS
Two O-ring seals are replaceable with the valve fully open and subjected to full-rated working pressure.

NO FLAT GASKETS
O-ring seals at stuffing box and bonnet to body flanges to ensure the best possible seal. No flat gaskets.

EPOXY COATING
Kennedy corrosion resistant fusion-bonded epoxy coating, conforming to AWWA C550 and NSF 61 Certified, protects both inside and outside of valve.

EASY STORAGE
Pads on the bottom of all valves keep valve in upright position for easier storage and protection from the elements.

VALVE RATING: All valves are rated at 250 PSI for AWWA service and 200 PSI for UL/FM service. All valves are hydrostatically tested to 500 PSI.



**KENNEDY VALVE KS-FW
RESILIENT
WEDGE VALVES**

KENNEDY VALVE

**KENNEDY VALVE AWWA C509 Resilient Wedge Gate Valves
Meet or Exceed the Requirements of
AWWA Standard C509
UL-262/FM-1120/1130
ULC-Underwriters' of Canada**

Size Range	Water Working Pressure psi	Seat Test psi	Hydrostatic Shell Test psi
AWWA 2"-12"	250 Water Works	250 & 400	500
ULFM 2"-12"	200 Fire Protection	250 & 400	500

Available in either non-rising stem or outside screw & yoke.

Available End Connections & Size Range	Figure No.	Figure No. with (STD)	Post Plate
Flg. End (NRS)	2" - 12"	8561ASS	8701ASS(3"-12")
M.J.	2" - 12" (except 2 1/2")	8571SS	8071SS(3"-12")
Flg. & M.J.	3" - 12"	8572SS	8702SS(3"-12")
Push-on for PVC (SDR)	2" - 8"	8597SS	8597PSS(3"-8")
Flg. End (OS & Y)	2" - 12"	8068A	N/A
M.J. for Tapping	4" - 12"	8950SS	8950PSS
Push-on for D.I. & C900 PVC	4" - 12"	8901SS	8901PSS
M.J. Cutting-in	4" - 12"	8576SS	8576PSS
Push-on D.I. X Flg.	4" - 12"	8902SS	8902PSS
Threaded	2" - 3"	8057SS	8057PSS(3"only)
Threaded (OS&Y)	2" - 3"	8067SS	N/A

Accessories

- | | |
|-------------------------------|-----------------|
| Indicator Posts | Handwheels |
| "T" Handles | Extension Stems |
| Stem Guides | Floor Boxes |
| 2" Sq. Operating Nuts | Chain Wheels |
| Floorstands (non-rising stem) | |

NOTE: 2" OS&Y Flanged and Threaded versions are UL Listed



Certified to
NSF/ANSI 61-G
NSF/ANSI 372

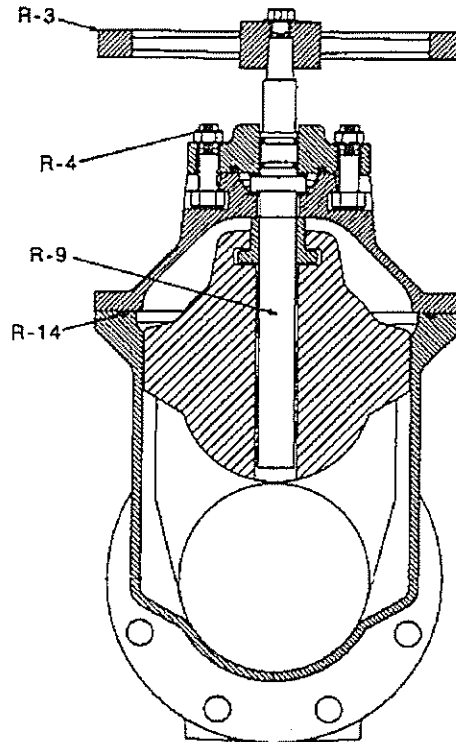
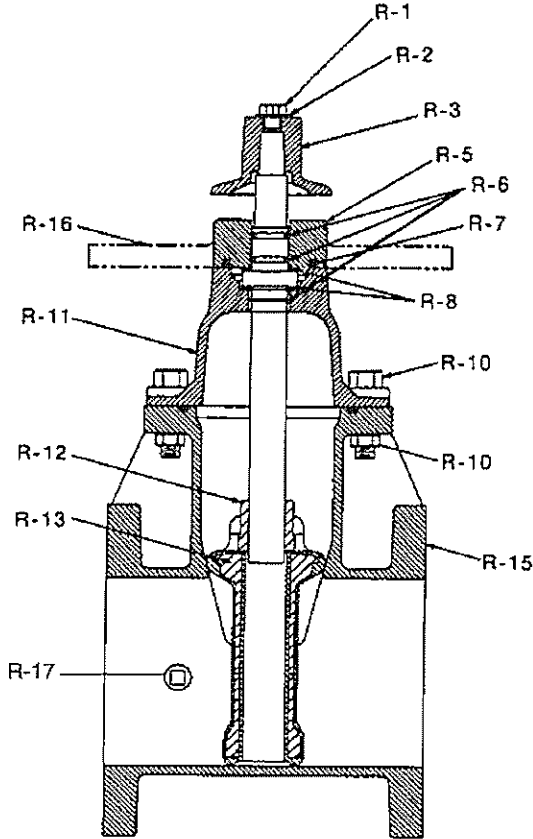
Sizes 2" - 12"



**RESILIENT SEAT GATE VALVE
N.R.S. ASSEMBLY
KS-FW**

KENNEDY VALVE MODEL KS-FW

Complies with applicable requirements of AWWA C509



PIPE PLUG STANDARD ON FLANGE & GROOVE VALVES @ POSITION "A"

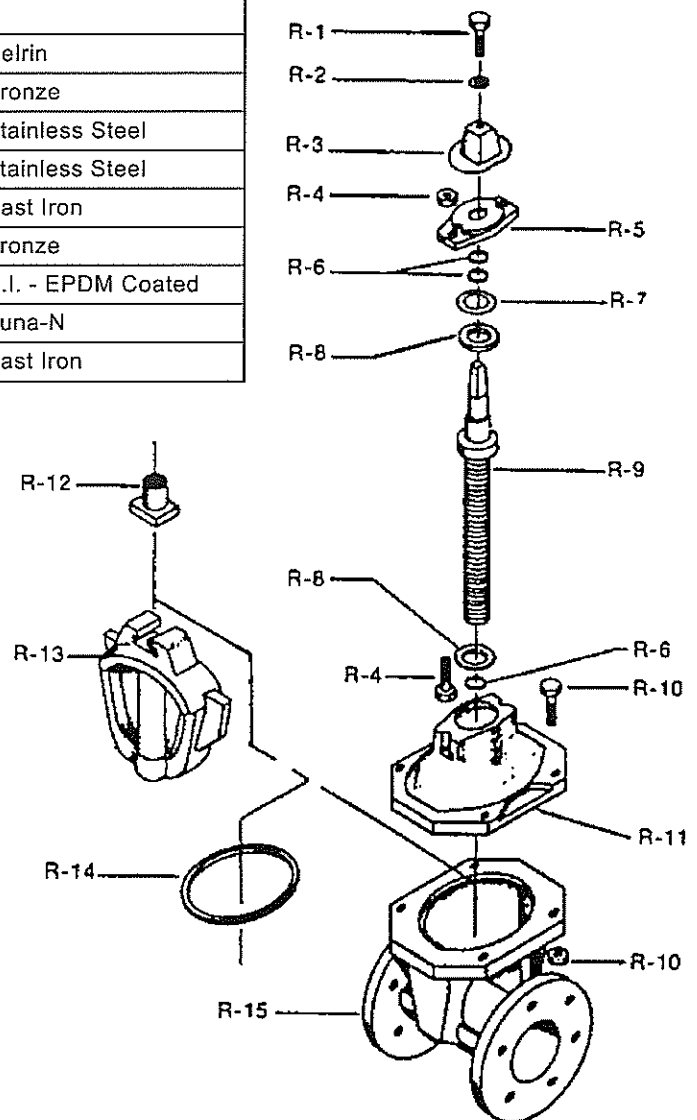
DET.	NAME OF PART	MATERIAL	ASTM SPEC.
R-1	Hex Head Bolt	Stainless Steel	ASTM F593C
R-2	Flat Washer	Zinc Plated Steel	ASTM A307
R-3	Operating Nut	Cast Iron	ASTM A126 Class B
	Handwheel	Cast Iron	ASTM A126 Class B
R-4	Hex Bolt & Nut	Stainless Steel	ASTM F593C/F594
R-5	Stuffing Box	2" thru 8"	Cast Iron ASTM A126 Class B
		10" and 12"	Ductile Iron ASTM A536 Grade 70-50-5
R-6	O-Ring (Stem)	Buna - N	-----
R-7	O-Ring (Stuffing Box)	Buna - N	-----
R-8	Thrust Washer	Delrin	-----
R-9	Stem	Bronze	ASTM B584 C86700
R-10	Hex Head Cover Bolts & Nuts	Stainless Steel	ASTM F593C/F594
R-11	Cover	Cast Iron	ASTM A126 Class B
R-12	Stem Nut	Bronze (NDZ)	ASTM B763 C99500
R-13	Wedge (EPDM Encapsulated)	Ductile Iron	ASTM A536 Grade 70-50-5
R-14	O-Ring (Cover)	Buna - N	-----
R-15	Body (All Types)	Cast Iron	ASTM A126 Class B
R-16	Plate	Cast Iron	ASTM A126 Class B
R-17	Pipe Plug: 1/2"; 2 1/2"-4"--3/4"; 6"-12"	Galvanized Steel	-----

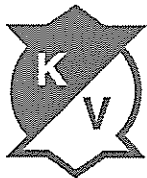


2" - 12" GATE VALVE NRS ASSEMBLY EXPLOSION

KENNEDY VALVE MODEL KS-FW

DET.	QTY.	DESCRIPTION	MATERIALS
R-1	1	Hold Down Hex Bolt	Stainless Steel
R-2	1	Hold Down Bolt Washer	Zinc Plated Steel
R-3	1	Sq. Operating Nut OR Handwheel (Not Shown)	Cast Iron
R-4	2	Bolt & Nut (Stuffing Box)	Stainless Steel
R-5	1	Stuffing Box (10" & 12" D.I.)	Cast Iron
R-6	3	O-Ring (Stem) 1 Below Collar	Buna-N
R-7	1	O-Ring (Stuffing Box)	Buna-N
R-8	1	Thrust Washer (Sizes 2"-2 1/2")	
	2	Thrust Washer (Sizes 3" thru 12")	Delrin
R-9	1	Stem	Bronze
R-10	4	Cover Bolts & Nuts (Sizes 2" thru 6")	Stainless Steel
	8	Cover Bolts & Nuts (Sizes 8" thru 12")	Stainless Steel
R-11	1	Cover	Cast Iron
R-12	1	Stem Nut	Bronze
R-13	1	Wedge Disc	D.I. - EPDM Coated
R-14	1	O-Ring (Cover)	Buna-N
R-15	1	Body	Cast Iron





Kennedy Valve

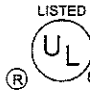


A DIVISION OF McWANE, INC.

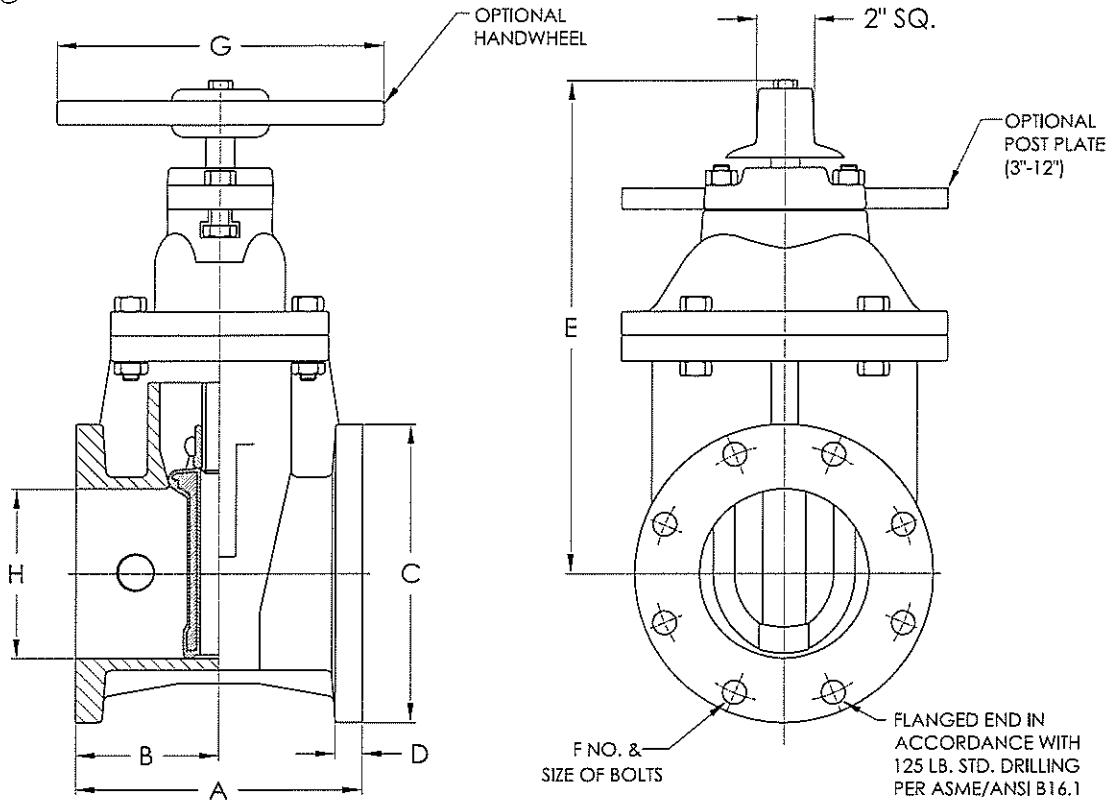
www.kennedyvalve.com

1021 E. Water Street • Elmira, New York 14901

P.O. Box 981

PHONE: (607) 734-2211 • FAX: 1-800-952-4771

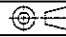

LISTED
 888H
 APPROVED

 A.W.W.A Standard C509



VALVE SIZE	A	B	C	D	E	F	G	H	TURNS TO OPEN	WEIGHT
**2	7	3 1/2	6	5/8	10 7/8	4-5/8	7 1/4	2	7 3/4	41
**2 1/2	7 1/2	3 3/4	7	11/16	11 3/8	4-5/8	7 1/4	2 1/2	8	51
3	8	4	7 1/2	3/4	12 3/8	4-5/8	10	3	10	62
4	9	4 1/2	9	15/16	14 3/4	8-5/8	10	4 1/4	13 1/2	87
6	10 1/2	5 1/4	11	1	19	8-3/4	12	6 1/4	19 1/2	134
8	11 1/2	5 3/4	13 1/2	1 1/8	22 1/2	8 3/4	14	8 1/4	25 1/2	205
10	13	6 1/2	16	1 3/16	26 1/2	12-7/8	18	10 1/4	31 1/2	331
12	14	7	19	1 1/4	30	12-7/8	18	12 1/4	37 3/4	515

*WEIGHT W/HANDWHEEL-ADD 1# FOR (2" - 2 1/2"), 6.5# FOR (3"-4"), 7# FOR (6"), 10# FOR (8"), 16# FOR (10" & 12")
 *WEIGHT W/INDICATOR POST PLATE ADD 16# FOR (3"-12"), NOT AVAILABLE FOR (2"-2 1/2")
 *2" and 2 1/2" not included in AWWA C509

REPLACES F-6102-CI-2~12-GD
 REPLACES F-6102-DI-2~12-GD

UNLESS OTHERWISE SPECIFIED:			NAME	DATE	 KENNEDY VALVE Division of McWane, Inc. 1021 EAST WATER STREET ELMIRA, NEW YORK 14901	
CASTING DIM: 0" - 4" +/- 1/32" 4" - 8" +/- 3/64" 8" - 12" +/- 1/16" 12" - 18" +/- 3/32" 18" - UP +/- 1/8" RADII 1/8" DRAFT 2°		DRAWN	N.HOLT	7/25/14		
		CHECKED	-	-		
		APPROVED	-	-		
MACHINING DIM: DUAL DIM. INCHES(MM) FRACTIONAL ± 1/64 ANGULAR ± .5 RADII ± 1/32" TWO PLACE DECIMAL ± .02 THREE PLACE DECIMAL ± .005		MATERIAL:		TITLE: 2-12 INCH RESILIENT WEDGE GATE VALVE - C509 NRS - FLxFL GENERAL DIMENSIONS		
FINISH: 125 RMS		Weight: LBS	SIZE	PART NO.	DWG. NO.	REV
			A		CAT910080A	
<small>PROPRIETARY AND CONFIDENTIAL THE INFORMATION CONTAINED IS THE SOLE PROPERTY OF KENNEDY VALVE CO. ANY REPRODUCTION BY PART OR AS A WHOLE WITHOUT THE WRITTEN PERMISSION OF KENNEDY VALVE CO. IS PROHIBITED. DESIGN & INVENTION RIGHTS RESERVED.</small>						
					SHEET 1 OF 1	



2831 East Industrial Pk. Dr.
Brazil, IN 47834
Phone (812) 442-5080
FAX (812) 442-1550

1825 E. National Ave.
Brazil, IN 47834
Phone (812) 442-5080
FAX (812) 442-1550

1855 E. Industrial Drive
Grand Haven, MI 49417
Phone (616) 846-4400
FAX (616) 846-4209

550-560 Centennial Blvd.
Casa Grande, AZ 85122
(520) 421-9440
FAX (520) 421-7255

875 Progress Ave.
Lawrenceville, GA 30043
(770) 963-1200
FAX (770) 963-2183

Technical Data Sheet

PRODUCT DESCRIPTION: Epoxy

ISSUE DATE: 02/10/2016

PRODUCT NUMBER: B13369ER80K

LAB NUMBER: B-3675-13

PHYSICAL ATTRIBUTES

PRODUCT: RED OXIDE EPOXY

IMPACT RESISTANCE DIRECT: 160IN/LBS @ 2.5-3.5 MILS(ASTM D2794)

IMPACT RESISTANCE INDIRECT: 160IN/LBS @ 2.5-3.5 MILS(ASTM D2794)

CROSS-HATCH ADHESION: 5B (ASTM D3359)

CONICAL MANDREL: LAB=1/8" (ASTM D522)

PENCIL HARDNESS: LAB=2H (ASTM D3363)

SPECIFIC GRAVITY: 1.41 +/- 0.05 G/ML

THEORETICAL COVERAGE: 136.57 FT²/LB @ 1 MIL

60°GLOSS: 88%+ (ASTM D523)

APPLICATION & CURE METHODS

APPLICATION METHODS: ELECTROSTATIC SPRAY 50-100 KV

RECOMMENDED CURE TEMP: 10MIN.@375F PMT

SUBSTRATE: CRS WITH ZINC OR IRON PHOSPHATE PRETREAT

RECOMMENDED FILM BUILD: 3.0-14.0 MILS

Remarks:

1. This powder is to be stored below 80°F/26.7°C and 50% R.H. If it is stored at temperatures below the application room temperature, allow the product to come to room temperature before opening.
2. **POWDER MUST BE PROPERLY CURED ON CLEAN, DRY, PROPERLY PRETREATED SUBSTRATE(S).**
3. The information contained in this bulletin, we believe, is correct to the best of our knowledge and tests. The recommendations and suggestions herein are made without guarantee or representation as to results. We recommend that adequate tests be made in your laboratory or plant to determine if this product meets all of your requirements.
4. **IMPORTANT:** Our only obligations shall be to replace or pay for any material proved to be defective. Beyond the purchase price of materials supplied by us we assume no liability for damages of any kind and the user accepts the product "as is" and without warranties, expressed or implied. The suitability of the product for all intended use shall be solely up to the user.

DATE PRINTED: 02/10/2016