

SPECIFICATIONS

1. Bilco heavy duty forged stainless steel hinges with stainless steel pins
2. 1-1/2" drain coupling
3. Standard slam lock
4. Bilco automatic hold open arm
5. 1/4" aluminum diamond pattern plate cover
6. Bilco 1/4" aluminum channel frame with recessed anchors
7. Stainless steel lock strike
8. Stainless steel spring lifting mechanism

SHOP FINISH:
 ALUMINUM: MILL FINISH
 TYPE 316 STAINLESS STEEL
 HARDWARE: (unless otherwise specified)

REINFORCED FOR 300 Lbs. PER Sq. Ft.
 (1464 kg. PER Sq. METER) LIVE LOAD

INSTALLER NOTES:

- A. Use caution. Cover is spring loaded. Do not remove safety shipping bolt until unit is to be installed and in normal horizontal operating position.
- B. Be sure unit is set on slight pitch toward drain corner.
- C. Before anchoring in place open and close door. Check to see that the door in the closed position rests on the frame all around. If not, shim under the frame at the proper corner.
- D. Do not reduce 1 1/2" drain pipe to dry well or disposal system.
- E. Bend down anchors if required

Customer:

P.O. #:

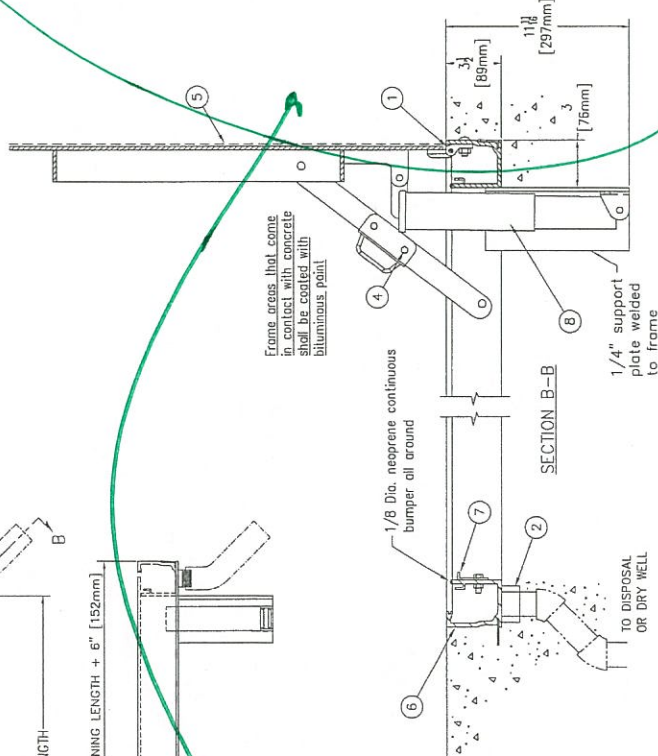
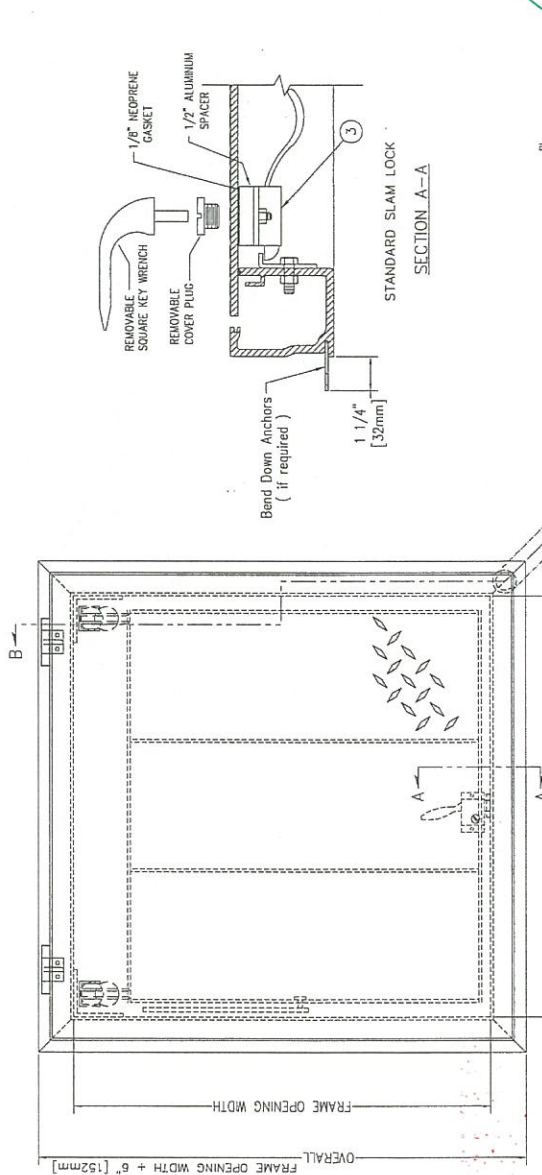
Job:

Sales Rep:

Manufacturers of Doors for Special Services
Bilco
 THE BILCO COMPANY
 New Haven, Connecticut, 06505

SINGLE LEAF ACCESS DOOR
 TYPE J-AL - INTERIOR/EXTERIOR

QTY	TYPE	WIDTH x LENGTH
	J-1AL	2'-0" X 2'-0" [610mm] x [610mm]
	J-2AL	2'-6" X 2'-6" [762mm] x [762mm]
	J-3AL	3'-0" X 2'-6" [914mm] x [762mm]
	J-4AL	3'-0" X 3'-0" [914mm] x [914mm]
	J-5AL	3'-6" X 3'-6" [1065mm] x [1065mm]



MKEC ENGINEERING, INC.
 411 N. WEBB ROAD • WICHITA, KS 67206

Reviewed
 ~~Reviewed~~ and Resubmit
 Rejected
 Not Required by the Contract Documents
 Reviewed for conformance with the design concept of the Project and compliance with the information given in the Contract Documents. Contractor is responsible for dimensions to be confirmed and correlated to the job site; for information that pertains solely to the fabrication process or to techniques of construction; and for coordination of the work of all trades.
 BY SALE
 DATE 6/27/16
 THIS DRAWING IS THE PROPERTY OF THE BILCO COMPANY. IT IS TO BE USED ONLY FOR THE PROJECT AND SITE SPECIFICALLY IDENTIFIED HEREIN. NO REPRODUCTION OR PUBLICATION AND/OR PUBLIC DISTRIBUTION IN WHOLE OR IN PART IS EXPRESSLY PROHIBITED WITHOUT THE PRIOR WRITTEN PERMISSION OF BILCO COMPANY. THE INFORMATION CONTAINED HEREIN REMAINS THE PROPERTY OF THE BILCO COMPANY. ALL RIGHTS RESERVED.

Fill out info for this project