

**SPECIFICATIONS**

1. Bilco heavy duty forged stainless steel hinges with stainless steel pins
2. 1-1/2" drain coupling
3. Standard slam lock
4. Bilco automatic hold open arm
5. 1/4" aluminum diamond pattern plate cover
6. Bilco 1/4" aluminum channel frame with recessed anchors
7. Stainless steel lock strike
8. Stainless steel spring lifting mechanism

SHOP FINISH:  
 ALUMINUM: MILL FINISH  
 HARDWARE: TYPE 316 STAINLESS STEEL  
 (unless otherwise specified)

REINFORCED FOR 300 LBS. PER SQ. FT.  
 (1464 KG. PER SQ. METER) LIVE LOAD

**INSTALLER NOTES:**

- A. Use caution. Cover is spring loaded. Do not remove safety shipping bolt until unit is to be installed and in normal horizontal operating position.
- B. Be sure unit is set on slight pitch toward drain corner.
- C. Before anchoring in place open and close door. Check to see that the door in the closed position rests on the frame all around. If not, shim under the frame at the proper corner.
- D. Do not reduce 1 1/2" drain pipe to dry well or disposal system.
- E. Bend down anchors if required

Customer: Wildcat Construction Co., Inc.

P.O. #: Wildcat PO 4549

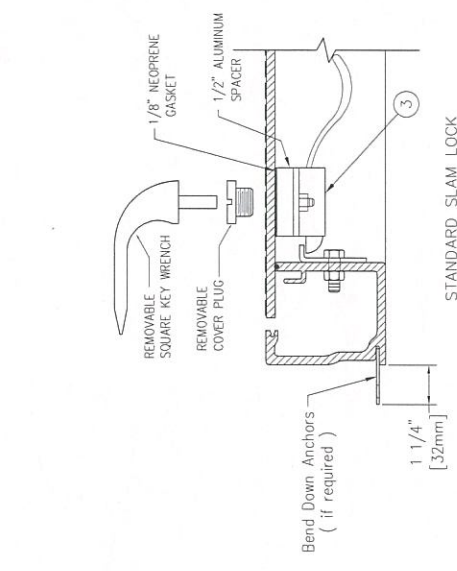
Job: Wildcat Job 7127

Sales Rep: Ray Newcomer  
 Commercial Mfg Representatives

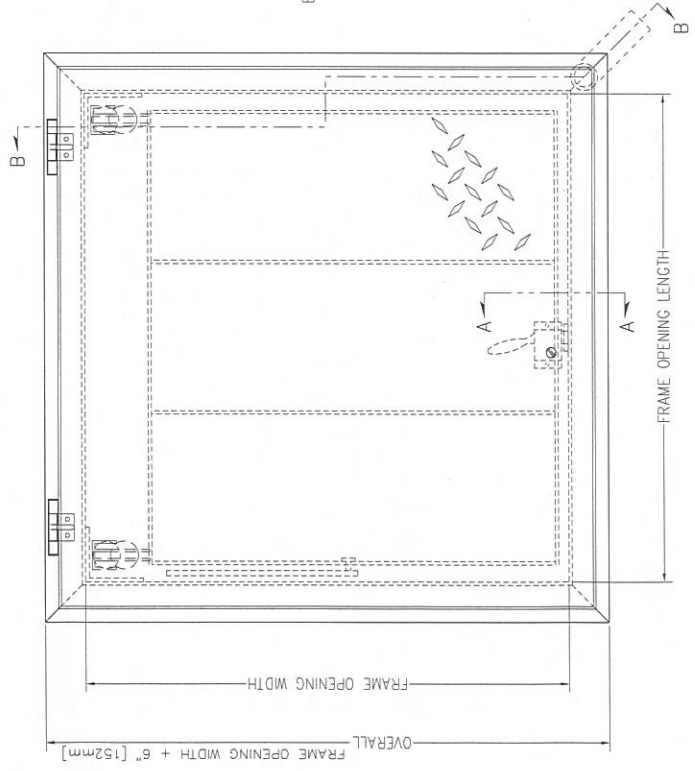
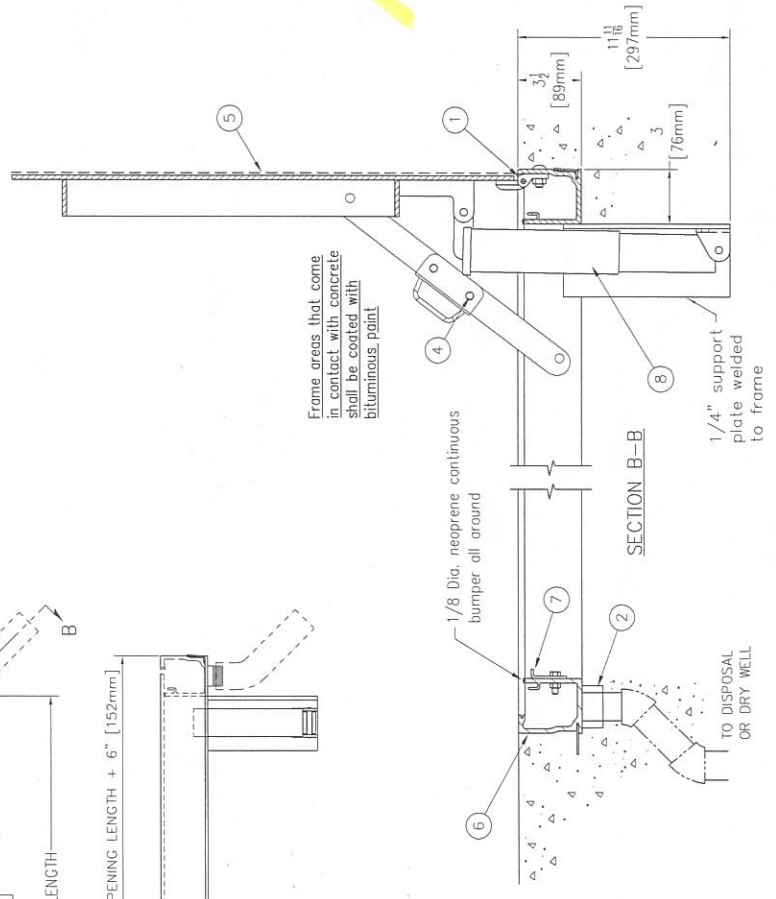


**SINGLE LEAF ACCESS DOOR**

QTY	TYPE	WIDTH x LENGTH
<input type="checkbox"/>	J-1AL	2'-0" x 2'-0" [610mm] x [610mm]
<input type="checkbox"/>	J-2AL	2'-6" x 2'-6" [762mm] x [762mm]
<input type="checkbox"/>	J-3AL	3'-0" x 2'-6" [914mm] x [762mm]
<input checked="" type="checkbox"/>	J-4AL	3'-0" x 3'-0" [914mm] x [914mm]
<input type="checkbox"/>	J-5AL	3'-6" x 3'-6" [1065mm] x [1065mm]



SECTION A-A  
 STANDARD SLAM LOCK



**MKEC ENGINEERING, INC.**  
 411 N. WEBB ROAD • WICHITA, KS 67206

Reviewed  
 Revisited as Noted  
 Not Required by the Contract Documents

Revise and Resubmit  
 Rejected

Reviewed for conformance with the design concept of the Project and compliance with the information given in the Contract Documents. Contractor is responsible for dimensions to be confirmed and correlated at the job site; for information that pertains solely to the fabrication process or to techniques of construction; and for coordination of the work of all trades.

BY: **SAK** DATE: **07/10/16**

THIS DRAWING IS THE PROPERTY OF THE BILCO COMPANY AND INCORPORATES INFORMATION WHICH IS PROPRIETARY. IT IS TO BE KEPT IN CONFIDENTIALITY AND NOT REPRODUCED OR PUBLISHED IN ANY MANNER WITHOUT THE WRITTEN CONSENT OF THE BILCO COMPANY. THE INFORMATION CONTAINED HEREIN REMAINS THE PROPERTY OF THE BILCO COMPANY. ALL RIGHTS RESERVED.