



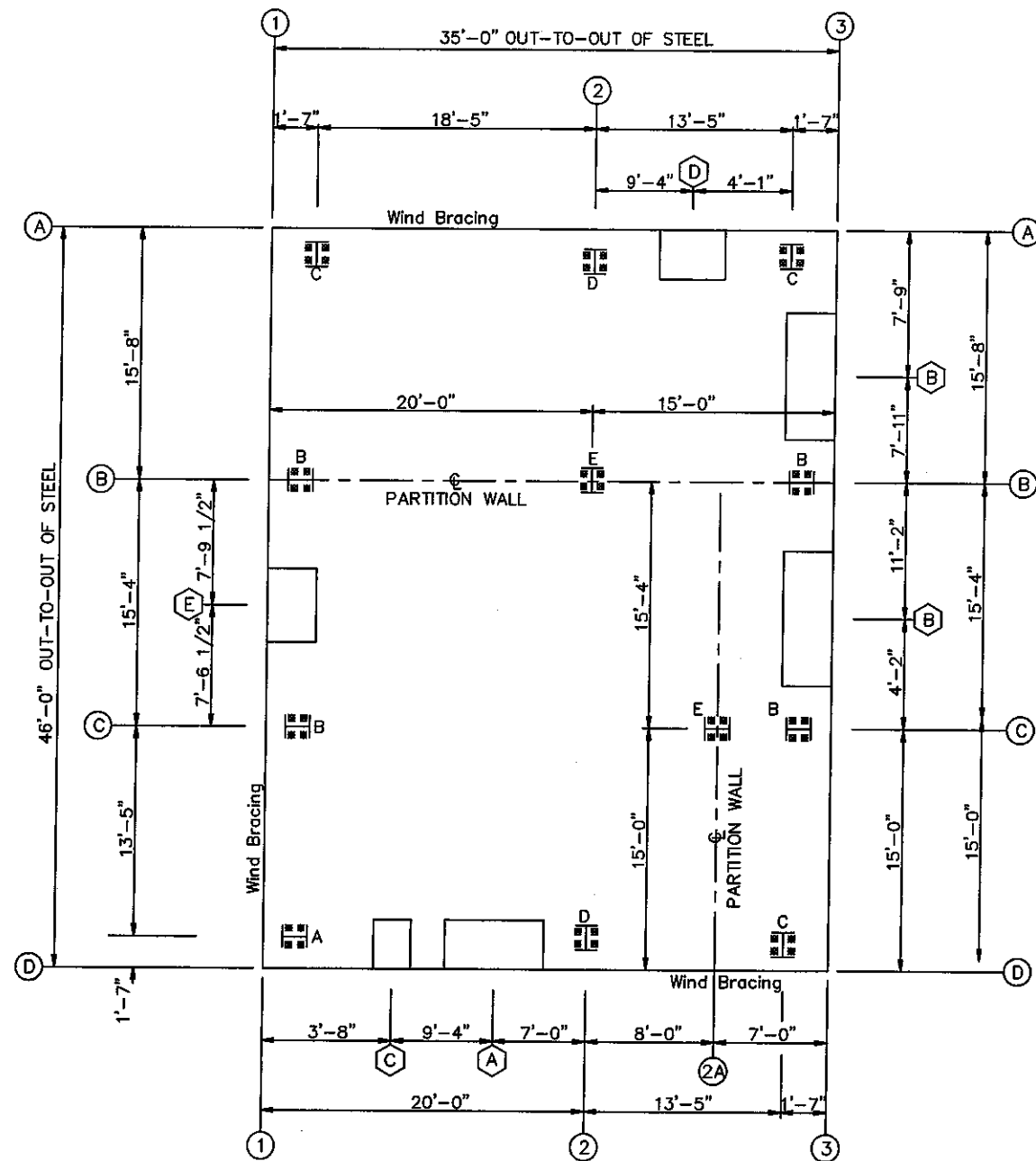
**GENERAL NOTES**

1. THIS PLAN IS FOR THE LAYOUT AND SETTING OF ANCHOR BOLTS ONLY. THE FOUNDATION DESIGN PROFESSIONAL SHOULD REVIEW AND INCORPORATE THIS PLAN INTO THE FOUNDATION DESIGN AND DETAILS.
2. THE FOUNDATION MUST BE DESIGNED TO RESIST THE REACTIONS SHOWN ON THE REACTION SHEET.
3. BRACING REACTIONS MUST BE COMBINED WITH LONGITUDINAL WIND (LONG WIND) FROM THE ELEMENTARY FRAME REACTIONS TO ACHIEVE MAXIMUM SHEAR AND UPLIFT.
4. ALL DIMENSIONS ARE BUILDING STEEL DIMENSIONS. REQUIREMENTS FOR SETTING NOTCHES, BRICK LEDGES, CHAMFERS, ETC. MUST BE ACCOUNTED FOR BY OTHERS.
5. ITEMS IN THE FOUNDATION (I.E. ANCHOR BOLTS, HAIRPINS, SHEAR ANGLES, ETC.) ARE TO BE FURNISHED BY CONCRETE CONTRACTOR UNLESS NOTED.
6. DIMENSION GOVERN. DRAWINGS ARE NOT TO SCALE.
7. ANCHOR BOLT SIZES ARE BASED ON A MATERIAL YIELD STRENGTH  $F_y = 36$  KSI.

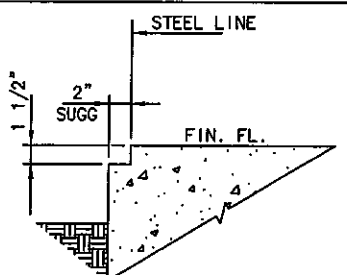
**GENERAL NOTES:**

FOR THE BUILDING(S) SUPPLIED BY THIS METAL BUILDING MANUFACTURER TO BOLT UP AND FIT PROPERLY ON THE CONCRETE, THE ANCHOR BOLTS MUST BE LOCATED BASED UPON THESE ANCHOR BOLT DRAWINGS.  
 ANY DEVIATION FROM THE SETTINGS ON THESE DRAWINGS WILL CREATE AN OPPORTUNITY FOR THE MATERIALS SUPPLIED TO NOT FIT PROPERLY. THIS METAL BUILDING MANUFACTURER WILL NOT BE RESPONSIBLE FOR COSTS ASSOCIATED WITH REQUIRED MODIFICATIONS TO THE STEEL FROM IMPROPERLY LOCATED ANCHOR BOLTS.

QTY.	MARK	DIA.	THREAD
40	AB1	1/2"	3"
48	AB3	3/4"	3"
40	1/2" DIA. NUTS		
48	3/4" DIA. NUTS		

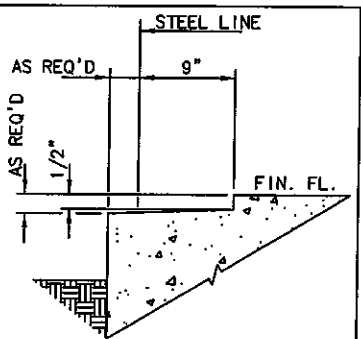


**ANCHOR BOLT PLAN**  
 NOTE: All Base Plates @ 100'-0" (U.N.)  
 --- Partition Wall (See KeyDwg)

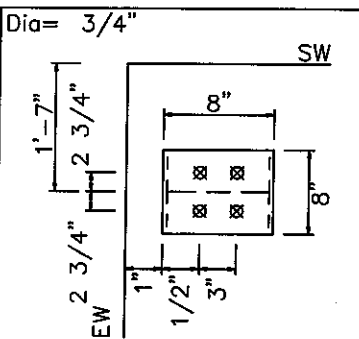


**SUGGESTED NOTCH DETAIL**  
 (RECOMMENDED FOR USE ON ALL BLDGS WITHOUT BASE ANGLE TRIM)

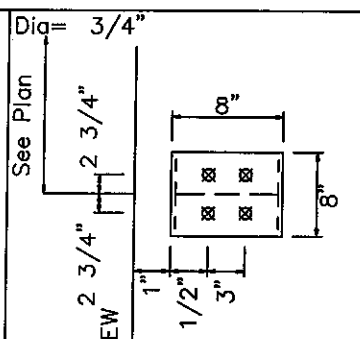
AS REQ'D	1 1/4"	1 1/4"	2-AB1'S W/ 1 1/2" PROJ TYP.		
(A)	12-0 x 10-0	6-1 1/4	6-1 1/4	1 (ONE)	REQ'D
(B)	6-4 x 7-2	3-3 1/4	3-3 1/4	2 (TWO)	REQ'D
(C)	3-4 x 7-2	1-8 1/4	1-8 1/4	5 (FIVE)	REQ'D
(D)	5-4 x 5-4	2-9 1/4	2-9 1/4	1 (ONE)	REQ'D
(E)	4-7 x 4-0	2-4 3/4	2-4 3/4	1 (ONE)	REQ'D



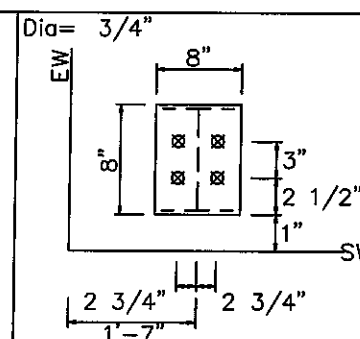
SECTION THRU OVERHEAD DOOR



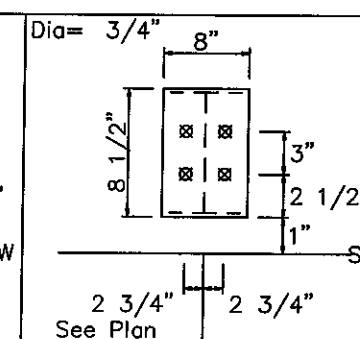
DETAIL A



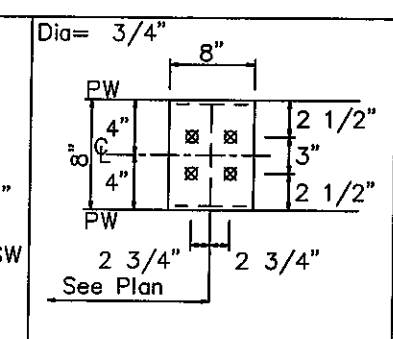
DETAIL B



DETAIL C



DETAIL D



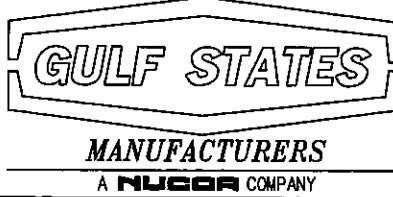
DETAIL E

DATE	APPROVED	DATE	APPROVED
6/29/16			

DBC 1330 E. 37th Street N  
 Wichita, KS 67218  
 City of Wichita Kansas  
 2305 E. 57th Street South  
 Wichita, KS 67216

	MANUFACTURERS OF METAL BUILDINGS
101 AIRPORT RD. STARKVILLE, MS 38759	FILE
JOB NO. 16J0164A	REVISION NO.
PAGE B1 OF 2	REF: 46-0 x 35-0 x 14-0 EH ROOF SLOPE 2:12





PROJECT NUMBER: 16J0164A
PROJECT NAME: City of Wichita Kansas
PROJECT LOCATION: Wichita, KS 67216 COUNTY: Sedgwick
CUSTOMER: DBC

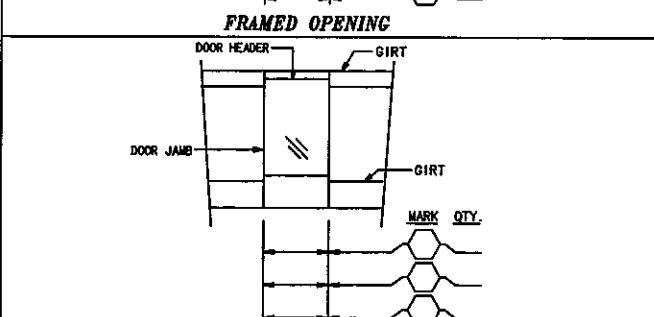
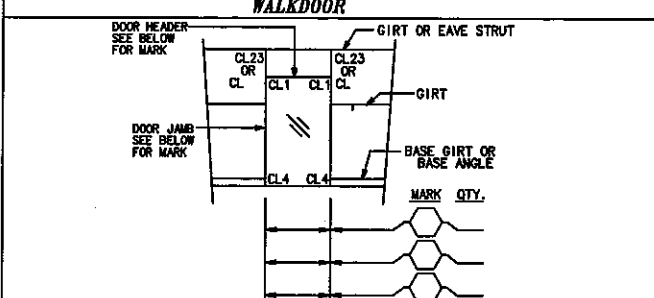
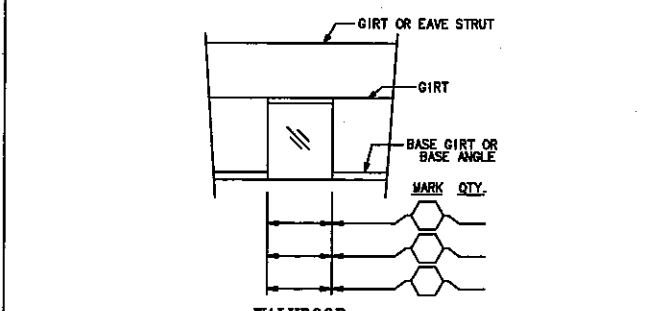
ACCESSORY SCHEDULE

Table with columns: MARK, QTY., DESCRIPTION, FACTORY LOCATED. Lists various framed openings and flashing items.

BUILDING NOTES:

- 1. METAL BUILDING MANUFACTURERS PROVIDES THE NECESSARY MATERIALS FOR A SAFE AND STABLE STRUCTURE...
2. DO NOT STAND OR WALK ON SECONDARY FRAMING MEMBERS...
3. DO NOT USE METAL BUILDING PANELS AS WALK BOARDS...
4. METAL BUILDING PANELS HAVE A PROTECTIVE COATING...
5. METAL BUILDING WALL LIGHTS ARE DESIGNED AND INTENDED FOR WALL USE ONLY...
6. METAL BUILDING ROOF LIGHTS ARE NOT DESIGNED FOR FOOT TRAFFIC...
7. SNUG-TIGHTENED JOINTS: ALL BOLT HOLES SHALL BE ALIGNED TO PERMIT INSERTION OF THE BOLTS WITHOUT UNDOE DAMAGE TO THE THREADS...

FIELD LOCATED ACCESSORY DETAILS



SPECIAL PURPOSE FRAMED OPENING

GLOSSARY OF ABBREVIATIONS table listing terms like AFF, BFF, BLDG, etc. and their meanings.

SCREW SCHEDULE

Table with columns: MARK, SIZE, COLOR, LOCATION. Lists various screw types and their applications.

SHUR-LOK & ROOF-LOK SCREWS

Table with columns: MARK, SIZE, COLOR, LOCATION. Lists Shur-Lok and Roof-Lok screw specifications.

COLORS

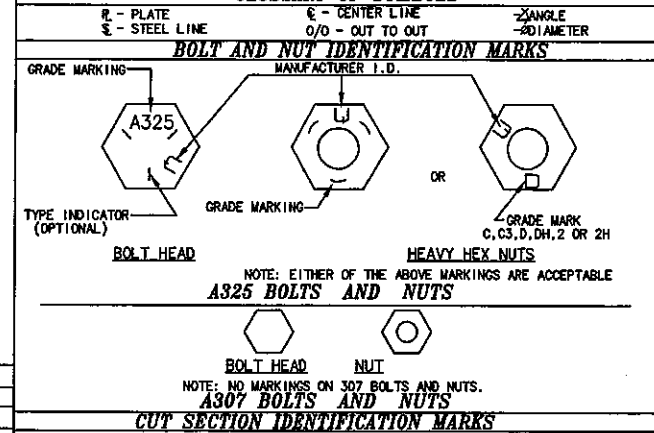
NOTE: IN ORDER TO PROPERLY SCHEDULE THE FABRICATION AND DELIVERY OF YOUR PROJECT, COLOR SELECTION FOR PAINTED MATERIALS (ALL PANELS AND ASSOCIATED TRIM) SHOULD ACCOMPANY YOUR RETURNED SUBMITTALS...

- PRIMARY STEEL FRAMING: GALVALUME
SECONDARY STEEL FRAMING: GALVALUME
ROOF SHEETING: COLOR NEEDED
CANOPY ROOF SHEETING:
WALL SHEETING: COLOR NEEDED
PARTITION PANEL: COLOR NEEDED
WALL LINER PANEL: COLOR NEEDED
ROOF LINER PANEL: COLOR NEEDED
SOFFIT PANEL:
SOFFIT TRIM:
GUTTER: COLOR NEEDED
DOWNSPOUTS: COLOR NEEDED
ENDWALL FLASHING: COLOR NEEDED
LOW SIDEWALL FLASHING: COLOR NEEDED
HIGH SIDEWALL FLASHING:
EAVE BOX TRIM:
ACCESSORY TRIM: COLOR NEEDED
CHANNEL FLASHING:
BASE ANGLE TRIM:
BASE TRIM: COLOR NEEDED
MASONRY SIDEWALL FLASHING:
CORNER TRIM FLASHING: COLOR NEEDED

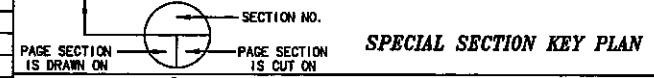
GENERAL NOTES:

- 1. STANDARD DETAILS ARE IN ALPHABETICAL ORDER WHICH HAS NO INFLUENCE ON THE ORDER OF ERECTION...
2. THE BUILDING MUST BE ERECTED ACCORDING TO THE FRAMING PLANS, STANDARD DETAILS, SPECIAL DETAILS...
3. FIELD MODIFICATION OF THE BUILDINGS OR BUILDING COMPONENTS WHICH WILL AFFECT THE STRUCTURAL INTEGRITY...
4. ALL BUILDING COMPONENTS MUST BE PROTECTED TO MINIMIZE WEATHER DAMAGE UNTIL ERECTED...
5. DUE TO THE UNIVERSAL DESIGN AND USE OF METAL BUILDING COMPONENTS, SOME OF THE HOLES WILL NOT BE USED IN EVERY APPLICATION...
6. MOST OF THE ACCESSORIES FURNISHED WITH METAL BUILDING BUILDINGS ARE FRAGILE TO SOME EXTENT...
7. THE BUILDING SHOULD BE ERECTED IN ACCORDANCE WITH OSHA, MSHA AND OTHER APPLICABLE STANDARDS...
8. THE COMMON INDUSTRY PRACTICES OF THE METAL BUILDING SYSTEMS MANUAL ARE INCORPORATED BY REFERENCE...
9. THE METAL TAG INDICATES LOW SIDE OF THE MEMBER AND THE WEEP HOLES INDICATE THE HIGH SIDE OF THE MEMBER.

GLOSSARY OF SYMBOLS



CUT SECTION IDENTIFICATION MARKS



BASIC MATERIAL SPECIFICATIONS

PRIMARY FRAMING STEEL: STEEL FOR MILL-ROLLED STRUCTURAL SECTIONS SHALL CONFORM TO THE REQUIREMENTS OF ASTM A 36, ASTM A 572 GRADE 50 OR 55, OR ASTM A 992...
SECONDARY FRAMING STEEL: STEEL USED TO FORM PURLINS, GIRTS, EAVE STRUTS AND 'C' SECTIONS SHALL CONFORM TO ASTM A1011 SS, GRADE 55, OR HSLAS GRADE 55, CLASS 1...
ROOF AND WALL PANEL MATERIAL: EXTERIOR PANELS SHALL CONFORM TO ONE OF THE FOLLOWING: PANEL MATERIAL SHALL BE ALUMINUM-ZINC ALLOY-COATED STEEL CONFORMING TO THE REQUIREMENTS OF ASTM A 792 SS, GRADE 80...

BUILDING INFORMATION

- ROOF PANEL TYPE: HIGH RIB, R PANEL, SHUR-LOK MECH. SEAM, ROOF-LOK, ROOF-LOK PLUS.
ROOF PANEL CLIP TYPE: N/A, HIGH CLIP, LOW CLIP, FIXED CLIP, UTILITY CLIP.
EAVE REQUIREMENTS: GUTTER W/SIDEWALL FLSH (STD), GUTTER W/SIDEWALL FLSH (DROPPED), SIDEWALL FLASHING ONLY, EAVE BOX FLASHING (STANDARD), EAVE BOX FLASHING (DROPPED), MASONRY SIDEWALL FLASHING, NONE.
INSULATION REQUIREMENTS - ROOF: 6" THK. WALL: 6" THK.
THERMAL BLOCKS - INSULATION THICKNESS: BY METAL BUILDING MANUFACTURERS, BY OTHERS.

WINDBRACING IDENTIFICATION MARKS

- W10\_K 1/4" DIA. WINDBRACING CABLES w/ 1/2" DIA. EYEBOLT and TFC BRACER WASHER (FAS 127)
W20\_K 5/16" DIA. WINDBRACING CABLES w/ 5/8" DIA. EYEBOLT and TFC BRACER WASHER (FAS 127)
W30\_K 7/16" DIA. WINDBRACING CABLES w/ 3/4" DIA. EYEBOLT and TFC BRACER WASHER (FAS 128)
WRR10\_K 1/2" DIA. WINDBRACING RODS with TFC BRACER WASHER (FAS 127)
WRR20\_K 5/8" DIA. WINDBRACING RODS with TFC BRACER WASHER (FAS 127)
WRR30\_K 3/4" DIA. WINDBRACING RODS with TFC BRACER WASHER (FAS 128)
WRR40\_K 7/8" DIA. WINDBRACING RODS with TFC BRACER WASHER (FAS 128)
WRR50\_K 1" DIA. WINDBRACING RODS with TFC BRACER WASHER (FAS 128)
WRR60\_K 1 1/8" DIA. WINDBRACING RODS with TFC BRACER WASHER (FAS 129)
WRR70\_K 1 1/4" DIA. WINDBRACING RODS with TFC BRACER WASHER (FAS 129)

STRUCTURAL PRIMER NOTES:

1. SNUG COAT PRIMER IS INTENDED TO PROTECT THE STEEL FRAMING DURING TRANSPORTATION TO THE JOB SITE AND FOR NOT MORE THAN 45 DAYS FROM THE APPLICATION. STORAGE IN EXTREMELY COLD TEMPERATURES OR WINTER SNOW CONDITIONS, INCLUDING TRANSPORTATION ON SALTED OR CHEMICALLY TREATED ROADS WILL ADVERSELY AFFECT THE DURABILITY AND LONGEVITY OF THE PRIMER...

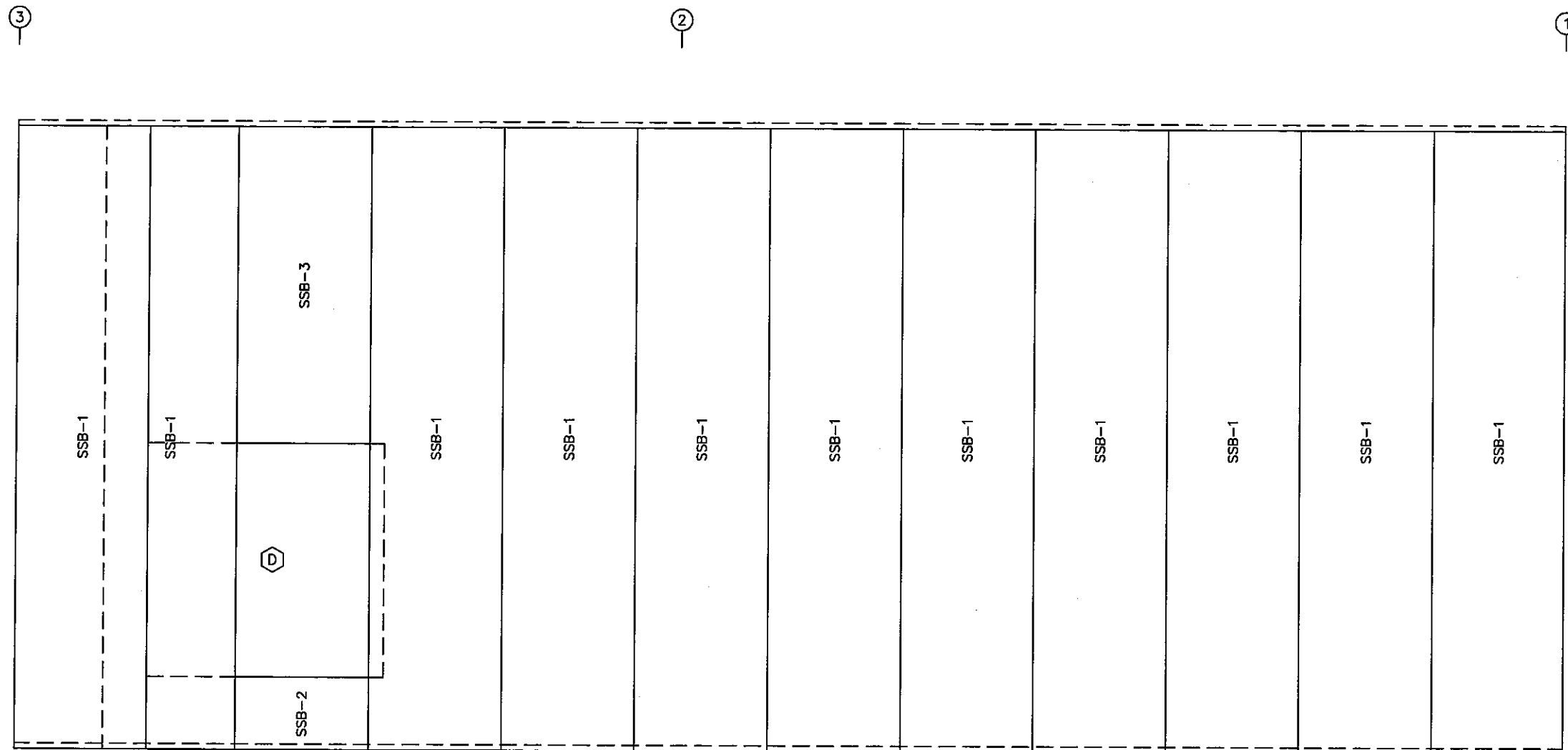
Vertical sidebar containing project information: DATE 8/27/16, APPROVED, DATE, P.E., CHK, ENGR, DWG, DATE, ISSUE, DBC, 1330 E 37th Street N, Wichita, KS 67218, City of Wichita Kansas, 2305 E 57th Street South, Wichita, KS 67216, JOB NO. 16J0164A, REVISION NO., PAGE 81 OF 14.







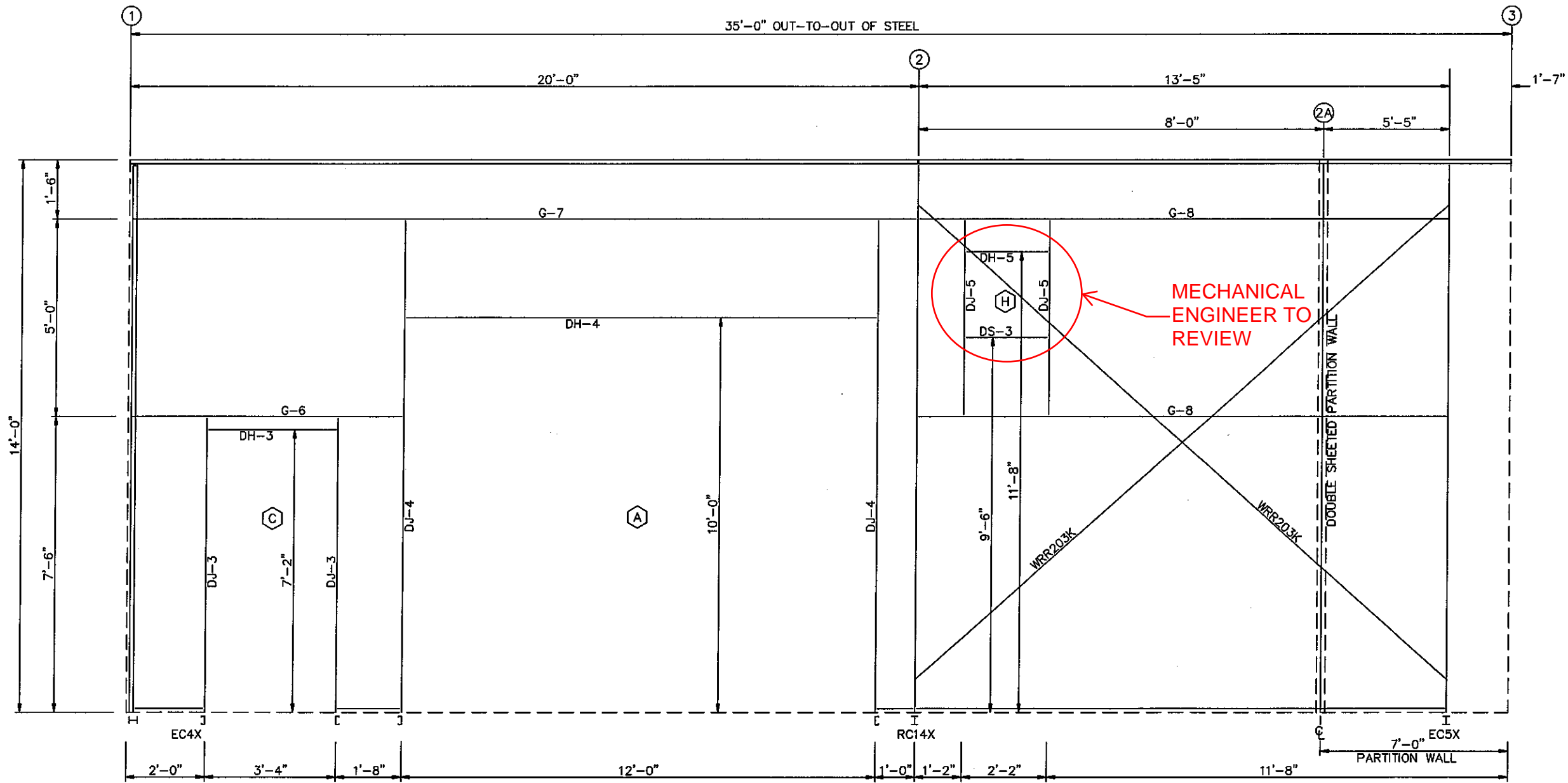
PANEL TABLE		
FRAME LINE A		
QTY	MARK	LENGTH
11	SSB-1	14'-0"
1	SSB-2	3'-0"
1	SSB-3	7'-1 1/2"



SIDEWALL SHEETING & TRIM: FRAME LINE A  
 PANELS: 24 Ga. R-PANEL - COLOR NEEDED

 GULF STATES MANUFACTURING COMPANY 101 AIRPORT RD. SHREVEPORT, LA 70578	DBC 1300 E. 37th Street N Wichita, KS 67218 City of Wichita Kansas 2305 E. 57th Street South Wichita, KS 67216	ISSUE FRAMING APPROVAL DRAWINGS	DWG CHK ENR P.E. DATE 6/29/16	APPROVED DATE
JOB NO. 16J0164A	REVISION NO.	PAGE E5 OF 14	RF 46-0 x 35-0 x 14-0 EH ROOF SLOPE 2:12	

MEMBER TABLE		
FRAME LINE D		
MARK	PART	LENGTH
DJ-3	8X25C14	
DJ-4	8X25C14	
DJ-5	8X25C14	
DH-3	8x25C16	
DH-4	8x25C16	
DH-5	8x25C16	
DS-3	8x25C16	
G-6	8X25z16	
G-7	8X25z15	
G-8	8X25z16	
WRR203K	WRR20_K	18'-8"



SIDEWALL FRAMING: FRAME LINE D

DATE	APPROVED	DATE	ISSUE
8/25/16			

DATE	ISSUE

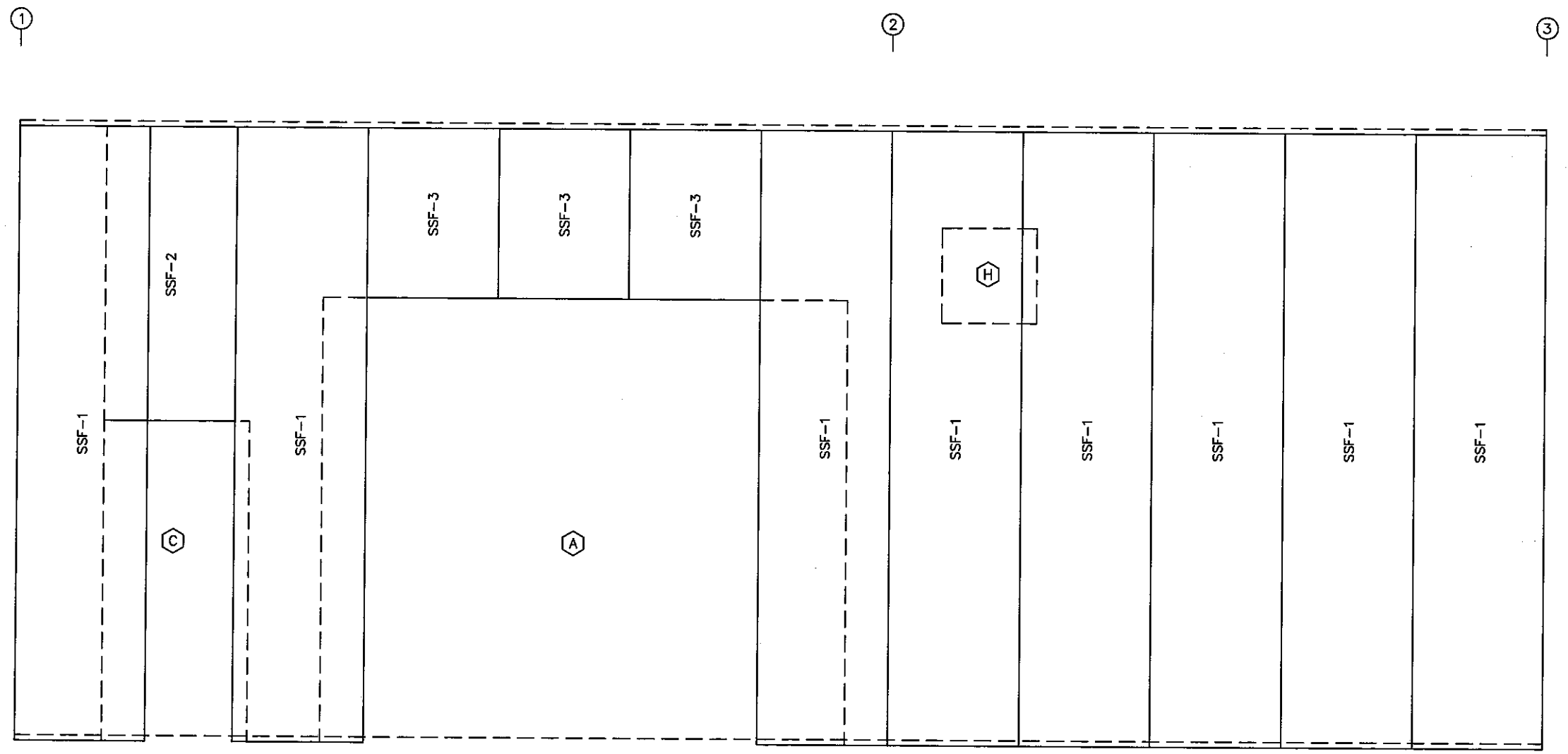
  

DRG	1330 E 37th Street N Wichita, KS 67218
FRAMING APPROVAL	City of Wichita, Kansas 2305 E 57th Street South Wichita, KS 67216
MANUFACTURERS	101 Airport Rd. Sturtevant, WI 53179

JOB NO.	16J0164A
REVISION NO.	
PAGE	E6 OF 14

PANEL TABLE FRAME LINE D		
QTY	MARK	LENGTH
8	SSF-1	14'-0"
1	SSF-2	6'-8 1/2"
3	SSF-3	3'-10 1/2"



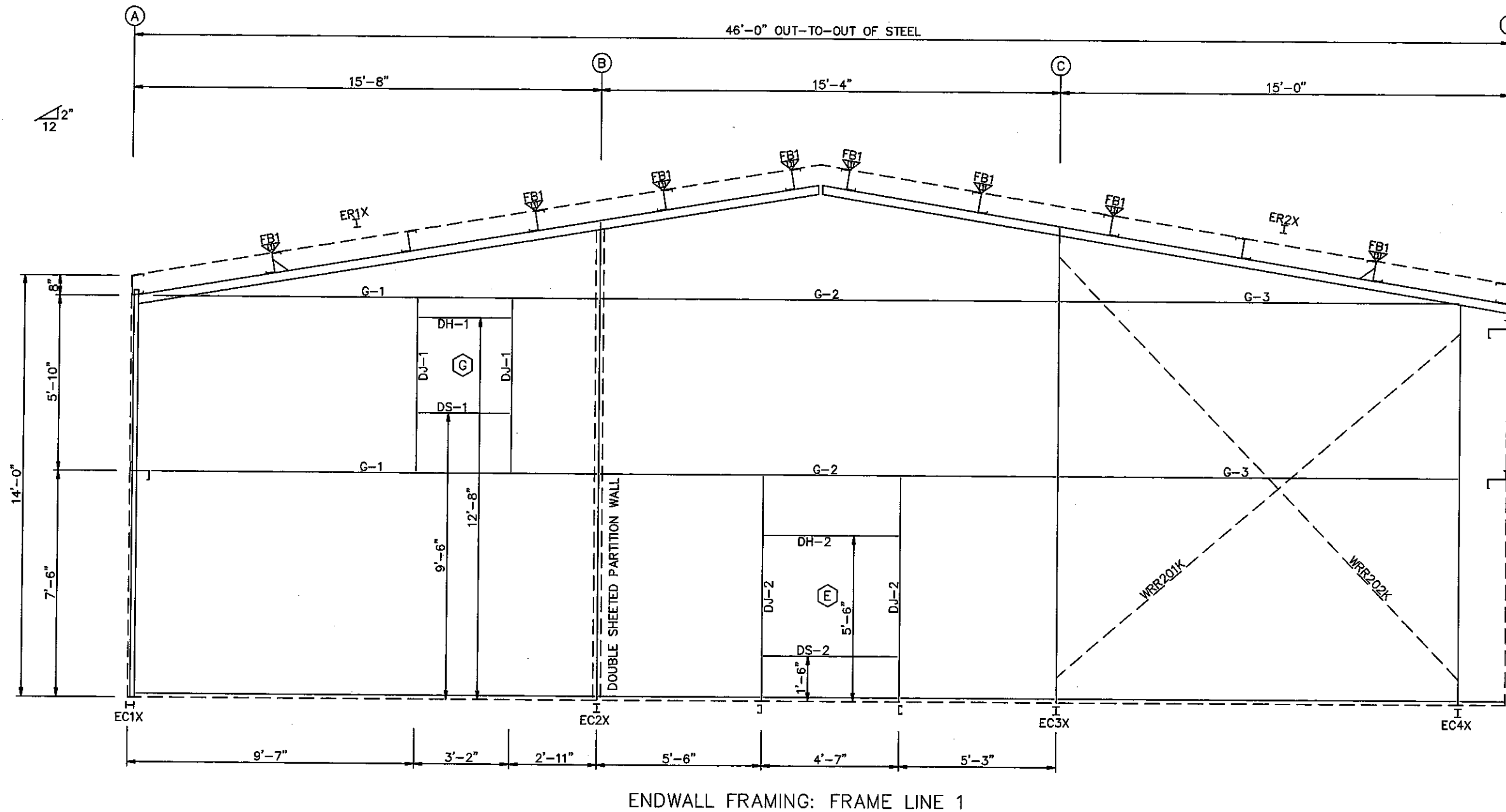
SIDEWALL SHEETING & TRIM: FRAME LINE D  
 PANELS: 24 Ga. R-PANEL COLOR NEEDED

DBC 1330 E. 37th Street N Wichita, KS 67218 City of Wichita, Kansas 2305 E. 57th Street South Wichita, KS 67216	ISSUE FRAMING APPROVAL DRAWINGS	DWG. CHK. ENG. P.E. DATE APPROVED DATE JH JOM SRJ JMW 8/29/18
GULF STATES MANUFACTURING COMPANY 101 AIRPORT RD. SHREVEPORT, LA 70578	RF 46-0 x 35-0 x 14-0 EH ROOF SLOPE 2:12	
JOB NO. 16J0164A		
REVISION NO.		
PAGE E7 OF 14		

FLANGE BRACE TABLE FRAME LINE 1	
VID MARK	LENGTH
1 FB1	2'-10"

BOLT TABLE FRAME LINE 1				
LOCATION	QUAN	TYPE	DIA	LENGTH
EC-1/ER-1	4	A325	1/2"	1 1/4"
ER-1/ER-2	8	A325	3/4"	2"
Int_Column/Raf	4	A325	1/2"	1 1/4"
EC-4/ER-2	4	A325	1/2"	1 1/4"

MEMBER TABLE FRAME LINE 1		
MARK	PART	LENGTH
EC1X	W8	9.62
EC2X	W8	9.62
EC3X	W8	9.62
EC4X	W8	9.62
ER1X	W1010.47	
ER2X	W1010.47	
DJ-1	8X25C14	
DJ-2	8X25C14	
DH-1	8x25C16	
DH-2	8x25C16	
DS-1	8x25C16	
DS-2	8x25C16	
G-1	8X25z16	
G-2	8X25z16	
G-3	8X25z16	
WRR201K	WRR20_K	18'-6"
WRR202K	WRR20_K	20'-0"



ENDWALL FRAMING: FRAME LINE 1

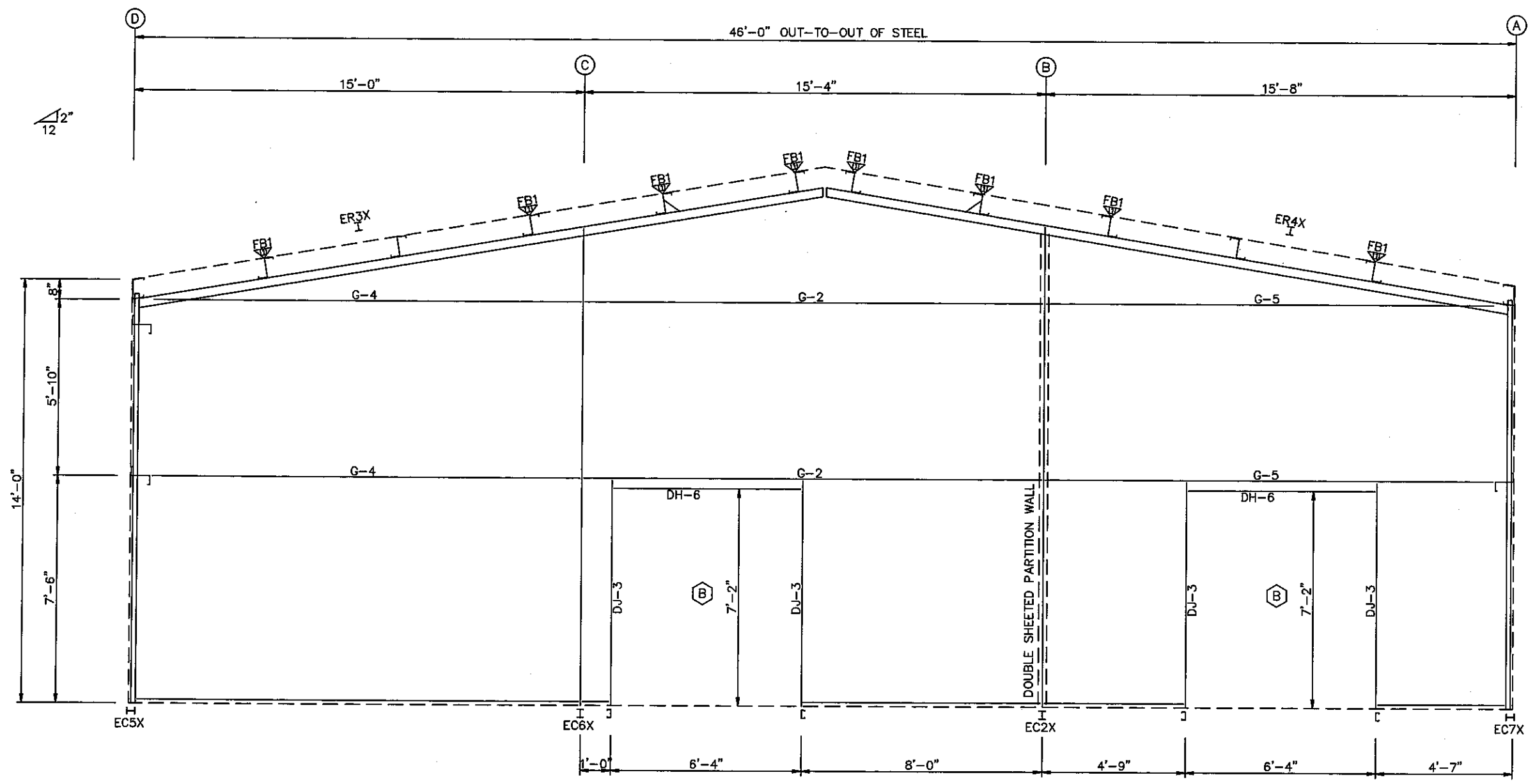
ISSUE	DATE	APPROVED	DATE	APPROVED
FRAMING APPROVAL DRAWINGS	6/29/16			



FLANGE BRACE TABLE FRAME LINE 3		
VID	MARK	LENGTH
1	FBI	2'-10"

BOLT TABLE FRAME LINE 3				
QTY	TYPE	DIA	LENGTH	
4	A325	1 1/2"	1 1/4"	
8	A325	3/4"	2"	
4	A325	1 1/2"	1 1/4"	

MEMBER TABLE FRAME LINE 3		
MARK	PART	LENGTH
EC2X	WB 9.62	
EC5X	WB 9.62	
EC6X	WB 9.62	
EC7X	WB 9.62	
ER3X	W1010.47	
ER4X	W1010.47	
DJ-3	8X25C14	
DH-6	8X25C16	
G-2	8X25z16	
G-4	8X25z16	
G-5	8X25z16	



ENDWALL FRAMING: FRAME LINE 3

DATE	APPROVED	DATE	APPROVED
9/29/16			

ISSUE	DATE	BY	CHK	ENG	PE	APP
1						

DESCRIPTION	DATE
PROVIDE APPROVAL, DIMENSIONS	

DBC  
1350 E 37th Street N  
Wichita, KS 67218  
City of Wichita Kansas  
2305 E 57th Street South  
Wichita, KS 67216

**GULF STATES**  
MANUFACTURERS  
A INFLUOR COMPANY  
1611 W. 10th St.  
STANFORD, KS 67359  
C/O GULF STATES

JOB NO.  
16J0164A

REVISION NO.

PAGE  
E10 OF 14



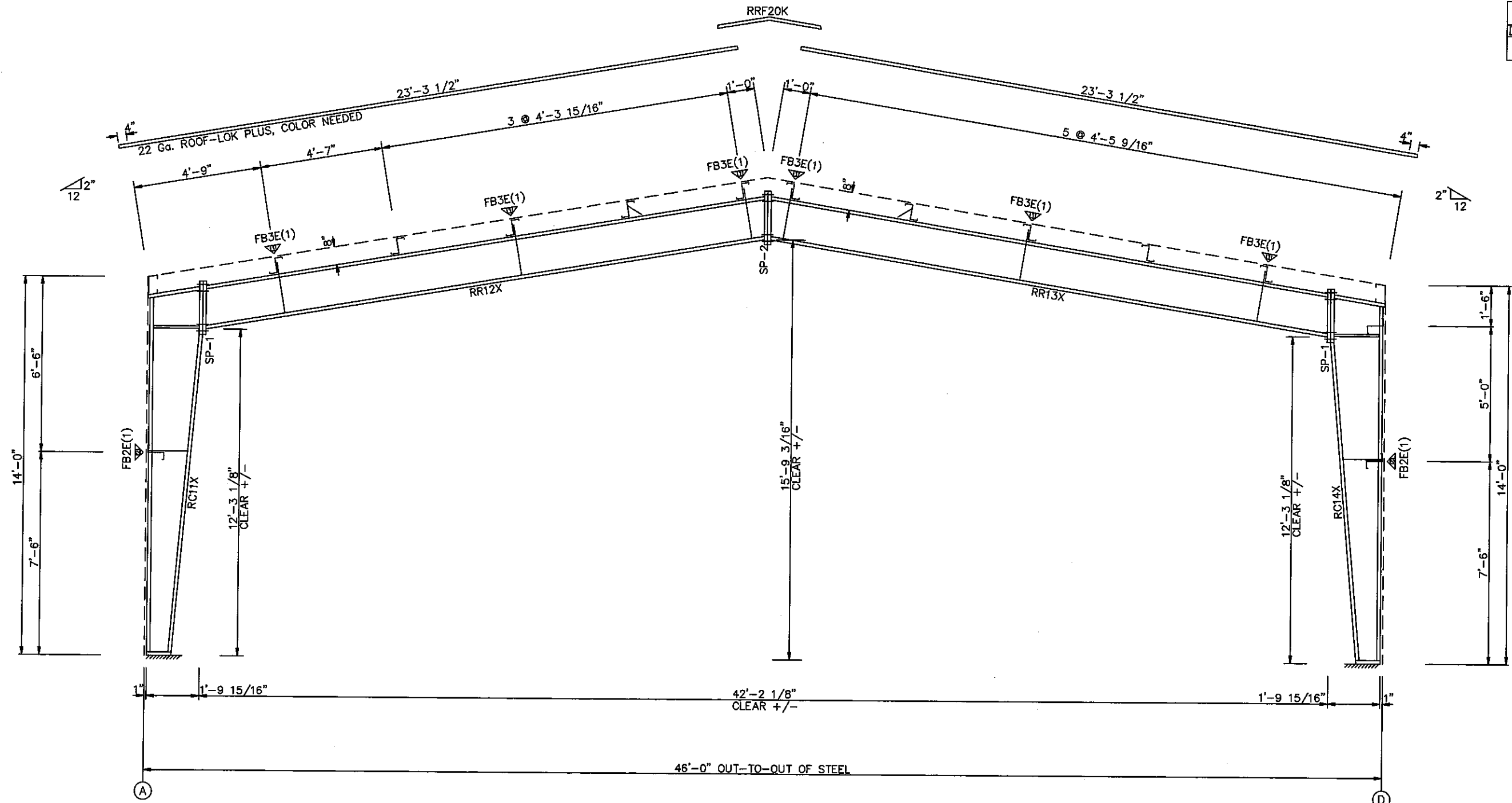


SPLICE PLATE & BOLT TABLE									
Mark	Qty		Int	Type	Dia	Length	Width	Thick	Length
	Top	Bot							
SP-1	4	4	0	A325	0.750	2.00	6"	1/2"	2'-2"
SP-2	4	4	0	A325	0.750	2.00	5"	1/2"	2'-1 15/16"

MEMBER TABLE							
Mark	Web Depth		Web Plate		Outside Flange		Inside Flange
	Start/End	Thick	Length	W x Thk x Length	W x Thk x Length	W x Thk x Length	
RC11X	8.0/21.5	0.125	141.9	5 x 3/16" x 159.4	5 x 1/4" x 142.5		
	21.5/21.5	0.164	21.0	5 x 3/16" x 23.0			
RR12X	16.0/16.0	0.135	160.0	5 x 3/16" x 255.3	5 x 5/16" x 172.0		
	16.0/16.0	0.125	97.9		5 x 3/16" x 83.2		
RR13X	16.0/16.0	0.125	97.9	5 x 3/16" x 255.3	5 x 3/16" x 83.2		
	16.0/16.0	0.135	160.0		5 x 5/16" x 172.0		
RC14X	21.5/21.5	0.164	21.0	5 x 3/16" x 23.0	5 x 1/4" x 142.5		
	21.5/8.0	0.125	141.9	5 x 3/16" x 159.4			

FLANGE BRACES: Both Sides(U.N.)  
 FBxxE(1)  
 E - 12GAX334

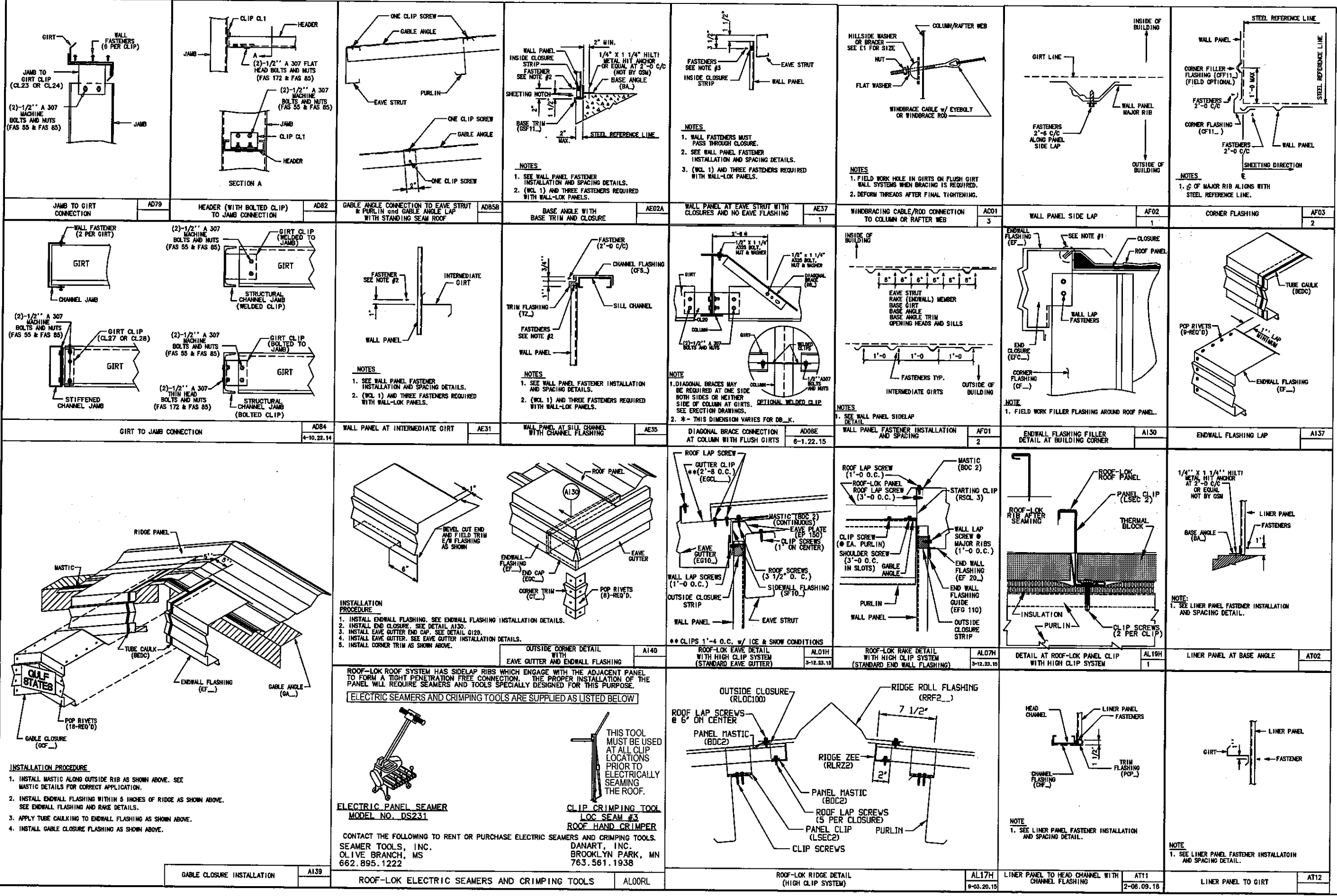
CONNECTION PLATES	
ID	Mark/Part
1	CL13
2	h2



RIGID FRAME ELEVATION: FRAME LINE 2

DATE	APPROVED	DATE	ISSUE
6/22/16		6/22/16	FRAMING APPROVAL DRAWINGS
DRN	CHK	ENG	P.L.E.
JAN	JOM	SAR	JHW
DBC 1330 E 37th Street N Wichita, KS 67218 City of Wichita, Kansas 2305 E 57th Street South Wichita, KS 67216 RF 46'-0 x 35'-0 x 14'-0 BH ROOF SLOPE 2:12			
101 AIRPORT RD. SHARONVILLE, MS 38759 GAO OF FILE			
JOB NO.		16J0164A	
REVISION NO.			
PAGE		E14 OF 14	





DATE	APPROVED	DATE	APPROVED
8/30/16			
CHK	ENG	P. E.	DATE
JHL			
ISSUE	CONSTRUCTION APPROVAL DRAWINGS		
SEE SHEET E1 OF 1			
JOB NO. 16J0164A			
REVISION NO.			
PAGE 52			













