

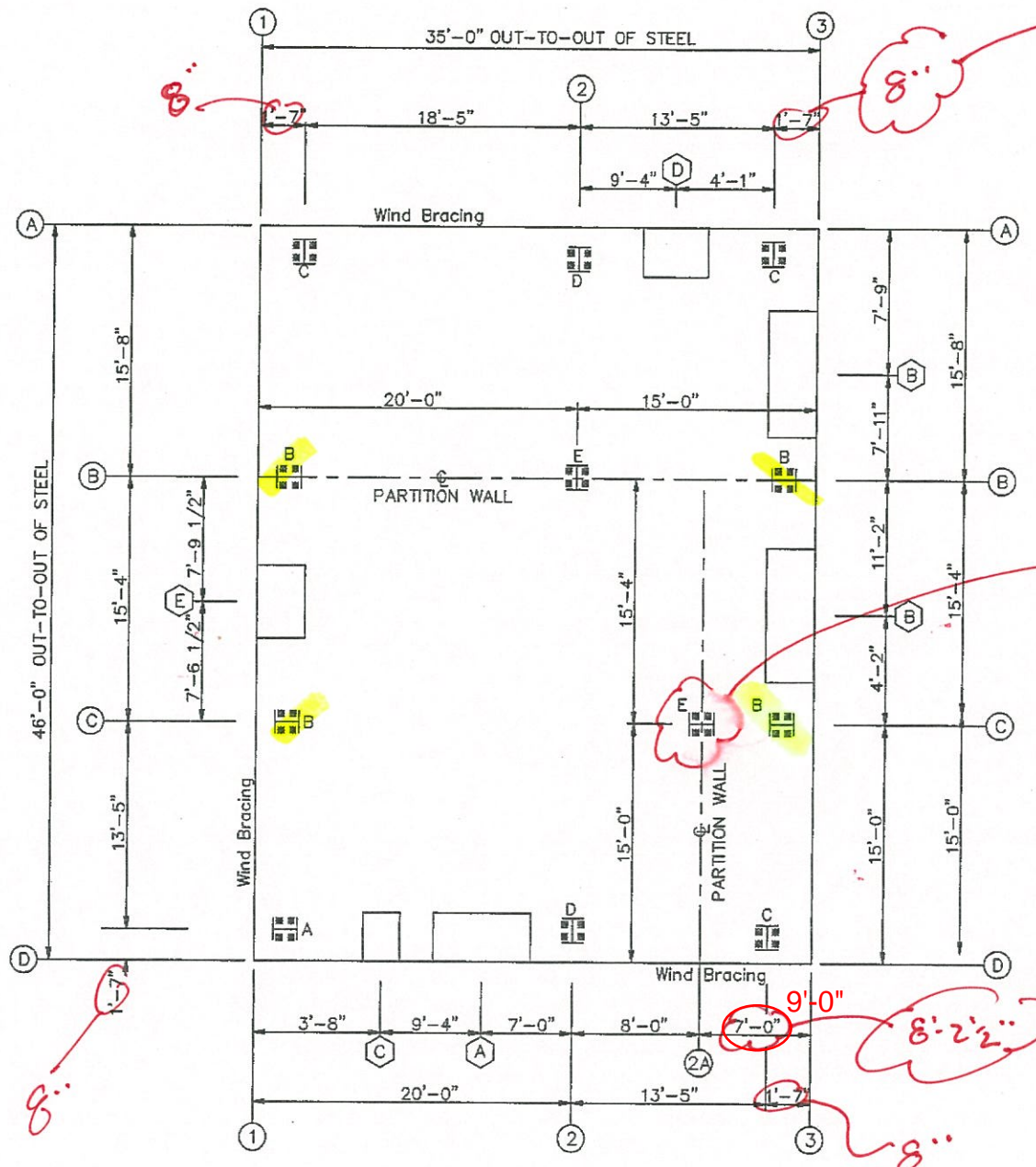
GENERAL NOTES

1. THIS PLAN IS FOR THE LAYOUT AND SETTING OF ANCHOR BOLTS ONLY. THE FOUNDATION DESIGN PROFESSIONAL SHOULD REVIEW AND INCORPORATE THIS PLAN INTO THE FOUNDATION DESIGN AND DETAILS.
2. THE FOUNDATION MUST BE DESIGNED TO RESIST THE REACTIONS SHOWN ON THE REACTION SHEET.
3. BRACING REACTIONS MUST BE COMBINED WITH LONGITUDINAL WIND (LONG WIND) FROM THE ELEMENTARY FRAME REACTIONS TO ACHIEVE MAXIMUM SHEAR AND UPLIFT.
4. ALL DIMENSIONS ARE BUILDING STEEL DIMENSIONS. REQUIREMENTS FOR SETTING NOTCHES, BRICK LEDGES, CHAMFERS, ETC. MUST BE ACCOUNTED FOR BY OTHERS.
5. ITEMS IN THE FOUNDATION (I.E. ANCHOR BOLTS, HAIRPINS, SHEAR ANGLES, ETC.) ARE TO BE FURNISHED BY CONCRETE CONTRACTOR UNLESS NOTED.
6. DIMENSION GOVERN. DRAWINGS ARE NOT TO SCALE.
7. ANCHOR BOLT SIZES ARE BASED ON A MATERIAL YIELD STRENGTH $F_y = 36$ KSI.

GENERAL NOTES:

FOR THE BUILDING(S) SUPPLIED BY THIS METAL BUILDING MANUFACTURER TO BOLT UP AND FIT PROPERLY ON THE CONCRETE, THE ANCHOR BOLTS MUST BE LOCATED BASED UPON THESE ANCHOR BOLT DRAWINGS. ANY DEVIATION FROM THE SETTINGS ON THESE DRAWINGS WILL CREATE AN OPPORTUNITY FOR THE MATERIALS SUPPLIED TO NOT FIT PROPERLY. THIS METAL BUILDING MANUFACTURER WILL NOT BE RESPONSIBLE FOR COSTS ASSOCIATED WITH REQUIRED MODIFICATIONS TO THE STEEL FROM IMPROPERLY LOCATED ANCHOR BOLTS.

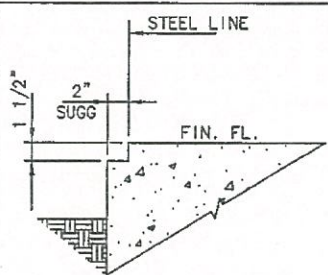
QTY.	MARK	DIA.	THREAD
40	AB1	1/2"	3"
48	AB3	3/4"	3"
40	1/2" DIA. NUTS		
48	3/4" DIA. NUTS		



NOTE: 16" SQ. PIER @ CORNERS FOR COL. BEARING. KEEP DIM'S @ 8" TO CENTER COLUMNS ON PIERS.

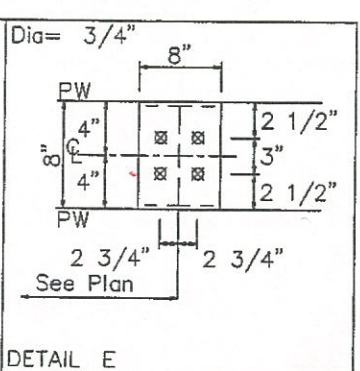
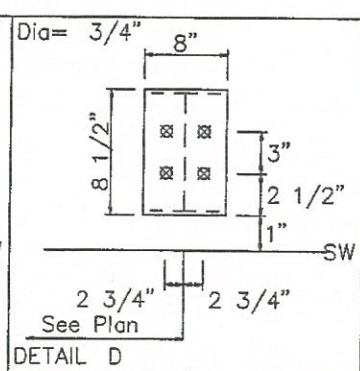
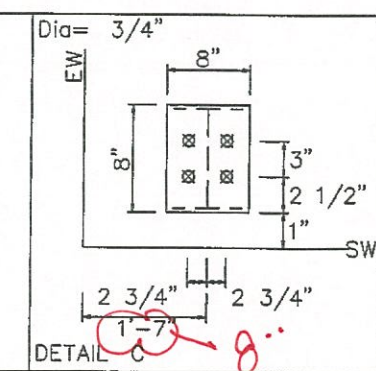
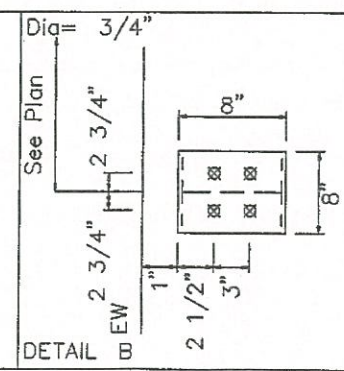
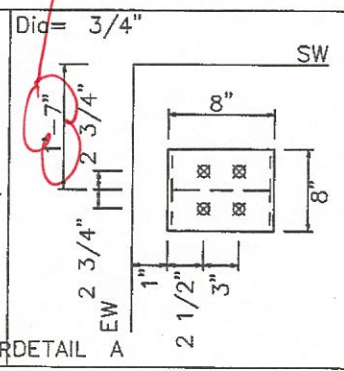
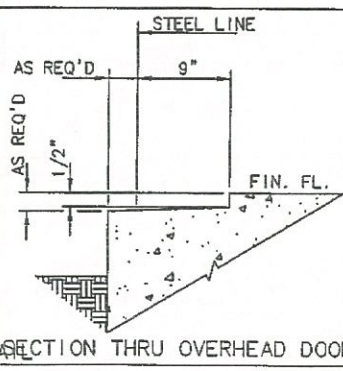
NOTE: CURRENTLY NO FR. @ THIS LOC. → G.C. PROVIDE PAD FR. @ COL. BEU. LOC.

ARCH VERIFY



SUGGESTED NOTCH DETAIL
(RECOMMENDED FOR USE ON ALL BLDGS WITHOUT BASE ANGLE TRIM)

AS REQ'D	1 1/4"	1 1/4"	1 1/4"	REQ'D
A	12-0 x 10-0	6-1 1/4	6-1 1/4	1 (ONE) REQ'D
B	6-4 x 7-2	3-3 1/4	3-3 1/4	2 (TWO) REQ'D
C	3-4 x 7-2	1-8 1/4	1-8 1/4	5 (FIVE) REQ'D
D	5-4 x 5-4	2-9 1/4	2-9 1/4	1 (ONE) REQ'D
E	4-7 x 4-0	2-4 3/4	2-4 3/4	1 (ONE) REQ'D



ANCHOR BOLT PLAN
NOTE: All Base Plates @ 100'-0" (U.N.)
--- Partition Wall (See KeyDwg)

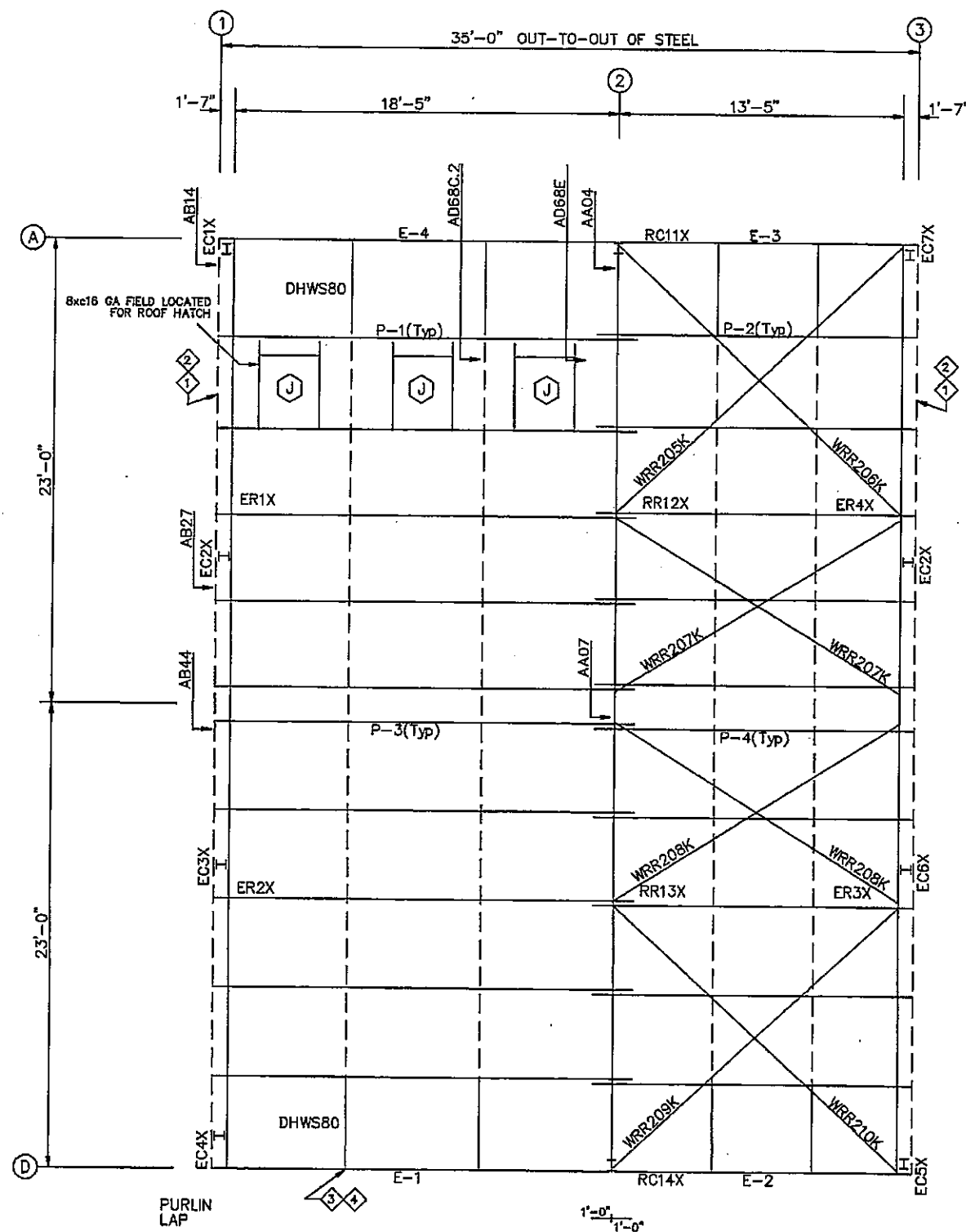
DATE	APPROVED	DATE	APPROVED
6/29/16	JRM	6/29/16	JRM

ISSUE	DESCRIPTION
ANCHOR BOLT - APPROVAL DRAWINGS	

DRG	1350 E 37th Street N	Wichita, KS 67218
MANUFACTURER	City of Wichita Kansas	
ADDRESS	2305 E 37th Street South	
WICHITA, KS 67216		

RF 46-0 x 35-0 x 14-0 BH	ROOF SLOPE 2:12
--------------------------	-----------------

JOB NO.	16J0164A
REVISION NO.	
PAGE	B1 OF 2



ROOF FRAMING PLAN

ANGLE TABLE ROOF PLAN			MEMBER TABLE ROOF PLAN		
ID	PART	LENGTH	MARK	PART	LENGTH
1	GA2	10'-5"	P-1	8x25216	
2	GA1	15'-5"	P-2	8x25216	
3	SCL4	SCRAP	P-3	8x25216	
4	RA3	15'-6"	P-4	8x25216	
			E-1	8ES14GA	
			E-2	8ES14GA	
			E-3	8ES14GA	
			E-4	8ES14GA	
			WRR205K	WRR20_K	18'-7"
			WRR206K	WRR20_K	18'-11"
			WRR207K	WRR20_K	16'-5"
			WRR208K	WRR20_K	16'-6"
			WRR209K	WRR20_K	18'-9"
			WRR210K	WRR20_K	18'-5"
			DHWS80	DHWS801K	

DATE	APPROVED	DATE	DATE	DATE	DATE	DATE	DATE	DATE	DATE

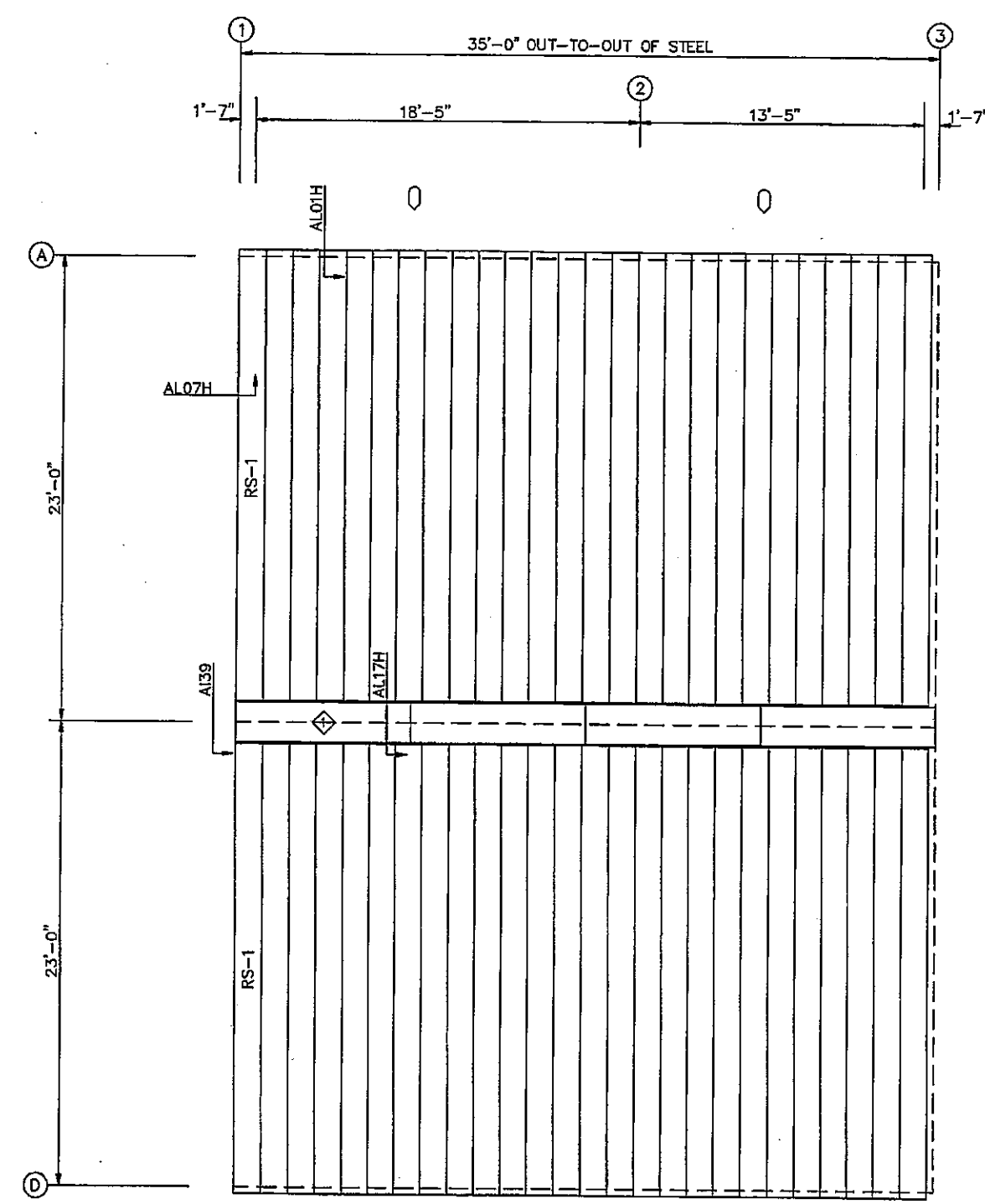
DBC 1330 E 37th Street N Wichita, KS 67218 City of Wichita, Kansas 2305 E 57th Street South Wichita, KS 67219 RF: 46-0 x 35-0 x 14-0 EH ROOF SLOPE 2:12	ESSE FRAMING APPROVAL DRAWINGS	16J0164A 101 ARROWT RD. STANLEY, MO 63259 END OF FILE
---	-----------------------------------	--

JOB NO.	16J0164A
REVISION NO.	
PAGE	E2 OF 14

TRIM TABLE			
ROOF PLAN			
QTY	MARK	LENGTH	
1	4	RRF20K	10'-6"

PANEL TABLE		
ROOF PLAN		
QTY	MARK	LENGTH
52	RS-1	23'-3 1/2"

○ DOWNSPOUT LOCATIONS



ROOF SHEETING PLAN
 PANELS: 22 Ga. ROOF-LOK PLUS - COLOR NEEDED
DARK BRONZE

DATE	APPROVED	DATE	APPROVED
8/29/16			

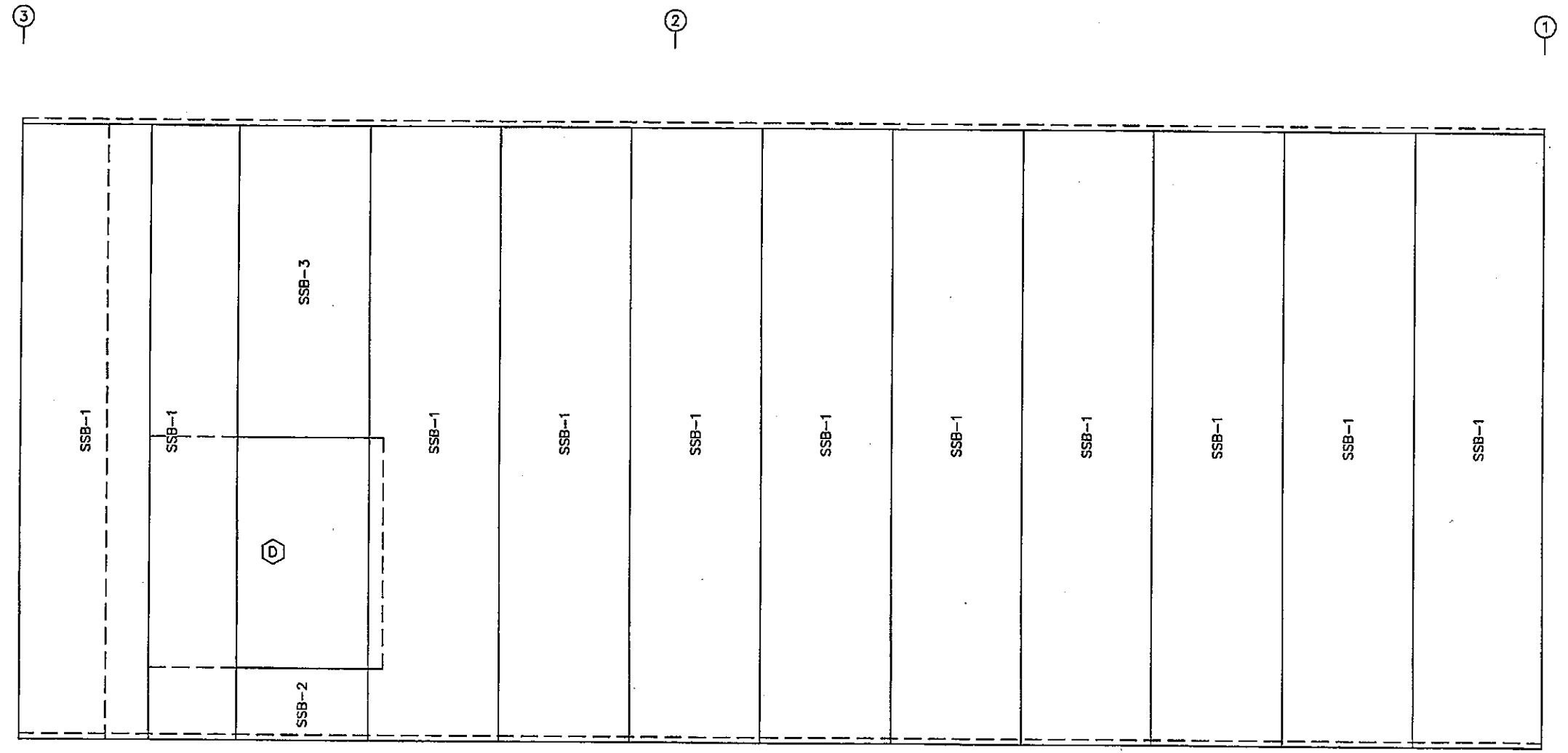
CHK	ENG	P.E.	DATE
DR	JM	SKR	8/29/16

ISSUE	DATE
FINAL APPROVAL DRAWING	

DBC 1330 E. 37th Street N Wichita, KS 67218 City of Wichita, Kansas 2305 E. 37th Street South Wichita, KS 67216	REF: 46-0 x 35-0 x 14-0 BI ROOF SLOPE 2:12
--	--

GULF STATES MANUFACTURING COMPANY A PULASKI COMPANY 2011 Airport Blvd. Stateville, IL 62458 (618) 433-1100	JOB NO. 16J0164A
	REVISION NO.
	PAGE E3 OF 14

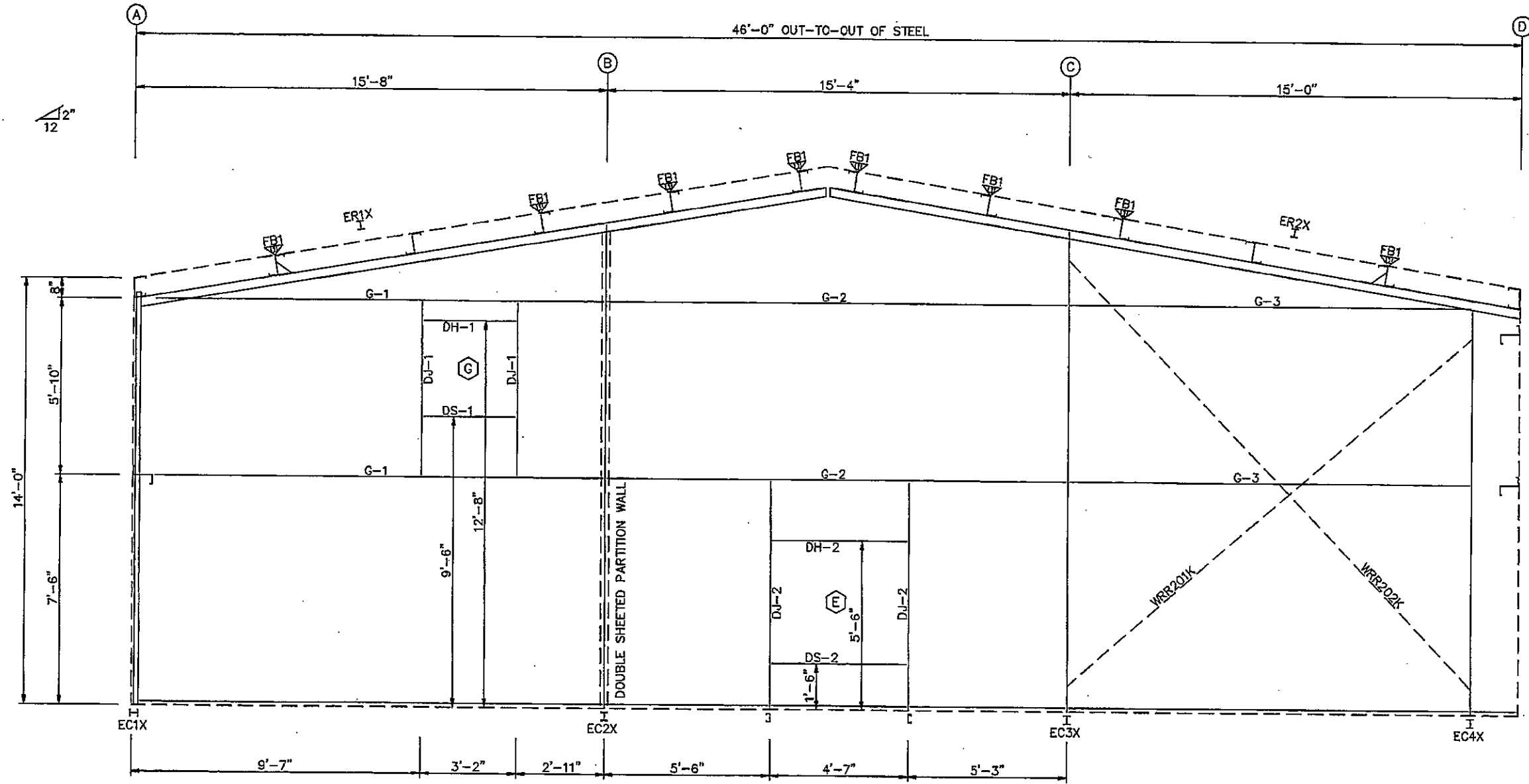
PANEL TABLE		
FRAME LINE A		
QTY	MARK	LENGTH
11	SSB-1	14'-0"
1	SSB-2	3'-0"
1	SSB-3	7'-1 1/2"



SIDEWALL SHEETING & TRIM: FRAME LINE A
 PANELS: 24 Ga. R-PANEL - COLOR NEEDED

	DBC 1330 E. 37th Street N Wichita, KS 67218 City of Wichita, Kansas 2305 E 57th Street South Wichita, KS 67218	ISSUE FRAMING APPROVAL DRAWING	LWR JLD	CLK JOM	END SKR	P.E. JRF	DATE 6/29/16	APPROVED	DATE
	RF 46-0 x 35-0 x 14-0 EH ROOF SLOPE 2:12								
JOB NO. 16J0164A									
REVISION NO.									
PAGE E5 OF 14									

FLANGE BRACE TABLE FRAME LINE 1		BOLT TABLE FRAME LINE 1				MEMBER TABLE FRAME LINE 1			
VIDI MARK	LENGTH	LOCATION	QUAN	TYPE	DIA	LENGTH	MARK	PART	LENGTH
1 FB1	2'-10"	EC-1/ER-1	4	A325	1/2"	1 1/4"	EC1X	W8	9.62
		ER-1/ER-2	8	A325	3/4"	2"	EC2X	W8	9.62
		Int_Column/Raf	4	A325	1/2"	1 1/4"	EC3X	W8	9.62
		EC-4/ER-2	4	A325	1/2"	1 1/4"	EC4X	W8	9.62
							ER1X	W1010.47	
							ER2X	W1010.47	
							DJ-1	8X25C14	
							DJ-2	8X25C14	
							DH-1	8x25C16	
							DH-2	8x25C16	
							DS-1	8x25C16	
							DS-2	8x25C16	
							G-1	8X25z16	
							G-2	8X25z16	
							G-3	8X25z16	
							WRR201K	WRR20_K	18'-6"
							WRR202K	WRR20_K	20'-0"



ENDWALL FRAMING: FRAME LINE 1

DATE	APPROVED	DATE	ISSUE
8/29/16			

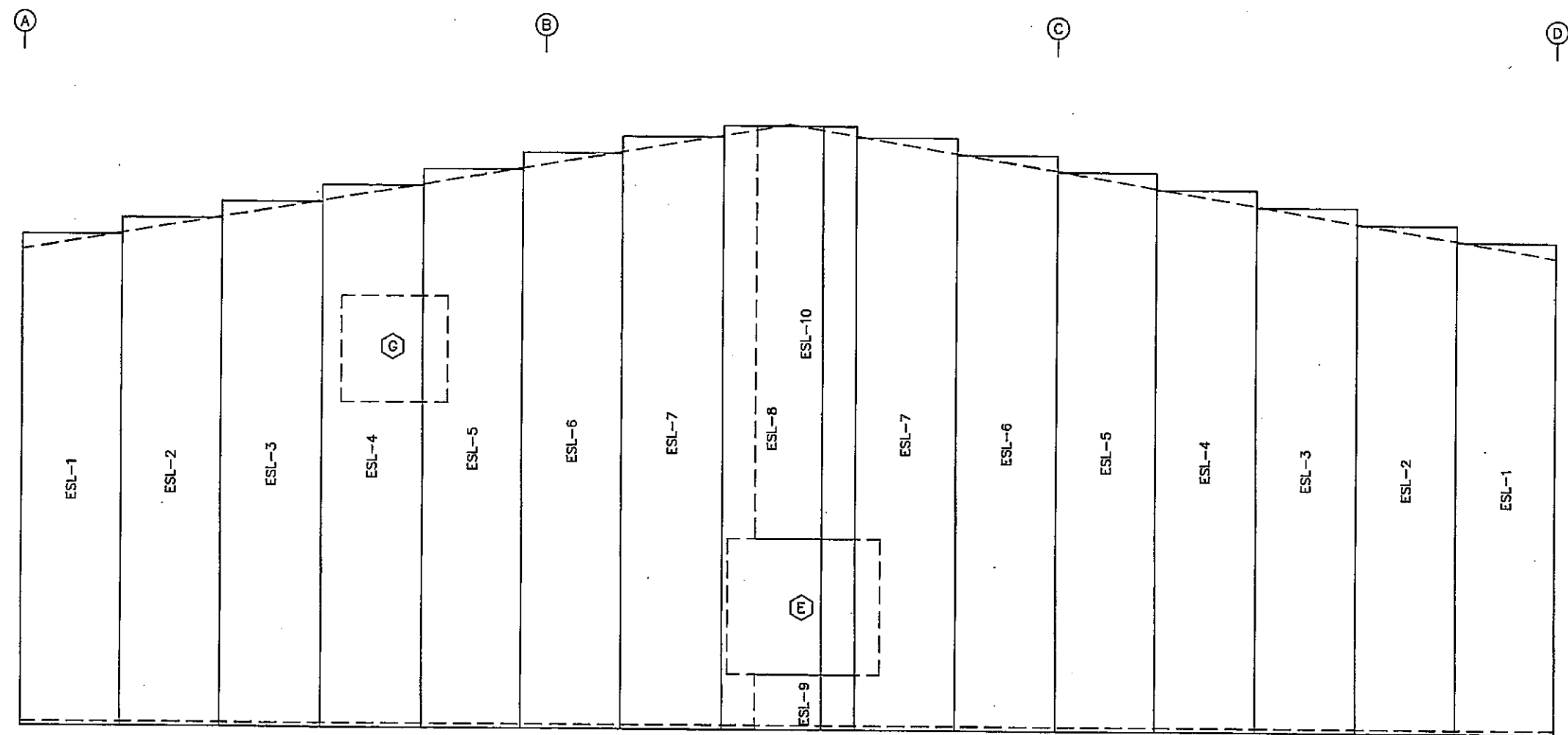
DRN	CHK	ENR	P.E.	DATE	APPROVAL
JUL	ARM	SKR	LRM	8/29/16	

DPIC	1330 E 37th Street N	Wichita, KS 67218
City of Wichita, Kansas	2305 E 57th Street South	Wichita, KS 67216

MANUFACTURERS	101 AIRPORT RD.	STARKVILLE, MS 38758
FILE		

JOB NO.	16J0164A
REVISION NO.	
PAGE	E8 OF 14

PANEL TABLE		
FRAME LINE 1		
QTY	MARK	LENGTH
2	ESL-1	14'-7"
2	ESL-2	15'-1"
2	ESL-3	15'-7"
2	ESL-4	16'-1"
2	ESL-5	16'-7"
2	ESL-6	17'-1"
2	ESL-7	17'-7"
1	ESL-8	17'-11"
1	ESL-9	3'-0"
1	ESL-10	12'-3 1/2"



ENDWALL SHEETING & TRIM: FRAME LINE 1.
 PANELS: 24 Ga. R-PANEL - COLOR NEEDED

ISSUE	DATE		APPROVED	
	DATE	DATE	DATE	DATE
1				
2				
3				
4				
5				
6				
7				
8				
9				
10				

DBC
 1330 E. 37th Street N
 Wichita, KS 67218
 City of Wichita, Kansas
 2245 E. 57th Street, South
 Wichita, KS 67218
 RF 46-0 x 35-0 x 14-0 EH ROOF SLOPE 2:12

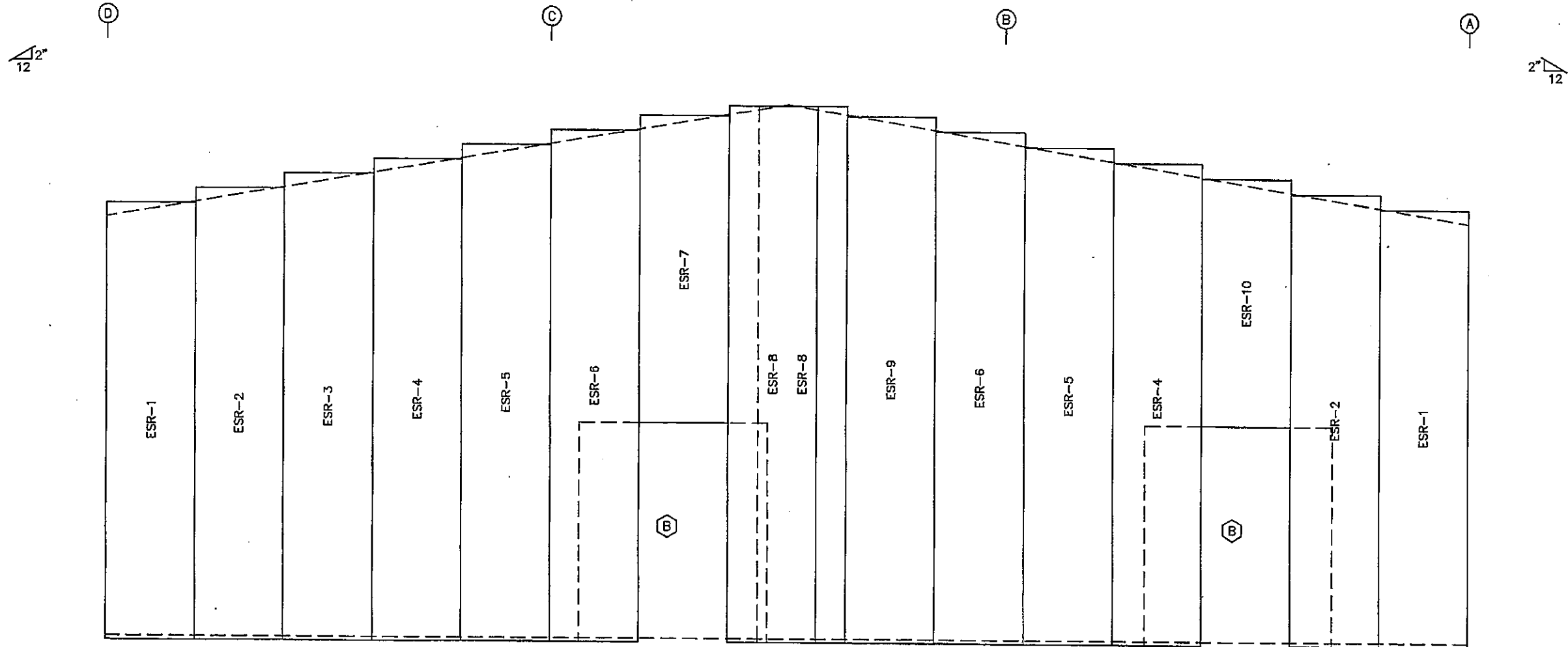
GULF STATES
 MANUFACTURING
 A PULVERIZED COMPANY
 101 IMPROVE RD.
 ST. LOUIS, MO 63128
 TEL:

JOB NO.
16J0164A

REVISION NO.

PAGE
E9 OF 14

PANEL TABLE FRAME LINE 3		
QTY	MARK	LENGTH
2	ESR-1	14'-7"
2	ESR-2	15'-1"
1	ESR-3	15'-7"
2	ESR-4	16'-1"
2	ESR-5	16'-7"
2	ESR-6	17'-1"
1	ESR-7	10'-3 1/4"
2	ESR-8	17'-11"
1	ESR-9	17'-7"
1	ESR-10	8'-3 1/4"



ENDWALL SHEETING & TRIM: FRAME LINE 3
 PANELS: 24 Ga. R-PANEL - COLOR NEEDED

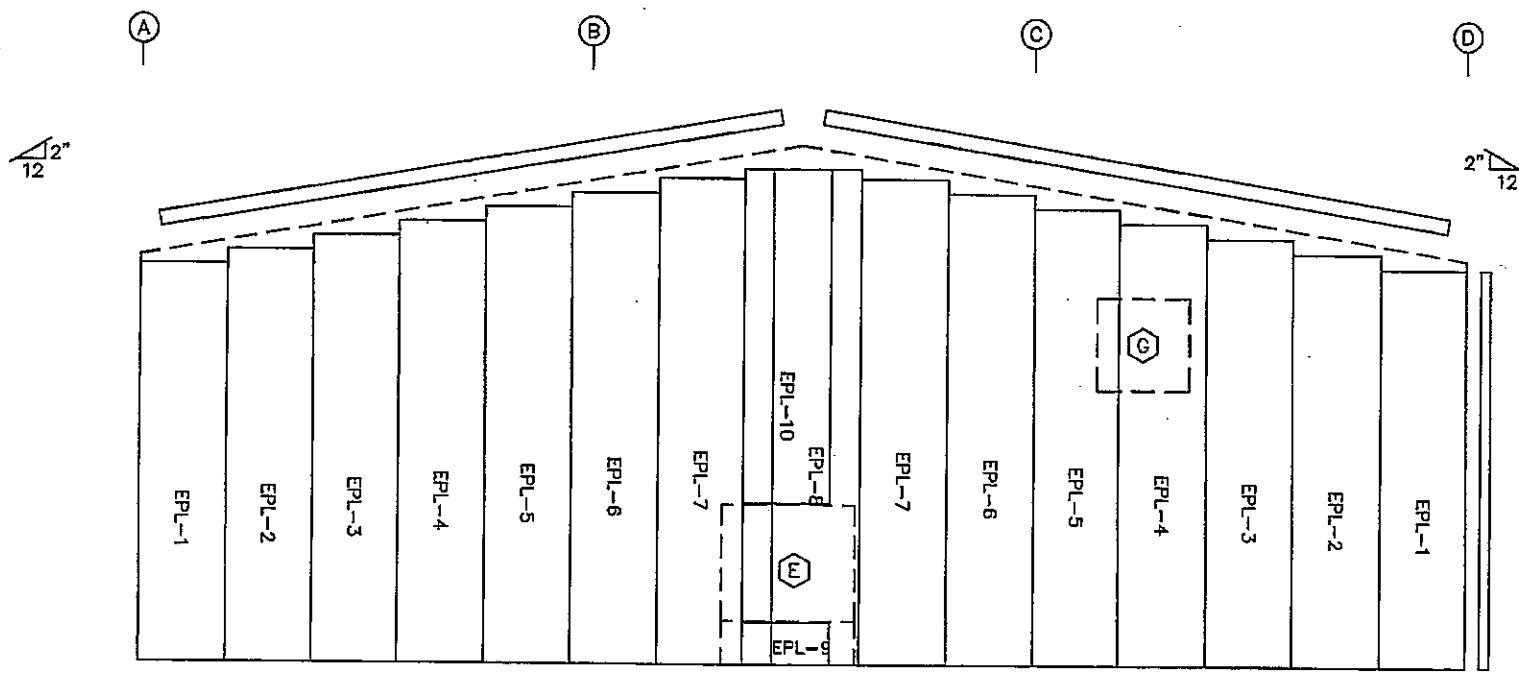
GULF STATES MANUFACTURING COMPANY 100 WINDYCREST STAMPALE, MS 38959 CAD: GP	1600 1330 E 37th Street N Wichita, KS 67218 City of Wichita, Kansas 2305 E 57th Street South Wichita, KS 67216	ISSUE FINANCIAL APPROVAL DATES	DATE 8/27/18	APPROVED DATE
	RF 46-0 x 35-0 x 14-0 EI ROOF SLOPE 2:12	DWG CHK ING P.L. JUN SR JUN SR JUN SR	DATE 8/27/18	DATE

JOB NO. 16J0164A

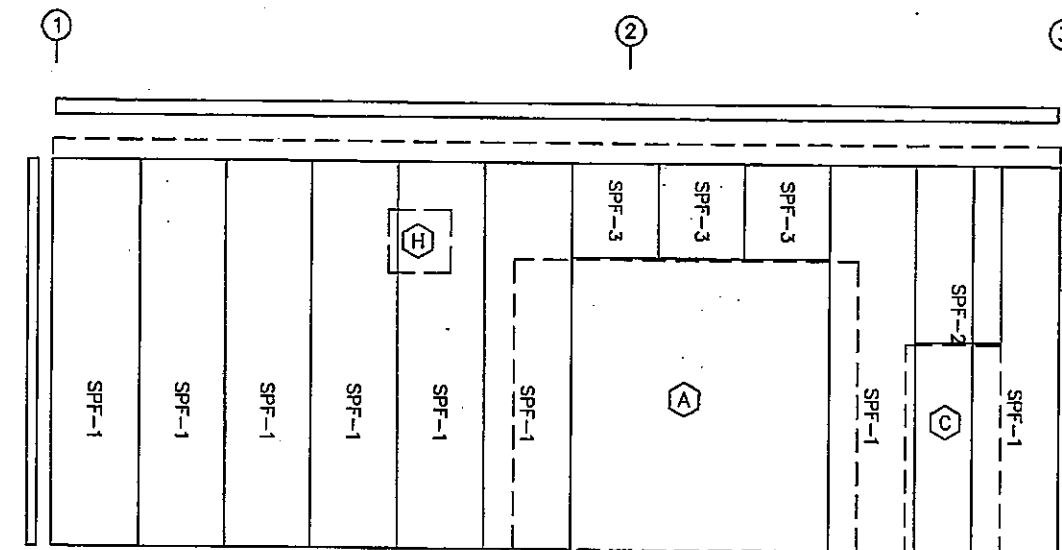
REVISION NO.

PAGE E11 OF 14

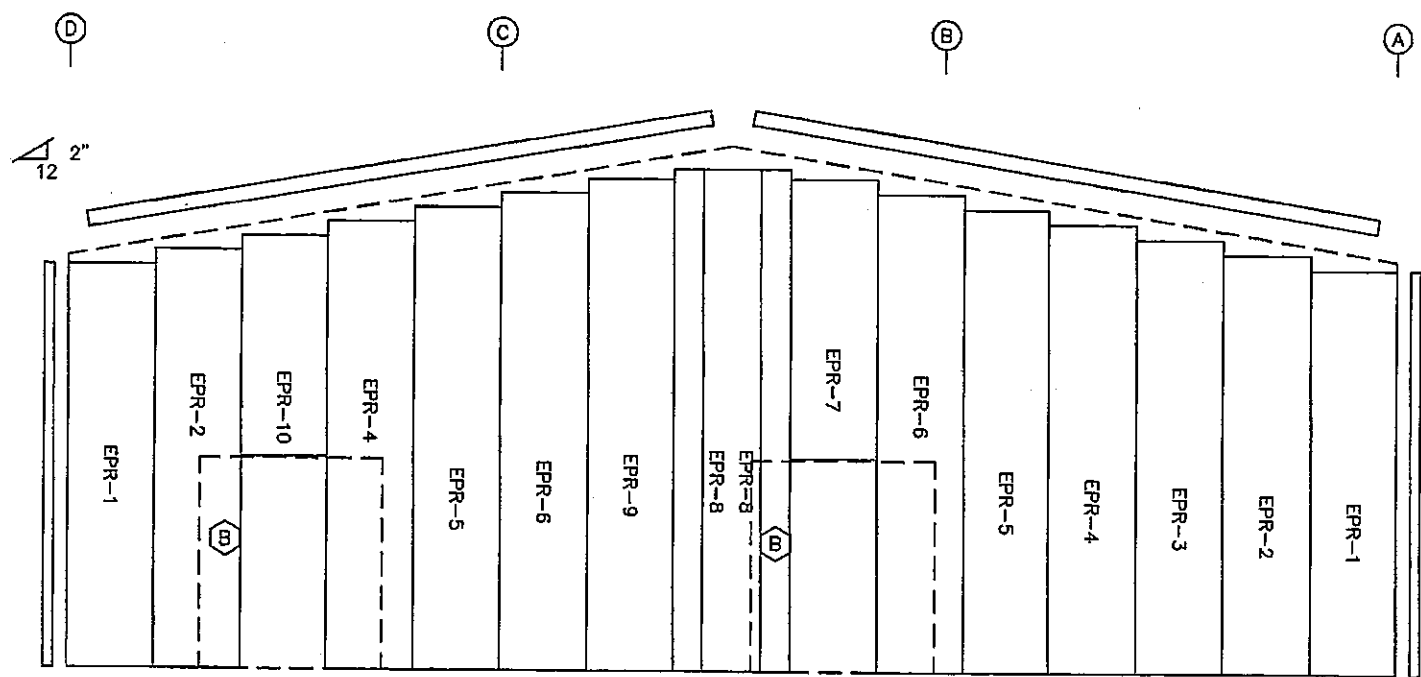
LINER PANEL TABLE FRAME LINE 1 D 3 A		LINER PANEL TABLE FRAME LINE 1 D 3 A	
MARK	LENGTH	MARK	LENGTH
SPB-1	13'-3 1/2"	EPL-1	13'-8 1/4"
SPB-2	1'-5 1/4"	EPL-2	14'-2 1/4"
SPB-3	6'-5 3/4"	EPL-3	14'-8 1/4"
RP-1	13'-11 3/4"	EPL-4	15'-2 1/4"
RP-2	9'-8 1/2"	EPL-5	15'-8 1/4"
RP-3	9'-7 1/4"	EPL-6	16'-2 1/4"
RP-4	13'-8 1/2"	EPL-7	16'-8 1/4"
		EPL-8	17'-0 1/4"
		EPL-9	1'-5 1/4"
		EPL-10	11'-5 1/2"
		SPF-1	13'-3 1/2"
		SPF-2	6'-0 3/4"
		SPF-3	3'-2 3/4"
		EPR-1	13'-8 1/4"
		EPR-2	14'-2 1/4"
		EPR-3	14'-8 1/4"
		EPR-4	15'-2 1/4"
		EPR-5	15'-8 1/4"
		EPR-6	16'-2 1/4"
		EPR-7	9'-5 1/2"
		EPR-8	17'-0 1/4"
		EPR-9	16'-8 1/4"
		EPR-10	7'-5 1/2"



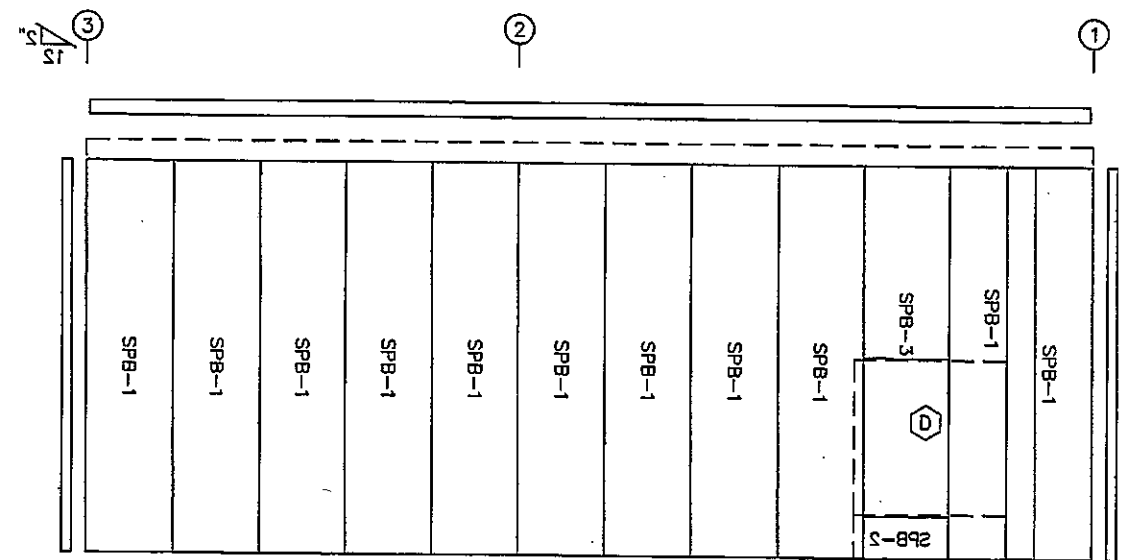
ENDWALL LINER SHEETING & TRIM: FRAME LINE 1
PANELS: 24 Ga. R-PANEL - COLOR NEEDED



SIDEWALL LINER SHEETING & TRIM: FRAME LINE D
PANELS: 24 Ga. R-PANEL - COLOR NEEDED



ENDWALL LINER SHEETING & TRIM: FRAME LINE 3
PANELS: 24 Ga. R-PANEL - COLOR NEEDED



SIDEWALL LINER SHEETING & TRIM: FRAME LINE A
PANELS: 24 Ga. R-PANEL - COLOR NEEDED

DATE	APPROVED	DATE	APPROVED
6/29/18			

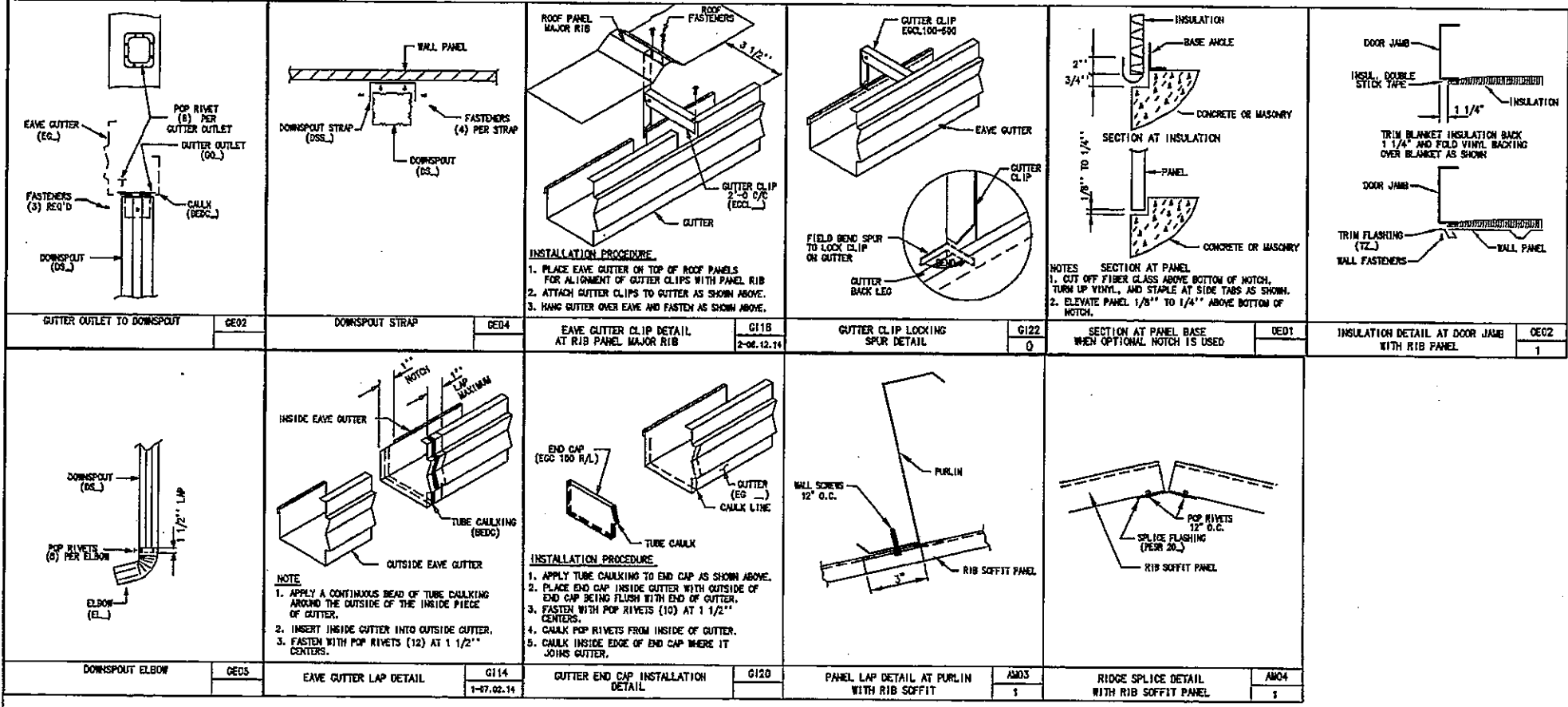
ISSUE	DATE	BY	CHK	APP
ISSUE				

DRN	CHK	ENG	P.L.	SR	SR	SR

DBS	1330 E. 37th Street, N Wichita, KS 67218
City of Wichita, Kansas	2305 E. 37th Street, South Wichita, KS 67218

STATE OF KANSAS	OFFICE OF THE SECRETARY OF REVENUE
MANUFACTURER'S TAX	STATE OF KANSAS

JOB NO.	16J0164A
REVISION NO.	
PAGE	E13 OF 14



GUTTER OUTLET TO DOWNSPOUT	GE02	DOWNSPOUT STRAP	DE04	EAVE GUTTER CLIP DETAIL AT RIB PANEL MAJOR RIB	G118	GUTTER CLIP LOCKING SPUR DETAIL	G122	SECTION AT PANEL BASE WHEN OPTIONAL NOTCH IS USED	DE01	INSULATION DETAIL AT DOOR JAMB WITH RIB PANEL	GE02
					2-06.12.14		0				1
DOWNSPOUT ELBOW	GE05	EAVE GUTTER LAP DETAIL	G114	GUTTER END CAP INSTALLATION DETAIL	G120	PANEL LAP DETAIL AT PURLIN WITH RIB SOFFIT	AM03	RIDGE SPLICE DETAIL WITH RIB SOFFIT PANEL	AM04		
			1-07.02.14				1		1		

ISSUE	DATE	APPROVED	DATE	APPROVED	DATE
	5/25/16				
CONSTRUCTION APPROVAL DRAWINGS	DATE	APPROVED	DATE	APPROVED	DATE
SEE SHEET ET OF 1	DATE	APPROVED	DATE	APPROVED	DATE
GULF STATES MANUFACTURERS A POLYMER COMPANY STAMPAULE, MS 38758 (602) 333-8021	DATE	APPROVED	DATE	APPROVED	DATE
JOB NO. 16J0164A	DATE	APPROVED	DATE	APPROVED	DATE
REVISION NO.	DATE	APPROVED	DATE	APPROVED	DATE
PAGE 5 4	DATE	APPROVED	DATE	APPROVED	DATE

