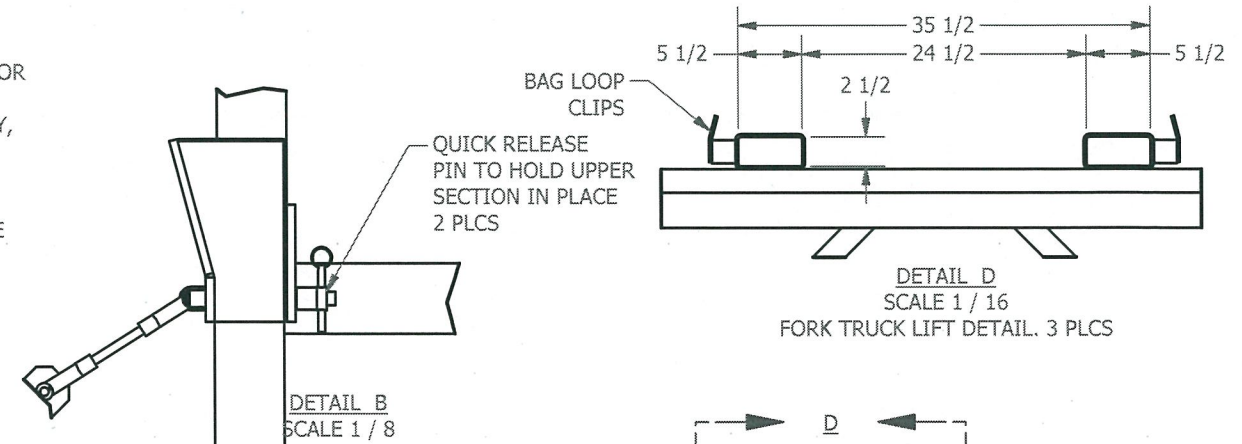


NEED OVERALL HEIGHT WHILE MOVING UPPER SECTION.

ITEM		QTY	DESCRIPTION	MANUFACTURER	PART NUMBER
1	1	NORD GEAR REDUCER, SK1SM163AF, WORM, 10:1 RATIO, 140TC, 1.1875 IN SS KEYED HOLLOW SHAFT, NSD-X3 PAINT	IPM		018-0101-1010
2	1	MOTOR, 1 1/2 HP, 230/460 VAC, 60 HZ, 3 PH, 1800 RPM, TYPE UNTX	US MOTORS		UN32T2BC
3	1	PARTICULATE FILTER/REGULATOR, 3/8", WITH GAUGE	PNEUMATICS		P22B-03G
4	1	SOLENOID VALVE, 3 WAY, 1/4", 120VAC, STAINLESS STEEL, WITH DIN CONNECTOR	ASCO		SC8320G200
5	1	UPPER FRAME ASSEMBLY	IPM		531-2001-16037
6	1	CONTROL PANEL	IPM		050-2300-0005
7	1	CAPACITIVE LEVEL SWITCH	IFM		KI0206

- NOTES:
1. IMP SHALL COMPLETELY ASSEMBLE AND FACTORY TEST THE SYSTEM PRIOR TO SHIPMENT.
 2. THE SYSTEM WILL SHIP IN 5 SEPERATE PIECES (LOWER FRAME ASSEMBLY, UPPER FRAME ASSEMBLY, BAG LIFT ASSEMBLY, AUGER TUBE AND AUGER). CONTRACTOR TO RE-ASSEMBLE SYSTEM ONCE ON SITE.
 3. ANCHOR BOLTS SHALL BE PROVIDED BY OTHERS.
 4. TO REMOVE UPPER SECTION. DISCONNECT AIR LINE (DETAIL A), REMOVE QUICK RELEASE PINS (DETAIL B), DISCONNECT FLEX CONNECTION FROM UPPER SECTION SIDE.
 5. FORK TRUCK FROM REAR VIEW.

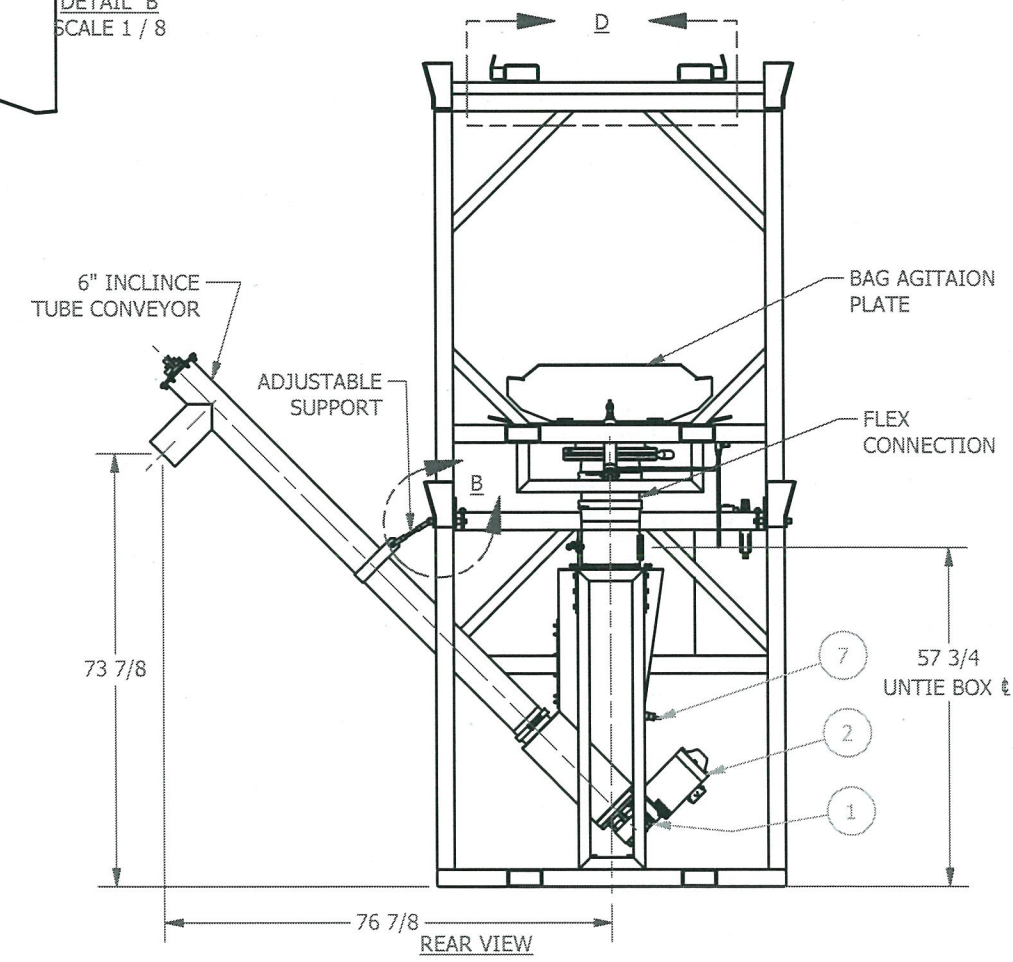
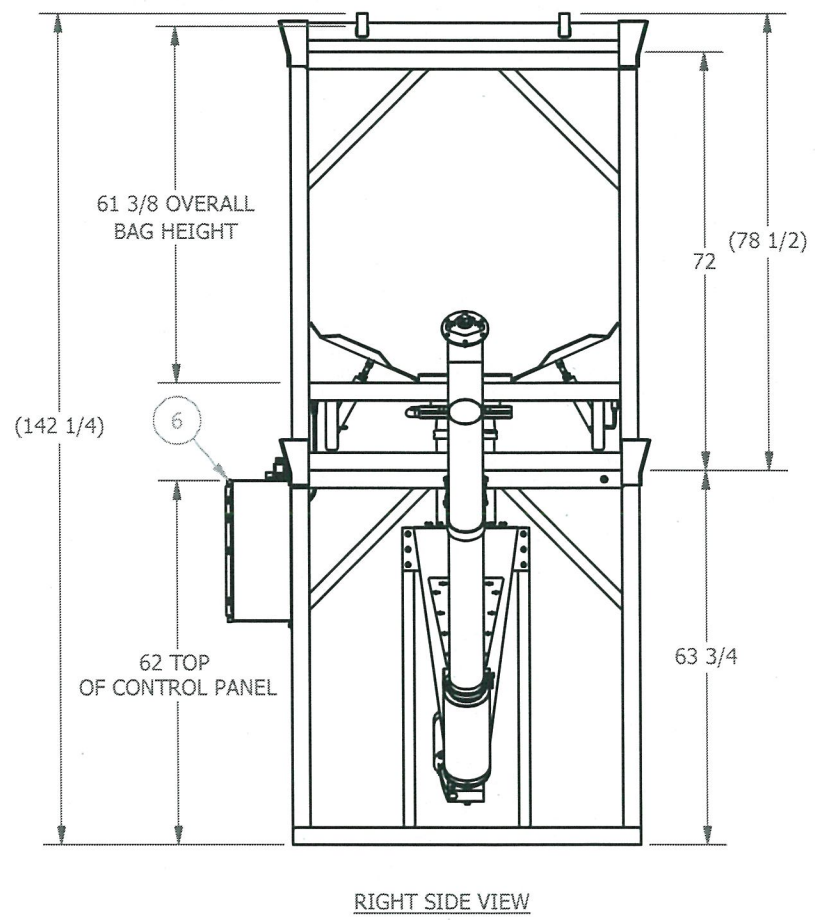
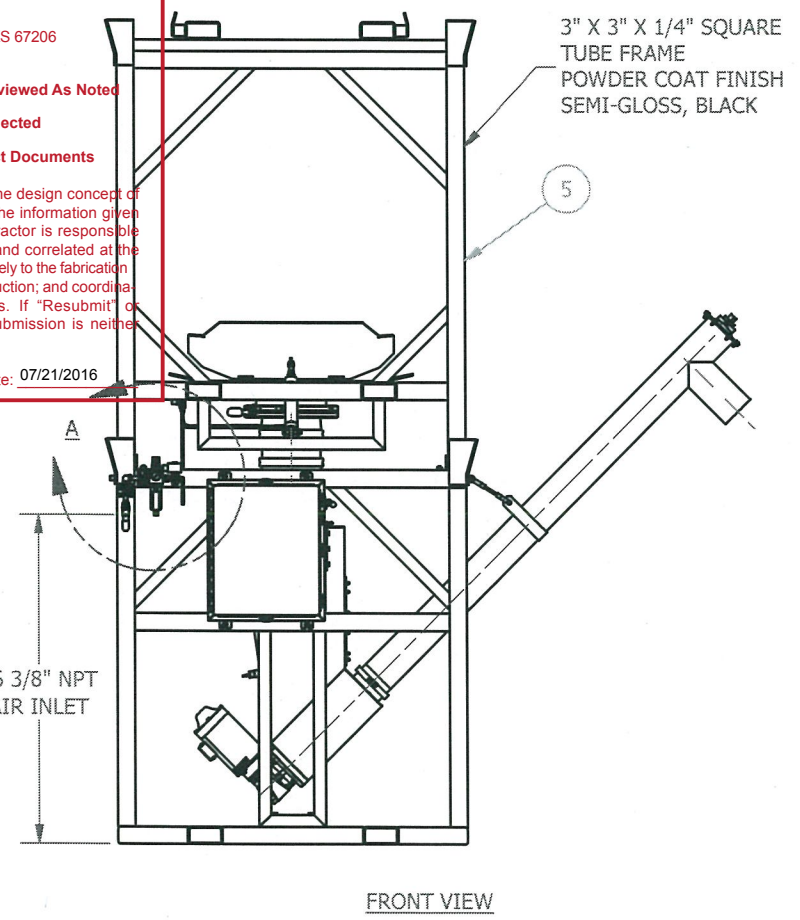


MKEC ENGINEERING, INC.
411 North Webb Road - Wichita, KS 67206

Reviewed Reviewed As Noted
 Revise and Resubmit Rejected
 Not Required by the Contract Documents

Reviewed for conformance with the design concept of the project and compliance with the information given in the contract documents. Contractor is responsible for: dimensions to be confirmed and correlated at the job site; information that pertains solely to the fabrication process or to techniques of construction; and coordination of work of all other trades. If "Resubmit" or "Rejected" are not checked resubmission is neither desired or required.

By: Keith Scarbery Date: 07/21/2016



**** NOTICE ****

THIS DRAWING AND THE INFORMATION HEREIN CONTAINED ARE THE PROPERTY OF IPM SYSTEMS, WHICH HAS FURNISHED THEM IN CONFIDENCE UPON THE UNDERSTANDING AND CONDITION THAT ALL PERSONS, FIRMS OR CORPORATIONS RECEIVING SUCH DRAWING AND INFORMATION SHALL BY THE ACT OF RECEIVING THEM BE DEEMED TO HAVE AGREED: TO MAKE NO COPY, DUPLICATION, DISCLOSURE OR USE WHATSOEVER OF ALL OR ANY PART THEREOF EXCEPT AS EXPRESSLY AUTHORIZED IN WRITING BY IPM SYSTEMS: NOT TO GIVE, LEND OR OTHERWISE DISPOSE OF THIS DRAWING: AND TO RETURN THIS DRAWING PROMPTLY UPON REQUEST.

NO.	REVISION DESCRIPTION	DATE	BY	CK'D
B	CHANGED AUGER DISCHARGE TUBE ANGLE	7/15/18	RCM	
RCM	INITIAL DESIGN	7/1/18	RCM	

4225 NE PORT DR.
LEE'S SUMMIT, MO 64064
PHONE: 816-795-6333 / FAX: 816-795-6030

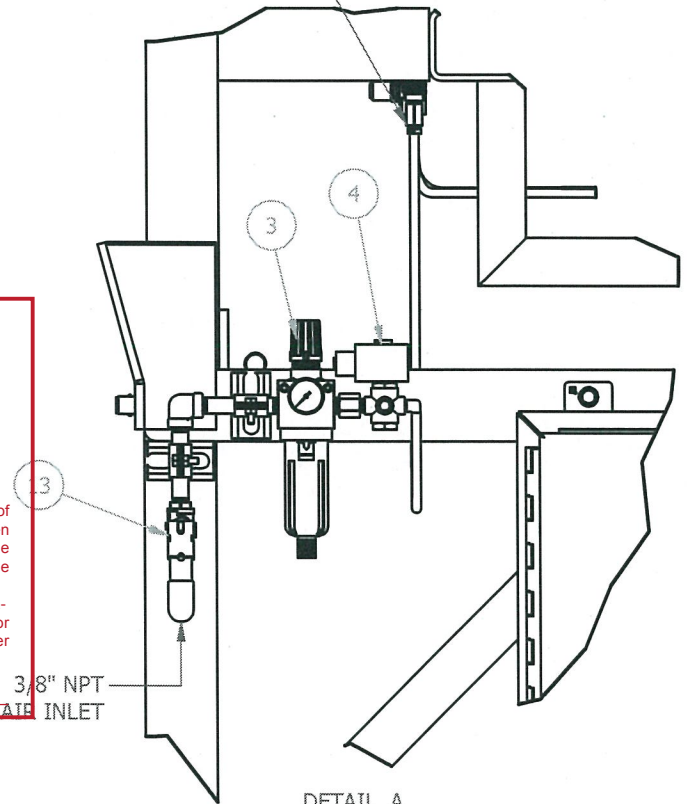
ALL DIMENSIONS ARE IN INCHES UNLESS NOTED OTHERWISE

TOLERANCES:
UNLESS NOTED OTHERWISE
.XX = ± .01
.XXX = ± .005
.XXXX = ± .0005
FRACTIONS = ± 1/16
ANGLES = ± 1°

16037 - CITY OF WICHITA WWTP BULK BAG FEED SYSTEM				
GENERAL ASSEMBLY & DETAIL SHEET 1 OF 2				
DATE:	DRAWN BY:	SCALE:	DRAWING NUMBER	REV
7/1/18	RCM	NTS	531-2000-16037	B

PLANT/INSTRUMENT AIR NOT AVAILABLE
 IS ELECTRIC OPTION AVAILABE? OTHERWISE
 COMPRESSOR SHOULD BE PROVIDED AS A PART
 OF THIS PACKAGE.

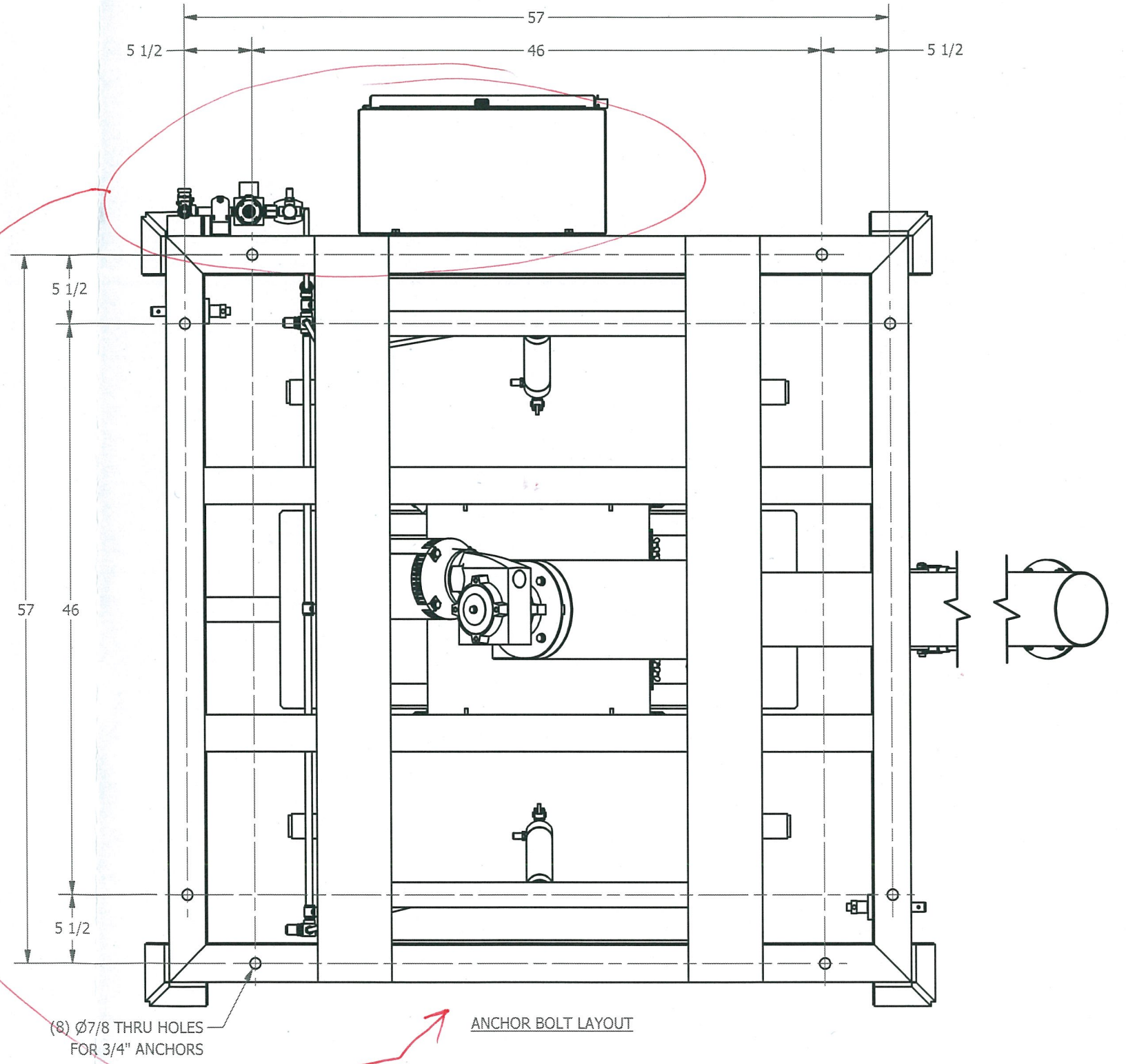
AIR LINE QUICK DISCONNECT TO
 REMOVE UPPER SECTION



3/8" NPT
 AIR INLET

DETAIL A
 SCALE 1/8

MOVE ELECTRICAL
 AND AIR CONTROLS



(8) Ø7/8 THRU HOLES
 FOR 3/4" ANCHORS

ANCHOR BOLT LAYOUT

MKEC ENGINEERING, INC.
 411 North Webb Road - Wichita, KS 67206

Reviewed Reviewed As Noted
 Revise and Resubmit Rejected
 Not Required by the Contract Documents

Reviewed for conformance with the design concept of the project and compliance with the information given in the contract documents. Contractor is responsible for: dimensions to be confirmed and correlated at the job site; information that pertains solely to the fabrication process or to techniques of construction; and coordination of work of all other trades. If "Resubmit" or "Rejected" are not checked resubmission is neither desired or required.

By: Keith Scarbery Date: 07/21/2016

**** NOTICE ****

THIS DRAWING AND THE INFORMATION CONTAINED ARE THE PROPERTY OF IPM SYSTEMS, WHICH HAS FURNISHED THEM IN CONFIDENCE UPON THE UNDERSTANDING AND CONDITION THAT ALL PERSONS, FIRMS OR CORPORATIONS RECEIVING SUCH DRAWING AND INFORMATION SHALL BY THE ACT OF RECEIVING THEM BE DEEMED TO HAVE AGREED: TO MAKE NO COPY, DUPLICATION, DISCLOSURE OR USE WHATSOEVER OF ALL OR ANY PART THEREOF EXCEPT AS EXPRESSLY AUTHORIZED IN WRITING BY IPM SYSTEMS: NOT TO GIVE, LEND OR OTHERWISE DISPOSE OF THIS DRAWING: AND TO RETURN THIS DRAWING PROMPTLY UPON REQUEST.

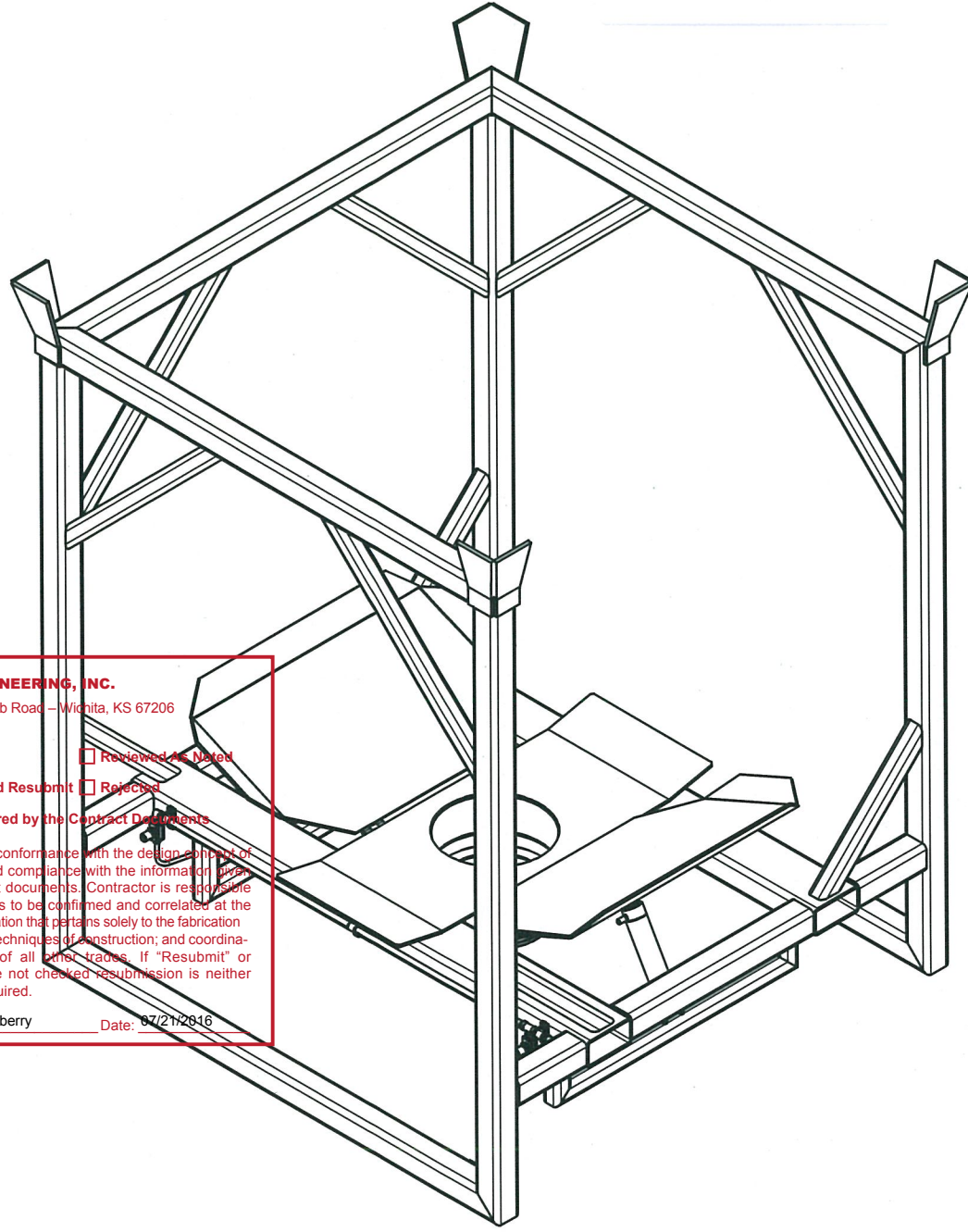
NO.	REVISION DESCRIPTION	DATE	BY	CK'D
B	CHANGED AUGER DISCHARGE TUBE ANGLE	7/15/16	RCM	
A	INITIAL DESIGN	7/1/16	RCM	

4225 NE PORT DR.
 LEE'S SUMMIT, MO 64064
 PHONE: 816-795-6333 / FAX: 816-795-6030

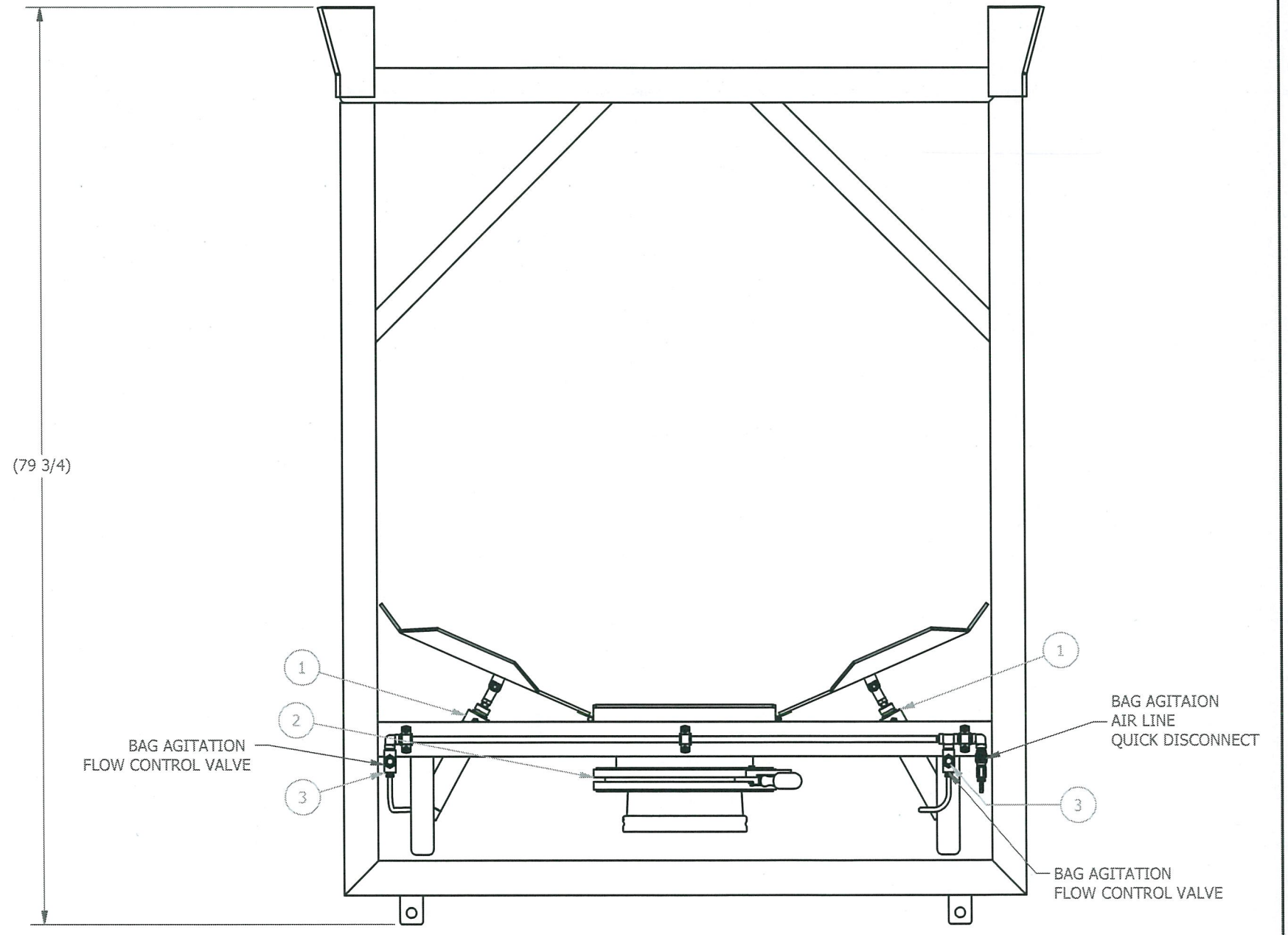
ALL DIMENSIONS ARE IN INCHES UNLESS NOTED OTHERWISE

TOLERANCES:
 UNLESS NOTED OTHERWISE
 .XX = ± .01
 .XXX = ± .005
 .XXXX = ± .0005
 FRACTIONS = ± 1/16
 ANGLES = ± 1°

16037 - CITY OF WICHITA WWTP BULK BAG FEED SYSTEM				
GENERAL ASSEMBLY & DETAIL SHEET 2 OF 2				
DATE:	DRAWN BY:	SCALE:	DRAWING NUMBER	REV
7/1/16	RCM	NTS	531-2000-16037	B



BILL OF MATERIAL				
ITEM	QTY	DESCRIPTION	MANUFACTURER	PART NUMBER
1	2	AIR CYLINDER, 2" BORE, 6" STROKE, WITH PISTON ROD CLEVIS	BIMBA	316-DXP(D-231-3)
2	1	IRIS VALVE, 12", ALUMINUM BODY, 304 S.S. CONTROL RING, URETHANE COATED SINGLE SLEEVE, WITH LOCK HANDLE	SALINA VORTEX	UBB12QL-UR
3	2	NEEDLE VALVE, 1/4", GLASS-REINFORCED POLYESTER BODY, BUNA-N SEALS	MCMaster-CARR	4891K72



LEFT SIDE VIEW

MKEC ENGINEERING, INC.
 411 North Webb Road - Wichita, KS 67206

Reviewed Reviewed As Noted
 Revise and Resubmit Rejected
 Not Required by the Contract Documents

Reviewed for conformance with the design concept of the project and compliance with the information given in the contract documents. Contractor is responsible for: dimensions to be confirmed and correlated at the job site; information that pertains solely to the fabrication process or to techniques of construction; and coordination of work of all other trades. If "Resubmit" or "Rejected" are not checked resubmission is neither desired or required.

By: Keith Scarberry Date: 07/21/2016

**** NOTICE ****

THIS DRAWING AND THE INFORMATION HEREIN CONTAINED ARE THE PROPERTY OF IPM SYSTEMS, WHICH HAS FURNISHED THEM IN CONFIDENCE UPON THE UNDERSTANDING AND CONDITION THAT ALL PERSONS, FIRMS OR CORPORATIONS RECEIVING SUCH DRAWING AND INFORMATION SHALL BY THE ACT OF RECEIVING THEM BE DEEMED TO HAVE AGREED: TO MAKE NO COPY, DUPLICATION, DISCLOSURE OR USE WHATSOEVER OF ALL OR ANY PART THEREOF EXCEPT AS EXPRESSLY AUTHORIZED IN WRITING BY IPM SYSTEMS: NOT TO GIVE, LEND OR OTHERWISE DISPOSE OF THIS DRAWING: AND TO RETURN THIS DRAWING PROMPTLY UPON REQUEST.

NO.	REVISION DESCRIPTION	DATE	BY	CK'D
A	INITIAL DESIGN	7/1/16	RCM	

4225 NE PORT DR.
 LEE'S SUMMIT, MO 64064
 PHONE: 816-795-6333 / FAX: 816-795-6030

ALL DIMENSIONS ARE IN INCHES UNLESS NOTED OTHERWISE

TOLERANCES:
 UNLESS NOTED OTHERWISE
 .XX = ± .01
 .XXY = ± .005
 .XXX = ± .0005
 FRACTIONS = ± 1/16
 ANGLES = ± 1°

16037 - CITY OF WICHITA WWTP BULK BAG FEED SYSTEM				
UPPER SECTION ASSEMBLY SHEET 1 OF 1				
DATE:	DRAWN BY:	SCALE:	DRAWING NUMBER	REV
7/1/16	RCM	NTS	531-2001-16037	A