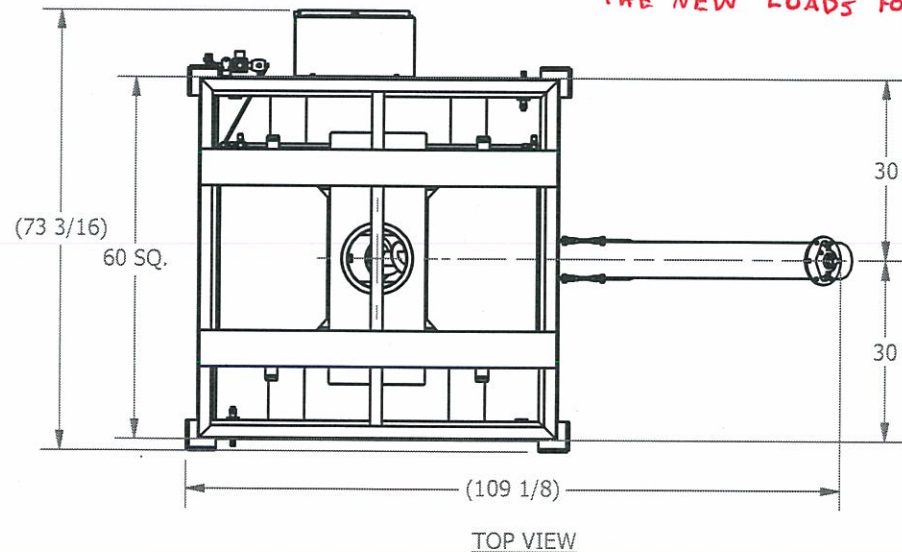
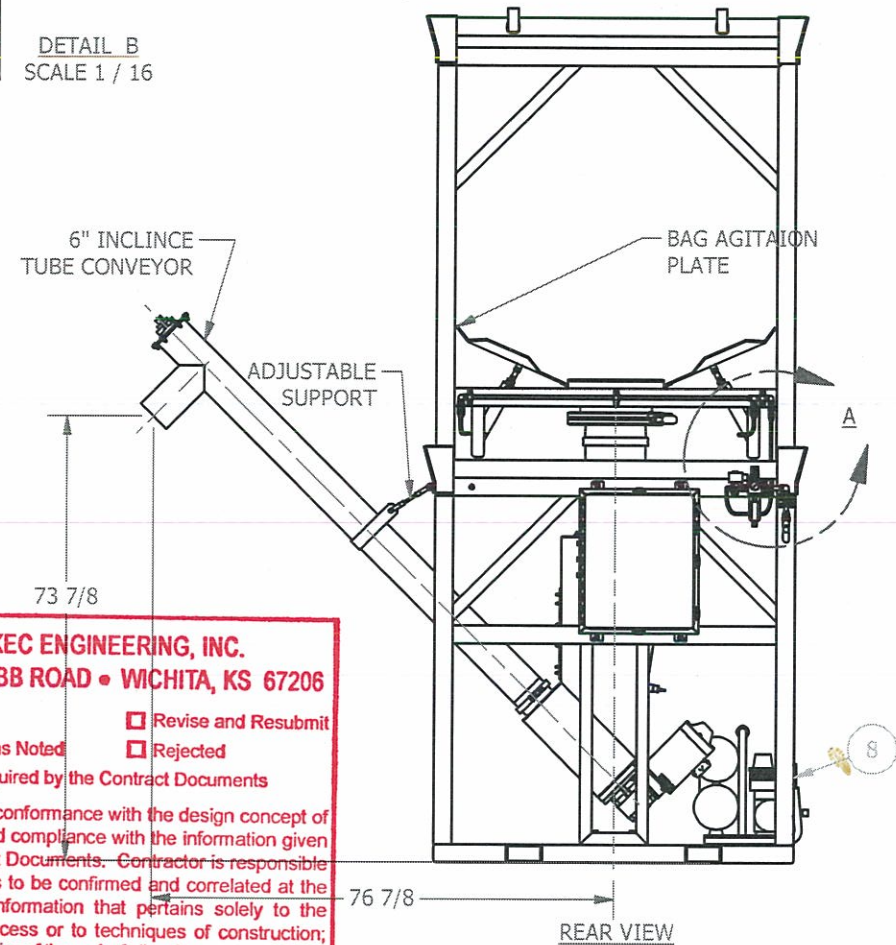
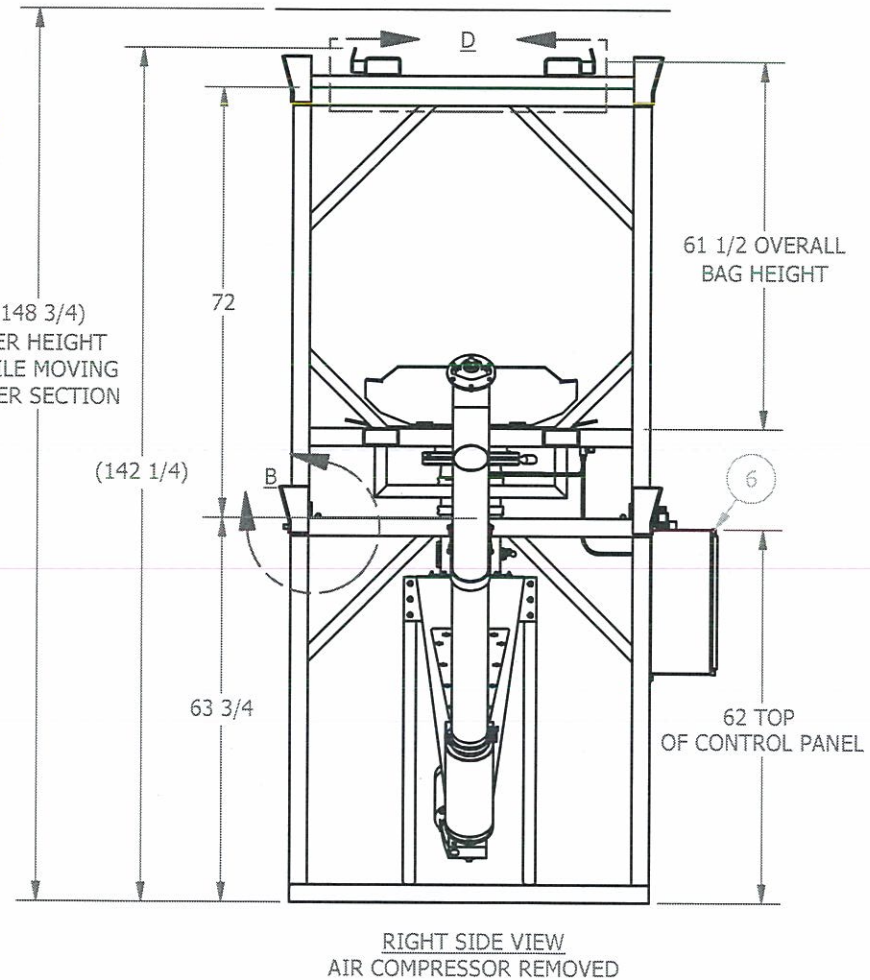
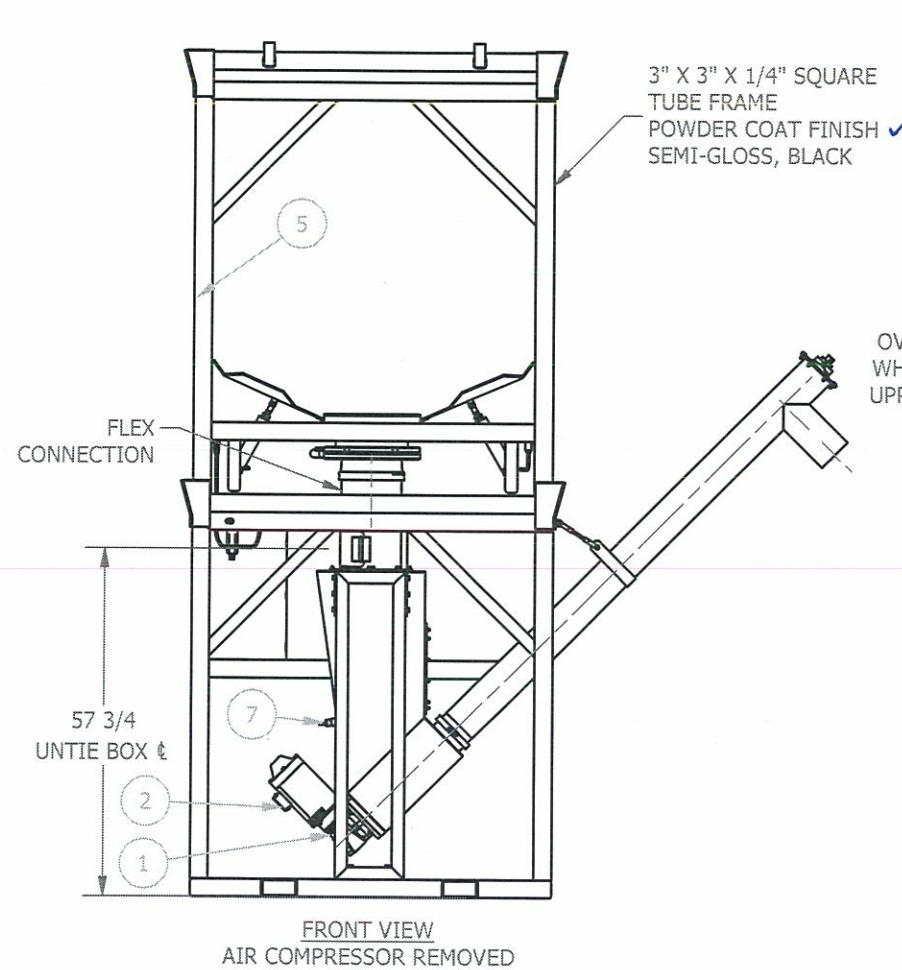
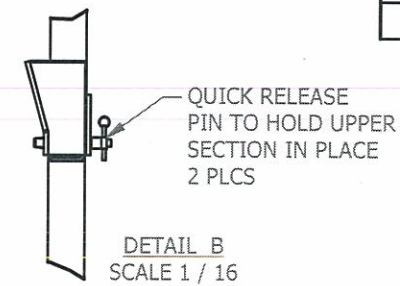
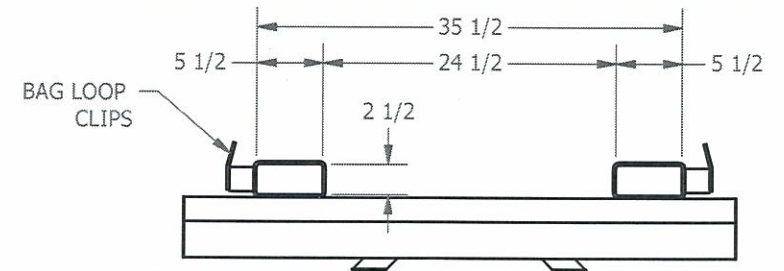


How is the AIR COMPRESSOR POWERED?
FROM CONTROL PANEL? WHAT ARE
THE NEW LOADS FOR POWER?



BILL OF MATERIAL				
ITEM	QTY	DESCRIPTION	MANUFACTURER	PART NUMBER
1	1	NORD GEAR REDUCER, SK15M163AF, WORM, 10:1 RATIO, 140TC, 1.1875 IN SS KEYS HOLLOW SHAFT, NSD-X3 PAINT	IPM	018-0101-1010
2	1	MOTOR, 1 1/2 HP, 230/460 VAC, 60 HZ, 3 PH, 1800 RPM, TYPE UNTX	US MOTORS	UN32T2BC
3	1	PARTICULATE FILTER/REGULATOR, 3/8", WITH GAUGE	PNEUMATICS	P22B-03G
4	1	SOLENOID VALVE, 3 WAY, 1/4", 120VAC, STAINLESS STEEL, WITH DIN CONNECTOR	ASCO	SC8320G200
5	1	UPPER FRAME ASSEMBLY	IPM	531-2001-16037
6	1	CONTROL PANEL	IPM	050-2300-0005
7	1	CAPACITIVE LEVEL SWITCH	IFM	KI0206
8	1	AIR COMPRESSOR, 4 GAL., 3.2 CFM @ 135 PSI, 2 HP, 120/1/60 VAC	INGERSOLL RAND	P1IU-A9

- NOTES:
1. IMP SHALL COMPLETELY ASSEMBLE AND FACTORY TEST THE SYSTEM PRIOR TO SHIPMENT.
 2. THE SYSTEM WILL SHIP IN 5 SEPERATE PIECES (LOWER FRAME ASSEMBLY, UPPER FRAME ASSEMBLY, BAG LIFT ASSEMBLY, AUGER TUBE AND AUGER). CONTRACTOR TO RE-ASSEMBLE SYSTEM ONCE ON SITE.
 3. ANCHOR BOLTS SHALL BE PROVIDED BY OTHERS.
 4. TO REMOVE UPPER SECTION. DISCONNECT AIR LINE (DETAIL A), REMOVE QUICK RELEASE PINS (DETAIL B), DISCONNECT FLEX CONNECTION FROM UPPER SECTION SIDE.
 5. FORK TRUCK FROM LEFT SIDE.



MKEC ENGINEERING, INC.
411 N. WEBB ROAD • WICHITA, KS 67206

Reviewed Revise and Resubmit
 Reviewed as Noted Rejected
 Not Required by the Contract Documents

Reviewed for conformance with the design concept of the Project and compliance with the information given in the Contract Documents. Contractor is responsible for dimensions to be confirmed and correlated at the job site; for information that pertains solely to the fabrication process or to techniques of construction; and for coordination of the work of all trades.

DATE: 7/29/16

**** NOTICE ****
THIS DRAWING AND THE INFORMATION HEREIN CONTAINED ARE THE PROPERTY OF IPM SYSTEMS, WHICH HAS FURNISHED THEM IN CONFIDENCE UPON THE UNDERSTANDING AND CONDITION THAT ALL PERSONS, FIRMS OR CORPORATIONS RECEIVING SUCH DRAWING AND INFORMATION SHALL BY THE ACT OF RECEIVING THEM BE DEEMED TO HAVE AGREED: TO MAKE NO COPY, DUPLICATION, DISCLOSURE OR USE WHATSOEVER OF ALL OR ANY PART THEREOF EXCEPT AS EXPRESSLY AUTHORIZED IN WRITING BY IPM SYSTEMS; NOT TO GIVE, LEND OR OTHERWISE DISPOSE OF THIS DRAWING; AND TO RETURN THIS DRAWING PROMPTLY UPON REQUEST.

NO.	REVISION DESCRIPTION	DATE	BY	CHK'D
C	REVISED PER SUBMITTAL COMMENTS	7/25/16	RCM	
B	CHANGED AUGER DISCHARGE TUBE ANGLE	7/15/16	RCM	
RCM	INITIAL DESIGN	7/1/16	RCM	

IPM SYSTEMS

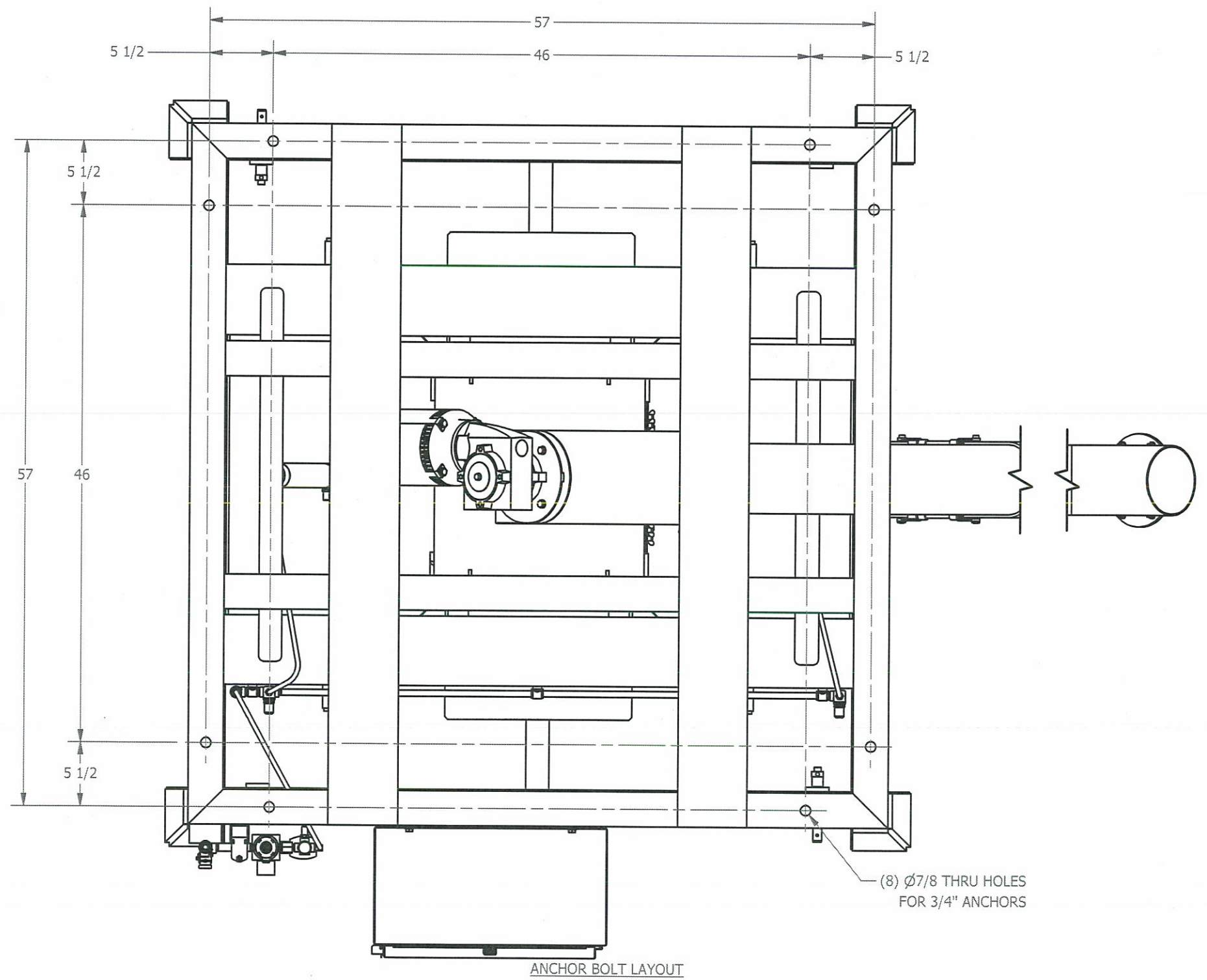
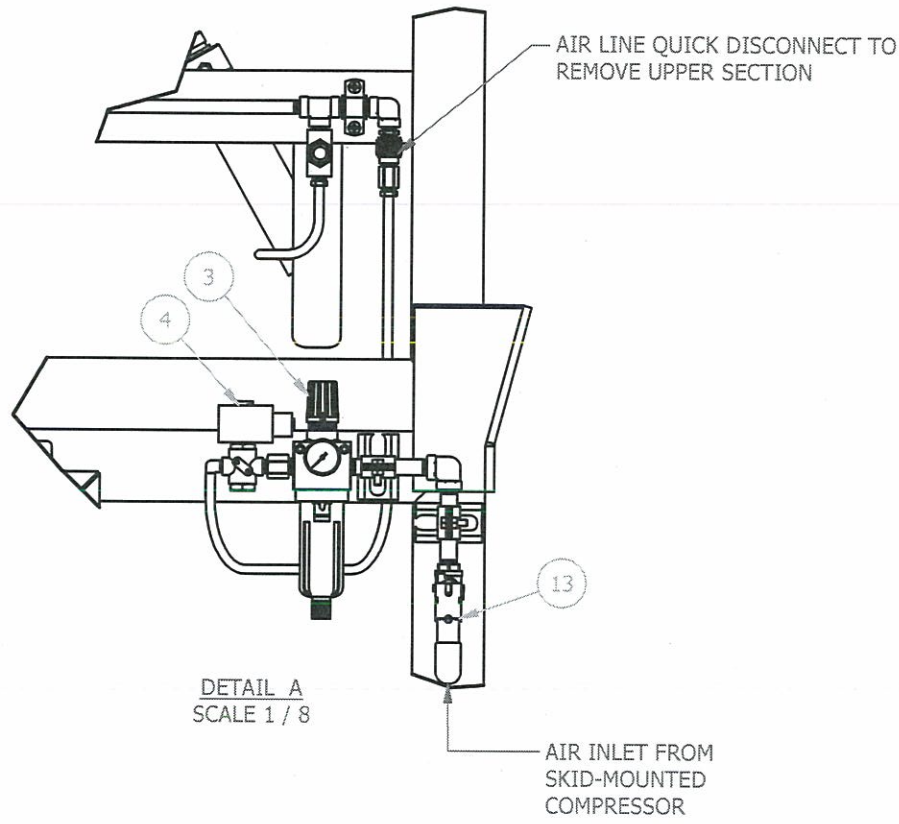
4225 NE PORT DR.
LEE'S SUMMIT, MO 64064
PHONE: 816-795-6333 / FAX: 816-795-6030

TOLEANCES:
UNLESS NOTED OTHERWISE
.XX = ± .01
.XXX = ± .005
.XXXX = ± .0005
FRACTIONS = ± 1/16
ANGLES = ± 1°

16037 - CITY OF WICHITA WWTP
BULK BAG FEED SYSTEM

GENERAL ASSEMBLY & DETAIL
SHEET 1 OF 2

DATE:	DRAWN BY:	SCALE:	DRAWING NUMBER	REV
7/1/16	RCM	NTS	531-2000-16037	C



ANCHOR BOLT LAYOUT

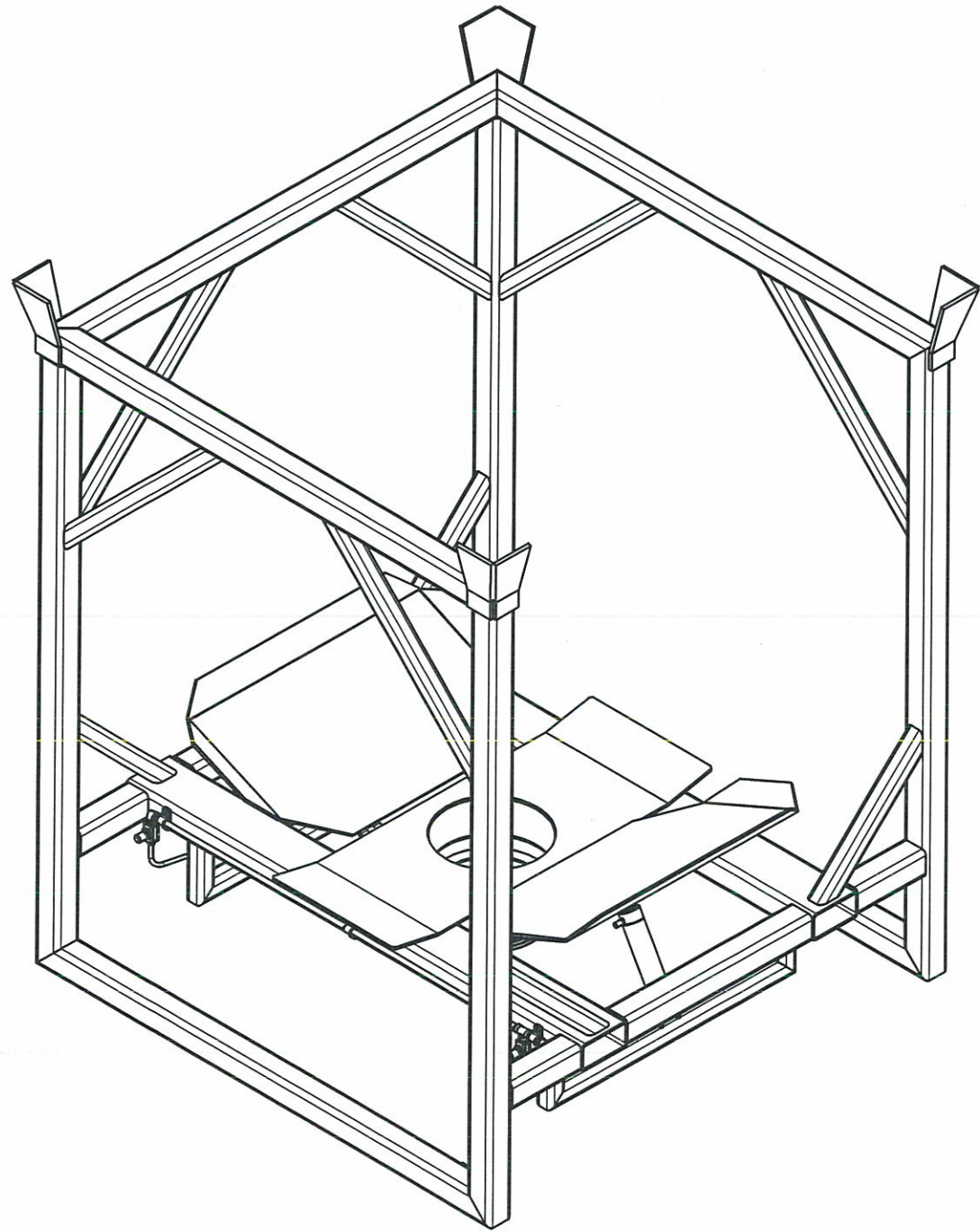
**** NOTICE ****
 THIS DRAWING AND THE INFORMATION HEREIN CONTAINED ARE THE PROPERTY OF IPM SYSTEMS, WHICH HAS FURNISHED THEM IN CONFIDENCE UPON THE UNDERSTANDING AND CONDITION THAT ALL PERSONS, FIRMS OR CORPORATIONS RECEIVING SUCH DRAWING AND INFORMATION SHALL BY THE ACT OF RECEIVING THEM BE DEEMED TO HAVE AGREED: TO MAKE NO COPY, DUPLICATION, DISCLOSURE OR USE WHATSOEVER OF ALL OR ANY PART THEREOF EXCEPT AS EXPRESSLY AUTHORIZED IN WRITING BY IPM SYSTEMS; NOT TO GIVE, LEND OR OTHERWISE DISPOSE OF THIS DRAWING; AND TO RETURN THIS DRAWING PROMPTLY UPON REQUEST.

NO.	REVISION DESCRIPTION	DATE	BY	CK'D
C	REVISED PER SUBMITTAL COMMENTS	7/25/16	RCM	
B	CHANGED AUGER DISCHARGE TUBE ANGLE	7/15/16	RCM	
A	INITIAL DESIGN	7/1/16	RCM	

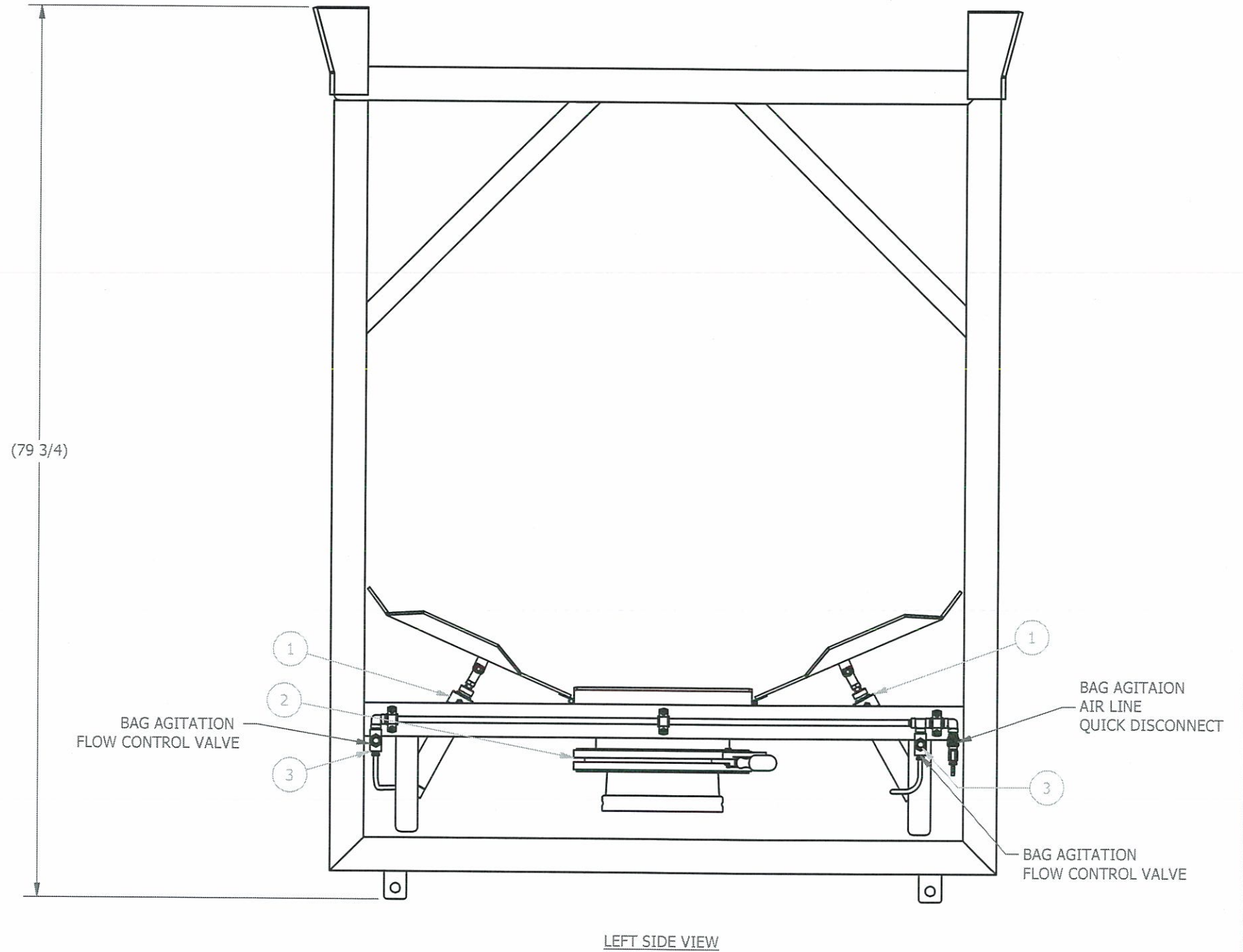
IPM SYSTEMS
 4225 NE PORT DR.
 LEE'S SUMMIT, MO 64064
 PHONE: 816-795-6333 / FAX: 816-795-6030

ALL DIMENSIONS ARE IN INCHES UNLESS NOTED OTHERWISE
 TOLERANCES:
 UNLESS NOTED OTHERWISE
 .XX = ± .01
 .XXX = ± .005
 .XXXX = ± .0005
 FRACTIONS = ± 1/16
 ANGLES = ± 1°

16037 - CITY OF WICHITA WWTP BULK BAG FEED SYSTEM				
GENERAL ASSEMBLY & DETAIL SHEET 2 OF 2				
DATE:	DRAWN BY:	SCALE:	DRAWING NUMBER	REV
7/1/16	RCM	NTS	531-2000-16037	C



BILL OF MATERIAL				
ITEM	QTY	DESCRIPTION	MANUFACTURER	PART NUMBER
1	2	AIR CYLINDER, 2" BORE, 6" STROKE, WITH PISTON ROD CLEVIS	BIMBA	316-DXP(D-231-3)
2	1	IRIS VALVE, 12", ALUMINUM BODY, 304 S.S. CONTROL RING, URETHANE COATED SINGLE SLEEVE, WITH LOCK HANDLE	SALINA VORTEX	UBB12QL-UR
3	2	NEEDLE VALVE, 1/4", GLASS-REINFORCED POLYESTER BODY, BUNA-N SEALS	MCMaster-CARR	4891K72



**** NOTICE ****
 THIS DRAWING AND THE INFORMATION HEREIN CONTAINED ARE THE PROPERTY OF IPM SYSTEMS, WHICH HAS FURNISHED THEM IN CONFIDENCE UPON THE UNDERSTANDING AND CONDITION THAT ALL PERSONS, FIRMS OR CORPORATIONS RECEIVING SUCH DRAWING AND INFORMATION SHALL BY THE ACT OF RECEIVING THEM BE DEEMED TO HAVE AGREED: TO MAKE NO COPY, DUPLICATION, DISCLOSURE OR USE WHATSOEVER OF ALL OR ANY PART THEREOF EXCEPT AS EXPRESSLY AUTHORIZED IN WRITING BY IPM SYSTEMS; NOT TO GIVE, LEND OR OTHERWISE DISPOSE OF THIS DRAWING; AND TO RETURN THIS DRAWING PROMPTLY UPON REQUEST.

No.	REVISION DESCRIPTION	DATE	BY	CK'D
A	INITIAL DESIGN	7/1/16	RCM	

IPM SYSTEMS
 4225 NE PORT DR.
 LEE'S SUMMIT, MO 64064
 PHONE: 816-795-6333 / FAX: 816-795-6030

ALL DIMENSIONS ARE IN INCHES UNLESS NOTED OTHERWISE
 TOLERANCES:
 UNLESS NOTED OTHERWISE
 .XX = ± .01
 .XXX = ± .005
 .XXXX = ± .0005
 FRACTIONS = ± 1/16
 ANGLES = ± 1°

16037 - CITY OF WICHITA WWTP BULK BAG FEED SYSTEM				
UPPER SECTION ASSEMBLY SHEET 1 OF 1				
DATE:	DRAWN BY:	SCALE:	DRAWING NUMBER	REV
7/1/16	RCM	NTS	531-2001-16037	A