

WEST LAT. OF A - HARRY TO ZIMMERLY - S.S. #1 - 1889

Plat 9-58

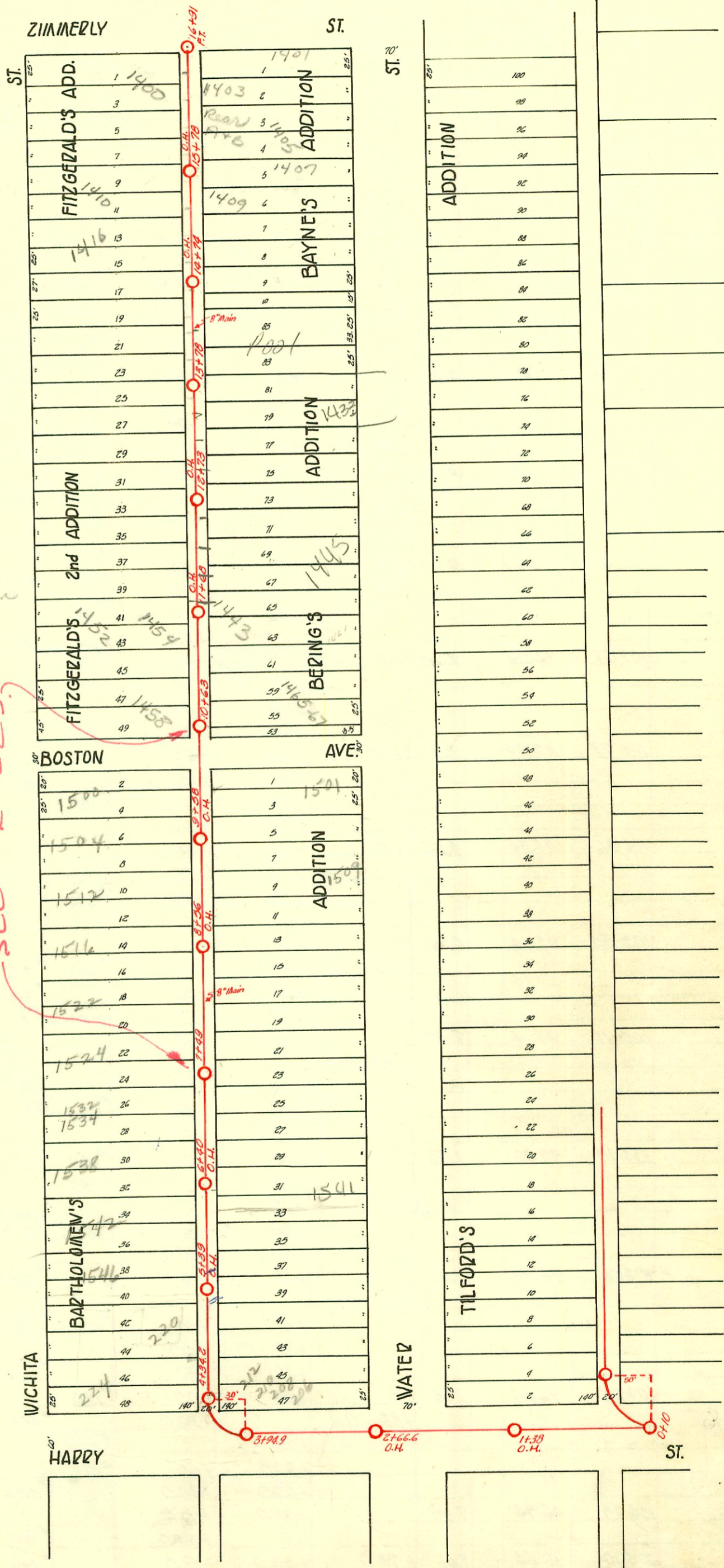
TRAP AREA

1691
1692
1693

1691
1692
523

1691
1692

1691
1692
1693



Recon - 8-21-87 - Daulinger
 # 18920 1500 S. Wichita
 " 21 1504 " "
 " 22 1512 " "
 " 23 1516 " "
 " 24 1522 " "
 " 25 1524 " "
 " 26 1533 S. Water
 " 27 1527 " "
 " 28 1525 " "
 " 29 1509 " "
 " 30 1503 " "
 " 31 1501 " "

RECONSTRUCTED
SEE K-225

92-30142-7 9/21/42 1541 S. Water - Harry - (7130.0 tap, 4" Sch 40 PVC)
 2004-00144-1/15/00 - 1445 S Water - sp 18.5' sym @ 18' + 8' from main - Bowers Plumbing
 Wye 193 N. of M.H.; 14" C.D.; 14" trap

CONSTRUCTION RECORD

SERVICE RECORD

STATION	ELEVATION		Depth	MANHOLE	4-INCH "Y" BRANCHES		No. of Permit		House Number		DATE OF PERMITS	
	Ground	Grade			North West	South East	North West	South East	North West	South East	North West	South East
				+91								
					+66	+68	# 415		1402 S. Wichita		9-11-12	
					+41	+43						
16	106.05	102.30	3.75		+16	+18	# 464	# 112	1406 S. Wichita		5-24-11	3-7-11
				+78 O.H.	+91	+93		# 111	1401 S. Water			3-2-14
					+66	+68	# 434		1410 S. Wichita			
15	106.23	101.90	4.33		+41	+43		# 89	1415 S. Water	10-19-36	3-22-16	
				+74 O.H.	+91	+93		# 801	1415 S. Water	7-8-22		
					+66	+68	# 1021	# 219	1420 S. Water	1423 S. Water	5-5-24	4-13-10
					+41	+43						
					+27	+29	# 350		1422 S. Wichita	1427 S. Water	6-16-10	
14	106.54	101.50	5.04		+02	+04		# 310				7-25-16
				+78.0	+71	+73	# 341	# 220	1420 S. Wichita	1435 S. Water	6-13-10	4-23-09
					+52	+54						
					+27	+29	# 48				2-9-11	
13	106.21	101.10	5.11		+02	+04		# 104				3-18-14
				+73 O.H.	+77	+79		# 307		1435 S. Water		5-25-10
					+52	+54	# 238	# 154	1432 S. Water		4-24-17	4-26-17
					+27	+29	# 380	# 147		1443 S. Water	4-24-11	7-7-08
12	105.24	100.70	4.54		+02	+04						
				+68 O.H.	+77	+79	# 1473	# 686	1438 S. Water	1443 S. Water	6-24-24	12-14-10
					+62		# 6497		224 W. Harry		11-20-51	
					+52	+54						
					+27	+29	# 5353	# 99		1461 S. Water		11-19-75
11	105.45	100.30	5.15		+02	+04						3-3-10
				+63	+77	+79	# 100		1460 S. Wichita		3-3-10	
					+52	+54		# 244		1467 S. Water		10-28-08
					+27	+29						
10	104.97	99.90	5.07		+02	+04				1501 S. Water		1-22-10
				+58 O.H.	+77	+79						
					+52	+54	# 458		1504 S. Wichita		2-1-10	
					+27	+29	# 112		1508 S. Wichita		3-7-10	
9	105.37	99.50	5.87		+02	+04				1509 S. Water		1-3-23
				+56 O.H.	+77	+79						
					+52	+54	# 139	# 161	1514 S. Wichita	1525 S. Water	3-17-10	3-22-10
					+27	+29						
8	105.20	99.10	6.10		+02	+04	# 1836	# 523	1532 S. Wichita		3-22-08	10-26-15
					+77	+79	# 755		1520 S. Wichita		12-9-41	
				+49	+52	+54	# 399	# 182		214 S. Water	4-29-11	8-16-06
					+27	+29						
7	104.83	98.70	6.13		+02	+04						
					+77	+79						
				+40 O.H.	+52	+54	# 270		1532 S. Wichita		2-24-23	9-21-04
					+27	+29						
6	105.07	98.30	6.77		+02	+04	# 1471	# 657	1542 S. Wichita	1535 S. Water	11-3-22	11-28-10
					+77	+79						
				+39 O.H.	+52	+54						
					+27	+29	# 1342		1546 S. Wichita		10-12-22	
5	104.71	97.90	6.81		+02	+04						
					+77	+79						
					+52	+54	# 1225	# 75	224 W. Harry	1555 S. Water	1-17-69	3-4-09
					+27	+29						
4				P.T. +34.2	+27	+29						3-20-23
3	104.87	97.39	6.48	P.O. +94.9								11-25-69
2	104.62	97.29	6.33	+77 O.H.								12-22-25
1	104.23	97.19	7.04	+38 O.H.								1-14-70
0	103.94	97.09	6.85	+10								1-9-22-06

Wichita Water

2022 - Used old connection - 1557 S. Water - 8-5-07 - Pray Bros
 # 1 - Tap - 224 W. Harry - 10-19-49 - Frederick Pkg. Co.
 # 2 - 1443 S. Water - 7-12-52 - McDonald Pkg. Co.
 # 3132 - 6-8 Nye - 1522 S. Wichita - 1-12-55 - Frederick
 # 63 - Tap - 1416 S. Wichita - 3-6-50 - Nelson Pkg. Co. (15+26)
 # 4370 - Private Line - Trailer - 4-21-55 - Bradie
 # 4371 - Private Line - Trailer - 4-21-55 - Bradie
 # C12200 - 220 W. Harry - Kirland - Huddleston 1-15-69 (priv. line conn.)
 # 16286 tap - 1405 S. Water (near) 3rd Pkg. 10-24-62 (16+25)
 # C12253 - Sidoff - 224 W. Harry - Kirland - Huddleston 1-17-69 (priv. line) (5+07.2)
 # 0 - # 270558 - (1559 S. Wichita) - 3-27-79 - Kins (4775.2)