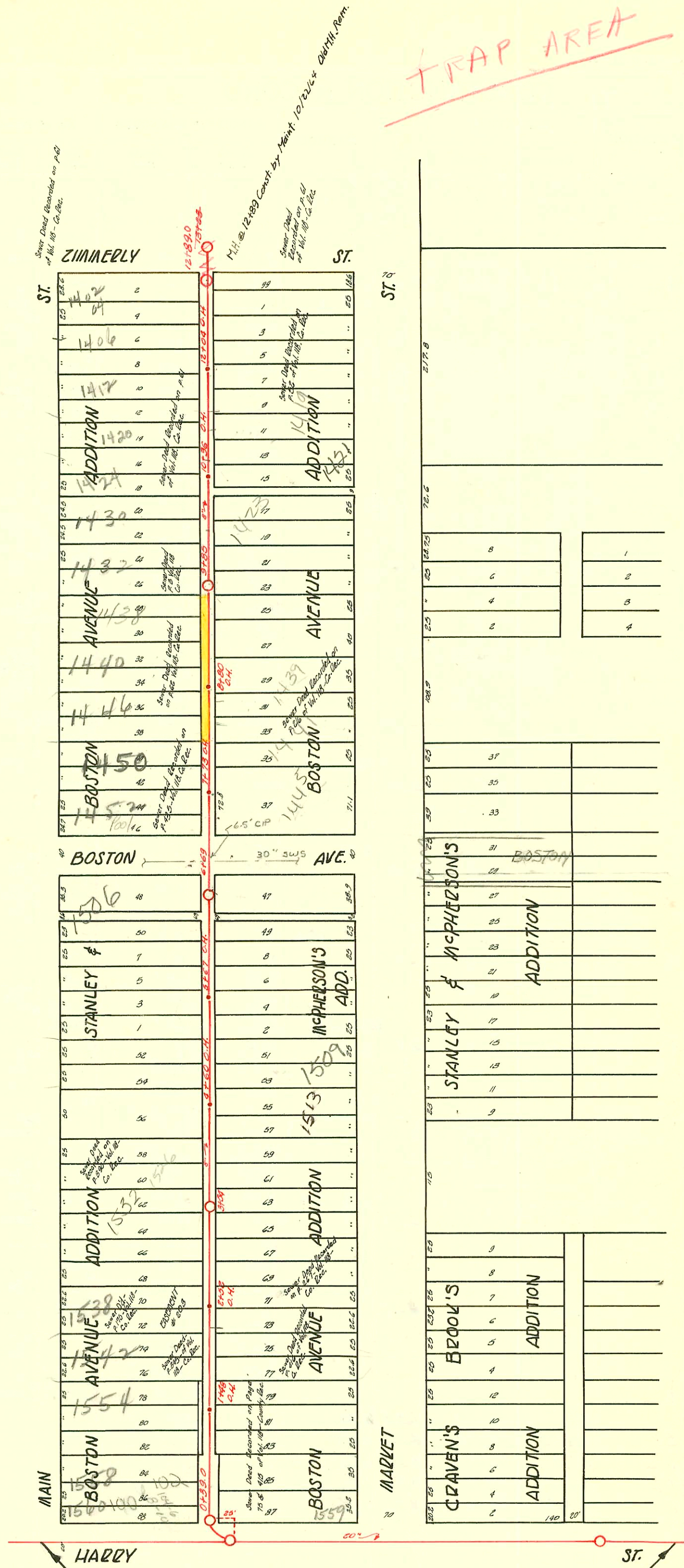


EAST LAT. OF A - HARRY TO ZIMMERLY
S.S. #1 - 1889

Plot 9-58

EASEMENT #56:
On tract of land 150' X 150' what is now
Lots 28, 30, 32, 34, 36 & 38

TRAP AREA A 7



20" s.s. abandoned
See blk. L-24 For relocation

96-8755-7 6-11-96 1532 Rev
4" sch 40 Rickett on N side of Bldg (opp 20' of clay left under tree)
2-C.O. 1-TRAP-city use repair

CONSTRUCTION RECORD

SERVICE RECORD

STATION	ELEVATION		Depth	MANHOLE	4-INCH "Y" BRANCHES		No. of Permit		House Number		DATE OF PERMITS	
	Ground	Grade			North West	South East	North West	South East	North West	South East	North West	South East
				12+89.0								
					+15.8	+13.8		# 1039	1403 S MARKET			8-18-22
					+89.2	+87.2			117 E 2nd Street			8-18-22
					+65.7	+63.7		# 1038				
					+39.5	+37.5		# 1556	107 E. 2nd Street			10-20-23
18	106.17	101.55	4.62	+04 O.H.	+15.8	+13.8		# 1257	1406 S. MAIN	1407 S. MARKET		10-3-19 10-17-21
					+89	+87						
					+65	+63		# 1571	1408 S. MAIN			10-25-23
					+40.9	+38.9						
11	106.78	101.15	5.63		+13.6	+11.6						
				10+96 O.H.								
					+88.7	+86.7		# 345	1424 S. MAIN	1421 S. MARKET	see below	5-21-16
					+64.5	+62.5		# 663	1432 S. MAIN			10-26-09
					+40.4	+38.4		# 226		1423 S. MARKET		3-29-11
10	106.55	100.75	5.80		+14.3	+12.3						
				9+85	+92.2	+90.2		# 343	1436 S. MAIN			1-22-09
					+64.6	+62.6		# 96		1425 S. MARKET		5-16-08
					+40.3	+38.3		# 279	1438 S. MAIN			6-10-15
9	107.48	100.35	7.13		+09.2	+07.2						
				8+80 O.H.	+90	+88		# 375				8-3-15
					+65.9	+63.9		# 507	1439 S. MARKET			6-17-20
					+39.6	+37.6		# 639	1446 S. MAIN	1441 S. MARKET		11-19-10
8	106.46	99.95	6.51		+15.7	+13.7		# 2003	1450 S. R			11-5-03
				7+73 O.H.	+89.2	+87.2		# 543	1447 S. MAIN	1445 S. MARKET		5-22-22
					+65	+63		# 1354	1452 S. MAIN			10-13-22
					+39.1	+37.1		# 4378	1456 S. MAIN			4-16-51
7	106.86	99.55	7.31		+15.6	+13.6						
				6+69	+88.4	+86.4						
					+63.8	+61.8		# 745				5-17-23
					+39.1	+37.1		# 30	1506 S. MAIN			3-1-35
6	105.71	99.15	6.56		+15	+13		# 382	1503 S. MARKET			3-22-54
				6+67 O.H.	+89	+87		# 585	1506 S. R MAIN	see below		2-26-01
					+65.4	+63.4						10-23-10
					+41.5	+39.5						6-5-11
5	105.40	98.75	6.65		+15.3	+13.3		# 234		1523 S. MARKET		11-27-07
					+91	+89		# 131	1512 S. MAIN			2-17-59
				4+60 O.H.	+65.5	+63.5		# 413	1516 S. MAIN	1521 S. MARKET		3-22-21
					+41.3	+39.3		# 526	1509 S. MARKET			9-2-14
4	104.96	98.35	6.61		+15.3	+13.3		# 206	1523 S. MARKET			3-30-22
					+91.4	+89.4		# 96	1523 S. MAIN	1515 S. MARKET		1-4-11
				3+54	+65.5	+63.5		# 263	1533 S. MAIN			4-3-22
					+39.8	+37.8		# 1054	1517 S. MARKET			8-21-22
3	104.96	97.95	6.97		+15.5	+13.5		# 214	1534 S. MAIN	1517 S. MARKET		3-25-21
					+90	+88		# 38	1512 S. MAIN			1-30-91
				2+52 O.H.	+66	+64		# 1273		1521 S. MARKET		3-15-06
					+37	+35		# 837	1538 S. MAIN	1551 S. MARKET		10-8-19
2	105.40	97.55	7.85		+15.2	+13.2		# 440	1543 S. MAIN			4-14-19
					+91	+89						9-14-15
				1+48 O.H.	+73.6	+71.6		# 599	1553 S. MARKET			5-10-24
					+45.3	+43.3		# 60	1544 S. MAIN	1555 S. MARKET		10-9-18
1	104.42	97.15	7.27		+21	+19						2-1-22
					+99	+97						3-6-15
					+71.5	+69.5		# 1574	104 E. HARRY	120 E. HARRY		10-13-22
0	104.39	96.91	7.48	+39	+47.3	+45.3		# 558	1560 S. MAIN			4-9-23
												5-25-22

2001-00409-2/2601-1506 S. Main - Boardman - 4" SCH40 CO ONLY - ITWIN CO, 1 Fernco to CI@house, 1 Fernco to clay
 2001-01246-5/2601-1421 S. Market - 4" SCH40 City Wye Repair 103' Not MH 9185 (10+88) Predco - trap installed, ITWIN CO, 2V22, 1V45

R# 9893 1526 S. Main (shallow) 11-3-83

1551 S. Market
 B1697 - 7-24-64 - Seal on Samell Williams - House Trailer ?
 20190 - 1443 S. Market S. 6-3-1-88 - Al H. (see permit)

107 - Top - 118 E. Harry - 9-15-25
 # 231 - Top - 1556 S. Main - 6-25-26
 # 2523 - Top - 1404 S. Main - 8-5-40 - H. Diggs
 # 718 - Top - 1527 S. Market - 6-25-50 - Fredrick Pkg. Co.
 # 666 - Top - 1419 S. Market - 30-51 - H. Shepard
 # 2568 - Private Line - 1419 S. Market - 11-30-51 - H. Shepard
 # 2566 - 6 on 8 - 1437 S. Market - 11-15-54 - S. & B. Pkg.
 # 3770 - 3771 - Trailer - Private Line - 1406 S. Main - Roy
 # 5724 - 6 on 8 Wye - 118 E. Harry - Cherry Pkg. - 7-25-55
 # 134015 - Leaff - 1959 S. Mkt. - see below (Mintline 8-25-65 all line)
 (Reconnected across line at 36+00) in Harry Street.
 (see Ch. 24 for lower leaf - 1559 S. Mkt.)
 # B5494 - Wadsworth - Fernin Harry St.)