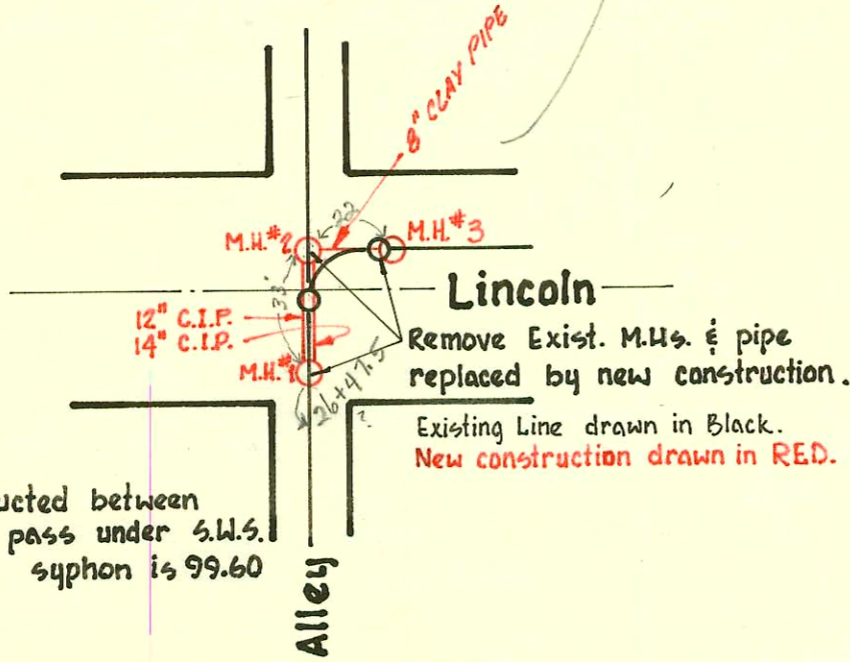


Plat 9-58

MAIN A - ZIMMERLY TO LINCOLN  
S.S. #1-1889



NOTE:  
Syphon constructed between  
M.Hs. #1 & 2 to pass under S.W.S.  
Flo of S.W.S. at syphon is 99.60

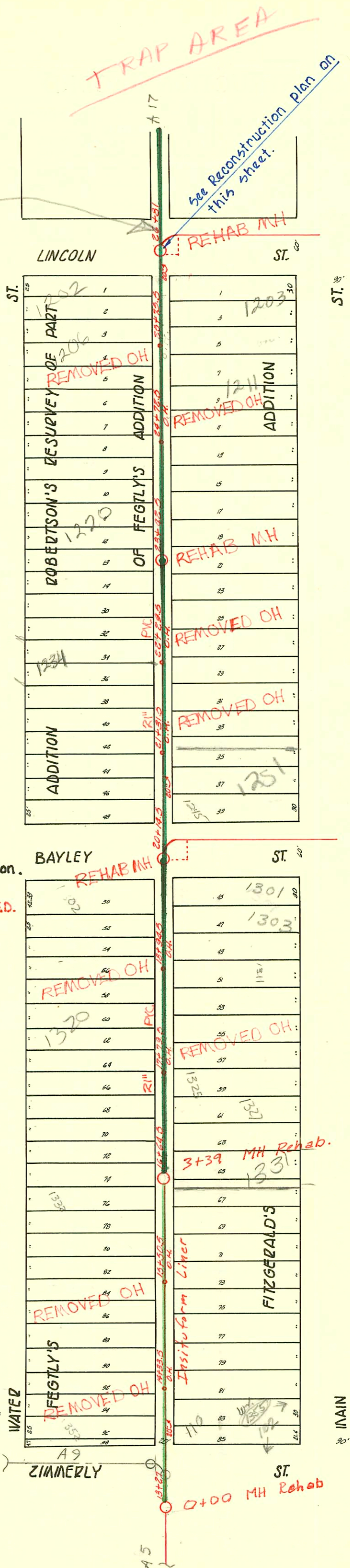
Reconstruction as part of  
**Lincoln Street Drainage**  
W.B. Carter Construction Company Inc.  
Booked: Feb. 3, 1970. Project No. C19-16  
Book: S.W.S. #4

SUR 2003-00446 2/26/63 1251 S. Main - NK  
Brand: 4" PVC - 4" DLTAP 120.4' N of MH 201145  
(21+34.9) 14" fall, shallow, 4" trap, 1H45, 1V45,  
Dirt alley cut  
1331 S. Main - 97-5264-7 4/15/97 rubber ex:  
Wye 343-6 S. of MH 1-4" CO. 1-4" wye  
3x4 FOR NOD at house 6x4 Gaslet in hole  
S' of Main (no mention of trap by ZIM)

San. Sewer #1 & #20 Rehabilitation  
betw. Douglas & Harry from Big ARK to Washington  
468-76-245-81642-000-000-001 Phase II  
Built by Insituform Plains  
Booked 2-9-89 from Plan.

RECONSTRUCT SANITARY SEWER 1#20,  
PHASE III  
PROJ. NO. 468-81996 (#630541)  
BUILT BY W.B. CARTER CONST. CO.  
BOOKED 5-3-95 FROM AS BUILTS

Repair- 2000-01781- 1220 S water - 8/100- Bob Scott - 4" PVC - Replace all but Lower 20' of sewer. No trap  
found in line that was replaced MH22



ST. #	DESCRIPTION	ST. #	DESCRIPTION
1	PART	1203	
2	REMOVED OH		
3	ADDITION	1211	ADDITION
4	REMOVED OH		
5	ADDITION		
6	REMOVED OH		
7	ADDITION		
8	REMOVED OH		
9	ADDITION		
10	REMOVED OH		
11	ADDITION		
12	REMOVED OH		
13	ADDITION		
14	REMOVED OH		
15	ADDITION		
16	REMOVED OH		
17	ADDITION		
18	REMOVED OH		
19	ADDITION		
20	REMOVED OH		
21	ADDITION		
22	REMOVED OH		
23	ADDITION		
24	REMOVED OH		
25	ADDITION		
26	REMOVED OH		
27	ADDITION		
28	REMOVED OH		
29	ADDITION		
30	REMOVED OH		
31	ADDITION		
32	REMOVED OH		
33	ADDITION		
34	REMOVED OH		
35	ADDITION		
36	REMOVED OH		
37	ADDITION		
38	REMOVED OH		
39	ADDITION		
40	REMOVED OH		
41	ADDITION		
42	REMOVED OH		
43	ADDITION		
44	REMOVED OH		
45	ADDITION		
46	REMOVED OH		
47	ADDITION		
48	REMOVED OH		
49	ADDITION		
50	REMOVED OH		
51	ADDITION		
52	REMOVED OH		
53	ADDITION		
54	REMOVED OH		
55	ADDITION		
56	REMOVED OH		
57	ADDITION		
58	REMOVED OH		
59	ADDITION		
60	REMOVED OH		
61	ADDITION		
62	REMOVED OH		
63	ADDITION		
64	REMOVED OH		
65	ADDITION		
66	REMOVED OH		
67	ADDITION		
68	REMOVED OH		
69	ADDITION		
70	REMOVED OH		
71	ADDITION		
72	REMOVED OH		
73	ADDITION		
74	REMOVED OH		
75	ADDITION		
76	REMOVED OH		
77	ADDITION		
78	REMOVED OH		
79	ADDITION		
80	REMOVED OH		
81	ADDITION		
82	REMOVED OH		
83	ADDITION		
84	REMOVED OH		
85	ADDITION		
86	REMOVED OH		
87	ADDITION		
88	REMOVED OH		
89	ADDITION		
90	REMOVED OH		
91	ADDITION		
92	REMOVED OH		
93	ADDITION		
94	REMOVED OH		
95	ADDITION		
96	REMOVED OH		
97	ADDITION		
98	REMOVED OH		
99	ADDITION		
100	REMOVED OH		

CONSTRUCTION RECORD							SERVICE RECORD					
STATION	ELEVATION		Depth	MANHOLE	4-INCH "Y" BRANCHES		No. of Permit		House Number		DATE OF PERMITS	
	Ground	Grade			North West	South East	North West	South East	North West	South East	North West	South East
26	105.98	99.84	6.74	26+47.5 MH 24+36	24+31	24+31	# 380	# 335	1203 S. Main		10-20-70	5-9-02
				25+75.5 O.H.	+86	+100	# 535		1200 S. Water		8-17-09	
					+60	+71			1200 S. Water		11-7-06	
25	104.91	99.14	5.77		+35	+39	# 159	# 457	1210 S. Water	1211 S. Main	4-5-09	10-25-02
				772.5 O.H.	+85	+79	# 171		1224 S. Water		3-25-10	
					+61							
24	105.31	99.04	6.27		+36	+50	# 692		1224 S. Water		11-4-09	
					+09	+19	# 712			1217 S. Main	8-7-00	9-29-06
				23+42.5	+58	+60	# 2000-91/170	# 233	1220 S. Water	1215 S. Main	5-7-08	11-27-07
					+33	+31	# 222		1225 S. Main		4-24-09	
23	104.35	98.94	5.41		+07	+01	# 840		1226 S. Water		5-2-13	
					+83							
					+58	+71	# 532		1232 S. Water		8-24-09	
				+29.5 O.H.	+33	+41	# 734		1237 S. Main		11-23-09	
22	104.69	98.84	5.85		+08	+11	# 733		1245 S. Main		8-24-11	
					+83		# 354		1238 S. Water		4-20-11	
					+58	+81	# 247		1244 S. Water		4-27-10	
				+31.5 O.H.	+33	+51						
21	105.67	98.74	6.93		+08	+81						
					+82	+90						
20	107.07	98.64	8.43	+14.5	+58	+62	# 1764	# 253	1246 S. Water	1245 S. Main	12-3-23	4-4-11
					+72	+68	# 206	# 846	1302 S. Water	1302 S. Main	4-16-17	11-16-20
					+48	+38						
19	107.65	98.54	9.11		+23	+08	# 318		1308 S. Water		8-7-16	
				+94.5 O.H.	+98							
					+73	+78	# 10		1311 S. Main		6-14-21	
18	107.45	98.44	9.01		+50	+48	# 281		1316 S. Water	1315 S. Main	9-24-21	2-29-20
				18	+22	+18	# 2000-05538	# 1555	1333 S. Water	1333 S. Main	10-22-23	10-22-23
					+97	+88	# 51		1318 S. Water		1-11-23	
				+79.5 O.H.	+73	+58	# 259817	# 21481	1320 S. Water	1325 S. Main	4-21-20	4-8-15
					+48	+58	# 301	# 112	1320 S. Water	1325 S. Main	4-21-20	4-8-15
					+23							
17	107.32	98.34	8.98		+00	+28	# 993	# 639	1324 S. Water	1327 S. Main	8-12-22	11-8-18
					+28	+28	# 313		1327 S. Main		4-15-21	12-21-08
				16+64.5	+74	+68.5	# 580	# 313	1332 S. Water	1341 S. Main	6-30-21	8-5-08
16	107.59	98.24	9.35		+11	+29	# 433	# 176	1338 S. Water	1341 S. Main	7-15-14	8-5-08
					+86	+99						
				+50.5 O.H.	+61	+69	# 599		1342 S. Water		11-9-10	
					+36	+39						
15	107.90	98.14	9.76		+11	+09	# 104	# 638	1346 S. Water	1349 S. Main	3-7-13	11-13-06
					+85							
					+60	+81	# 439		1350 S. Water		8-7-13	
				+33.5 O.H.	+35	+51	# 815		1345 S. Main		9-8-21	9-8-21
14	108.04	98.04	10.00		+10	+21	# 345	# 430	1352 S. Water	1355 S. Main	5-3-20	10-15-29
					+85	+91	# 2166	# 817	1346 S. Water	1349 S. Main	7-20-10	8-29-25
					+63	+61						9-8-21
13					+27	+48						
					+44							

Reconstruction (1969)

99.37  
99.42  
99.93

M.H. #1 } Siphon between M.Hs. #1 & 2  
M.H. #2 }  
M.H. #3 }

97-52647 4/2/47 1331 S. Main - Lubbes-

# 1637-Private Line-1239 S. Main-12-3-48-George Magruder  
# 6185-Tap-Trailer-1231 1/2 S. Main-8-7-53-Ledy  
# 4184-Tap-1223 S. Main-8-16-53-Joe McDonald  
# 1230-Tap-Trailer-1347 S. Main-6-21-54-Lendall Plog.  
# 6122-Tap-110 W. Zimmerly-Cayton-10-5-55  
# 7009-Trailer-1234 S. Water-Frederick Plog-12-6-55 (221 33)  
# C18783-102 W. Zimmerly-R.B. Byrd-4-13-70 (14+21)  
SP-25092-(251 S. Main) 4-10-90-Herring-(137' N of MH 20+14.5)  
# 18503-615/67 (1202 S. Water)-Herring  
(Said 8' from wye and 565' S of MH)