

WEST SUB MAIN "A" ON S. MORRIS & LAT. N. & S.  
S.S. #1-1889

TRAP AREA

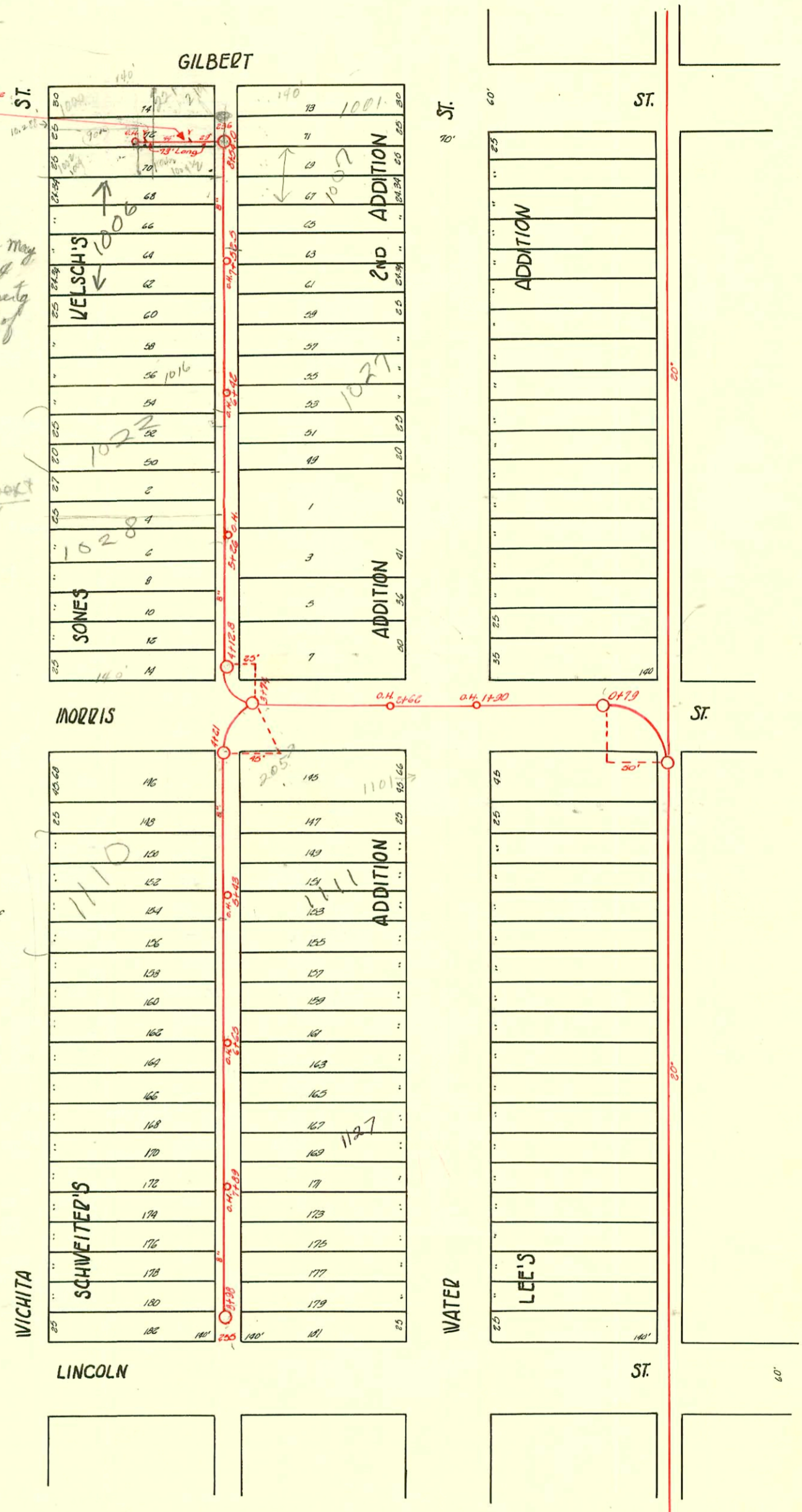
Plat 9-55

6" Private Line - 50' S. of property line  
connected 7' S. of M.H.  
Reg. Deeds,  
Misc. Bk. 142 p. 307  
Easement granted for sewer  
across E. 50' of lots 70, 72, 74  
Kaleh's 2nd Addn. on Wichita St.  
to party of 1st part Clarence Bremer + Mary  
owner of W. 90' of lots 70, 72, 74  
from Geo. F. Hilton + Carime, party  
of 2nd part, owner of E. 50' of  
lots 70, 72, 74.

Rep 97-42677 3/27/97 219 W. Gilbert  
6" sch 40 PUL - REP all but lower 1'  
and upper 10' wye 7' S. of M.H.  
(No mention of trap in map)

Easement #1: The E. 300' of tract beginning 100' S. of S.W. corner of  
Morris & Water S. 50' W. to river, N. along river to pt. W. of  
beginning W. to beginning.

Easement #330: The E. 300' of tract beg. 150' of S.W. cor. of Water &  
Morris S. to a point 100' N. of S.W. cor. of Greenway  
St. (Eas. Line) W. to river, N. along river to pt. W. of beg.  
E. to beg.



99-1676-7- 2/5/99- 1110 S Wichita - Bob Scott - 4" sch 40 - Full Replacement, Trap, 1-22 1/2  
97-6820-7 5/16/97 1027 S Water - AR Henning - wye meas. ok; 4" sch 40, 1 1/4" C.O. 1-4" TRAP  
6x4 Gasket into Hub.

CONSTRUCTION RECORD							SERVICE RECORD					
STATION	ELEVATION		Depth	MANHOLE	4-INCH "Y" BRANCHES		No. of Permit		House Number		DATE OF PERMITS	
	Ground	Grade			North West	South East	North West	South East	North West	South East	North West	South East
				8 +54		+77.5	# 6977	95-1525-7	219 W. Gilbert	1001 S. Water	12-1-55	2-3-95
				8 +50		+72.5	# 582	219 W. Gilbert	1001 S. Water	3-21-97	6-7-11	
				8 +33.5		+56	# 306	219 W. Gilbert	1001 S. Water	5-16-17	6-8-06	
8	109.05	103.86	5.19	8 +09.6		+11.6	# 2007-02479	268	1006 S. Wichita	R. See below	9-10-02	
				8 +09.6		+11.6	# 268	268	1006 S. Wichita		4-8-00	
				7 +85.0		+87.0	# 387	91-87647	1010 S. Water (Wichita)	1015 S. Water	8-3-37	11-18-91
				7 +61.3		+63.3	# 387	654	1010 S. Water (Wichita)			10-20-18
				7 +36.5		+38.5	# 240					
7	109.64	103.42	6.22	7 +11.7		+13.7	# 818		1010 S. Wichita	1023 S. Water	9-9-01	5-1-09
				6 +89.5		+91.5	# 281		1018 S. Wichita		4-20-07	
				6 +42 O.H.		+63.5	# 773	AT-16820	1027 R. See below			5-7-97
				6 +38.3		+40.3	# 489	773	1027 R. See below			10-22-17
6	109.48	102.98	6.50	6 +13.0		+15.0	# 736		1040 S. Wichita	1035 S. Water	4-26-50	10-23-10
				6 +89.5		+91.3	# 118					5-28-06
				5 +41		+43	# 478		1028 S. Wichita		9-23-15	
				5 +16.5		+18.5	# 393	99-6857-7	1028 S. Wichita		4-28-99	
5	109.06	102.54	6.52	5 +92.3		+94.3	# 3863	# 381	1032 S. Wichita	1041 S. Water	2-9-50	8-16-16
				5 +68.3		+70.3	# 209	# 39	1040 S. Wichita	1047 S. Water	8-21-22	4-13-03
				5 +45.1		+47.1						
4	108.58	102.15	6.43	4 +23.4		+25.4						
3	108.53	101.98	6.55			+74						
2	108.41	101.22	7.19			+61.5 O.H.						
1	107.97	100.78	7.19			+90 O.H.						
0	108.08	100.69	7.37			+79						
	108.76	104.30	4.46	+98 F.I.		+84	# 556	# 184 A	218 W. Lincoln	1149 S. Water	6-21-49	3-09-04
						+57	# 638	# 638	218 W. Lincoln	1145 S. Water		5-13-04
8	109.06	103.86	5.20			+33.7	# 422	# 252	218 W. Lincoln	1143 S. Water	7-25-21	10-26-07
				+89 O.H.		+87	# 405		1106 S. Wichita		4-26-22	
						+61.3	# 460	# 450	1134 S. Wichita	1125 S. Water	4-12-50	7-22-09
						+37	# 187		1124 S. Wichita		2-5-04	
7	109.35	103.42	5.93	7 +13.3		+15.3						
				+65 O.H.		+87.8						
						+61.0	# 1861			1121 S. Water		8-15-24
						+36.4	# 293	# 275	no record	1117 S. Water	5-14-16	4-11-21
6	109.07	102.98	6.09	6 +13		+15						
						+89.3	# 719	# 386	1116 S. Wichita	1110 S. Water	11-16-09	11-6-07
				+43 O.H.S		+62.8	# 977	# 977	1110 S. Wichita	R. See next pg	2-5-99	10-15-21
						+38.4	# 208	# 597	1111 S. R. Water			11-15-01
5	108.41	102.54	5.87	5 +18.6		+20.6	# 3880		1108 S. Wichita		7-18-91	
						+95	# 13	# 226	1105 S. Water		1-13-21	11-21-05
						+70.8						
						+46.5						
4	108.39	102.19	6.20	4 +28.8		+30.8	# 733	# 38	107 W. MONROE	1101 S. Water	8-17-21	4-4-23

2002-02479 91102 GP P186- 16" WYS repair- Repl lower 43' only, new 4" trap, 2H22, 145H, Dirt alley cut

9968577 41599 1028 S. Wichita Mills

97-16767 2-7-97 219 W. Gilbert - Boardman - voided job canceled by home and

# 943-Private Line-Trailer-5-14-34-Thompson Pkg.  
 # 824-Private Line-Trailer-5-5-54-Joe H. Donald  
 # 226-Private Line-1005 S. Wichita-3-12-28  
 # 971-Private Line-1005 S. Wichita-7-11-38-Fredrick  
 # 758-Tap-608-10 W. Lincoln-4-27-50-Jim Hanna (8+66)  
 # 404-Tap-1144 S. Wichita (Reg)-4-4-51-E.B. Brannon  
 # 5410-1016 S. Wichita-Trailer-Joshin 9-30-57-Deal off C14402-1016 S. Wichita 6-9-69-Schwartz Pkg (Trailer)  
 Sup C14403-1016 S. Wichita-Trailer-6-9-69-Schwartz Pkg B. (7+40)  
 Sup C70504-1027 S. Water-3-8-79