

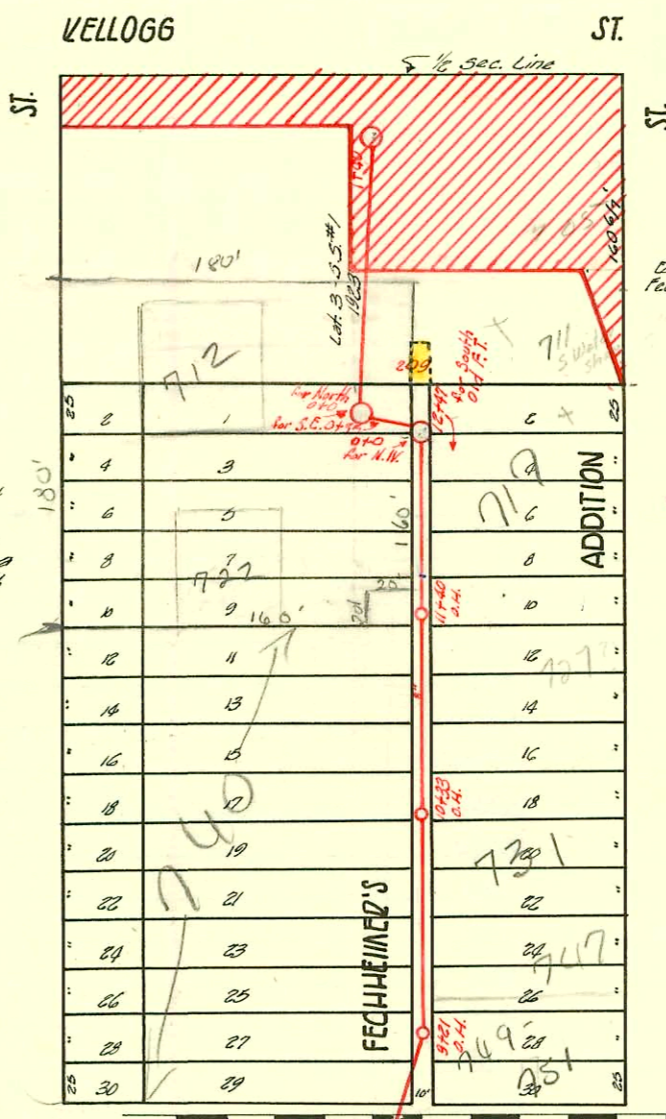
WEST SUB MAIN "A" ON INDIANAPOLIS & LAT. N & S. IN ALLEY WEST OF WATER

S.S. #1-1889

TRAP AREA 21

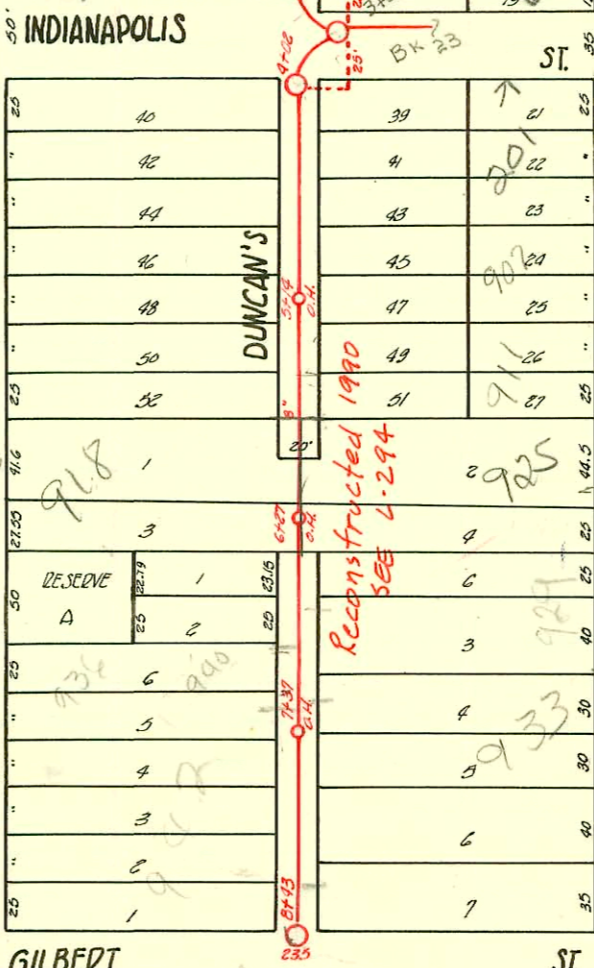
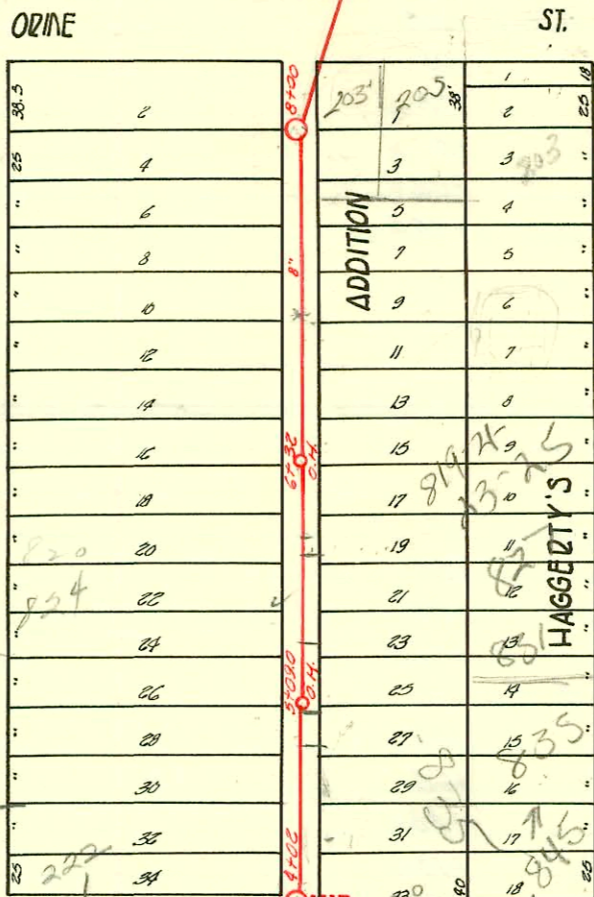
Plot 955

EASEMENT #894: for new line in unplatted tract bet Fechtmeier's Addition and Kellogg St. Five feet (5') either side of line beginning at a point (old fish tank) 157' West of E of Water St. (stones at Kellogg & N.E. of Orme) and 184' S of section line in Kellogg produced from Lawrence over stone in center of Water and Kellogg, thence West by North to a point in Kellogg and 191.6' W. of E of Water - thence North & East to a point 31' South of section line in Kellogg and 186.5' N. of E of Water St.



Easement #894: Thru S. 25' of platted tract bet Fechtmeier's Addition & Kellogg St.

NOTE: CROSS-HATCHED AREA CONDEMNED FOR U.S. 54 HIGHWAY R.I.W.



#26302 10/2/90 923 S. Water - Lent Bulgess - 4" SDRS - Repl. approx 40' of pipe from house to Garage. Tied onto 6" clay tile. Insp by R Leidy 10/2-90

S/O 2000-01133- 5/5/00- 265 W Orme - Connected to 203 W Ormessee info Below

S/O 2000-01132- 5/5/00- 203 W Orme St - McClung's Note: connected w/ 205 W Orme - 6" clay tile sealed off 19' N of MH + 7.5' from main no cut

916223378701 - 5/20/91 747 (b) S water Line for trailers - A Henning 4" line s/o 60' N of O.H. and 3' off main - no alley cut.

92-36903-7 10/7/92 722 S Wichita - Joe Havel - 11+67.0 top, 4" PVC 40' feet w/ 4" TAP; 80 ft S of MH

97-3832-7 3-4-99 740 S. Wichita - NC - 4" PVC - 25' stub outs - 4" trap - 4" clay TAP 228' S of MH 12+47 (10+19)

S/O 1999-00636 9/99 731 S Water - Clearwater's Exp - s/o 4" clay tile line 10.5' S of NPL + 18' E of WPL (RPL)

SWR2002-00634 - 3/10/02 - 925 S water st Always P1bg - 4" PVC - Replaced all but lower 2' - No msmt - 3H45, 1H22, 4" twin CO @ house, 4" trap installed, dirt alley cut

CONSTRUCTION RECORD

SERVICE RECORD

STATION	ELEVATION		Depth	MANHOLE	4-INCH "Y" BRANCHES		No. of Permit		House Number		DATE OF PERMITS	
	Ground	Grade			North West	South East	North West	South East	North West	South East	North West	South East
				12+47 FT								
12	109.56	104.93	4.63		+42.6 +44.6 +16.7	+44.6 +46.6 +18.7						5-18-01 4-16-06
					+94.0 +114.0 +69.5	+96.0 +98.0 +71.5						
11	102.29	104.68	3.61	11+40.0 O.H.	+43.4 +21.5 +95.0 +69.5	+47.4 +23.5 +97.0 +71.5						7-29-92 4-17-09 4-7-02
					+45.3 +23.2 +99.2 +73.2 +51.3	+47.3 +25.2 +97.0 +71.5						
10	109.58	104.43	5.15	10+33.0 O.H.	+23.2 +99.2 +73.2 +51.3	+47.3 +25.2 +97.0 +71.5						4-12-74 1-24-25 7-26-00 5-22-90
					+27.4 +41.9 +17.9 +89.0	+23.4 +43.9 +19.9 +91.0						
9	110.23	104.18	6.05	9+21.0	+27.4 +41.9 +17.9 +89.0	+23.4 +43.9 +19.9 +91.0						6-24-90 5-5-11
					+43.0 +24.0 +99.5 +76.0	+45.0 +26.0 +78.0 +78.0						
8	110.62	103.93	6.69	8+00.0	+43.0 +24.0 +99.5 +76.0	+45.0 +26.0 +78.0 +78.0						10-12-05
					+51.9 +28.4 +81.0 +56.6	+53.9 +30.4 +83.0 +58.6						
7	108.78	103.68	5.10		+51.9 +28.4 +81.0 +56.6	+53.9 +30.4 +83.0 +58.6						3-22-79 7-28-06
					+33.0 +80.0 +55.5 +32.0	+35.0 +82.0 +57.5 +34.0						
6	109.31	103.43	5.88		+33.0 +80.0 +55.5 +32.0	+35.0 +82.0 +57.5 +34.0						11-21-13
					+59.0 +40.0 +13.0 +32.0	+35.0 +45.0 +15.0 +34.0						
5	108.78	103.18	5.56	5+09.0 O.H.	+59.0 +40.0 +13.0 +32.0	+35.0 +45.0 +15.0 +34.0						5-28-12
					+108.0 +106.0 +102.99 +102.59	+110.0 +108.0 +104.0 +103.0						
4	108.98	102.99	5.78	4+08.0	+108.0 +106.0 +102.99 +102.59	+110.0 +108.0 +104.0 +103.0						9-30-65 10-17-84 4-29-12 1-10-11
3	110.29	102.59	7.70		+108.0 +106.0 +102.99 +102.59	+110.0 +108.0 +104.0 +103.0						5-8-79 3-5-74
2	109.13	102.19	6.94		+108.0 +106.0 +102.99 +102.59	+110.0 +108.0 +104.0 +103.0						12-19-03
					+37.0 +13.0 +90.0 +66.0	+39.0 +15.0 +92.0 +68.0						
8	108.27	104.15	4.12		+37.0 +13.0 +90.0 +66.0	+39.0 +15.0 +92.0 +68.0						6-23-20 5-26-05
					+37.0 +19.0 +95.0 +77.6	+45.0 +21.0 +97.0 +79.6						
7	108.89	103.85	5.04	7+37.0 O.H.	+37.0 +19.0 +95.0 +77.6	+45.0 +21.0 +97.0 +79.6						7-9-57 4-9-57
					+27.0 +23.6 +99.5 +75.0	+49.6 +25.6 +82.0 +77.0						
6	108.66	103.55	5.11	6+27.0 O.H.	+27.0 +23.6 +99.5 +75.0	+49.6 +25.6 +82.0 +77.0						7-19-17 6-3-02
					+51.6 +28.0 +80.0 +56.4	+53.6 +30.0 +82.0 +58.4						
5	108.69	103.25	5.44	5+40.0 O.H.	+51.6 +28.0 +80.0 +56.4	+53.6 +30.0 +82.0 +58.4						8-4-15 10-10-40
					+32.0 +40.0 +108.0 +106.0	+34.0 +42.0 +110.0 +108.0						
4	108.74	102.96	5.78	4+08.0	+32.0 +40.0 +108.0 +106.0	+34.0 +42.0 +110.0 +108.0						11-20-24 11-17-03
					+109.85 +108.68 +108.68 +107.55 +107.79 +108.15	+105.45 +105.49 +105.49 +105.54 +105.59 +105.64						
040-014 FT.	109.85	105.45	4.40	040 or 040 for line 4	+109.85 +108.68 +108.68 +107.55 +107.79 +108.15	+105.45 +105.49 +105.49 +105.54 +105.59 +105.64						
0425-040	108.68	105.49	3.19		+109.85 +108.68 +108.68 +107.55 +107.79 +108.15	+105.45 +105.49 +105.49 +105.54 +105.59 +105.64						
040	108.68	105.49	3.19		+109.85 +108.68 +108.68 +107.55 +107.79 +108.15	+105.45 +105.49 +105.49 +105.54 +105.59 +105.64						
0450	107.55	105.54	2.01		+109.85 +108.68 +108.68 +107.55 +107.79 +108.15	+105.45 +105.49 +105.49 +105.54 +105.59 +105.64						
140	107.79	105.59	2.20		+109.85 +108.68 +108.68 +107.55 +107.79 +108.15	+105.45 +105.49 +105.49 +105.54 +105.59 +105.64						
1440±	108.15	105.64	2.51	1440	+109.85 +108.68 +108.68 +107.55 +107.79 +108.15	+105.45 +105.49 +105.49 +105.54 +105.59 +105.64						

C46584-706 S. Wichita - 9-10-74 - E. Schuster (0+51)

2884 - Top - 940 S. Wichita - 12-12-50 - Frederick Pflug, Co. Repl all but lower 2' # 13214 - 7285 Wichita - 3-14-85 - Henning - 26 5/8" N.P. for 5/8" # 0133 - Top - 210 W. Indianapolis - 7-3-40 - A. J. Kline # 21588 - 9-28-88 - 911 S. Water - No meas. taken # 0176 - Saffling - 402 S. Water - 8-14-53 - Trailer - Creekmore # 6177 - Private Line - 747.5 Water - 8-4-55 - Trailer - Creekmore

Leak off - 729 S. Water - 9/27/72 - Al Henning
C43900 - 803 S. Water - 3-8-74 - Leak off - Al Henning (owner not found or sealed)
SO C44561 - 708 S. Wichita - 4-19-74 - Al Henning (0+85)
800 52004 722 S. Water - 12-12-75 - Joe Matthews
C74462 - 801 S. Water - 9-21-79 (8+13.5)