

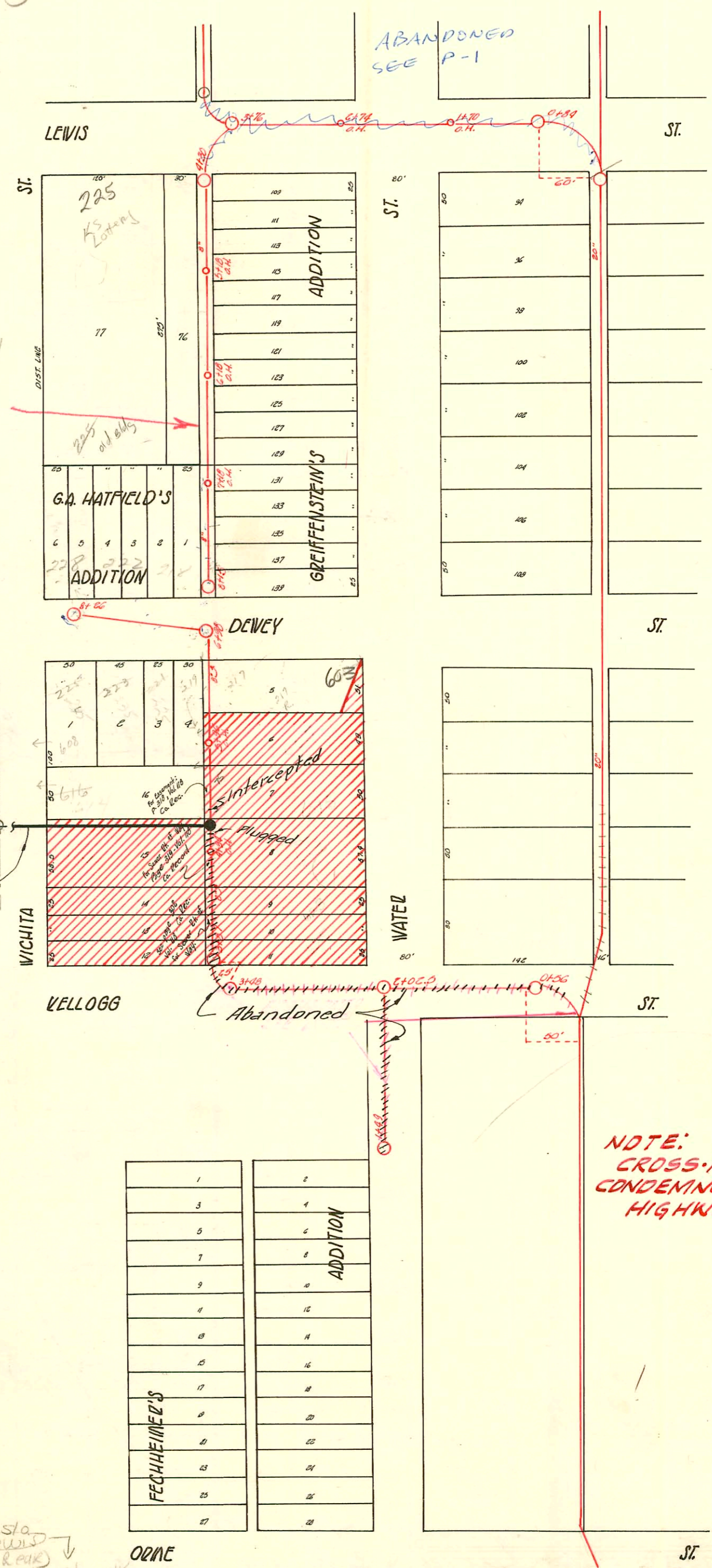
WEST SUB MAIN "A" ON KELLOGG & LAT. N. W. & S.  
LAT. S FROM WEST SUB MAIN ON LEWIS ST.  
S.S. #1 - 1889

TRAP AREA

Plat 9-55

RECONSTRUCTED  
SEE K-225

Relocated San. Sewer  
See Page J-155



# 23525 (7/13/89) (Pl Henning) Sta  
225 W. Lewis (Old Bldg in Rear)  
4" cast iron line sealed off 1' inside side walk  
parallel to Dewey st and 42' E of MIT in  
intersection of Dewey & Wichita sts.

