

MAIN "A" FROM ORME TO LEIVIS  
S.S. #1 - 1889

TRAP AREA

Plat 9-55

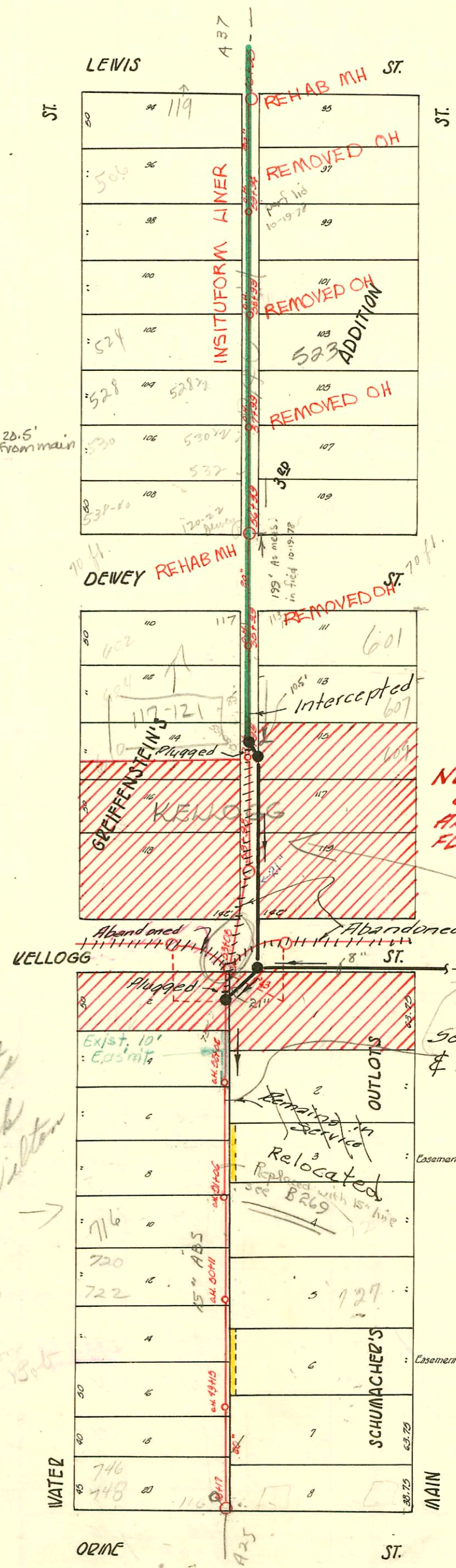


SCALE: 1" = 100'

RECONSTRUCT SANITARY SEWER  
NO. 1+20  
PROJ. NO. 468-81996 (630541)  
BUILT BY INSITUFORM PLAINS INC  
BOOKED 5-16-94 FROM AS BUILTS

RECONNECTIONS

STATION	ADDRESS	DIRECTION
60+80.4	119 W. Lewis	West
60+53.4	101, 103, 105 501 S. Main 107+109 W. Lewis Apts. 1, 2, 3+4	East
60+08.5	506 S. Water	West
60+04.5	505 S. Main	East
59+30.3	519 S. Main	East
58+86.3	540 S. Water	West
58+66.8	523 S. Main	East
58+56.3	540 S. Water	West
57+61.5	537 S. Main	East
57+38.4	537 S. Main	East
55+17.6	117 + 121 W. Dewey	West



NOTE: CROSS-HATCHED AREA CONDEMNED FOR U.S. 54 HI-WAY R/W.

See Relocated Sewer Page J-155 \$ B269

write no permits for this block till o.k. by wilton  
OK 9-9-76  
Wilton  
Per. 15th

WATER

MAIN

ORME ST.

LEIVIS ST.

CONSTRUCTION RECORD

SERVICE RECORD

STATION	ELEVATION		Depth	MANHOLE	4-INCH "Y" BRANCHES		No. of Permit		House Number		DATE OF PERMITS	
	Ground	Grade			North West	South East	North West	South East	North West	South East	North West	South East
				60 + 95								
60	109.61	102.64	6.97	60+51	+75.9	+73.9	#106	#327	502 S. Water	18-11-03		
					+40.7	+41.9	#326		117-119 S. Water	11-3-73		
				+94 O.H.	+99.4	+99.4		#87	503 S. Main	8-25-04		6-3-10
					+92.6	+92.6	#492		506 S. Water	10-25-12		6-8-26
					+79.8	+77.8						
					+54.4	+52.4	12436		519 S. Water	11-1-84		
59	109.94	102.54	7.40	59	+31.7	+33.7	#328		403 S. Water	11-9-01		
				59	+06.3	+08.3	#482		508 S. Water	10-21-12		
				+99 O.H.	+81	+83						
					+55.8	+57.8	#12054		504 S. Water	5-16-73		
					+30.4	+32.4	#889		513 S. Main	3-22-02		7-28-04
58	109.57	102.44	7.13		+05.6	+07.6	#13750	#9812	540 S. Water	3-27-67		8-17-91
				+99 O.H.	+80.4	+82.4	#12751		528 S. Water	2-12-69		
					+55.4	+57.4	#213780		528 1/2 S. Water	2-12-69		
					+87.6	+89.6	#1129		530 S. Water	5-9-04		
57	109.20	102.34	6.86	57	+02	+04		#363	538 S. Water	10-13-25		
								#246	NO Record			10-10-28
				56 +99	+05.6	+07.6			535 S. Main			3-25-22
56	109.57	102.24	7.33									
				55 +99 O.H.	+81	+83		#2441	603 S. Main	10-2-68		12-4-79
					+56	+58		#3632	604 S. Water	10-11-02		11-21-10
					+30.4	+32.4		#447	609 S. Main	9-23-68		9-23-90
55	109.74	102.14	7.60	55 +99 O.H.	+05	+07	#10624	#663	607 S. Main	1-3-04		10-23-16
									607 S. Main	3-15-99		8-11-57
									605 S. Main			6-26-16
					+81.6	+83.6		#606	645 S. Main	9-23-02		9-28-09
					+56.6	+58.6		#317	618 S. Water	12-10-04		5-27-09
54	109.99	102.04	7.95		+31.4	+33.4						
				+98	+08.5	+10.5						
					+84	+86	#1183	#1199	113 S. Water	8-11-57		8-11-57
53	109.14	101.94	7.20	+08	+58.6	+60.6	#802	#309	116 S. Main	3-11-04		10-10-91
					+80	+82		#357	101 S. Main			4-21-19
					+55.3	+57.3	#49	#110	104 S. Water	8-4-10		8-11-59
					+30	+32	#341	#243	109-11 S. Kelloog	11-29-01		11-26-06
52	108.75	101.84	6.91	+02 O.H.	+04.3	+06.3	#53	#1533	106 S. Water	1-30-17		
					+77.8	+79.8		#59	107 S. Main			8-19-05
					+52.5	+54.5	#56740	#2132	115 S. Main	8-12-01		1-3-01
				+06 O.H.	+87.3	+89.3	#55675	#780	110 S. Water	6-1-76		3-13-40
51	108.79	101.74	7.05		+02	+04		#162	117 S. Main	8-6-30		
				50 +99 O.H.	+76.5	+78.5	#47417	#462	116 S. Water	11-25-73		8-22-07
					+51.5	+53.5			115 S. Water	10-28-02		
50	109.00	101.64	7.36	+11 O.H.	+66.2	+68.2						
					+00.8	+02.8	#11163	#331	124 S. Water	4-26-74		
					+75.9	+77.9	#4579	#162	116 S. Water	11-15-01		
					+50.3	+52.3	#6268		129-31-33 S. Main	10-25-51		#162-10-25-94
49	109.45	101.54	7.91	+14.5 O.H.	+23	+25		#311	136 S. Main	11-5-22		5-7-74
					+98.5	+100.5	#45232		142-44 S. Water	6-10-74		5-27-10
					+73	+75	#170	#378	145 S. Main	7-30		7-30
48	109.11	101.44	7.67	+17	+48	+50	#324	#400	146 S. Water	11-6-01		3-22-73
					+23	+25			116 S. Main			9-6-16

702 C 63340 - 117 W. Dewey - B. Person - 10-4-77 (55+09) - Repl 4" Tap Ferrum C.I. S. 007 MA N. 055 S. 249  
 Seal off C 44429 (727 S. Main) - Al Henning - 4-12-74 (50+22)  
 Seal off C 44421 (720 S. Water) - Al Henning - 4-12-74 (57+23)  
 Tap C 38051 - 540 S. Water - Bentley on land. 4/3/73 (58+77)  
 C 20220 - 723 S. Main - Seal off J. C. Person - 7-23-70  
 Seal off #1419 - Tap - (1325 Water) W.A. Zahowek - 10-4-59 - 244500 - 4-23-74 - Al Henning (49+43.4) #91-34621-7 - 101891 - 537 S. Main - C. Lee Tade -  
 Seal off #57 - Tap - (601 S. Main) - 4-5-32 - C. A. Wiant - 24410 - 12-4-89 - Alvin Henning (55+26) (410040 Tap 57+50)  
 #745 - Tap - 519 S. Main - 12-8-41 - George Nagruder  
 #43 - Tap - 17 W. Kelloog - 11-19-42 - C. Frank McClay  
 #1401 - Tap - 535 S. Main - 8-27-49 - Frederick P. B.  
 #13723 - Seal off 532 S. Water (124 S. Water) - 1-18-61  
 #13781 - Seal off 532 S. Water (124 S. Water) - 1-18-61 (57+77)  
 #13777 - Seal off 124 S. Water (124 S. Water) - 1-18-61  
 C 75889 Seal off 108-110 Dewey - George Cherry 12-28-79 (56+99) W.  
 C 5052 - 523 S. Main - 1-13-82 - Ed Glover. 56+990 W.