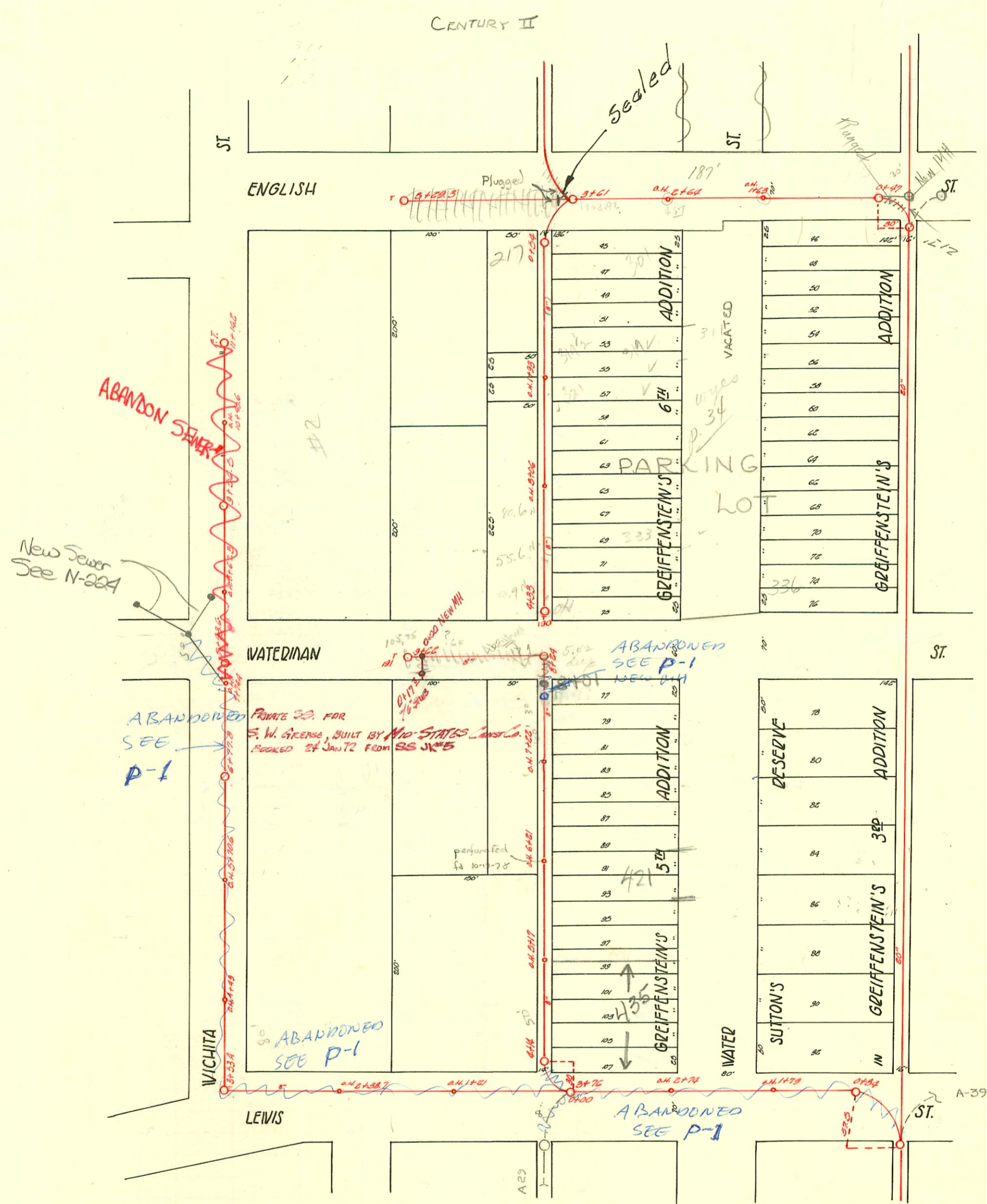


Plat 9-52

WEST SUB MAIN "A" ON LEVIS & LAT. N.
WEST SUB MAIN "A" ON ENGLISH & LAT. S.
S.S. #1-1889

TRAP AREA



A-39

CONSTRUCTION RECORD							SERVICE RECORD					
STATION	ELEVATION		Depth	MANHOLE	4-INCH "Y" BRANCHES		No. of Permit		House Number		DATE OF PERMITS	
	Ground	Grade			North West	South East	North West	South East	North West	South East	North West	South East
0	110.05	104.19	5.86		+47	+49.5						
1	109.35	104.34	5.01	+21 O.H.	+85.5	+88						
2	109.45	104.49	4.96	+38.7 O.H.	+44.5	+47	#345		232 W Lewis		10-14-41	
3	110.15	104.64	5.51		+81	+89	#314		301 W Lewis		6-9-13	
				+53.4		+103	#313		305 W Lewis		6-9-13	
							#304		307 W Lewis		6-5-13	
4	109.95	104.79	5.16		+73.5		#177		421 S Wichita		4-7-13	
				+49 O.H.	+106	+31						
					+88.5	+31						
					+58	+54.5	#206		430 S Wichita		4-22-13	
					+79.5	+82						
5	108.00	104.94	3.06		+15	+12.5	#553		N.W. Cor. of Lewis & W. 4th		11-9-15	
					+48	+45.5	#168	#131	417 S Wichita	420 S. Wichita	4-4-18	3-18-13
				+70.6 O.H.	+81	+78.5						
6	107.95	105.09	2.86		+14	+11.5	#158		409 S. Wichita		4-1-13	
					+49.5	+47						
						+68	#660		402 S. Wichita		7-30-20	
				+77.8	+83	+80.5						
7	108.95	105.24	3.71		+14							
					+44.5							
				+74.4 O.H.	+79.5	+77	#2592		318 W. Waterman	230 W. Waterman	1-16-46	1-7-72
8	109.30	105.39	3.91		+27	+24.5	#609	#29854			10-26-16	
				+67.3 O.H.	+72.5	+70						
9	110.15	105.54	4.61		+08	+05.5	#591		334 S. Wichita		11-9-31	
					+56.5	+40.5	10715		330 W. Waterman		4-17-84	
					+72.5	+70						
						+98.5						
10	109.95	105.69	4.26		+01		#102		315 S. Wichita	321 J 251	8-7-28	
				+40.6 O.H.	+46							
					+78.5	+76	10716		320 W. Waterman		4-17-84	
11	109.35	105.84	3.51		+09		#166		301 S. Wichita		7-11-65	
				+14.6 F.T.								

PRIVATE S.S. FOR S.W. GREASE

0+00

0+00 OVER EXIST LINE

0+17 3/4" STD S.W.

#6620
#27885

220 W. S. WATERMAN

1-7-72

2003-01686 42603 435 S water - seal off 6" clay tile line 8' from main + 41' N of MH - No alley cut

96-80147 5-29-96 400 W waterman - (Temp conn for Const Trailer for P.A. Const) -

6562	(221 W. Waterman)	Al Henning	9-16-82	3+53.4 N	(4+68.4)	(115' N of MH)
6561	" " " 5/8"	"	"	4+14.0 N	(4+60.0)	(46' N of MH)
6560	" " " 5/8"	"	"	"	(7+31.0)	(73.0 S of MH)
6559	" " " 5/8"	"	"	"	(7+02.0)	(122.0 S of MH)

70 #10714 220 W. Waterman Henning 4-17-84 See permit.

50 #11666 Letton Storage 220 W. Waterman Gray Bus 10-26-59

#14019 Letton Storage - 225-27 W. Waterman Gray Bus 3-29-61 (17+19)

B1711 220 W. Waterman Gray Bus 7-27-64 - Top (10+65.3) (82' E of m.N. in intersection)

B4313 Seal off 4 3/8" & water brick pty. 10-11-65

B4315 Seal off 3 1/2" & water brick 10-11-65 (1+75.6)

CONSTRUCTION RECORD							SERVICE RECORD					
STATION	ELEVATION		Depth	MANHOLE	4-INCH "Y" BRANCHES		No. of Permit		House Number		DATE OF PERMITS	
	Ground	Grade			North West	South East	North West	South East	North West	South East	North West	South East
	110.29	105.50	4.79	+29.3 O.H.								
5	111.19	105.42	5.77		+26.8 S	+24.8 N	#238	#497	300 S. Wichita	7th #	12-4-07	12-16-08
4	111.56	105.17	6.39		+77.4 S	+75.4 N	#274		No Record			
				+33 F.T.								
4	110.73	106.17	4.56		+27.2		#1802		224 W. Waterman		11-8-44	
					+20.1	+25.2						
						+89.4						
					+77.4	+75.4						
					+52.4	+50.4						
				+06 O.H.	+27.4	+25.4						
3	111.09	105.92	5.17		+02.8	+00.8	#52		321 S. Water		4-24-05	
					+81	+79	#97		307 S. Water		6-13-05	
					+53	+51	#405		319 S. Water		6-16-17	
					+28.2	+26.2	#2700				8-1-00	
2	111.17	105.67	5.50		+03.3	+01.3	#13199		319 S. Water		2-8-60	9-21-94
				+93 O.H.								
					+78.1							
					+53.2	+76.1						
					+29	+51.2						
1	111.22	105.42	5.80		+00.5	+27						
						+94.5						
					+80.4	+78.2	#134315		311 S. Water		10-11-65	3-7-07
0	111.21	105.21	6.00	+54	+60	+58	#2652		217 N. English		9-5-46	
3	111.43	104.92	6.51	+61								
2	111.66	104.67	6.99	+64 O.H.								
1	110.86	104.42	6.44	+63 O.H.								
0	110.68	104.29	6.39	+47								
	108.72	105.75	2.97	+64 F.T.								
					+60 S							
					+34.7 S	+32.7 N						
9					+09.8 S	+07.8 N	#387		no record		10-3-14	
					+84.5 S	+82.5 N						
8	110.81	105.30	5.48	+64	+57.5 S	+55.5 N						
					+89	+87						
					+64	+62						
				+22 O.H.	+38.8	+36.8	#442		211 W. Waterman		7-19-09	10-17-00
7	110.59	104.99	5.60		+13.8	+11.8						
					+88.6	+86.6						
					+63.7	+61.7	#301		411 S. Water		8-4-04	
				+21 O.H.	+37.3	+35.3						
6	110.44	104.74	5.70		+12.5	+10.5	#29383		421 S. Water		7-1-68	7-22-91
					+87.3	+85.3	80					
					+62.5	+60.5						
				+17 O.H.	+37.6	+35.6						
5	110.41	104.49	5.92		+12.9	+10.9						
					+88.5	+86.5	#297		431 S. Water		8-2-4	
					+60.1	+58.1	#15103		204-210 W. Lewis		11-19-20	12-2-90
					+35.5	+33.5	#851					
4	109.99	104.29	5.70	+14	+18.8	+16.8						
3	109.52	103.99	5.53	+76								
2	109.86	103.74	6.12	+74 O.H.								
1	109.73	103.49	6.24	+70 O.H.								
0	109.80	103.45	6.35	+84								

31890 - 218 W. Lewis tap 4-28-72 - Dean Thomas - old conn sealed
 6199 - 305 S. Water - J.C. Lewis 12-19-67 - Seal off (1+40)

- #1215 - Tap - 410 S. Water - 9-19-22
- 300 S. Wichita - 10-21-27 - #903
- #45 - Tap - 305 S. Water - 1-30-29 - Long Pibg. Co.
- #560 - Tap - N.W. Cor Water & Waterman - 5-15-29 - Long Pibg. Co.
- #35 - Tap - 231 English - 4-26-34 - Donaway Pibg. Co. - Chet Davidson - Used old connection
- #3048 - 931 S. Water - 1-13-41
- #6709 - Used old connection - 401 S. Water - 12-9-51 - E.C. Brinnon
- #2375 - Tap - 217 W. English - 10-31-45 - Harley Riggs
- #2879 - Tap - 217 W. Waterman - 5-28-46 - Eugene Reynolds
- #4420 - Tap - 223 W. Waterman - 4-20-51 - Eugene Reynolds

Seal off #13217 - 315 S. Water - 4-15-65 - Insubrid Pibg.
 #6757 - 335-37 S. Water - Seal off - J.C. Lewis - 2-6-68
 31892 - Seal off 4-28-72 Dean Thomas (see top for new conn.) (5+17)