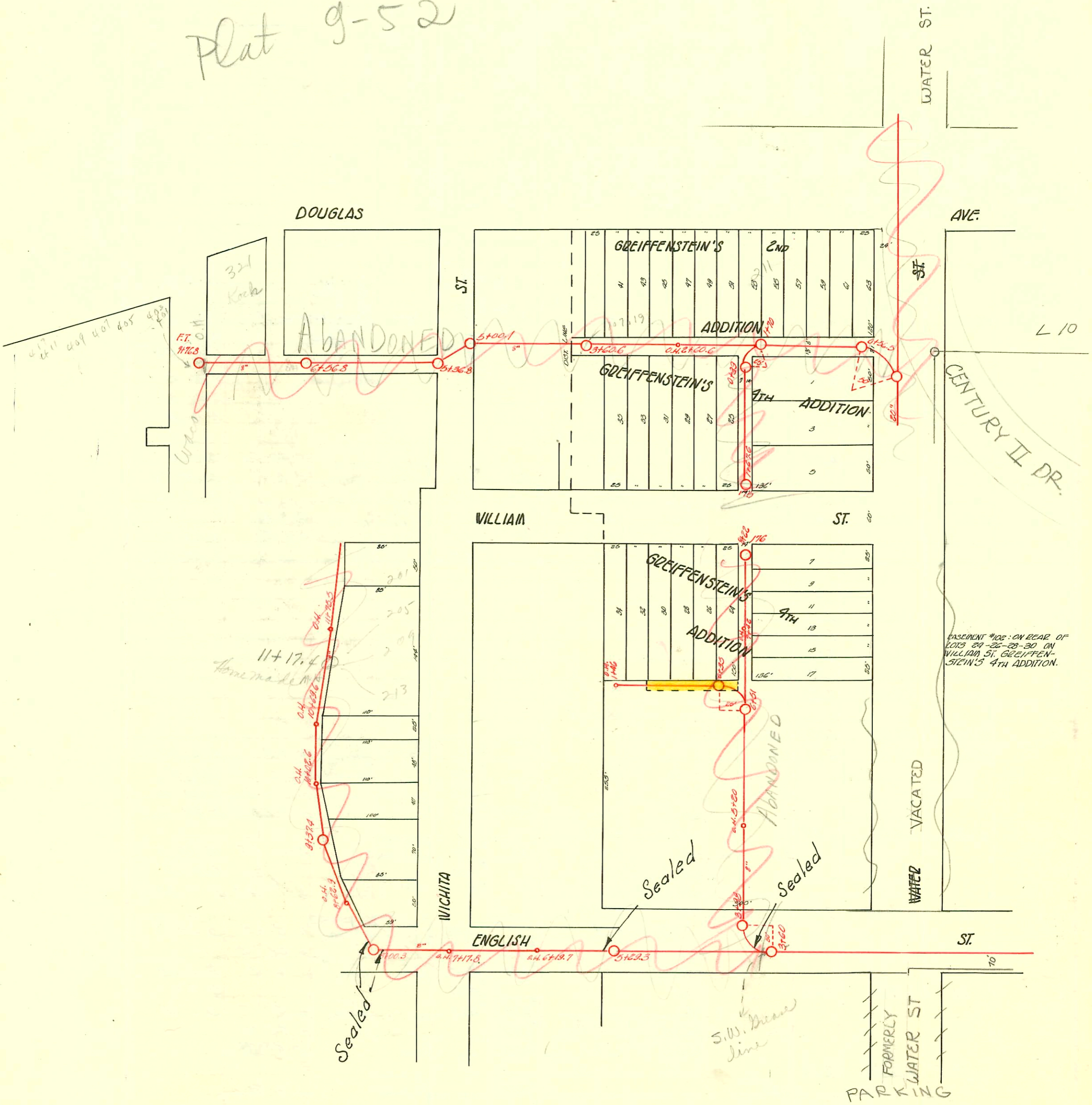


LAT. N. & SPUR W. FROM WEST SUB MAIN "A" ON ENGLISH ST.  
LAT. W. & SPUR S. IN ALLEY SOUTH OF DOUGLAS AVE.  
S.S. #1-1889

TRAP AREA

Plat 9-52



See L-11

SCALE 1" = 100'

CONSTRUCTION RECORD							SERVICE RECORD					
STATION	ELEVATION		Depth	MANHOLE	4-INCH "Y" BRANCHES		No. of Permit		House Number		DATE OF PERMITS	
	Ground	Grade			North West	South East	North West	South East	North West	South East		
1	111.59	107.10	4.49	+67.6 FT.	+63.1 W	+63.0 E	#702	#105	217 W. Douglas	327 W. Douglas	1-17-19	7-29-19
					+48.4	+39.5	#703		217 W. Douglas		1-17-19	
	112.10	106.65	5.45			+13.5		#545		129 S. WATER		11-4-15
0					+179.7	+59.5	#704		217 W. Douglas		1-17-19	
	112.69	106.26	6.43	+39	+18.6	+42.3	#705	#1	217 W. Douglas	202.5 WATER	1-17-19	1-2-94
7				+76.8 FT.	+62.3 S	+59.8 N	#298	#304	W. Douglas	W. Douglas	4-16-21	4-16-11
					+41.8	+39.3	#298	#347	W. Douglas	W. Douglas	4-16-21	7-27-20
					+16.8	+19.3	#298	#300	W. Douglas	W. Douglas	4-16-21	4-16-11
						+100.3	#298	#395	W. Douglas	W. Douglas	4-16-21	7-27-20
					+97.8		#298				4-16-21	
6				+56.8 O.H.	+70.8 S	+73.3 N	#298	#350	W. Douglas		4-16-21	6-23-13
					+44.8	+47.3	#298				4-16-21	
					+19.8	+22.3	#298				4-16-21	
					+96.8	+99.3	#298				4-16-21	
5				+36.8	+43.3	+45.8	#298	#531	W. Douglas + W. Douglas	301 W. Douglas	4-16-21	7-26-17
				+00.1	+97		#20		NE corner of lot		1-19-15	
					+58.6 S	+56. N	#39		245 W. Douglas			2-25-16
4					+33.6	+31.1		#559				2-9-18
					+08.6	+06.1	#238		237 W. Douglas	248 W. Douglas		3-24-12
3	112.70	107.19	5.51	+60.6	+58.6	+56.1						
					+36.6	+34.1						
	112.85	106.89	5.96		+20.1 S	+17.6 N	#370		227-29 W. Douglas			7-1-13
8					+94.7	+92.7	#8		225 W. Douglas			1-8-13
				+60.6 O.H.	+70.8	+68.8	#2470		225 W. Douglas			11-4-24
					+43	+41						
1	112.88	106.25	6.63		+19	+17	#142		212 W. Douglas		4-6-15	
	113.24	106.01	7.23	+70	+25.5 S	+23.5 N	#13635		211 W. Douglas		11-21-20	1-2-92
0					+46	+22	#327		209 W. Douglas		9-8-04	
		105.60			+98.1		#3920		207 W. Douglas		8-15-99	7-25-41
0	112.21	105.33	6.88	+56.5	+74.2		#168		SW corner of lot		9-2-05	
					+53	+51	#106		201 W. Douglas		8-24-03	9-10-09
1					+52 S		#92				7-21-03	
	112.10	107.41		+46 O.H.		+43.5 N	#18					3-11-05
						+25.9 N						
0	111.72	107.11				+01.8 N						
	111.62	106.74				+78.2 N						
8				+22 FT.		+19.5						
	111.94	107.28	4.66			+92.5						
				+42 O.H.		+62.7	#725		205 S. WATER			12-28-14
7	111.39	106.78	4.61			+32.3						
	111.10	106.51	4.59	+51	+84.7	+62.5	#82	214 W. Wichita	213 S. WATER		5-14-07	3-24-00
6					+42.2	+40.2						
	110.94	106.28	4.66		+18	+16						
					+96	+94						
5					+72.2	+72.2						
	110.97	105.78	5.19	+20 O.H.	+24	+22					1-27-09	
					+99.6	+97.6						9-11-02
4					+75.5	+73.5						
					+51	+49	#707		center of corner			12-23-10
3	111.31	105.28	6.03	+98	+27.2	+25.2						
	111.49	105.05	6.44	+60	+02.8	+00.8						

Handwritten notes on the right side of the page, including "Seal off" and "Koch" with arrows pointing to specific rows in the table.

CONSTRUCTION RECORD						SERVICE RECORD						
STATION	ELEVATION		Depth	MANHOLE	4-INCH "Y" BRANCHES		No. of Permit		House Number		DATE OF PERMITS	
	Ground	Grade			North West	South East	North West	South East	North West	South East	North West	South East
12						+100.0						
				+75.5 O.H.	+97.5							
						+55.6						
11					+30.6	+33.6						
						+85.6						
				+69.6 O.H.		+82.6						
						+42.6						
10				+406.6 O.H.		+82.6						
						+97.9						
						+56.9						
9				+37.4	+59.9	+48.4						
				+62.9 O.H.		+75.4						
8				+100.3								
7				+17.8 O.H.								
6				+19.7 O.H.		+27.8						
						+79.3						
						+41.3						
						+32.3						
5				+29.3								

#353 - Tap - C.A. Baker - 205 S. Wichita - 5-1-27  
 #394 - Tap - E.B. Brennan - 218 S. Wichita - 10-20-27  
 #5 - Tap - Johnson Dipstra - 236 W. William - 1-5-28  
 #9 - Tap - 238 W. William - 1-6-28  
 #904 - Tap - 221 W. Douglas - S. 55-28 - C.A. Baker  
 #654 - Old connection - 117 S. Water - 6-28-30 - R.C. Fish  
 #422 - Tap - 227 S. Wichita - George Magruder - 8-9-31  
 #1210 - 321 W. William - Day Yackley - 3-18-42 - Tap - Private Line  
 #1866 - 205 S. Wichita - Dipstra Pkg. Co. - 1-3-45  
 #2221 - Setting 6 in 8 eye - Leidy - 3-11-53 - 127 S. Wichita  
 #1325 - Private Line - Police Garage in Forum - Harley Riggs - 12-1-43  
 #1479 - Private Line - J.E. Langdon - 145 S. Wichita - 4-4-44  
 #638 - Tap - Private Line - 321 W. William - 5-19-46 - Baker Pkg.  
 #6554 - old connection - new Bldg. - 125 S. Water - Simmons - 9-26-53

#B7 312 Seal off 201-5-9-73 S. Wichita - Fredericks Pkg 10-11-65 (11-19-4)  
 #C1654 Seal off 401-403 W Douglas - Sevens 1-24-67 Home made in K.  
 (held at SW coin of Bldg) 3 Conn.