

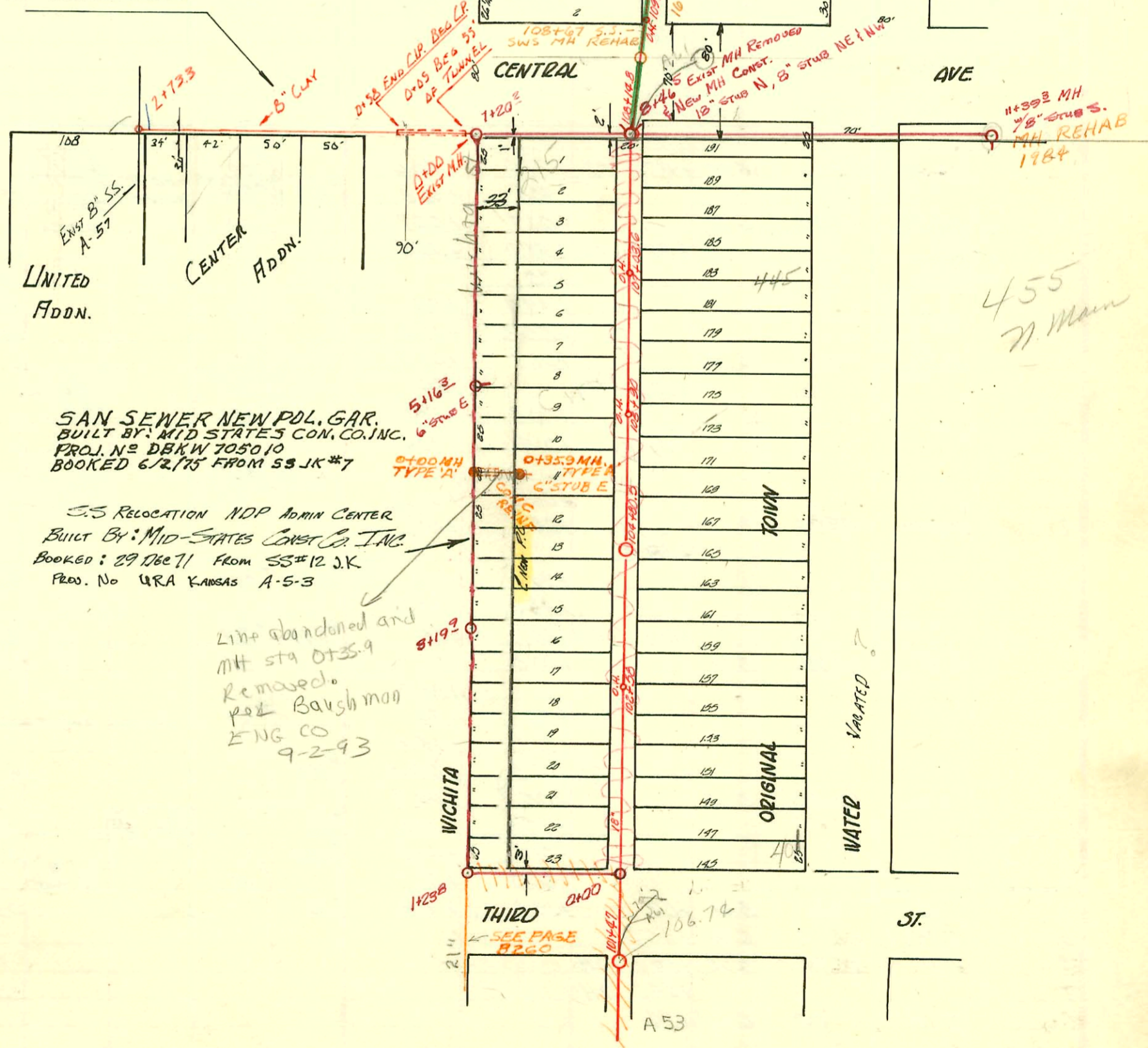
MAIN "A" FROM THIRD ST. TO ELM ST.
S.S. #1-1889
SCALE 1"=100'

TRAP AREA

Plat 9-49

Sewer Rehab. & Mosley Relief Sewer
Dist 1 & 20, North of Douglas
468-80-990-80271-000-000-001
Built By Stannard Const.
Booked 7-25-85 From As Built

RELOCATION OF A PART OF
LAT S, WEST SUB. A ON CENTRAL AVE. S.S. No. 1
BUILT BY: MID-STATES CONST. CO. INC.
BOOKED: 26 JAN 73 FROM S.S. JK #3
PROJ. No. BAHB502026



SAN SEWER NEW POL. GAR.
BUILT BY: MID STATES CON. CO. INC.
PROJ. NO DBKW 705010
BOOKED 6/2/75 FROM S.S. JK #7

S.S. RELOCATION NDP ADMIN CENTER
BUILT BY: MID-STATES CONST. CO. INC.
BOOKED: 29 Dec 71 FROM S.S. JK #12 JK
PROJ. No URA KANSAS A-5-3

Line abandoned and
MH sta 0135.9
Removed.
Per Baughman
ENG CO
9-2-93

455
77 Main

WATER VACATED

A 53

CONSTRUCTION RECORD

SERVICE RECORD

San Sewer Admin Center
Recorment MDP

STATION	ELEVATION		Depth	MANHOLE	4-INCH "Y" BRANCHES		No. of Permit		House Number		DATE OF PERMITS	
	Ground	Grade			North West	South East	North West	South East	North West	South East	North West	South East
0+00	110.8	106.85	4.0	0+00								
	112.0	107.07	4.9	1+23B								
2+00	112.2	107.12	5.0									
	112.4	107.19	5.2	3+19B								
4+00	112.1	107.24	4.9									
	112.3	107.30	5.0	5+16B	6" STUB E							
6+00	112.6	107.35	5.3									
	112.4	107.42	5.2	7+20B								
8+00	112.1	107.47	4.6									
	112.3	107.50 ^{sur} 108.58 ⁱⁿ	4.8 3.2	8+46	18" STUB N. 8" STUB NE & NW							
10+00	112.3	108.88	3.4									
	113.1	109.16	3.9	11+39B	8" STUB S.			038105	455 N Main		4-5-73	
SAN SEWER NEW POLICE GAR												
0+00	111.7	107.15 ^{out} 108.14 ⁱⁿ	4.6 3.6					038107	455 N. Main		4-5-73	
	112.3	108.51 ^{out} 108.70 ⁱⁿ	3.8 3.6	0+35.9	6" STUB E	do in Mt m H Top.		#0890 01397	455 N. S. Main (70' dia)		5-9-80 10-1-80	
					+08.6							
113	110.64	107.94	2.70		+03.8	+01.8	#475	#268	219 W. Elm 336 N Wichita	Sr. Paul H. Me. Church	7-10-17	6-27-16
					+78.8	+76.8	#257	#146	539 N Wichita	539 W. Water	6-1-37	8-14-05
					+54	+52	#357					
					+89	+87						
112	110.51	107.84	2.67		+04.2	+02.2						
					+97.7	O.H.						
					+77.1	+75.1	#1957		524 W. Wichita		12-28-23	
					+52.9	+50.9						
					+05	O.H.	#1093		530 N. Wichita		5-13-24	
111	110.13	107.74	2.39		+03.3	+01.3	#795	#676	522 N. Wichita	523 Water	4-6-38	12-11-18
					+78.2	+76.2						
					+51.5	+49.5	#1723	#388	524 W. Wichita	511 W. Water	11-21-23	12-9-15
					+27.2	+25.2	#1914	#787	520 N. Wichita	509 N. Water	12-27-23	10-27-17
110	110.18	107.64	2.54	+00	+05	+03	#918		520 N. WATER		12-26-17	
					+75	+77	#922		504 N. WICHITA		2-23-19	
					+49	+55	#667	#643	506 N. WICHITA	Cancelled	12-4-18	
									do record			8-30-17
109	111.24	107.54	3.70	+09.8	+26	+24	#156		219 W. Cent + Bal		3-23-14	
108	112.15	107.44	4.71	+14.8	+95.4	+93.4	#223			500 Water		10-23-06
					+95.5	+93.5	#2					8-3-01
					+74.7	+72.7						
					+50	+48	#224	#755	458 N. Wichita	Seal off 457 N. Water	3-22-26	7-27-28 5-18-23
					+31.4	+29	#65	#1142			11-8-95	
107	112.53	107.34	5.19	+03.6	+00.2	+23						9-1-22
					+75	+73	#25474	#741		445 N. Water		7-13-74 10-10-17
					+50.5	+48.5						
106	112.74	107.24	5.50		+25.6	+23.6	#683					9-14-17
					+90	O.H.	#1042	#739	444 N. Wichita		9-23-24	10-10-17
					+73.5	+71.5						
					+48.6	+46.6						
105	111.47	107.14	4.33		+23.8	+21.8	#341					4-17-22
					+80.5	+78.5	#751					10-16-17
					+73.7	+71.7	#82					2-20-17
					+48.7	+46.7	8811		476-29-30 N. Wichita		12-3-58	
					+84	+82						6-17-01
104	111.00	107.04	3.96		+00	+22						
					+71	O.H.						
					+50.2	+48.2	#25750	#14		Seal off 415 N. Water		7-28-71
103	110.82	106.94	3.88		+10.7	+8.7	#945					8-3-22
					+58	O.H.	#1327					9-7-23
					+50.3	+48.3	#36					3-29-23
102	110.36	106.84	3.52		+25.2	+23.2	#22861			401 N. Water		2-5-71
101	110.10	106.74	3.36	+47								

RELOCATED
ABANDONED

RELOCATED: LAT S, WEST SUB A

0+00	112.2	108.22	3.5	0+00 EXIST M.H.
0+05	BEG. 55' OF TUNNEL			
0+58	END B" C.I.P. BEG 8" C.P.			
1+00				
2+00				
2+73.3	112.4	108.93	3.5	2+73.3

Seal off
#22861
#22862 Seal off at Henning - 428 N. Wichita 2-5-71 (104+10.5)
#22863 - 215 N. Central 2-5-71 (107+62.8)
#22864
#22865
#22866
#22867
#22868
#22869
#22870
#22871
#22872
#22873
#22874
#22875
#22876
#22877
#22878
#22879
#22880
#22881
#22882
#22883
#22884
#22885
#22886
#22887
#22888
#22889
#22890
#22891
#22892
#22893
#22894
#22895
#22896
#22897
#22898
#22899
#22900
#22901
#22902
#22903
#22904
#22905
#22906
#22907
#22908
#22909
#22910
#22911
#22912
#22913
#22914
#22915
#22916
#22917
#22918
#22919
#22920
#22921
#22922
#22923
#22924
#22925
#22926
#22927
#22928
#22929
#22930
#22931
#22932
#22933
#22934
#22935
#22936
#22937
#22938
#22939
#22940
#22941
#22942
#22943
#22944
#22945
#22946
#22947
#22948
#22949
#22950
#22951
#22952
#22953
#22954
#22955
#22956
#22957
#22958
#22959
#22960
#22961
#22962
#22963
#22964
#22965
#22966
#22967
#22968
#22969
#22970
#22971
#22972
#22973
#22974
#22975
#22976
#22977
#22978
#22979
#22980
#22981
#22982
#22983
#22984
#22985
#22986
#22987
#22988
#22989
#22990
#22991
#22992
#22993
#22994
#22995
#22996
#22997
#22998
#22999
#23000